

Scrutiny – 10th July 2008

Homelessness in Walsall

Andrea Potts
Head of Supported Housing
01922 653460
pottsandrea@walsall.gov.uk



Walsall Council



The Local Picture

1. Priorities
2. Facts 'n' stats
3. Accessing a service
4. Service provision
5. A shared ethos of prevention
6. Challenges



Walsall Council

1 - Priorities

- Preventing homelessness arising where possible
- Providing support to vulnerable people and people at risk of homelessness
- Addressing the wider causes and effects of homelessness
- Increasing access to settled homes to help reduce the number of homeless households in TA



Walsall Council

2 - Facts 'n' Stats 07/08

Housing advice enquiries	3098
No. of cases where homelessness prevented	476
Homelessness decisions	360 ↓
Homeless acceptances	196 ↓
Repeat homelessness	1.02% (2) ⇔
Main reasons for homelessness:	
•Relationship breakdown	37% (72)
•Family / friend exclusions	23% (45)
•End of private tenancy	18% (36)
Average number of households in temporary accommodation	45 ↓
Average length of stay in B&B	2 wks ⇔



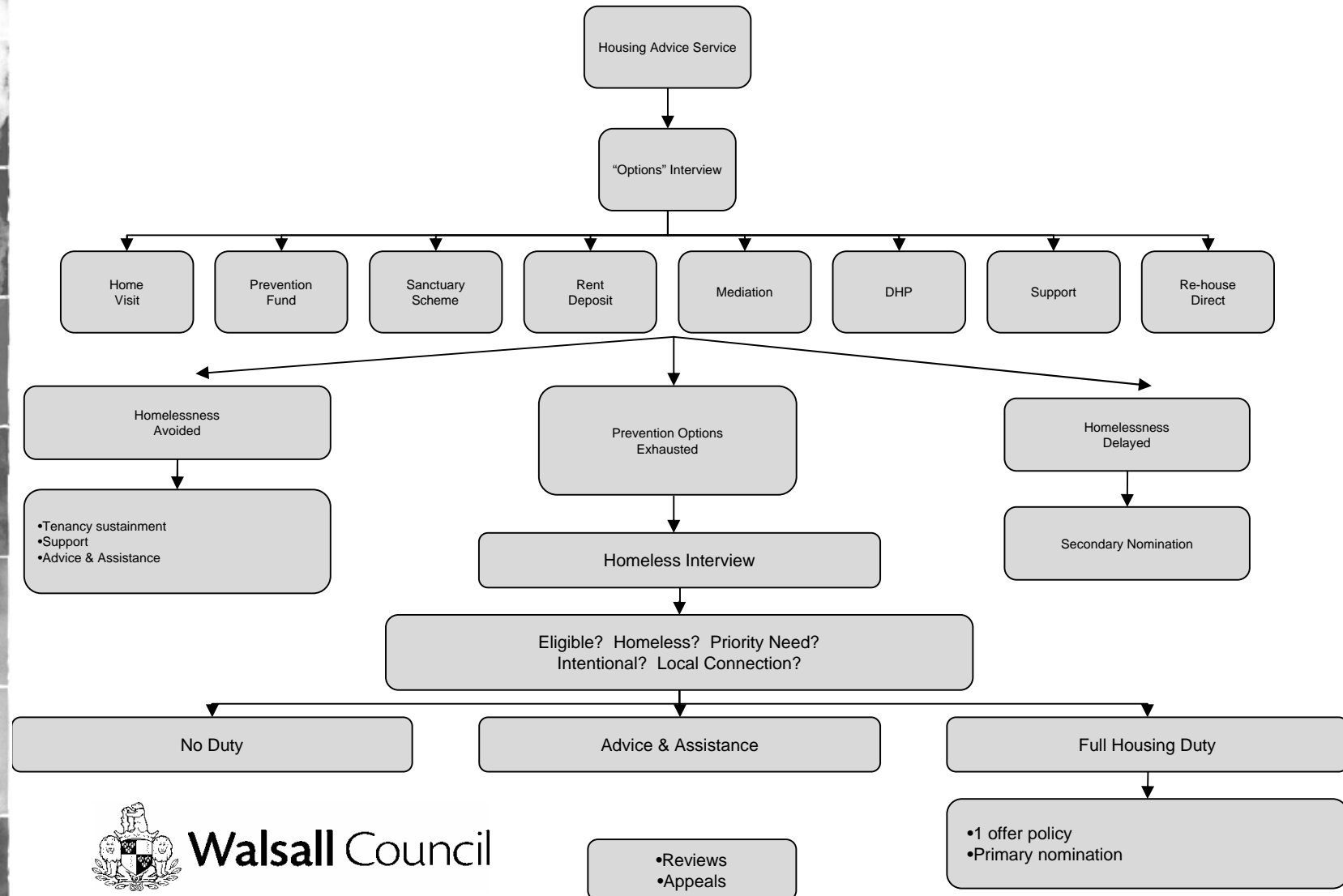
Walsall Council

3 - Threatened with Homelessness in Walsall?

Prevention

Prevention

Prevention



Walsall Council



4 - Current Service Provision (1)

Homeless Projects

- Sandwell House 16-25 years
- Rivers House 25+ years
- Green Lane / Dolphin House / Rivers family accommodation
- Jervis Court Foyer 16-25 years
- Hope Street 16-25 years
- Broadway North young people at risk
- Wednesbury Road young people at risk

Specialist Housing

- Womens Refuge
- Hayden Sanders young parents project
- Life Housing mother and baby 16+ years
- Beswick House 18+ years mental health / complex needs
- Walhouse Road 18+ years mental health / housing crisis
- Richards Street 18+ years mental health
- Brace Street 18+ years mental health



Walsall Council



4 - Current Service Provision (2)

Floating Support

- Refugees / Gypsies & Travellers
- Mental health
- Offenders
- Mental health resettlement support
- Homelessness resettlement
- Single homeless
- WHRA single homeless 16-25 years
- Teenage parents
- Women with substance misuse
- Young people leaving care
- People with alcohol issues

Homeless Advice and Practical Support

- LA's homeless & housing advice service
- Walsall Rent Guarantee Scheme
- CAB
- DART
- Glebe Centre



Walsall Council

5 - A Shared Ethos of Prevention

- | | | |
|---------------------------|---|-----------------------------------|
| • Youth Offending Service | - | Accommodation Officer
secondee |
| • Worklessness | - | Steps to Work |
| • Probation Service | - | PPO
“Clinics”
MAPPA |
| • Children’s Services | - | “Think Family” |
| | - | Safeguarding Children |
| | - | LAC |
| • Mental Health Services | - | Hospital discharge protocol |
| | - | Link worker |
| • Drugs & Alcohol | - | Hi’s ‘n’ Lows / Poppies |
| • DART | | |
| • RSL’s | - | HAP’s |
| • Private Landlords | - | Accreditation scheme |
| | - | Forum |
| • CAB | - | Court desk |



Walsall Council

6 - Challenges

- Youth homelessness – targeted youth support / education / mediation / supported lodgings
- Non-statutory homeless
- Disengaged service users (mental health, alcohol, drugs, ASB, exclusions)
- TA reduction plan / move on / reprovision of TA to meet “Places of Change” agenda
- Debt / affordability → new categories of service users
- Case resolution / NRPF / migrant workers
- Improving our evidence base



Walsall Council

Questions?



Walsall Council