

# A34 Sprint – Walsall Phase 1

# Overall Position Statement

There have been issues with contractor performance, but we are working hard utilising the NEC contract to protect public finances and to rectify any issues.

The works will be complete early June. We thank Walsall and the public for their patience.

As we look to rectify any defects we will try to minimise impact on general traffic and movement, although in reality there will still need to be some night closures required to complete works and surfacing.

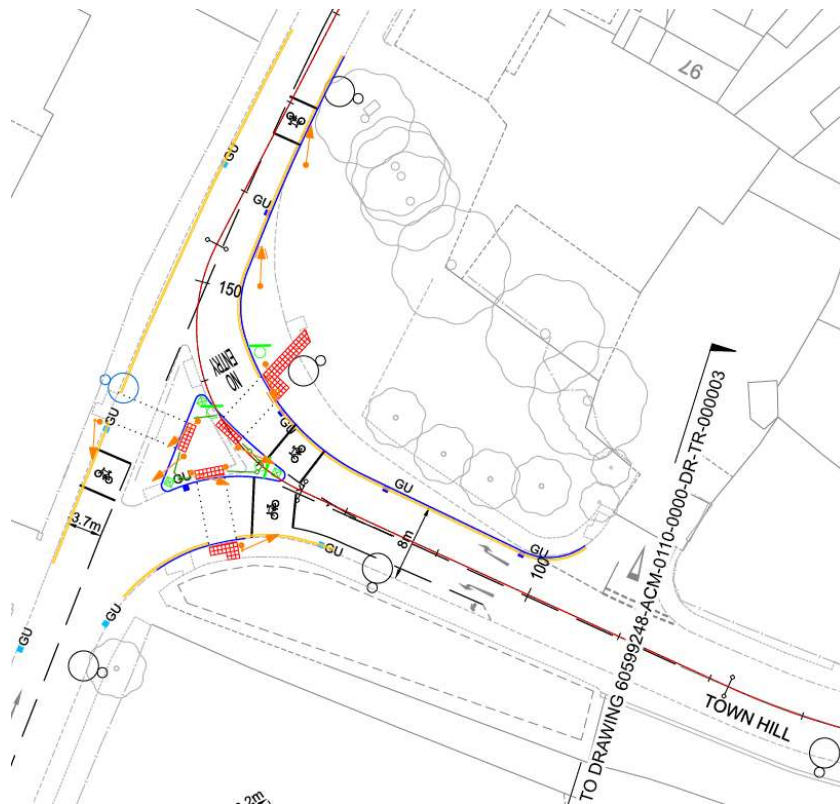
Through our public liaison officers we will continue to ensure any closures or access restrictions to businesses and properties are minimised or mitigated.

TfWM continue to work closely with Walsall Council on any permits required to close roads, and to ensure works are completed to the expected standard

# Key Sites

# Scheme Completion – early June

# Town Hill



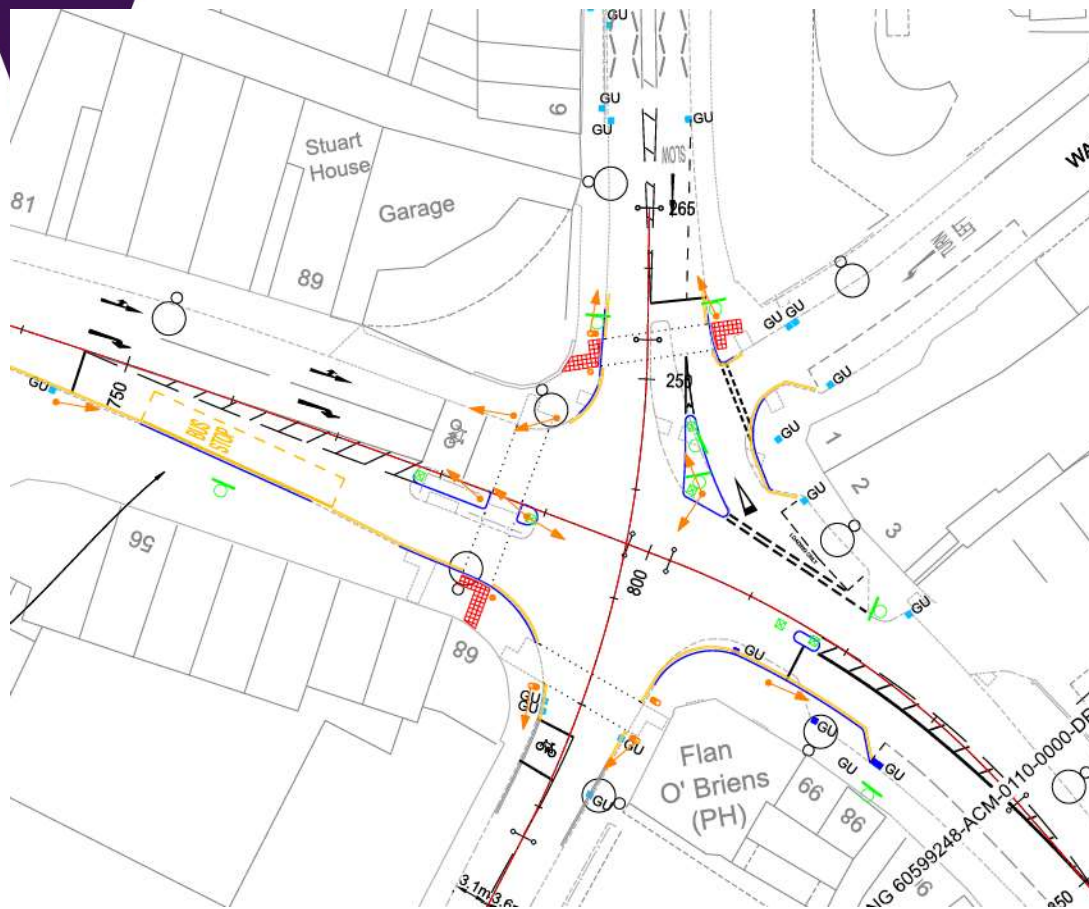
## Completed Work

1. Civils work completed
2. Carriageway works completed and defected
3. WPD Connection

## Outstanding Works

1. Splitter Island/footway surfacing
2. Defect Correction
3. Excavation backfilling and surfacing
4. Signal works
5. Street Lighting columns
6. Removal of TM

# Bridge / Ablewell St Junction



## Completed Work

1. Civil works completed
2. Carriageway resurfacing completed and defecting
3. Service diversions and connections
4. Culvert Connection

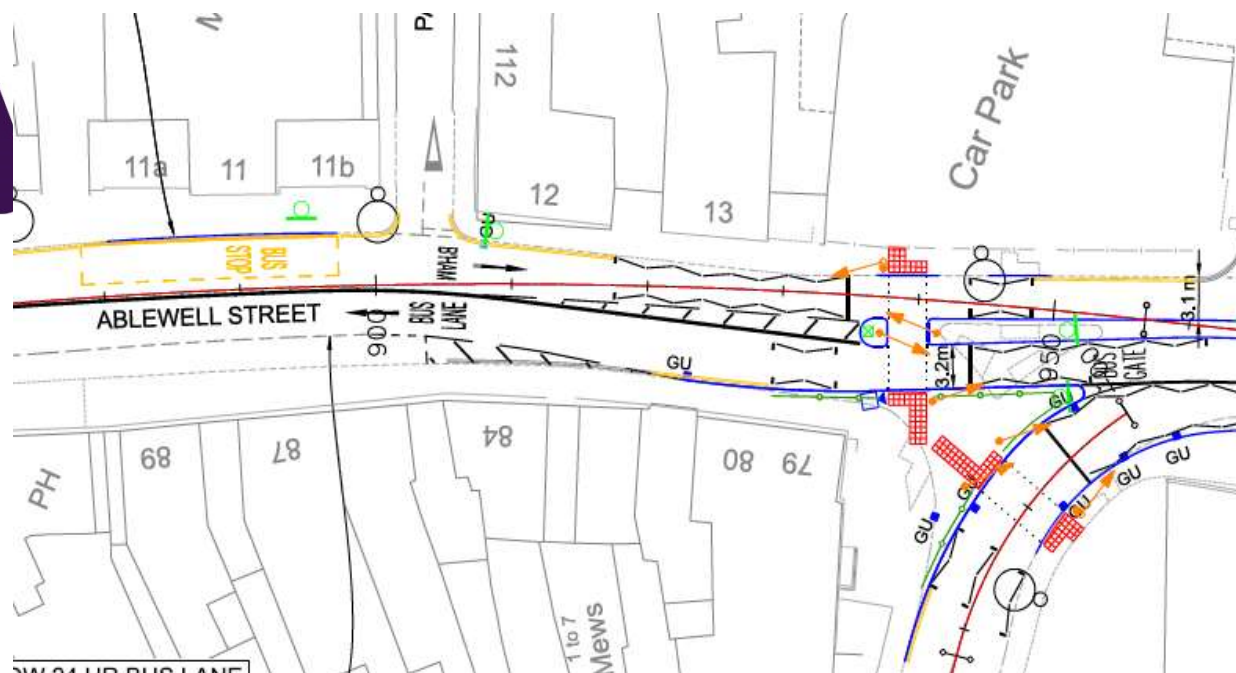
## Outstanding Work

Defect correction

Footway surfacing and backfilling

Signals turned on and pedestrian crossing opened

# Ablewell St Bus Stop/ Junction



## Completed Work

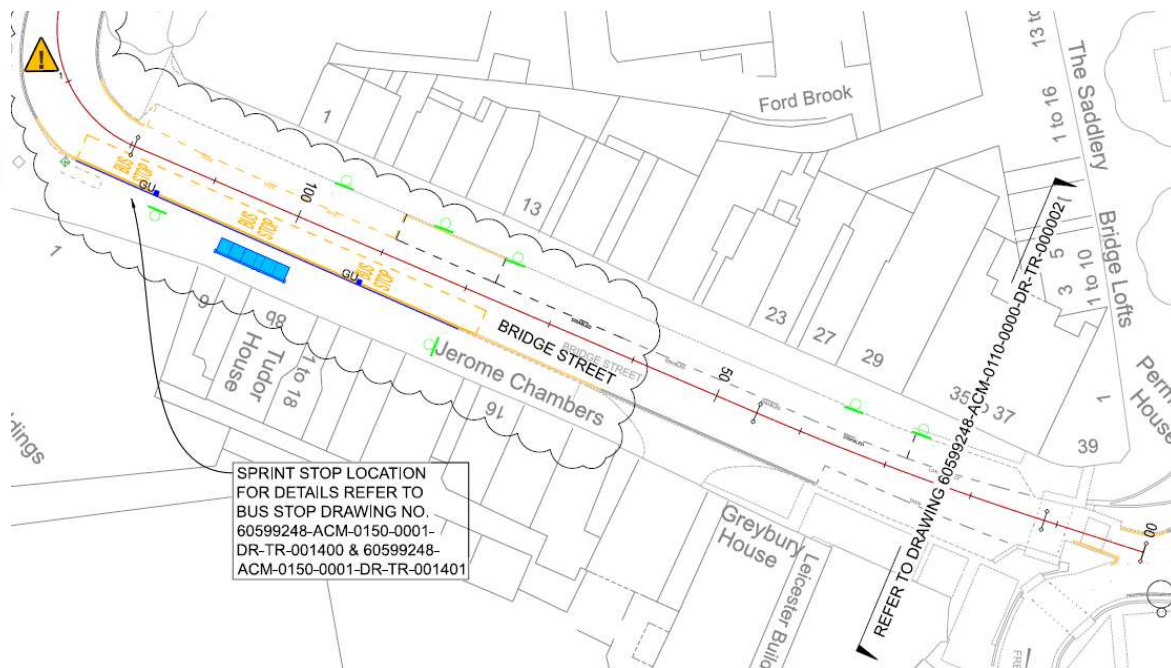
1. Civil works completed
2. Carriageway surfacing completed and defectted
3. Footway paving completed and defectted

## Outstanding Work

1. Defect correction
2. Footway surfacing and backfilling
3. Sign post reinstatement



# Bridge Street Central



SPRINT STOP LOCATION  
FOR DETAILS REFER TO  
BUS STOP DRAWING NO.  
60599248-ACM-0150-0001-  
DR-TR-001400 & 60599248-  
ACM-0150-0001-DR-TR-001401

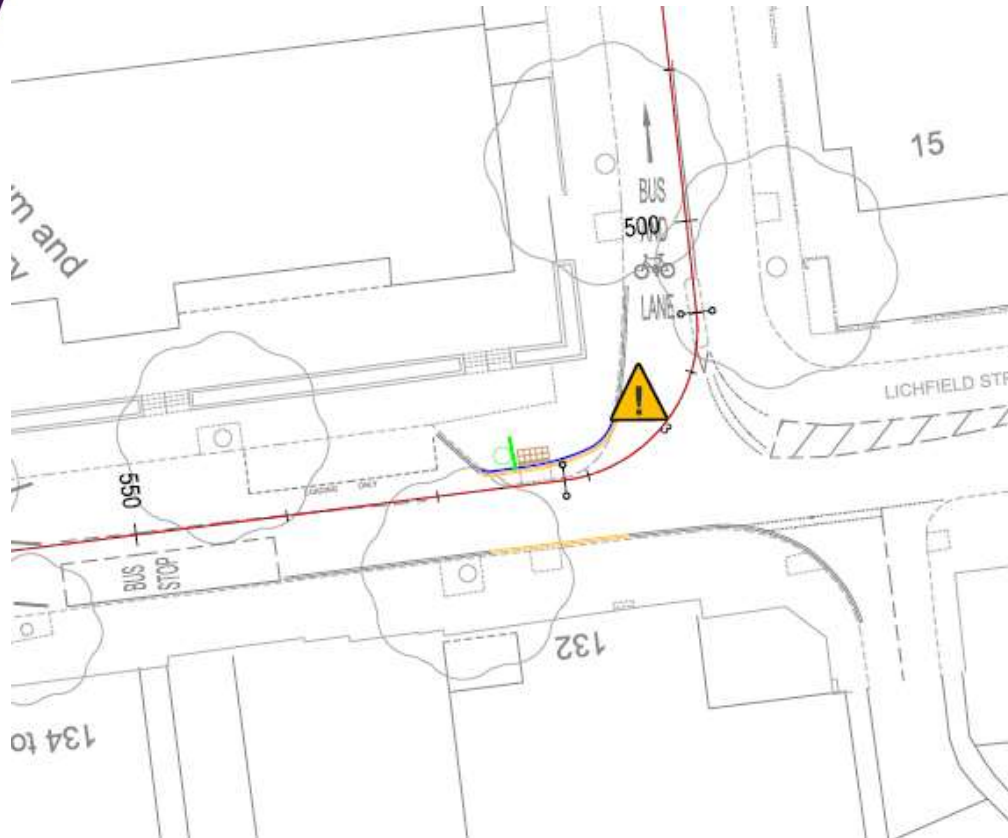
## Completed Work

1. Shelter installing
2. Drainage channels and connections
3. Paving works completed and defectured.
4. Carriageway works completed and defectured

## Outstanding Works

1. WPD connection to shelter
2. Defect correction

# Litchfield St Junction Hatherton Rd



## Completed Work

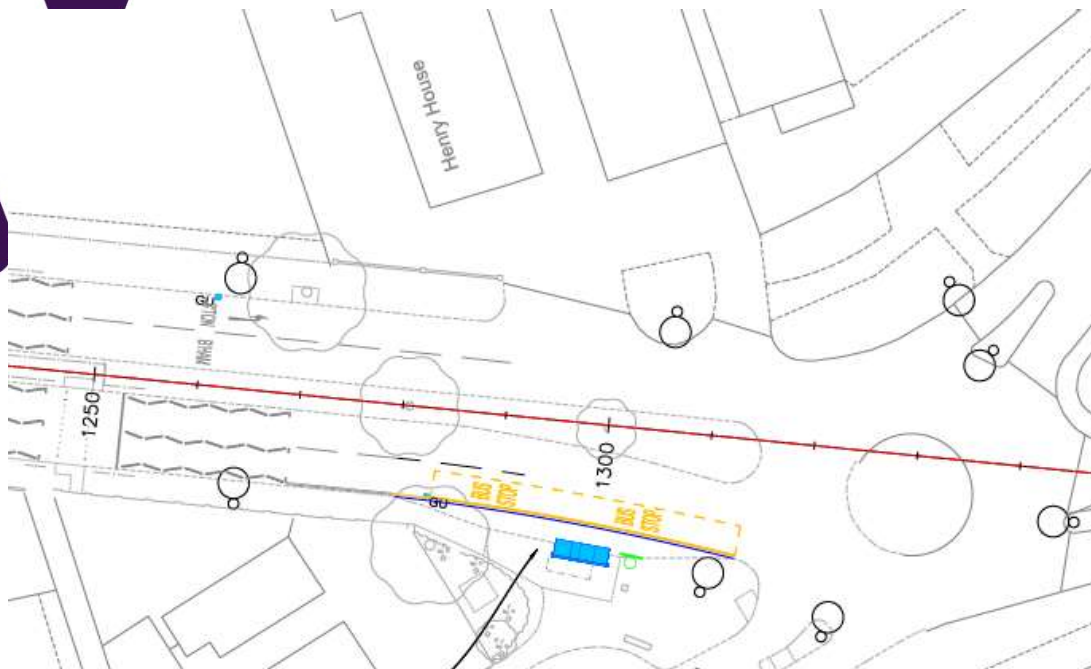
1. Civil works completed and defecting
2. Carriageway resurfacing and

## Outstanding Works

1. Defect correction
2. Electrical connection
3. Footway surfacing



# Six Ways



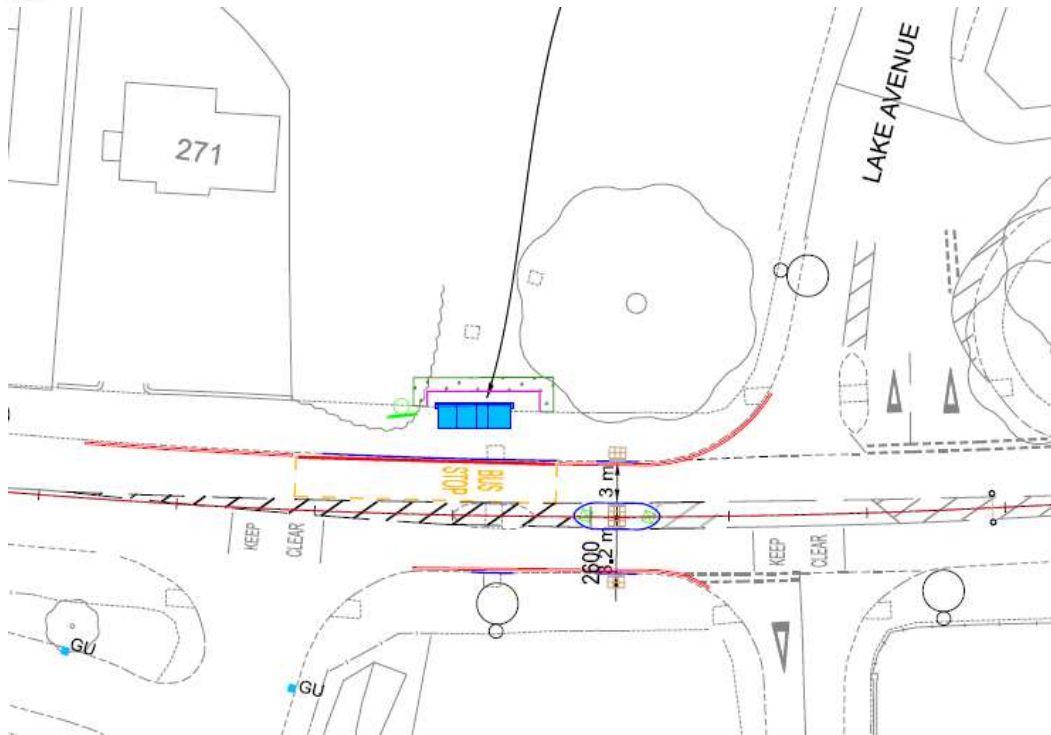
## Completed Work

1. Carriageway surfacing completed with defects corrected
2. Paving works completed with defects corrected
3. Shelter installed and operational

## Outstanding Works

1. Lining and High Friction Surfacing (works start Thursday night)

# Ravensdale Garden



## Completed Work

1. Shelter installed
2. Paving completed

## Outstanding Work

1. Defect correction
2. WPD connection

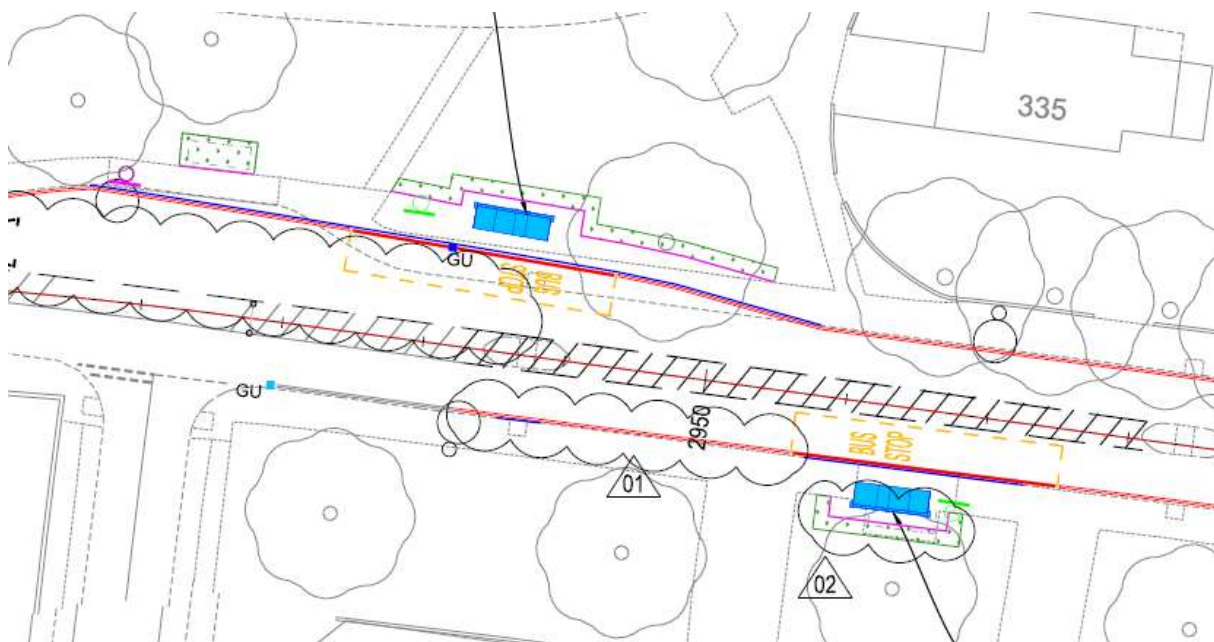
# Jesson Rd



## Completed Work

1. Shelters installed IB/OB
2. Utility diversions completed
3. Surfacing completed

# Queens Rd



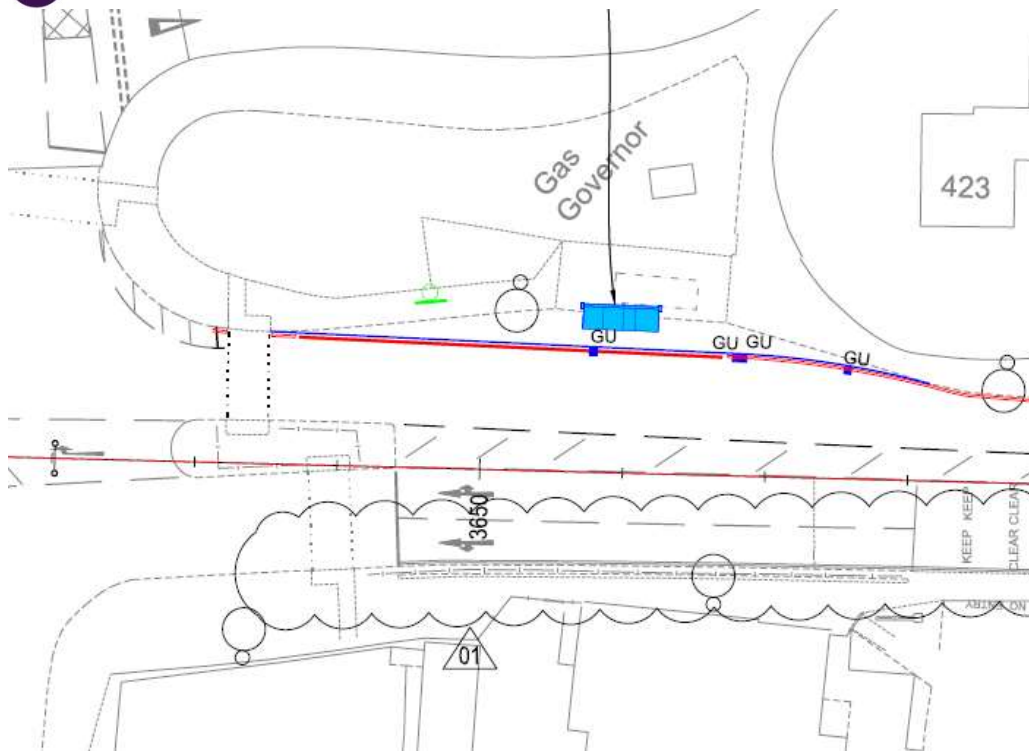
## Completed Work

1. Shelter installed both IB and OB
2. Paving completed and defectted IB and OB

## Outstanding Work

1. Defect correction
2. WPD connection
3. Footway surfacing

# Bell Inn



## Completed Work

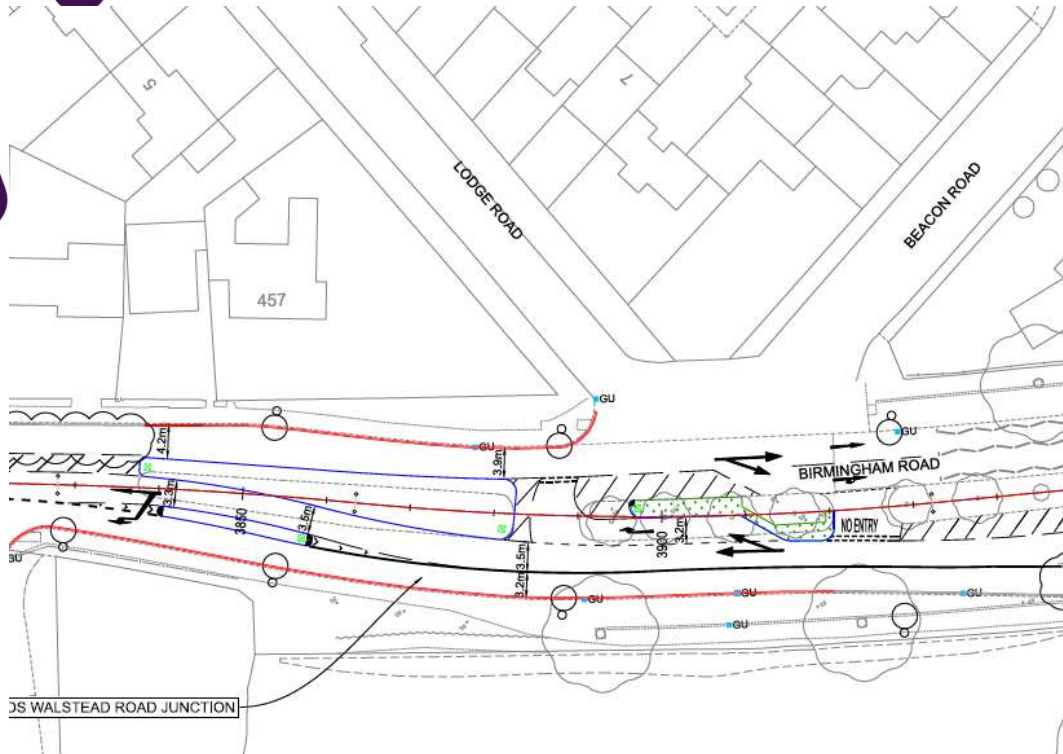
1. Shelter installed both IB and OB
2. Paving completed both IB and OB
3. Carriageway and footway surfacing completed

## Outstanding Work

1. BLE camera
2. Defects correction IB/OB
3. Lining works



# Lodge Rd



## Completed Work

1. Carriageway surfacing works completed

## Outstanding Work

1. Bolt down splitter island
2. Lining



# Question