

**Community Services  
Scrutiny and Performance Panel**

**Agenda  
Item No.**

**12 July 2011**

**XX**

**Evaluation of Area Partnerships**

**Ward(s)** All

**Portfolios:** Cllr Zahid Ali, Communities and Partnerships

**Executive Summary:**

As Walsall's Area Partnerships have now been operating for over 12 months, Walsall Partnership Board suggested that an evaluation be undertaken to identify where improvements can be made to the model and any issues which need to be addressed.

The evaluation was undertaken by Chris Allen, West Midlands Improvement and Efficiency Partnership, and the findings and recommendations are attached.

**Reason for Scrutiny:**

Area Partnerships are part of the Communities and Partnerships Portfolio and as such, it is appropriate that the initial findings and recommendations of the evaluation should be presented to this Scrutiny Panel for consideration and comment, before being presented to Cabinet in September 2011.

Members are requested to provide any comments / suggestions at the meeting or to Chris Allen when appropriate.

**Recommendations:**

**That:**

1. *Scrutiny Panel are requested to consider the findings and recommendations of the evaluation of Area Partnerships and to provide any comments / suggestions, to be considered by Cabinet at its meeting in September 2011*
2. *Scrutiny Panel receive a six monthly update on progress in relation to the six Area Community Plans*

**Background papers:**

Walsall Area Partnerships, attached at appendix 1

Area Community Plans (Operational), attached at appendix 2

### **Resource and Legal Considerations:**

There will need to be consideration given to the continued officer support for Area Partnerships to ensure that the actions identified in the Area Plans are delivered effectively and efficiently.

As Area Managers continue to work with Elected Members, communities and partners additional local issues are being identified, which have considerably increased the work undertaken within Area Partnerships.

### **Citizen Impact:**

Area Partnerships directly impact on Walsall's citizens as local priorities are delivered by the Council and its partners.

Area Partnerships are actively encouraging local people to become involved and assist in identifying and resolving local issues.

### **Environmental Impact:**

Some of the actions identified within the Area Community Plans are directly linked to improving the environment, for example, clean up of fly-tipping, graffiti removal, green space improvements.

### **Performance Management:**

The actions within the Area Plans will be reviewed on a monthly basis by the Area Managers, with a formal review planned for September 2011.

It is proposed that the Community Services Scrutiny Panel receive six monthly updates on progress against the Area Community Plans.

### **Equality Implications:**

A specific equality impact assessment has not been carried out as yet. However, this will be developed by the end of July 2011.

A presentation on Area Partnerships has been made to the Equalities and Diversity Group in June 2011, where information was provided to evidence the work being undertaken within Area Partnerships is linked to the equality and diversity priorities.

### **Consultation:**

The establishment of Area Partnerships was consulted on with Elected Members and partners.

The Area Plans are continually reviewed and updated with issues / priorities identified by Elected Members, communities and partners.

The evaluation report was consulted on with Elected Members and partners.

**Contact Officer:**

Jo Lowndes, Partnership Manager  
 . 01922 654714 / 0773 952 7034  
[lowndesj@walsall.gov.uk](mailto:lowndesj@walsall.gov.uk)

# **Walsall Area Partnerships**

## **Interim Review**

**June 2011**

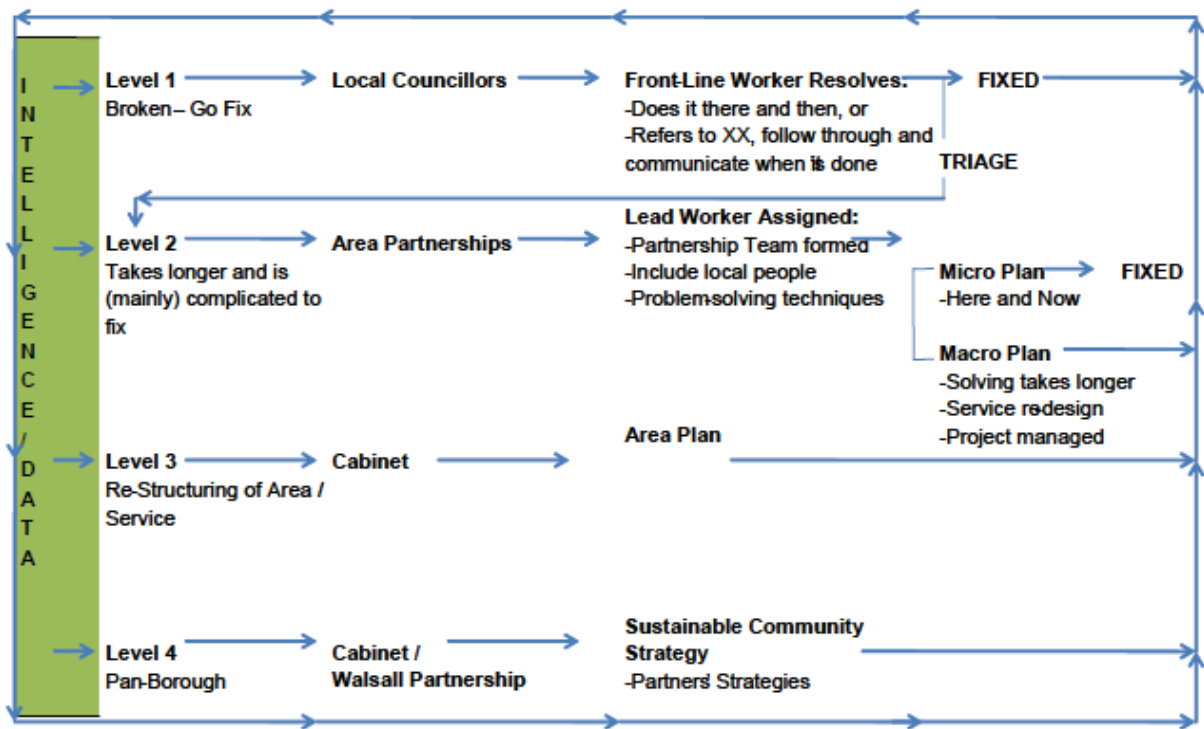


Chris Allen  
Place Adviser

Tel: 01299-409057  
Mob: 07956 30 30 37  
Email: [chris.allen@compass.uk.net](mailto:chris.allen@compass.uk.net)

## Introduction

- 1.1 This report has been resourced via the West Midlands Regional Improvement and Efficiency Programme (IEWM) via the assigned Place Adviser to Walsall Partnership (WP). Its purpose is to review the Area Partnership approach as it completes one year of operation, and to recommend changes that will raise performance.
- 1.2 IEWM supported this assignment given its core principle of a partnership approach to problem solving using a 'smarter' methods that will save resources. It was recognised that
  - the Area Managers and their support officers are the 'lynch pins' of the area partnership approach in Walsall.
  - the assignment would promote learning within the team internally and across the borough as a whole.
  - the approach supports co-working between elected members and officers.
  - support would protect the investment of partners by seeking to minimise staff turnover.
  - learning could be enabled through the development of benchmarking.
  - work was being conducted with partners in a challenging economic environment.
- 1.3 Area Partnerships form a key strand of the Walsall 'Working Smarter' programme, and the approach was developed learning lessons from the previous Local Neighbourhood Partnership approach. This review looks at developments from the previous approach, and highlights areas where progress has been achieved as well as highlighting where reversion to the previous approach needs avoiding.
- 1.4 The Working Smarter programme is seeking to embed a 'Whole Systems' approach, which looks at different levels of delivery. It is built on a four level model that was very successfully piloted in St Matthew's ward 12 months' ago. A case study from the pilot is appended below.
  - Level 1: Simple action now to save complex costly intervention later
  - Level 2: Low level partnership working needed using problem solving techniques
  - Level 3: Need for a high level multi –agency intervention to sort an increasingly complex issue
  - Level 4: There is need for a systems change at a borough level (Cabinet intervention and impact on partner strategic plans)
- 1.5 Area Partnerships primarily enable 'Level 2' problem solving through facilitating multi-agency working, with Area Managers fulfilling the role of catalysts for positive change in their respective areas.
- 1.6 This approach is based on
  - putting residents at the heart of action planning
  - enabling local people to influence decisions
  - working smarter and in partnership to reduce the impact of steep budget cuts
  - ensuring that the service to residents is right first time, every time.



1.7 The 6 area partnerships endeavour to

- introduce a radical change in how engagement occurs
- empower local structures and people
- communicate with ALL residents
- create clear responsibility and accountability
- ensure a partnership approach
- align service delivery to local needs.

1.8 The methodology for the development of this report has been

- Agree time allowance with lead officers in WP and IEWM.
- Ongoing liaison with lead officers.
- Consult with Area Managers and Support Officers, and provide recommendations to the Partnership Director
- Provide support training to Area Managers and Support Officers
- Assimilating relevant information from the wider support work and knowledge of the Area Partnerships.
- Liaison with the Leadership Centre support to members.
- 1-1 interviews with identified elected members.
- Observation and discussions from Chairs and vice chairs meeting.
- Observations from Area Partnership meetings.
- Meetings with senior officers with Walsall Council.
- Meetings with stakeholder partners.
- Elected member consultation (open to all and ongoing).

Work in Progress:

- Analysis of area plans.
- Further consultations as required by elected members and stakeholders.

## Findings

### 2.1 **Effective development:**

Area Partnerships are developing effectively with recognised excellent support from Area Managers and their Support Officers. Members report that the new structure is both enabling and accelerating actions to tackle local issues. The Area Managers are seen as skilled and dedicated officers, who are able to unravel complex issues and enable appropriate action.

There are some misunderstandings about the level of support available (ie a misconception that there is a 'team' of people behind the Area Manager). There are also some tensions about 'who gets the credit' in some instances. The attitude needs to be that of benefit for all rather than aligning credit to a particular group, especially in the public 'service' arena.

Partner stakeholders also recognise clear improvement from the previous LNP model. Local multi-agency tasking lies at the heart of success. It has been clearly stated a flexible approach is encouraged within the context of the four level model. There is also increasing understanding and application of the four level model by Area Partnership chairs and vice chairs (ie it is becoming embedded in their terms of reference).

### 2.2 **Value for Money:**

The approach taken from the pilot onwards has been to demonstrate the cost effectiveness of solving problems at the earliest possible stage before they escalate. The strategy of linking together 'common sense and calculators' as a mechanism for problem solving and demonstrating saving is especially critical in the context of immense pressure on public finance.

It is also recognised that the funding for quick wins and early intervention available to Area Managers is vital both in terms of nipping problems 'in the bud' and also demonstrating to members of the public that action can be taken, thus raising public confidence in the whole approach.

### 2.3 **Area Team:**

The area team currently consists of 6 area managers and 3 support officers, along with managerial support for both groups. There is a 'can do' attitude within the team, which is recognised and respected by the great majority of partners (ward councilors, other public and community leaders and workers, etc). It is recognised that the Managers are central to the success of the programme, and that recruiting more experienced managers has been a worthwhile investment. The managers have great satisfaction from their jobs, even though some barriers to progress can be frustrating.

The 'can do' attitude unfortunately means that managers do not find it easy to say "no" to tasks that they believe outside their core duties. This is especially true when requests come from elected members.

### 2.4 **Elected members:**

There is broad cross party support for Area Partnerships. This will be essential for the long term culture change needed to enable 'Smarter Working'.

Elected members are vital to the success of Area Partnerships – providing the

both the 'clout' and democratic legitimacy. However, not all elected members have taken ownership of Area Partnerships and given their full commitment, support and leadership. Elected members themselves also identified the need for future support and training. It also needs to be recognised that some Members feel they are attending a plethora of meetings and guidance as to what would make the most of their time would be helpful.

There is some variation in thinking with regard to whether elected members should attend stakeholder meetings. Some feel strongly they should, and some feel it is not their role. Of those wishing to attend, some feel it is to share information, and some feel it is to gather it. There is also some unease amongst some stakeholders about the attendance of elected members at these meetings with regard to the confidentiality of information being shared, especially when related to operational matters.

There is the need for further understanding regarding the role of members. This review is seeking to highlight areas where there might be some consistency, whilst still leaving scope for local variation as one size never fits all.

## **2.5 Partner engagement:**

There are some excellent emerging partnership approaches, demonstrating a new culture of working with partners such as Health, the Police, Fire and Rescue, ASB team, social housing providers etc. There are some internal partners where there is a struggle to engage with Area Partnerships when the central strategy is pan borough, or even Black Country wide (eg Economic development).

It has been observed that under the previous LNP programme, there was nowhere to take issues that needed a multi-agency approach (such as ASB), but now area partnerships enable such a process. There is feeling that some partners are not 'stepping up to the plate' in some incidents, and seeking to park problems with Area Partnerships rather than looking to lead and use the Area Partnership as a means of taking an effective partnership approach.

The evidence that highlights the strength of partner engagement is a willingness to share data and intelligence in order to enable joint working. The confidence of partners in the process is enabling this increasingly. There is also evidence that Area Partnerships are influencing change in mainstream partners' way of working.

## **2.6 Area meetings:**

A number of emerging types of meetings are emerging (Partnership, tasking, task groups). Clarity needs to be established with regard to the purpose of each meeting, which will identify who is critical to the process, and reduce time demands on those who do not need to be there. All meetings are seeking to develop a holistic approach to tackling local issues. It is entirely appropriate that some meetings are closed when dealing with sensitive and confidential information.

## **2.7 Community Engagement:**

In reproducing the recommended way of working, there is a misconception that community engagement is confined to the community meetings. In reality, they are just the 'tip of the iceberg' of engagement. There is



increasing good practice beyond this in all areas. The evidence suggests that the larger part of community engagement and consultation in Area Partnerships occurs outside of community meetings with some excellent and innovative practice, which places Walsall as a leader in the Localism agenda. Enabling processes through which the community can recognise what needs to be done, and be supported to do it for themselves lies at the heart of both Big Society and empowerment of local communities.

All partners also have their own engagement processes that can help extend the level and quality of engagement (eg the Police 'conversations with a purpose' and Walsall Housing Group's residents survey).

Although it was identified that old LNP style meetings were ineffective and unrepresentative of local communities, some elected members valued the opportunity to face the public and hear their issues directly. Accordingly, community meetings were included with the Area Partnership model. The intention was that these meetings were developed and led by ward councilors with the support of democratic services. However, in practice, the onus has fallen to Area Managers to organise, lead and encourage people to attend community meetings. Not only has this increased the burden on Area Managers who are working to full capacity, some of the meetings have not been owned by councilors, and some have also been critical of them.

## **2.8 Capacity:**

The success of the programme also provides one of its threats – that is, the capacity of the Managers and the Support Officers. Some areas are experiencing greater demand and work load volume and intensity, placing excessive pressure on their Area Managers.

The inappropriate time demand on Area Managers includes having to deal with 'Level One' issues if requested by their local councilors; organising and supporting Area Community meetings; leading on issues when partners are reluctant to take a lead role; and facing internal 'Level 3' and 'Level 4' type barriers.

## **2.9 The 'Working Smarter' context:**

Area Partnerships have been a key an underpinning support for "Working Smarter" programme. They contribute significantly to Walsall Council's new operating system, with potential to identify how the council can improve performance in the eyes of the customer. It is a very successful and well managed initiative, backed by clear thinking at a cabinet and management level.

Although the four-level model is being incorporated into working procedures across the council, there is greater evidence, at this stage, that external partners to the council are engaged with the model (especially within Area Partnership work streams) than internally within the council. However, it is recognised by senior management that the Area Partnership approach has been a 'pioneering' first step within the Working Smarter programme.

## **Recommendations**

### **3.1 Recommendation 1: Cross Party Support**

It needs to be recognised that 'success is a journey and not a destination', thus placing the Area Partnership model within a long term culture change context. Commitment to this culture change process from the principal party leaders will give confidence to both partners and the public for the long term. Scope still remains for change in the light of learning, but leaves intact the fundamental principles and structures.

### **3.2 Recommendation 2: Finance**

Processes remain in place to quantify cost savings as demonstrated within the pilot stage of the programme. This will continue to enable confidence that the programme continues to save costs for the public purse, as well as highlighting barriers that limit further cost savings. This might also identify a rationale for increasing the capacity of the Area Partnership team.

### **3.3 Recommendation 3: Area Manager budget**

The funding assigned for the Area Manager to spend is left solely in their discretion. This enables a swift response to issues and also separates the funding from political influence. Managers remain accountable for any spend through monitoring procedures, but the culture should be that of 'seeking forgiveness' rather than 'seeking permission'.

### **3.4 Recommendation 4: Area Partnership meetings**

The Area Manager needs to be entirely responsible regarding who should attend partnership meetings, tasking meetings and task group meetings in order to maximize the efficiency of them. This may involve informing elected members that their presence may inhibit progress, or it may involve informing members that their presence would be critical to enable progress. Any information shared needs to be classified as confidential and, if necessary, outline confidentiality agreements should be agreed and signed. The meetings are not appropriate for the purpose of briefing members.

### **3.5 Recommendation 5: Area task groups**

Area Managers need to recognise the limitations of their own capacity and seek to identify partners who will take a lead role regarding identified priorities in their respective areas. This lead role might be taken by a partner agency or department (eg Police, ASB team, Health, etc), or possibly one of the local ward councilor. Without that supportive leadership from partners, local tasks will not be able to be advanced effectively.

### **3.6 Recommendation 6: Level One issues**

In order for the model to continue to work effectively, elected members should go directly to front line workers to resolve such issues in the first instance. This will protect the capacity of the Area Manager to focus on issues than demand a partnership approach. If a Level One issue proves to be more complicated than first identified, then referral to the Area manager would be appropriate.

**3.7 Recommendation 7: Elected Members**

A workshop is facilitated<sup>1</sup> in order to brief new members, and refresh previous members, about the core issues of the area partnership approach. This will help clarify what is expected of members, and their vital role in enabling this process through their leadership and giving it democratic legitimacy.

**3.8 Recommendation 8: Community Engagement**

It needs to be recognised that community meetings are the tip of the iceberg in terms of community engagement. This recognition will enable the development and integration of the rich variety of engagement mechanisms that can drive customer intelligence as part of Working Smarter in Walsall, and enable ownership as an aspect of empowerment with the development of Big Society principles. Increasing access to the Council's internal customer intelligence and external partner's information will encourage and 'resident insight' approach.

**3.9 Recommendation 9: Area Community Meetings**

The purpose of community meetings should be made clear and communicated. They should be owned and led by ward councilors and organised with the support of democratic services, and **not** the Area Managers or their Support Officers. Councilors have the flexibility to organise their own meetings as they feel most appropriate (eg Ward Meetings, Community Forums, or no meetings at all). Area Managers should have the flexibility to attend the meetings as their capacity allows. Learning gleaned from such meetings can be shared at the Area Partnership chairs and vice-chairs meeting.

**3.10 Recommendation 10: The 'Working Smarter' context**

A workshop is facilitated<sup>2</sup> that enables consideration of emerging good practice that will help shape the wider 'Working Smarter' programme. An "Appreciate Inquiry" mechanism is recommended which would enable a 360 degree understanding of progress during the first year of the programme. This would also enable issues at levels three and four to be identified and tackled.

**3.11 Recommendation 11: Local financial need**

There is a danger, as is highlighted in evaluations of previous local initiatives, that the pertinent financial issues for local people are put secondary to the cleaner, safer, greener agenda. The current economic climate demands a priority on financially related issues such as debt, doorstep lenders, poverty, worklessness (especially amongst young people), etc. It is recommended that the local barriers to employment are considered as part of the pan Borough and wider Black Country economic development approach.

---

<sup>1</sup> Time exists within the current review process to enable this

<sup>2</sup> Time also exists within the current review process to enable this

## **Appendix - St Matthew's Pilot**

St Matthew's ward is in the Walsall South Area Partnership (St. Matthew's / Paddock / Palfrey / Pleck)

### **Client Group/Topic:**

- Adult Social Care
- Children's centres and think family
- Other projects (not highlighted here):
  - Worklessness
  - 16/17 year old homelessness
  - Street scene
  - Town centre
  - ASB (Williams Street)

### **Objectives:**

- General:
  - Working smarter using the 'four level model' (see appendix below)
  - Cost savings
  - Increased customer satisfaction
- Adult social care purpose:
  - To re-design adult social care around a more flexible, immediate and appropriate to customer needs.
- Children's centres and think family purpose:
  - To test the validity of intervening at an earlier stage to prevent families needing complex and costly support services in the longer term.

### **Outcomes: - in particular is work delivering efficiencies/ and could it be replicable elsewhere:**

- A borough wide roll out of the adult social care project estimates savings of just under £1.5m. The figures are verified by the Finance.
- Increased staff job satisfaction and motivation.
- Learning outcomes are stated as
  - Clear leadership is required to bring about cultural change.
  - Leaders must model the behaviour needed to implement the system and to prevent staff from reverting to the old system.
  - Members have a vital role to play in developing communities to be part of the solution.
  - Design new systems and services to meet demand, rather than re-design existing systems.
  - The resistance of the existing system is significant.
  - Prototype at small scale and then roll out when a solution works.
- Replicating elsewhere: The St Matthew's pilot highlighted that money can be saved in five key ways:
  - 1) Working with true demand, avoiding queues, unnecessary management and costs of bureaucracy.
  - 2) Improved working methods and practice to do only work valued by the customer.
  - 3) Combining what were previously separate services so that the whole job is done in one go with fewer costs, management and administration.
  - 4) Preventing demand by acting before something goes wrong. It is cheaper to prevent, rather than deal with a problem when it has got bad enough to trigger when a service would ordinarily be provided – a 'stitch in time'.

- 5) Empowering front-line workers to do more and report more to others, requiring less management and less bureaucracy.

### **Case Study:**

Assessments are made to determine the care and support children might need. In the St Matthew's pilot, the assessments of two families have been compared. The families had certain similarities, but with Family 2 presenting now with the issues that Family 1 presented seven years ago.

**Family 1** was identified through a list of top five re-referrals to Children's Services, they were repeat users of the police and also known to Caldmore Housing as heavily supported occupants within the St Matthew's ward. The family includes mum, dad and three children. The family received a number of service interventions starting in 2003 and culminating in Child Protection, due to domestic violence. Family 1 came into assessment seven years ago and received multiple-agency involvement, often in isolation and without cross-reference to each other – lots of relationships, but no meaningful relationships.

**Family 2** consists of a core family unit: mum, dad and two children, who were recently referred by the Health Visitor to Palfrey Sure Start Children's Centre with issues identified following the birth of a new baby, older sibling behavioural issues with new baby and mother not coping, feeling isolated and house-bound. The family lives in the St Matthew's ward which is within the catchment for Palfrey Sure Start Family Support. This family was presented for assessment during the St Matthew's pilot and received an intensive more efficient service, coordinated by a named lead professional. This took a whole-family approach, whilst ensuring that the child remained at the centre of the assessment.

In our prototype, the needs of Family 2 have been considered more holistically. For example, they have been loaned a double-buggy so that the mother can take the two children out of the house, reduce isolation and access other services.

A number of improvements to existing services have been identified as a result of this work-stream, largely strengthening the role of lead professionals and processes within the new system. It is not possible to say with certainty whether the second family will follow the same high-cost path as the first and so cost savings cannot be supported by Walsall Finance. However, by spending a relatively small amount now with Family 2 there is the potential of saving significant costs in the future.

Further evidence now needs to be gathered by working with the new prototype system with additional families at level 1. This would provide the necessary further evidence of potential cost savings. As it stands, Family 1 have cost £26,197 (October 2009-present) and by comparison Family 2 have so far cost £347 (June 2010 – present). Should the early intervention with Family 2 be successful this is a saving of over £25,000 and obviously a better outcome for the family.

Statistically Family 1 has a one in 10 chance of going into care. The costs of this would be around £259,000. Although we do not yet have the evidence, it is clear that if such costly care packages can be avoided it is better for families and saves a significant amount of money. This supports a case of acting early to prevent problems, rather than waiting until they reach a threshold of being bad enough.

## AREA COMMUNITY PLAN ACTIONS – BROWNHILLS, PELSALL, RUSHALL AND SHELFIELD

Workstream priority: **Tackling anti-social behaviour and crime**

Wards affected:     Brownhills  
                           Rushall – Sheffield  
                           Pelsall

Aims/objectives:     Reduce the incidents of crime and anti-social behaviour

Local Issues	Actions (bold actions completed or ongoing)	Lead and Accountable Partners Involved
1. Anti-social behaviour in Leighs Road, Sheffield	<ul style="list-style-type: none"> <li>a) <b>Eliminate joy riding at rear access road through installation of a swing barrier</b></li> <li>b) Stop damage to fencing and property</li> <li>c) Tackle arson</li> </ul>	<b>Councillor Carpenter</b> , Highways, local councillors, Legal Services, Estates, West Midlands Police, Anti-Social Behaviour Unit
2. Anti-social behaviour in Broad Way, Sheffield	<ul style="list-style-type: none"> <li>a) Eliminate intimidation of residents by covert surveillance undertaken to identify culprits</li> <li>b) <b>Bus stop next to the Alleyway has been removed</b></li> </ul>	<b>Rachel Roberts (Safer Walsall Partnership)</b> , West Midlands Police, Centro, Reassurance Team, local councillors
3. Anti-social behaviour in High Heath Park, Sheffield	<ul style="list-style-type: none"> <li>a) Stop damage to play area equipment</li> <li>b) Tackle arson</li> <li>c) Stop damage to shelter</li> <li>d) Detached youth team to target area</li> <li>e) Hopper Bus to be deployed in the area</li> <li>f) Integrated Young Peoples Support Services</li> </ul>	<b>Tony Brown (Integrated Young People's Support Services)</b> , West Midlands Police, Street Pride, Safer Walsall Partnership, Walsall Housing Group, Reassurance Team, Friends of High Heath Park

	working closely with the Friends of High Heath Park and Greenspaces to tackle the issues in the park	
4. Anti-social behaviour outside Pelsall Youth Centre, Pelsall	<ul style="list-style-type: none"> <li>a) Eliminate damage to surrounding buildings</li> <li><b>b) Remove drugs paraphernalia found on grounds</b></li> <li><b>c) Anti-Social Behaviour Unit have delivered sessions with young people on the impact of anti-social behaviour</b></li> <li><b>d) Regular litter picks of the area undertaken with the History Club</b></li> <li><b>e) Church Hall and Youth Club to erect metal fence to reduce damage to the building and improve security</b></li> <li>f) Utilise specialist services as appropriate for targeted delivery</li> </ul>	<b>Tony Brown (Integrated Young People's Support Services)</b> , Anti-Social Behaviour Unit, West Midlands Police, Safer Walsall Partnership, St Francis Church, History Club, Friends Of Pelsall Common, Street Pride, Hi's 'n' Lows, Crime Reduction Initiatives, T3
5. Anti-social behaviour adjacent to St James Church, Brownhills	<ul style="list-style-type: none"> <li>a) Stop damage to the church premises</li> <li>b) Clear litter and rubbish</li> <li><b>c) Street Pride have installed new bins in and around the church property</b></li> </ul>	<b>Councillor Paul</b> , West Midlands Police, Street Pride, St James Church, Anti-Social Behaviour Unit
6. Anti-social behaviour on Clayhanger Estate, Brownhills	<ul style="list-style-type: none"> <li>a) Positive youth activities to be provided</li> <li><b>b) Integrated Young People's Support Services detached to team are working in the area with the Police</b></li> <li><b>c) Use of the Hopper Bus on a weekly basis</b></li> <li>d) Utilise specialist services as appropriate for targeted delivery</li> </ul>	<b>Sergeant Wilkinson (West Midlands Police)</b> , Anti-Social Behaviour Unit, Integrated Young People's Support Services, Crime Reduction Initiatives, T3
7. Anti-social behaviour at Short	a) Stop damage to bus shelter	<b>Sergeant Amos (West Midlands Police)</b> ,

Lands Lane, Pelsall	<ul style="list-style-type: none"> <li>b) Eliminate intimidation of residents</li> <li><b>c) Information letters sent to local residents</b></li> <li>d) Act on noise nuisance</li> <li><b>e) Police presence has been increased in the area to monitor the situation</b></li> </ul>	Walsall Housing Group, Safer Walsall Partnership, Street Pride, Centro
8. Eliminate short-term hotspots of anti-social behaviour	a) Deployment of Apache CCTV where appropriate	<b>Inspector Lisa Robson (West Midlands Police)</b> , local councillors, Anti-Social Behaviour Unit
9. Crime suffered by local businesses	a) Implement a Smartwater business watch programme	<b>Antonia Pompa (District Centre Management)</b> , West Midlands Police
10. Anti-social behaviour at Ryders Hayes Park, Shelfield	<ul style="list-style-type: none"> <li>a) Stop damage to the play equipment</li> <li>b) Arrange on-site visit with partners and local residents to agree action plan</li> <li><b>c) Increased Police presence in the area</b></li> <li><b>d) Extra patrols by park rangers</b></li> </ul>	<b>Councillor Perry</b> , local councillors, Anti-Social Behaviour unit, West Midlands Police, Green Spaces
11. Removal of travellers from Holland Park	<ul style="list-style-type: none"> <li><b>a) Remove intimidation of travellers towards local residents</b></li> <li><b>b) Improve appearance of area</b></li> <li><b>c) Prevent travellers returning to site through improved security</b></li> </ul>	<b>Andrew Cooper (Green Spaces)</b> , <b>West Midlands Police</b>
12. Prevent flytipping and access for illegal travellers on Walsall Road Pelsall	<ul style="list-style-type: none"> <li><b>a) Work with site owners to resolve issue</b></li> <li><b>b) Secure site to prevent illegal access</b></li> </ul>	<b>John Bevan (Environmental Health)</b> , Licensing, Legal Services, Rights of Way



Workstream priority: **Providing positive activities for young people**

Wards affected: Brownhills  
Rushall – Sheffield  
Pelsall

Aims/objectives: Providing a greater range of youth provision by engaging with young people on the types of activities required

Local Issues	Actions ( <b>bold actions completed or ongoing</b> )	Lead and Accountable Partners Involved
1. Segregation of existing youth provision	a) Deliver activities that both young people and older residents can take part in b) Increase provision of outdoor activities c) Promote better use of youth centres by community groups	<b>PC Craig Wall (West Midlands Police), Tony Brown (Integrated Young People's Support Services)</b> , Walsall Housing Group, Safer Walsall Partnership, NHS Walsall, Walsall Adult Community College
2. Improve youth activities at Sheffield Academy	a) Provide intergenerational activities b) Improve perceptions of youth facilities c) Increase greater use of the Common for youth activities while preserving d) Promote Academy facilities	<b>Sybil Sutherland (Sheffield Academy)</b> , Integrated Young People's Support Services, local councillors, Friends Of Pelsall Common, Greenspaces, Walsall Adult Community College
3. Improve youth facilities at Manor Farm Community Association, Rushall	a) Promote engagement with young children and parents b) Consultation to establish the needs of the community – funding approved to undertake a joint consultation c) Promotion of the Community Association	<b>Diane Southall (Manor Farm Community Association)</b> , Integrated Young People's Support Services, Community Development, Walsall Adult Community College
4. Provision of positive activities for young people	a) Introduction of DJ'ing equipment at Pelsall Youth Centre b) Implementation of fitness classes of young people including Zumba	<b>PC Craig Wall (West Midlands Police), Tony Brown (Integrated Young People's Support Services)</b> , Walsall Housing Group, NHS Walsall, Manor Farm Community

	<ul style="list-style-type: none"> <li>c) Provision of roller skating activities</li> <li>d) Provision of support for children, parents and carers at new health centre, library and children's centre</li> <li>e) Provide children and young people with opportunities to develop their skills and life chances through improved reading, literacy and computer skills</li> <li>f) Provide opportunities for intergenerational activities</li> </ul>	Association, Walsall Adult Community College, Libraries, Heritage and Arts
5. Re-open the Canoe Centre	<ul style="list-style-type: none"> <li>a) Re-open centre</li> <li>b) Determine costing for future sustainability</li> <li>c) Publicise the centre and events</li> </ul>	<b>Jan Davies (Brownhills Community Association)</b> , Integrated Young People's Support Services
6. Improvement and upgrade of the Pelsall Play Area	<ul style="list-style-type: none"> <li>a) Apply for external funding</li> <li>b) Upgrade the equipment</li> </ul>	<b>Maureen Payton (Friends of Pelsall Common)</b> , local councillors, Greenspaces

Workstream priority: **Creating cleaner streets and green spaces**

Wards affected: Brownhills  
Rushall – Sheffield  
Pelsall

Aims/objectives: Improve the appearance of housing areas and tackle environmental issues

Local Issues	Actions (bold actions completed or ongoing)	Lead and Accountable Partners Involved
1. Improvements to Play Builders site in Cherwell Drive, Brownhills	<ul style="list-style-type: none"> <li>a) <b>Address safety issues for young children’s access to a busy main road – new fencing erected</b></li> <li>b) Improvements to the appearance of the site needed</li> </ul>	<b>Andrew Cooper (Greenspaces)</b> , Greenspaces, Probation Services, Safer Walsall Partnership, Walsall Housing Group, Street Pride, Walsall Partnership
2. Physical improvements and increased use of the Mound, Brownhills	<ul style="list-style-type: none"> <li>a) Improvements needed to the open space</li> <li>b) Address young people congregating on site and outside shops</li> <li>c) Eliminate intimidation of residents</li> <li>d) <b>Football pitch marked out</b></li> </ul>	<b>Mick Hatchard (Street Pride)</b> , Anti-Social Behaviour Unit, Integrated Young People’s Support Services
3. Physical improvements to The Drive, Sheffield	<ul style="list-style-type: none"> <li>a) <b>New fence erected and litter pick completed</b></li> <li>b) Estates to look at the possibility of transferring the land to Walsall Housing Group</li> </ul>	<b>Caulie Grant (Street Pride)</b> , Probation Services, Safer Walsall Partnership, Estates
4. Physical improvements and improved use of Bush Grove, Pelsall	<ul style="list-style-type: none"> <li>a) <b>Land ownership has been established as Wollaston Properties via Land Registry</b></li> <li>b) Clean up and removal of fencing to stop under-age drinking and anti-social behaviour</li> </ul>	<b>Councillor Longhi</b> , Severn Trent Water, Environmental Health, Estates, Anti-Social Behaviour Unit

<p>5. Improvements to public areas in Brownhills</p>	<p>a) <b>Notice board erected on the High Street with keys given to Chair of the Brownhills Town Centre Partnership</b>  b) <b>Highways and Street Pride undertaking day-to-day monitoring of street signage</b>  c) Environmental improvements through In Bloom programme  d) Gateway improvements  e) Environmental improvements to Pelsall Common Play Area  f) Environmental improvements to Rushall parks</p>	<p><b>Sarah Wynn (Brownhills Town Centre Partnership)</b>, Street Pride, Town Centre Partnership, Highways, District Centre Management, Greenspaces</p>
<p>6. Re-establish Street Champions</p>	<p>a) Establish community litter picks  b) Identify sites of concern</p>	<p><b>Caulie Grant (Street Pride)</b>, Reassurance Team, Walsall Housing Group, Environmental Health</p>
<p>7. Establishment of a Jubilee commemorative garden</p>	<p>a) <b>Area of land identified in Shelfield</b>  b) <b>Planning permission granted for change of use</b>  c) Design to be commissioned and implemented  d) Engage Walsall Adult Community College to contribute to improvements through a horticulture project</p>	<p><b>Councillor Carpenter</b>, Autumn Close Residents Association, Greenspaces, Street Pride, Walsall Adult Community College</p>
<p>8. Conditions of roads</p>	<p>a) Highway maintenance planned for Green Lane, Highfield Road, New Street and Lothians Road</p>	<p><b>John Myatt (Highways)</b></p>
<p>9. Environmental clean up of Rushall Playing Fields</p>	<p>a) Removal of flytipping and drug paraphernalia  b) Improve security for users</p>	<p><b>Councillor Carpenter</b>, Street Pride, Greenspaces, Community Payback</p>

10. Environmental clean up of Pelsall Common	<ul style="list-style-type: none"> <li>a) <b>Remove flytipping and rubbish by involving local residents</b></li> </ul>	<b>Ann Smith (Green Spaces)</b> , Friends of Pelsall Common, local councillors, Community Development
11. Environmental clean up of High Heath Park, Shelfield	<ul style="list-style-type: none"> <li>a) <b>Remove flytipping and rubbish by involving local residents</b></li> </ul>	<b>Barbara Caine (Friends of High Heath Park)</b> , Greenspaces, Community Development
12. Physical improvements in Roundhill Way, Brownhills West	<ul style="list-style-type: none"> <li>a) <b>Establish ownership of land</b></li> <li>b) <b>Determine costings for erection of fence panel to improve security</b></li> <li>c) Arrange litter pick</li> </ul>	Councillor Cassidy, Street Pride
13. Improve physical appearance of run-down properties in Shelfield	<ul style="list-style-type: none"> <li>a) <b>Hold meeting with all partners concerned to agree action plan</b></li> <li>b) <b>Establish tenure of property</b></li> <li>c) Trace and locate owner of the property</li> <li>d) Investigate funding available to upgrade property</li> <li>e) Explore legal options available</li> </ul>	<b>Ranjit Kaur (Area Manager)</b> , Environmental Health, Housing Standards, Planning Enforcement, Social Care & Inclusion, Regeneration
14. Establishment of clear boundaries in Rushall and Shelfield areas on Lichfield Road	<ul style="list-style-type: none"> <li>a) Explore feasibility of erection of signs</li> <li>b) <b>Establish costs for implementation of signs on street lamps</b></li> <li>c) <b>Establish costs for metal signs</b></li> </ul>	<b>Councillor Carpenter</b> , Highways, Amey
15. Install pedestrian safety barriers in Leighs Road, Shelfield	<ul style="list-style-type: none"> <li>a) <b>Clarify ownership of land</b></li> <li>b) Establish costs for safety barriers</li> </ul>	<b>Councillor Carpenter</b> , Highways
16. Physical improvements to unused railway line in	<ul style="list-style-type: none"> <li>a) Confirm if site is still owned by Network Rail</li> <li>b) Confirm ownership of land next to railway</li> </ul>	<b>Ranjit Kaur (Area Manager)</b> , Anti-Social Behaviour Unit, Brownhills Comprehensive

Oakenhayes Drive, Brownhills	site c) Arrange meeting with Network Rail and other site owners d) Arrange clean up of site e) Improve security of area	School
------------------------------	--	--------

Workstream priority: **Reducing health inequalities**

Wards affected: Brownhills  
Rushall – Sheffield  
Pelsall

Aims/objectives: Tackling health issues of concern to residents

Local Issues	Actions ( <b>bold actions completed or ongoing</b> )	Lead and Accountable Partners Involved
1. Awareness of healthy lifestyle actions	a) Identify specific Health Profiles that map local health issues on a local neighbourhood basis to guide awareness campaigns <b>b) Discuss local health issues at themed Area Community meeting to highlight priorities</b> c) Integrate with Walsall College's 'Be Healthy' Week d) Provision of health information and services at the new health centre, library and children's centre	<b>Lesley Dews/Barbara Watt (NHS Walsall Public Health), Alan Jarvis (Community Health)</b> , Sure Start Children's Centres, pharmacies, Walsall Housing Group, Extended Schools Co-ordinators, Aldridge Children's Area Partnership, Pollution Control, GPs, Green Spaces, Libraries, Heritage and Arts
2. Obesity in young children	a) Support partnership work to contribute to Childhood Healthy Weight Needs Assessment b) Map fast food outlets and work with councillors and Planning to limit additional outlets, particularly in vicinity of school gates c) Increase awareness within whole community of family-based weight management services and increase number of referrals d) Incorporate Healthy Weight Strategy recommendations into Area Plan	<b>Jo Hudson/Susie Gill (NHS Walsall Public Health), John Palmer (Children's Area Partnership)</b> , Walsall Community Health, local primary schools, Sheffield Academy, Sport and Leisure, Planning, Transport, Walsall College, Sport and Leisure, Walsall Adult Community College, Extended Schools Co-ordinators, Walsall Housing Group, Green Spaces

	<ul style="list-style-type: none"> <li>e) Partners to encourage active and healthy lifestyles by looking at provision of physical activity services and making the healthy diet option an easy option</li> <li>f) Ensure that the impact on obesity is considered as a priority when making local decisions around other Area Plan priorities</li> <li><b>g) Deliver workshops explaining obesity issues for Year 6 children – first sessions held with children and parents</b></li> <li>h) Signpost young people who require further support to Fun 4 Life Clinics – community-based weight management programmes</li> <li>i) Deliver WAY 4WARD – a one-to-one lifestyle advice and support mechanism that includes recommendations for exercise based on individual circumstances</li> </ul>	
3. Alcohol consumption by young people	<ul style="list-style-type: none"> <li>a) Deliver sessions for young people to make them aware of the effects of long-term alcohol consumption</li> <li>b) Integrate with Walsall College's 'Be Healthy' Week</li> <li>c) Integrate with Walsall Adult Community College's Family Learning programme</li> <li>d) Establish clear referral pathways into specialist young people's drug and alcohol treatment services</li> </ul>	<b>Fiona Campbell (Integrated Young People's Support Services)</b> , local primary schools, Walsall Link, Aldridge Children's Area Partnership, NHS Walsall, Walsall College, Walsall Adult Community College, Drug & Alcohol Action Team, Crime Reduction Initiatives, T3
4. Sexual health issues	<ul style="list-style-type: none"> <li>a) Ensure area has appropriate access to Chlamydia screening by mapping out where tests can be obtained</li> </ul>	<b>Rabina Ayaz/Barbara Watt/Jo Wood (NHS Walsall Public Health)</b> , Integrated Young People's Support Services, GPs, Walsall



	<ul style="list-style-type: none"> <li>b) Increase participation in screening and promote sexual health through youth and educational settings</li> <li>c) Improve signposting of services</li> <li>d) Integrate with Walsall College's 'Be Healthy' Week</li> </ul>	College, Walsall Housing Group, NOW steering group, colleges and schools
5. Substance misuse by young people	<ul style="list-style-type: none"> <li>a) Deliver sessions to young people to make them more aware of the dangers of substance misuse</li> <li>b) Integrate with Walsall College's 'Be Healthy' Week</li> <li>c) Integrate with Walsall Adult Community College's Family Learning programme</li> <li>d) Establish clear referral pathways into specialist young people's drug and alcohol treatment services</li> </ul>	<b>Fiona Campbell (Integrated Young People's Support Services)</b> , Walsall College, Walsall Adult Community College, Drug & Alcohol Action Team, Crime Reduction Initiatives, T3, Walsall Link, Aldridge Children's Area Partnership, NHS Walsall
6. Smoking and Chronic Obstructive Pulmonary Disease (COPD)	<ul style="list-style-type: none"> <li>a) Address smoking levels by promoting help to quit initiatives</li> <li>b) Deliver Healthy Houses initiatives</li> <li>c) Check availability and accessibility of respiratory services feeding back to commissioners</li> <li>d) Increase awareness of Health Trainer Service and health promotion events (whole family)</li> <li>e) Promote NHS Health Check programme to identify conditions earlier</li> <li>f) Promote Expert Patient programmes for those with a long-term condition</li> </ul>	<b>Nicola Humphrey (NHS Walsall Public Health), Fran Fahy/Karen Goldsmith (Smoking Cessation Services)</b> , Walsall Community Health, Walsall Housing Group, Regeneration, Leisure Services, Sure Start Children's Centres

7. Increase breastfeeding rates	<ul style="list-style-type: none"> <li>a) Raise awareness of availability of Maternal and Early Years Service to pregnant women who have BMI above 30, increasing referrals from GPs and other health professionals</li> <li>b) Promote breastfeeding support service including home visits and telephone support</li> <li>c) Deliver breastfeeding support groups at local Sure Start Children's Centres</li> <li>d) Promote Family Nurse Partnership for young pregnant women who require extra one-to-one support</li> <li>e) Provide Breastfeeding Peer Support service for teenagers</li> </ul>	<b>Rabina Ayaz (NHS Walsall Public Health)</b> , GPs, Maternity Service Liaison committee, Sure Start Children's Centres
8. Long-term continuation of Aqua Aerobics	<ul style="list-style-type: none"> <li>a) Ensure funding is in place for sustainable use</li> <li>b) Increase take-up of the sessions</li> </ul>	<b>Diane Southall (Manor Farm Community Association)</b> , local councillors, NHS Walsall, Leisure Services

Workstream priority: **Improving support for elderly people**

Wards affected: Brownhills  
Rushall – Sheffield  
Pelsall

Aims/objectives: Improving the mental and physical well being of elderly people

<b>Local Issues</b>	<b>Actions (bold actions completed or ongoing)</b>	<b>Lead and Accountable Partners Involved</b>
1. Awareness of bogus and fraudster callers	<ul style="list-style-type: none"> <li>a) Raise awareness through a variety of media and visits to residents</li> <li>b) Theatre drama booked for March 2011</li> <li>c) Promote through service user planning group, newsletter and provider forums</li> </ul>	<b>Ranjit Kaur (Area Manager)</b> , Walsall Housing Group, Walsall Link, Social Care & Inclusion, West Midlands Police, Reassurance Team, Trading Standards
2. Isolation and lack of support for elderly residents	<ul style="list-style-type: none"> <li>a) Scope commissioned and non-commissioned services within each neighbourhood area to reduce duplication and maximise opportunities</li> <li>b) Promote existing support groups to all residents through a directory of service for elderly residents and existing events</li> <li>c) Develop opportunities to connect different groups together to improve provision</li> <li>d) Promote luncheon clubs</li> <li>e) Promote 'Taste for Life' services</li> <li>f) Increase activities in nursing homes accessible for local people</li> </ul>	<b>Delia Brownsill (Joint Commissioning Unit), Tracey Simcox (Social Care &amp; Inclusion)</b>
3. Lack of a vailability of social and physical activities for elderly people	<ul style="list-style-type: none"> <li>a) Promote programme of existing social activities</li> <li>b) Speak to local groups to identify gaps in</li> </ul>	<b>Delia Brownsill (Joint Commissioning Unit), Tracey Simcox (Social Care &amp; Inclusion)</b> , Sport and Leisure, Walsall Adult

	<p>activities</p> <p>c) Develop new activities to increase range of social activities</p> <p>d) Walsall College students providing hair and beauty treatments to residents</p> <p>e) Over 60's keep fit classes to be introduced</p> <p>f) Examine the feasibility of introducing Salsa classes</p> <p>g) Co-ordinate a range of specialised programmes aimed at older people and people who suffer with medical conditions including includes community cardiac rehab Health Walk programme and Community Falls Prevention</p> <p>h) Deliver Time 2 Change project to give targeted exercise recommendations to adults</p>	Community College
4. Coffee morning with local elderly residents at Rushall Community Centre	<p><b>a) Arrange date and time with Manor Farm Community Association</b></p> <p><b>b) Target and leaflet elderly residents in the area</b></p> <p><b>c) Invite relevant partners</b></p> <p>d) Consider taster sessions in exercise classes</p> <p>e) Engage with residents to identify needs</p> <p><b>f) Invite Welfare Benefits team to ensure benefit entitlements are correct</b></p>	<b>Diana Southall (Manor Farm Community Association)</b> , Walsall Housing Group, NHS Walsall, Welfare Benefits, West Midlands Police, Social Care & Inclusion
5. Coffee morning with local elderly residents at Leyland Croft Community Centre	<p>a) Check feasibility of using the community room</p> <p>b) Arrange date and time for a coffee morning</p> <p>c) Invite relevant partners</p> <p>d) Invite Welfare Benefits team</p>	<b>Jayne Cooper (Walsall Housing Group)</b>

	e) Engage with residents to identify needs	
6. Establish long-term sustainability of Twin Crescent Friendship Group, Pelsall	<ul style="list-style-type: none"> <li>a) <b>Meet with the group and establish role</b></li> <li>b) Explore long-term funding options</li> <li>c) <b>Secure rent for the next financial year</b></li> <li>d) Increase membership of the group</li> <li>e) Re-introduce mental health worker to the group</li> <li>f) Introduce physical activities for exercise</li> </ul>	<b>Ranjit Kaur (Area Manager)</b> , Social Care & Inclusion, Neighbourhood Community Officer, local councillors

## AREA COMMUNITY PLAN ACTIONS – ALDRIDGE AND BEACON

Workstream priority: **Tackling anti-social behaviour and crime**

Wards affected: Aldridge North & Walsall Wood  
Aldridge South & Central  
Pheasey Park Farm  
Streetly

Aims/objectives: Reduce the incidents of crime and anti-social behaviour

Local Issues	Actions (bold actions completed or ongoing)	Lead and Accountable Partners Involved
1. Anti-social behaviour in Berryfields Park, Aldridge	<b>a) Tackling illegal riding of motorcycles</b> <b>b) Installed signage warning against the use of motorcycles on the Park</b> c) Eliminate drug taking d) Addressing dog fouling e) Stop secondary fires through increased deployment of Fire Service cycle team to patrol the Park	<b>Steve Talbot (Greenspaces)</b> , local councillors, West Midlands Police, Safer Walsall Partnership, Dog Warden Service, West Midlands Fire Service, Community Safety
2. Anti-social behaviour in Myatt Avenue, Aldridge	a) Tackle theft of manhole covers and Eurobins b) Stop secondary fires c) Eliminate criminal damage d) Address anti-social behaviour by young people e) Evaluate feasibility of gating area at rear of shops	<b>Karen Bateman (Safer Walsall Partnership)</b> , local councillors, West Midlands Police, Street Pride, Walsall Housing Group, Greenspaces, West Midlands Fire Service, Integrated Young People's Support Services, Environmental Health, Anti-Social Behaviour Unit
3. Anti-social behaviour outside	a) Eliminate petty theft	<b>PC Tony West (West Midlands Police)</b> ,

Tesco, Paddock Lane, Aldridge	<ul style="list-style-type: none"> <li>b) Tackle anti-social behaviour in and around the shop by young people</li> <li>c) Tesco to report all incidents directly to Dave Atkins, Anti-Social Behaviour Unit</li> </ul>	local councillors, Aldridge Science College, Tesco Express, Safer Walsall Partnership, Street Pride, Integrated Young People's Support Services, West Midlands Fire Service, District Centres, Environmental Health
4. Anti-social behaviour outside Morrisons, Anchor Road, Aldridge	<ul style="list-style-type: none"> <li>a) Eliminate petty theft</li> <li>b) Address anti-social behaviour in and around the shop by young people</li> </ul>	<b>PC Tony West (West Midlands Police)</b> , local councillors, Aldridge Science College, St. Francis of Assisi School, Safer Walsall Partnership, Street Pride, West Midlands Fire Service, District Centres, Aldridge Shopping Centre, Environmental Health, Public Safety
5. Anti-social behaviour in Gretton Crescent, Aldridge	<ul style="list-style-type: none"> <li>a) Tackle neighbour disputes</li> <li>b) Stop intimidating and threatening behaviour</li> <li>c) Eliminate criminal damage</li> <li>d) Adopt a zero tolerance approach to racism</li> <li>e) Police to monitor situation</li> </ul>	<b>Sergeant Pete Finch (West Midlands Police)</b> , local councillors, Safer Walsall Partnership, Walsall Housing Group
6. Anti-social behaviour at Oak Park Leisure Centre, Walsall Wood	<ul style="list-style-type: none"> <li>a) Address general anti-social behaviour</li> <li>b) Tackle underage drinking and drug use</li> <li>c) Eliminate litter by installing new bins</li> <li>d) Stop secondary fires</li> <li>e) <b>BBQ in the Park event held in August 2010</b></li> <li>f) <b>Safety barrier installed by KFC</b></li> </ul>	<b>Steve Talbot (Greenspaces)</b> , West Midlands Police, local councillors, Safer Walsall Partnership, Integrated Young People's Support Services, Public Safety, Walsall Housing Group, Street Pride, Oak Park Leisure Centre, KFC, Walsall Wood Football Club, Brownhills & Walsall Wood Children's Area Partnership, West Midlands Fire Service, Environmental Health, Walsall Adult Community College, Drug & Alcohol Action Team, Crime Reduction Initiatives, T3

7. Anti-social behaviour at Hayhead Wood, Aldridge	<ul style="list-style-type: none"> <li>a) <b>Gate to car park locked to remove lewd and indecent behaviour</b></li> <li>b) Clean up litter promptly</li> <li>c) <b>Countryside Services monitoring the situation</b></li> </ul>	Kevin Clements (Greenspaces), West Midlands Police, Safer Walsall Partnership, Ward Councillors, Countryside Services, West Midlands Fire Service
8. Anti-social behaviour on Collingwood Drive, Pheasey	<ul style="list-style-type: none"> <li>a) Address general anti-social behaviour</li> <li>b) Tackle criminal damage</li> <li>c) <b>Dispersal Order in place since December 2010</b></li> <li>d) Change deployment of Domehawk camera</li> <li>e) <b>Cyber Bus deployed by Police weekly</b></li> <li>f) <b>Six months funding awarded via Local Neighbourhood Fund to provide transport for Diversionary Activity for youths to scrambling track at Frank F Harrison</b></li> </ul>	<b>Sergeant Andy Middleton (West Midlands Police)</b> , Safer Walsall Partnership, local councillors, Integrated Young People's Support Services, Neighbourhood Watch, Collingwood Centre, Centro, Walsall Housing Group
9. Anti-social behaviour in Blackwood Road/Park, Streetly	<ul style="list-style-type: none"> <li>a) Address general anti-social behaviour</li> <li>b) Tackle verbal abuse to shop owners and customers</li> <li>c) <b>Cyber Bus deployed by Police weekly</b></li> <li>d) <b>BBQ in the Park event held in October 2010</b></li> </ul>	<b>Sergeant Andy Middleton (West Midlands Police)</b> , local councillors, Safer Walsall Partnership, Greenspaces, Neighbourhood Watch, Integrated Young People's Support Services
10. Anti-social behaviour on Brickyard Road, Aldridge	<ul style="list-style-type: none"> <li>a) Eliminate speeding cars and noise</li> <li>b) Tackle general anti-social behaviour</li> <li>c) <b>Domehawk camera deployed in November 2010</b></li> <li>d) <b>Flashing sign installed in November 2010</b></li> <li>e) <b>Police monitoring situation</b></li> </ul>	<b>Sergeant Andy Middleton (West Midlands Police)</b> , local councillors, Safer Walsall Partnership
11. Eliminate short-term hotspots	a) Deployment of Apache CCTV where	<b>Inspector Lisa Robson (West Midlands</b>



of anti-social behaviour	appropriate	<b>Police</b> ), local councillors, Anti-Social Behaviour Unit
12. Crime suffered by local businesses	a) Implement a Smartwater business watch programme	<b>Antonia Pompa (District Centre Management)</b> , West Midlands Police
13. Anti-social behaviour in Bridgewater Close	a) Eliminate nuisance from young people relating to vandalism and flytipping b) Erect steel palisade fencing to prevent access to site and rear gardens	<b>Cheryl Holdcroft (Walsall Housing Group)</b> , West Midlands Police, Street Pride

Workstream priority: **Provide positive activities for young people**

Wards affected: Aldridge North & Walsall Wood  
Aldridge South & Central  
Pheasey Park Farm  
Streetly

Aims/objectives: Bring about all-inclusive improvements to the development of young people in the area

Local Issues	Actions (bold actions completed or ongoing)	Lead and Accountable Partners Involved
1. Establish community hub at Blackwood Park Pavilion, Streetly	a) Create facilities for older people, young people and mothers and toddlers b) Create hot desk facility for rangers, Police Community Support Officers, Area Manager and other partners <b>c) Greenspaces applying for external funding</b>	<b>Bruce Mackay (Greenspaces)</b> , local councillors, West Midlands Police, Neighbourhood Watch, Friends of Blackwood Park, Street Pride, West Midlands Fire Service, Regeneration, Integrated Young People's Support Services, Walsall College
2. Alcohol consumption by young people	a) Implement awareness sessions for young people to make them aware of the effects of long-term alcohol consumption b) Integrate with Walsall College's 'Be Healthy' Week c) Integrate with Walsall Adult Community College's drugs awareness programme d) Establish clear referral pathways into specialist young people's drug and alcohol treatment services e) Develop 'Identification and Brief Advice Training' for working with young people	<b>Pauline Bird (Brownhills &amp; Walsall Wood Children's Area Partnership)</b> , Aldridge Children's Area Partnership, Pelsall, Rushall & Shelfield Children's Area Partnership, Streetly Children's Area Partnership, Pheasey & Paddock Children's Area Partnership, Integrated Young People's Support Service, local councillors, West Midlands Police, Trading Standards, NHS Walsall, Safer Walsall Partnership, Area Manager, Children's Services, SERCO, Walsall College, Walsall Adult Community College, Drug & Alcohol Action Team, Crime Reduction Initiatives, T3, Walsall Community

		Health Adult Lifestyle Services Team
3. Health and well-being of young people	<ul style="list-style-type: none"> <li>a) Implement awareness sessions of general health and social issues for young people</li> <li>b) Integrate with Walsall College's 'Be Healthy' Week</li> <li>c) Deliver Fun 4 Life, Skilz 4 Sport, Fitzone, WAY 4WARD and SPLASH</li> <li>d) Integrate with Walsall Adult Community College's Family Learning programme</li> </ul>	<b>Jan Madeley (Integrated Young People's Support Services)</b> , NHS Walsall, West Midlands Police, local councillors, Brownhills & Walsall Wood Children's Area Partnership, Aldridge Children's Area Partnership, Streetly Children's Area Partnership, Pheasey & Paddock Children's Area Partnership, Children's Services, SERCO, Walsall College, Sport and Leisure, Walsall Adult Community College
4. Safeguarding vulnerable children	<ul style="list-style-type: none"> <li>a) Identify gaps in current provision</li> <li>b) Implement actions that fill gaps</li> <li>c) Integrate with Walsall College's 'Be Healthy' Week</li> </ul>	<b>Jan Madeley (Integrated Young People's Support Services)</b> , West Midlands Police, local councillors, Brownhills & Walsall Wood Children's Area Partnership, Aldridge Children's Area Partnership, Streetly Children's Area Partnership, Pheasey & Paddock Children's Area Partnership, Children's Services, SERCO, Walsall College, Sport and Leisure, Walsall Adult Community College
5. Social inclusion of young people and progression to adulthood	<ul style="list-style-type: none"> <li>a) Identify gaps in current provision</li> <li>b) Implement actions that fill gaps</li> <li>c) Integrate with Walsall College's 'Be Healthy' Week</li> </ul>	<b>Jan Madeley (Integrated Young People's Support Services)</b> , West Midlands Police, local councillors, Brownhills & Walsall Wood Children's Area Partnership, Aldridge Children's Area Partnership, Streetly Children's Area Partnership, Pheasey & Paddock Children's Area Partnership, Children's Services, SERCO, Walsall

		College, Walsall Adult Community College
6. Increase out-of-school provision	<p>a) <b>Showcase local providers of out-of-school activities which the schools can purchase depending on the popularity of the activity</b></p> <p>b) <b>Event held at Oak Park Leisure Centre in November 2010</b></p> <p>c) Integrate with Walsall Adult Community College's Family Learning programme</p>	<b>Angie Porter (Children's Services)</b> , SERCO, Integrated Young People's Support Services, local councillors, Libraries, Walsall Wood Scouts, Sutton Coldfield Tennis Club, Oak Park Leisure Centre, all Aldridge schools, all Walsall Wood schools, all Streetly schools, Walsall College, Sport and Leisure, Walsall Adult Community College
7. Increase social activities for young people	<p>a) Set up BBQs to consult with young people who congregate in anti-social behaviour hot-spots</p> <p>b) Consult to break down barriers and remove perception of young people causing anti-social behaviour</p> <p>c) <b>BBQ held at Oak Park in August 2010</b></p> <p>d) <b>BBQ held at Blackwood Park in September 2010</b></p> <p>e) Provide taster sessions in the Fitzone Young Person's Gyms</p>	<b>Sergeant Andy Middleton (West Midlands Police)</b> , Integrated Young People's Support Services, local councillors, Safer Walsall Partnership, Greenspaces, Street Pride, Neighbourhood Watch, Walsall College, Sport and Leisure, Walsall Adult Community College
8. Improve engagement and consultation events with young people	<p>a) <b>Event organised by Integrated Young People's Support Services at Dartmouth Youth Centre in September 2010</b></p> <p>b) Ensure partnership work and joined-up approach for organisations providing activities for young people</p> <p>c) Integrate with Walsall College's 'Be Healthy' Week</p> <p>d) Link to Walsall College's Learner Voice</p>	<b>Isabel Vanderheeren (Integrated Young People's Support Services)</b> , West Midlands Police, Children's Services, SERCO, Brownhills & Walsall Wood Children's Area Partnership, Aldridge Children's Area Partnership, Streetly Children's Area Partnership, Pheasey & Paddock Children's Area Partnership, local councillors, Safer Walsall Partnerships,

	activity and Student Conference	Sport & Leisure, Libraries, Collingwood Community Association, Walsall Domestic Violence Forum, Preventative Services, Social Care & Inclusion, Regeneration, Walsall Housing Group, Streetly Community Association, NHS Walsall, Teenage Pregnancy Unit, Walsall College, Walsall Adult Community College
9. Establish Junior Neighbourhood Watch	<p>a) Roll-out Junior Neighbourhood Watch across the area</p> <p><b>b) £2,800 funding awarded to Junior Neighbourhood Watch to increase provision</b></p>	<b>Tony Marshall (Neighbourhood Watch),</b> West Midlands Police, local councillors, local schools, Integrated Young People's Support Services, Brownhills & Walsall Wood Children's Area Partnership, Aldridge Children's Area Partnership, Streetly Children's Area Partnership, Pheasey & Paddock Children's Area Partnership

Workstream priority: **Creating cleaner streets and green spaces**

Wards affected: Aldridge North & Walsall Wood  
 Aldridge South & Central  
 Pheasey Park Farm  
 Streetly

Aims/objectives: Work with partners to bring about improvements to streets and green spaces

Local Issues	Actions (bold actions completed or ongoing)	Lead and Accountable Partners Involved
1. Physical improvements to Berryfields Park, Aldridge	a) <b>Damaged fencing has been secured</b> b) <b>Shrubs have been thinned out around perimeter to open up visibility</b> c) Improve access	<b>Steve Talbot (Greenspaces)</b> , local councillors, West Midlands Police, Safer Walsall Partnership, Dog Warden Service, West Midlands Fire Service, Community Safety
2. Physical improvements at Oak Park Leisure Centre, Walsall Wood	a) <b>Leisure Centre have fixed broken lighting at rear of the building</b> b) Access to be improved	<b>Steve Talbot (Greenspaces)</b> , West Midlands Police, local councillors, Safer Walsall Partnership, Integrated Young People's Support Services, Community Safety, Walsall Housing Group, Street Pride, Oak Park Leisure Centre, KFC, Walsall Wood Football Club, Brownhills & Walsall Wood Children's Area Partnership, West Midlands Fire Service, Environmental Health
3. Physical improvements at Hayhead Wood, Aldridge	a) Improve fencing and barriers b) Remove litter c) <b>Trees and shrubs between car park and road cut back</b> d) <b>Countryside Services monitoring the situation</b>	<b>Kevin Clements (Greenspaces)</b> , West Midlands Police, Model Aircraft Club, Safer Walsall Partnership, local councillors, Countryside Services, West Midlands Fire Service

<p>4. Flytipping on Dumblederry Lane, Aldridge</p>	<p>a) Remove litter and waste  <b>b) Street Pride blocked highway to prevent further flytipping</b>  <b>c) Planning permission granted for fencing to be erected around building</b>  <b>d) Permission granted for crowning of Willow Trees</b></p>	<p><b>Mick Hatchard (Street Pride)</b>, West Midlands Police, Environmental Health, local councillors, West Midlands Fire Service</p>
<p>5. Re-establish Street Champion programme</p>	<p>a) Establish volunteer groups  b) Undertake community clean-ups  <b>c) Street Champions identified</b></p>	<p><b>John Morris (Area Manager)</b>, Street Champions, Street Pride, Greenspaces, Ward Councillors, West Midlands Police, Rights of Way, Environmental Health, Safer Walsall Partnership, Neighbourhood Watch, Public Safety</p>
<p>6. Business clean-up programme</p>	<p>a) Enlist the help of business and third sector volunteers to carry out clean-up operations  <b>b) Tesco completed clean up in Hall Lane alleyway in November 2010</b></p>	<p><b>John Morris (Area Manager)</b>, local councillors, Safer Walsall Partnership, Public Safety, Tesco, Midcounties Cooperative, NatWest, Vflex-Rathbone</p>
<p>7. Increase recycling</p>	<p>a) Promote recycling with communities and businesses  b) 'Love Food, Hate Waste' event planned for March 2011  c) Integrate with Walsall Adult Community College's environment sustainability programme</p>	<p><b>Heather Growcott (Street Pride)</b>, West Midlands Police, local councillors, Safer Walsall Partnership, Public Safety, Greenspaces, local schools, Walsall Adult Community College</p>
<p>8. Condition of void properties</p>	<p>a) Reduce visual impact  b) Remove danger to public</p>	<p><b>Paul Rooney (Environmental Health)</b>, West Midlands Police, local councillors, Safer Walsall Partnership, Public Safety, Greenspaces, Walsall Housing Group,</p>

		Street Pride
9. Physical improvements to Aldridge Village Centre	a) Environmental improvements through In Bloom programme b) Gateway improvements	<b>Antonia Pompa (District Centre Management)</b>



Workstream priority: **Providing support for people aged over 50**

Wards affected: Aldridge North & Walsall Wood  
Aldridge South & Central  
Pheasey Park Farm  
Streetly

Aims/objectives: Work with partners to bring about improvements for elderly people

Local Issues	Actions (bold actions completed or ongoing)	Lead and Accountable Partners Involved
1. Effectiveness of existing support services for elderly people	a) Develop pilot activity to increase the level of service and social inclusion b) Aspire to keep people independent and active longer <b>c) £2,000 funded to Collingwood Centre towards kitchen equipment improvements</b> d) Deliver Time 2 Change project to give targeted exercise recommendations to adults e) Deliver Community Falls Prevention programme to increase confidence in terms of risk of falling	<b>Nigel Marsh (Social Care &amp; Inclusion)</b> , local councillors, West Midlands Police, West Midlands Fire Service, NHS Walsall, Community Development, Collingwood Community Association, Pheasey Park Farm Community Centre, Beacon Day Centre, Sport and Leisure
2. Localisation events using First Stop Express	a) Offer services and advice from local area locations <b>b) Event held at Streetly Community Association in September 2010</b> <b>c) Event held at St. Martin's Church in September 2010</b> <b>d) Event held at Collingwood Centre in October 2010</b> <b>e) Timetable of events produced for</b>	<b>Jez Holding (Customer Service Centre)</b> , local councillors, Safer Walsall Partnership, West Midlands Police, West Midlands Fire Service, NHS Walsall, St. Martin's Church, Streetly Community Association, Collingwood Community Association, Neighbourhood Watch

	<b>February and March 2011</b>	
3. Help and advice on personal safety	a) Reassurance visits to Police House b) <b>Deliver practical help and advice on property security</b> c) <b>Event held in September 2010</b>	<b>Mark Ledo (West Midlands Police)</b> , local councillors, Neighbourhood Watch, Sunnymead Tenants & Residents Association, Walsall Older People's Project, The Sunshine Club, Safer Walsall Partnership, Walsall Adult Community College
4. Support for elderly homelessness	a) Increase the safety of homeless elderly people within the area b) Ensure homeless elderly people receive the necessary help and support	<b>Stacey Senior (Social Care &amp; Inclusion)</b> , Greenspaces, Hi's 'n' Lows, The Glebe Centre, Caldmore Housing, Walsall Housing Group, Supported Housing, Countryside Services, Job Centre Plus
5. Access to welfare rights and benefits	a) Promote welfare rights and entitlements for elderly people b) Deliver awareness events	<b>Ian Jones (Welfare Rights)</b> , local councillors Streetly Community Association, Collingwood Community Association, Walsall Adult Community College

Workstream priority: **Improve road and pavement maintenance**

Wards affected: Aldridge North & Walsall Wood  
Aldridge South & Central  
Pheasey Park Farm  
Streetly

Aims/objectives: Work with partners to bring about improvements to road and pavement maintenance and make them as safe as possible

<b>Local Issues</b>	<b>Actions (bold actions completed or ongoing)</b>	<b>Lead and Accountable Partners Involved</b>
1. Condition of right of way, Hall Lane, Walsall Wood	a) Clarify ownership b) Clean-up and resurfacing	<b>Jo Sheeran (Rights of Way)</b> , Street Pride, Greenspaces, local councillors
2. Condition of Walsall Wood Lorry Park	a) Co-ordinate a number of local and potential issues	<b>Rachel Telfer (Transportation Planning)</b> , Regeneration, Highways, Parking Services, local councillors, West Midlands Police, West Midlands Fire Service
3. Condition of alleyway between Chester Road and Thorney Road, Streetly	a) Install gate to reduce access and anti-social behaviour	<b>Jo Sheeran (Rights of Way)</b> , Safer Walsall Partnership, local councillors, West Midlands Police, Greenspaces
4. Improvements to parking and traffic flow around Blackwood Road, Streetly	a) Tackle speeding cars b) Improve parking	<b>Rachel Telfer (Transportation Planning)</b> , Regeneration, Highways, Parking Services, local councillors, District Centre Management, Neighbourhood Watch, West Midlands Police, Street Pride, Blackwood School, St. Ann's School, Streetly Library
5. Condition of footpaths	a) Undertake estate walks programme to identify potential maintenance issues	<b>Linda Lister (Walsall Housing Group)</b> , <b>Vicky Oakley (NHS Walsall)</b> , West

	b) Proactively identify potential for falls on footpaths	Midlands Police, local councillors, West Midlands Fire Service, Street Pride, Highways, Centro
6. Improvements to bus stops and bus routes	a) Liaise with local bus users to identify improvements b) <b>Walsall Transport Users Forum scheduled for February 2011</b>	<b>Fiona Ward (Centro)</b> , Highways, local councillors, Sunnymead Tenants & Residents Association
7. General condition of roads	a) Walked safety inspections of the public highway routinely undertaken to identify, prioritise and action any defects for rectification b) Highways maintenance planned for Beechcroft Way, Lazy Hill Road, Maybrook Road and Middlemore Lane	<b>Marion Parry (Highways)</b>
8. Condition of streets in Aldridge Village Centre	a) Improvements to maintenance of pavements, roads and street furniture	<b>Antonia Pompa (District Centre Management)</b>
9. Parking and time zone restrictions for St. Marks Road, Walsall Wood	a) Co-ordinate a number of local and potential issues	<b>Rachel Telfer (Transportation Planning)</b> , Regeneration, Highways, Parking Services, local councillors, West Midlands Police, West Midlands Fire Service, Shire Oak School

Workstream priority: **Reducing health inequalities**

Wards affected: Aldridge North & Walsall Wood  
Aldridge South & Central  
Pheasey Park Farm  
Streetly

Aims/objectives: Tackling health issues of concern to residents

Local Issues	Actions (bold actions completed or ongoing)	Lead and Accountable Partners Involved
1. Awareness of healthy lifestyle actions	a) Identify specific Health Profiles that map local health issues on a local neighbourhood basis to guide awareness campaigns b) Discuss local health issues at themed Area Community meeting to highlight priorities c) Integrate with Walsall College's 'Be Healthy' Week	<b>Lesley Dews/Barbara Watt (NHS Walsall Public Health), Alan Jarvis (Community Health)</b> , Sure Start Children's Centres, pharmacies, Walsall Housing Group, Extended Schools Co-ordinators, Aldridge Children's Area Partnership, Pollution Control, GPs, Green Spaces
2. Obesity in young children	a) Support partnership work to contribute to Childhood Healthy Weight Needs Assessment b) Increase awareness within whole community of family-based weight management services and increase number of referrals c) Incorporate Healthy Weight Strategy recommendations into Area Plan d) Partners to encourage active and healthy lifestyles by looking at provision of physical activity services and provision of making the healthy diet option an easy option e) Ensure that the impact on obesity is considered as a priority when making local	<b>Jo Hudson/Susie Gill (NHS Walsall Public Health), John Palmer (Children's Area Partnership)</b> , Walsall Community Health, local primary schools, Leisure Services, Planning, Transport, Walsall College, Walsall Adult Community College, Extended Schools Co-ordinators, Walsall Housing Group, Green Spaces

	<p>decisions around other Area Plan priorities</p> <p>f) Deliver workshops explaining obesity issues for Year 6 children</p> <p>g) Promote healthy living and lifestyles</p>	
3. Chlamydia reduction	<p>a) Ensure area has appropriate access to screening, promoting where tests can be obtained</p> <p>b) Increase participation in screening and promote sexual health through youth and educational settings</p> <p>c) Increase signposting of services</p> <p>d) Integrate with Walsall College's 'Be Healthy' Week</p>	<p><b>Barbara Watt/Jo Wood/Heidi Mitchell (NHS Walsall Public Health)</b> Integrated Young People's Support Services, GPs, Walsall Housing Group, NOW steering group, colleges and schools</p>
4. Smoking and Chronic Obstructive Pulmonary Disease (COPD)	<p>a) Address smoking levels by promoting help to quit initiatives</p> <p>b) Deliver Healthy Houses initiatives</p> <p>c) Check availability and accessibility of respiratory services feeding back to commissioners</p> <p>d) Increase awareness of Health Trainer Service and health promotion events (whole family)</p> <p>e) Promote NHS Health Check programme to identify conditions earlier</p> <p>f) Promote Expert Patient programmes for those with a long-term condition</p>	<p><b>Nicola Humphrey (NHS Walsall Public Health), Fran Fahy/Karen Goldsmith (Smoking Cessation Services), NHS Community Health, Walsall Housing Group, Sure Start Children's Centres</b></p>
5. Increase breastfeeding rates	<p>a) Raise awareness of availability of Maternal and Early Years Service to pregnant women who have BMI above 30, increasing referrals</p>	<p><b>Rabina Ayaz (NHS Walsall Public Health), GPs, Maternity Service Liaison committee, Sure Start Children's Centres</b></p>

	<p>from GPs and other health professionals</p> <p>b) Promote breastfeeding support service including home visits and telephone support</p> <p>c) Deliver breastfeeding support groups at local Sure Start Children's Centres</p> <p>d) Promote Family Nurse Partnership for young pregnant women who require extra one-to-one support</p> <p>e) Provide Breastfeeding Peer Support service for teenagers</p>	
6. Infant mortality	<p>a) Map out provision of all services and uptake within this area</p> <p>b) Raise awareness of maternal and early years service and increase referrals from pregnant women who have BMI above 30.</p> <p>c) Increase support and uptake to the smoking in pregnancy service</p> <p>d) Increase referrals to genetic counselling service</p>	<p><b>Rabina Ayaz/Rachel Andrews/Lyn Gostling (NHS Walsall Public Health), Fran Fahy/Karen Goldsmith (Smoking Cessation Services)</b>, Healthy Child Programme, Walsall Community Health, Manor Hospital</p>
7. Excessive alcohol consumption amongst adults	<p>a) Promote referrals to health screening</p> <p>b) Integrate with Walsall Adult Community College's drugs awareness programme</p>	<p><b>Nina Chauhan-Lall (NHS Walsall), Alan Jarvis (Walsall Community Health)</b>, Sure Start Children's Centres, Public Safety, Community Development, Walsall Housing Group, Walsall College, Extended Schools Co-ordinators, Social Care &amp; Inclusion, Integrated Young People's Support Services, Children's Area Partnerships, Greenspaces, T3, Addaction, GPs, Walsall Adult Community College, District Centre Management</p>

<p>8. Opportunities for exercise and physical activity</p>	<ul style="list-style-type: none"> <li>a) Develop, promote and evaluate 'Get Active' programmes that aim to involve people in fun activities such as dance, intergenerational ballroom dance, street-dancing and swimming</li> <li>b) Promote active travel to encourage Walking Buses with parents and children</li> <li>c) Co-ordinate and promote sports activities in suitable indoor and outdoor locations</li> <li>d) Develop competitive local teams and tournaments</li> <li>e) Map sport and leisure activities and work in partnership to provide more community facilities</li> <li>f) Promote 'Park and Stride' to encourage parents to park a little distance away from school then walk the remaining distance</li> <li>g) Deliver Time 2 Change project offering advice and support to adults regarding physical exercise</li> <li>h) Increase awareness within whole community of family-based weight management programmes and improve levels of recruitment</li> </ul>	<p><b>Nina Chauhan-Lal/Jo Hudson (NHS Walsall), Alan Jarvis/Hannah Williams (Walsall Community Health),</b> Sure Start Children's Centres, Public Safety, Community Development, Walsall Housing Group, Walsall College, Extended Schools Co-ordinators, Social Care &amp; Inclusion, Integrated Young People's Support Services, Greenspaces, T3, Addaction, GPs, Sport and Leisure, Walsall Adult Community College, Children's Area Partnerships</p>
--	--	---



## AREA COMMUNITY PLAN ACTIONS – NORTH WALSALL

Workstream priority: **Tackling anti-social behaviour and crime**

Wards affected:     Birchills Leamore  
                           Blakenall  
                           Bloxwich East  
                           Bloxwich West

Aims/objectives:    Empower the community to build resilient neighbourhoods where people are respectful and feel safe

Local Issues	Actions (bold actions completed or ongoing)	Lead and Accountable Partners Involved
1. Support for victims of violent crime	<b>a) Raise awareness of violent crime and domestic abuse</b> <b>b) Increase support for victims</b> <b>c) Focus campaign on young people through schools and college</b> <b>d) Promote victim support at Hate Crime event in May at Walsall College</b>	<b>Inspector Mark Bromhall Steventon (West Midlands Police)</b> , Walsall Housing Group, Beechdale Community Housing Association, NHS Walsall, Walsall College, Drug Action Team, all North Walsall schools, all North Walsall Children’s Area Partnerships, Walsall Adult Community College
2. Serious acquisitive crime – theft and burglary	<b>a) Target shop theft in Bloxwich with retail crime initiative in Bloxwich district centre</b> <b>b) Target domestic burglary with confidential covert initiatives</b> <b>c) Active operation underway in Coalpool</b>	<b>Sergeant Carl Steventon (West Midlands Police), Nikki Rolls (District Centre Management)</b> , Bloxwich Business Partnership, Walsall College
3. High levels of anti-social behaviour in hotspot areas	<b>a) Identify and target hotspots with enforcement activity in Coalpool, Mossley, Beechdale, Blakenall and Poets Estate</b>	<b>Inspector Mark Bromhall/Sergeant Carl Steventon (West Midlands Police)</b> , Anti-Social Behaviour Unit, Walsall Housing Group, Beechdale Community Housing

	<ul style="list-style-type: none"> <li><b>b) Deployment of CCTV in priority hotspots</b></li> <li><b>c) Dispersal order on the Mossley estate due to gangs congregating, stealing from shops and causing bus shelter damage – camera installed on bus shelter and consultation and programme of engagement planned</b></li> <li><b>d) Anti-social behaviour at back of properties on Glastonbury Crescent – fencing to be installed</b></li> <li><b>e) Abandoned football ground on Glastonbury Crescent subject to anti-social behaviour and arson – seeking new leasee</b></li> <li><b>f) British Transport Police increased patrol operations over Halloween and bonfire night period at Bloxwich Railway Station</b></li> <li><b>g) Anti-social behaviour reduced around Green Lane (by the shops and Baptist Church) through increased patrols, removing benches, installing railings trees thinned – young people reminded of ‘Respect’ initiative at Walsall College</b></li> <li><b>h) Anti-social behaviour reduced by the Play Builders site, (Penkridge Close) through deployment of CCTV, diversionary sports activities and fencing erected – unused equipment removed</b></li> <li><b>i) Increased police patrols and deterrent posters displayed at Goscote Allotments after theft and vandalism</b></li> <li><b>j) Addressing off-road bikes and flytipping</b></li> </ul>	<p>Association, Integrated Young People’s Support Services, West Midlands Fire Service, Reassurance Team, Walsall College, Greenspaces, Centro, Accord Housing Association, Burrowes Street Tennant Management Organisation, Mercian Housing Association</p>
--	--	--

	<p><b>on Whatley Playing Fields</b></p> <p><b>k) Anti-social behaviour, roaming horses and flytipping on the Goscote Place estate – anti-social behaviour addressed, fencing and gate replaced, lighting improved, horses tethered, clean-up and skip day a success</b></p> <p><b>l) Promote reporting mechanisms to residents to report anti-social behaviour</b></p> <p><b>m) Improve support for individuals who witness anti-social behaviour so they can report issues without fear of harassment or intimidation</b></p> <p><b>n) Target young people using off-road bikes inappropriately with a view to referring them on scrambling track programmes at Frank F Harrison</b></p> <p><b>o) Increase the number of trained mediators to assist in settling neighbour disputes</b></p> <p>p) Target low level noise complaints by promoting tolerance</p> <p>q) Gates and fencing to be erected to block off Mackay Road garage site to stop flytipping and abandoned cars</p> <p>r) Improve CCTV at high rise blocks in Bloxwich including controlled monitoring for Jones House and Smith and Thomas House</p> <p>s) Improve time of night emergency response patrol service to Jones House and Smith and Thomas House</p>	
4. Vandalism and theft from void	<b>a) Use of Smartwater as a deterrent to metal</b>	<b>Inspector Mark Bromhall (West Midlands</b>

<p>properties and derelict buildings</p>	<p><b>theft</b></p> <p>b) Promote awareness programme ‘Eyes and Ears’, Crimestoppers and reward scheme</p> <p>c) Deliver confidential, covert operations</p> <p><b>d) Section 215 served on derelict property in Valley Road</b></p> <p><b>e) Assessing feasibility of converting the Tannery Pub in Birchills to community use</b></p> <p>f) Assess void and derelict properties within Bloxwich town centre</p>	<p><b>Police</b>), Walsall Housing Group , Environmental Health, West Midlands Fire Service, Street Pride, District Centre Management</p>
<p>5. Improve community integration</p>	<p><b>a) Target racist hate crimes and attitudes</b></p> <p><b>b) Identify and target homophobic hate crimes</b></p> <p><b>c) Identify and target hate crimes focused on the vulnerable in the community</b></p> <p><b>d) Improve support for marginalised groups</b></p>	<p><b>Inspector Mark Bromhall/Sergeant Carl Steventon (West Midlands Police)</b>, Beechdale Community Housing Association, Anti-Social Behaviour Unit, Walsall Housing Group, Social Care &amp; Inclusion, Reassurance Team, Children’s Services, Integrated Young People’s Support Services, Walsall College</p>
<p>6. Illegal drugs and alcohol dealing</p>	<p><b>a) Identify hotspots for drug taking</b></p> <p><b>b) Promote the dangers of substance misuse</b></p> <p><b>c) Support family intervention groups</b></p> <p><b>d) Promote needle exchange schemes</b></p> <p><b>e) Remove drug paraphernalia</b></p> <p><b>f) Undertake underage alcohol test purchases</b></p> <p>g) Implement street patrols to identify underage drinkers</p> <p>h) Integrate with Walsall Adult Community</p>	<p><b>Jon Murray (Addaction), Jay Grech (T3), Inspector Mark Bromhall (West Midlands Police)</b>, NHS Walsall, Walsall Housing Group, Hi’s ‘n’ Lows, Walsall College, Integrated Young People’s Support Services, Walsall Adult Community College, District Centre Management</p>

	College's Family Learning programme	
7. Seasonal crime trends	<b>a) Seasonal data now available for intervention planning</b>	<b>Inspector Mark Bromhall/Sergeant Carl Steventon (West Midlands Police)</b> , Anti-Social Behaviour Unit, Walsall Housing Group, Beechdale Community Housing Association, Integrated Young People's Support Services, West Midlands Fire Service, Young Advisors, Walsall College, Greenspaces, Reassurance Team
8. Community involvement in crime reduction initiatives	<b>a) Support the roll out of Neighbourhood Watch schemes</b> <b>b) Implement Junior Neighbourhood Watch scheme</b> <b>c) Implement Street Watch – Birchills Street Watch up and running</b> <b>d) Implement Youth Crime Prevention Panel in secondary schools</b>	<b>Sergeant Carl Steventon (West Midlands Police)</b> , Anti-Social Behaviour Unit, Walsall Housing Group, Beechdale Community Housing Association, Integrated Young People's Support Services, West Midlands Fire Service, Young Advisors, Walsall College, Greenspaces, Reassurance Team, Neighbourhood Watch
9. Crime suffered by local businesses	a) Implement a Smartwater business watch programme within Bloxwich Town Centre	<b>Nikki Rolls (District Centre Management)</b> , West Midlands Police

Workstream priority: **Positive activities for young people**

Wards affected: Birchills Leamore  
Blakenall  
Bloxwich East  
Bloxwich West

Aims/objectives: Ensure that young people and their families are at the heart of the provision of positive, varied, safe and fun activities

Local Issues	Actions (bold actions completed or ongoing)	Lead and Accountable Partners Involved
1. Selection and promotion of youth activities	<ul style="list-style-type: none"> <li>a) <b>Young Advisors to engage with young people</b></li> <li>b) <b>Recognise, define and acknowledge social differences and boundaries</b></li> <li>c) <b>Engage ‘Young Champions’ to participate in all stages of activity from planning through to delivery</b></li> <li>d) <b>Ensure use of appropriate media such as web, social media, YouTube, messaging, schools and college</b></li> <li>e) <b>Ensure communication is in a language that young people can identify with</b></li> </ul>	<p><b>Roy Smith (Integrated Young People’s Support Services)</b>, Young Advisors, West Midlands Police, Walsall Housing Group, Beechdale Community Housing Association, Greenspaces, NHS Walsall, Frank F Harrison Community Association, Electric Palace, Extended Schools Co-ordinators, Walsall College, Walsall Adult Community College</p>
2. Provision of good quality youth activities	<ul style="list-style-type: none"> <li>a) <b>Consult with young people to ensure affordability of activities</b></li> <li>b) <b>Conduct needs assessment</b></li> <li>c) <b>Seek to improve and maximise existing provision</b></li> <li>d) <b>Deliver creative ideas workshops</b></li> <li>e) <b>Deliver provision that integrates young people with the wider community</b></li> </ul>	<p><b>Roy Smith (Integrated Young People’s Support Services)</b>, Young Advisors, West Midlands Police, Walsall Housing Group, Beechdale Community Housing Association, Greenspaces, NHS Walsall, Frank F Harrison Community Association, Electric Palace, Extended Schools Co-ordinators, Walsall College, Walsall Adult Community</p>

	<ul style="list-style-type: none"> <li>f) Deliver Vflex-Rathbone/IYPSS young people volunteer schemes to develop leadership skills</li> <li>g) Build capacity of facilitators and ensure sustainability of provision</li> <li>h) Improve GR8 Adventures scheme take-up</li> <li>i) Develop participatory budget scheme</li> <li><b>j) Apply doorstep and hotspot outreach using the Hopper Bus, the Move Truck and the Cyber Bus</b></li> <li><b>k) Focus groups developing sustainable provision at the Young Persons Information Centre in Blakenall</b></li> <li><b>l) Focus Group working with Sneyd Community Association to sustain provision at what will be the Sneyd University Technical College</b></li> <li><b>m) Working with Frank F Harrison Community Association to ensure provision is maintained</b></li> <li><b>n) Developing provision in local church halls with Church Links</b></li> <li><b>o) Move truck team engaged young people at Stephenson Square, Beechdale</b></li> <li><b>p) Move truck team engaged young people on Bloxwich High Street</b></li> <li><b>q) Integrated Young People's Support Services detached youth bus deployed to engage young people in Leamore Park</b></li> <li>r) Integrate with Walsall Adult Community College's Citizen's University programme</li> </ul>	College
--	---	---------

<p>3. Supporting vulnerable and looked-after children</p>	<p>a) Deliver rights and responsibilities of parents campaign  b) Work with school clusters coordinators and schools to increase parent interest  c) Capacity build parent groups to secure funding and organise trips and activities  d) Integrate with Walsall Adult Community College's Family Learning programme</p>	<p><b>Roy Smith (Integrated Young People's Support Services)</b>, West Midlands Police, Walsall Housing Group, Beechdale Community Housing Association, Greenspaces, NHS Walsall, Frank F Harrison Community Association, Electric Palace, Extended Schools Co-ordinators, Children's Services, Walsall Adult Community College</p>
<p>4. Access to sufficient activities during peak times</p>	<p>a) <b>Plan for increase in provision during holidays and other occasions</b>  b) Deliver WAY 4WARD programme for young people offering lifestyle advice  c) Deliver Sports 4 All summer activities  d) Integrate with Walsall Adult Community College's Family Learning programme  e) Promote activities available within Bloxwich Town Centre</p>	<p><b>Roy Smith (Integrated Young People's Support Services)</b>, Young Advisors, West Midlands Police, Walsall Housing Group, Beechdale Community Housing Association, Greenspaces, NHS Walsall, Frank F Harrison Community Association, Electric Palace, Extended Schools Co-ordinators, Walsall College, Sport and Leisure, Walsall Adult Community College, District Centre Management</p>



Workstream priority: **Creating clean streets and open spaces**

Wards affected: Birchills Leamore  
Blakenall  
Bloxwich East  
Bloxwich West

Aims/objectives: Make the area cleaner and make the best use of open spaces

Local Issues	Actions (bold actions completed or ongoing)	Lead and Accountable Partners Involved
1. Occurrence of flytipped sites	<ul style="list-style-type: none"> <li><b>a) Identify land that is subject to ownership ambiguities and clarify</b></li> <li><b>b) Identify and clean up regularly flytipped sites and improve management and deterrent measures</b></li> <li><b>c) Implement prevention measures such as gates, barriers and improved visibility for flytipped sites</b></li> <li><b>d) Communicate duty of care to the community (in different languages) and details of how to discard waste</b></li> <li><b>e) Implement clear-up days to discard bulky items working with scrap metal merchants accordingly</b></li> <li>f) Consider feasibility of working with a social enterprise for collecting bulky items</li> <li><b>g) Identify and map alleyways and public rights of way that are in need of improving</b></li> <li><b>h) Walsall Housing Group led project on Poets Estate to encourage residents to take ownership, display children's</b></li> </ul>	<p><b>Pete Clifford/Caulie Grant (Street Pride),</b> Environmental Health, Greenspaces, Beechdale Community Housing Association, Walsall Housing Group, New Horizons, District Centre Management, Walsall College, Regeneration, Walsall Adult Community College</p>

	<p>artwork, installed CCTV and flytipping removed</p> <p>i) Addressing flytipping problem on Tennyson Road</p> <p>j) Addressing the flytipping problem under the Blue Bridge in Coalpool</p> <p>k) Bunding to be installed on flytipped site, Mills Street</p> <p>l) Flytipping at Caparo site tackled by Agenda 21 community group</p> <p>m) Integrate with Walsall Adult Community College's environment sustainability programme</p>	
2. Level of dog fouling	<p>a) Deliver clean-up campaigns to promote the cleaning up of dog fouling in identified hotspots</p> <p>b) Increase number of dog mess bins at hotspots</p>	<p><b>Pete Clifford/Caulie Grant (Street Pride),</b> Environmental Health, Greenspaces, Beechdale Community Housing Association, Walsall Housing Group, New Horizons, District Centre Management</p>
3. Litter in neighbourhoods	<p>a) Deliver 'Don't drop it - Bin it' campaign with a focus on young people at schools</p> <p>b) <b>Deliver community tidy-up events</b></p> <p>c) <b>Clean up and skip day on Goscote Place estate completed</b></p> <p>d) <b>Clean up day at Ash track, Birchills completed</b></p> <p>e) <b>Clean up day on Mossley estate completed</b></p> <p>f) <b>Clean up day planned for Tennyson Road, Poets, Goscote</b></p> <p>g) <b>Clean up day planned for Beechdale</b></p>	<p><b>Pete Clifford/Caulie Grant (Street Pride),</b> Environmental Health, Greenspaces, Beechdale Community Housing Association, Walsall Housing Group, New Horizons, District Centre Management, Walsall Adult Community College</p>

	<p><b>Estate</b></p> <p><b>h) Clean up day planned for Bloxwich East</b></p> <p><b>i) Clean up day planned for Coalpool</b></p> <p><b>j) Ensure bins are appropriately located</b></p> <p><b>k) Implement Street Watch – established in Birchills</b></p> <p><b>l) Seek to transfer land to community organisations where there is desire for community-led improvements and ownership</b></p>	
4. Disused garage sites	<p><b>a) Identify all disused garage sites</b></p> <p><b>b) Work in partnership to consult on best use of each site</b></p> <p>c) Convert sites for appropriate and beneficial use</p>	<p><b>Alison Hayward (Walsall Housing Group),</b>  Environmental Health, Greenspaces, Street Pride, Beechdale Community Housing Association, Walsall Housing Group, New Horizons, District Centre Management, Walsall College</p>
5. Environmental and social quality of open spaces	<p><b>a) Deliver improvements to Leamore Park, Reedswood Park, Beechdale Park, Goscote corridor, Bloxwich Park and land adjacent to Beechdale canal</b></p> <p><b>b) Skateboard ramp graffiti project in Leamore Park resulted in young people taking ownership of project</b></p> <p><b>c) Fitness equipment to be installed at Reedswood Park</b></p> <p>d) Improve quality of gateways</p>	<p><b>Andrew Cooper (Greenspaces),</b>  <b>Environmental Health, New Horizons, NHS Walsall, West Midlands Police, Friends of Parks,</b> Public Safety, West Midlands Fire Service, Walsall Housing Group, Beechdale Community Housing Association Integrated Young People's Support Services, Electric Palace, Walsall College, Birchills Neighbourhood Board, District Centre Management</p>
6. Use of open spaces	<p>a) Identify and map open space areas with ambiguous, unknown or shared ownership</p> <p>b) Consult to identify best use of open space</p>	<p><b>Andrew Cooper (Greenspaces),</b>  Environmental Health, New Horizons, NHS Walsall, West Midlands Police, Friends of</p>

	<p><b>c) Work with communities to develop creative ideas of use</b></p> <p>d) Seek to transfer land to community ownership where appropriate</p> <p>e) Investigating regeneration of Sydenham Playing Field, Green Lane, to accommodate sports activities</p> <p>f) Flytipped site by canal in Goscote to be converted to community allotments</p> <p>g) Integrate with Walsall Adult Community College's Incredible Edible programme</p>	<p>Parks, Public Safety, West Midlands Fire Service, Walsall Housing Group, Integrated Young Peoples Support Services, Electric Palace, Walsall College, Walsall Adult &amp; Community College, Social Care &amp; Inclusion, Walsall Adult Community College, District Centre Management</p>
<p>7. Condition of roads and pavements</p>	<p>a) Highways maintenance planned for Clarendon Street, Dartmouth Avenue, Elmore Row, Hospital Street and Sandbank</p> <p>b) Improvements to maintenance of pavements and street furniture</p>	<p><b>John Myatt (Highways)</b>, District Centre Management</p>

Workstream priority: **Tackling worklessness**

Wards affected: Birchills Leamore  
Blakenall  
Bloxwich East  
Bloxwich West

Aims/objectives: Support individuals to gain confidence and skills to help them make the most of employment opportunities

Local Issues	Actions (bold actions completed or ongoing)	Lead and Accountable Partners Involved
1. Accurate baseline information	<ul style="list-style-type: none"> <li><b>a) Capture data by ward on unemployment rates, reasons for not working, local job opportunities, skills base</b></li> <li><b>b) Map employment agencies working in the area</b></li> <li><b>c) Develop database of businesses in area, including membership of the Chamber of Commerce</b></li> </ul>	<p><b>Scott Degville (Economic Regeneration),</b> Prospects, Extended Schools Co-ordinators, Children's Centres, Walsall Adult &amp; Community College, Community Development, Walsall College, Worklessness Steering Group, Bloxwich One Stop Shop, District Centre Management</p>
2. Create local employment opportunities	<ul style="list-style-type: none"> <li><b>a) Identify employers skills gaps</b></li> <li>b) Match individuals to opportunities</li> <li>c) Promote and encourage self-employment and facilitate support</li> <li><b>d) Seek to increase childcare provision through Childcare Sufficiency Plan</b></li> <li>e) Seek to understand travel constraints</li> <li>f) Promotion of apprenticeship opportunities with young people</li> <li>g) Deliver Step Up Step Out with Walsall Housing Group to support people into training, education and employment</li> </ul>	<p><b>Scott Degville (Economic Regeneration),</b> Integrated Young People's Support Services, Extended Schools Co-ordinators, Children's Centres, Walsall Adult &amp; Community College, Community Development, Walsall College, Family Information Service, Walsall Adult Community College, District Centre Management, Walsall Housing Group</p>

<p>3. Young people and adults classed as Not in Education, Employment or Training (NEET)</p>	<ul style="list-style-type: none"> <li><b>a) Engage with NEET parents via schools</b></li> <li><b>b) Increase NEET provision in schools, Walsall Academy and University Technical College</b></li> <li>c) Create more courses at neutral locations such as community venues, leisure centres and faith venues</li> <li><b>d) Create more opportunities for volunteering and promote the benefits, linking to Integrated Young People's Support Services young volunteer strategy</b></li> <li><b>e) Deliver creative programmes to develop personal skills and confidence</b></li> <li><b>f) Deliver programmes to develop language and communication skills</b></li> <li><b>g) Project to develop Goscote Lane Adult Training Centre to a community resource centre led by Social Care &amp; Inclusion</b></li> </ul>	<p><b>Scott Degville (Economic Regeneration),</b> Prospects, Extended Schools Co-ordinators, Children's Centres, Walsall Adult &amp; Community College, Community Development, Walsall College, SERCO, all North Walsall Children's Area Partnerships, Social Care &amp; Inclusion, Walsall Adult Community College, Integrated Young People's Support Services</p>
--	--	---

Workstream priority: **Improving educational achievement**

Wards affected: Birchills Leamore  
Blakenall  
Bloxwich East  
Bloxwich West

Aims/objectives: Support schools, parents and children to raise academic standards

Local Issues	Actions (bold actions completed or ongoing)	Lead and Accountable Partners Involved
1. Improve aspiration levels and attitudes	<ul style="list-style-type: none"> <li><b>a) Work with young people and their families with a view to raising aspirations and changing attitudes</b></li> <li>b) Support families with related issues, such as worklessness, lone parent and parents with low educational achievement</li> <li>c) Offer reading and writing courses for parents</li> <li>d) Increase mentoring and provision of role models</li> <li>e) Support young people with issues that impact negatively on their achievement, such as motivation or bullying</li> <li>f) Promote adult learning</li> <li><b>g) Careers Fayre being planned for 350+ year 6 pupils in Bloxwich</b></li> <li><b>h) Careers Fayre for young people 17/18 linked to Acceleration Programme</b></li> <li><b>i) Meet the School Councils project to engage and develop creative thinking about issues</b></li> <li>j) Family Learning Project to be piloted at Frank F Harrison</li> </ul>	<p><b>Sue Wedgwood (SERCO)</b>, Head Teachers, Extended Schools Co-ordinators, Walsall College, all North Walsall Schools, Walsall Adult &amp; Community College, Walsall Adult Community College, Integrated Young People's Support Services</p>

	<ul style="list-style-type: none"> <li>k) Integrate with Walsall Adult Community College's enterprise, confidence building and assertiveness programmes</li> <li>l) Development and delivery of alternative provision through Integrated Young People's Support Services</li> </ul>	
2. Patterns of underachievement	<ul style="list-style-type: none"> <li><b>a) Identify groups that are underachieving</b></li> <li>b) Referral of vulnerable groups to Targeted Youth Support panel</li> <li>c) Develop creative approaches to raising the level of achievement of target groups</li> </ul>	<b>Sue Wedgwood (SERCO)</b> , Head Teachers, Extended Schools Co-ordinators, Walsall College, all North Walsall Children's Area Partnerships, all North Walsall Schools
3. Opportunities at the University Technical College (UTC) in Sneyd	<b>a) Support the promotion of opportunities offered to parents and young people at the UTC</b>	<b>Donovan Bailey (Area Manager)</b> , Head Teachers, Extended Schools Co-ordinators, Walsall College, Walsall Adult Community College, Integrated Young People's Support Services



Workstream priority: **Removing the impact of scrap wagons**

Wards affected: Birchills Leamore  
Blakenall  
Bloxwich East  
Bloxwich West

Aims/objectives: Take legal action against unlawful scrap metal dealers

Local Issues	Actions (bold actions completed or ongoing)	Lead and Accountable Partners Involved
1. Negative impact of scrap metal merchants	<ul style="list-style-type: none"> <li>a) <b>Apply security products to metal to deter metal theft such as Smartwater</b></li> <li>b) Deploy CCTV to support operations in key areas</li> <li>c) <b>Communicate rules of compliance to merchants and the wider community</b></li> <li>d) <b>Communications campaign underway</b></li> <li>e) <b>Build a central database of scrap metal merchants with secure shared access by relevant agencies</b></li> <li>f) <b>Develop joint enforcement document that lists all possible legislation that can be used</b></li> <li>g) <b>Co-ordinate multi-agency days of action to warn and inform non-compliant merchants</b></li> <li>h) <b>Operation Steel active</b></li> <li>i) <b>Focus activity on Green Rock Lane, Stag Hill, Shakespeare Crescent, Hunters Crescent, Lower Farm, Ingram Road, Oakland Road, Ryle Street, Goscote Lane and Chestnut Road then roll-out across</b></li> </ul>	<p><b>Donovan Bailey (Area Manager)/Sergeant Carl Steventon (West Midlands Police),</b> Environmental Health, Pollution Control, Walsall Housing Group, Welfare Benefits, Highways, Jobcentre Plus, Environment Agency, West Midlands Fire Service</p>

	the borough	
2. Positive contribution made by responsible scrap metal merchants	<ul style="list-style-type: none"> <li>a) <b>Develop a dialogue with merchants through regular meetings</b></li> <li>b) <b>Develop a list of compliant scrap metal merchants</b></li> <li>c) <b>Work with merchants to develop the legitimate business of scrap metal collection and challenge them to remove the criminal element of the industry</b></li> </ul>	<b>Donovan Bailey (Area Manager)/Sergeant Carl Steventon (West Midlands Police),</b> Environmental Health, Pollution Control, Walsall Housing Group, Welfare Benefits, Highways, Jobcentre Plus, Environment Agency, West Midlands Fire Service
3. Support for residents intimidated by non-compliant merchants	<ul style="list-style-type: none"> <li>a) <b>Engage and communicate with residents who feel intimidated</b></li> <li>b) <b>Improve support for residents by increasing referrals to the authorities and enforcement activities</b></li> </ul>	<b>Donovan Bailey (Area Manager)/Sergeant Carl Steventon (West Midlands Police),</b> Environmental Health, Pollution Control, Walsall Housing Group, Welfare Benefits, Highways, Jobcentre Plus, Environment Agency, West Midlands Fire Service

Workstream priority: **Healthy lifestyles**

Wards affected: Birchills Leamore  
Blakenall  
Bloxwich East  
Bloxwich West

Aims/objectives: Raise the health aspirations of adults and children by motivating and embedding healthy habits

Local Issues	Actions (bold actions completed or ongoing)	Lead and Accountable Partners Involved
1. Awareness of healthy lifestyle actions	<ul style="list-style-type: none"> <li>a) <b>Deliver summer and Christmas awareness campaigns around health issues including diet, exercise, smoking, alcohol consumption, childhood obesity, men's health, infant mortality to demonstrate the link between health, age and lifestyle</b></li> <li>b) <b>Deliver Life Education Centres Project in schools</b></li> <li>c) <b>Hold awareness day at the Young Person's Information Centre</b></li> <li>d) <b>Hold awareness day at Stan Ball Centre</b></li> <li>e) <b>Deliver health conference at Walsall College</b></li> <li>f) <b>Co-ordinate and integrate partner activity, events and campaigns for greater impact</b></li> <li>g) <b>Use and evaluate 'scare and share' tactics in publicity campaigns</b></li> <li>h) <b>Determine the health inequalities in the area</b></li> <li>i) <b>Promote the benefits of having health checks</b></li> </ul>	<p><b>Nina Chauhan-Lall/Barbara Watt (NHS Walsall), Alan Jarvis (Community Health),</b> Sure Start Children's Centres, Public Safety, Community Development, Bloxwich Partnership, Walsall Housing Group, Beechdale Community Housing Association, Walsall College, schools, Extended Schools Co-ordinators, Social Care &amp; Inclusion, Integrated Young People's Support Services, Children's Area Partnerships, Greenspaces, Pollution Control, T3, Addaction, GPs, Sport and Leisure, Walsall Adult Community College, Green Spaces</p>

	j) Integrate With Walsall Adult Community College's Health and Well-being programme	
2. Availability of healthy food	<p>a) Develop targeted approaches to teaching families how to improve cost effective home cooking</p> <p>b) Assess and promote healthy cooking lessons in schools</p> <p><b>c) Map out fast food outlets (part of Childhood Obesity Needs Assessment work) and work with councillors and Planning to limit additional outlets particularly in vicinity of school gates</b></p> <p>d) Reduce availability of unhealthy food in schools, public service facilities and the wider community</p> <p><b>e) Work with local grocery stores to increase the availability of more good quality, affordable fresh fruit and vegetables in stores (Healthy Retailer scheme)</b></p> <p>f) Investigate and develop mobile shops</p> <p>g) Improve access to free healthy groceries for those on low income</p> <p>h) Integrate with Walsall Adult Community College's Incredible Edible programme</p>	<p><b>Nina Chauhan-Lal/Jo Hudson/Barbara Watt (NHS Walsall), Julie Hayward (Walsall Housing Group)</b>, Sure Start Children's Centres, Public Safety, Community Development, Bloxwich Partnership, Beechdale Community Housing Association, Walsall College, schools, Extended Schools Co-ordinators, Social Care &amp; Inclusion, Integrated Young People's Support Services, Greenspaces, Pollution Control, T3, Addaction, Regeneration, Planning, GPs, Walsall Adult Community College, District Centre Management</p>
3. Opportunities for exercise and physical activity	<p>a) Develop, promote and evaluate 'Get Active' programmes that aim to involve people in fun activities such as dance, Zumba, intergenerational ballroom dance, street-dancing, Nintendo Wii fun and swimming</p>	<p><b>Nina Chauhan-Lal/Jo Hudson (NHS Walsall), Alan Jarvis/Hannah Williams (Walsall Community Health)</b>, Sure Start Children's Centres, Public Safety, Community Development, Bloxwich</p>

	<ul style="list-style-type: none"> <li>b) Promote active travel to encourage Walking Buses with parents and children</li> <li><b>c) Co-ordinate and promote sports activities in suitable indoor and outdoor locations</b></li> <li>d) Develop competitive local teams and tournaments</li> <li><b>e) Map sport and leisure activities and work in partnership to provide more community facilities</b></li> <li>f) Promote 'Park and Stride' to encourage parents to park a little distance away from school then walk the remaining distance</li> <li><b>g) Deliver Time 2 Change project offering advice and support to adults regarding physical exercise</b></li> <li><b>h) Increase awareness within whole community of family-based weight management programmes and improve levels of recruitment</b></li> </ul>	<p>Partnership, Walsall Housing Group, Beechdale Community Housing Association, Walsall College, Extended Schools Co-ordinators, Social Care &amp; Inclusion, Integrated Young People's Support Services, Greenspaces, Pollution Control, T3, Addaction, GPs, Sport and Leisure, Walsall Adult Community College, Children's Area Partnerships</p>
<p>4. Childhood obesity</p>	<ul style="list-style-type: none"> <li>a) Support partnership work to contribute to Childhood Obesity Needs Assessment</li> <li>b) Partners to encourage active and healthy lifestyles through the provision of physical activity services and making the healthy diet option an easy option</li> <li>c) Incorporate Healthy Weight Strategy recommendations into the Area Plan</li> <li>d) Ensure that the impact on obesity is considered as a priority when making local decisions around other Area Plan priorities</li> <li><b>e) Targeted intervention, support and</b></li> </ul>	<p><b>Nina Chauhan-Lall/Jo Hudson/Barbara Watt (NHS Walsall), Alan Jarvis (Community Health)</b>, Sure Start Children's Centres, Public Safety, Community Development, Bloxwich Partnership, Walsall Housing Group, Beechdale Community Housing Association, Walsall College, Extended Schools Co-ordinators, Social Care &amp; Inclusion, Integrated Young People's Support Services, Greenspaces, Pollution Control, T3, Addaction, GPs, Sport and Leisure, Walsall Adult Community College,</p>

	<p><b>treatment for obese children aged under 11 years</b></p> <p>f) Support parents and carers with obese children</p> <p>g) Deliver Fun 4 Life weight management programme for young people</p> <p>h) Integrate with Walsall Adult Community College's Family Learning programme</p>	Planning
5. High level of smoking and Chronic Obstructive Pulmonary Disease (COPD)	<p>a) Promote quit smoking services targeting young people</p> <p>b) Target 'Fag Houses'</p> <p>c) Promote smoke-free homes particularly where there are new-borns and children</p> <p>d) Use and evaluate 'scare and share' tactics in publicity campaigns</p> <p>e) Targeted approach to warning expectant mothers about the dangers of smoking whilst pregnant</p> <p>f) Prevent smoking in ethnic niche markets</p> <p><b>g) Promote Expert Patient programmes for those with COPD and asthma</b></p> <p><b>h) Assess influenza and pneumococcal immunisation uptake and promote in North Walsall community if low</b></p> <p><b>i) Relocated sophisticated air quality monitoring equipment to check pollution levels near the M6 motorway</b></p>	<p><b>Nina Chauhan-Lall/Rabina Ayaz (NHS Walsall), Alan Jarvis (Walsall Community Health),</b> Sure Start Children's Centres, Public Safety, Community Development, Bloxwich Partnership, Walsall Housing Group, Beechdale Community Housing Association, Walsall College, Extended Schools Co-ordinators, Social Care &amp; Inclusion, Integrated Young People's Support Services, Greenspaces, Pollution Control, T3, Addaction, GPs, Walsall Adult Community College, Trading Standards, Highways</p>
6. Excessive alcohol consumption amongst young people and adults	<p>a) Examine the link between drinking and smoking cannabis</p> <p>b) Develop initiative to warn parents against</p>	<p><b>Nina Chauhan-Lall (NHS Walsall), Alan Jarvis (Walsall Community Health),</b> Sure Start Children's Centres, Public Safety,</p>

	<p>providing alcohol to their children</p> <p><b>c) Target shopkeepers who sell alcohol to young people whilst supporting those that fear the repercussions of not selling to them</b></p> <p><b>d) Promote referrals to health screening</b></p> <p>e) Implement multi-agency approach to targeting underage drinking hotspots</p> <p>f) Integrate with Walsall Adult Community College's drugs awareness programme</p>	<p>Community Development, Bloxwich Partnership, Walsall Housing Group, Beechdale Community Housing Association, Walsall College, Extended Schools Co-ordinators, Social Care &amp; Inclusion, Integrated Young People's Support Services, Children's Area Partnerships, Greenspaces, Pollution Control, T3, Addaction, GPs, Walsall Adult Community College, District Centre Management</p>
7. Poor participation in health programmes by men	<p><b>a) Focus on young men's health and the problems of cardiovascular disease in later life</b></p> <p><b>b) Deliver campaigns and initiatives to encourage more men aged 40-74 years to have health checks</b></p> <p>c) Deliver Fit 4 a Fiver to encourage male attendance at gyms</p> <p>d) Deliver Time 2 Change project offering advice and support to adults regarding physical exercise</p>	<p><b>Nina Chauhan-Lall (NHS Walsall), Connie Jennings (Walsall Housing Group)</b>, Sure Start Children's Centres, Public Safety, Community Development, Bloxwich Partnership, Beechdale Community Housing Association, Walsall College, Extended Schools Co-ordinators, Social Care &amp; Inclusion, Integrated Young People's Support Services, Children's Area Partnerships, Greenspaces, Pollution Control, T3, Addaction, GPs, Sport and Leisure</p>
8. Infant mortality	<p>a) Awareness and programmes aimed at maternal obesity, smoking, teenage pregnancy, housing and child poverty</p>	<p><b>Nina Chauhan-Lall (NHS Walsall)</b>, Sure Start Children's Centres, Public Safety, Community Development, Bloxwich Partnership, Walsall Housing Group, Beechdale Community Housing Association, Walsall College, Extended Schools Co-ordinators, Social Care &amp; Inclusion, Integrated Young People's Support</p>

		Services, Greenspaces, Pollution Control, T3, Addaction, GPs
9. Mental health issues	<p>a) <b>Support residents who have a mental health illness</b></p> <p>b) Integrate with Walsall Adult Community College's Community Learning programme</p>	<p><b>John Fell (Social Care &amp; Inclusion)</b>, NHS Walsall Mental Health, Sure Start Children's Centres, Public Safety, Community Development, Bloxwich Partnership, Walsall Housing Group, Beechdale Community Housing Association, Walsall College, Extended Schools Co-ordinators, Integrated Young People's Support Services, Greenspaces, Pollution Control, T3, Addaction, GPs, WPH Counselling, Sport and Leisure, Walsall Adult Community College</p>
10. Low prevalence of breastfeeding	<p>a) Promotion of Maternal and Early Years programme</p> <p>b) Promote home visits and telephone support for Breastfeeding Support Service particularly in Beechdale, Leamore, Mossley, Dudley Fields and North Blakenall</p>	<p><b>Rabina Ayaz (NHS Walsall Public Health)</b>, Walsall Community Health</p>
11. Low uptake of cervical screening	<p>a) Work with GP practices in Goscote area to promote uptake of cervical screening</p>	<p><b>Jo Wood/Liz Rochelle (NHS Walsall Public Health)</b></p>



Workstream priority: **Reducing teenage pregnancy**

Wards affected: Birchills Leamore  
Blakenall  
Bloxwich East  
Bloxwich West

Aims/objectives: Reduce the risk of teenagers becoming pregnant and increase knowledge and skills that support informed relationship choices

Local Issues	Actions (bold actions completed or ongoing)	Lead and Accountable Partners Involved
1. Awareness of teenage pregnancy issues	<ul style="list-style-type: none"> <li>a) <b>Deliver awareness campaign communicating issues associated with teenage pregnancy such as poverty, dropping out of school, postnatal depression, low weight babies, antenatal issues and infant mortality</b></li> <li>b) Promote awareness of the 'drink link' that excessive drinking that can lead to young people having unprotected sex</li> <li>c) <b>Identify support available to teenagers and their families</b></li> <li>d) <b>Deliver Young Mums Toy Library project</b></li> <li>e) Integrate with Walsall Adult Community College's Family Learning programme</li> </ul>	<p><b>Wendy Thompson (Integrated Young People's Support Services)</b>, NHS Walsall, Sure Start Children's Centres, Community Development, Bloxwich Partnership, Walsall Housing Group, Beechdale Community Housing Association, Walsall College, Extended Schools Co-ordinators, T3, Walsall Adult Community College</p>
2. Prevention and early intervention with young people	<ul style="list-style-type: none"> <li>a) Investigate patterns of activity that increase the chances of teenagers becoming pregnant</li> <li>b) Utilise early identification tools for those potentially at risk of becoming pregnant and focus multi-agency interventions on the</li> </ul>	<p><b>Wendy Thompson (Integrated Young People's Support Services)</b>, NHS Walsall, Sure Start Children's Centres, Community Development, Bloxwich Partnership, Walsall Housing Group, Beechdale Community Housing Association, Walsall College,</p>

	variety of issues identified c) Develop parent and family support to raise aspirations and expectations d) Integrate with Walsall Adult Community College's Family Learning programme	Extended Schools Co-ordinators, T3, Walsall Adult Community College
--	---	---

## AREA COMMUNITY PLAN ACTIONS – WALSALL SOUTH

Workstream priority: **Tackling crime and anti-social behaviour**

Wards affected: St Matthew's  
Palfrey  
Paddock  
Pleck

Aims/objectives: Reduce crime and anti-social behaviour with support from the local community.

Local Issues	Actions (bold actions completed or ongoing)	Lead and Accountable Partners Involved
1. Youth anti-social behaviour around town centre and Walsall South area	<ul style="list-style-type: none"> <li>a) <b>Provide positive activities for young people</b></li> <li>b) <b>Detached youth workers working in Walsall Town Centre every Saturday</b></li> <li>c) <b>Police and PCSO's sign post young people to engage in positive activities with youth workers</b></li> <li>d) <b>Walsall Art Gallery have offered the opportunity to utilise their Art Gallery for activities when available</b></li> <li>e) Utilise specialist services as appropriate for targeted delivery</li> <li>f) My Place activity planned for March 2012</li> </ul>	<b>Georgie Abbott (Integrated Young Peoples Support Services), Sergeant Martin Russell (West Midlands Police),</b> Walsall Art Gallery, Walsall Housing Group, Caldmore Housing, Integrated Young People's Support Services, Town Centre Management, Anti-Social Behaviour Unit, Sport and Leisure, Walsall Adult Community College, Crime Reduction Initiatives, T3
2. Provision of youth café	<ul style="list-style-type: none"> <li>a) <b>Designed and implemented feasibility study to determine the potential location and services of a café for young people – activities now being monitored</b></li> </ul>	<b>Georgie Abbott (Integrated Young People's Support Services),</b> Town Centre Management, West Midlands Police

	<ul style="list-style-type: none"> <li>b) Increase access to services and remove anti-social behaviour</li> <li>c) <b>Consultation completed with young people showed that more than half wanted to try youth provision in café</b></li> <li>d) <b>Two café sessions delivered in town centre with six more planned within the year</b></li> </ul>	
3. Vandalism and theft from void properties	<ul style="list-style-type: none"> <li>a) <b>Use of Smartwater as a deterrent to theft</b></li> <li>b) <b>Promote awareness programme ‘Eyes and Ears’, Crimestoppers and reward scheme</b></li> <li>c) <b>Deliver confidential, covert operations, including Operation Intrusive</b></li> </ul>	<b>Inspector Simon Rowbotham (West Midlands Police)</b> , Walsall Housing Group, Estates, Town Centre Management
4. Community involvement in crime reduction initiatives	<ul style="list-style-type: none"> <li>a) <b>Support the work of Neighbourhood Watch schemes</b></li> <li>b) <b>Created the Neighbourhood Watch chairs forum</b></li> <li>c) <b>Implement Street Watch by setting up Alumwell and Pleck Street Watch</b></li> <li>d) <b>Establishment of Town Centre Champions Group to engage local businesses to tackle issues including crime</b></li> </ul>	<b>Inspector Simon Rowbotham (West Midlands Police)</b> , Anti-Social Behaviour Unit, Walsall Housing Group, Integrated Young People’s Support Services, West Midlands Fire Service, Reassurance Team, Neighbourhood Watch, Town Centre Management
5. Illegal alcohol and cigarettes dealing and abuse	<ul style="list-style-type: none"> <li>a) Identify hotspots for alcohol abuse</li> <li>b) Target shopkeepers selling alcohol to underage young people</li> <li>c) <b>Undertake underage alcohol test purchases</b></li> </ul>	<b>Inspector Simon Rowbotham (West Midlands Police)</b> , NHS Walsall, Walsall Housing Group, Hi’s ‘n’ Lows, Walsall College, Integrated Young People’s Support Services, Town Centre Management, Anti-

	<ul style="list-style-type: none"> <li>d) Implement street patrols to identify underage drinkers</li> <li>e) Integrate with Walsall Adult Community College's drugs awareness programme</li> <li>f) Establish clear referral pathways into specialist young people's drug and alcohol treatment services</li> </ul>	Social Behaviour Unit, Reassurance Team, Walsall Adult Community College, Crime Reduction Initiatives, T3, Lantern House, Addaction
6. Eliminate short-term hotspots of anti-social behaviour	<ul style="list-style-type: none"> <li><b>a) Apache CCTV continues to be deployed in areas of greatest need</b></li> <li><b>b) CCTV deployed at Park Hall shops to stop anti-social behaviour</b></li> <li><b>c) CCTV deployed at Darlaston Road to stop anti-social behaviour</b></li> <li><b>d) Link with Operation Intrusive and Next Steps</b></li> <li>e) Improve CCTV at high rise blocks on the Orlando Estate with controlled monitoring for Orlando House, Barleyfields House and Newhall House</li> </ul>	<b>Inspector Simon Rowbotham (West Midlands Police)</b> , Anti-Social Behaviour Unit, Walsall Housing Group, Caldmore Housing, Estates, Town Centre Management
7. Reduce parking problems and anti-social behaviour in the open space around Austin House	<ul style="list-style-type: none"> <li>a) Redesign the parking area to ensure that residents' parking is protected</li> <li>b) Charge the public for parking in the area on roadside parking bays</li> <li>c) Create garden space for residents to maintain</li> </ul>	<b>Alison Haywood (Walsall Housing Group)</b>

Workstream priority: **Creating cleaner and tidier neighbourhoods**

Wards affected: St Matthew's  
Palfrey  
Paddock  
Pleck

Aims/objectives: Improve the appearance of the area and tackle environmental issues.

Local Issues	Actions (bold actions completed or ongoing)	Lead and Accountable Partners Involved
1. Appearance of area	<p><b>a) Three year plan developed for Cladmore area to create positive attitudes and actions of residents and workers to significantly improve the appearance of the area</b></p> <p>b) Deliver 'Don't drop it - Bin it' campaign with a focus on young people at schools</p> <p>c) Ensure bins are appropriately located</p> <p>d) Implement Street Watch</p> <p>e) Integrate with Walsall Adult Community College's environment sustainability programme</p> <p><b>f) Establishment of Town Centre Champions Group to engage local businesses to address the appearance of the area</b></p>	<p><b>Will Loescher (Caldmore Village Festival), Councillor Arif</b>, Caldmore Festival Committee, Caldmore Housing, Street Pride, Walsall Housing Group, Reassurance Team, Walsall Adult Community College, Town Centre Management</p>
2. Level and frequency of flytipping	<p><b>a) Identify and clean up regularly flytipped sites and improve management and deterrent measures</b></p> <p><b>b) Implement prevention measures such as gates, barriers and improved visibility for</b></p>	<p><b>Caulie Grant (Street Pride)</b>, Environmental Health, Greenspaces, Caldmore Housing, Walsall Housing Group, Town Centre Management</p>

	flytipped sites	
3. Community engagement in clean-up activities and positive promotion of area	<p>a) <b>Deliver community tidy-up events – three delivered and one planned</b></p> <p>b) <b>Caldmore Tidy Group established as a pilot to enable the workstream to be rolled out across Walsall South</b></p> <p>c) <b>Launch of Caldmore Village Festival in January 2010, Sport Mela and Festival delivered in May 2011</b></p> <p>d) Chuckery Festival planned for July 2011</p> <p>e) Greater involvement of voluntary and community sector to lead on social responsibility of clean-up activities</p> <p>f) Engagement in Heart of England in Bloom</p>	<b>Will Loescher (Caldmore Festival), Councillor Arif</b> , Caldmore Festival Committee members, Caldmore Housing, Street Pride, Walsall Housing Group, Reassurance Team, Chuckery Primary School, Town Centre Management
4. Re-establish Street Champion programme	<p>a) Establish volunteer groups</p> <p>b) Undertake community clean-ups</p> <p>c) Street Champions identified</p> <p>d) Link with Street Watch scheme</p>	<b>Denise Perry (Area Manager)</b> , Street Champions, Street Pride, Greenspaces, local councillors, West Midlands Police, Environmental Health, Safer Walsall Partnership, Neighbourhood Watch, Public Safety
5. Environmental and social quality of open spaces	<p>a) Deliver improvements to Walsall Arboretum, Palfrey Park and Pleck Park</p> <p>b) Integrate with Walsall Adult Community College's horticulture programme</p>	<b>Steve Talbot (Greenspaces)</b> , Friends of Parks, Integrated Young People's Support Services, Walsall College, Walsall Adult Community College
6. Use of open spaces	<p>a) Consult to identify best use of open space</p> <p>b) <b>Palfrey Park consultation undertaken in May 2011</b></p> <p>c) Work with communities to develop creative</p>	<b>Steve Talbot (Greenspaces)</b> , NHS Walsall, West Midlands Police, Friends of Parks, Public Safety, Integrated Young Peoples Support Services, Walsall College, Walsall

	ideas of use d) Integrate with Walsall Adult Community College's Incredible Edible programme	Adult Community College
--	---	-------------------------



Workstream priority: **Healthy lifestyles**

Wards affected: St Matthew's  
Palfrey  
Paddock  
Pleck

Aims/objectives: Tackling health issues of concern in the area

Local Issues	Actions (bold actions completed or ongoing)	Lead and Accountable Partners Involved
1. Awareness of healthy lifestyle actions	<ul style="list-style-type: none"> <li>a) <b>Develop awareness campaigns around health issues including diet, exercise, smoking, alcohol consumption and childhood obesity to demonstrate the link between health, age and lifestyle</b></li> <li>b) Identify specific Health Profiles that map local health issues on a local neighbourhood basis to guide awareness campaigns</li> <li>c) <b>Co-ordinate and integrate partner activity, events and campaigns for greater impact</b></li> <li>d) <b>Promote the benefits of having health checks</b></li> <li>e) <b>Sports Mela led by Caldmore Village Festival at Walsall Rugby Club in May 2011</b></li> <li>f) Integrate with Walsall College's 'Be Healthy' Week</li> <li>g) Provide promotional materials in terms of healthy lifestyle programmes aimed at adults and young people</li> <li>h) Integrate with Walsall Adult Community College's Family Learning programme</li> </ul>	<p><b>Lesley Dews/Andy Hood/Barbara Watt/Susie Gill (NHS Walsall Public Health)</b>, Sure Start Children's Centres, Public Safety, Community Development, Walsall Housing Group, Caldmore Housing, Walsall College, Extended Schools Co-ordinators, Social Care &amp; Inclusion, Integrated Young People's Support Services, Greenspaces, Pollution Control, Sport and Leisure, Walsall Adult Community College, Drug &amp; Alcohol Action Team, Crime Reduction Initiatives, T3, Town Centre Management</p>

	<ul style="list-style-type: none"> <li>i) Joint working with health professionals and pollution control experts to protect users of local playing fields and safely maximise their use by the local community</li> </ul>	
2. Prevention and better management of long-term conditions	<ul style="list-style-type: none"> <li>a) Increase awareness of Health Trainer service and health promotion events (whole family)</li> <li>b) Promote NHS health check service via GPs and community venues to identify conditions earlier</li> <li>c) Promote Expert Patient programmes for those with a long term condition especially diabetes, COPD and heart disease</li> </ul>	<b>Nina Chauhan-Lall/Louise Mabley/Nicola Humphrey (NHS Walsall Public Health)</b> , Walsall Housing Group, Regeneration, Health Trainer Service, Leisure Services, Sure Start Children's Centres
3. Excessive alcohol consumption amongst young people and adults	<ul style="list-style-type: none"> <li>a) Develop initiative to warn parents against providing alcohol to their children</li> <li><b>b) Target shopkeepers who sell alcohol to young people</b></li> <li>c) Promote referrals to health screening</li> <li>d) Integrate with Walsall College's 'Be Healthy' Week</li> <li>e) Integrate with Walsall Adult Community College's drugs awareness programme</li> <li>f) Establish clear referral pathways into specialist young people's drug and alcohol treatment services</li> <li>g) Referral of vulnerable groups to Targeted Youth Support panel</li> </ul>	<b>Susie Gill (NHS Walsall), Patrick Duffy (NHS Walsall)</b> , Sure Start Children's Centres, Public Safety, Community Development, Walsall Housing Group, Caldmore Housing, Extended Schools Coordinators, Social Care & Inclusion, Integrated Young People's Support Services, Walsall College, Walsall Adult Community College
4. Health issues with children and young people	<b>a) Engage with all 17 primary schools to support healthy weight initiatives starting</b>	<b>Susie Gill/Jo Hudson (NHS Walsall Public Health), Alan Jarvis (NHS Community</b>

	<p>with the Be Healthy initiative</p> <p><b>b) Pilot of Wii Fit project at Chuckery Primary School to establish benefits for Walsall South Primary School pupils</b></p> <p><b>c) Fun4Life programme delivered between November 2010 and February 2011 providing weight management sessions for children</b></p> <p><b>d) Targeted intervention, support and treatment to improve healthy weight outcomes</b></p> <p>e) Support parents and carers with obese children</p> <p><b>f) Support partnership work to contribute to Childhood Healthy Weight Needs Assessment including baseline survey of current provision of healthy food outlets</b></p> <p><b>g) Implement 'Food Dudes' programme at primary schools with high obesity levels</b></p> <p>h) Increase awareness within whole community of family based weight management services (Fun4Life/Make it Count) and increase number of referrals</p> <p>i) Incorporate Healthy Weight Strategy recommendations into Area Plan</p> <p>j) Partners to encourage active and healthy lifestyles by looking at provision of physical activity services and by making a healthy diet easier</p> <p>k) Ensure that the impact on obesity is considered as a priority when making local decisions around other Area Plan priorities</p>	<p><b>Health), Joe Holding, (Sports and Leisure), Alumwell/Pleck Children's Area Partnership, Palfrey Children's Area Partnership, Chuckery/Paddock Children's Area Partnership, all Walsall South Infant, Junior and Primary schools, Walsall College, Sport and Leisure, Walsall Adult Community College</b></p>
--	--	--

	<p>such as environment, traffic and parking and anti-social behaviour</p> <p>l) Engage Walsall Active Youth to deliver prevention programmes to young people at risk of being overweight</p> <p>m) Integrate with Walsall Adult Community College's Family Learning programme</p>	
5. Infant mortality	<p>a) Map out provision of all services and uptake within this area</p> <p>b) Raise awareness of maternal and early years service and increase referrals from pregnant women who have BMI above 30</p> <p>c) Increase support and uptake to the smoking in pregnancy service</p> <p>d) Increase referrals to genetic counselling service</p>	<p><b>Rabina Ayaz/Rachel Andrews/Lyn Gostling (NHS Walsall Public Health), Fran Fahy/Karen Goldsmith (Smoking Cessation Services)</b>, Healthy Child Programme, Walsall Community Health, Manor Hospital</p>
6. Smoking and Chronic Obstructive Pulmonary Disease (COPD)	<p>a) Address smoking levels (particularly in the Bangladeshi community) by increasing referrals to smoking cessation services</p> <p>b) Promote healthy houses initiatives</p> <p>c) Check accessibility of respiratory services to ensure they are fit for purpose from a service user's perspective</p>	<p><b>Nicola Humphrey (NHS Walsall Public Health), Fran Fahy/Karen Goldsmith (Smoking Cessation Services)</b>, NHS Community Health</p>
7. Chlamydia reduction	<p>a) Ensure area has appropriate access to screening, promoting where tests can be obtained</p> <p>b) Target Chuckery and Palfrey communities due to incidence rates</p> <p>c) Increase participation in screening and</p>	<p><b>Barbara Watt/Jo Wood/Heidi Mitchell (NHS Walsall Public Health)</b> Integrated Young People's Support Services, GPs, Walsall Housing Group, NOW steering group, colleges and schools</p>

	promote sexual health through youth and educational settings d) Increase signposting of services	
--	---	--

Workstream priority: **Remove sex workers and drug dealers**

Wards affected: St Matthew's  
Palfrey  
Pleck

Aims/objectives: Bring together the key delivery partners and resident representation to remove the impact of sex workers and drug dealers

Local Issues	Actions (bold actions completed or ongoing)	Lead and Accountable Partners Involved
1. Sex workers	<ul style="list-style-type: none"> <li>a) <b>Delivered outreach project in Caldmore, Palfrey and Pleck, completed in March 2011 and report presented to 'Remove the Impact' group</b></li> <li>b) <b>Referrals of sex workers made to Hi's 'n' Lows drop-in and alternative activities</b></li> <li>c) <b>Referrals of sex workers made to agencies including Jobcentre Plus and colleges for training courses on money advice and debt management</b></li> <li>d) <b>Referrals of sex workers made to GPs, dentists and treatment agencies</b></li> <li>e) Remove sex workers from residential areas</li> <li>f) Restrict access to Hough Road by palisade fencing and gating at Gower Street with access agreements in place</li> <li>g) Remove condoms and flytipping quickly</li> </ul>	<p><b>Councillor Arif, Hi's 'n' Lows</b>, West Midlands Police, NHS Walsall, Caldmore Housing, Walsall Housing Group, Pleck Neighbourhood Watch, Safe Project, local councillors, Community Safety, Walsall Adult Community College</p>
2. Illegal drug dealing	<ul style="list-style-type: none"> <li>a) Identify hotspots for drug taking</li> <li>b) <b>Promote the dangers of substance misuse</b></li> <li>c) Support family intervention groups</li> </ul>	<p><b>Inspector Simon Rowbotham (West Midlands Police), Annette Harpin (Walsall Housing Group)</b>, NHS Walsall, Walsall Housing Group, Hi's 'n' Lows, Integrated</p>

	<b>d) Promote needle exchange schemes</b> <b>e) Remove drug paraphernalia</b> <b>f) CCTV deployed in Barleyfields House, Orlando House and Newhall House</b>	Young People's Support Services, Addaction, Walsall Adult Community College, Town Centre Management, Caldmore Housing
--	--	--

Workstream priority: **Improving educational achievement**

Wards affected: St Matthew's  
Palfrey  
Paddock  
Pleck

Aims/objectives: Support schools, parents and children to raise academic standards

<b>Local Issues</b>	<b>Actions (bold actions completed or ongoing)</b>	<b>Lead and Accountable Partners Involved</b>
1. Improve aspiration levels and attitudes	a) Work with young people and their families with a view to raising aspirations and changing attitudes b) Offer reading and writing courses for parents c) Increase mentoring and provision of role models d) Support young people with issues that impact negatively on their achievement, such as motivation or bullying e) Alternative curriculum delivered through positive activities <b>f) My Place project delivered in March 2012</b>	<b>Sue Wedgwood (SERCO)</b> , Head Teachers, Extended Schools Co-ordinators, Walsall College, Councillor McCracken, Alumwell/Pleck Children's Area Partnership, Palfrey Children's Area Partnership, Chuckery/Paddock Children's Area Partnership, all Walsall South schools, Walsall Adult Community College, Integrated Young People's Support Services
2. Different attainment levels across different ethnic groups	<b>a) Establish ethnic minority attainment planning group and develop action plan to support schools</b> b) Ethnic Minority Attainment Summit planned	<b>Sue Wedgwood (SERCO)</b> , Head Teachers, Extended Schools Co-ordinators, Councillor Arif, Alumwell/Pleck Children's Area Partnership, Palfrey Children's Area Partnership, Chuckery/Paddock Children's Area Partnership, all Walsall South schools, Walsall Adult Community College
3. Before/after school care for	a) Identify before/after school care	<b>Extended Schools Services, SERCO,</b>



children and families	<p>requirements</p> <p>b) Identify shortfall in provision</p> <p>c) Arrange appropriate provision</p>	Children's Services, local councillors, Walsall Adult Community College
4. Identify and improve different attainment levels across area	<p>a) Identify groups that are underachieving</p> <p>b) Develop creative approaches to raising the level of achievement of target groups</p> <p>c) Integrate with Walsall Adult Community College's Family Learning programme</p> <p>d) Referral of vulnerable groups to Targeted Youth Support panel</p>	<p><b>Sue Wedgwood (SERCO)</b>, Area Manager, Joseph Leckie School, Children's Services, Councillor Arif, Councillor McCracken, Alumwell/Pleck Children's Area Partnership, Palfrey Children's Area Partnership, Chuckery/Paddock Children's Area Partnership, all Walsall South schools, Walsall College, Walsall Adult Community College, Integrated Young People's Support Services</p>

Workstream priority: **Improving roads maintenance and traffic flow**

Wards affected: St Matthew's  
Palfrey  
Paddock  
Pleck

Aims/objectives: Bring about improvements to road and pavement maintenance and improve traffic flow

Local Issues	Actions ( <b>bold actions completed or ongoing</b> )	Lead and Accountable Partners Involved
1. Road maintenance	a) Prioritise concerns into improvement programme <b>b) Action plan developed to identify and address parking matters that impact on traffic flow in and around Milton Street</b> c) Highways maintenance planned for Bradford Place, Bridgman Street, Brook Street, Frederick Street, George Street, Henry Street, Long Street, Lower Hall Lane, Queen Street, Reservoir Close, Reservoir Street, Short Street, Upper Brook Street, Upper Hall Lane, Victoria Street and Clement Street	<b>Marion Parry (Roadworks Management)</b> , Transportation
2. Condition of footpaths	a) Undertake walks programme to identify potential maintenance issues b) Proactively identify potential for falls on footpaths	<b>Linda Lister (Walsall Housing Group)</b> , <b>Vicky Oakley (NHS Walsall)</b> , West Midlands Police, local councillors, Street Pride, Highways, Centro
3. Traffic flow	a) Bring together the key delivery partners and resident representation to identify main concerns of traffic flow b) Engage partners to deliver enforcement	<b>Mark Corbin (Traffic Management)</b> , local councillors, Regeneration, Highways, Parking Services, Walsall South's Neighbourhood Watch Chairs Group

	activities	
4. Improvements to bus stops and bus routes	a) Liaise with local bus users to identify improvements	<b>Fiona Ward (Centro)</b> , Highways, local councillors

## AREA COMMUNITY PLAN ACTIONS – DARLASTON AND BENTLEY

Workstream priority: **Tackling anti-social behaviour and crime**

Wards affected: Bentley and Darlaston North  
Darlaston South

Aims/objectives: Reduce the incidents of crime and anti-social behaviour

Local Issues	Actions (bold actions completed or ongoing)	Lead and Accountable Partners Involved
<p>1. Nuisance and anti-social behaviour at Castleview Close, Moxley</p>	<p><b>a) Eliminate inconsiderate driving and noise from vehicles</b>  <b>b) Stop minor graffiti and vandalism</b>  <b>c) Improve security and gating</b>  <b>d) Integrated Young Peoples Support Services detached workers deployed in area to engage with young people</b>  <b>e) West Midlands Police Cyber Bus deployed to engage with young people</b>  <b>f) Local residents have been consulted on local plans to improve fencing and gating in the area</b>  <b>g) Additional activities for young people provided through Moxley People's Centre</b>  <b>h) Move Truck and Reach Up facility deployed to engage with young people</b></p>	<p><b>Karen Bateman (Safer Walsall Partnership)</b>, local councillors, Street Pride, West Midlands Police, Anti-Social Behaviour Unit, Reassurance Team, Walsall Housing Group, Integrated Young People's Support Services, Moxley People's Centre</p>
<p>2. Nuisance and anti-social behaviour at Consort Drive, Darlaston</p>	<p><b>a) Consultation with local residents to identify improvements to security</b>  <b>b) Eliminate nuisance from young people</b></p>	<p><b>Steve Talbot (Greenspaces)</b>, local councillors, Walsall Housing Group, West Midlands Police, British Waterways, Anti-</p>

	<p><b>and adults around vandalism and noise</b></p> <p>c) Remove impact of off-road cycles along canal towpath</p> <p><b>d) Additional fencing to adjoining canal towpath installed</b></p>	Social Behaviour Unit, Reassurance Team
3. Nuisance and anti-social behaviour at George Rose Park, Darlaston	<p>a) <b>Eliminate nuisance from young people and adults relating to vandalism and some substance misuse</b></p> <p>b) <b>Remove impact of off-road cycles through increased arrests</b></p> <p>c) <b>Remove problems of illegal access</b></p> <p>d) <b>Provision of community shelter to divert asb</b></p>	<b>Nigel Patterson (Integrated Young People's Support Services)</b> , local councillors, Greenspaces, West Midlands Police, West Midlands Fire Service, Friends Group, Grace Academy, Anti-Social Behaviour Unit
4. Large-scale flytipping at Harrowby Road, Moxley	<p>a) <b>Eliminate levels of vandalism and flytipping</b></p> <p>b) <b>Clear area of existing rubbish</b></p> <p>c) <b>Secure area more effectively to restrict certain vehicles</b></p>	<b>Caulie Grant (Street Pride)</b> , local councillors, West Midlands Fire Service, Environmental Health, Regeneration, Engineering & Transportation, Walsall Housing Group, Estates
5. Void building vandalism and anti-social behaviour at Heathfield Lane West, Darlaston	<p>a) <b>Empty property and grounds now secure</b></p> <p>b) Identify opportunities to work with owners to re-let property</p> <p>c) <b>Additional security provided to access way to pool</b></p> <p>d) <b>Local fishing club have management responsibility of pool and surrounding land</b></p>	<b>Mark Skidmore (Building Control)</b> , local councillors, Greenspaces, Street Pride, Birmingham and Black Country Wildlife Trust, West Midlands Police, Heathfield Lane West Fishing Club
6. Nuisance and anti-social behaviour at Kings Hill Park,	a) <b>Integrated Young Peoples Support Services detached workers deployed in</b>	<b>Clive Morris (Greenspaces)</b> , local councillors, West Midlands Police, Street

Darlaston	<b>area to engage with young people</b> <b>b) Consultation undertaken with local residents to identify priority improvements to park infrastructure</b>	Pride, Integrated Young People's Support Services, Anti-Social Behaviour Unit, Accord Housing, Friends Group
7. Nuisance, anti-social behaviour and flytipping at Linear Walkway, Bentley	a) Improve security and access to area <b>b) Improve signage and consultation informing around enforcement</b> <b>c) Tidy and continue maintenance of area</b>	<b>Keiron Tuckley (Street Pride)</b> , West Midlands Police, Greenspaces, Anti-Social Behaviour Unit, Reassurance Team, Old Hall Peoples Partnership
8. Nuisance and anti-social behaviour at Moorcroft Wood, Moxley	<b>a) Eliminate nuisance from young people and adults relating to vandalism, intimidation and substance misuse</b> <b>b) Remove impact of off-road cycles</b> <b>c) Stop secondary fires</b> <b>d) Improved fencing to wood adjacent to canal towpath installed</b>	<b>Julia Morris (Wildlife Trust)</b> , local councillors, Greenspaces, Friends Group, Integrated Young People's Support Services, Probation Services, West Midlands Police, Reassurance Team, West Midlands Fire Service, Anti-Social Behaviour Unit
9. Nuisance and anti-social behaviour adjacent to former Railway Tavern sites, Darlaston	<b>a) Former Railway Tavern site cleared of all flytipped rubbish and building demolished</b> <b>b) Remove impact of vehicles leaving mud and debris on local highway</b> <b>c) Eliminate negative impact of nuisance and dust to adjacent cemetery</b>	<b>Norman Hickman (Planning &amp; Building Control)</b> , local councillors, Engineering & Transportation, Public Health, Environment Agency, Pollution Control, Safer Walsall Partnership, West Midlands Police, Bereavement Services, Street Pride
10. Nuisance and anti-social behaviour at Queen Elizabeth Avenue shops, Bentley	<b>a) Access road to rear of shops is now gated</b> <b>b) Walsall Housing Group have provided access road keys to all local residents</b> <b>c) All shop owners have been written to outlining their responsibilities in line with their lease</b>	<b>Nicola Webb (Walsall Housing Group)</b> , local councillors, Regeneration, Estates, Environmental Health, Reassurance Team, West Midlands Police

11. Nuisance and anti-social behaviour at Victoria Mews Park, Darlaston	<ul style="list-style-type: none"> <li>a) <b>Stop nuisance behaviour from young people and adults relating to noise, vandalism and some substance misuse</b></li> <li>b) <b>Stop secondary fires</b></li> <li>c) <b>Consult with local residents as to the future use of the play area</b></li> </ul>	<b>Daniel Gallagher (Greenspaces)</b> , local councillors, Street Pride, Anti-Social Behaviour Unit, Reassurance Team, West Midlands Police, Integrated Young People's Support Services, West Midlands Fire Service, District Centre Management
12. Nuisance and anti-social behaviour around Victoria Park and Darlaston Football Club	<ul style="list-style-type: none"> <li>a) <b>Victoria Park play area is now locked during evening and night hours</b></li> <li>b) <b>Shrubs and bushes have been cut back around park area</b></li> <li>c) <b>Eliminate nuisance to local residents caused around Darlaston Football Club</b></li> </ul>	<b>Claire Gwynne (Anti-Social Behaviour Unit)</b> , Street Pride, Greenspaces, Reassurance Team, West Midlands Police, Environmental Health, Darlaston Football Club, Estates
13. Nuisance and anti-social behaviour at Whitton Street, Darlaston	<ul style="list-style-type: none"> <li>a) <b>Community Payback have carried out a clean-up of the local area</b></li> <li>b) <b>Salisbury Street Primary School has completed a clean-up with local children and residents</b></li> <li>c) <b>Police and Integrated Young People's Support Services detached workers have engaged with young people in the area</b></li> </ul>	<b>Ravi Pannu (Reassurance Team)</b> , local councillors, Safer Walsall Partnership, West Midlands Police, Integrated Young People's Support Services, Salisbury Street Primary School, Probation Services
14. Eliminate short-term hotspots of anti-social behaviour	<ul style="list-style-type: none"> <li>a) <b>Deployment of overt surveillance camera where appropriate</b></li> <li>b) Provision of high quality street lighting to discourage anti-social behaviour and crime</li> </ul>	<b>Inspector Kerr Ross (West Midlands Police)</b> , local councillors, Anti-Social Behaviour Unit, District Centre Management, Highways
15. Crime suffered by local businesses	<ul style="list-style-type: none"> <li>a) Implement a Smartwater business watch programme</li> </ul>	<b>Diane Mansell (District Centre Management)</b> , West Midlands Police
16. Crime suffered by local	<ul style="list-style-type: none"> <li>a) <b>Distribute Smartwater to most vulnerable</b></li> </ul>	<b>Sgt Jackie Nicholson (West Midlands</b>

residents	<b>households and neighbourhoods</b>	<b>Police),</b> Walsall Housing Group, Accord Housing
-----------	--------------------------------------	---



Workstream priority: **Reduce health inequalities**

Wards affected: Bentley and Darlaston North  
Darlaston South

Aims/objectives: Tackle issues of health inequality through increased promotion and partner activity

<b>Local Issues</b>	<b>Actions (bold actions completed or ongoing)</b>	<b>Lead and Accountable Partners Involved</b>
1. Awareness of healthy lifestyle actions	<ul style="list-style-type: none"> <li>a) <b>Identify specific Health Profiles that map local health issues on a local neighbourhood basis to guide awareness campaigns</b></li> <li>b) <b>Discuss local health issues at themed Area Community meeting to highlight priorities</b></li> <li>c) Integrate with Walsall College's 'Be Healthy' Week</li> <li>d) Increase awareness of Health Trainer Service and health promotion events for the whole family</li> <li>e) Promote healthy activities at leisure centres and Sure Start Children's Centres</li> <li>f) Promote NHS health checks to identify potential health conditions earlier</li> <li>g) Promote Expert Patient programmes for those with a long-term health condition</li> </ul>	<p><b>Lesley Dews/Barbara Watt/Nina Chauhan-Lall (NHS Walsall Public Health), Alan Jarvis (Community Health)</b>, Jhoots Pharmacy, Walsall College, Walsall Adult Community College, Sure Start Children's Centres, Walsall Housing Group, Extended Schools Co-ordinators, Bentley Children's Area Partnership, Darlaston Children's Area Partnership, GPs, Pollution Control, Regeneration, Expert Patient Programme, Sport and Leisure, Health Trainer Service</p>
2. Breast screening uptake	<ul style="list-style-type: none"> <li>a) <b>Increase support to the Breast Screening uptake programme across the area</b></li> <li>b) <b>Identify local community venues to provide a local service</b></li> </ul>	<p><b>Liz Rochelle (NHS Walsall Public Health)</b>, Community Development, Walsall Housing Group, NOW steering group</p>

	c) Breast screening planned for August 2011 to October 2011 at Darlaston Health Centre to raise awareness in women aged 50 to 70 years	
3. Increase awareness and uptake of bowel and cervical cancer screening	<ul style="list-style-type: none"> <li>a) Work with partners to increase awareness of local programmes</li> <li>b) Explore innovative ways of increasing uptake</li> <li>c) Improve communication mechanisms for information to target age groups</li> </ul>	<b>Jo Wood/Liz Rochelle</b> (NHS Walsall Public Health), local councillors, Integrated Young People's Support Services, Social Care & Inclusion
4. Obesity	<ul style="list-style-type: none"> <li>a) <b>Support partnership work to contribute to Childhood Obesity Needs Assessment</b></li> <li>b) Map fast food outlets and work with councillors and Planning to limit additional outlets particularly in vicinity of school gates</li> <li>c) <b>Work with local grocery stores to increase the availability of more good quality, affordable fresh fruit and vegetables in stores (Healthy Retailer Scheme)</b></li> <li>d) Increase awareness within whole community of family-based weight management services and increase number of referrals</li> <li>e) Implement 'Proactive phone calls' pilot with local GPs to increase referrals into Fun4Life programme</li> <li>f) Ensure services provided in locality follow National Childhood Measurement Programme (NCMP) team activity in area</li> <li>g) Incorporate Healthy Weight Strategy recommendations into Area Plan</li> </ul>	<b>Jo Hudson/Barbara Watt/Liz Rochelle</b> (NHS Walsall Public Health), Planning, Transport, Sure Start Children's Centres, Walsall Housing Group, Green Spaces, Extended Schools Co-ordinators

	<ul style="list-style-type: none"> <li>h) Partners to encourage active and healthy lifestyles by looking at provision of physical activity services and provision of making the healthy diet option an easy option</li> <li>i) Ensure that the impact on obesity is considered as a priority when making local decisions around other Area Plan priorities</li> </ul>	
5. Teenage pregnancy	<b>a) Sexual health and contraception awareness and accessibility to be promoted through schools, youth venues, GPs, sexual health services outreach and leisure facilities</b>	<b>Liz Rochelle (NHS Walsall Public Health)</b> , Walsall Integrated Sexual Health Services (WISH), Integrated Young People's Support Services, SERCO, Walsall College, Extended Schools Co-ordinators
6. Chlamydia screening	<ul style="list-style-type: none"> <li>a) Ensure area has appropriate access to screening, mapping out where tests can be obtained</li> <li>b) Increase awareness and use of Hatherton young people's sexual health outreach service in Darlaston</li> <li>c) Increase participation in screening and promote sexual health through youth and educational settings</li> <li>d) Improve signposting of services</li> </ul>	<b>Barbara Watt/Jo Wood/Heidi Mitchell (NHS Walsall Public Health)</b> , Integrated Young People's Support Services, GPs, Walsall Housing Group, NOW steering group, Walsall College
7. Smoking and Chronic Obstructive Pulmonary Disease (COPD)	<ul style="list-style-type: none"> <li>a) Address smoking levels by increasing referrals to smoking cessation services</li> <li>b) Promote Healthy Houses initiatives</li> <li>c) Check accessibility of respiratory services to ensure they are fit for purpose from a service user's perspective</li> </ul>	<b>Nicola Humphrey (NHS Walsall Public Health), Fran Fahy/Karen Goldsmith (Smoking Cessation Services)</b> , NHS Community Health

<p>8. Infant mortality</p>	<ul style="list-style-type: none"> <li>a) Raise awareness of maternal and early years service and increase referrals from pregnant women who have BMI above 30</li> <li>b) Promote home visits and telephone support of Breastfeeding Support Service and of Breastfeeding Support Group at Bentley West Children's Centre</li> <li>c) Map out various initiatives and uptake of services within Darlaston and Bentley relating to infant mortality</li> <li>d) Deliver Family Nurse Partnership Programme (FNP) aimed at young vulnerable families</li> <li>e) Promote early booking in of pregnancy (before 10 weeks of pregnancy) through children centres</li> <li>f) Promote Community Genetics Counsellor for inherited conditions</li> </ul>	<p><b>Rabina Ayaz/Rachel Andrews/Lyn Gostling (NHS Walsall Public Health), Fran Fahy/Karen Goldsmith (Smoking Cessation Services)</b>, Healthy Child Programme, Walsall Community Health, Manor Hospital</p>
----------------------------	---	--

Workstream priority: **Tackling worklessness and employability**

Wards affected: Bentley and Darlaston North  
Darlaston South

Aims/objectives: Reduce the impact of worklessness through enhanced employment opportunities

<b>Local Issues</b>	<b>Actions (bold actions completed or ongoing)</b>	<b>Lead and Accountable Partners Involved</b>
1. Welfare benefit take-up	<ul style="list-style-type: none"> <li>a) Identify gaps in existing welfare benefit take-up provision</li> <li><b>b) Arrange awareness sessions where appropriate</b></li> <li>c) Integrate with Walsall Adult Community College's financial awareness programme</li> </ul>	<b>Bernard Cysewski (Revenues Service)</b> , Steps to Work, Walsall Adult Community College
2. Access to local training and support	<ul style="list-style-type: none"> <li>a) Identify local training needs</li> <li><b>b) Identify potential local training venues</b></li> <li>c) Deliver training and support sessions where appropriate</li> <li><b>d) Increased service provision in Bentley area through Mobile Information Unit and Steps to Work/Old Hall Peoples Partnership link</b></li> <li>e) Development and promotion of Integrated Young People's Support Services volunteering and apprenticeship scheme</li> <li>f) Deliver Step Up Step Out with Walsall Housing Group to support people into training, education and employment</li> </ul>	<b>Jane Kaur Gill (Economic Regeneration)</b> , local councillors, Darlaston JET, Jobcentre Plus, Integrated Young People's Support Services, Walsall College, Walsall Adult Community College, Walsall Housing Group
3. Awareness of local and regional issues concerning	<ul style="list-style-type: none"> <li>a) Discuss worklessness issues at themed Area Community meeting to highlight priorities</li> </ul>	<b>Jane Kaur Gill (Economic Regeneration)</b> , local councillors, Darlaston JET, Jobcentre

worklessness		Plus, Integrated Young People's Support Services, Walsall College, Walsall Adult Community College
4. Increase support to local community groups	a) Organise funding fayre that will provide local community groups the opportunity to identify suitable funding to support initiatives linked to skills and training, as well as other projects and programmes	<b>Lyndon Parkes (Area Manager),</b> Community Development, local councillors, Big Lottery Fund, Heritage Lottery Fund, Sport England, Arts Council, Children in Need, Comic Relief

Workstream priority: **Improve educational achievement**

Wards affected: Bentley and Darlaston North  
Darlaston South

Aims/objectives: Improve educational achievement within all years to close the gap against the Borough average

<b>Local Issues</b>	<b>Actions (bold actions completed or ongoing)</b>	<b>Lead and Accountable Partners Involved</b>
1. Appropriate number of school places available for local area need	a) Develop system for monitoring and reporting required and available school places	<b>Graham Talbot (SERCO)</b> , Children's Services, local councillors, Darlaston and Bentley Children's Area Partnerships
2. Adequate investment into the physical infrastructure of local primary schools	a) Identify investment requirements b) Identify investment shortfalls	<b>Graham Talbot (SERCO)</b> , Children's Services, local councillors, Darlaston and Bentley Children's Area Partnerships
3. Awareness of local, regional and national issues concerning schools and education	<b>a) Discuss education issues at themed Area Community meeting to highlight priorities</b>	<b>Graham Talbot (SERCO)</b> , Children's Services, local councillors, Walsall College
4. Before/after school care for children and families	<b>a) Identify before/after school care requirements</b> <b>b) Identify shortfall in provision</b> <b>c) Arrange appropriate provision</b>	<b>Donna Magher (Extended Schools Co-ordinator)</b> , SERCO, Children's Services, local councillors
5. Bullying and anti-social behaviour in schools	<b>a) Introduce School Help Advice Reporting Page (SHARP) to local primary schools</b> <b>b) Sharp system installed in two of the ten primary schools by end of 2010</b> c) Referral of vulnerable groups to Targeted Youth Support panel	<b>PC Brian Churm (West Midlands Police)</b> , all primary schools in Darlaston South, Darlaston North and Bentley wards, local councillors, SERCO, Walsall College, Integrated Young People's Support Services

	d) Delivery of anti-bullying sessions in schools	
6. Parental engagement in schools	<ul style="list-style-type: none"> <li>a) Increase opportunities for engaging parents in school and education activity</li> <li>b) Promote positive aspects of parental engagement</li> <li>c) Integrate with Walsall Adult Community College's Family Learning programme</li> </ul>	<b>Graham Talbot (SERCO)</b> , Children's Services, local councillors, Darlaston and Bentley Children's Area Partnerships, Walsall College, Walsall Adult Community College



Workstream priority: **Enhance leisure and community facilities**

Wards affected: Bentley and Darlaston North  
Darlaston South

Aims/objectives: Enhance the provision and accessibility of local leisure and community facilities

<b>Local Issues</b>	<b>Actions (bold actions completed or ongoing)</b>	<b>Lead and Accountable Partners Involved</b>
1. Existing provision of adult and family services	<ul style="list-style-type: none"> <li>a) Identify existing provision across statutory, voluntary and private sectors</li> <li>b) Identify shortfall or duplication</li> </ul>	<b>Lyndon Parkes (Area Manager)</b> , local councillors, Community Development, Sport and Leisure, Walsall Adult Community College
2. Existing provision of children and young people's services	<ul style="list-style-type: none"> <li><b>a) Improve children and young people's service provision through local community venues</b></li> <li><b>b) Improvements to green spaces where identified for use by young people</b></li> <li><b>c) Provide additional activities at community venues</b></li> <li><b>d) Engagement day with young people in Bentley to identify need held in November 2010</b></li> <li><b>e) Area Partnership, Walsall Housing Group, West Midlands Police and Integrated Young People's Services have supported additional activities for young people delivered by Moxley People's Centre</b></li> <li>f) Engage Walsall Active Youth to deliver prevention programmes to young people at risk of being overweight</li> </ul>	<b>Nigel Patterson (Integrated Young Peoples Support Services)</b> , local councillors, Greenspaces, West Midlands Police, Sport and Leisure

<p>3. Existing condition and activities delivered from local community buildings</p>	<p>a) Identify and implement improved opportunities including:</p> <ul style="list-style-type: none"> <li>• <b>Moxley People's Centre</b></li> <li>• <b>Leys Hall</b></li> <li>• <b>Old Hall People's Partnership Centre</b></li> <li>• <b>Darlaston All Active</b></li> <li>• <b>Darlaston Youth Centre</b></li> <li>• <b>Darlaston Town Hall</b></li> <li>• <b>Darlaston Community Association Sports &amp; Social Centre (Darlaston Rec)</b></li> <li>• <b>Darlaston Swimming Baths</b></li> </ul>	<p><b>Lyndon Parkes (Area Manager)</b>, local councillors, Moxley People's Centre, Old Hall People's Partnership, Darlaston All Active, Community Development, Arts &amp; Events, Estates, Walsall Adult Community College, District Centre Management, Sports and Leisure</p>
<p>4. Physical improvements to open spaces</p>	<p>a) <b>Environmental improvements to Kings Hill Park</b>  b) <b>Environmental improvements to George Rose Park</b>  c) <b>Environmental improvements to Victoria Park</b></p>	<p><b>Dan Gallagher (Greenspaces)</b>, local councillors, local Friends Groups, Walsall Adult Community College, Walsall College, Street Pride, Community Payback, District Centre Management</p>

## AREA COMMUNITY PLAN ACTIONS – WILLENHALL AND SHORT HEATH

Workstream priority: **Tackling anti-social behaviour and crime**

Wards affected:     Short Heath  
                           Willenhall North  
                           Willenhall South

Aims/objectives:     Reduce the incidents of crime and anti-social behaviour

Local Issues	Actions (bold actions completed or ongoing)	Lead and Accountable Partners Involved
1. Anti-social behaviour in New Invention	<ul style="list-style-type: none"> <li><b>a) Increased Police presence in area to tackle anti-social behaviour</b></li> <li><b>b) Establishment of new Police base at New Invention Square</b></li> <li><b>c) Police patrols deployed at times prone to anti-social behaviour</b></li> <li><b>d) Community clear-up day held</b></li> <li>e) Increase youth engagement</li> <li>f) Develop community reassurance activities</li> <li>g) Increase level of community organisations involved</li> <li><b>h) Steering group established and meeting regularly</b></li> <li>i) Develop outdoor youth shelters</li> </ul>	<p><b>Sergeant Adrian Naik (West Midlands Police)</b>, Safer Walsall Partnership, West Midlands Fire Service, Community Safety, New Invention Community Forum, Beacon School, Walsall Housing Group, local councillors, Integrated Young People's Support Services, Beacon Football Club, Anti-Social Behaviour Unit</p>
2. Anti-social behaviour in and around Willenhall town centre	<ul style="list-style-type: none"> <li><b>a) Implement youth intervention project on Willenhall Park</b></li> <li>b) Pilot project with traders in town centre</li> <li><b>c) Deployment of West Midlands Fire Cycle</b></li> </ul>	<p><b>Sergeant Sushy Kumar (West Midlands Police)</b>, local councillors, Street Pride, Walsall Housing Group, Greenspaces, West Midlands Fire Service, Integrated Young</p>

	<p><b>teams</b></p> <p><b>d) Funding bid successful from Integrated Young People's Support Services for activities (£1,568)</b></p> <p><b>e) Intervention agreed to improve alleyways and car parks via Operation Intrusive (West Midlands Police)</b></p> <p>f) Introduction of a business information list for Police</p>	<p>People's Support Services, Environmental Health, Anti-Social Behaviour Unit, District Centre Management</p>
<p>3. Anti-social behaviour in alleyways</p>	<p>a) Create further capacity with Neighbourhood Watch and Street Champions</p> <p>b) Increase boundary protection measures</p> <p><b>c) Visits undertaken with relevant partners to map priorities including Police, Fire Services and Reassurance Team to identify hotspots</b></p> <p><b>d) Street Champion and Neighbourhood Watch event held and steering group established</b></p>	<p><b>Jo Sheeran (Rights of Way Officer)</b>, West Midlands Police, local councillors, Safer Walsall Partnership, Street Pride, Integrated Young People's Support Services, West Midlands Fire Service, Environmental Health, Neighbourhood Watch</p>
<p>4. Anti-social behaviour around Castle Drive and Pool Hayes Community School</p>	<p>a) Increase targeted intervention by Anti-Social Behaviour Unit and Police in partnership with Pool Hayes Community School and Castle Drive traders</p> <p>b) Increase community reassurance activity</p> <p><b>c) Youth provision increased at Pool Hayes Youth Club with additional hours for two youth workers</b></p> <p><b>d) Support in place for local traders on Castle Drive via Police and Anti-Social Behaviour Unit</b></p>	<p><b>Wayne Palmer (Pool Hayes Community Association)</b>, Integrated Young People's Support Services, local councillors, Safer Walsall Partnership, Street Pride, West Midlands Fire Service, Pool Hayes Community School, Public Safety</p>

<p>5. Anti-social behaviour around Guru Nank Sikh Gurdwara</p>	<p>a) Increase partnership working with Gurdwara  b) Implement Police enforcement of anti-social behaviour  <b>c) Action plan in place with Guru Nank Sikh Gurdwara, Anti-Social Behaviour Unit and Police</b>  <b>d) Domehawk camera installed</b>  <b>e) Educational talks arranged in schools to increase awareness and links</b></p>	<p><b>Tanya Shore (Community Safety)</b>, Guru Nank Sikh Gurdwara, local councillors, Safer Walsall Partnership</p>
<p>6. Anti-social behaviour on green spaces and canal towpaths</p>	<p><b>a) Detached youth workers continue to attend identified hotspot areas</b>  b) Increase provision of activities on green spaces  c) Partner Neighbourhood Watch and Friends of green spaces groups to take ownership of areas</p>	<p><b>Neil Butler (Community Safety)</b>, West Midlands Police, local councillors, Safer Walsall Partnership, Integrated Young People's Support Services, Community Safety, Walsall Housing Group, Street Pride, Environmental Health</p>
<p>7. Anti-social behaviour at derelict properties and buildings</p>	<p>a) Work closely with Walsall Council Enforcement and other partners to map and ensure security of properties  b) Void Property Group re-established to address issues</p>	<p><b>Tanya Shore (Community Safety)</b>, West Midlands Police, Safer Walsall Partnership, local councillors, West Midlands Fire Service, Planning, Enforcement, Estates</p>
<p>8. Information to residents about anti-social behaviour</p>	<p>a) Increase effective communications mechanisms to remove misconceptions around anti-social behaviour  b) Increase community reassurance activities to tackle fear of crime, community integration and tensions  c) Establish intergenerational projects  d) Support Neighbourhood Watch and Street</p>	<p><b>Ravi Pannu (Reassurance Team)</b>, West Midlands Police, local councillors, West Midlands Fire Service, Neighbourhood Watch, Anti-Social Behaviour Unit</p>

	<p>Champions</p> <p>e) Increase partnership working to share information</p> <p><b>f) Communication methods and plan established by workgroup</b></p> <p><b>g) Street Champion and Neighbourhood Watch event arranged</b></p>	
9. Crime suffered by local businesses	a) Implement a Smartwater business watch programme	<b>Diane Mansell (District Centre Management)</b> , West Midlands Police
10. Anti-social behaviour at Fairlawn Close	<p><b>a) Hotspots for drug taking identified</b></p> <p>b) Remove drug paraphernalia</p> <p>c) Gate off access way to prevent unauthorised access</p>	<b>Sergeant Adrian Naik (West Midlands Police)</b> , Walsall Housing Group, Safer Walsall Partnership
11. Anti-social behaviour at St. Anne's and St. Giles	<p>a) Improve CCTV at high rise blocks in Willenhall for St. Anne's and St. Giles</p> <p>b) Improve emergency response time of night patrol service to St. Anne's and St. Giles</p> <p>c) Police to monitor situation</p>	<b>Sergeant Adrian Naik (West Midlands Police)</b> , Walsall Housing Group, Safer Walsall Partnership, West Midlands Fire Service

Workstream priority: **Positive activities for young people**

Wards affected: Short Heath  
Willenhall North  
Willenhall South

Aims/objectives: Increase positive and educational activities for 13-19 year olds particularly after school and during holidays

Local Issues	Actions (bold actions completed or ongoing)	Lead and Accountable Partners Involved
1. Scope of existing provision by youth providers	a) Organise area-based event to map, network, consult and discuss provision <b>b) Event undertaken to mirror Walsall-wide consultation event for local Willenhall providers</b>	<b>Lusia Gallagher (Integrated Young People's Support Services)</b> , Willenhall Children's Area Partnership, Pool Hayes Community Association, Sport and Leisure
2. Communication between local youth providers	a) Organise event for providers to discuss issues, share information and work together to deliver projects b) Promote external funding opportunities <b>c) External funding opportunities distributed electronically</b>	<b>Lusia Gallagher (Integrated Young People's Support Services)</b> , Willenhall Children's Area Partnership, Pool Hayes Community Association, Walsall College
3. Level of after school and holiday provision available	a) Work with partner agencies to meet needs of young people matching services to needs b) Encourage external funding applications from local organisations to increase provision <b>c) Summer holiday activities across partnership agreed and planned</b> <b>d) Opportunities being scoped to identify alternative funding opportunities to replace Play Builder</b> e) Deliver WAY 4WARD for young people to	<b>Lusia Gallagher (Integrated Young People's Support Services)</b> , Pool Hayes Community Association, Walsall College, Sport and Leisure

	provide lifestyle advice and activities	
4. Level of family intervention support for parents	<ul style="list-style-type: none"> <li>a) Consult and research into needs of families with young people who require additional support</li> <li>b) Identify potential interventions in local areas accessible to parents</li> <li>c) Launch pilot intervention and support project</li> <li>d) Deliver Fun 4 Life weight management programme for young people at risk of being overweight</li> <li>e) Integrate with Walsall Adult Community College's Family Learning programme</li> </ul>	<b>Tahra Hussain (Children's Centres),</b> Integrated Young People's Support Services, Pool Hayes Community Association, Sport and Leisure, Walsall Adult Community College
5. Opportunities for young people to increase skills and involvement in local projects	<ul style="list-style-type: none"> <li>a) Work with local providers such as Connexions to engage young people as part of wider youth engagement activities</li> <li>b) Work with Walsall College to deliver small scale projects promoting volunteering with young people</li> <li><b>c) Established Junior Neighbourhood Watch and Junior Street Champions</b></li> <li>d) Project in development with Walsall College for green space improvements</li> <li>e) Integrate with Walsall Adult Community College's Citizen's University programme</li> </ul>	<b>Tim Luker (Integrated Young People's Support Services),</b> Connexions, Walsall College, Pool Hayes Community Association, Walsall Adult Community College



Workstream priority: **Improving green spaces**

Wards affected: Short Heath  
Willenhall North  
Willenhall South

Aims/objectives: Improve green spaces and increase the number of local people accessing and taking responsibility for local green space areas

Local Issues	Actions (bold actions completed or ongoing)	Lead and Accountable Partners Involved
1. Capacity of local 'Friends of' groups to encourage greater ownership of local spaces	a) Develop specific training and events for local people interested in becoming green space champions or establishing local projects b) Promote external funding opportunities for projects c) <b>Local groups attended funding fayre event held in November 2010 to identify funding opportunities</b> d) <b>Delivered Walk On – series of five walks across Willenhall and Short Heath</b> e) Integrate with Walsall Adult Community College's environment sustainability programme	<b>Sam Mills (Greenspaces)</b> , Groundwork West Midlands, Community Development, Sport and Leisure, Walsall Adult Community College
2. Safety and cleanliness of green spaces	a) Involve Park Rangers at Area Partnership meetings b) Promote mechanism for reporting incidents to residents c) Utilise intelligence regarding crime hotspots d) Encourage greater community participation, involvement and ownership of local spaces, in particular with young people	<b>Lynne Tandy (Greenspaces)</b> , Countryside Services, Street Pride, West Midlands Police, local councillors, Regeneration

	<ul style="list-style-type: none"> <li>e) Implement specific youth-related projects on green spaces to eliminate likelihood of vandalism and anti-social behaviour</li> <li>f) Develop 'wayfinder' project with Regeneration to link Willenhall Park with the town centre</li> </ul>	
3. Increase leisure facilities on green spaces	<ul style="list-style-type: none"> <li>a) Match current services to needs of community via consultation and pilot project schemes</li> <li>b) Encourage greater use of Willenhall Park building, in particular for youth engagement</li> <li><b>c) Willenhall youth engagement pilot project to be launched in February 2011</b></li> </ul>	<b>Lusia Gallagher (Integrated Young People's Support Services)</b> , local councillors, Sport and Leisure
4. Improve Willenhall Park	<ul style="list-style-type: none"> <li>a) Support the development of Friends of Willenhall Park to maximise opportunities for community engagement and involvement</li> <li>b) Create orienteering route</li> <li>c) Encourage local organisations to use the park to deliver projects, including the park building and skate park</li> <li>d) Deliver Race for Life UK project</li> </ul>	<b>Councillor Coughlan</b> , Friends of Willenhall Park, Greenspaces, Community Development, local councillors, Sport and Leisure
5. Improve Rough Wood	<ul style="list-style-type: none"> <li>a) Support the development of Friends of Rough Wood to maximise opportunities for community engagement and involvement</li> <li>b) Schedule regular litter picks and community events</li> <li>c) Facilitate partner working with local primary schools to encourage educational activities</li> <li>d) Work with partners to develop long-term,</li> </ul>	<b>Friends of Rough Wood</b> , Greenspaces, Community Development, Sports and Leisure, local councillors, Walsall Adult Community College

	<p>sustainable plan for developing Rough Wood</p> <ul style="list-style-type: none"><li>e) <b>Funding secured to establish new group</b></li><li>f) Integrate with Walsall Adult Community College's environment sustainability programme</li></ul>	
--	---	--

Workstream priority: **Reducing health inequalities**

Wards affected: Short Heath  
Willenhall North  
Willenhall South

Aims/objectives: Improve health and well-being of residents particular tackling child obesity, sexual health, cancer screening and smoking cessation

Local Issues	Actions ( <b>bold actions completed or ongoing</b> )	Lead and Accountable Partners Involved
1. Awareness of healthy lifestyle actions	a) Identify specific Health Profiles that map local health issues on a local neighbourhood basis to guide awareness campaigns <b>b) Discuss local health issues at themed Area Community meeting to highlight priorities</b> c) Integrate with Walsall College's 'Be Healthy' Week	<b>Andy Hood/Barbara Watt /Lesley Dews (NHS Walsall Public Health), Alan Jarvis (Community Health)</b> , Sure Start Children's Centres, Walsall Housing Group, Extended Schools Co-ordinators, Willenhall Children's Area Partnership, Pollution Control, GPs, Green Spaces
2. Reduce child and adult obesity	a) Increase participation of young people in healthy eating activities and exercise b) Implement Walking Bus projects with primary schools c) Organise events and outdoor projects in green spaces <b>d) Area health profiles distributed to partner agencies to prioritise and target activity</b> e) Engage Walsall Active Youth to deliver preventative work for young people at risk of being overweight f) Integrate with Walsall Adult Community College's Family Learning programme	<b>Donna Chaloner (NHS Walsall)</b> , local councillors, Integrated Young People's Support Services, Walsall College, Sport and Leisure, Walsall Adult Community College, Sure Start Children's Centres, Walsall Housing Group, Extended Schools Co-ordinators, Green Spaces, Highways

<p>3. Increase sexual health awareness with young people</p>	<ul style="list-style-type: none"> <li>a) Develop partnership working between youth projects and health providers</li> <li>b) Provide accessible venues for accessing specialist support and advice – generate attendances for Chlamydia testing for 15-24 year olds</li> <li>c) Use a greater range of communications methods including internet and messaging</li> <li>d) Integrate with Walsall College’s ‘Be Healthy’ Week</li> <li>e) Integrate with Walsall Adult Community College’s Family Learning programme</li> </ul>	<p><b>Jo Wood/Donna Chaloner/Andy Hood (NHS Walsall)</b>, local councillors, Integrated Young People’s Support Services, Walsall College, Walsall Adult Community College</p>
<p>4. Increase awareness and uptake of bowel, breast and cervical cancer screening</p>	<ul style="list-style-type: none"> <li>a) Work with partners to increase awareness of local programmes</li> <li>b) Explore innovative ways of increasing uptake</li> <li>c) Implement specific cancer screening project for area</li> <li>d) Improve communication mechanisms for information to target age groups</li> <li>e) Organise Race for Life UK on Willenhall Park</li> <li><b>f) Willenhall screening project organised</b></li> </ul>	<p><b>Donna Chaloner/Jo Wood/Liz Rochelle (NHS Walsall)</b>, local councillors, Integrated Young People’s Support Services, Social Care &amp; Inclusion</p>
<p>5. Reduce smoking levels and increase awareness of Chronic Obstructive Pulmonary Disease (COPD)</p>	<ul style="list-style-type: none"> <li>a) Address smoking levels promoting help to quit initiatives and local stop smoking services</li> <li>b) Promote Healthy Houses initiatives</li> <li>c) Check availability and accessibility of respiratory services feeding back to commissioners</li> <li>d) Increase referrals to Health Trainer scheme</li> <li>e) Increase uptake of NHS Health Checks at</li> </ul>	<p><b>Nicola Humphrey (NHS Walsall Public Health), Fran Fahy/Karen Goldsmith (Smoking Cessation Services), Donna Chaloner (NHS Walsall)</b>, Walsall Community Health, local councillors, Integrated Young People’s Support Services, Walsall College, District Centre Management</p>

	<p>local GPs</p> <p>f) Implement targeted project in local community venues such as pubs and community centres</p> <p>g) Implement targeted project for over 40s males</p> <p>h) Implement youth engagement and education activities</p>	
6. Increase participation in sport and recreation	<p>a) Develop local accessible projects for area to increase opportunities</p> <p>b) Explore external funding opportunities to improve local facilities and opportunities</p> <p>c) Encourage access to FA Coaching badges and other similar qualifications in area</p> <p>d) Increase the capacity of local sports and community organisations to increase and improve their provision</p> <p><b>e) Area Partnership funding netball pilot project at CHART</b></p> <p><b>f) Local organisations attended funding fayre held in November 2010 to identify funding opportunities</b></p> <p>g) Deliver WAY 4WARD to provide lifestyle advice and actions for young people</p> <p>h) Integrate with Walsall Adult Community College's Health and Well-being programme</p>	<b>Ben Collins/Jo Hudson/Susie Gill (NHS Walsall), Ben Percival (Sport and Leisure)</b> , local councillors, Integrated Young People's Support Services, Green Spaces, Walsall College, Walsall Adult Community College
7. Feasibility to establish a GP practice in Short Heath	<p>a) Initial feasibility meeting with NHS Walsall (Primary Care Contracting) regarding the opportunity</p> <p>b) Develop business case and market research</p>	<b>Barbara Watt/Andy Hood(NHS Walsall Public Health), Phil Griffin (NHS Walsall Public Health)</b> , local councillors, Social Care & Inclusion, Regeneration

	<b>c) Utilise accessibility planning software to identify if and where access issues to GPs persist</b>	
--	---	--