

Sarah Middleton
Chief Executive
Black Country Consortium Ltd

Black Country LEP

- ❖ LEPs - Overview
- ❖ Governance
- ❖ Strategy
- ❖ Delivery.
- ❖ Cross LEP Collaboration

Local Enterprise Partnerships (LEPs)

- Established in 2011 – (BEIS, DCLG, Cities and Growth Unit).
- 38 Voluntary **partnerships**.
- Local business leaders and local authorities
- Focus **local** economic priorities.
- A vital role in supporting businesses and innovation.
- Skills – Infrastructure Place Making – Business Competitiveness.
- Influencing role e.g. PM LEP Council

Black Country LEP

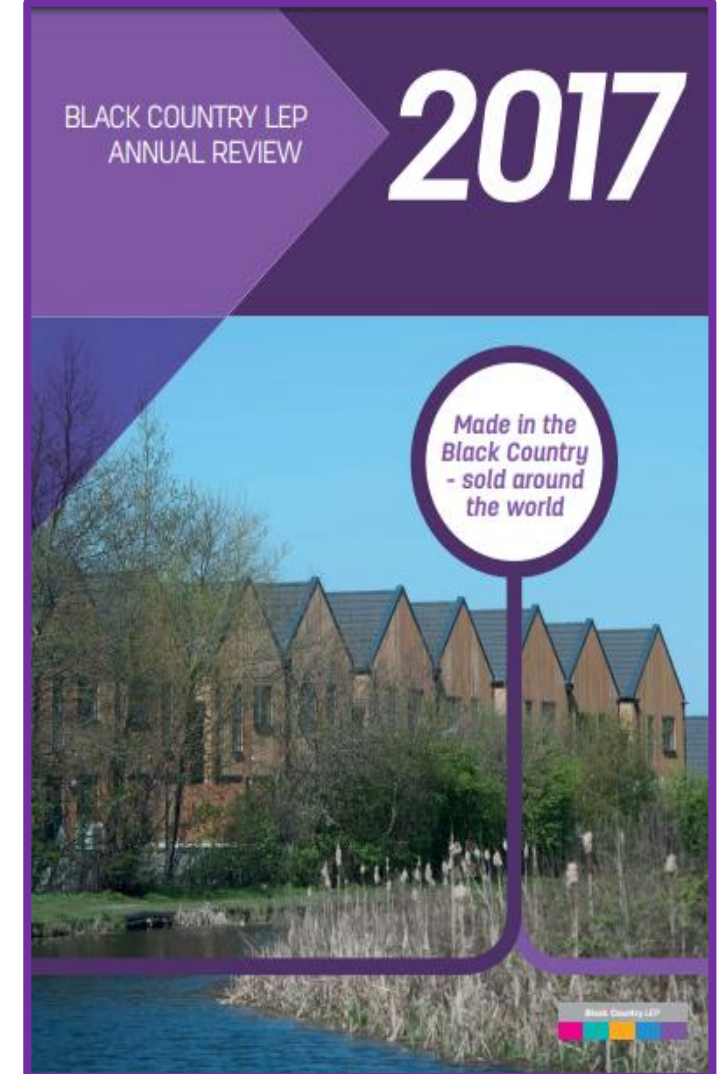
- Consortium – Secretariat to the BCLEP.
- Private Sector BC LEP Chair – Stewart Towe
- 13 Member Board including 6 private sector, LA Leaders, HE, FE
- Role of Board Champions.
- Annual Conversation outcome - 5th LEP in England

Black Country LEP - Governance

- Black Country Joint Committee
 - Accountable Bodies
- Black Country Advisory Board
- Black Country LEP
- Black Country Consortium Ltd
 - Guarantee Members – Black Country Leaders.
- Annual Conversation BCLEP - Exceptional Governance rating

Black Country Strategy

Black Country LEP



Strategy into Delivery – An Evidence Based Approach

Black Country LEP

Our Ambitions - Black Country Strategic Economic Plan – Black Country PMF

Annual Economic Review Report – sets out our key measures of success in the Black Country Performance Management Framework

Delivering the Ambitions

12 Strategic Programmes covering 3 themes of People, Place and Business

Thematic & Sectoral Approach – Black Country Propositions

* 4 priorities areas for proposition development: High Value Manufacturing City; Black Country as Garden City; Fit for Purpose Skills System; Transport Infrastructure

- Sector Plans - 5 Transformational & 5
- ❖ 5 Enabling Sectors

Spatial Approach – Spatial Opportunities

In depth analysis of pipeline opportunities in 11 identified spatial zones and the areas that are outside and serving with an integrated cross boundary BC Core Strategy.

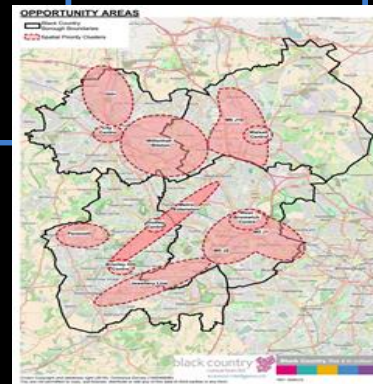
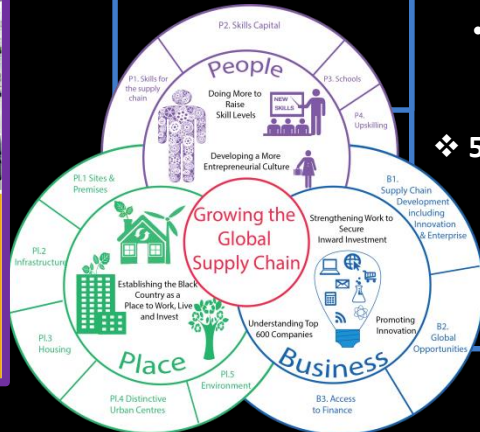
Programme Dashboards

Detailed programme dashboards including:

- ❖ Overall Priority Pipeline
- ❖ Growth Funds
- ❖ Land Remediation Fund (WMCA)
- ❖ Broadband

Sites Details

‘Estate Agent’ details are available for each of our pipeline sites, accessible via our online mapping tool, linking to Midlands Engine and WMCA Investment Prospectuses



Black Country Priority Propositions

HVM CITY

Accelerate the growth of high value manufacturing businesses, inc. action to improve the quality of existing employment locations.



ECONOMIC CAPITAL

Seek maximum economic benefit from our strategic centres and ensure that they contribute to the attractiveness of the Black Country as a place to live, work, visit & invest.



SKILLS FOR BUSINESS, SKILLS FOR LIFE

Ensure that our skills system can meet the needs of businesses and enable residents to benefit from growth



BUSINESS COMPETITIVENESS

Strengthen our business base by creating the conditions for higher levels of business birth, growth and survival and to enable businesses to improve their productivity and competitiveness.



GARDEN CITY

Accelerate house building and improve our housing mix by treating our supply of brownfield land as an opportunity for placeshaping and the creation of sustainable communities



CONNECTED BLACK COUNTRY

Investment in broadband and transport to support growth by enabling the movement of goods and people.

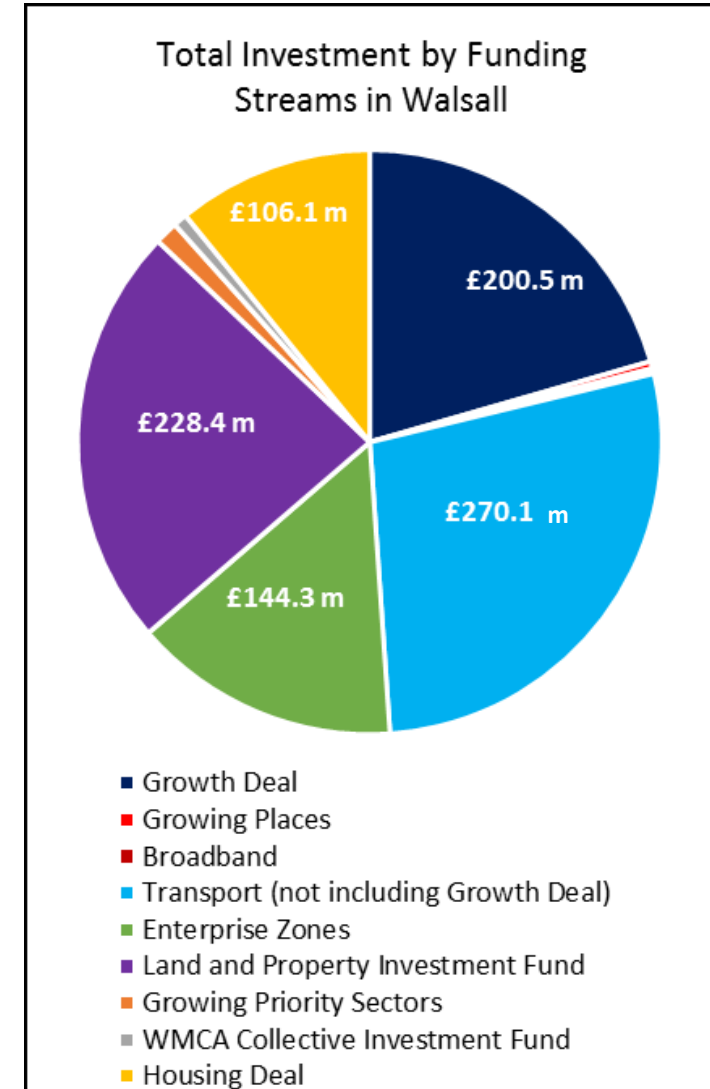
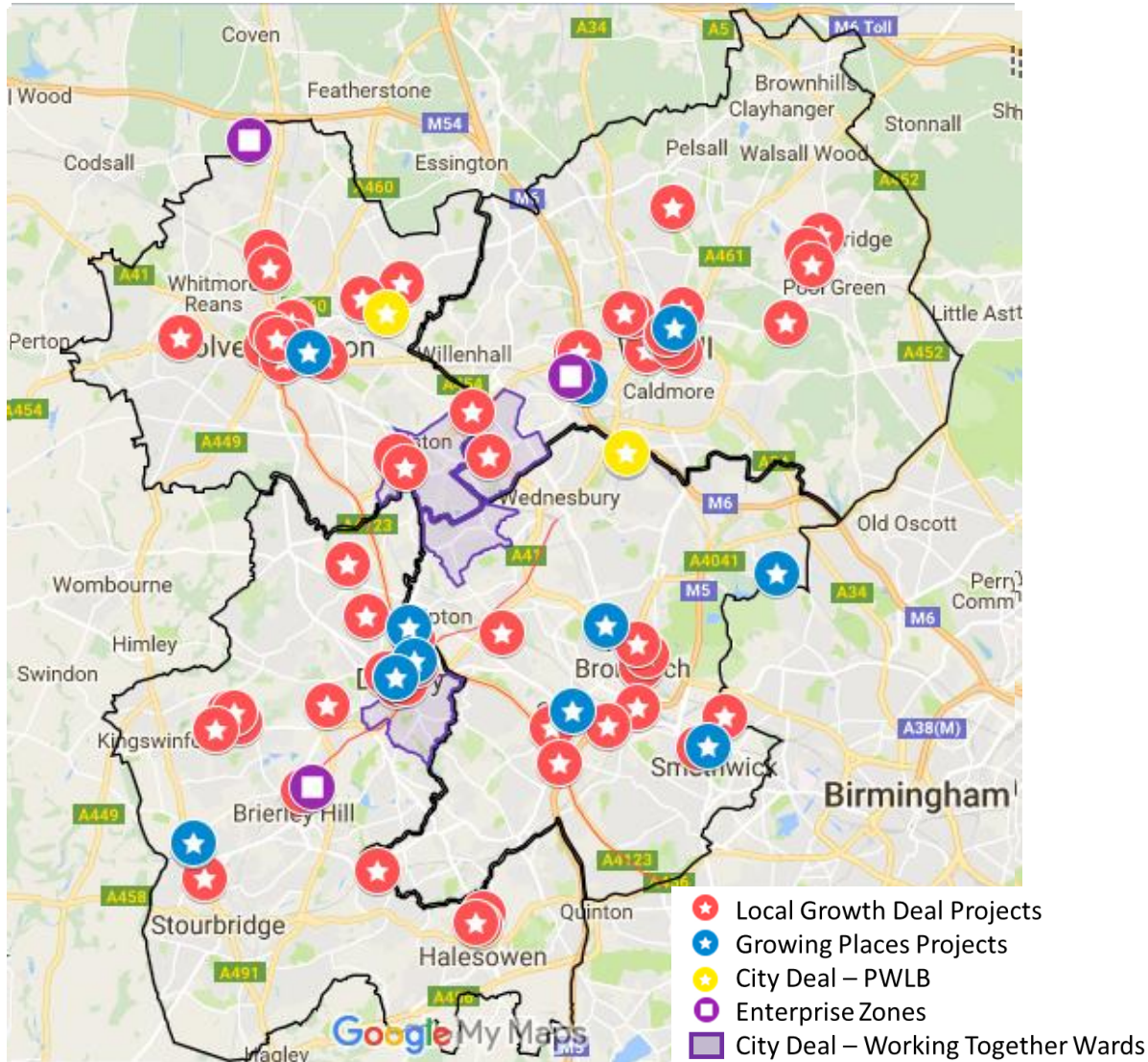


**BLACK COUNTRY
STRATEGIC ECONOMIC
PLAN**

Delivery



Black Country LEP Projects



Black Country LEP Investment

Black Country LEP

Black Country LEP Investment Summary

The total Black Country
Investment Equates to...

£5.7bn



Growth Deal



Funding
£190.85m
Leverage
£513.12m

Total Investment
£704 m

Growing Places



Funding
£13.23m
Leverage
£31.36m

Total Investment
£45m

City Deal



Funding
£7.53m
Leverage
£19.78m

Total Investment
£27m

Broadband



Funding
£2.90m
Leverage
£10.89m

Total Investment
£14m

EUSIF



Funding
£77.43m
Leverage
£45.46m

Total Investment
£123m

Enterprise Zone



Funding
£63.5m
Leverage
£1,304.2m

Total Investment
£1,367.7m

Transport



Funding
£717.01m
Leverage
£645.9m

Total Investment
£1,362.9m

Land And Property Investment Fund



Funding
£155.9m
Leverage
£440.6

Total Investment
£596.6m

Growing Priority Sectors



Funding
£8.35m
Leverage
£34.6m

Total Investment
£42.9m

WMCA Collective Investment Fund



Funding
£10.6m
Leverage
£0.60m

Total Investment
£11.2m

Housing Deal



Funding
£83.9m
Leverage
£72.9m

Total Investment
£156.7m

Growth Hub



Funding
£14.70m
Leverage
£48.22m

Total Investment
£63m

Invest BC



Funding
£0.14m
Leverage
£891.67m

Total Investment
£891m

Sports



Total Investment
£1m

Education & Skills



Total Investment
£1m

LEP Funding



Total Investment
£3m

WM Engine Fund



Total Investment
£250m

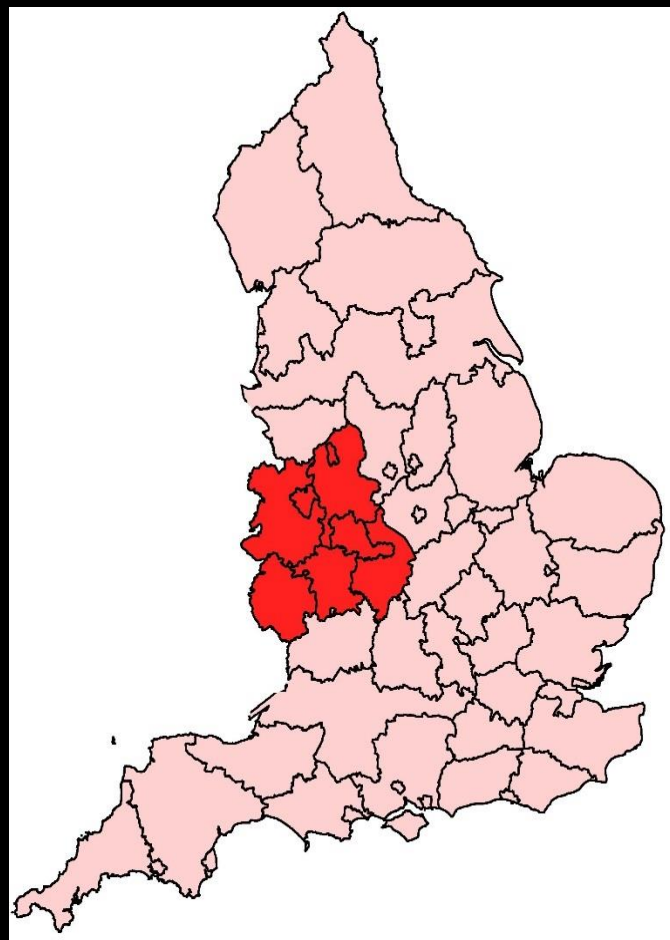
Cross LEP Collaboration

Black Country *LEP*



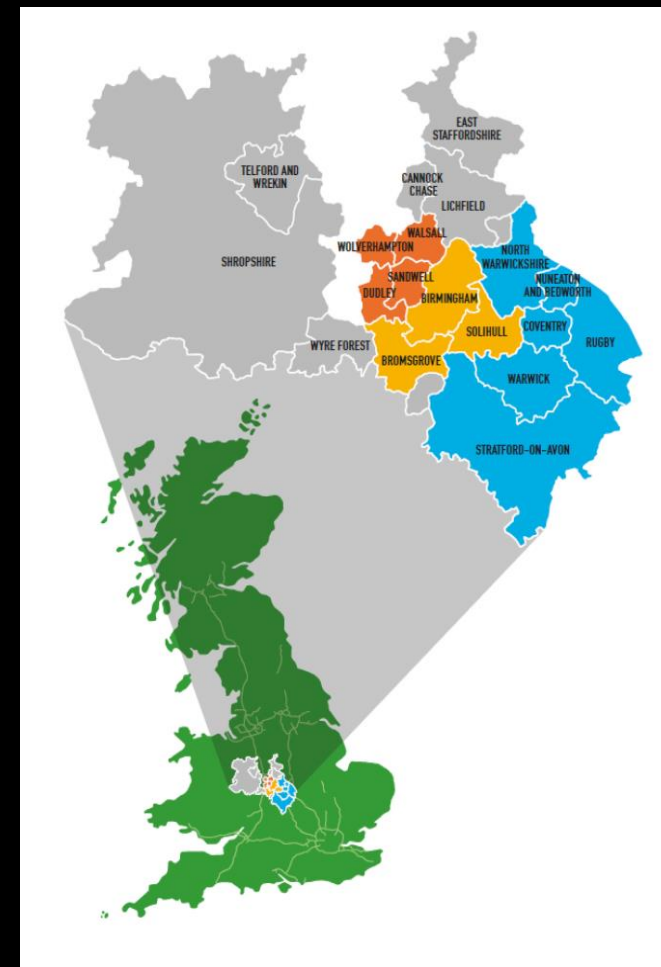
West Midlands

6 LEPs

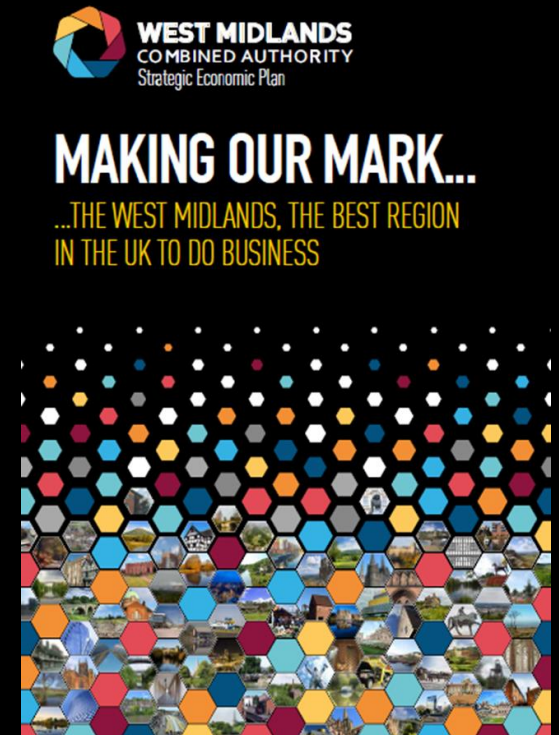
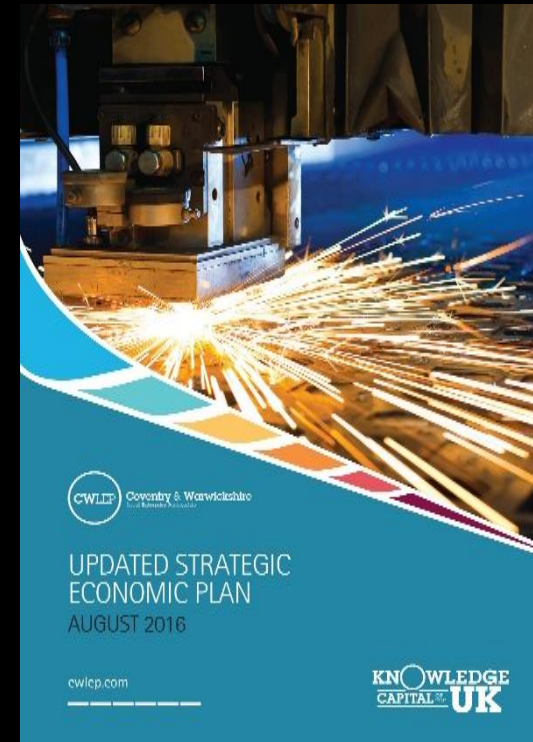
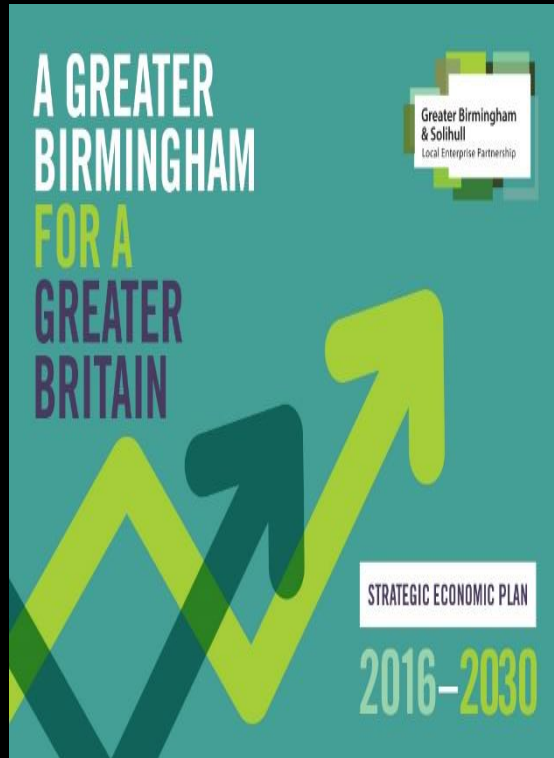


West Midlands CA

3 LEPs

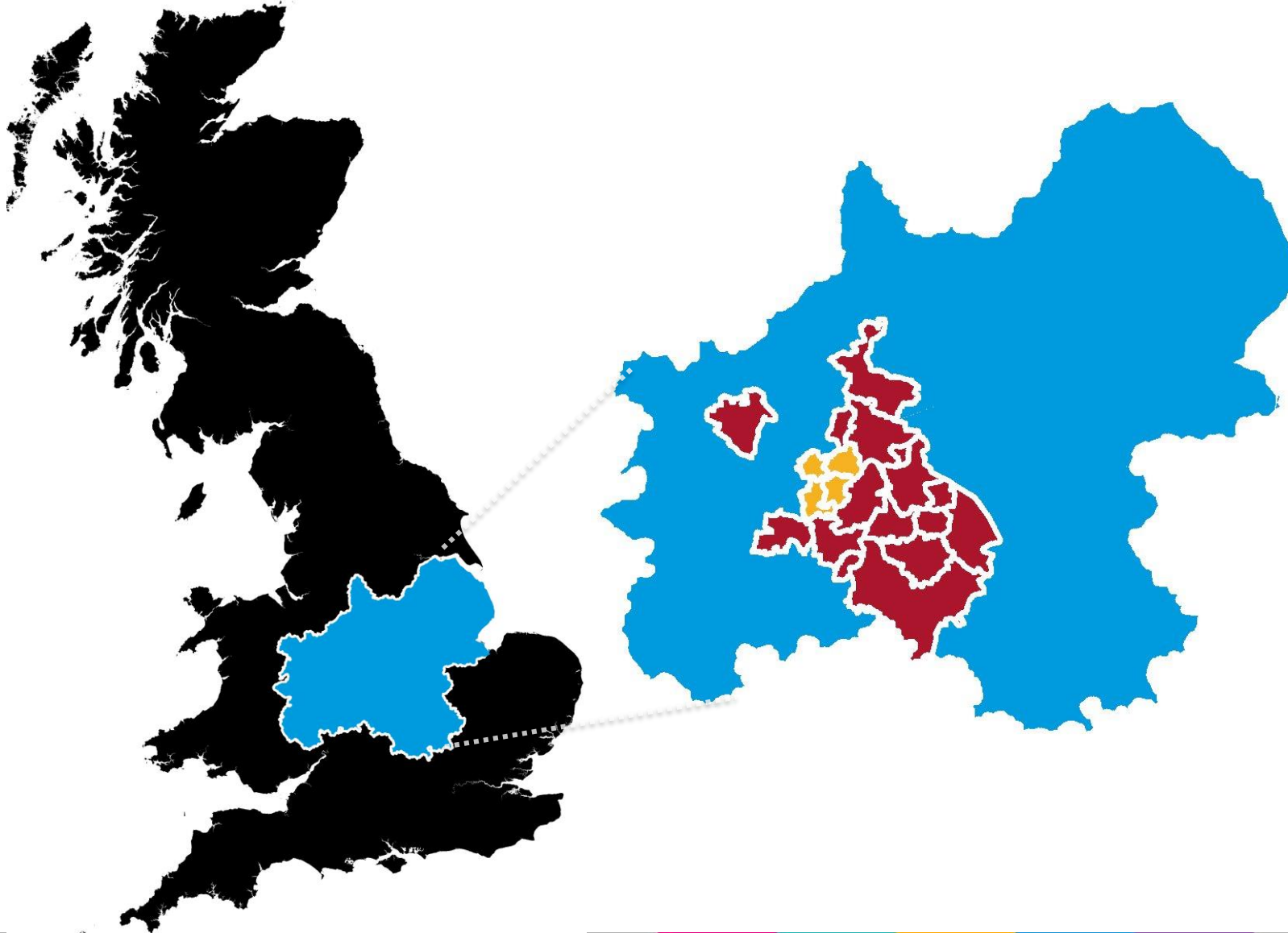


A Family of SEPs – An Economy Plus approach



Midlands Engine

Black Country LEP



**MIDLANDS
ENGINE**  HM Government

**Midlands Engine
Investment Fund
(MEIF) - £250m**

“Made in the Black Country: Sold Around the World”