

## **Local Outbreak Engagement Board**

**03 December 2020**

### **Test, Trace and Isolate Update**

#### **1. Purpose**

This report is an update on the Test, Trace and Isolate initiative in Walsall.

#### **2. Recommendations**

- 2.1 That, subject to any comments Board Members may wish to make, the update report on the Test, trace and Isolate initiative in Walsall be noted.

#### **3. Report detail**

- 3.1 The Test, trace and Isolate work in Walsall continues to be delivered to schedule. The details are available in Appendix A.

The key developments have been summarised below.

#### **Testing for Coronavirus**

- Uptake of PCR testing continues to match regional and national levels
- Testing uptake continues to be somewhat lower in younger age groups, men and BAME groups but active communication messaging continues to promote the benefits and importance of testing.
- There continue to be three operational Local Testing Sites at Walsall Town Hall, Darlaston Community Centre and the University of Wolverhampton.
- The Mobile Testing Unit continues at Wakes Ground Car Park in Willenhall and has the most activity to date.
- Plans are being drawn up for the roll out of lateral flow testing. It is anticipated 10k tests per week will be available to begin with, increasing to 28k and a targeted approach will be adopted across the region focusing first on core workers and the vulnerable.

## **Contact Tracing**

- Contact tracing in Walsall on the 9<sup>th</sup> of September. They have contact traced about 1400 individuals to date; at present they trace about 25 individuals a day.
- Walsall council continues to offer local contact tracing to support the national programme for those cases where the National programme has failed to make contact; they have identified and prevented several outbreaks as a result.
  - Wedding at a private residence resulting in 40 positive cases
  - Cases linked to a nursing home
  - Cases admitted to hospitals
- The team have been successful in contacting previously uncontactable people by tracking down their correct contact details.
- The capacity of the contact tracing team is being increased to meet demand and maximise the number of people who are traced.
- The contact tracing team have initiated welfare checks for COVID positive cases midway through the isolation period to support them to self-isolate.

## **Support for self-isolation**

### **Background papers**

None

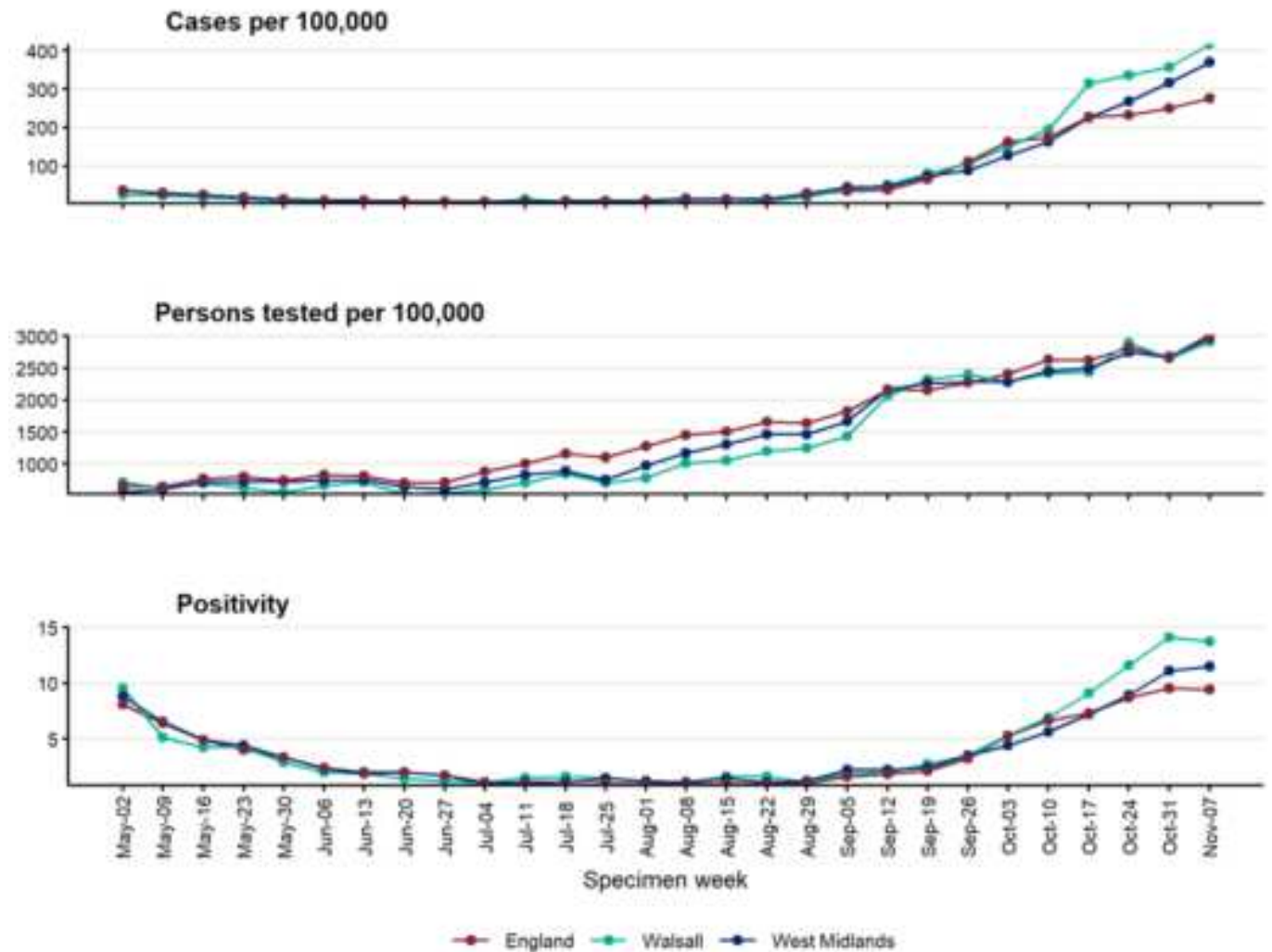
### **Author**

Dr Uma Viswanathan  
Consultant in Public Health  
[uma.viswanathan@walsall.gov.uk](mailto:uma.viswanathan@walsall.gov.uk)

## Appendix A

### Coronavirus Testing in Walsall

Persons tested and cases diagnosed per 100,000 population and positivity per week in Walsall, West Midlands and England (5<sup>th</sup> May 2020 to 13<sup>th</sup> November 2020).



PHE data shows that cases are rising at a faster pace than England & the West Midlands, whilst testing numbers per 100,000 population remain comparable. Positivity for Walsall although greater than both regionally and nationally, does appear to have plateaued.

## Contact tracing data

**Contacts by exposure/activity setting and current contact tracing outcome in Walsall (May 28 2020 to November 17 2020)** *Data has been collected by NHS Track & Trace (NTAT)*

*Unknown exposure: data on exposure/activity setting has not been provided. Uncontactable cases: insufficient contact details provided to contact the person. Failed contact tracing: contact tracing team attempted but did not succeed in contacting an individual*