

Council – 4 November, 2019

Annual Scrutiny Report – 2018/19

Service: Legal and Democratic Services

Wards: All

1. Summary of report

This is the annual report to Council outlining the work of scrutiny in 2018/19.

The report provides an analysis of the work undertaken during the municipal year by the Committees and their respective working groups.

A copy of the annual report is attached at Appendix 1 to this report.

2. Recommendations

That, subject to any comments Members may wish to make, the annual scrutiny report for the 2018/19 municipal year (annexed) be noted.

3. Resource and legal considerations

Scrutiny is a key aspect of the governance framework and an integral part of how the council makes effective decisions. Good scrutiny can help to inform policy making and help ensure that decisions taken by the cabinet are effectively considered prior to implementation. The role of Scrutiny is defined in Walsall Council's constitution, Article 6.

4. Council Corporate Plan Priorities

This report reflects the Council's corporate priority on *Internal Focus – all council services are efficient and effective* as reflection and evaluation on the previous year's scrutiny work enables lessons to be learned and taken forward.

Further to this the report is structured around the Council's five corporate plan priorities to demonstrate how scrutiny committees have contributed to the achievement of the organisation's strategic plan.

5. Risk Management

The role of Scrutiny is fundamental in ensuring that the most effective and informed decisions are taken whilst delivering value for money for residents.

This report provides an overview of the work undertaken by Overview and Scrutiny Committees which helps to achieve these objectives.

Asking members to recognise and review past achievements and consider the potential items to scrutinise helps to ensure that the Overview and Scrutiny Committees focus their attention on the main issues that have strategic

relevance and importance to the council as a whole. Incorporating an effective scoping process enables a risk based approach to be taken in the development of potential work programmes; focussing on the key issues that affect the performance of the council, impact on service delivery or potentially result in service delivery that does not meet resident expectation or offer value for money. The Council's priorities and pledges are all considered when looking at potential work programmes for the following year and frequent performance monitoring reports are presented to individual Overview and Scrutiny Committees.

6. Financial implications

Overview and Scrutiny Committees continually monitor the financial position of the Council and undertake an annual scrutiny process of draft budgets. There are no direct financial implications from this report.

7. Legal implications

Article 6 of the Walsall Council Constitution requires Overview and Scrutiny Committees to report annually to Council on their workings and make recommendations for future work programmes and amended working methods if appropriate.

8. Property implications

There are no direct property implications from this report.

9. Health and wellbeing implications

Work and reviews undertaken by Overview and Scrutiny Committees seeks to have a positive impact on resident's health and wellbeing through influencing the service provision of the Council and its partners. There are no direct health and wellbeing implications from this report.

10. Staffing implications

There are no direct staffing implications from this report.

11. Reducing inequality

This report details all of the work that has been done across the whole borough. Scrutiny Members represent a number of wards across the borough and actively work with residents to best represent their views at Scrutiny. This helps to ensure the delivery of the Council equality duties through promoting a thorough understanding of the needs of our diverse communities and supports the delivery of the Councils vision that: *Inequalities are reduced and all potential is maximised.*

12. Consultation

Individual Committees have sought expert opinion and views from witnesses, where appropriate, to ensure that a balanced perspective is provided against any of the work topics under consideration. This year, evidence has been brought to the Committees by officers, members of the public, officers from other authorities, partners and independent experts.

Author:

Craig Goodall
Senior Democratic Services Officer
Executive | Scrutiny | Charities
☎ 01922 654765
✉ craig.goodall@walsall.gov.uk

Simon Neilson
Statutory Scrutiny Officer
Executive Director (Economy and Environment)

25 October 2019

Scrutiny Annual Report 2018/19



Walsall Council

PROUD OF OUR PAST OUR PRESENT AND FOR OUR FUTURE

Foreword by Councillor John Murray, Chair of the Scrutiny Overview Committee

I am pleased to introduce to you the Scrutiny Annual Report for 2018/19.

The report highlights the important work undertaken by scrutiny members during the last municipal year. It is not a comprehensive list of all the work undertaken by our five Overview and Scrutiny Committees. Rather it focuses on the priorities in the Council's Corporate Plan to demonstrate how scrutiny is contributing to its achievement. Further to this, the case studies are cross-referenced with the Centre for Public Scrutiny's four principles of good scrutiny to demonstrate their impact.

Examples of the excellent work undertaken by Members include young person's mental health, which has been a theme for both the Children's Services and Social Care and Health Overview and Scrutiny Committees. These reviews have called for improved transition between young persons and adult mental health services. The Education Overview and Scrutiny Committee focused on SEND, pupil exclusions and children not accessing education through a working group that made numerous recommendations to Cabinet. The Economy and Environment Overview and Scrutiny Committee took time to understand housing in the private rented sector and how residents in poor quality housing could be supported. The Scrutiny Overview Committee developed a theme on partnerships where Members sought to understand the influence and responsibilities of the varied boards that co-ordinate service delivery across Walsall.

Looking forward, the Scrutiny Overview Committee is seeking to address the points raised in the new Government guidance for Overview and Scrutiny, which was published in May 2018. This should assist in embedding the good practice that exists in Walsall.

Finally, I would like to thank my fellow elected Members, Council officers, partners and members of the public who have participated in, or attended, an Overview and Scrutiny meeting during the last year. It is your efforts that have enabled us to celebrate the successes contained in this annual report.

Councillor John Murray
Chair, Scrutiny Overview Committee

Contents

1. Introduction from Simon Neilson, Statutory Scrutiny Officer
2. Overview of Corporate Plan priorities and the four principles of good scrutiny
3. Economy
4. People
5. Internal focus
6. Children
7. Communities
8. Forward looking
 - a. Scrutiny Overview Committee
 - b. Children's Services Overview and Scrutiny Committee
 - c. Economy and Environment Overview and Scrutiny Committee
 - d. Education Overview and Scrutiny Committee
 - e. Social Care and Health Overview and Scrutiny Committee

Introduction from Simon Neilson, Statutory Scrutiny Officer

I am very pleased to introduce the scrutiny annual report for 2018/19. The report provides the opportunity to review last year's activity within overview and scrutiny and to highlight some of the key developments and look forward to what's planned in 2019/20.

This report details the work of Overview and Scrutiny Committees during 2018/19. It is not an exhaustive account of the work Members have undertaken but gives an overview of the wide variety of work that has taken place throughout the year centred around the Council's Corporate Plan Priorities. This demonstrates how the Council's Overview and Scrutiny Committees are contributing to the authority's strategic direction by helping to create the golden thread from strategic plan into action. The priorities in the Corporate Plan are:

- Economic growth, for all people, communities and businesses
- People have increased independence, improved health and positively contribute to their communities
- Internal focus, all Council services are efficient and effective
- Children have the best possible start and are safe from harm, happy, healthy and learning well
- Communities are prospering and resilient with all housing needs met in safe and healthy places that build a strong sense of belonging and cohesion

Following on from this the contributions of Overview and Scrutiny Committees have been cross-referenced with the Centre for Public Scrutiny's four principles of good scrutiny. This helps to demonstrate the wider contribution that was made by Members.

The four principles of good scrutiny are:

- Provides critical friend challenge to executive policy and decision makers
- Enables the voice and concerns of the public
- Carried out by independent minded councillors who lead and own the scrutiny process
- Drives improvement in public services

There are many other issues that have also been looked at that are not mentioned here but details of all meetings can be found on the Council's committee website.

Looking ahead, the improvements to scrutiny locally proposed by the Scrutiny Overview Committee present an opportunity for developing and improving the way overview and scrutiny is operated and undertaken. I look forward to supporting the development and implementation of these ideas in the year ahead.

Simon Neilson – Statutory Scrutiny Officer

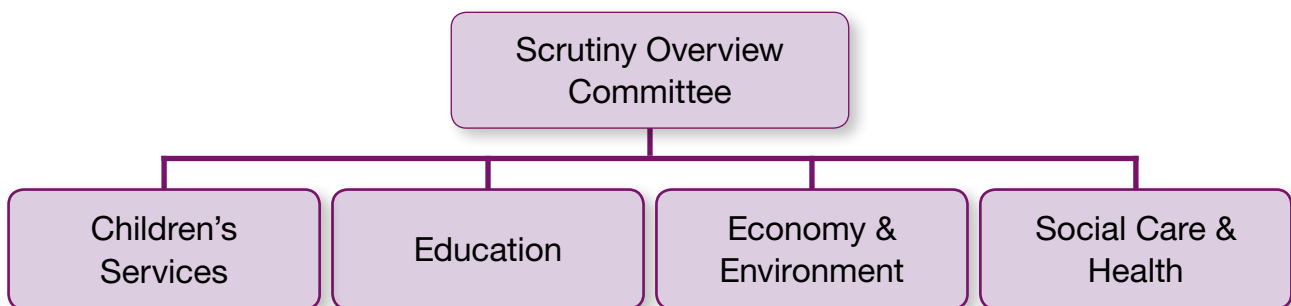
What is Overview and Scrutiny?

Overview and Scrutiny Committees are made up of non-executive members from across all political parties and they exist to provide accountability to the Council and its partners. They have four key roles:

- Holding the executive to account for their decisions;
- Scrutinising local partners (e.g. NHS Walsall);
- Reviewing and developing policies and making recommendations to Council and Cabinet on these; and
- Reviewing services to ensure they are providing value for money and meeting local needs.

Scrutiny also has a vital role in enabling the voice of local residents through community engagement. All meetings are open to the public to attend (except in exceptional circumstances where something has to be taken in private session). The public can also suggest items for scrutiny to consider.

At its meeting in May, 2017, Council set the committee structure and remit for the year ahead which included four committees:



More details on the role of scrutiny can be found on at www.walsall.gov.uk/scrutiny.

Economic growth, for all people, communities and businesses

1. Strategic Transport Policy and Delivery in Walsall and the West Midlands

At its meeting on 18 October 2018, the Economy and Environment Overview and Scrutiny Committee scrutinised transportation matters in the Borough, which included:-

- An overview of transport policy and travel data across Walsall and the West Midlands;
- How transport was contributing to regeneration investment across the Black Country;
- An update on SPRINT (Rapid Bus Transport) proposals between Walsall and Birmingham;
- How the Council was promoting sustainable transport and low-emissions vehicles;
- How the Council was tackling air quality issues affecting schools.

How did this item drive improvement?

Members have increased their understanding of the Borough's transport policy and how it interlinks with the wider West Midlands. The Committee highlighted that air quality was linked with transportation in the Borough. In view of this, the Committee received an update on SPRINT (Rapid Bus Transport) proposals designed to improve public transportation connectively.

2. Black Country Consortium

The Economy and Environment Overview and Scrutiny Committee scrutinised the role of the Black Country Consortium (BCC).

The Committee learned that the BCC provided strategic support, advice and on occasion leadership across the interconnected key areas for growth within the Black Country. This included acting as support team to the Black Country Local Enterprise Partnership (BCLEP). Members learned about:

- The Black Country Strategy and delivery;
- Black Country 'priority propositions', namely:
 - Accelerating the growth of high value manufacturing;
 - Seeking maximum economic benefit from strategic centres;
 - Improving business competitiveness;
 - Equipping people with skills for business and life;
 - Accelerating house building;
 - Supporting investment in broadband and transport systems.
- BCLEP investments and projects including those taking place in Walsall.

How did the item demonstrate scrutiny carried out by independent minded Councillors?

Nationally there has been much criticism of the lack of scrutiny of Local Enterprise Partnerships. By scrutinising the BCC, effectively the BCLEPs operational team, the Committee were gaining valuable insight into regional economic policy and regeneration that is critical to the future of Walsall.

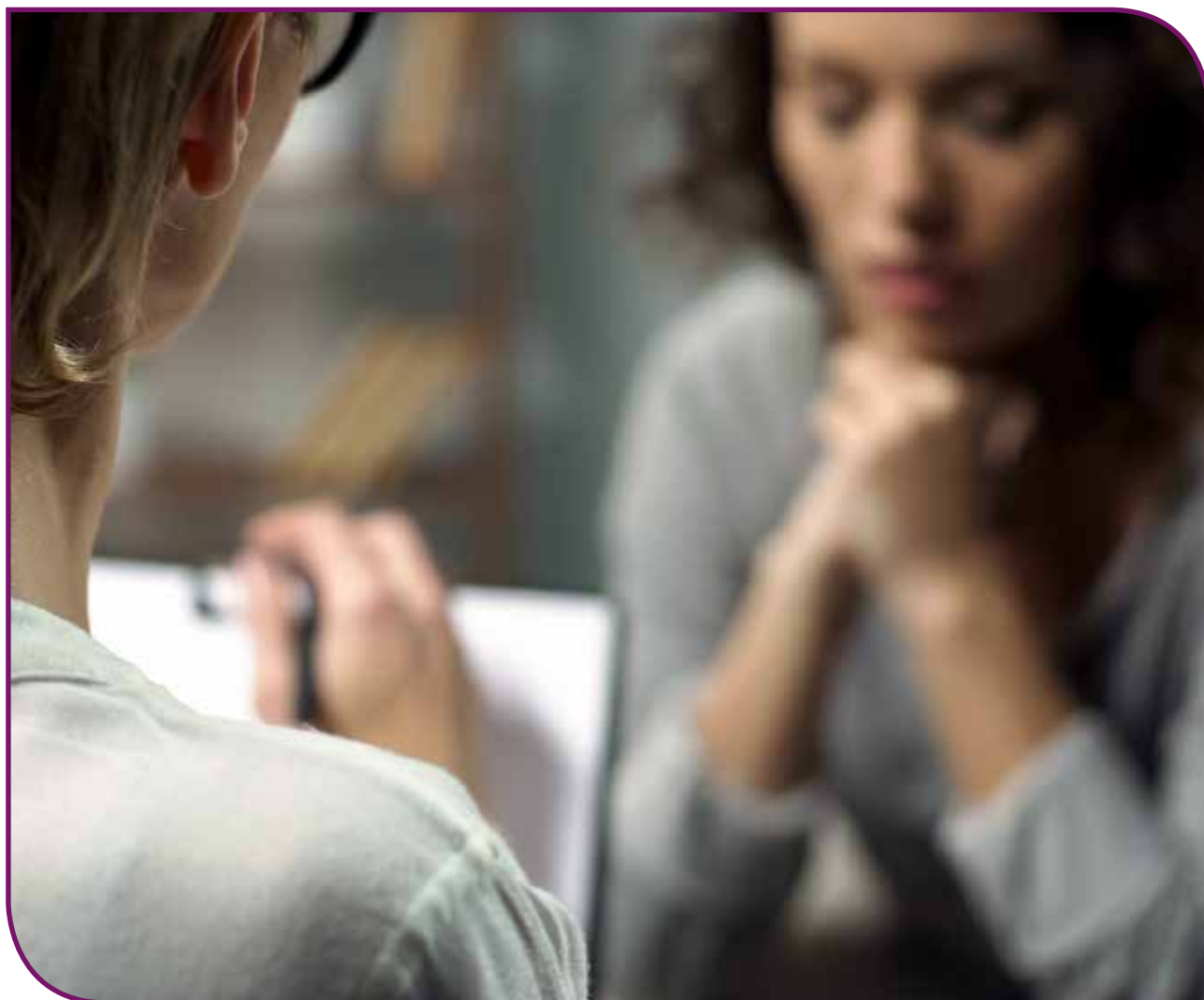
People have increased independence, improved health and positively contribute to their communities

1. Child and Adolescent Mental Health Service (CAMHS)

A key issue for the Children's Services Overview and Scrutiny Committee was the Child Adolescent Mental Health Service (CAMHS). Representatives of the Dudley Walsall Mental Health Trust and Walsall CCG attended to present an overview of the services. Members questioned how parents would access crisis services and, in response to challenge from the committee Members, were assured that, this was an active ongoing piece of work by the Mental Health Trust and the Council. Officers were also challenged on how the transition from childhood to adult services and assurance was provided, that work was underway with partners to ensure that this worked more smoothly in the future. Members were informed that CAMHS had recently achieved 'outstanding' in the caring category with an overall rating of 'good' from the CQC.

How was this item carried out by independent minded councillors who lead and own the scrutiny process?

In response to the item and in recognition of the importance of the service to those who need to access it, Members requested that CAMHS training be provided to elected members in the new municipal year. These training sessions took place on 18th July 2019.





2. Home to school transport for service users: post-16 years of age

The Education Overview and Scrutiny Committee received a report on corporate financial performance – pre-audit outturn position for 2017/18. This confirmed that the pre-audit outturn position for the services under the Committee after mitigating action and use of resources was £0.28m. This was attributed to a number of factors, including the cost of home to school transport – additional demand of £0.19m.

How the Committee enabled the voice and concerns of the public and drove improvement?

In view of the continued overspend position, Members queried the effectiveness of the measures that had been introduced to cut costs. Furthermore, they sought clarification on the costs of home to school transport and requested that information be provided regarding the number of children that had been affected by the cuts to this service which had occurred over the last two years.

The Committee continued to monitor this issue later in year. The Quarter 3 financial monitoring position for 2018/19 summarised the items contained in the Action Plan, with home to school transport being £0.13m overspent. The impact of delays to savings, the implementation of a revised contract and the increase in demand had already absorbed new investment, with the risk that a change in future demand could further increase the costs to be incurred.

In relation to a proposal to cease to provide transport for post-16 students with SEND, the Committee was informed that there had been a six week consultation period when in excess of 3,000 responses had been received and the overwhelming view expressed was that the Council should not proceed with this saving. Furthermore, at the meeting on 14 February 2019, representations were also received by the Committee from the FACE Walsall Group and from members of the public. Accordingly, these views had been taken on board and meaningful discussions held, and the Cabinet had agreed not to proceed with this budget saving in 2019/20. However, the Cabinet also considered that there should be an examination of what help could be made available to these young people to enable them to become more independent when there was the opportunity to do so.

Internal focus, all Council services are efficient

1. Partnerships in Walsall

The Scrutiny Overview Committee perceived that there were numerous, nebulous bodies, whom they, and members of the public, had limited knowledge. Further to this, these partnership bodies were critical to achieving the areas strategic outcomes through the delivery of the Walsall Plan. Therefore, the Committee sought to meet with the bodies to understand:

- Who they were;
- What they did;
- What their achievements were.

During the course of the year the Committee heard from:

- Children and Adults Safeguarding Board;
- Health and Wellbeing Board;
- Safer Walsall Partnership;
- Walsall Economic Board.

This brought the Committee into contact with Portfolio Holders, the local Police Chief Superintendent, the Independent Chair of the Safeguarding Board and local business leaders. These representatives reported on the valuable work they were undertaking and were held to account for their actions by Members.

How did Members drive improvement in public services?

The actions of partnership bodies are critical to delivering the Walsall Plan which cuts across services that affect all Walsall residents. By seeking to understand the role of the boards and their achievements, Members were able to push their community leader role in holding these groups to account.

2. Right for Children Transformation Programme

The Children's Services Overview and Scrutiny Committee were aware that the 'Right for Children Transformation Programme' would underpin the future operation of Children's Services and reviewed detail on the programme. This included the needs assessment and learning which led to the establishment of the following 3 interlinked workstreams to drive the transformation programme. These were:-

1. Prevention
2. Restorative Practice
3. Commissioning

The transformation programme was intended to reduce the circumstances, which lead to children requiring a child protection response by encouraging sustainable change within families and reducing the need for statutory intervention.

The Committee monitored the programme through regular updates and were assured that significant progress had been made to achieve the aims of the transformation programme. Members welcomed the Council's interaction with partners to progress the work streams described.

How did this item provide critical friend challenge to executive policy and decision makers?

Members provided challenge on why demand on services was increasing, the involvement of schools was questioned and assurances were sought that staff consultation had been adequate.



Children have the best possible start and are safe from harm, happy, healthy and learning well

1. Ofsted Working Group

The Children's Services Overview and Scrutiny Committee established a working group, on 26 June 2018, to conduct an in-depth examination of two of the twelve Ofsted recommendations and the responses provided by the Children's Services post Ofsted action plan. This built on the success of the 2017/18 Ofsted Working Group, established by the Education and Children's Services Overview and Scrutiny Committee. The terms of reference were approved by the Committee on 28 January 2019, the working group undertook reviews of two of the Ofsted recommendations:

Recommendation 7: Ensure that managers and social workers have clear guidance and legal advice when placing children in arrangements with friends and family, to ensure that their needs are fully understood and met.

Recommendation 9: Take steps to ensure that care plans for all children who have a plan for permanence progress within the child's timescale to avoid children experiencing delays, including the identification and support of children who could be placed in foster to adopt arrangements.

How did the working group drive improvement in public services / provides critical friend challenge to executive policy and decision makers?

The Ofsted Working Group held six meetings and met with over twenty witnesses. The working group's findings, conclusions and recommendations were set out in a report that was approved by the committee on 25 April 2019. The report was presented to Cabinet on 19 June 2019.

2. Pupil place planning and school expansion

The Education Overview and Scrutiny Committee considered a report on the school expansion programme that set out the Council's statutory duty to provide sufficient school places for the children of Walsall. Following a request from the Education and Skills Funding Agency (ESFA), this programme had been revised with reference to ESFA planning data/forecasts and the Cabinet had approved modifications to the programme. This included revoking the decision to expand two schools, deferring the implementation date for the expansion of five schools from 2019 to 2020 and making use of temporary modular units to meet the demand to create school places.

How the Committee enabled the voice and concerns of the public and drove improvement?

The Committee was informed that the programme had been subject to ESFA scrutiny, with the expectation being that greater efficiencies and value-for-money would be achieved. It was noted that year-on-year, the need for school places would be reviewed, and a review of the demand for places for children with special educational needs and disabilities (SEND) and the current school estate formed part of the Cabinet's recommendations.

Having regard to the needs of children and young people, and the pressures on school places, it was noted by Members that there were areas of the Borough in which it had becoming increasingly difficult for parents to find school places for their children.

The Committee requested that a further report be made, and the information provided detailed the school admission arrangements, set out the operation of the process in Walsall and gave examples of good practice. In addition, the Committee requested that the views of the Local Government Association on these matters be sought and, accordingly, a letter from the Chair was sent to the LGA on behalf of the Committee.

3. New Leaf Inclusion Centre

In the light of an 'inadequate' outcome of the Ofsted inspection of the New Leaf Innovation Centre conducted in April 2018, the Education Overview and Scrutiny Committee received a report detailing how the Council was working with the Centre to address the issues raised in the inspection report. As in all such cases, a Direct Academy Order was placed on the Centre, which required the Council to work with the Regional Schools Commissioner to identify a suitable academy sponsor and to support the transfer.

How the Committee enable the voice and concerns of the public and drove improvement?

During discussion, the Committee noted the steps that had been taken to implement the Statement of Action that had been agreed with Ofsted. This included providing support for the Centre's governing body, appointing an interim Head teacher and organising a move to more suitable accommodation. The Committee resolved that a further progress report should be provided and this was presented to the meeting held on 10 January 2019. At this meeting, officers confirmed that Ofsted had undertaken a monitoring visit in October 2018, and the subsequent report from Ofsted had confirmed that it was satisfied with the actions taken to address the previous instability and to ensure the safety and welfare of the pupils at the Centre.



4. Working group on SEND, pupil exclusions and children not accessing education

A report on a review of the effectiveness of the Council's SEND practice prior to its inspection by Ofsted being undertaken was made to the Education Overview and Scrutiny Committee. This summarised the review, identified a number of strengths and areas for development, and provided an action plan. The report was accompanied by a presentation on the preparedness of the Council and health agencies for the inspection and set out priorities and recommendations.

How independent minded councillors drove improvement?

Members determined that a working group should be established to conduct an in-depth examination on the provision of services in Walsall for children with SEND, together with the issues of pupil exclusions and children not accessing education.

Several meetings of the working group were held and evidence was gathered. Representatives from schools, the Walsall Schools Forum and from within Children's Services were invited to attend meetings of the group and were interviewed. The findings, conclusions and recommendations of the working group were set out in a report that was received by the Committee on 26 March 2019. The recommendations were as summarised below:

- Ensuring compliance with the statutory timescale of twenty weeks required for the completion of the SEND process.
- Utilising the 'schools causing concern' processes to reduce the practice in some schools of 'off-rolling' that is detrimental to the children and other schools affected.
- Sharing good practice relating to SEND provision, with school governors being encouraged to attend training organised by the Council in relation to the SEND.
- Encouraging the implementation and quality assurance of nurture groups so that their operation can be introduced and delivered in Walsall's schools.
- Addressing the shortage of qualified professionals in roles crucial to the provision of SEND support by encouraging applications from suitably qualified persons.
- Incorporating these findings, conclusions and recommendations into the action plan to be prepared following Ofsted inspection of Walsall's SEND provision.

This report was presented to the Cabinet on 24 April 2019.

Communities are prospering and resilient with all housing needs met in safe and healthy places that build a strong sense of belonging and cohesion

1. Private Rented Sector Housing and Selective Licensing Working Group

The Economy and Environment Overview and Scrutiny Committee focused on the standards of housing in the private rented sector CPRS with particular interest in selective licensing options.

This working group successfully engaged with partner and charitable organisations, landlord groups and local authorities. It was highlighted that whilst the housing composition varied across Walsall, the private rented sector represented over 15,000 properties in the Borough. The working group recognised that housing standards were mixed in the sector which resulted in challenges for the Council in uplifting standards and to ensure that landlords provided a better standard of accommodation. Members noted the resource limitations within the Housing Standards Team and the challenges in locating problematic landlords. Selective Licensing was noted as a potential tool to improve housing standards within the Borough. The working group found that licensing schemes success varied throughout the country with the majority of schemes requiring significant start-up costs. With this in mind, the working group echoed concerns raised by Karen Buck, MP for Westminster North, which identified that the local authorities most actively tackling standards in the PRS had 6 housing standards staff for every 10,000 households in the PRS. It was identified that using this equation, the Council would need an extra 6 members of staff within the housing standards service.

The working group considered accreditation options, which were found to encourage higher standards of accommodation within the sector. In addition, accreditation was found to provide opportunities for landlords to receive support with incentives and achieve recognition of good standards in the sector. However, establishing accreditation schemes required high levels of resource and significant financial support. The City of Wolverhampton Council's accreditation scheme 'Rent with Confidence' was found to be an excellent example of a scheme which encourages landlords to improve the standards of PRS housing in the City. The scheme provided financial incentives for five-star landlords and ensured compliant standards with regular inspections. The working group recommended that the Council approach the City of Wolverhampton Council regarding the establishment of a partnership arrangement to participate in the Rent with Confidence accreditation scheme.

The working group also identified and heard the following points:

- Concerns were raised from landlords and organisations about the problems of dealing with tenant waste without a waste transfer licence.
- Landlords should be encouraged to issue written tenancy agreements, as opposed to verbal agreements, which are difficult to enforce when there is a dispute.
- Concerns were raised about the number of local authorities relocating tenants to live in accommodation in other areas of the country, including relocating such tenants into the Borough.

Upon deliberation the Committee resolved that a meeting of Council consider the report's recommendations prior to consideration by the Cabinet.

How has this item drove improvement?

The working group led an effective investigation into the standards in the PRS and invited key witness to assist the group with their discussions. The group established a number of recommendations to support improvements in the sector. One recommendation proposed introducing a Selective Licensing scheme in Walsall Town Centre and Willenhall with an option for a discounted fee for accredited landlords to improve standards for tenants living in PRS accommodation.

2. Young People – knife crime and criminal exploitation

The Children’s Services Overview and Scrutiny Committee heard evidence from Council Officers, the Superintendent of West Midlands Police and a Youth of Walsall representative in relation to why a young person may carry a knife and how those young people at risk of exploitation were identified by authorities. Members scrutinised how the Council, and its partners, responded to the issue of knife crime and associated criminal exploitation of young people.

A Youth of Walsall representative presented on the work completed by the organisation on knife crime including the campaign ‘Real Knives, Real Lives’. This project was being funded by the Active Citizens Fund, from the Office of the West Midlands Police and Crime Commissioner.

How did this item provide critical friend challenge to executive policy and decision makers?

The Committee sought assurance that efforts to reduce knife crime were effective and that results were effective in reducing the number of knives on the streets. The Committee recommended that the Local Authority work more closely with all schools to improve communication on such issues and ensure that all knife crime incidences were recorded and included in data held by the Council, and West Midlands Police. This was in response to concern, that the Council and the Police did not record the data relating to knife crime in schools.



3. Homelessness and street begging

Like other areas, Walsall has instances of rough sleeping and street begging. Therefore, the Scrutiny Overview Committee sought reassurance on what steps were being taken to address these issues.

The Committee learned that the numbers of rough sleepers in the borough were declining so it was important to differentiate rough sleepers and street beggars. The Committee was pleased to learn about the valuable work being undertaken by the Night Shelter which provided a safe place to sleep for rough sleepers during the winter. Importantly the Night Shelter provided an opportunity to engage rough sleepers. During 2018/19, 1232 rough sleepers were supported, of whom, 43 had now secured accommodation through 'Housing First'. Because of schemes like this Walsall has actually seen a reduction in rough sleepers whereas nationally the figures for rough sleepers had increased by 2%.

The Committee discussed the proliferation of street begging with the Chief Superintendent of Police in Walsall. Members challenged the approach to managing street begging and sought to understand the Police's position. Substance misuse was noted as one cause along with the generosity of local people. The possibility of introducing alternative forms of giving was raised and Members were supportive of this being taken forward.

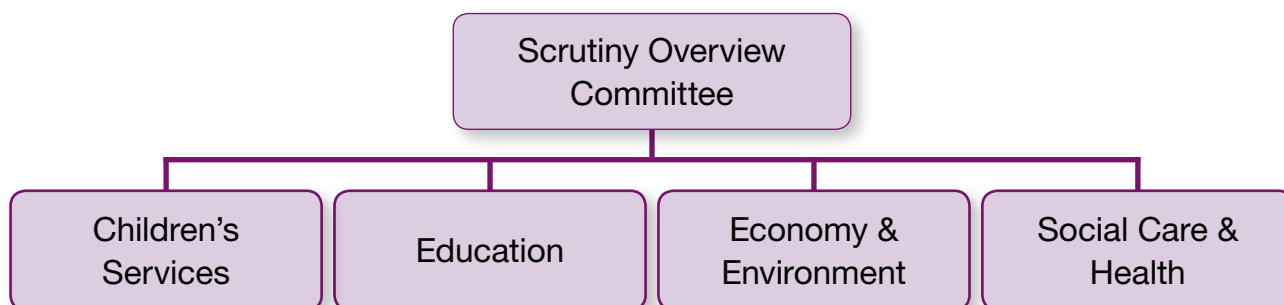
How did the Committee provide 'critical friend' challenge to executive policy makers and decision-makers?

By investigating these issues Members were able to understand the actual cause of the challenges in local high streets. This included understanding that rough sleepers were not necessarily street beggars which was supported by the achievements of the Housing First programme and the Night Shelter. By discussing these issues Members were able to challenge service providers and policy makers directly on what they were doing to support local vulnerable people and reduce anti-social behaviour.



Looking Forward 2019/20

There are five Overview and Scrutiny Committees following the revision of the remits in 2018 of all Committees to enhance the focus on the Corporate Plan. The current committee structure is as follows:



a. Scrutiny Overview Committee

The Scrutiny Overview Committee is an overarching body that includes the Chairs of all Overview and Scrutiny Committees. It oversees the corporate plan and Council-wide transformation and finance as well as the Council's Resources and Transformation Directorate. It is also the Council's nominated crime and disorder committee.

Issues and topics planned to be considered by the Committee during the next year are:

- Scrutiny guidance
- Budget monitoring and budget setting 2020/21
- Walsall Proud Programme
- Strategic plan monitoring – Corporate Plan and Walsall Plan
- Workforce incidents
- Resilient communities including community associations
- Activity reports from scrutiny chairs

b. Children's Services Overview and Scrutiny Committee

The Children's Services Overview and Scrutiny Committee is focussed all aspects and service relating to children and young people (excluding education and learning).

Issues and topics planned to be considered by the Committee during the next year are:

- Exploitation
- Youth Justice improvement
- Right for Children Transformation
- Budget monitoring and 2020/21 budget setting
- Preventing children coming into care
- Big conversation
- Performance monitoring
- Regional Adoption Agency
- Safeguarding of children and young people with disabilities and transition services to adulthood
- MASH

c. Economy and Environment Overview and Scrutiny Committee

The Economy and Environment Overview and Scrutiny Committee is focussed on all aspects and services relating to the Economy and Environment. It is also the Council flood risk management committee.

Issues and topics planned to be considered by the Committee during the next year are:

- Employment, Growth and Skills
- Presentation from West Midlands Combined Authority
- Walsall Market Update
- Outcome of the SPRINT (Rapid Transport) Consultation
- Walsall Proud Programme
- Air Quality
- Fuel poverty and housing insulation in Social and PRS housing Working Group
- Unauthorised Encampments Working Group
- Waste strategy
- Rail Improvements
- Town Centre Masterplan and District Centres Update

d. Education Overview and Scrutiny Committee

The Education Overview and Scrutiny Committee was created to enhance the capacity for scrutiny of education issues for children and young people. Adult education is the responsibility of the Economy and Environment Overview and Scrutiny Committee.

Issues and topics planned to be considered by the Committee during the next year are:

- Jane Lane School
- Teacher supply and recruitment
- Financial monitoring and budget setting 2020/21
- SEND and written statement of action
- Education, Health and Care Plans
- Right for Children Transformation Programme
- Ofsted inspections
- Educational attainment
- School place/pupil planning
- School funding
- SEN Funding
- Post 16 provision
- Joint commissioning
- Committee relationships with parents
- Access and Inclusion

e. Social Care and Health Overview and Scrutiny Committee

The Social Care and Health Overview and Scrutiny Committee is the statutory health scrutiny committee and oversees social care and health matters including the NHS.

Issues and topics planned to be considered by the Committee during the next year are:

- Wellbeing
- Finance
- Access to primary care
- Partnerships and integration
- Mental health
- Hospital services and community care
- Public health
- NHS consultations – dental services



Resources and Transformation

Legal and Democratic Services

Walsall Council

Civic Centre

Darwall Street

Walsall

WS1 1TP

Web: www.walsall.gov.uk