

Health and Wellbeing Board – 9 September 2013

Review of Public Health (PH) plans against Health and Wellbeing Strategy (HWBS) and assessment of progress to date

1. Purpose

The main purpose of this paper is:

- 1.1 To show the Health and Wellbeing Board how the Public Health delivery plans contribute to the Health and Wellbeing Strategy shown in appendix 1
- 1.2 To show the Health and Wellbeing Board what delivery programmes, shown in appendix 2, are in place in public health to deliver the public health outcomes of the Health and Wellbeing Strategy
- 1.3 To show the Health and Wellbeing Board what progress we have made to date against the Public Health Outcomes shown in the PH Framework in appendix 3.

2. Recommendations

- 2.1 That the Health and Wellbeing Board considers this paper and appendices and agrees that Public Health have taken proper account of the Joint Health and Wellbeing Strategy in their delivery plans.
- 2.2 That the Health and Wellbeing Board notes what progress has been made, to date, against the Public Health Outcomes

3. Report Detail

- 3.1 The HWB Board has a duty to provide an opinion on whether the Public Health plans have taken proper account of the Joint Health and Wellbeing Strategy.
- 3.2 A review has been undertaken and attached as appendix 1. This self-assessment shows that there is close alignment between the public health plans and the HWB strategy and that the actions being taken support delivery of the recommendations for each section of the HWB strategy.
- 3.3 In the opinion of the Director of Public Health, the PH delivery plans (appendix 2) take proper account of the Joint Health and Wellbeing Strategy as referenced within the review in appendix 1.

- 3.4 Within appendix 3, all the public health indicators in each domain are listed. The information can also be accessed online at the following location: - <http://www.phoutcomes.info/>
- 3.4 The Public Health England reports on Walsall are presented in a number of ways. The main successes and areas for improvement from the Public Health Outcomes Framework are highlighted in the table below. Many of these indicators shown in the table below will be analysed in more depth with the refresh of the Walsall Joint Strategic Needs Assessment, and the Health and Wellbeing Strategy will be updated for 2014/15.

Table 1 - the Successes and areas for Improvement for Walsall from the Public Health Outcomes Framework Indicators

Successes in Walsall	Area for Improvement in Walsall
Residents Killed or Injured on the Roads	% of Children in Poverty
Violent Crime – Hospital Admissions for Violence	% of 16 to 18 Year Olds Not in Education or Training
Statutory Homelessness – Households in Temporary Accommodation	% of Days Lost due to Sickness Absence
Hospital Admissions caused by unintentional / deliberate injuries in children and young people	The % of population affected by noise
Successful completion of drug treatment – non opiate users	Breastfeeding initiation / Prevalence
Cancer Screening Coverage – Breast Cancers	Low birth weight of term babies
Cancer Screening Coverage – Cervical Cancers	Smoking Status at time of delivery
NHS Health checks – Take up	% Prevalence of Diabetes
NHS Health checks – Offered	Under 18 Conception Rate
Childhood Vaccination Coverage Rates	Excess Weight in Children
Suicide Rates	% of inactive adults
Preventable Sight Loss – Age Related Macular Degeneration (>65 Years)	Self Reported Wellbeing – Low Self Esteem
Preventable Sight Loss – Sight Loss Certifications	Chlamydia Prevalence Rates
	Infant Mortality Rates
	Premature Mortality from Cardiovascular Diseases
	Premature Mortality from Cancer
	Premature Mortality from Respiratory Disease

Author

Dr Isabel Gillis
 Director of Public Health
 Public Health, Walsall

☎ 653743

✉ gillisi@walsall.gov.uk

Review of public health delivery plans against Joint Health and Wellbeing Strategy (JHWS)

The Health and Wellbeing Board has the following duties and powers:

- Duty to encourage integrated working between commissioners of health services and commissioners of social care services
- Power to encourage close working (in relation to wider determinants of health):
 - Between itself and commissioners of health related services
 - Between commissioners of health services or social care services and commissioners of health-related services
- Duty to provide opinion on whether a commission plan from either the CCG, Local Authority, NHS Commissioning Board or Local Healthwatch has taken proper account of the Joint Health and Wellbeing Strategy

The commissioning plan of which organisation/body is being reviewed?.

Public Health, Walsall Council.....

Name and role of person undertaking review:

Isabel Gillis, Director of Public Health

Section within JHWS	How does the commissioning plan contribute to achieving the ambition and key priorities within this section?	Where, in the commissioning plan is this referenced? (page no, section etc)	Gaps identified and future plans
Section 5: Wellbeing in Walsall	<ul style="list-style-type: none"> ➤ Public mental wellbeing and health promotion including 5 ways to wellbeing ➤ Increasing levels of physical activity in the local population 	<p>Appendix 2, page3</p> <p>Appendix 2, page 2</p>	<p>Gaps will be identified during the refresh of the JSNA and then steps taken to fill gaps and mitigate against risk</p>

<p>Section 6: Give every child the best start in life</p>	<ul style="list-style-type: none"> ➤ Perinatal and infant mortality reduction: <ul style="list-style-type: none"> • Breast feeding uptake • Smoking in Pregnancy • Domestic Violence • Population level interventions to reduce and prevent birth defects ➤ Healthy weight initiatives eg: MAEYS ➤ National Child Measurement Programme ➤ Supporting, reviewing and challenging delivery of key public health funded and NHS delivered services such as immunisation and screening programmes ➤ Increasing levels of physical activity in the local population ➤ Alcohol and drug misuse services 	<p>Appendix 2, page 1</p> <p>Appendix 2, page 2</p> <p>Appendix 2, page 2</p> <p>Appendix 2, page 5</p> <p>Appendix 2, page 2</p> <p>Appendix 2, page 6</p>	<p>Gaps will be identified during the refresh of the JSNA and then steps taken to fill gaps and mitigate against risk</p>
<p>Section 7: Enable all children and young people to maximise their capabilities and have control over their lives</p>	<ul style="list-style-type: none"> ➤ Healthy Child Programme: children and young people aged 5-19 ➤ Sexual health programme ➤ National Child Measurement Programme ➤ Healthy weight initiatives eg: Food Dudes, Fun 4Life. ➤ Physical exercise initiatives eg: Free swim for u16s 	<p>Appendix 2, page 1</p> <p>Appendix 2, page3</p> <p>Appendix 2, page 2</p> <p>Appendix 2, page 2</p> <p>Appendix 2, page 2</p>	<p>Gaps will be identified during the refresh of the JSNA and then steps taken to fill gaps and mitigate against risk</p>

	<ul style="list-style-type: none"> ➤ Comprehensive sexual health services ➤ Alcohol and drug misuse services ➤ Supporting, reviewing and challenging delivery of key public health funded and NHS delivered services such as immunisation and screening programmes ➤ Local initiatives that reduce public health impacts of environmental risks eg: disease and injury 	<p>Appendix 2, page 4</p> <p>Appendix 2, page 6</p> <p>Appendix 2, page 5</p> <p>Appendix 2, page 5</p>	
Section 8: Employment and improving employability	<ul style="list-style-type: none"> ➤ Health at Work Programme: <ul style="list-style-type: none"> • Workplace and community health checks • NHS health checks • MECC and referral to specialist lifestyle services 	Appendix 2, page 3	Gaps will be identified during the refresh of the JSNA and then steps taken to fill gaps and mitigate against risk
Section 9: Creating and developing healthy and sustainable places and communities	<ul style="list-style-type: none"> ➤ Locally-led nutrition initiatives ➤ Increasing levels of physical activity in the local population ➤ Tobacco control and smoking cessation services ➤ Alcohol and drug misuse services ➤ Local initiatives that reduce public health impacts of environmental risks eg: A* Stars(travel and road safety scheme) ➤ The local authority role in dealing with 	<p>Appendix 2, page 2</p> <p>Appendix 2, page 2</p> <p>Appendix 2, page 3</p> <p>Appendix 2, page 6</p> <p>Appendix 2, page 2 and page 5</p> <p>Appendix 2, page 5</p>	Gaps will be identified during the refresh of the JSNA and then steps taken to fill gaps and mitigate against risk

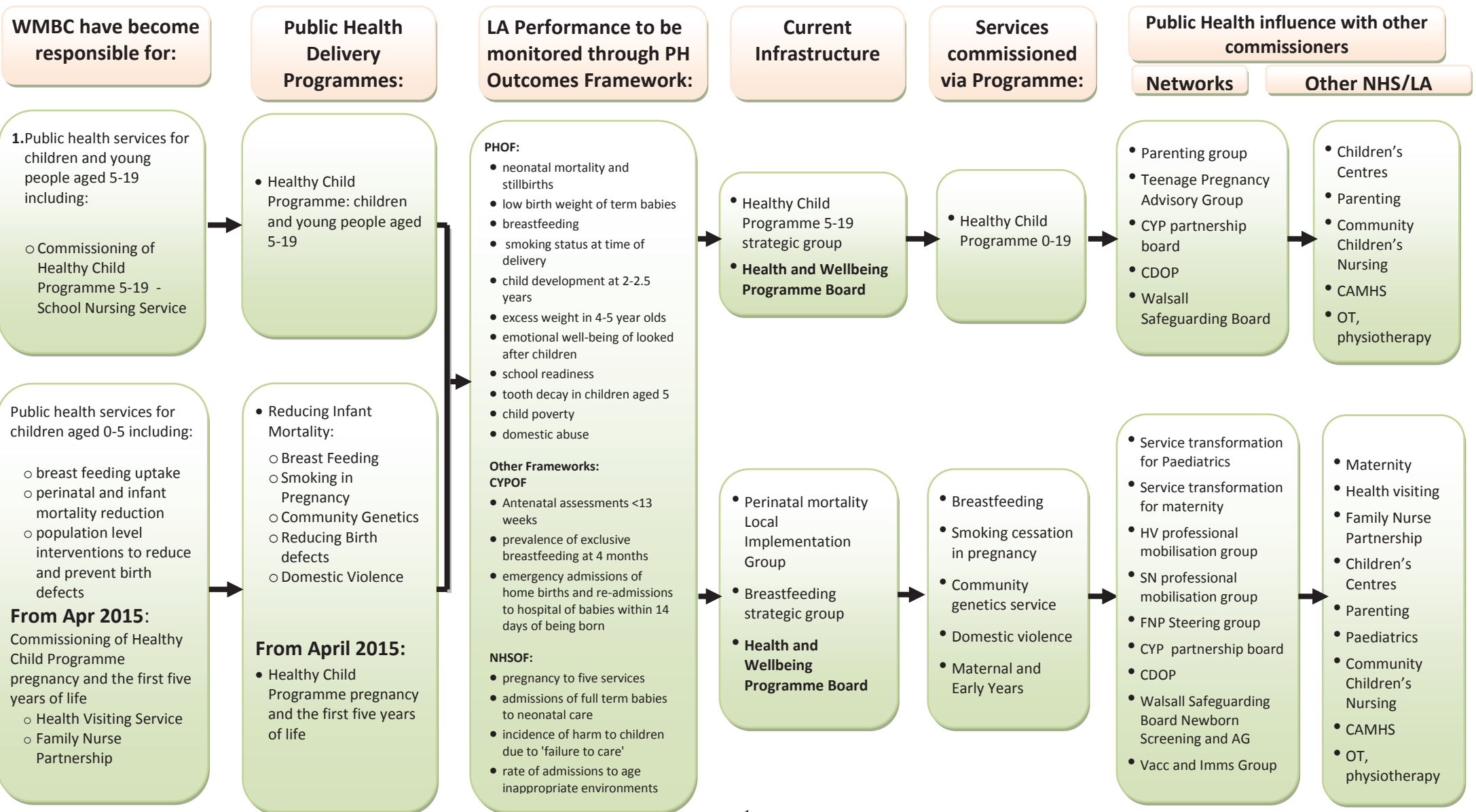
	<p>health protection incidents, outbreaks and emergencies</p> <ul style="list-style-type: none"> ➤ Community health champions – working with lifestyle services to promote healthy lifestyles 	<p>Appendix 2, page 3</p>	
<p>Section 10: Improving health and wellbeing through healthy lifestyles: Making ‘healthier choices easier’</p>	<ul style="list-style-type: none"> ➤ Interventions to tackle obesity such as community lifestyle and weight management services ➤ Men’s health project ➤ Increasing levels of physical activity in the local population ➤ Tobacco control and smoking cessation services ➤ NHS Health Checks Programme ➤ Comprehensive sexual health services including: <ul style="list-style-type: none"> • testing and treatment for sexually transmitted infections • contraception outside of the GP contract • sexual health promotion and disease prevention eg sex education in schools, SAFE project, HIV information, men’s health. ➤ Alcohol and drug misuse services eg: <ul style="list-style-type: none"> • Young people’s and adult substance misuse treatment • Needle exchange • GP services 	<p>Appendix 2, page 2</p> <p>Appendix 2, page 4</p> <p>Appendix 2, page 2</p> <p>Appendix 2, page 3</p> <p>Appendix 2, page 3</p> <p>Appendix 2, page 4</p> <p>Appendix 2, page 6</p>	<p>Gaps will be identified during the refresh of the JSNA and then steps taken to fill gaps and mitigate against risk</p>

	<ul style="list-style-type: none"> • Safeguarding training • Police IDOM co-ordinator • Money advice <p>➤ Behavioural and lifestyle campaigns to prevent cancer and long-term conditions</p>	<p>Appendix 2, page 5</p>	
<p>Section 11: Reducing the burden of preventable disease, disability and death</p>	<ul style="list-style-type: none"> ➤ NHS Health Checks Programme ➤ Behavioural and lifestyle campaigns to prevent cancer and long-term conditions ➤ Local initiatives to reduce excess deaths as a result of seasonal mortality ➤ Supporting, reviewing and challenging delivery of key public health funded and NHS delivered services such as immunisation and screening programmes ➤ The local authority role in dealing with health protection incidents, outbreaks and emergencies ➤ Local initiatives that reduce public health impacts of environmental risks eg: disease and injury ➤ Targeted initiatives eg: <ul style="list-style-type: none"> • Info and advice within GP surgeries • Services to new (migrant) communities 	<p>Appendix 2, page 3</p> <p>Appendix 2, page 5</p> <p>Appendix 2, page 5</p> <p>Appendix 2, page 5</p> <p>Appendix 2, page 5</p> <p>Appendix 2, page 5</p> <p>Appendix 2, page 5</p>	<p>Gaps will be identified during the refresh of the JSNA and then steps taken to fill gaps and mitigate against risk</p>
	<p>➤ NHS Health Checks Programme</p>	<p>Appendix 2, page 3</p>	<p>Gaps will be identified during</p>

<p>Section 12: Healthy ageing and independent living</p>	<ul style="list-style-type: none"> ➤ Behavioural and lifestyle campaigns to prevent cancer and long-term conditions eg Dental health programme ➤ Local initiatives to reduce excess deaths as a result of seasonal mortality ➤ Supporting, reviewing and challenging delivery of key public health funded and NHS delivered services such as immunisation and screening programmes ➤ The local authority role in dealing with health protection incidents, outbreaks and emergencies ➤ Local initiatives that reduce public health impacts of environmental risks eg: disease and injury <ul style="list-style-type: none"> • Falls prevention • BME mental health and wellbeing • Health/housing partnership 	<p>Appendix 2, page 5</p> <p>Appendix 2, page 5</p> <p>Appendix 2, page 5</p> <p>Appendix 2, page 5</p> <p>Appendix 2, page 5</p>	<p>the refresh of the JSNA and then steps taken to fill gaps and mitigate against risk</p>
--	--	---	--

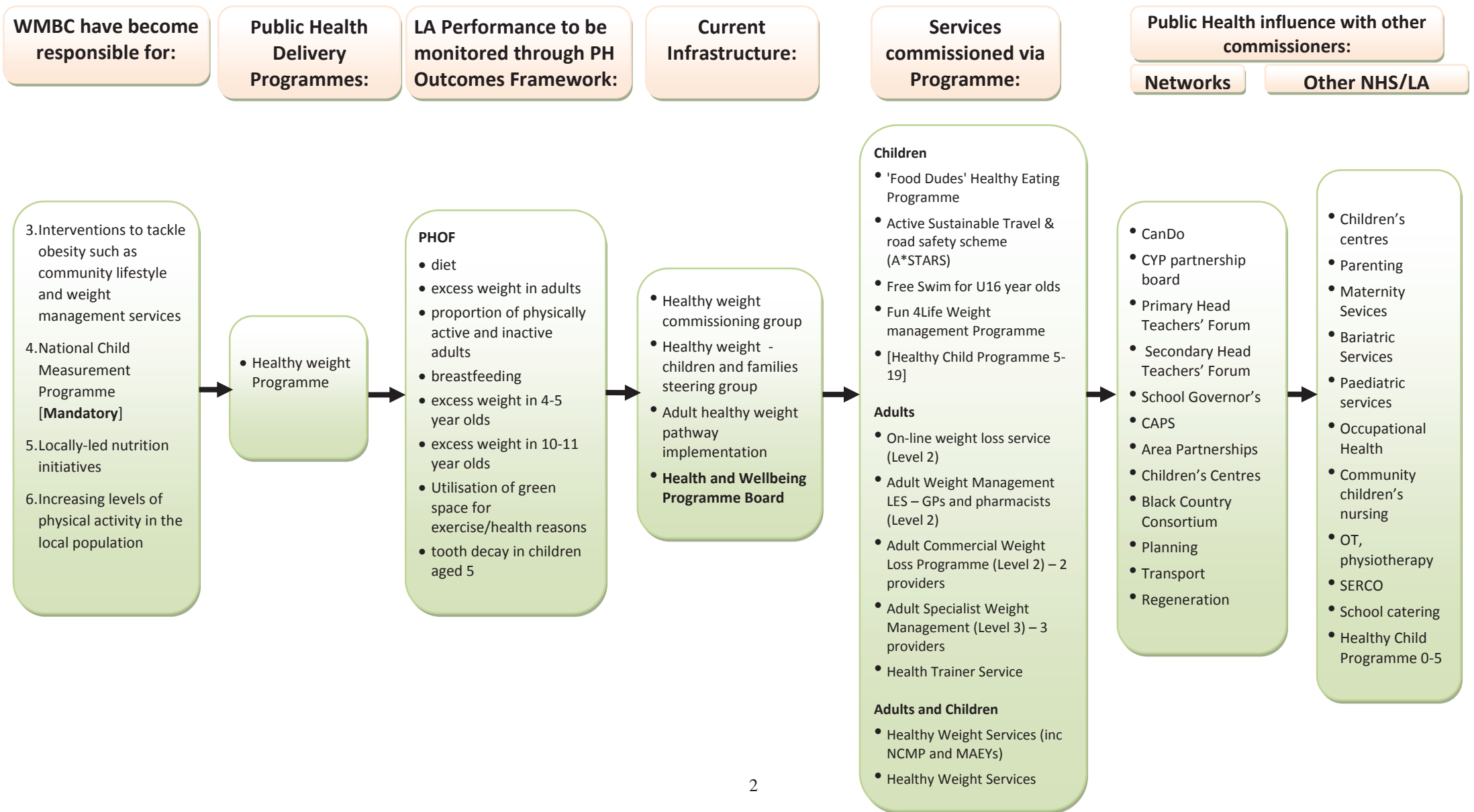
A: Children and Young People

- JSNA Chapter 1: Give every child the best start in life
- JSNA Chapter 2: Enable all children, young people to maximise their capabilities and have control over their lives



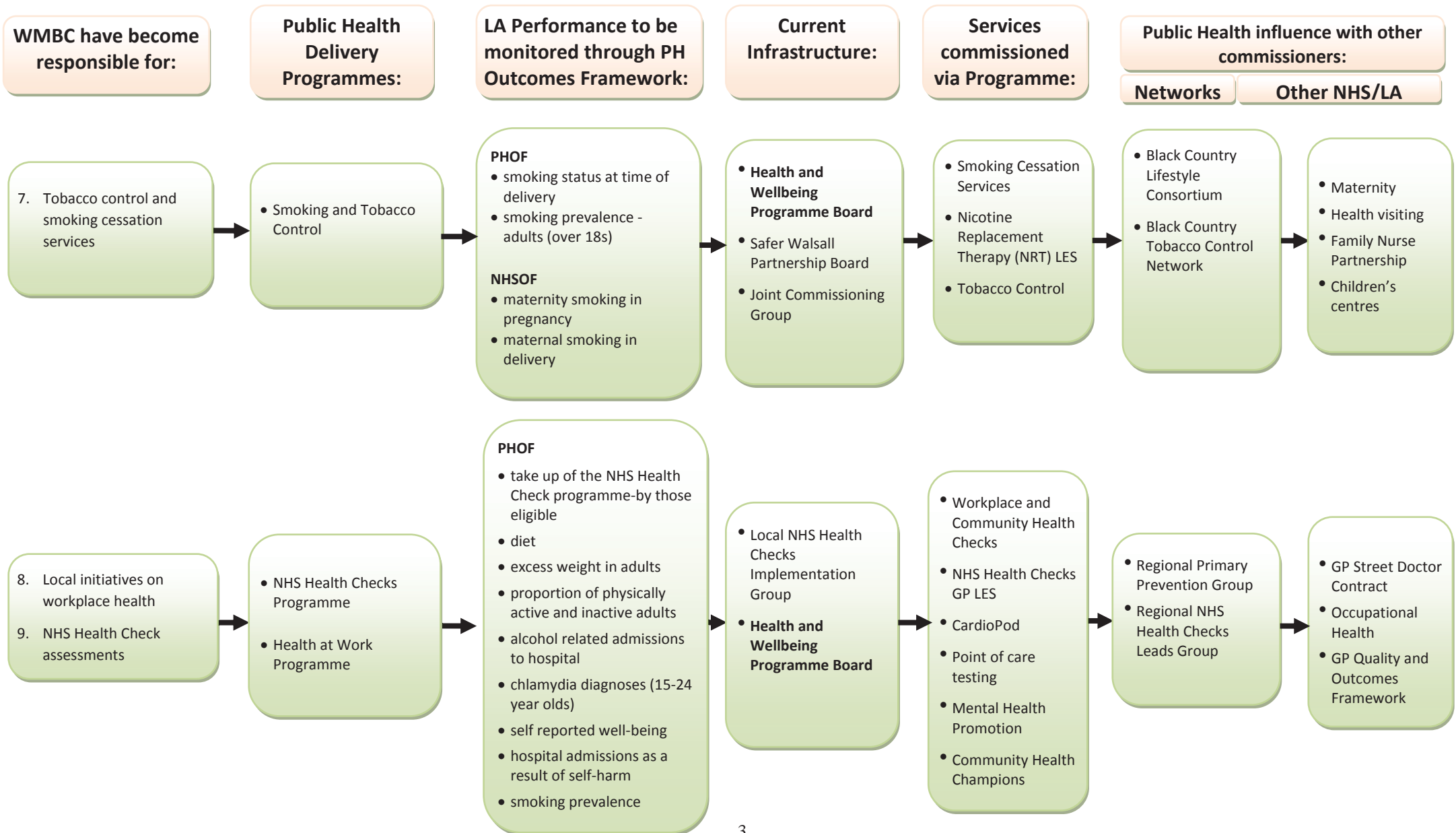
B: Improving Health

JSNA Chapter 6: Improving health and wellbeing through healthy lifestyles - making healthier choices easier



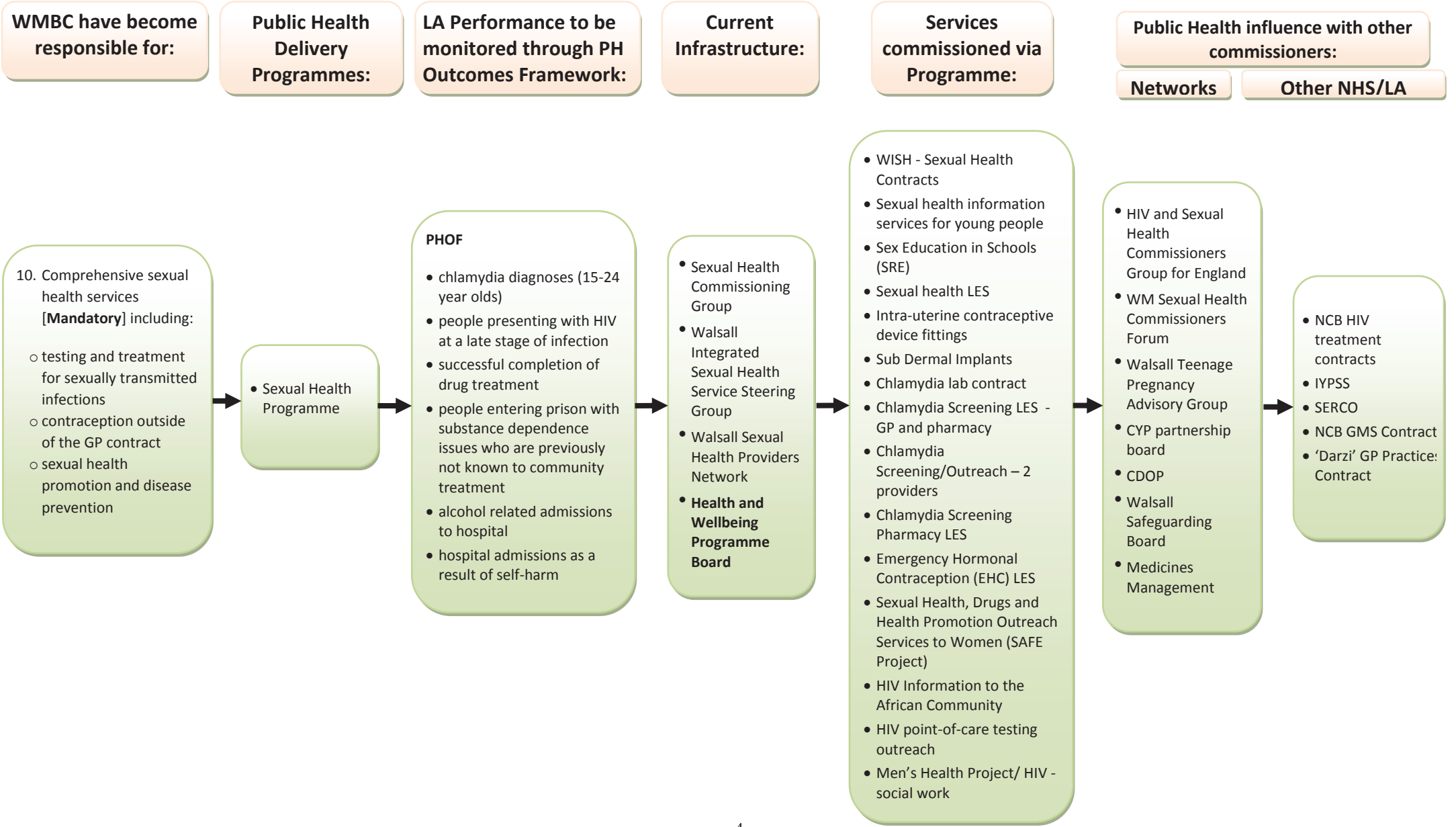
B: Improving Health (contd.)

JSNA Chapter 6: Improving health and wellbeing through healthy lifestyles - making healthier choices easier



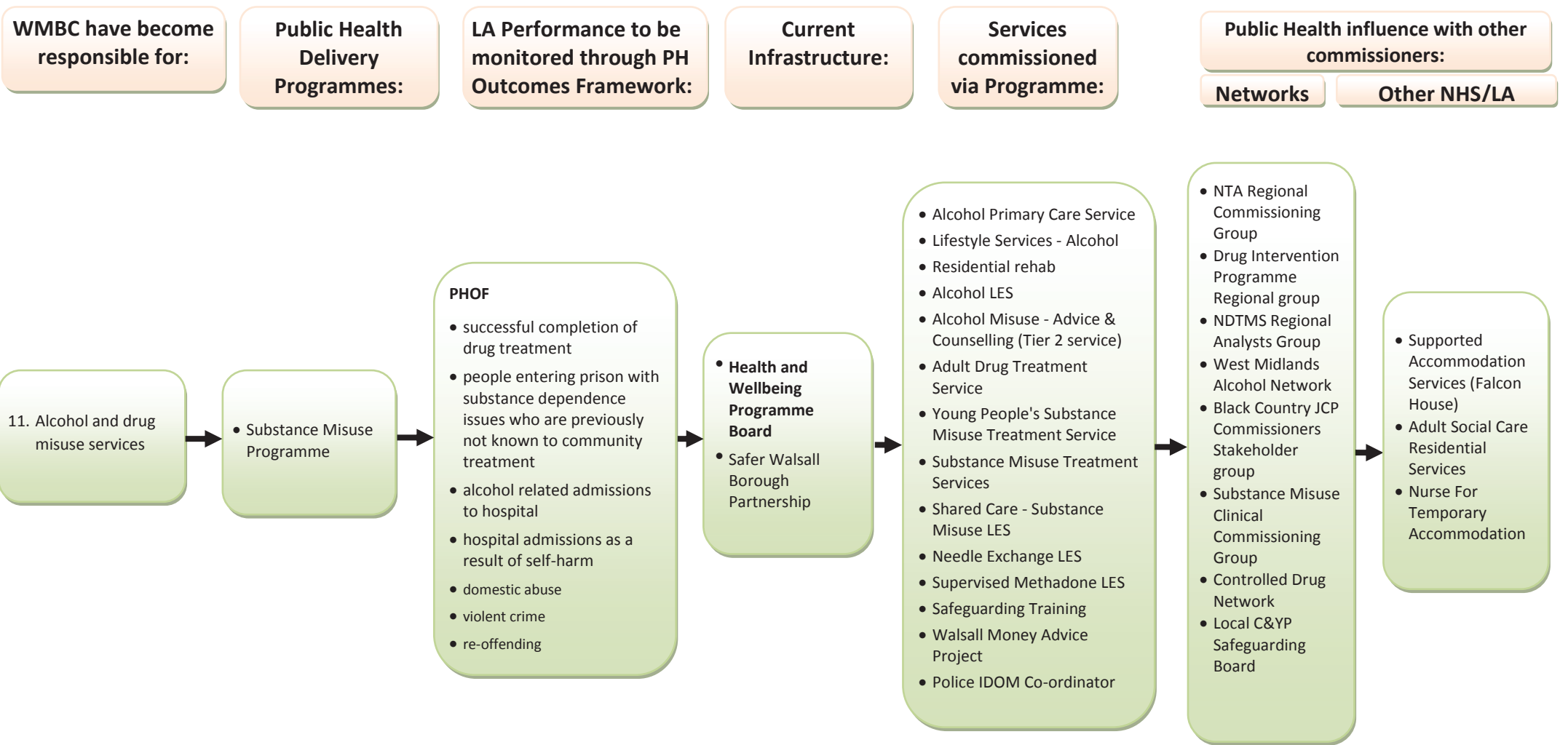
B: Improving Health (contd.)

JSNA Chapter 6: Improving health and wellbeing through healthy lifestyles - making healthier choices easier



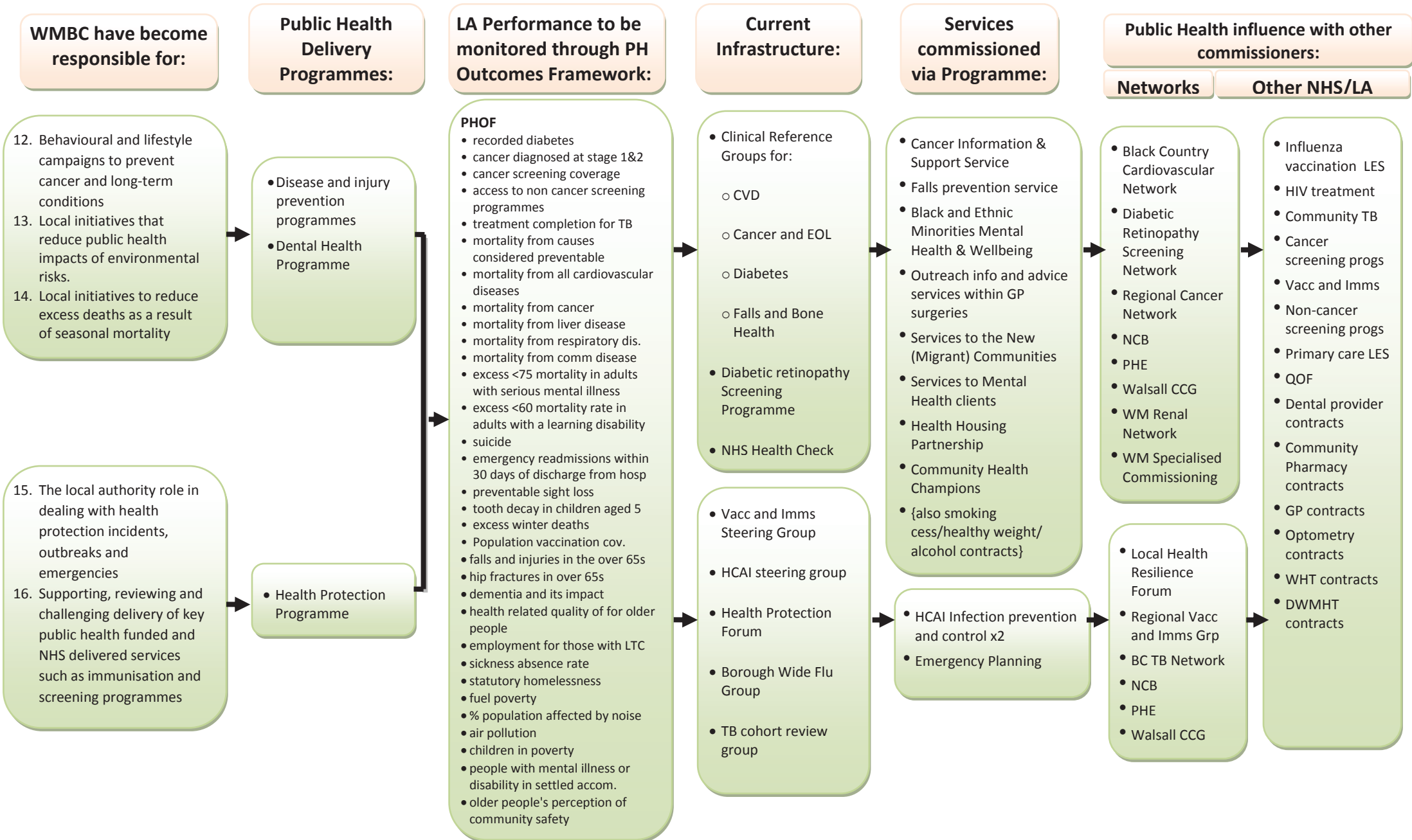
B: Improving Health (contd.)

JSNA Chapter 6: Improving health and wellbeing through healthy lifestyles - making healthier choices easier



C: Prevention of Disease

JSNA Chapter 7: Reducing the burden of preventable diseases, disability and death by strengthening the role and impact of ill health prevention





Walsall

Introduction

The Public Health Outcomes Framework [Healthy lives. healthy people: Improving outcomes and supporting transparency](#) sets out a vision for public health, desired outcomes and the indicators that will help us understand how well public health is being improved and protected. The framework concentrates on two high-level outcomes to be achieved across the public health system, and groups further indicators into four 'domains' that cover the full spectrum of public health. The outcomes reflect a focus not only on how long people live, but on how well they live at all stages of life.

This profile currently presents data for the first set of indicators at England and upper tier local authority levels, collated by Public Health England.

The profile allows you to:

- Compare your local authority against other authorities in the region
- Benchmark your local authority against the England value

Public Health Outcomes Framework baseline data will be revised and corrected in accordance with the [general DH statistical policy on revisions and corrections](#).

Contents

Spine charts

Wider determinants of health	Page 2
Health improvement	Page 3
Health protection	Page 4
Healthcare and premature mortality	Page 5

Tartan Rugs

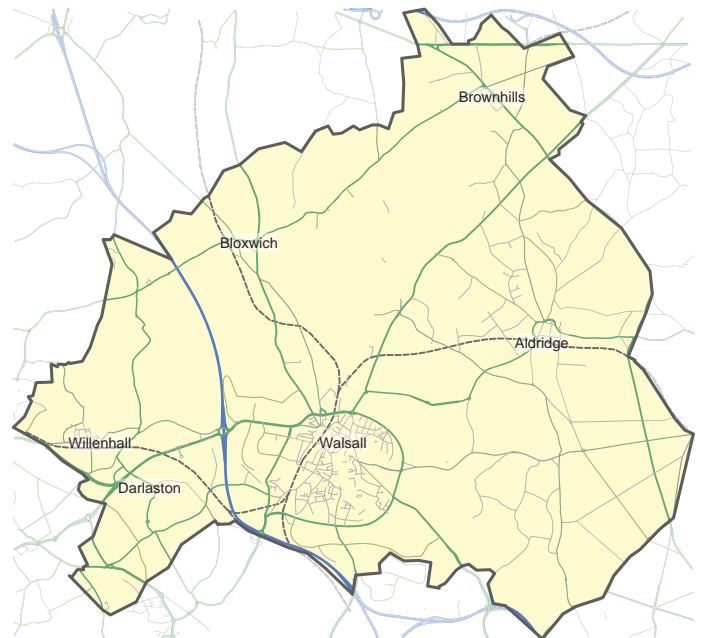
Wider determinants of health	Page 6
Health improvement	Page 7
Health protection	Page 8
Healthcare and premature mortality	Page 9

Summary Charts

Wider determinants of health	Page 10
Health improvement	Page 12
Health protection	Page 15
Healthcare and premature mortality	Page 18

Inequalities

Inequalities	Page 21
--------------	---------



Crown copyright and database rights 2013 Ordnance Survey 100016969
OpenStreetMap contributors ODbL

www.phoutcomes.info

Produced by Public Health England.

For enquiries please contact phof.enquiries@phe.gov.uk or call us on 020 7654 8307.



Spine Charts

Wider determinants of health	Period	Local value	Eng. value	Eng. lowest	Range	Eng. highest
1.01 Children in poverty	2010	29.5	21.1	7.4		45.9
1.03 Pupil absence	2011/12	5.17	5.11	4.30		6.66
1.04i First time entrants to the youth justice system	2012	511	537	151		1,427
1.05 16-18 year olds not in education employment or training	2012	6.4	5.8	2.0		10.5
1.06i Adults with a learning disability who live in stable and appropriate accommodation	2011/12	73.5	70.0	30.9		93.8
1.06ii Adults in contact with secondary mental health services who live in stable and appropriate accommodation	2010/11	62.8	66.8	1.3		92.8
1.08i Gap in the employment rate between those with a long-term health condition and the overall employment rate	2012	4.8	7.1	-5.3		21.7
1.08ii Gap in the employment rate between those with a learning disability and the overall employment rate	2011/12	50.8	63.2	40.2		73.1
1.09i Sickness absence - The percentage of employees who had at least one day off in the previous week	2009 - 11	2.8	2.2	0.6		3.5
1.09ii Sickness absence - The percent of working days lost due to sickness absence	2009 - 11	2.3	1.5	0.3		2.7
1.10 Killed and seriously injured casualties on England's roads	2009 - 11	27.7	41.9	17.5		93.2
1.12i Violent crime (including sexual violence) - hospital admissions for violence	2009/10 - 11/12	59.8	67.7	9.9		213.5
1.12ii Violent crime (including sexual violence) - violence offences	2011/12	13.3	13.6	4.9		32.7
1.13i Re-offending levels - percentage of offenders who re-offend	2010	25.8	26.8	17.3		36.3
1.13ii Re-offending levels - average number of re-offences per offender	2010	0.76	0.77	0.41		1.25
1.14i The percentage of the population affected by noise - Number of complaints about noise	2011/12	12.5	7.5	2.5		58.4
1.15i Statutory homelessness - homelessness acceptances	2011/12	1.2	2.3	0.2		9.7
1.15ii Statutory homelessness - households in temporary accommodation	2011/12	0.2	2.3	0.0		32.4
1.16 Utilisation of outdoor space for exercise/health reasons	Mar 2009 - Feb 2012	6.0	14.0	2.2		29.1
1.18i Social Isolation: % of adult social care users who have as much social contact as they would like	2011/12	40.2	42.3	32.2		54.2

1.01- % of children living in households where income is less than 60% of median household income before housing costs **1.03-** % of half days missed by pupils due to overall absence (incl. authorised and unauthorised absence) **1.04i-** Rate of 10-17 year olds receiving their first reprimand, warning or conviction per 100,000 population **1.05-** % of 16-18 year olds not in education, employment or training (NEET) **1.06i-** % of adults with a learning disability who are known to the council, who are recorded as living in their own home or with their family **1.06ii-** % of adults receiving SMHS living independently at the time of their most recent assessment, formal review or other multi-disciplinary care planning meeting **1.08i-** % point gap in the employment rate between those with a long-term health condition and the overall employment rate **1.08ii-** % point gap in the employment rate between those with a learning disability and the overall employment rate **1.09i-** % of employees who had at least one day off due to sickness absence in the previous working week **1.09ii-** % of working days lost due to sickness absence in the previous working week **1.10-** Rate of people KSI on the roads, all ages, per 100,000 resident population **1.12i-** Age-standardised rate of emergency hospital admissions for violence per 100,000 population **1.12ii-** Crude rate of violence against the person offences per 1,000 population **1.13i-** % of offenders who re-offend from a rolling 12 month cohort **1.13ii-** Average no. of re-offences committed per offender from a rolling 12 month cohort **1.14i-** No. of complaints per year per LA about noise per thousand population **1.15i-** Homelessness acceptances per 1,000 households **1.15ii-** Households in temporary accommodation per 1,000 households **1.16-** % of people using outdoor space for exercise/health reasons **1.18i-** % of adult social care users who have as much social contact as they would like according to the Adult Social Care Users Survey

How to interpret the spine charts

England lowest England value England highest

Significantly lower Significantly higher Not significant
 Significance Not Tested

Health improvement	Period	Local value	Eng. value	Eng. lowest	Range	Eng. highest
2.01 Low birth weight of term babies	2010	4.15	2.85	1.75		7.79
2.02i Breastfeeding - Breastfeeding initiation	2011/12	61.0	74.0	41.8		94.3
2.02ii Breastfeeding - Breastfeeding prevalence at 6-8 weeks after birth	2011/12	35.7	47.2	19.7		82.8
2.03 Smoking status at time of delivery	2011/12	18.9	13.2	2.9		29.7
2.04 Under 18 conceptions	2011	48.5	30.7	9.4		58.1
2.06i Excess weight in 4-5 and 10-11 year olds - 4-5 year olds	2011/12	24.1	22.6	16.1		30.0
2.06ii Excess weight in 4-5 and 10-11 year olds - 10-11 year olds	2011/12	37.5	33.9	26.6		42.8
2.07i Hospital admissions caused by unintentional and deliberate injuries in children (aged 0-14 years)	2011/12	82.7	118.2	68.7		211.4
2.07ii Hospital admissions caused by unintentional and deliberate injuries in young people (aged 15-24)	2011/12	114.5	144.7	71.6		278.7
2.08 Emotional well-being of looked after children	2011/12	13.7	13.8	9.5		20.1
2.13i Percentage of physically active and inactive adults - active adults	2012	50.5	56.0	43.8		68.5
2.13ii Percentage of active and inactive adults - inactive adults	2012	33.4	28.5	18.2		40.2
2.14 Smoking prevalence - adults (over 18s)	2011/12	22.7	20.0	13.2		29.3
2.15i Successful completion of drug treatment - opiate users	2011	8.3	8.6	4.3		19.9
2.15ii Successful completion of drug treatment - non-opiate users	2011	51.3	39.5	19.7		69.0
2.17 Recorded diabetes	2011/12	8.02	5.76	3.60		8.02
2.20i Cancer screening coverage - breast cancer	2012	75.3	76.9	59.4		85.1
2.20ii Cancer screening coverage - cervical cancer	2012	74.8	75.3	60.3		81.4
2.21vii Access to non-cancer screening programmes - diabetic retinopathy	2011/12	72.4	80.9	66.7		95.0
2.22i Take up of NHS Health Check Programme by those eligible - health check offered	2012/13	25.1	16.5	0.7		42.5
2.22ii Take up of NHS Health Check programme by those eligible - health check take up	2012/13	58.8	49.1	7.7		100.0
2.23i Self-reported well-being - people with a low satisfaction score	2011/12	30.5	24.3	14.6		30.5
2.23ii Self-reported well-being - people with a low worthwhile score	2011/12	25.2	20.1	12.8		25.4
2.23iii Self-reported well-being - people with a low happiness score	2011/12	33.5	29.0	19.2		36.6
2.23iv Self-reported well-being - people with a high anxiety score	2011/12	38.5	40.1	34.4		48.3
2.24i Injuries due to falls in people aged 65 and over (Persons)	2011/12	1,278	1,665	1,070		2,985
2.24i Injuries due to falls in people aged 65 and over (males/females) - Male	2011/12	1,042	1,302	704		2,535
2.24i Injuries due to falls in people aged 65 and over (males/females) - Female	2011/12	1,515	2,028	1,298		3,713
2.24ii Injuries due to falls in people aged 65 and over - aged 65-79	2011/12	668	941	545		1,726
2.24iii Injuries due to falls in people aged 65 and over - aged 80+	2011/12	4,027	4,924	2,892		8,965

2.01- % of all live births at term with low birth weight **2.02i-** % of all mothers who breastfed their babies in the first 48hrs after delivery **2.02ii-** % of all infants due a 6-8 week check that are totally or partially breastfed **2.03-** % of women who smoke at time of delivery **2.04-** Rate of conceptions per 1,000 females aged 15-17 **2.06i-** % of children aged 4-5 classified as overweight or obese **2.06ii-** % of children aged 10-11 classified as overweight or obese **2.07i-** Rate of hospital admissions caused by unintentional and deliberate injuries in children aged 0-14 years per 10,000 resident population **2.07ii-** Rate of hospital admissions caused by unintentional and deliberate injuries in young people aged 15-24 per 10,000 resident population **2.08-** Average difficulties score for all looked after children aged 4-16 who have been in care for at least 12 months on 31st March **2.13i-** Percentage of adults achieving at least 150 minutes of physical activity per week in accordance with UK CMO recommended guidelines on physical activity. **2.13ii-** The percentage of adults classified as "inactive" **2.14-** Prevalence of smoking among people aged 18+ **2.15i-** % of opiate drug users that left drug treatment successfully who do not re-present to treatment within 6 months **2.15ii-** % of non-opiate drug users that left treatment successfully who do not re-present to treatment within 6 months **2.17-** % of QOF-recorded cases of diabetes registered with GP practices aged 17+ **2.20i-** % of eligible women screened adequately within the previous 3 years on 31st March **2.20ii-** % of eligible women screened adequately within the previous 3.5 or 5.5 years (according to age) on 31st March **2.21vii-** % of those offered diabetic eye screening who attend a digital screening event **2.22i-** % of eligible population aged 40-74 offered an NHS Health Check **2.22ii-** % of eligible population aged 40-74 offered an NHS Health Check who received an NHS Health Check **2.23i-** % of respondents scoring 0-6 to the question "Overall, how satisfied are you with your life nowadays?" **2.23ii-** % of respondents scoring 0-6 to the question "Overall, to what extent do you feel the things you do in your life are worthwhile?" **2.23iii-** % of respondents scoring 0-6 to the question "Overall, how happy did you feel yesterday?" **2.23iv-** % of respondents scoring 4-10 to the question "Overall, how anxious did you feel yesterday?" **2.24i-** Age-sex standardised rate of emergency hospital admissions for injuries due to falls in persons aged 65+ per 100,000 population **2.24i-** Age standardised rate of emergency hospital admissions for injuries due to falls in males/females aged 65+ per 100,000 population **2.24i-** Age standardised rate of emergency hospital admissions for injuries due to falls in persons aged 65-79 per 100,000 population **2.24ii-** Age-sex standardised rate of emergency hospital admissions for injuries due to falls in persons aged 80+ per 100,000 population

Health protection	Period	Local value	Eng. value	Eng. lowest	Range	Eng. highest
3.01 Fraction of mortality attributable to particulate air pollution	2010	6.40	5.60	3.60		8.30
3.02i Chlamydia diagnoses (15-24 year olds) - Old NCSP data	2011	2,484	2,125	783		5,995
3.02ii Chlamydia diagnoses (15-24 year olds) - CTAD	2012	4,696	1,979	703		6,132
3.03i Population vaccination coverage - Hepatitis B (1 year old)	2011/12	86	-	9		100
3.03i Population vaccination coverage - Hepatitis B (2 years old)	2011/12	100.0	-	2.6		100.0
3.03iii Population vaccination coverage - Dtap / IPV / Hib (1 year old)	2011/12	98.0	94.7	84.9		98.8
3.03iii Population vaccination coverage - Dtap / IPV / Hib (2 years old)	2011/12	98.6	96.1	85.7		98.8
3.03iv Population vaccination coverage - MenC	2011/12	97.8	93.9	81.4		98.6
3.03v Population vaccination coverage - PCV	2011/12	97.9	94.2	83.8		98.6
3.03vi Population vaccination coverage - Hib / MenC booster (2 years old)	2011/12	96.3	92.3	75.7		97.3
3.03vi Population vaccination coverage - Hib / Men C booster (5 years)	2011/12	95.6	88.6	0.0		97.6
3.03vii Population vaccination coverage - PCV booster	2011/12	96.5	91.5	74.7		97.0
3.03viii Population vaccination coverage - MMR for one dose (2 years old)	2011/12	95.6	91.2	78.7		97.2
3.03ix Population vaccination coverage - MMR for one dose (5 years old)	2011/12	96.5	92.9	79.8		98.0
3.03x Population vaccination coverage - MMR for two doses (5 years old)	2011/12	93.7	86.0	69.7		95.3
3.03xii Population vaccination coverage - HPV	2011/12	86.8	86.8	62.3		97.2
3.03xiii Population vaccination coverage - PPV	2011/12	64.5	68.3	52.8		76.6
3.03xiv Population vaccination coverage - Flu (aged 65+)	2011/12	72.3	74.0	64.8		81.5
3.03xv Population vaccination coverage - Flu (at risk individuals)	2011/12	50.0	51.6	43.4		66.3
3.04 People presenting with HIV at a late stage of infection	2009 - 11	59.6	50.0	0.0		75.0
3.05i Treatment completion for TB	2011	91.7	84.3	55.6		98.3
3.05ii Treatment completion for TB - TB incidence	2009 - 11	21.0	15.4	1.1		137.0
3.06 Public sector organisations with a board approved sustainable development management plan	2011/12	86	84	20		100

3.01- Fraction of all-cause adult mortality attributable to long-term exposure to current levels of anthropogenic particulate air pollution **3.02i-** Crude rate of chlamydia diagnoses per 100,000 young adults aged 15-24 using old NCSP data **3.02ii-** Crude rate of chlamydia diagnoses per 100,000 young adults aged 15-24 using CTAD data **3.03i-** % of eligible children who received 4 doses of Hepatitis B vaccine at any time by their 1st birthday **3.03i-** % of eligible children who received 4 doses of Hepatitis B vaccine at any time by their 2nd birthday **3.03iii-** % of eligible children who received 3 doses of Dtap / IPV / Hib vaccine at any time by their 1st birthday **3.03iii-** % of eligible children who received 3 doses of Dtap / IPV / Hib vaccine at any time by their 2nd birthday **3.03iv-** % of eligible children who have received the completed course of Men C vaccine by their 1st birthday **3.03v-** % of eligible children who have received the complete course of PCV vaccine by their 1st birthday **3.03vi-** % of eligible children who have received one booster dose of Hib/Men C vaccine by their 2nd birthday **3.03vi-** % of eligible children who have received one booster dose of Hib/Men C vaccine by their 5th birthday **3.03vii-** % of eligible children who have received one booster dose of PCV vaccine by their 2nd birthday **3.03viii-** % of eligible children who have received one dose of MMR vaccine on or after their 1st birthday and anytime up to their 2nd birthday **3.03ix-** % of eligible children who have received one dose of MMR vaccine on or after their 1st birthday and at any time up to their 5th birthday **3.03x-** % of eligible children who have received two doses of MMR vaccine on or after their 1st birthday and at any time up to their 5th birthday **3.03xii-** % of girls aged 12-13 who have received all 3 doses of the HPV vaccine **3.03xiii-** % of eligible adults aged 65+ who have received the PPV vaccine **3.03xiv-** % of eligible adults aged 65+ who have received the flu vaccine **3.03xv-** % of at risk individuals aged 6 months to 65 years (excluding pregnant women) who have received the flu vaccine **3.04-** % of adults (aged 15+) newly diagnosed with HIV with a CD4 count <350 cells per mm³ **3.05i-** % of people completing treatment for TB within 12 months prior to 31st December **3.05ii-** Rate of reported new cases of TB per year per 100,000 population **3.06-** % of NHS organisations with a board approved sustainable development management plan

How to interpret the spine charts

England lowest England value England highest

Significantly lower Significantly higher Not significant
 Significance Not Tested

Healthcare and premature mortality	Period	Local value	Eng. value	Eng. lowest	Range	Eng. highest
4.01 Infant mortality	2009 - 11	8.02	4.29	2.28		8.02
4.03 Mortality rate from causes considered preventable (provisional)	2009 - 11	162.8	146.1	100.7		264.2
4.04i Under 75 mortality rate from all cardiovascular diseases (provisional)	2009 - 11	73.6	60.9	39.5		113.3
4.04ii Under 75 mortality rate from cardiovascular diseases considered preventable (provisional)	2009 - 11	50.1	40.6	23.0		75.1
4.05i Under 75 mortality rate from cancer (provisional)	2009 - 11	120.3	108.1	84.0		153.2
4.05ii Under 75 mortality rate from cancer considered preventable (provisional)	2009 - 11	67.7	61.9	45.2		98.1
4.06i Under 75 mortality rate from liver disease (provisional)	2009 - 11	16.8	14.4	8.7		39.3
4.06ii Under 75 mortality rate from liver disease considered preventable (provisional)	2009 - 11	15.0	12.7	7.5		37.0
4.07i Under 75 mortality rate from respiratory disease (provisional)	2009 - 11	26.9	23.4	13.7		62.0
4.07ii Under 75 mortality rate from respiratory disease considered preventable (provisional)	2009 - 11	12.9	11.6	5.3		28.6
4.08 Mortality from communicable diseases (provisional)	2009 - 11	29.0	29.9	22.0		54.9
4.10 Suicide rate (provisional)	2009 - 11	5.3	7.9	4.3		13.9
4.11 Emergency readmissions within 30 days of discharge from hospital	2010/11	11.7	11.8	8.1		13.8
4.11 Emergency readmissions within 30 days of discharge from hospital - Male	2010/11	12.7	12.1	8.6		14.8
4.11 Emergency readmissions within 30 days of discharge from hospital - Female	2010/11	10.9	11.4	7.2		13.2
4.12i Preventable sight loss - age related macular degeneration (AMD)	2011/12	67.3	110.5	12.8		225.2
4.12ii Preventable sight loss - glaucoma	2011/12		12.8	3.0		34.5
4.12iii Preventable sight loss - diabetic eye disease	2011/12		3.8	0.9		15.8
4.12iv Preventable sight loss - sight loss certifications	2011/12	25.2	44.5	5.1		82.5
4.14i Hip fractures in people aged 65 and over	2011/12	480.2	457.2	337.9		599.5
4.14ii Hip fractures in people aged 65 and over - aged 65-79	2011/12	201.9	222.2	135.7		346.7
4.14iii Hip fractures in people aged 65 and over - aged 80+	2011/12	1,732	1,515	993		2,021

4.01- Rate of deaths in infants aged under 1 year per 1,000 live births **4.03-** Age-standardised rate of mortality from causes considered preventable per 100,000 population (provisional) **4.04i-** Age-standardised rate of mortality from all cardiovascular diseases (including heart disease and stroke) in persons less than 75 years of age per 100,000 population (provisional) **4.04ii-** Age-standardised rate of mortality considered preventable from all cardiovascular diseases (incl. heart disease and stroke) in those aged <75 per 100,000 population (provisional) **4.05i-** Age-standardised rate of mortality from all cancers in persons less than 75 years of age per 100,000 population (provisional) **4.05ii-** Age-standardised rate of mortality considered preventable from all cancers in those aged <75 per 100,000 population (provisional) **4.06i-** Age-standardised rate of mortality from liver disease in persons less than 75 years of age per 100,000 population (provisional) **4.06ii-** Age-standardised rate of mortality considered preventable from liver disease in those aged <75 per 100,000 population (provisional) **4.07i-** Age-standardised rate of mortality from respiratory disease in persons less than 75 years per 100,000 population (provisional) **4.07ii-** Age-standardised rate of mortality considered preventable from respiratory disease in those aged <75 per 100,000 population (provisional) **4.08-** Age-standardised rate of mortality from communicable diseases per 100,000 population (provisional) **4.10-** Age-standardised mortality rate from suicide and injury of undetermined intent per 100,000 population (provisional) **4.11-** Indirectly standardised % of emergency admissions to any hospital within 30 days of the previous discharge from hospital **4.11-** Indirectly standardised % of emergency admissions to any hospital within 30 days of the previous discharge from hospital **4.11-** Indirectly standardised % of emergency admissions to any hospital within 30 days of the previous discharge from hospital **4.12i-** Crude rate of sight loss due to age related macular degeneration (AMD) in those aged 65+ per 100,000 population **4.12ii-** Crude rate of sight loss due to glaucoma in those aged 40+ per 100,000 population **4.12iii-** Crude rate of sight loss due to diabetic eye disease in those aged 12+ per 100,000 population **4.12iv-** Crude rate of sight loss certifications per 100,000 population **4.14i-** Age-sex standardised rate of emergency admissions for fractured neck of femur in those aged 65+ per 100,000 population **4.14ii-** Age-sex standardised rate of emergency admissions for fractured neck of femur in those aged 65-79 per 100,000 population **4.14iii-** Age-sex standardised rate of emergency admissions for fractured neck of femur in those aged 80+ per 100,000 population

How to interpret the spine charts



Tartan Rugs

Wider determinants of health

Indicator	Period	England	Birmingham	Coventry	Dudley	Herefordshire, County of	Sandwell	Shropshire	Solihull	Staffordshire CC	Stoke-on-Trent	Telford and Wrekin	Walsall	Warwickshire CC	Wolverhampton	Worcestershire CC
1.01 Children in poverty	2010	21.1	33.5	27.0	23.1	14.8	30.6	13.6	16.7	15.9	28.4	25.9	29.5	14.6	32.0	15.8
1.03 Pupil absence	2011/12	5.11	5.19	5.24	5.34	5.12	5.44	4.76	5.00	4.90	5.80	4.91	5.17	4.90	5.64	4.89
1.04i First time entrants to the youth justice system	2012	537	573	452	403	669	422	423	349	332	616	483	511	371	528	579
1.05 16-18 year olds not in education employment or training	2012	5.8	7.5	5.2	6.6	6.2	6.3	5.4	6.0	5.4	9.1	6.9	6.4	3.6	6.8	5.4
1.06i Adults with a learning disability who live in stable and appropriate accommodation	2011/12	70.0	51.2	-	76.8	76.8	64.9	77.7	52.8	75.3	71.1	66.7	73.5	54.5	63.1	70.4
1.06ii Adults in contact with secondary mental health services who live in stable and appropriate accommodation	2010/11	66.8	63.7	66.0	66.0	46.6	70.5	85.1	66.9	76.2	83.7	36.7	62.8	65.8	84.1	70.8
1.08i Gap in the employment rate between those with a long-term health condition and the overall employment rate	2012	7.1	11.7	1.8	4.7	8.9	9.6	9.2	0.2	8.0	11.2	11.0	4.8	9.5	12.8	3.1
1.08ii Gap in the employment rate between those with a learning disability and the overall employment rate	2011/12	63.2	52.3	59.2	65.7	59.0	59.0	64.1	67.4	64.1	61.9	65.6	50.8	68.9	59.8	66.5
1.09i Sickness absence - The percentage of employees who had at least one day off in the previous week	2009 - 11	2.2	2.2	2.7	2.2	1.3	2.9	2.8	2.3	1.9	1.9	3.2	2.8	1.3	1.6	1.8
1.09ii Sickness absence - The percent of working days lost due to sickness absence	2009 - 11	1.5	1.3	2.1	1.5	1.1	1.7	2.0	1.8	1.5	1.3	2.0	2.3	0.7	1.1	1.2
1.10 Killed and seriously injured casualties on England's roads	2009 - 11	41.9	41.0	36.9	31.5	43.9	36.4	42.7	34.7	26.7	22.8	29.2	27.7	56.5	30.3	30.6
1.12i Violent crime (including sexual violence) - hospital admissions for violence	2009/10 - 11/12	67.7	97.6	96.9	78.4	38.2	119.9	44.2	51.1	34.7	28.1	49.0	59.8	47.3	71.9	43.2
1.12ii Violent crime (including sexual violence) - violence offences	2011/12	13.6	15.2	14.3	8.1	12.0	11.8	8.7	10.4	11.6	23.6	12.6	13.3	9.6	15.2	13.4
1.13i Re-offending levels - percentage of offenders who re-offend	2010	26.8	26.6	27.3	22.8	24.6	24.7	25.4	21.8	21.7	27.8	23.9	25.8	20.2	25.8	25.2
1.13ii Re-offending levels - average number of re-offences per offender	2010	0.77	0.72	0.81	0.61	0.71	0.67	0.68	0.60	0.57	0.79	0.65	0.76	0.54	0.73	0.76
1.14i The percentage of the population affected by noise - Number of complaints about noise	2011/12	7.5	4.0	17.2	4.9	5.4	3.1	6.5	2.8	5.3	15.0	5.0	12.5	6.3	13.1	4.6
1.15i Statutory homelessness - homelessness acceptances	2011/12	2.3	9.7	4.5	1.2	3.3	4.4	2.2	3.9	1.4	2.5	2.0	1.2	1.9	3.7	3.0
1.15ii Statutory homelessness - households in temporary accommodation	2011/12	2.3	1.7	0.5	0.3	0.9	0.1	0.6	0.6	0.1	0.2	1.0	0.2	0.2	0.6	0.6
1.16 Utilisation of outdoor space for exercise/health reasons	Mar 2009 - Feb 2012	14.0	7.1	10.3	19.7	29.1	9.4	27.0	3.0	16.0	4.2	18.5	6.0	10.8	11.7	24.0
1.18i Social Isolation: % of adult social care users who have as much social contact as they would like	2011/12	42.3	40.1	44.1	47.4	45.8	42.2	40.9	41.0	46.3	44.7	39.5	40.2	41.6	47.5	47.2

Comparison with respect to England value:

Lower Similar Higher

Not compared

Health improvement

Indicator	Period	England	Birmingham	Coventry	Dudley	Herefordshire, County of	Sandwell	Shropshire	Solihull	Staffordshire CC	Stoke-on-Trent	Telford and Wrekin	Walsall	Warwickshire CC	Wolverhampton	Worcestershire CC
2.01 Low birth weight of term babies	2010	2.85	3.97	2.77	3.17	2.28	4.22	3.80	2.48	2.37	3.12	4.56	4.15	2.44	3.17	2.57
2.02i Breastfeeding - Breastfeeding initiation	2011/12	74.0	68.0	74.7	57.2	72.9	60.1	75.6	68.0	66.0	61.7	66.2	61.0	72.5	65.4	73.4
2.02ii Breastfeeding - Breastfeeding prevalence at 6-8 weeks after birth	2011/12	47.2	-	40.3	28.8	47.5	35.0	43.8	40.1	-	34.8	32.9	35.7	45.1	40.1	42.3
2.03 Smoking status at time of delivery	2011/12	13.2	11.6	13.0	15.5	11.2	14.8	15.0	14.3	14.8	20.9	22.7	18.9	19.6	19.6	16.3
2.04 Under 18 conceptions	2011	30.7	34.3	48.9	35.6	26.0	46.1	23.7	26.2	30.4	42.2	37.4	48.5	30.9	43.9	29.7
2.06i Excess weight in 4-5 and 10-11 year olds - 4-5 year olds	2011/12	22.6	24.4	24.5	24.7	21.7	22.8	23.6	18.1	22.7	26.2	23.9	24.1	19.8	27.8	24.2
2.06ii Excess weight in 4-5 and 10-11 year olds - 10-11 year olds	2011/12	33.9	40.0	35.5	38.4	29.4	40.3	33.4	29.3	34.5	39.3	35.7	37.5	31.6	39.3	33.7
2.07i Hospital admissions caused by unintentional and deliberate injuries in children (aged 0-14 years)	2011/12	118.2	123.6	143.7	111.6	126.0	130.7	105.3	103.2	142.6	144.0	118.3	82.7	114.4	102.4	102.4
2.07ii Hospital admissions caused by unintentional and deliberate injuries in young people (aged 15-24)	2011/12	144.7	143.0	159.4	154.4	126.9	153.0	136.4	121.3	144.9	168.1	145.6	114.5	147.7	117.2	131.2
2.08 Emotional well-being of looked after children	2011/12	13.8	13.2	14.1	12.7	17.0	13.6	13.5	14.0	15.3	15.1	14.8	13.7	14.1	13.5	14.5
2.13i Percentage of physically active and inactive adults - active adults	2012	56.0	46.9	49.4	48.4	56.9	43.8	58.0	57.0	55.9	50.2	51.5	50.5	55.3	51.9	58.4
2.13ii Percentage of active and inactive adults - inactive adults	2012	28.5	34.3	36.8	37.7	29.2	39.1	28.4	25.9	30.0	35.1	30.5	33.4	27.0	34.4	26.4
2.14 Smoking prevalence - adults (over 18s)	2011/12	20.0	19.3	18.2	19.1	17.4	22.9	17.4	13.2	19.1	25.3	22.4	22.7	19.1	22.2	18.4
2.15i Successful completion of drug treatment - opiate users	2011	8.6	8.6	13.3	10.3	9.5	8.4	8.6	8.6	9.7	5.1	8.8	8.3	12.4	8.5	6.1
2.15ii Successful completion of drug treatment - non-opiate users	2011	39.5	43.6	43.7	27.5	27.2	23.3	31.1	39.5	34.2	34.3	19.7	51.3	42.4	39.5	32.6
2.17 Recorded diabetes	2011/12	5.76	7.09	5.74	6.19	5.90	7.42	5.60	5.78	6.09	6.98	6.08	8.02	5.45	7.44	5.92
2.20i Cancer screening coverage - breast cancer	2012	76.9	72.1	71.6	77.3	82.3	72.6	82.6	78.4	80.0	77.0	80.0	75.3	78.9	71.0	82.2
2.20ii Cancer screening coverage - cervical cancer	2012	75.3	69.9	72.8	75.4	76.7	73.0	77.8	75.4	77.8	74.4	74.6	74.8	76.5	72.0	77.1
2.21vii Access to non-cancer screening programmes - diabetic retinopathy	2011/12	80.9	72.9	77.8	72.9	77.5	73.2	88.7	77.1	81.5	81.1	87.1	72.4	86.4	74.6	74.8
2.22i Take up of NHS Health Check Programme by those eligible - health check offered	2012/13	16.5	19.4	5.8	23.4	24.2	19.2	18.2	28.5	18.0	21.8	29.9	25.1	7.7	10.9	13.1
2.22ii Take up of NHS Health Check programme by those eligible - health check take up	2012/13	49.1	43.5	79.2	41.5	44.6	26.0	41.5	33.6	52.4	50.7	43.3	58.8	44.8	40.9	51.6
2.23i Self-reported well-being - people with a low satisfaction score	2011/12	24.3	30.5	30.5	30.5	22.9	30.5	19.6	30.5	23.9	29.0	25.1	30.5	26.6	30.5	21.9
2.23ii Self-reported well-being - people with a low worthwhile score	2011/12	20.1	25.2	25.2	25.2	19.7	25.2	15.4	25.2	18.8	25.4	21.6	25.2	25.0	25.2	19.2
2.23iii Self-reported well-being - people with a low happiness score	2011/12	29.0	33.5	33.5	33.5	26.7	33.5	23.6	33.5	28.1	31.4	29.0	33.5	32.2	33.5	30.5
2.23iv Self-reported well-being - people with a high anxiety score	2011/12	40.1	38.5	38.5	38.5	38.5	38.5	37.7	38.5	38.0	39.4	41.8	38.5	39.5	38.5	38.8
2.24i Injuries due to falls in people aged 65 and over (Persons)	2011/12	1,665	1,909	2,261	1,826	1,112	1,826	1,257	1,692	1,574	1,640	1,129	1,278	1,532	1,070	1,382
2.24i Injuries due to falls in people aged 65 and over (males/females) - Male	2011/12	1,302	1,624	1,852	1,410	856	1,612	1,026	1,449	1,193	1,345	945	1,042	1,161	843	1,052
2.24i Injuries due to falls in people aged 65 and over (males/females) - Female	2011/12	2,028	2,193	2,669	2,241	1,368	2,041	1,488	1,936	1,954	1,936	1,312	1,515	1,903	1,298	1,711
2.24ii Injuries due to falls in people aged 65 and over - aged 65-79	2011/12	941	1,137	1,230	906	612	1,032	749	841	865	974	617	668	832	627	734
2.24iii Injuries due to falls in people aged 65 and over - aged 80+	2011/12	4,924	5,378	6,900	5,964	3,362	5,402	3,542	5,523	4,763	4,639	3,430	4,027	4,684	3,066	4,295

Comparison with respect to England value:

Lower	Similar	Higher
-------	---------	--------

Not compared

Health protection

Indicator	Period	England	Birmingham	Coventry	Dudley	Herefordshire, County of	Sandwell	Shropshire	Solihull	Staffordshire CC	Stoke-on-Trent	Telford and Wrekin	Walsall	Warwickshire CC	Wolverhampton	Worcestershire CC
3.01 Fraction of mortality attributable to particulate air pollution	2010	5.60	6.40	6.20	5.90	4.50	6.90	4.20	6.00	5.20	5.60	4.80	6.40	5.50	5.80	5.20
3.02i Chlamydia diagnoses (15-24 year olds) - Old NCSP data	2011	2,125	2,406	1,687	1,621	2,173	2,252	1,534	1,919	2,111	2,521	2,473	2,484	1,472	2,733	1,539
3.02ii Chlamydia diagnoses (15-24 year olds) - CTAD	2012	1,979	2,345	2,082	725	1,894	1,447	1,250	1,876	1,654	1,879	1,456	4,696	1,485	1,160	1,520
3.03i Population vaccination coverage - Hepatitis B (1 year old)	2011/12	-	-	100	100	-	95	83	-	90	100	83	86	100	100	-
3.03i Population vaccination coverage - Hepatitis B (2 years old)	2011/12	-	33.0	100.0	100.0	-	92.9	-	-	67.7	100.0	-	100.0	83.3	75.0	-
3.03iii Population vaccination coverage - Dtap / IPV / Hib (1 year old)	2011/12	94.7	90.2	97.1	96.6	93.6	94.6	97.0	95.6	97.0	95.7	96.7	98.0	97.6	94.8	96.3
3.03iii Population vaccination coverage - Dtap / IPV / Hib (2 years old)	2011/12	96.1	94.5	98.2	98.0	94.8	96.3	98.0	97.4	97.6	97.4	98.5	98.6	98.2	95.5	97.2
3.03iv Population vaccination coverage - MenC	2011/12	93.9	89.6	96.3	96.5	92.8	94.0	96.1	94.6	96.9	96.7	96.1	97.8	97.0	94.1	95.7
3.03v Population vaccination coverage - PCV	2011/12	94.2	90.2	96.7	96.6	93.3	94.1	96.6	94.9	96.7	95.8	96.3	97.9	97.1	94.3	95.7
3.03vi Population vaccination coverage - Hib / MenC booster (2 years old)	2011/12	92.3	86.8	93.3	93.3	88.3	93.4	96.4	95.2	94.4	96.7	96.1	96.3	95.1	91.2	94.2
3.03vi Population vaccination coverage - Hib / Men C booster (5 years)	2011/12	88.6	88.7	93.0	93.0	88.0	93.6	95.8	93.3	95.1	97.4	93.7	95.6	94.8	89.5	86.9
3.03vii Population vaccination coverage - PCV booster	2011/12	91.5	88.8	95.0	95.2	88.7	91.0	95.9	93.2	93.7	95.3	96.6	96.5	96.1	89.7	92.2
3.03viii Population vaccination coverage - MMR for one dose (2 years old)	2011/12	91.2	88.5	94.6	94.4	87.7	89.7	95.4	91.0	92.1	94.6	96.5	95.6	95.6	89.5	93.1
3.03ix Population vaccination coverage - MMR for one dose (5 years old)	2011/12	92.9	93.3	97.3	95.5	92.4	93.8	95.5	91.2	94.4	96.5	95.4	96.5	96.1	92.3	92.9
3.03x Population vaccination coverage - MMR for two doses (5 years old)	2011/12	86.0	82.9	93.3	89.6	82.5	86.4	91.1	86.3	88.9	91.9	91.2	93.7	93.7	80.6	85.4
3.03xii Population vaccination coverage - HPV	2011/12	86.8	84.2	90.4	90.7	83.4	88.4	92.5	91.1	93.1	92.3	90.3	86.8	89.3	84.1	79.8
3.03xiii Population vaccination coverage - PPV	2011/12	68.3	65.3	64.6	67.8	64.8	67.6	71.3	72.4	66.8	68.7	66.1	64.5	68.2	65.0	71.6
3.03xiv Population vaccination coverage - Flu (aged 65+)	2011/12	74.0	71.8	70.8	73.2	72.4	69.5	72.8	73.7	71.7	74.4	72.1	72.3	74.6	70.6	74.8
3.03xv Population vaccination coverage - Flu (at risk individuals)	2011/12	51.6	50.1	52.1	52.2	53.4	49.4	52.0	48.8	49.4	50.0	50.1	50.0	53.6	50.0	53.7
3.04 People presenting with HIV at a late stage of infection	2009 - 11	50.0	50.1	61.5	36.7	59.1	63.7	47.1	36.4	64.6	65.9	37.5	59.6	50.0	54.8	37.0
3.05i Treatment completion for TB	2011	84.3	86.0	80.0	77.1	-	83.2	-	-	75.6	84.4	-	91.7	89.6	74.1	55.6
3.05ii Treatment completion for TB - TB incidence	2009 - 11	15.4	39.5	30.7	10.8	2.6	35.6	3.0	7.4	4.9	15.0	6.1	21.0	8.8	34.5	3.5
3.06 Public sector organisations with a board approved sustainable development management plan	2011/12	84	92	80	60	75	80	86	80	91	83	83	86	71	80	83

Comparison with respect to England value:

Lower Similar Higher

Not compared

Healthcare and premature mortality

Indicator	Period	England	Birmingham	Coventry	Dudley	Herefordshire, County of	Sandwell	Shropshire	Solihull	Staffordshire CC	Stoke-on-Trent	Telford and Wrekin	Walsall	Warwickshire CC	Wolverhampton	Worcestershire CC
4.01 Infant mortality	2009 - 11	4.29	7.15	5.22	4.05	3.75	6.46	3.44	2.83	5.13	7.30	5.05	8.02	5.00	7.49	3.56
4.03 Mortality rate from causes considered preventable (provisional)	2009 - 11	146.1	179.4	177.2	153.2	136.8	182.7	133.9	134.8	136.3	194.0	164.5	162.8	129.8	171.6	130.8
4.04i Under 75 mortality rate from all cardiovascular diseases (provisional)	2009 - 11	60.9	77.7	65.4	61.0	57.8	83.3	50.5	50.8	54.7	77.4	73.1	73.6	52.8	78.5	56.8
4.04ii Under 75 mortality rate from cardiovascular diseases considered preventable (provisional)	2009 - 11	40.6	54.7	41.6	42.7	38.9	56.3	35.1	35.1	36.5	52.6	48.8	50.1	35.9	49.2	35.7
4.05i Under 75 mortality rate from cancer (provisional)	2009 - 11	108.1	116.1	122.1	111.4	101.5	125.3	103.1	103.5	105.0	132.4	124.9	120.3	100.8	118.4	100.0
4.05ii Under 75 mortality rate from cancer considered preventable (provisional)	2009 - 11	61.9	70.0	75.9	65.5	54.1	71.9	56.3	62.4	57.8	78.6	67.8	67.7	53.2	70.1	54.9
4.06i Under 75 mortality rate from liver disease (provisional)	2009 - 11	14.4	18.1	17.4	20.3	10.1	22.4	12.2	12.5	12.9	20.2	17.6	16.8	13.9	24.6	11.9
4.06ii Under 75 mortality rate from liver disease considered preventable (provisional)	2009 - 11	12.7	16.5	15.6	19.0	9.1	20.0	10.9	11.2	11.5	18.5	17.0	15.0	12.4	21.5	11.0
4.07i Under 75 mortality rate from respiratory disease (provisional)	2009 - 11	23.4	31.2	35.0	24.0	14.6	33.5	17.8	18.6	19.7	34.9	25.3	26.9	17.9	29.2	20.4
4.07ii Under 75 mortality rate from respiratory disease considered preventable (provisional)	2009 - 11	11.6	16.2	17.3	10.5	8.6	14.0	10.2	9.1	8.9	17.8	13.3	12.9	8.4	13.9	9.0
4.08 Mortality from communicable diseases (provisional)	2009 - 11	29.9	32.7	30.7	29.1	25.4	36.6	25.7	22.7	26.7	40.4	32.9	29.0	27.2	29.8	28.5
4.10 Suicide rate (provisional)	2009 - 11	7.9	6.0	10.6	6.5	9.4	7.6	10.3	4.3	8.4	8.2	8.6	5.3	7.8	6.9	8.1
4.11 Emergency readmissions within 30 days of discharge from hospital	2010/11	11.8	13.4	12.6	11.7	8.1	13.2	9.5	13.4	12.0	13.5	10.8	11.7	10.8	11.8	11.1
4.11 Emergency readmissions within 30 days of discharge from hospital - Male	2010/11	12.1	14.1	13.1	12.5	8.6	13.9	10.1	14.3	12.5	14.1	11.3	12.7	11.3	12.6	11.5
4.11 Emergency readmissions within 30 days of discharge from hospital - Female	2010/11	11.4	12.7	12.2	11.0	7.6	12.5	8.9	12.6	11.5	13.0	10.3	10.9	10.3	10.9	10.7
4.12i Preventable sight loss - age related macular degeneration (AMD)	2011/12	110.5	88.6	36.6	134.8	147.3	53.2	126.7	150.4	34.1	12.8	131.5	67.3	82.8	137.4	78.1
4.12ii Preventable sight loss - glaucoma	2011/12	12.8	14.3	10.2	9.2	15.3	5.7	8.7	20.5	3.0	-	13.7	-	8.3	14.4	13.5
4.12iii Preventable sight loss - diabetic eye disease	2011/12	3.8	3.8	-	5.2	6.8	2.3	4.5	3.9	0.9	-	5.0	-	3.4	3.3	2.2
4.12iv Preventable sight loss - sight loss certifications	2011/12	44.5	37.9	22.4	52.4	63.7	22.7	59.3	53.7	14.9	5.6	43.8	25.2	31.1	51.6	40.9
4.14i Hip fractures in people aged 65 and over	2011/12	457.2	481.1	488.8	466.2	389.2	527.3	427.2	417.4	491.8	472.6	374.4	480.2	442.3	507.6	443.6
4.14ii Hip fractures in people aged 65 and over - aged 65-79	2011/12	222.2	259.5	253.1	216.8	206.9	259.7	174.7	213.7	234.4	272.8	153.2	201.9	185.4	225.2	221.2
4.14iii Hip fractures in people aged 65 and over - aged 80+	2011/12	1,515	1,478	1,550	1,589	1,210	1,731	1,564	1,334	1,650	1,372	1,370	1,732	1,598	1,778	1,444

Comparison with respect to England value:

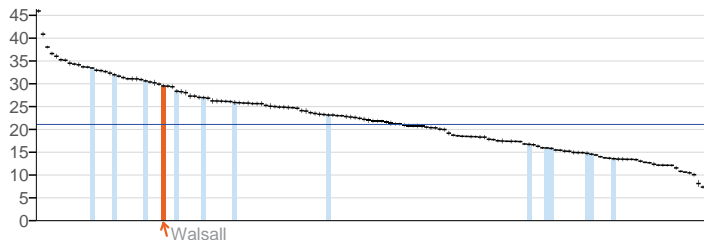
Lower	Similar	Higher
-------	---------	--------

Not compared

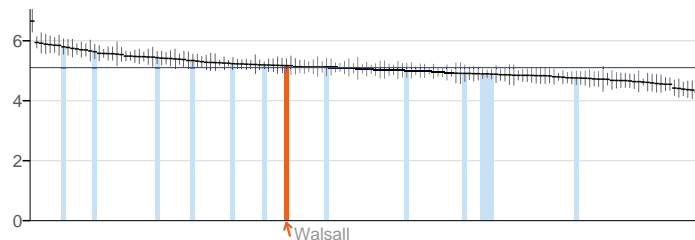
Summary Charts

Wider determinants of health

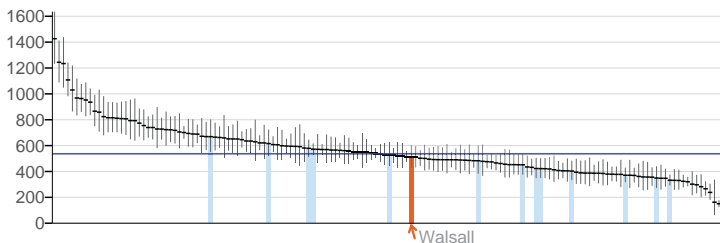
1.01. Children in poverty



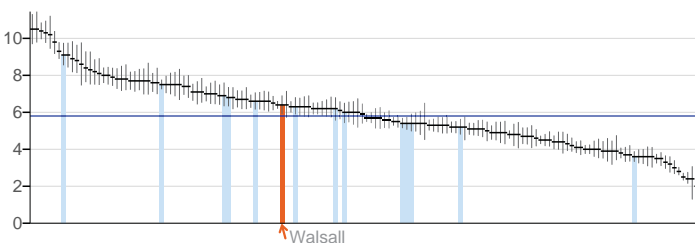
1.03. Pupil absence



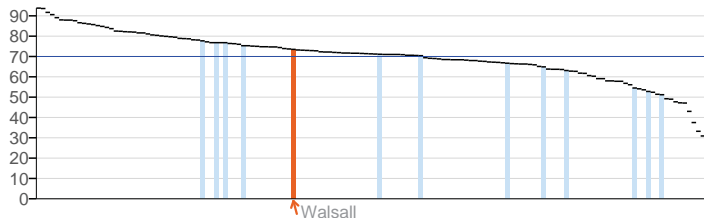
1.04i. First time entrants to the youth justice system



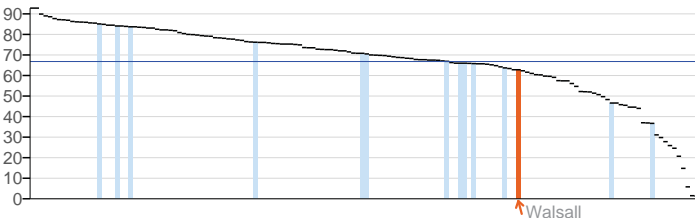
1.05. 16-18 year olds not in education employment or training



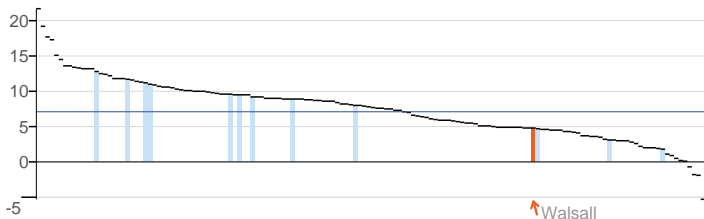
1.06i. Adults with a learning disability who live in stable and appropriate accommodation



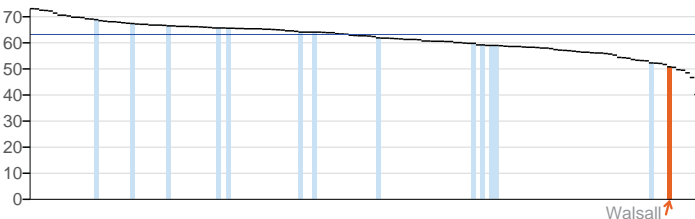
1.06ii. Adults in contact with secondary mental health services who live in stable and appropriate accommodation



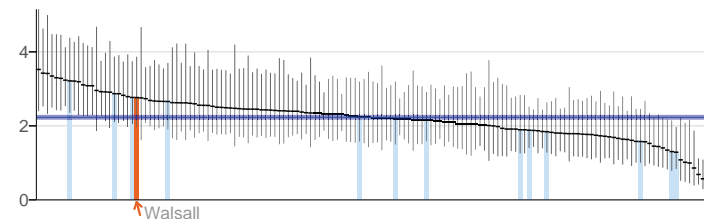
1.08i. Gap in the employment rate between those with a long-term health condition and the overall employment rate



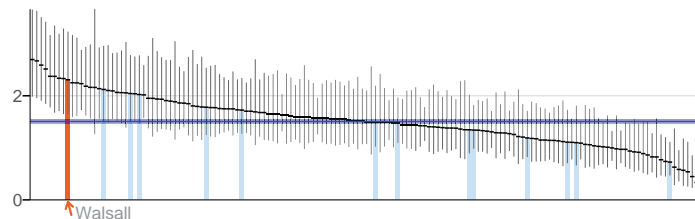
1.08ii. Gap in the employment rate between those with a learning disability and the overall employment rate



1.09i. Sickness absence - The percentage of employees who had at least one day off in the previous week



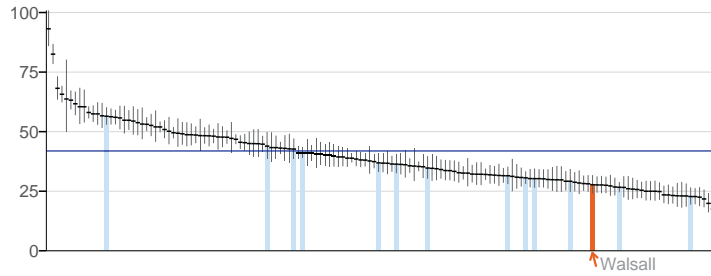
1.09ii. Sickness absence - The percent of working days lost due to sickness absence



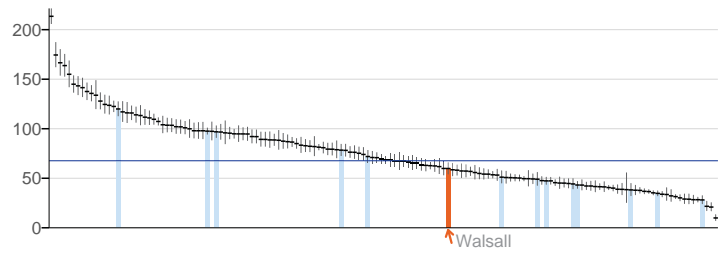
Key ■ England value and confidence interval ↑ Walsall ■ Other local authorities in West Midlands

Wider determinants of health

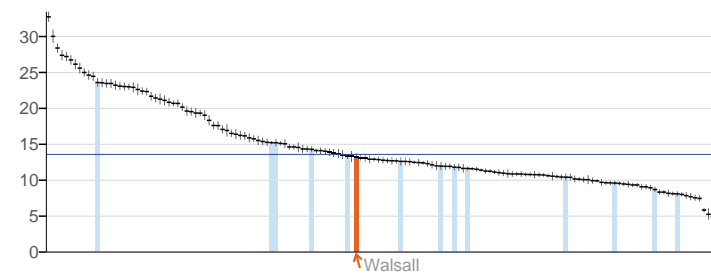
1.10. Killed and seriously injured casualties on England's roads



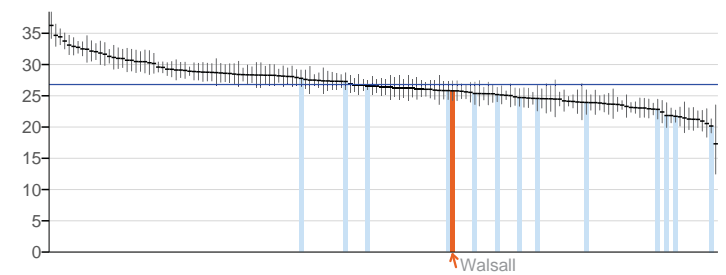
1.12i. Violent crime (including sexual violence) - hospital admissions for violence



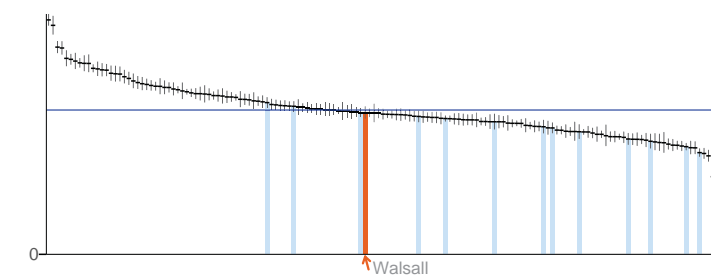
1.12ii. Violent crime (including sexual violence) - violence offences



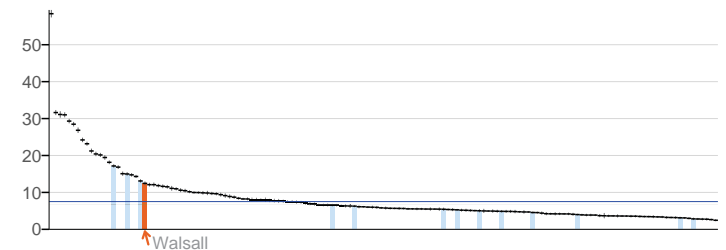
1.13i. Re-offending levels - percentage of offenders who re-offend



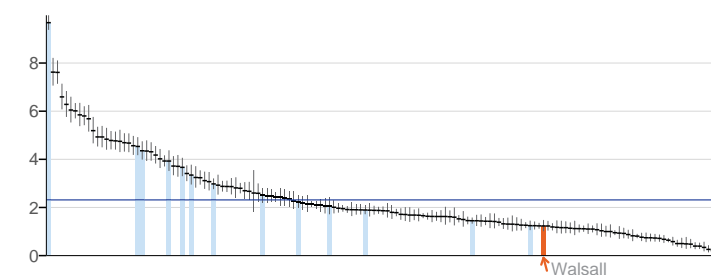
1.13ii. Re-offending levels - average number of re-offences per offender



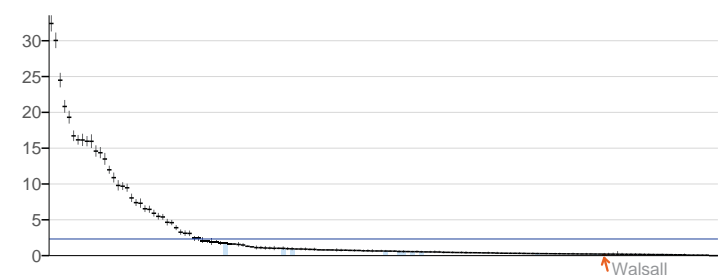
1.14i. The percentage of the population affected by noise - Number of complaints about noise



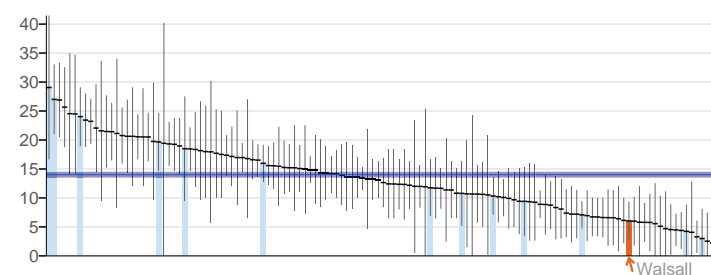
1.15i. Statutory homelessness - homelessness acceptances



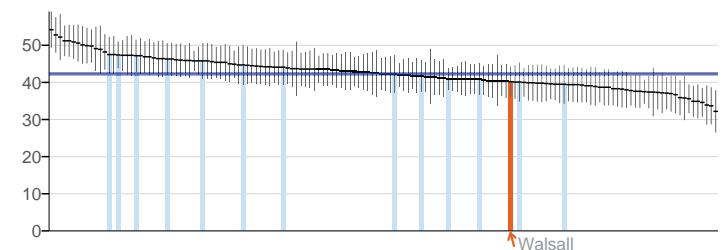
1.15ii. Statutory homelessness - households in temporary accommodation



1.16. Utilisation of outdoor space for exercise/health reasons



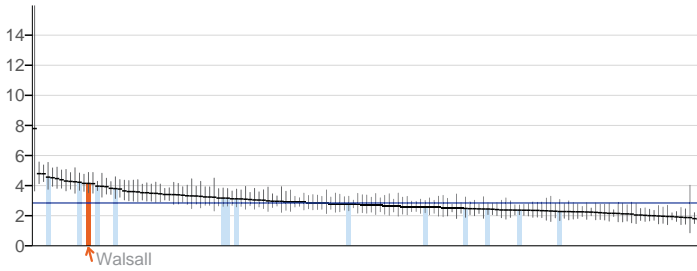
1.18i. Social Isolation: % of adult social care users who have as much social contact as they would like



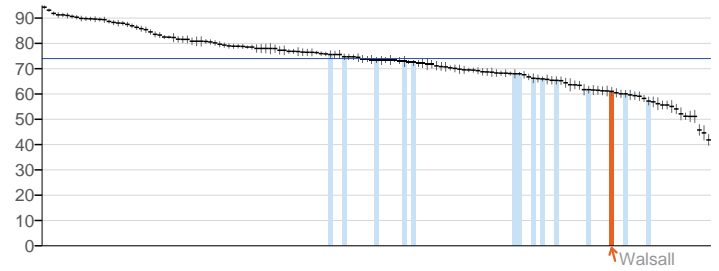
Key England value and confidence interval Walsall Other local authorities in West Midlands

Health improvement

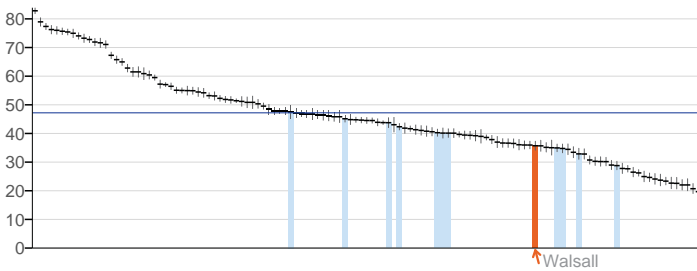
2.01. Low birth weight of term babies



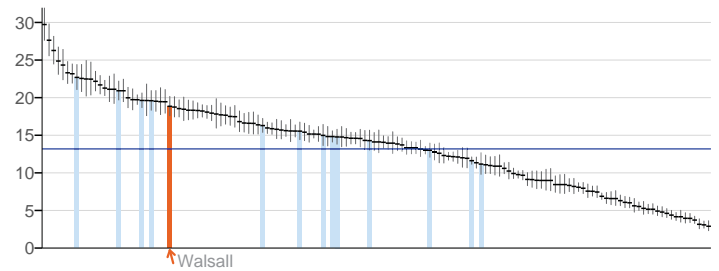
2.02i. Breastfeeding - Breastfeeding initiation



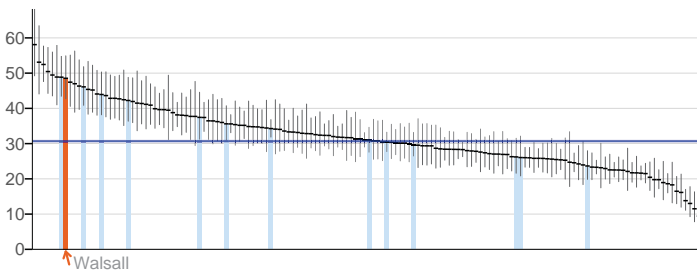
2.02ii. Breastfeeding - Breastfeeding prevalence at 6-8 weeks after birth



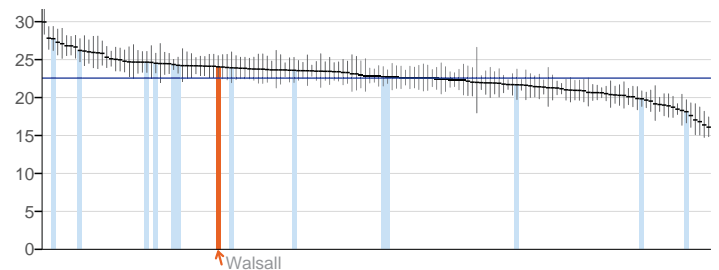
2.03. Smoking status at time of delivery



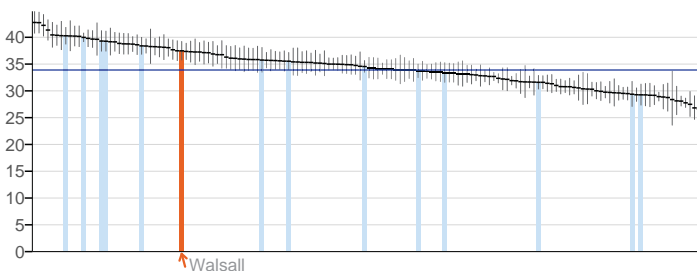
2.04. Under 18 conceptions



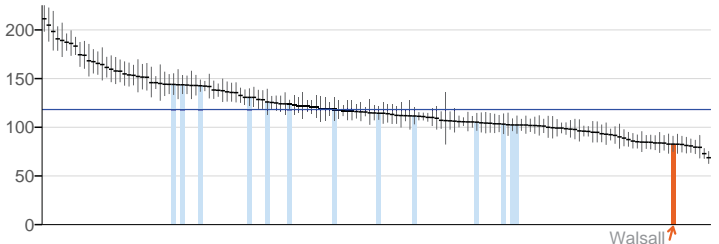
2.06i. Excess weight in 4-5 and 10-11 year olds - 4-5 year olds



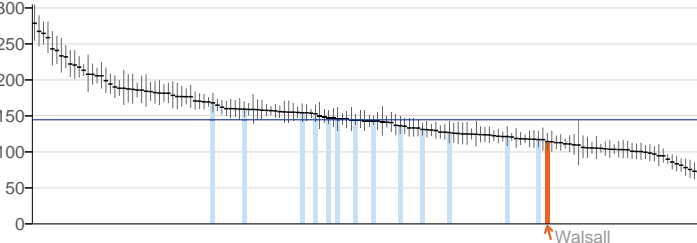
2.06ii. Excess weight in 4-5 and 10-11 year olds - 10-11 year olds



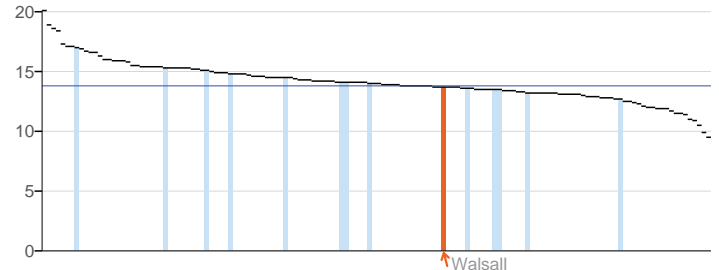
2.07i. Hospital admissions caused by unintentional and deliberate injuries in children (aged 0-14 years)



2.07ii. Hospital admissions caused by unintentional and deliberate injuries in young people (aged 15-24)



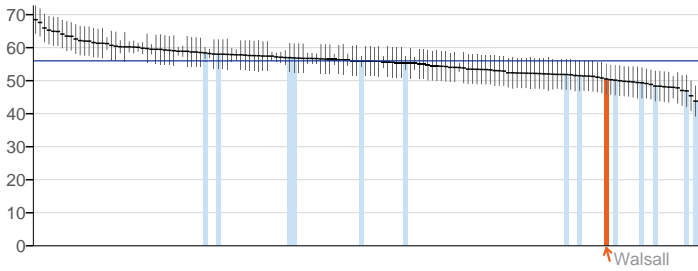
2.08. Emotional well-being of looked after children



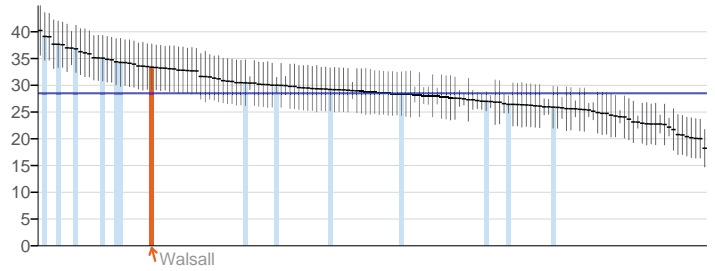
Key England value and confidence interval Walsall Other local authorities in West Midlands

Health improvement

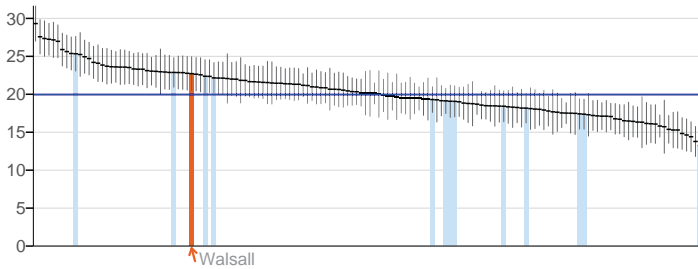
2.13i. Percentage of physically active and inactive adults - active adults



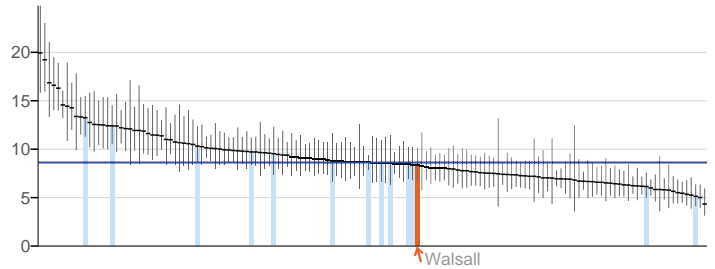
2.13ii. Percentage of active and inactive adults - inactive adults



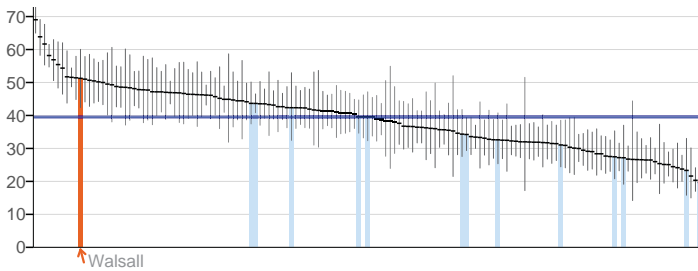
2.14. Smoking prevalence - adults (over 18s)



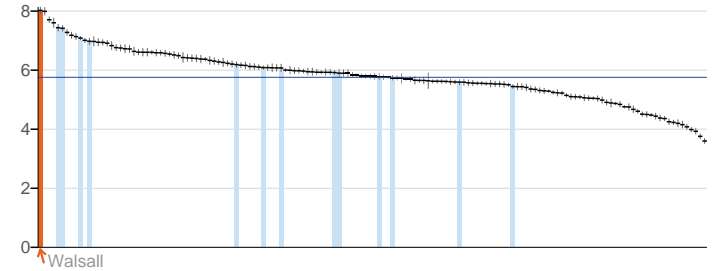
2.15i. Successful completion of drug treatment - opiate users



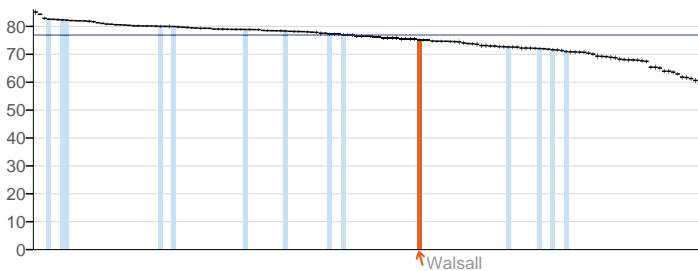
2.15ii. Successful completion of drug treatment - non-opiate users



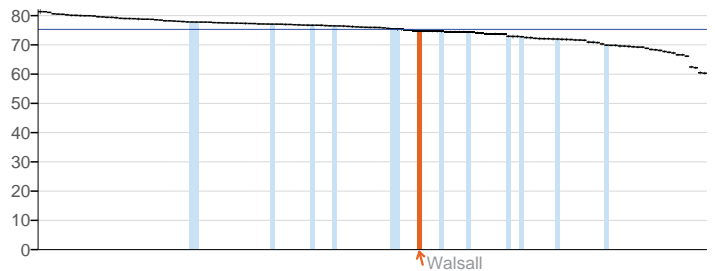
2.17. Recorded diabetes



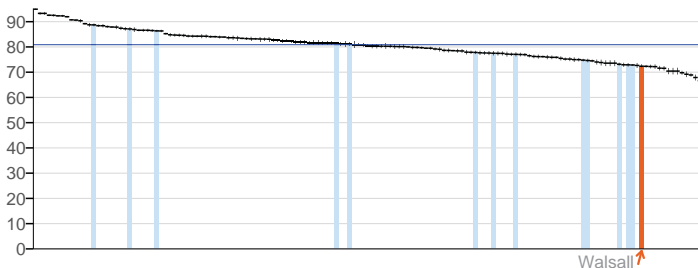
2.20i. Cancer screening coverage - breast cancer



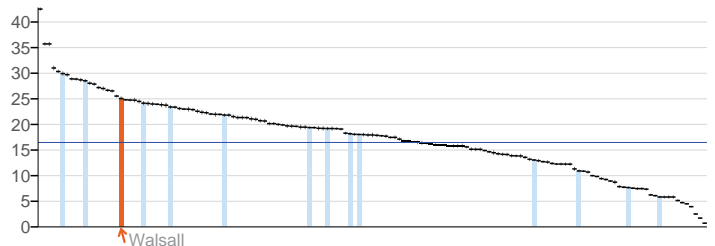
2.20ii. Cancer screening coverage - cervical cancer



2.21vii. Access to non-cancer screening programmes - diabetic retinopathy



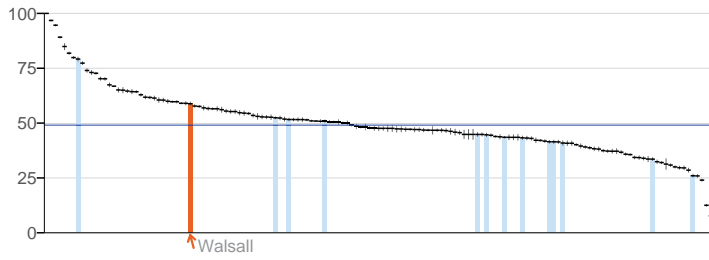
2.22i. Take up of NHS Health Check Programme by those eligible - health check offered



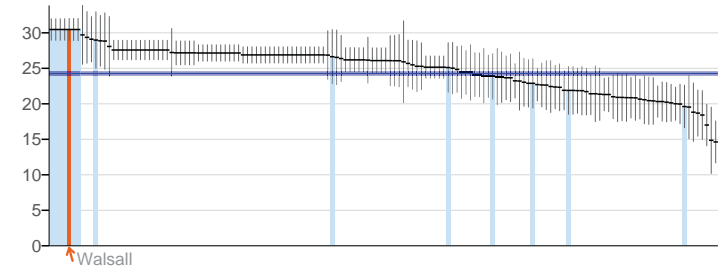
Key ■ England value and confidence interval ↑ Walsall ■ Other local authorities in West Midlands

Health improvement

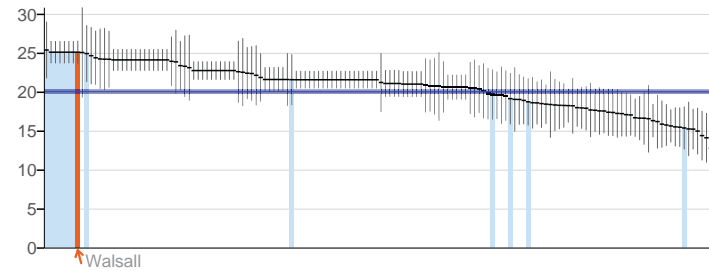
2.22ii. Take up of NHS Health Check programme by those eligible - health check take up



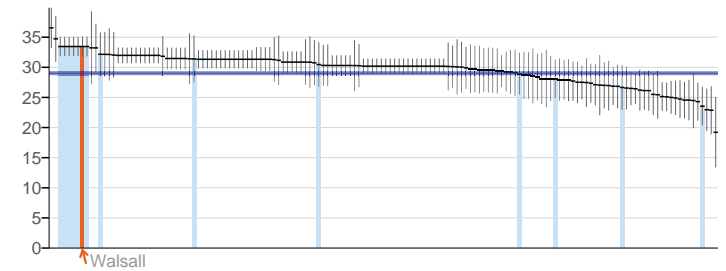
2.23i. Self-reported well-being - people with a low satisfaction score



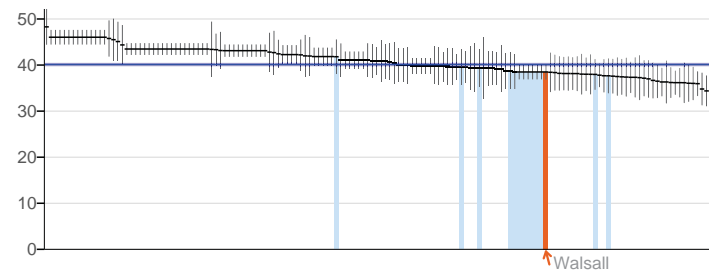
2.23ii. Self-reported well-being - people with a low worthwhile score



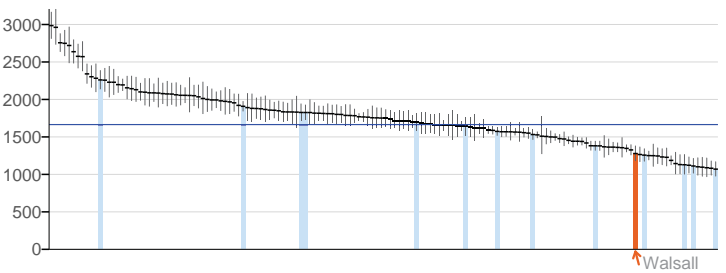
2.23iii. Self-reported well-being - people with a low happiness score



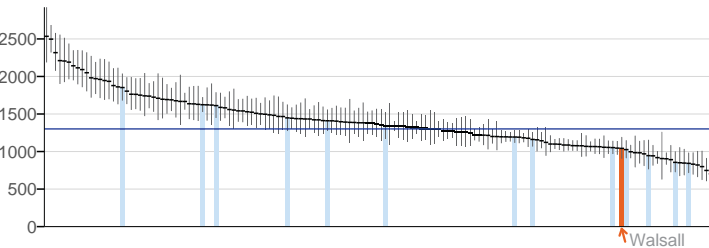
2.23iv. Self-reported well-being - people with a high anxiety score



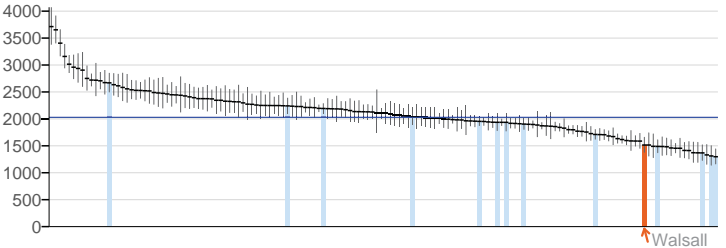
2.24i. Injuries due to falls in people aged 65 and over (Persons)



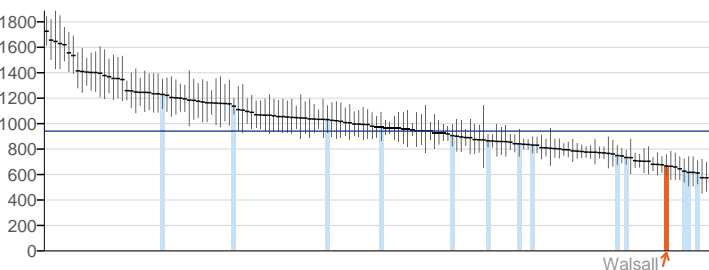
2.24i. Injuries due to falls in people aged 65 and over (males/females) - Male



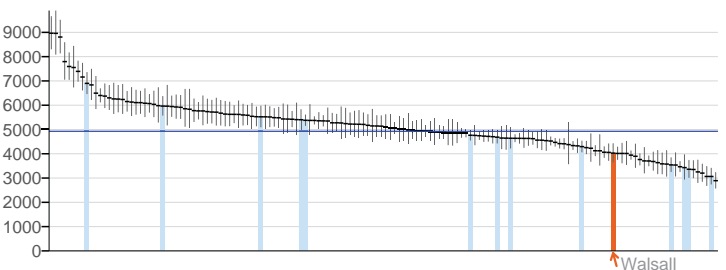
2.24i. Injuries due to falls in people aged 65 and over (males/females) - Female



2.24ii. Injuries due to falls in people aged 65 and over - aged 65-79



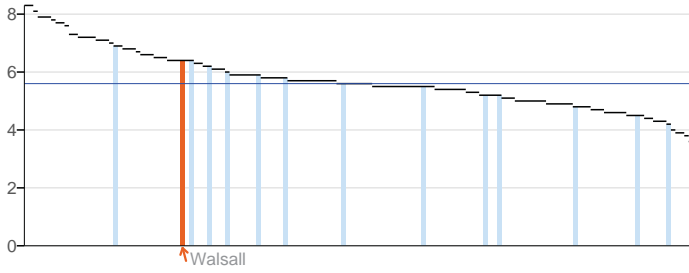
2.24iii. Injuries due to falls in people aged 65 and over - aged 80+



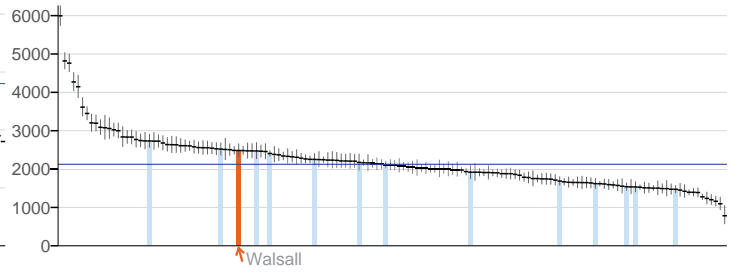
Key England value and confidence interval ↑ Walsall Other local authorities in West Midlands

Health protection

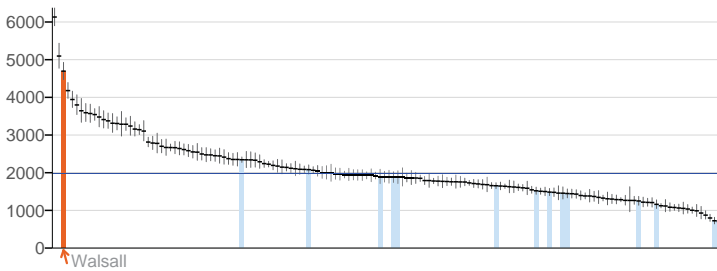
3.01. Fraction of mortality attributable to particulate air pollution



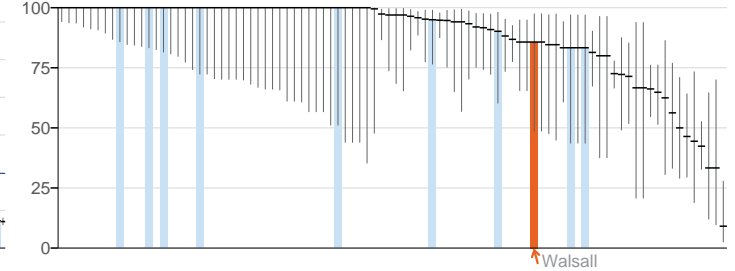
3.02i. Chlamydia diagnoses (15-24 year olds) - Old NCSP data



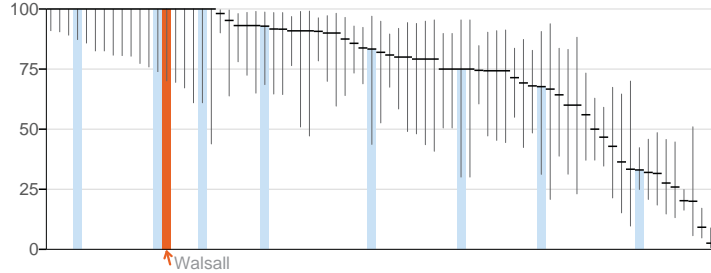
3.02ii. Chlamydia diagnoses (15-24 year olds) - CTAD



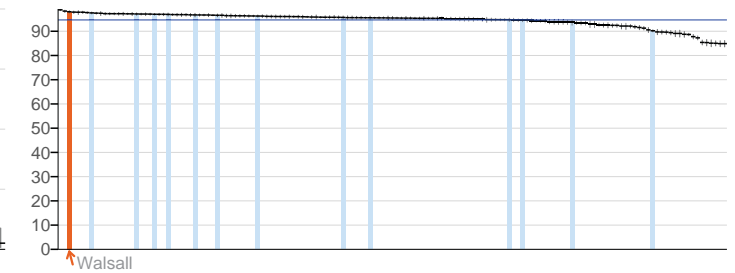
3.03i. Population vaccination coverage - Hepatitis B (1 year old)



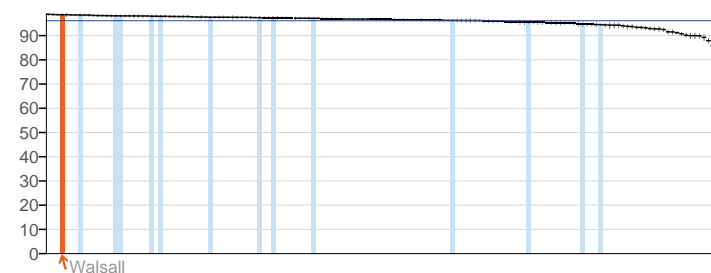
3.03i. Population vaccination coverage - Hepatitis B (2 years old)



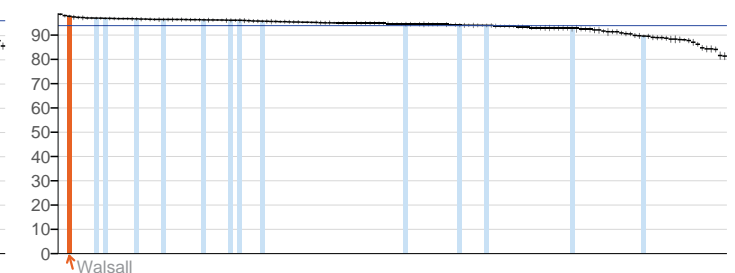
3.03iii. Population vaccination coverage - Dtap / IPV / Hib (1 year old)



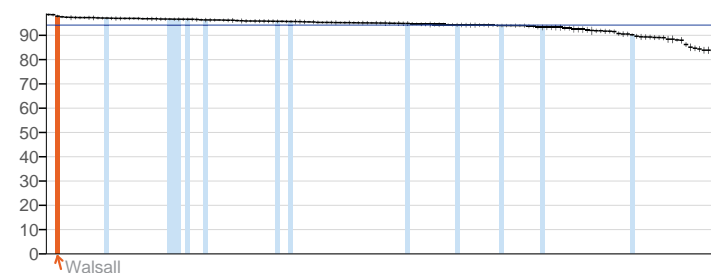
3.03iii. Population vaccination coverage - Dtap / IPV / Hib (2 years old)



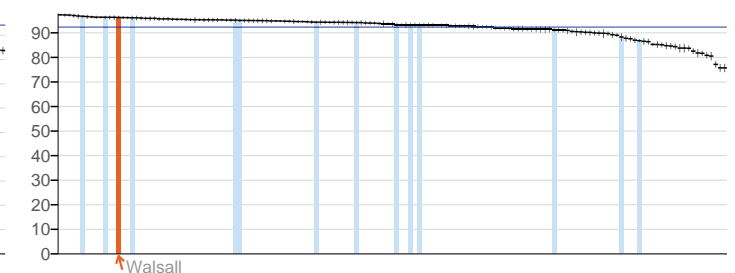
3.03iv. Population vaccination coverage - MenC



3.03v. Population vaccination coverage - PCV



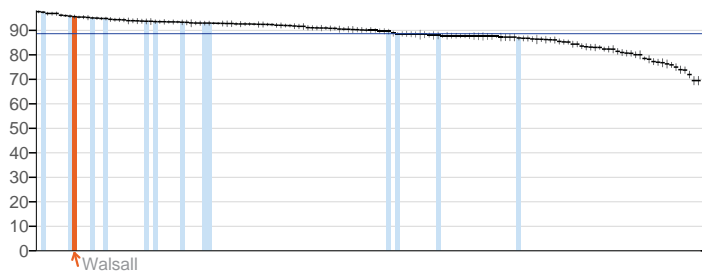
3.03vi. Population vaccination coverage - Hib / MenC booster (2 years old)



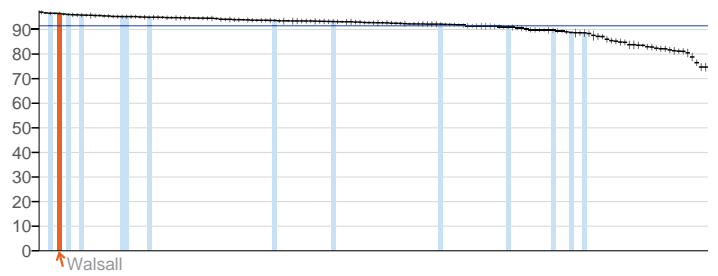
Key ■ England value and confidence interval ↑ Walsall ■ Other local authorities in West Midlands

Health protection

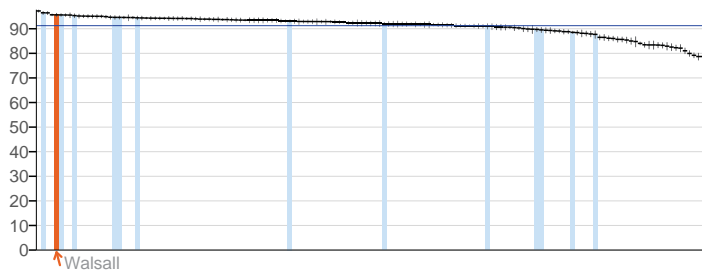
3.03vi. Population vaccination coverage - Hib / Men C booster (5 years)



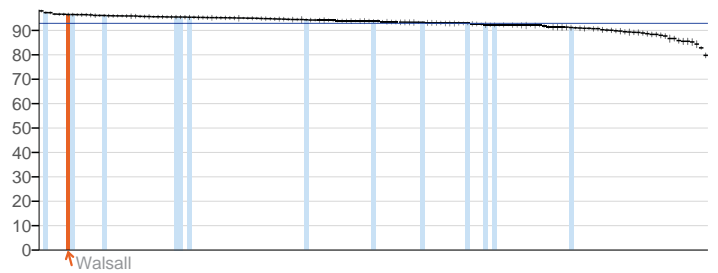
3.03vii. Population vaccination coverage - PCV booster



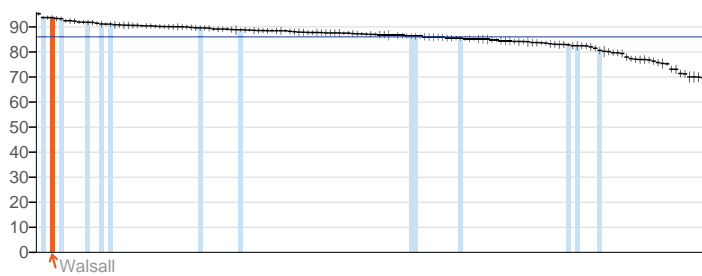
3.03viii. Population vaccination coverage - MMR for one dose (2 years old)



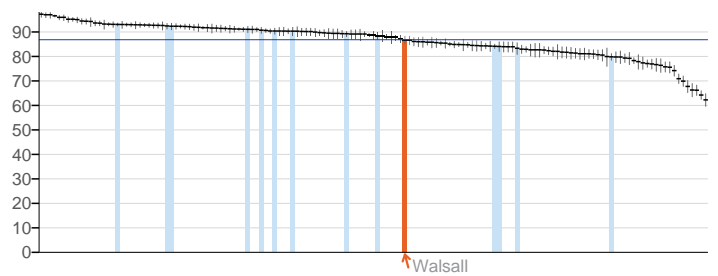
3.03ix. Population vaccination coverage - MMR for one dose (5 years old)



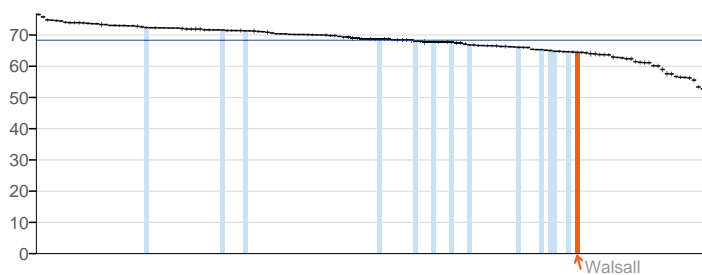
3.03x. Population vaccination coverage - MMR for two doses (5 years old)



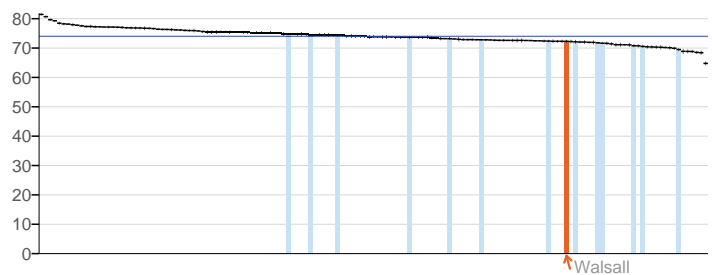
3.03xii. Population vaccination coverage - HPV



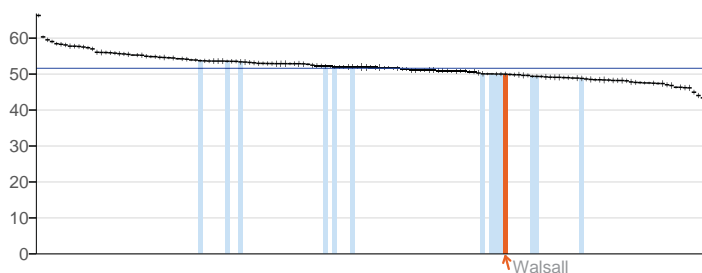
3.03xiii. Population vaccination coverage - PPV



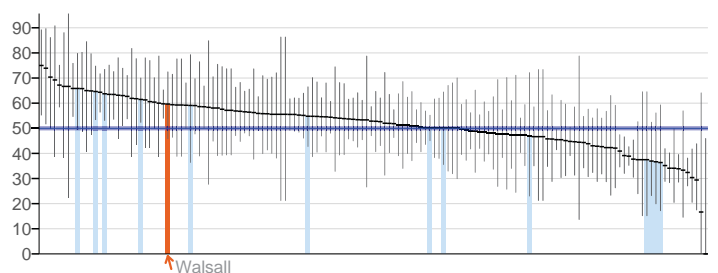
3.03xiv. Population vaccination coverage - Flu (aged 65+)



3.03xv. Population vaccination coverage - Flu (at risk individuals)



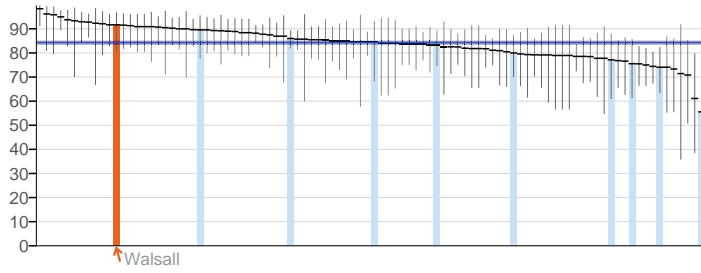
3.04. People presenting with HIV at a late stage of infection



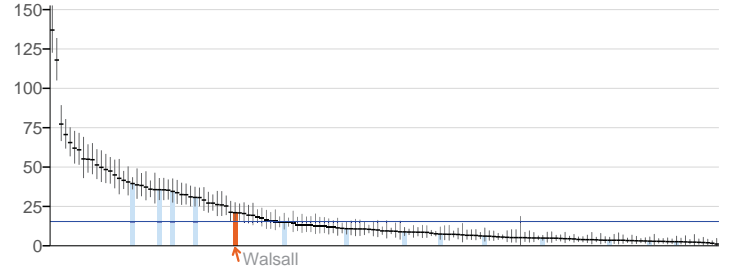
Key England value and confidence interval Walsall Other local authorities in West Midlands

Health protection

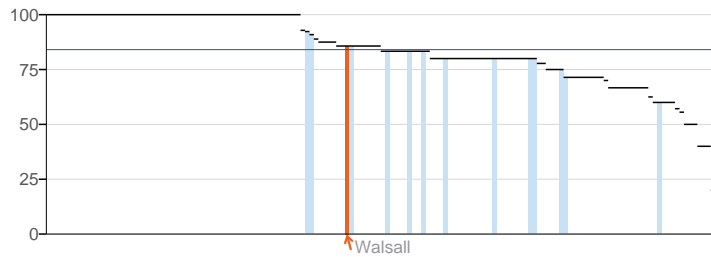
3.05i. Treatment completion for TB



3.05ii. Treatment completion for TB - TB incidence



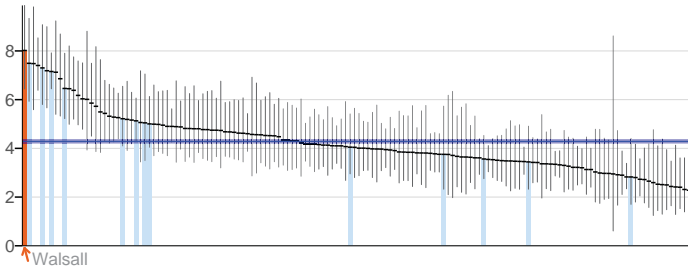
3.06. Public sector organisations with a board approved sustainable development management plan



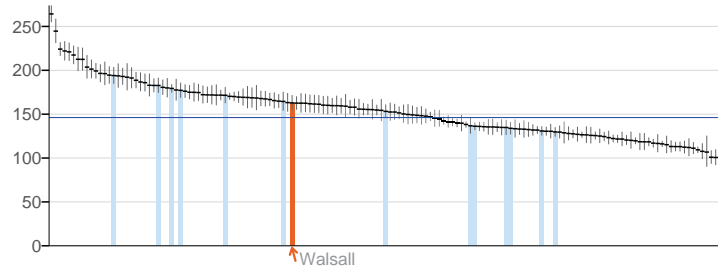
Key ■ England value and confidence interval ↑ Walsall ■ Other local authorities in West Midlands

Healthcare and premature mortality

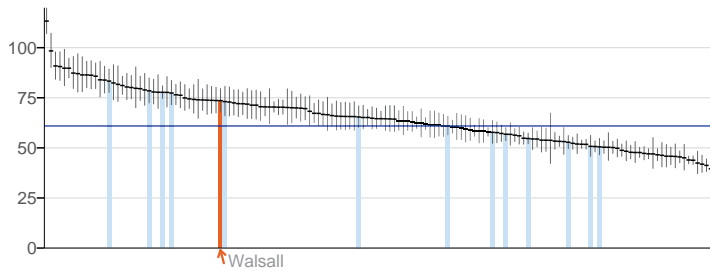
4.01. Infant mortality



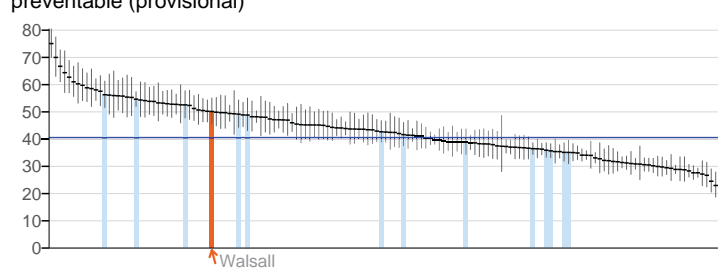
4.03. Mortality rate from causes considered preventable (provisional)



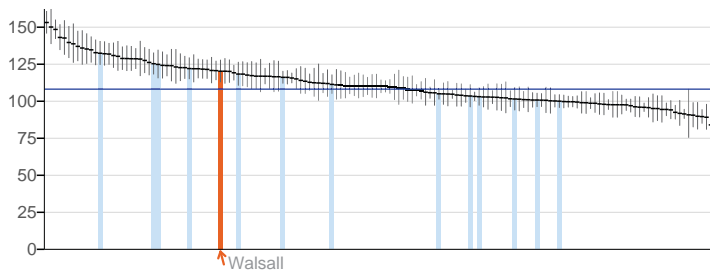
4.04i. Under 75 mortality rate from all cardiovascular diseases (provisional)



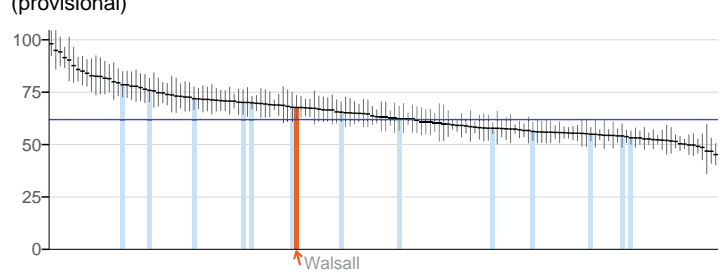
4.04ii. Under 75 mortality rate from cardiovascular diseases considered preventable (provisional)



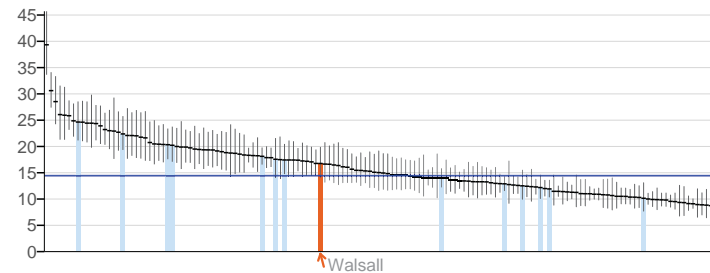
4.05i. Under 75 mortality rate from cancer (provisional)



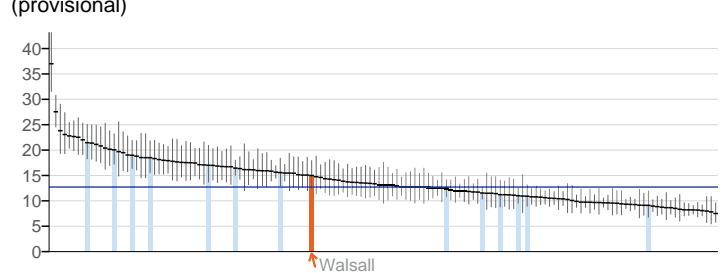
4.05ii. Under 75 mortality rate from cancer considered preventable (provisional)



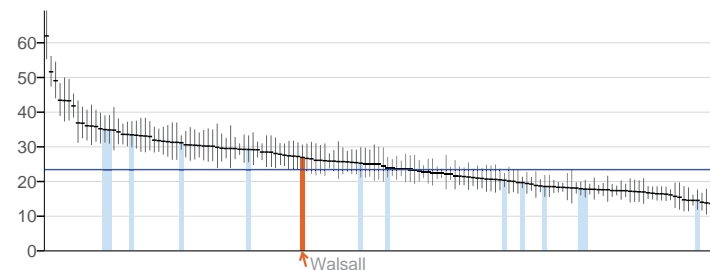
4.06i. Under 75 mortality rate from liver disease (provisional)



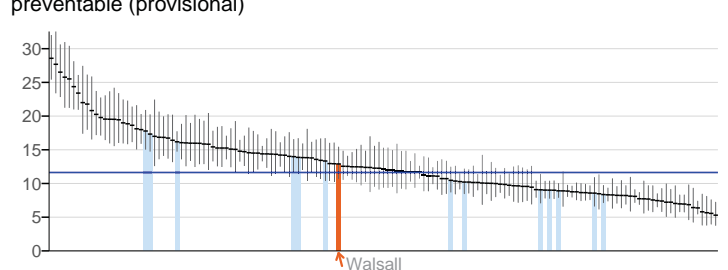
4.06ii. Under 75 mortality rate from liver disease considered preventable (provisional)



4.07i. Under 75 mortality rate from respiratory disease (provisional)



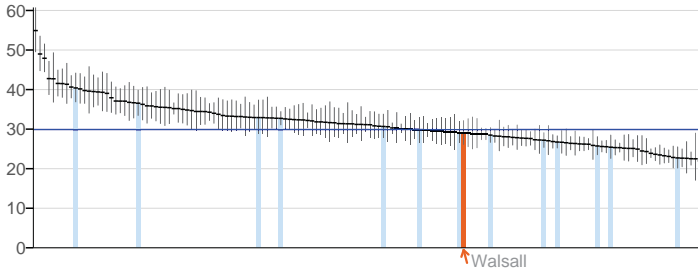
4.07ii. Under 75 mortality rate from respiratory disease considered preventable (provisional)



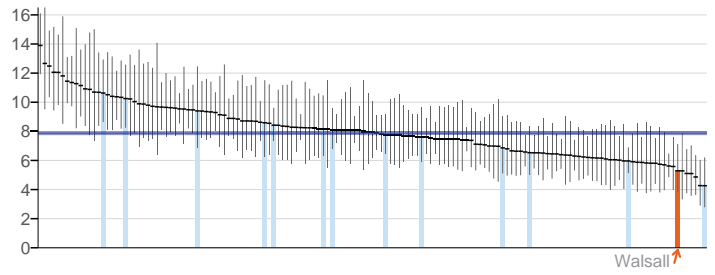
Key ■ England value and confidence interval ↑ Walsall ■ Other local authorities in West Midlands

Healthcare and premature mortality

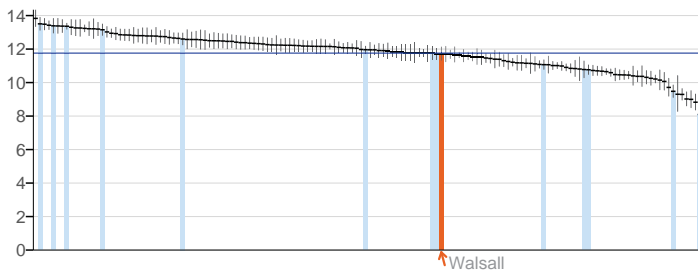
4.08. Mortality from communicable diseases (provisional)



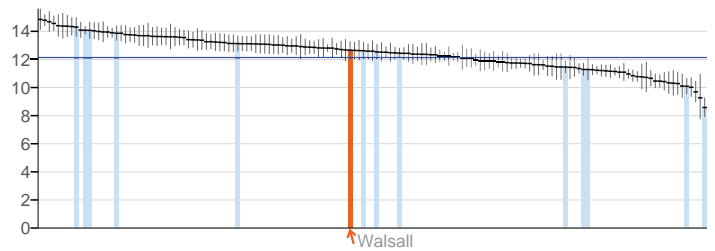
4.10. Suicide rate (provisional)



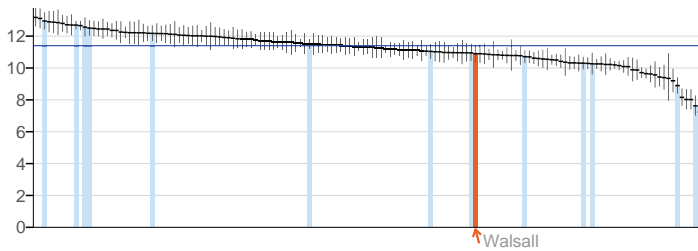
4.11. Emergency readmissions within 30 days of discharge from hospital



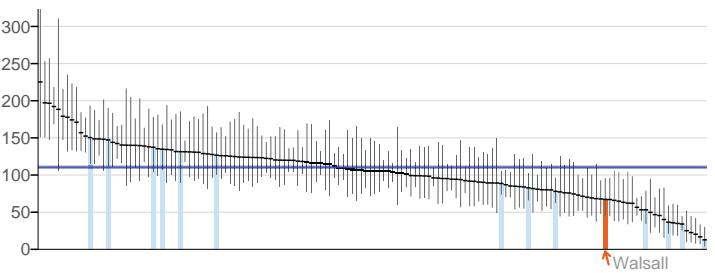
4.11. Emergency readmissions within 30 days of discharge from hospital - Male



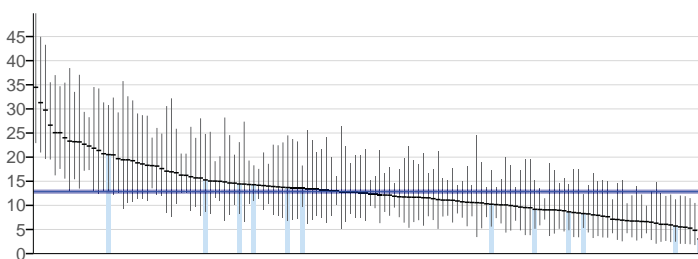
4.11. Emergency readmissions within 30 days of discharge from hospital - Female



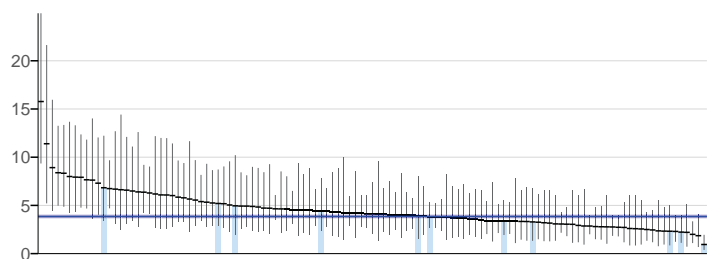
4.12i. Preventable sight loss - age related macular degeneration (AMD)



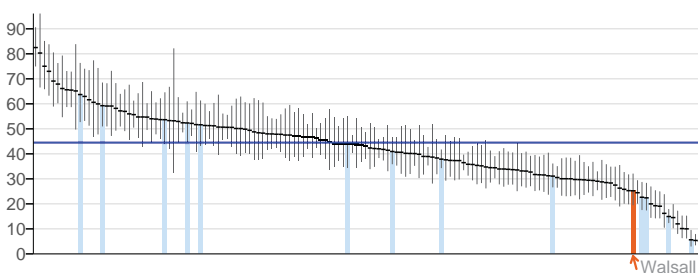
4.12ii. Preventable sight loss - glaucoma



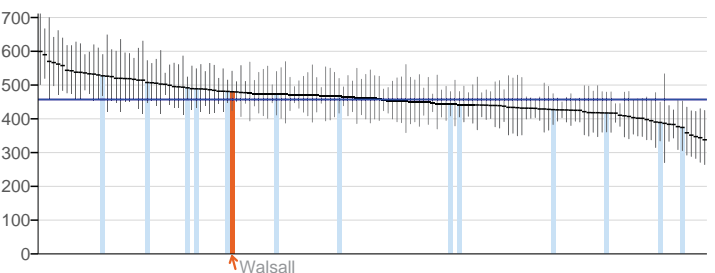
4.12iii. Preventable sight loss - diabetic eye disease



4.12iv. Preventable sight loss - sight loss certifications



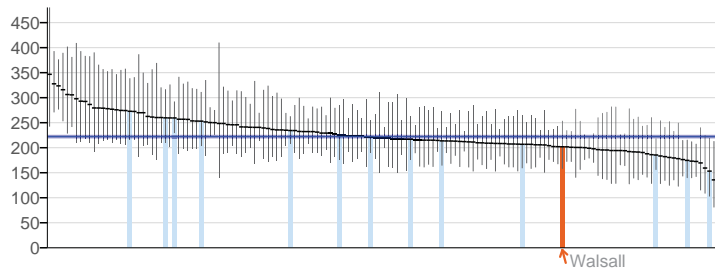
4.14i. Hip fractures in people aged 65 and over



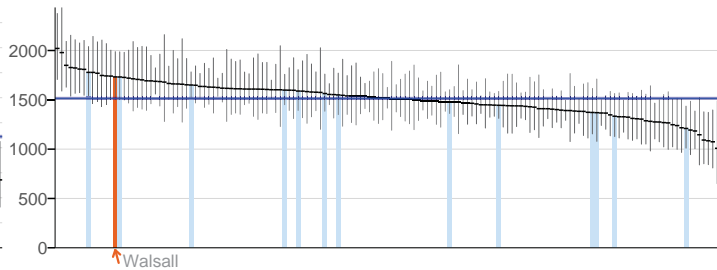
Key England value and confidence interval Walsall Other local authorities in West Midlands

Healthcare and premature mortality

4.14ii. Hip fractures in people aged 65 and over - aged 65-79



4.14iii. Hip fractures in people aged 65 and over - aged 80+



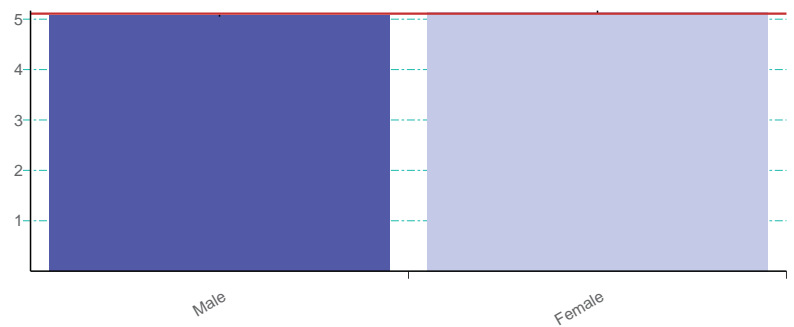
Key ■ England value and confidence interval ↑ Walsall + Other local authorities in West Midlands

Inequalities

The Public Health Outcomes Framework focuses the whole system on achieving positive health outcomes for the population and reducing inequalities in health. The majority of indicators in this framework have the potential to impact on inequalities and we aspire to make it possible for all indicators to be disaggregated by equalities characteristics and by socioeconomic analysis wherever possible in order to support work locally to reduce in-area health inequalities where these persist. However, in this first publication, as well as breaking down some of the local authority level indicators by gender or age, we are also presenting data by equalities characteristics for a small number of indicators at national level only. These indicators are presented in this section.

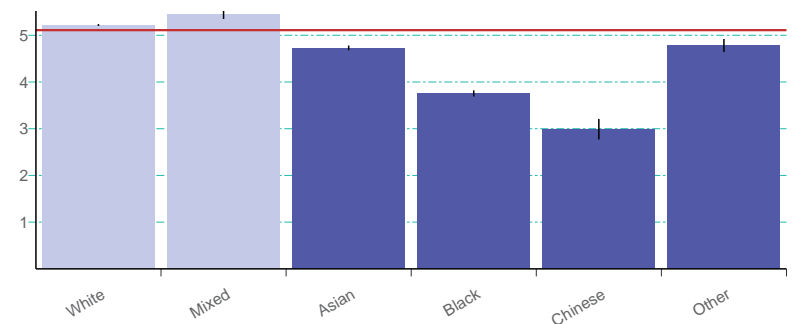
1.03 - Pupil absence - by gender England 2011/12

		Value	LCI	UCI
England	—	5.11	5.09	5.12
Male	●	5.07	5.05	5.09
Female	●	5.14	5.12	5.17



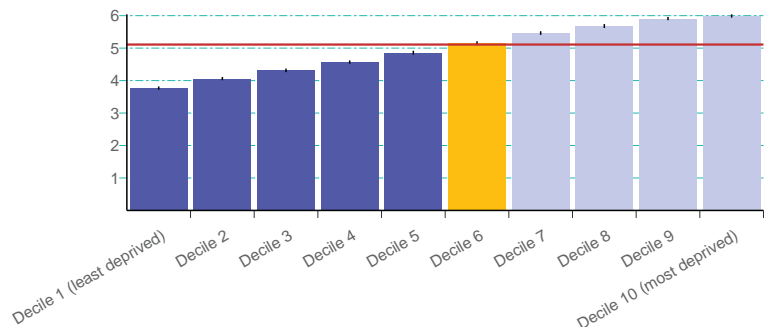
1.03 - Pupil absence - by ethnicity England 2011/12

		Value	LCI	UCI
England	—	5.11	5.09	5.12
White	●	5.22	5.20	5.24
Mixed	●	5.44	5.35	5.52
Asian	●	4.73	4.68	4.78
Black	●	3.75	3.69	3.82
Chinese	●	2.98	2.77	3.21
Other	●	4.78	4.64	4.92



1.03 - Pupil absence - by deprivation England 2011/12

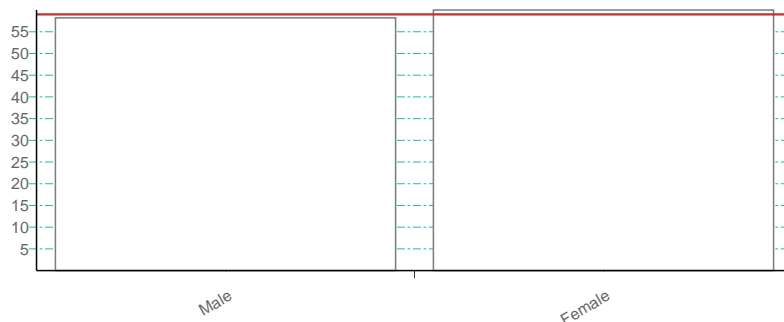
		Value	LCI	UCI
England	—	5.11	5.09	5.12
Decile 1 (least deprived)	●	3.77	3.72	3.82
Decile 2	●	4.06	4.01	4.11
Decile 3	●	4.32	4.26	4.37
Decile 4	●	4.57	4.52	4.62
Decile 5	●	4.86	4.80	4.92
Decile 6	●	5.15	5.09	5.21
Decile 7	●	5.47	5.41	5.52
Decile 8	●	5.68	5.62	5.74
Decile 9	●	5.91	5.86	5.96
Decile 10 (most deprived)	●	5.99	5.94	6.04



Key: ● Significantly lower ● Similar ● Significantly higher

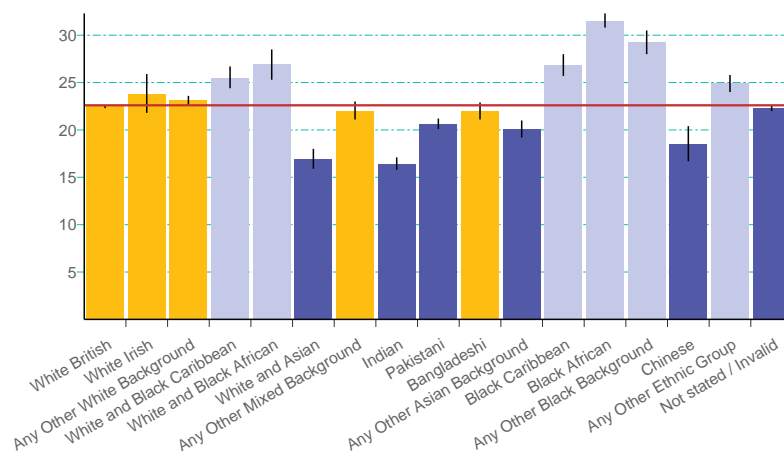
1.06i - Percentage of all adults with learning disabilities who are known to the council, who are recorded as living in their own home or with their family - by gender England 2011/12

	Value	LCI	UCI
England	59.00	-	-
Male	58.20	-	-
Female	60.00	-	-



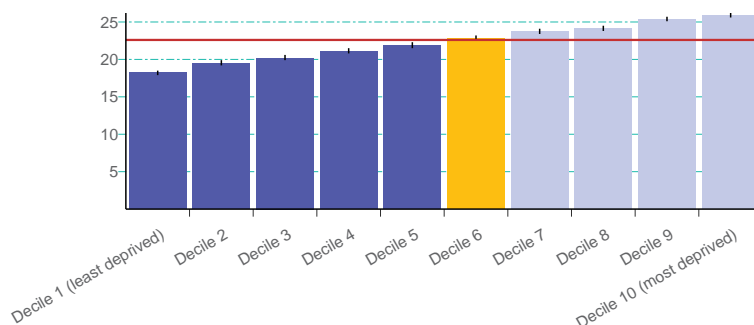
2.06i - Percentage of children aged 4-5 classified as overweight or obese - by ethnicity England 2011/12

	Value	LCI	UCI
England	22.60	22.50	22.70
White British	22.50	22.30	22.60
White Irish	23.80	21.80	25.90
Any Other White Background	23.10	22.60	23.60
White and Black Caribbean	25.50	24.40	26.70
White and Black African	26.90	25.30	28.50
White and Asian	16.90	15.90	18.00
Any Other Mixed Background	22.00	21.10	23.00
Indian	16.40	15.80	17.10
Pakistani	20.60	20.10	21.20
Bangladeshi	22.00	21.10	22.90
Any Other Asian Background	20.10	19.20	21.00
Black Caribbean	26.80	25.70	28.00
Black African	31.50	30.80	32.30
Any Other Black Background	29.30	28.00	30.50
Chinese	18.50	16.70	20.40
Any Other Ethnic Group	24.90	24.00	25.80
Not stated / Invalid	22.30	22.00	22.60



2.06i - Percentage of children aged 4-5 classified as overweight or obese - by deprivation England 2011/12

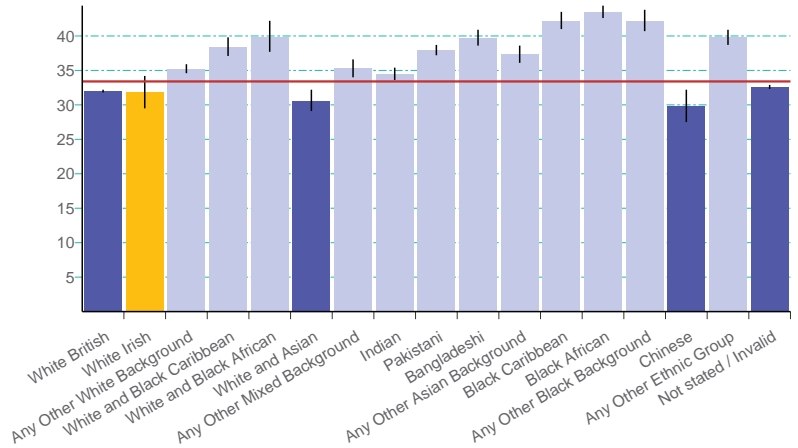
	Value	LCI	UCI
England	22.60	22.50	22.70
Decile 1 (least deprived)	18.20	17.90	18.50
Decile 2	19.50	19.20	19.90
Decile 3	20.20	19.90	20.60
Decile 4	21.10	20.80	21.50
Decile 5	21.90	21.50	22.30
Decile 6	22.80	22.50	23.20
Decile 7	23.70	23.40	24.10
Decile 8	24.20	23.80	24.50
Decile 9	25.40	25.10	25.70
Decile 10 (most deprived)	25.90	25.60	26.20



Key: ● Significantly lower ● Similar ● Significantly higher

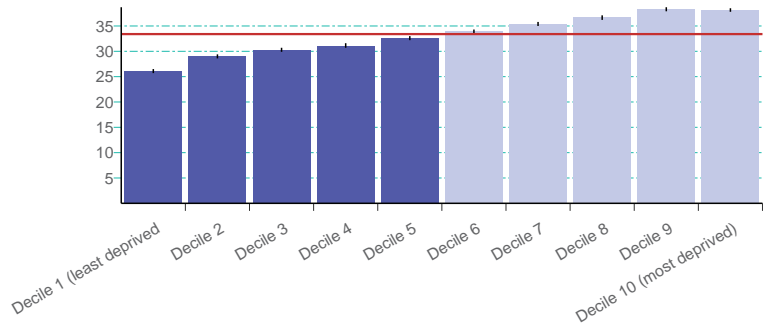
2.06ii - Percentage of children aged 10-11 classified as overweight or obese - by ethnicity England 2011/12

	Value	LCI	UCI
England	33.40	33.30	33.50
White British	32.00	31.80	32.20
White Irish	31.80	29.50	34.20
Any Other White Background	35.20	34.60	35.90
White and Black Caribbean	38.40	37.10	39.80
White and Black African	39.90	37.70	42.20
White and Asian	30.60	29.10	32.20
Any Other Mixed Background	35.30	34.00	36.60
Indian	34.50	33.60	35.40
Pakistani	37.90	37.20	38.70
Bangladeshi	39.70	38.60	40.90
Any Other Asian Background	37.30	36.10	38.60
Black Caribbean	42.20	41.00	43.50
Black African	43.50	42.60	44.40
Any Other Black Background	42.20	40.70	43.80
Chinese	29.80	27.50	32.20
Any Other Ethnic Group	39.80	38.70	40.90
Not stated / Invalid	32.60	32.30	32.90



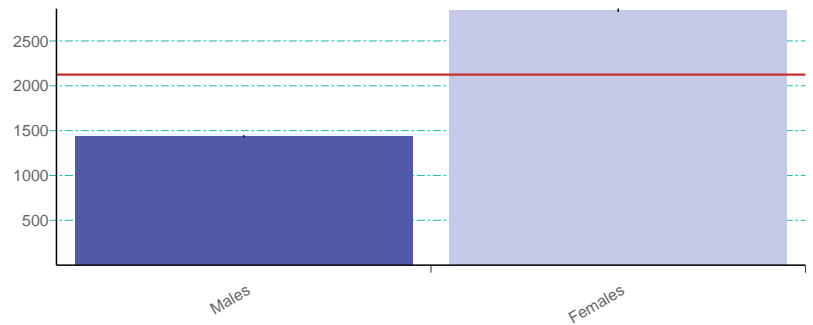
2.06ii - Percentage of children aged 10-11 classified as overweight or obese - by deprivation England 2011/12

	Value	LCI	UCI
England	33.40	33.30	33.50
Decile 1 (least deprived)	26.10	25.70	26.50
Decile 2	29.00	28.60	29.40
Decile 3	30.30	29.90	30.70
Decile 4	31.10	30.70	31.60
Decile 5	32.60	32.20	33.00
Decile 6	33.90	33.40	34.30
Decile 7	35.40	35.00	35.80
Decile 8	36.70	36.20	37.10
Decile 9	38.30	37.90	38.70
Decile 10 (most deprived)	38.10	37.80	38.50



3.02 - Chlamydia diagnosis (15-24 year olds) - by gender England 2011

	Value	LCI	UCI
England	2,125	2,114	2,136
Males	1,438	1,425	1,450
Females	2,843	2,825	2,861



Key: ● Significantly lower ● Similar ● Significantly higher