



**DARLASTON LOCAL NEIGHBOURHOOD  
PARTNERSHIP**

**28 September 2004**

**AGENDA  
ITEM:**

**TRANSFORMING YOUR SPACE PROGRAMME**

**Ward(s):** Darlaston Local Neighbourhood Partnership boundary area.

**Portfolio:** Councillor A. Andrew

**Service Area: Urban Regeneration**

**Summary of Report:**

This report outlines Walsall's Transforming Your Space Programme (TYS).

TYS is a "Big Lottery Fund", formerly New Opportunities Fund (NOF), initiative of environmental projects and play and youth schemes across the borough of Walsall. The programme consists of 14 large projects which are all due to be complete by September 2006. YYS has and will continue to work in partnership with the Local Strategic Partnership (LSP), Community Empowerment Network (CEN), and local groups and residents. The programme totals just over £2.7 million in funding, with £1.7 million of this being secured from the Big Lottery Fund.

This report provides details of the YYS projects due to be implemented in the Darlaston LNP area and seeks authority for the proposals to be included in the final local neighbourhood plan.

**Background Papers:**

Transforming Your Space Programme Cabinet Report – 16<sup>th</sup> October 2002.  
Transforming Your Space Programme Cabinet Report – 08<sup>th</sup> September 2004.

**Recommendations**

- To note details of the Transforming Your Space Programme in Walsall.
- To endorse the proposals detailed for the Darlaston LNP and include these in the final local neighbourhood plan.

## **Resource and Legal Considerations**

Transforming Your Space is a Big Lottery Fund grant of £1,748,294. With match funding, the programme totals approximately £2.7 million.

There are no known legal considerations, other than the sealing of individual contracts exceeding £100,000.

## **Citizen Impact**

The TYS programme will have a borough wide impact and will benefit a broad range of Walsall's population. In particular, young people will directly benefit through access to improved play and recreational facilities.

## **Environment Impact**

The programme includes environmental improvement projects and improvements to play and youth facilities, therefore there will be a positive impact on the environment.

## **Performance Management and Risk Management Issues**

The TYS programme contributes to the Environmental Regeneration Service objective to "developing and delivering a range of environmental regeneration initiatives which improve the quality of life for people in the borough."

Risk Management Issues:

### **Risk**

Failure to obtain LNP approval for the inclusion of TYS projects in their final local neighbourhood plan: This risk is considered to be low given the extent to which local people and existing partners have been involved in the development process for the TYS programme.

## **Equality Implications**

The TYS programme will have a borough wide impact, ensuring that every part of Walsall sees some form of activity.

The processes used to identify the TYS projects have been scrutinised by the borough's CEN.

## **Consultation**

To date the programme has been developed in consultation with local communities, the

LSP (in particular the Housing and Environment Theme Group), the borough CEN, Friend of Parks groups and all the former District Committees. These and other groups will continue to play an important part in the programme.

### **Vision 2008**

The programme will contribute to the following Council Priorities, identified in Vision 2008:

- Ensure a clean & green borough
- Ensure all people are safe & secure
- Make Walsall a healthy and caring place
- Encourage everyone to feel proud of Walsall
- Make it easier to access local services
- Listen to what people want

### **Contact Officers:**

Steve Lewis  
Head of Environmental Regeneration  
Ext. 2534  
[Lewiss@walsall.gov.uk](mailto:Lewiss@walsall.gov.uk)

Kauser Agha  
Transforming Your Space Coordinator  
Ext.2538  
[Aghak@walsall.gov.uk](mailto:Aghak@walsall.gov.uk)

## **1. PURPOSE OF REPORT**

- 1.1 To inform the Darlaston LNP about the Transforming Your Space (TYS) programme in Walsall.
- 1.2 To provide details of the YYS projects due to be implemented in the Darlaston LNP area.
- 1.3 To seek the Darlaston LNPs approval for the YYS projects to be included within their final local neighbourhood plan.

## **2. THE TRANSFORMING YOUR SPACE PROGRAMME**

- 2.1 The Big Lottery Fund, formerly The New Opportunities Fund (NOF), allocated £1.7 million to Walsall Council under its Fair Share Initiative in October 2002. The Fair Share Initiative was launched in recognition that not all parts of the Country were receiving their "fair share" of lottery funding. The allocation was made following the successful submission of an umbrella scheme for Walsall that would target not only the 11 priority areas identified by the Walsall Borough Strategic partnership (WBSP) (strand 1 – environmental improvement projects in WBSP "priority neighbourhoods") but also the whole borough (strand 2 – borough wide play and youth schemes). This was stage 1 of the application process.
- 2.2 Stage 2 of the application process involved the submission of a portfolio of projects to NOF by 31<sup>st</sup> August 2003. Part of the criteria for the submission included the endorsement of the portfolio by the Local Strategic Partnership (LSP) prior to 31<sup>st</sup> August. This deadline was met by working in partnership with the LSP, Community Empowerment Network (CEN) and local community organisations. The LSP endorsed the portfolio at their meeting on 18<sup>th</sup> August 2003. Prior to this, the projects were appraised by the LSP's Housing and Environment Theme Group, and the processes used were scrutinised by the CEN to ensure that all projects had been inclusive and developed in partnership with the local community (a condition set by the Big Lottery Fund). All the former District Committees endorsed the strand 2 package in April 2003.
- 2.3 The portfolio of projects, approved by the Big Lottery Fund in November 2003, includes 14 large projects ranging from environmental improvement proposals to improved play and youth facilities across all six of the former District Committee areas.
- 2.4 Progress to date
  - 2.4.1 Of the 14 projects, 2 pilot projects, Caldmore Junior School Multi-Sports Provision (strand 1) and the Walsall District and Town Centre Project (a package of 7 schemes: Arboretum, Beechdale Park, Pleck Park, Palfrey Park, Reedswood Park, Silverdale Park and WS2 Skate Park) (strand 2) have been developed and are anticipated to be on site during autumn 2004. The remaining 12 projects will then be developed and implemented in accordance with the timetable approved by the Big Lottery Fund, with all projects being complete by September 2006 (a grant condition).

### **3. THE VISION**

3.1 TYS contributes to Walsall's Vision for 2008, relating to 6 of the 10 identified priorities:

- Ensure a clean and green borough – the implementation of the planned projects will encourage people to take pride in their open spaces, parks, and general environment. The TYS process has and will continue to increase community participation in Walsall's parks.
- Ensure all people are safe & secure – the improvement of key sites will help increase safety and thus encourage more people to use the facilities. It is also hoped that the new/improved facilities for young people, such as multi use games areas, will provide diversionary activities for this vulnerable age group.
- Make Walsall a healthy and caring place – better recreational facilities will encourage people to use these more often, promoting interaction and well-being. Enhanced facilities will also encourage the young to participate in energetic activities, helping reduce obesity in the borough.
- Encourage everyone to feel proud of Walsall – the £2.7 million investment will help improve Walsall's image.
- Make it easier to access local services – the planned improvements will make it easier for people to access their local green/open spaces, parks and play areas. One of the key issues each project will look at is access; every effort will be made to ensure that as many sections of the community can use the improved facilities.
- Listen to what local people want – TYS is a community led programme, which will continue to involve and listen to local people. The CEN has also been involved in scrutinising the processes used for community engagement.

### **4. TYS LAUNCH**

4.1 To celebrate and publicise the award, inform people about the forthcoming projects, and highlight the importance of the programme for Walsall and its community; the TYS programme was 'launched' in the Town Hall on Friday 16<sup>th</sup> July 2004. The event was hosted by Chief Executive Annie Shepperd and was attended by Bruce George MP, Richard Shepherd MP, Ward Councillors, community representatives, Council Officers and representatives from the Big Lottery Fund.

### **5. TYS WEBSITE**

5.1 A website for TYS has been developed and was launched on 16<sup>th</sup> July. The website will not only inform people about the programme but will also act as a major consultation tool, enabling project specific comments to be made directly via email. Subsequently, the website has been commended by the Big Lottery Fund as an example of good practice. The address for the site is [www.walsall.gov.uk/tys/](http://www.walsall.gov.uk/tys/). Details of all the projects can be found on the site, including project description, sketch schemes and site photos. The website will become a living record of the Programme.

## **6. TYS PROJECTS IN THE DARLASTON LNP AREA**

6.1 The approved TYS proposals for the Darlaston LNP area are detailed below. The sketch schemes for these proposals are attached in appendix 1.

### **6.2 George Rose Park Improvements**

6.2.1 The project will provide new facilities for George Rose Park: a new play area visible from Wolverhampton Street (the existing play area will be returned to grass), a multi sports pitch (for football and Basketball), an equipped skate park, new pathways to the facilities and the installation of a crossing facility across Wolverhampton Street to provide safer access, in particular, for the Rough Hay community.

6.2.2 The proposals outlined above were identified by representatives on the strand 1 TYS steering group and later endorsed by the community via consultation events organised by Groundwork Walsall.

6.2.3 It is anticipated that work will begin on site in July 2005 and be complete in October 2005. Preceding this, there will be a detailed consultation/engagement stage which will ensure that the final designs still meet the requirements of the community. Various methods will be utilised including displays in libraries and other community facilities and the TYS website. LNP members will be informed of consultation events taking place during the detailed design stage for the project and invited to take part.

### **6.3 The Barn, Bentley**

6.3.1 Located to the rear of Bentley Youth Centre in Wilkes Avenue, the Barn is a well used sports facility in need of refurbishment. Proposals include replacement of the existing roof and floor, new heating system and lights and cavity walls.

6.3.2 Again, the proposals outlined for the Barn were identified by representatives on the TYS strand 1 steering group and later endorsed by the community via consultation events organised by Groundwork Walsall.

6.3.3 Work is due on site in March 2005 and expected to be completed in July 2005. The project is currently in its detailed consultation/engagement stage which will ensure that the final design still meets the requirements of the community. Various methods have and will be utilised including a local steering group, displays in libraries and other community facilities and the TYS website. LNP members will be informed of consultation events taking place in October and invited to take part.

### **6.4 Darlaston District Project**

6.4.1 The schemes that form most of the Darlaston District Project were identified as a result of feedback from parents and young people, Friends of Parks groups and along with other schemes and projects within strand 2 by a working group of Officers. The criteria used included:

- Existing provision
- Representation/deputations received from residents
- Officer knowledge of sites
- An equal split of TYS funding across the old District Committees

In April 2003 all the former District Committees approved all the strand 2 projects.

#### 6.4.2 Broadwaters Road Play Area, Victoria Mews Play Area and Kingshill Park

The current play areas will be refurbished by providing new equipment, safety surfacing and fencing.

#### 6.4.3 Bentley New Centre

Funding is available for the provision of mobile play equipment; however, details of the scheme will be determined through consultation with residents and users of the Bentley New Centre.

6.4.4 The Darlaston District schemes are anticipated to be on site in July 2005 and complete in approximately October 2005. Preceding this, there will be a detailed consultation/engagement stage which will ensure that the final designs still meet the requirements of the community. Various methods will be utilised including: displays in libraries and other community facilities, friends groups, open/fun days in parks, on-site consultation and the TYS website. LNP members will be informed of consultation events taking place during the detailed design stage for the project and invited to take part.

### 7. RISK MANAGEMENT ISSUES

7.1 Risk 1 - Failure to obtain LNP approval for the inclusion of TYS projects in the final local neighbourhood plan: This risk is considered to be low given the extent to which local people and existing partners have been involved in the development process for the TYS programme.

### 8. SUMMARY

8.1 TYS represents large scale environmental regeneration for Walsall borough and will contribute to improving people's quality of life.

In summary, Darlaston LNP is asked to:-

- Note details about the TYS Programme.
- Endorse and include the TYS proposals within the final local neighbourhood plan.

**Appendix 1**

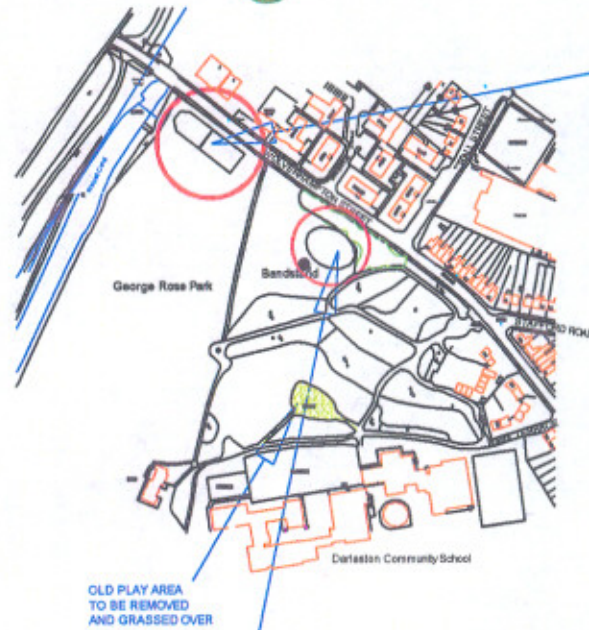
**TYS Sketch Schemes**



**Appendix 1**

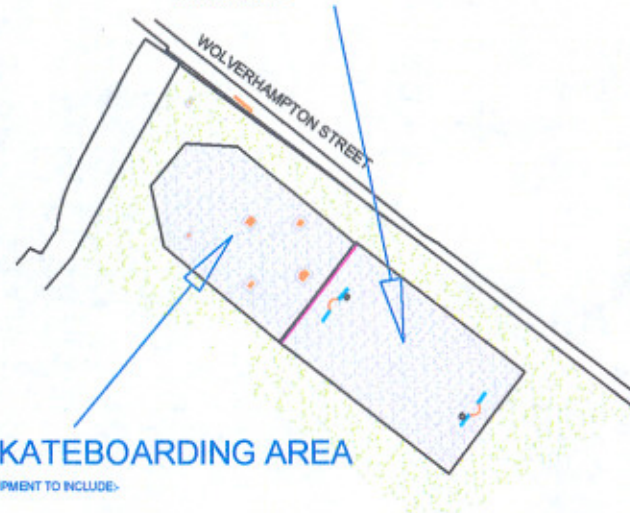
**TYS Sketch Schemes**

# George Rose Park



## KEY TO MULTISPORTS PITCH

- TARMAC
- 1.2M BOW TOPPED STEEL FENCE TO DIVIDE AREA
- FOOTBALL GOAL AND BASKETBALL HOOP UNITS WITH STEEL MESH REBOUND PANELS



## KEY TO SKATEBOARDING AREA

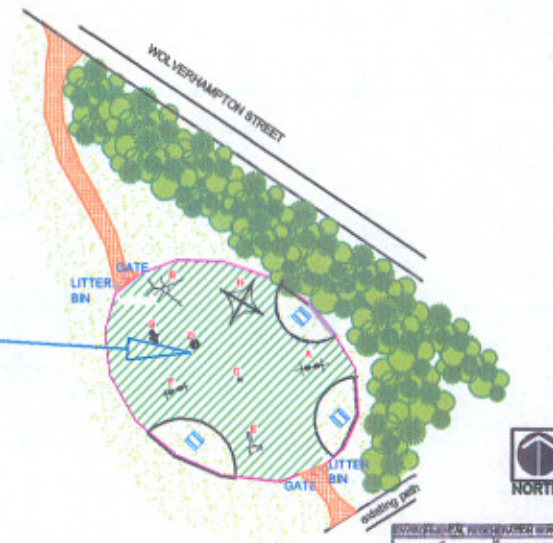
TARMAC SURFACE, EQUIPMENT TO INCLUDE:  
 STEPPED GRINDBOX  
 GRINDRAIL  
 FLATBANKS  
 QUARTER PIPE  
 HALL DRIVEWAY WITH GRIND PYRAMID

## KEY TO NEW PLAY AREA

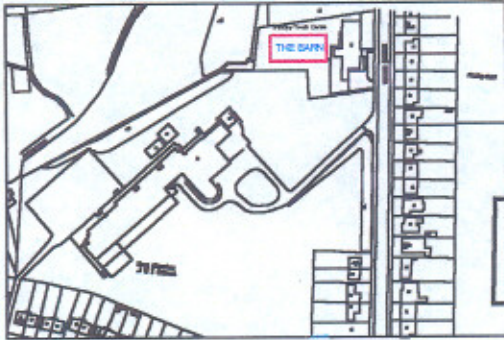
### PROPOSED PLAY EQUIPMENT

- A WICKSTEED 2.45M HIGH SWINGS WITH SAFETY SEATS AND GUARDS
- B KOMPAN 'ANTARES' MULTI UNIT
- C SUTCLIFFE LOW ROTATOR
- D SUTCLIFFE DISH ROUNDABOUT
- E RECORD 'POPPY' PLAYHOUSE
- F WICKSTEED DOUBLE ARCH 1.8M HIGH SWINGS WITH CRADLE SEATS
- G HAGS 'MULTI PONDO' SEESAW
- H RECORD 4 M HIGH ACTIVITY NET

- WET POUR RUBBER SAFETY SURFACING
- TARMAC PATHS
- 1 METRE HIGH STEEL BOWTOP FENCE & TWO 1M HIGH SELF CLOSING GATES
- STEEL PICNIC TABLES



# Plan & Location



Roof finish to be replaced with steel, polyester powder coated & insulated double skin roof covering including double skinned roof lights to allow daylight in to hall.



South Elevation

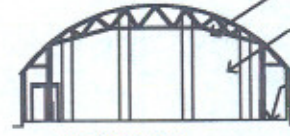


West Elevation

NOTE:  
STRUCTURAL ENGINEER TO BE APPOINTED TO DO  
STRUCTURAL SURVEY & ASSESSMENT OF EXISTING  
STEEL STRUCTURE.



Section B-B



Section A-A

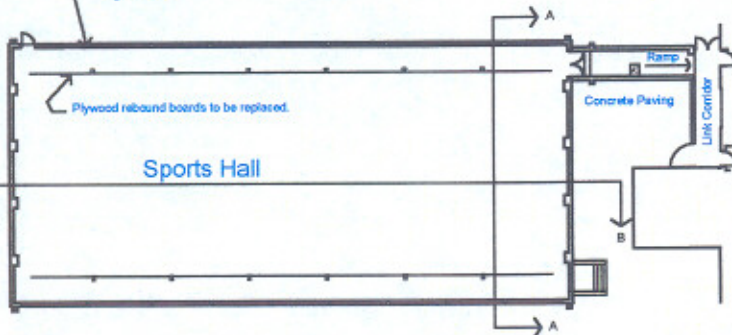
New lighting system to be installed to give good level of illumination for activities after daylight hours.

New heating system to be installed to give comfortable environment during winter.

Floor to be excavated & replaced with damp proofed concrete sub-floor, on top of which will be a sprung hardwood floor suitable for sports activities.

External walls re-built to include insulation to current building regulations.

Plywood rebound boards to be replaced.



Plan

Architectural Services  
100-102, High Street, Walsall, West Midlands, B79 4JL  
Tel: 0121 255 1234



## BENTLEY YOUTH AND COMMUNITY CENTRE

Job No:	NTS	Date:	JUL03	Drawn:	HP
Client:	Walsall Metropolitan Borough Council				
Project:	Bentley Youth and Community Centre				
Drawn by:					

BUILDING DESIGN UNIT, 20 HIGH FOREST ROAD, BIRCHOPF, WALSALL, WVS 3JL. TEL: 0121 255 1234

# Broadwaters Road Play Area - Proposals



The existing site

## KEY



WET POUR RUBBER SAFETY SURFACING



1.2M HIGH BOW TOPPED FENCE AND SELF CLOSING GATES



TIDDLER 1B MULTI UNIT



WICKSTEED 2.4M HIGH CRADLE SWINGS



SPRINGY ANIMAL



NORTH

Environmental Regeneration Services Ltd. is a registered company in the United Kingdom. Registered Office: 10, Broadwaters Road, Broadwaters, Walsby, Lincolnshire, LN11 8JL. Telephone: 01509 261111. Fax: 01509 261112. Email: info@ers.co.uk. Website: www.ers.co.uk

ENVIRONMENTAL REGENERATION SERVICES

10 Broadwaters Road, Broadwaters, Walsby, Lincolnshire, LN11 8JL

01509 261111

01509 261112

info@ers.co.uk

www.ers.co.uk

Sketch Scheme

DATE: 15/01/2010

SCALE: 1:500

PROJECT: BROADWATERS ROAD PLAY AREA

# Victoria Mews Play Area - Proposals



The existing site

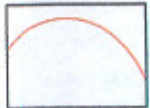
## KEY



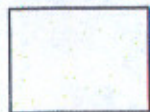
LOWER BRANCHES  
REMOVED FROM  
RETAINED TREES



SURROUNDING SHRUBS  
SELECTIVELY REMOVED  
FOR BETTER SURVEILLANCE



EXISTING SUNKEN PLAY AREA -  
LOG WALLS & OLD EQUIPMENT  
TO BE REMOVED, LEVELS RAISED  
& AREA TARMACED



GRASS



WET POUR RUBBER  
SAFETY SURFACING



1.2M HIGH BOW TOPPED STEEL  
FENCE AND SELF CLOSING GATES



SPEY MULTI UNIT



WICKSTEED 2.4M HIGH  
CRADLE SWINGS



SPRINGY



# Kingshill Park Play Area - Proposals



The existing site

## KEY



WET POUR RUBBER SAFETY SURFACING



SUTCLIFFE LOW ROTATOR



RECORD 4M HIGH ACTIVITY NET



WICKSTEED 2.4M HIGH & 1.8M HIGH DOUBLE SWINGS



TOWER UNIT & SLIDE



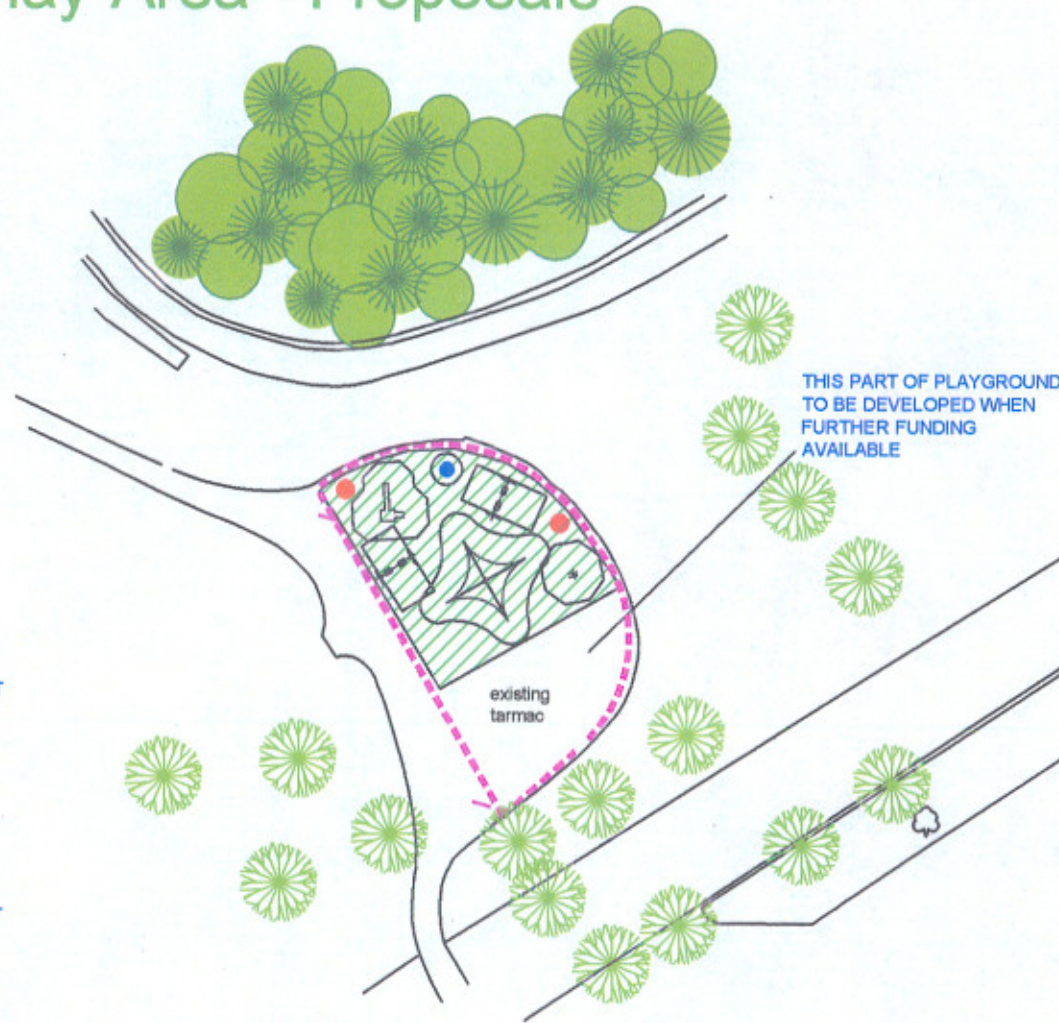
SUTCLIFFE DISH ROUNDABOUT



SPRINGY



1.2M HIGH BOW TOPPED FENCE AND SELF CLOSING GATES



THIS PART OF PLAYGROUND TO BE DEVELOPED WHEN FURTHER FUNDING AVAILABLE

Prepared for the Council by the Planning and Design Department, Kingshill Park, Glasgow, G12 8JG. The Council is not responsible for any errors or omissions. © 2010 Glasgow City Council. All Rights Reserved. 011 427 2222

