

Health and Social Care Delivery System in Walsall

A Brief Overview

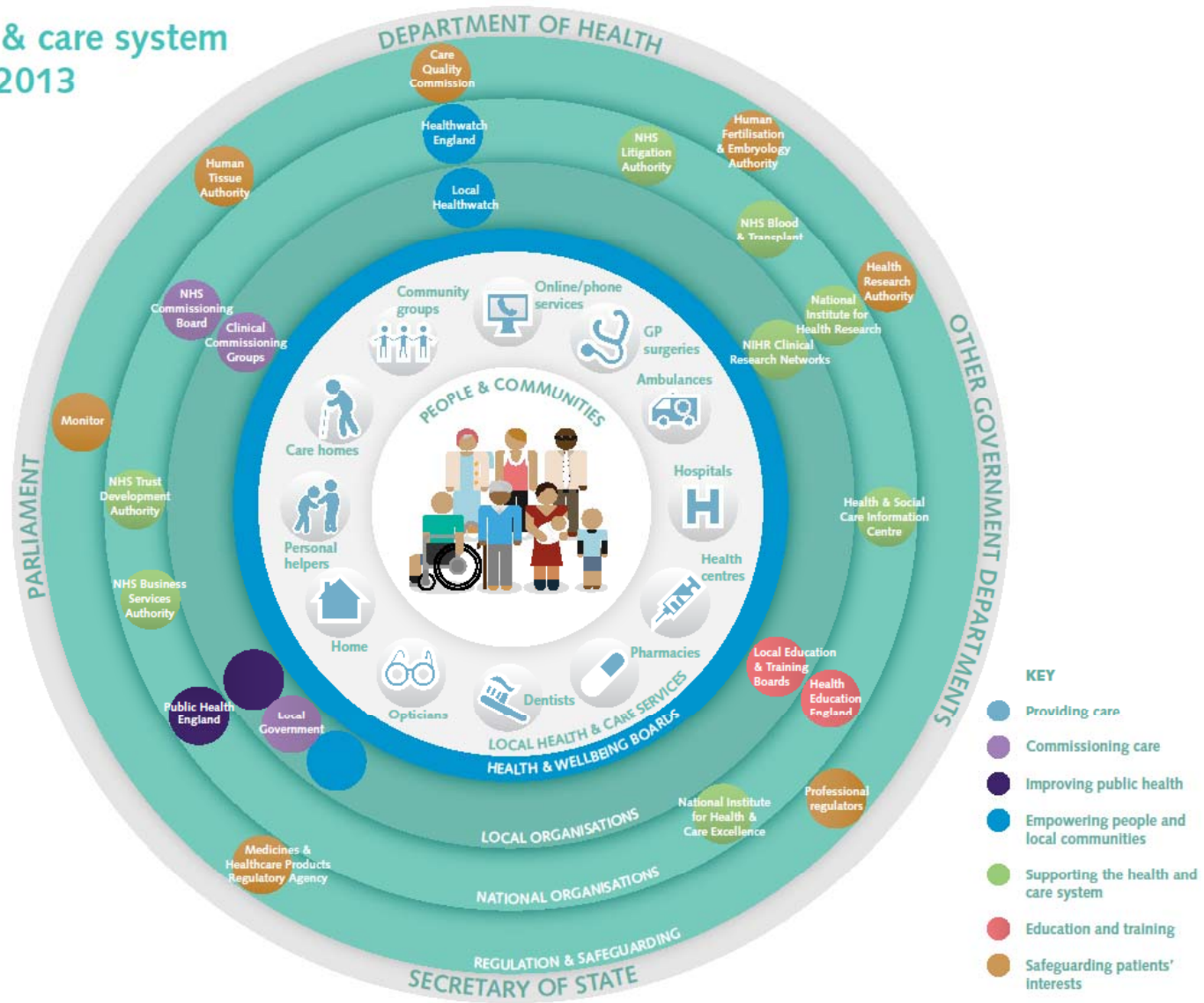


Walsall Council



Walsall Clinical Commissioning Group

The health & care system from April 2013



Walsall Council



Walsall Clinical Commissioning Group

Constituent Parts

- Walsall Healthcare NHS Trust – Manor Hospital
- Walsall HT– Community Health
- General Practice and Primary Care
- Walsall Council Social Care Services
- Dudley and Walsall Mental Health Trust
- West Midlands Ambulance Service
- Care Homes and Home Care Services
- Personal assistant and related services



Walsall Council



Walsall Healthcare NHS Trust

- Formed on 1st April 2011, following the integration of Walsall Hospitals NHS Trust and NHS Walsall Community Health
- £225m turnover; 4,000 staff
- The Manor – acute hospital with around 600 beds
- Adult and Children’s Community Health Services from health centres, GP surgeries and community locations



Walsall Council



Walsall Healthcare NHS Trust

- Full range of local acute services:
 - A&E, emergency medicine & surgery, critical care
 - Outpatients and planned surgery (inc bariatrics)
 - Maternity, inpatient paediatrics and neo-natal care
 - Diagnostics including CT and MRI scanners radiology and pathology
 - Regional networks for more specialist care e.g. complex cancer, vascular
- Adult community health services
 - Community nursing teams
 - Specialist end of life care teams at Palliative Care Centre
 - Intermediate care and services for frail older people
- Children's community health services
 - Health visiting and school nursing
 - Community children's teams and hospital at home for children
 - Specialist community children's services



Walsall Council



Walsall Clinical Commissioning Group

Walsall Primary Care Services

- 62 Practices
- 75 Pharmacies
- Walk in Centre
- Approx 162 GP's
- Ratio of 1 to 1,650 people
- Initial diagnosis and treatment
- Access to all NHS



Walsall Council



Walsall Clinical Commissioning Group

Walsall Council Adult Social Care Services

- Hollybank Intermediate Care Centre 21 beds – with WHT Intermediate Care Team
- Community Intermediate Care Service
- Average of between 150 to 175 cases
- Upto 6 weeks support/ reablement
- Around 1800 hours per week
- Assessment service by social workers, OTs
- Mental health, learning disabilities, older & disabled people, young people in transition



Walsall Council



Walsall Clinical Commissioning Group

Dudley and Walsall Mental Health Partnership NHS Trust

- Provides all inpatient and community mental health services for Dudley and Walsall Boroughs
- Include services for children and adolescents, adults of working age and older adults (over-65)
- Employs circa 1,100 staff
- Trust was set up in Oct 2008; prior to that, MH services managed respectively by Walsall and Dudley PCT's and Walsall Council



Walsall Council



Walsall Clinical Commissioning Group

Dudley and Walsall Mental Health Partnership NHS Trust

- Community mental health services for children, adults & older people
- Inpatient services for adults and older people
- Primary Care Mental Health services (including IAPT)
- Mental Health Social Care Services (via local authority partnerships)
- Psychological Therapies
- Substance Misuse Services
- Employment, education and training support for people with mental health problems
- Specialist Deaf CAMHS (national hub)



Walsall Council



Walsall Clinical Commissioning Group

West Midlands Ambulance Service

- Serves a population of 5.36 million people covering an area of more than 5,000 square miles made up of Shropshire, Herefordshire, Worcestershire, Warwickshire, Staffordshire and the Birmingham, Solihull and Black Country conurbation.
- Employs approximately 4,000 staff and operates from more than 100 community ambulance stations and 15 fleet preparation hubs across the region e.g. Willenhall
- Pre-hospital emergency and urgent ambulance service
- Patient transport service which annually completes in the region of 1,000,000 non-emergency Patient journeys.



Walsall Council



Walsall Clinical Commissioning Group

Care Homes and Home Care Services

- Around 73 Care Homes
- Approx 1500 beds
- 60 Care of the Elderly
- 11 Nursing Homes
- 20,000 hours of home care per week
- 2,100 to 2,200 cases at any time
- Nearly 60 different providers



Walsall Council



Walsall Clinical Commissioning Group

Personal assistants

Support services not regulated by CQC:

- Personal assistants through Direct Payments or self funders
- Respite services for carers
- Advice, information and advocacy
- Transport buddies



Walsall Council



Walsall Clinical Commissioning Group

Recent Scrutiny Items

- Mortality Rates in the Hospital
- Accident and Emergency Performance
- Ambulance Performance
- Improving Access to Primary Care
- Urgent Care (Walk in Centres etc)
- Redesign of Mental Health Services
- Redesign of Community Health Services
- The Social Care Operational Model for Reablement
- Quality Improvement in Care Homes



Walsall Council



Walsall Clinical Commissioning Group