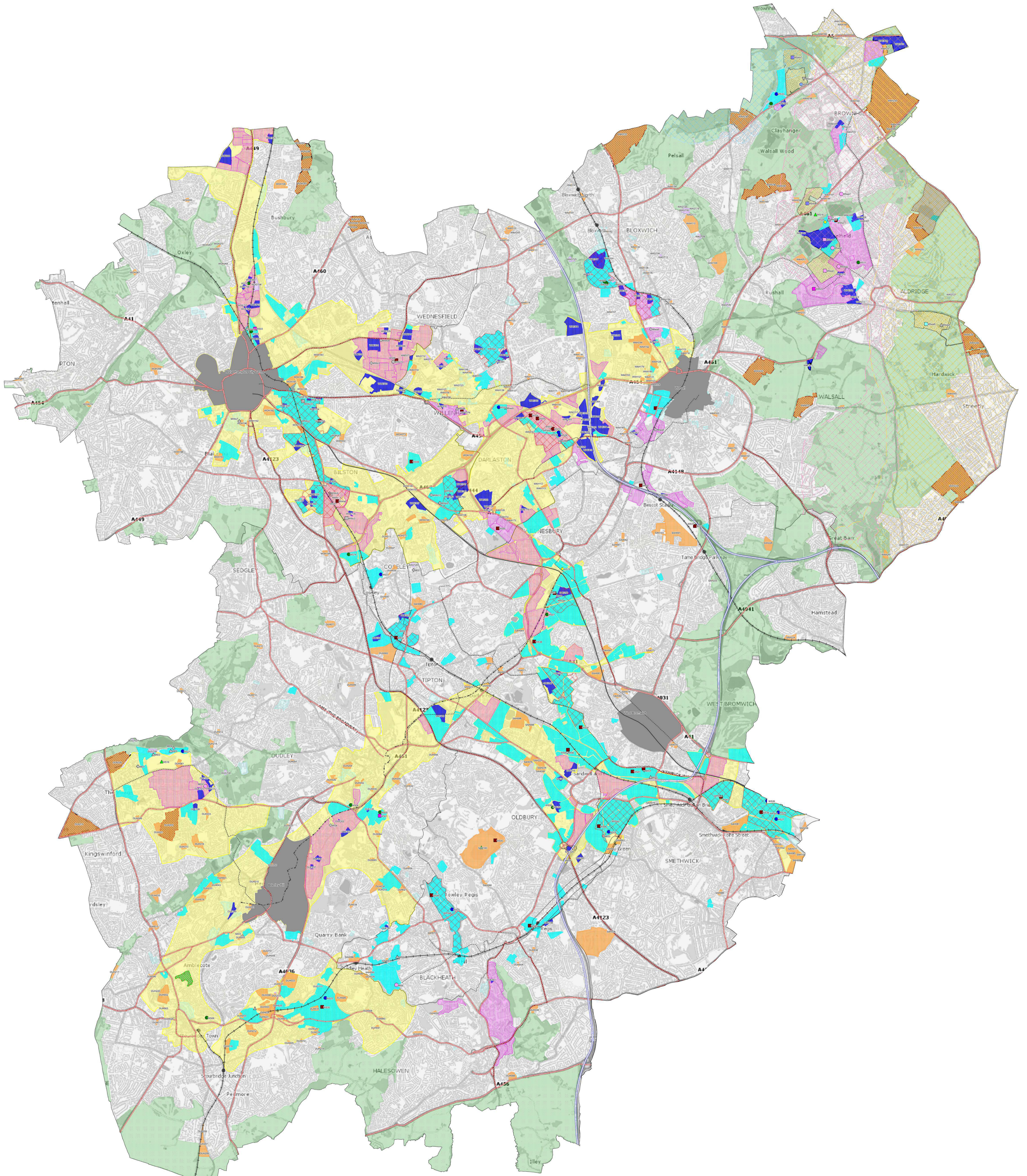


Key

- | | | | | | |
|--|---|--|---|--|--|
| <ul style="list-style-type: none"> Housing Allocation (HOU1) Gypsy and Traveller Pitch Allocations (HOU4) Employment Development Sites (EMP1) Strategic Employment Areas (EMP2) Local Employment Areas (EMP3) Other Employment Areas (EMP4) Local Greenspace (DSA.6) Strategic Allocations | <ul style="list-style-type: none"> Strategic Centres (CEN2) Core Regeneration Areas (CSP2) Neighbourhood Growth Areas (CSP3) Green Belt (GB1) | <p>Existing Mineral Sites and Mineral Infrastructure Sites (MIN 2)</p> <ul style="list-style-type: none"> Pre-operational Quarry Active Quarry Dormant Quarry Brickworks Pot Clay Factory Fireclay Stockpile <p>Mineral Infrastructure Sites</p> <ul style="list-style-type: none"> Rail Linked Aggregates Depot Aggregates Recycling Facilities Concrete Batching Plant Concrete Products Coating Plant Dry Silo Mortar Plant | <ul style="list-style-type: none"> Brick Clay Minerals Safeguarding Area (MIN2) Fireclay Minerals Safeguarding Area (MIN2) Sand and Gravel Minerals Safeguarding Area (MIN2) Preferred Area for Sand and Gravel (MIN3) Preferred Area for New Waste Facilities (W3) Mineral Extraction Sites (MIN2) | <ul style="list-style-type: none"> Hazardous Waste Treatment Infrastructure (W2) Metal Recycling Sites (W2) Waste Disposal Installations (W2) Municipal Waste Recovery Installations (W2) Municipal Waste Recovery-Supporting Infrastructure (W2) Other Significant Waste Management Infrastructure (W2) | <p>Transport</p> <ul style="list-style-type: none"> Motorways Key Route Network (TRAN1) Rail Network (TRAN4) Existing West Midlands Metro (TRAN4) Wednesbury- Brierley Hill Metro Extension (TRAN4) Metro Extension (TRAN4) Cycle Network (TRAN5) |
|--|---|--|---|--|--|

Reproduced from the Ordnance Survey mapping with the permission of the Controller of Her Majesty's Stationery Office. © Crown Copyright. Unauthorised reproduction infringes Crown copyright and may lead to prosecution or civil proceedings. © Crown Copyright and database rights 2021 Ordnance Survey 100019529. NO FURTHER COPIES ARE TO BE MADE



Key

Housing Allocation (HOU1)	Strategic Centres (CEN2)	Existing Mineral Sites and Mineral Infrastructure Sites (MIN 2)	Brick Clay Minerals Safeguarding Area (MIN2)	Hazardous Waste Treatment Infrastructure (W2)	Transport Motorways
Gypsy and Traveller Pitch Allocations (HOU4)	Core Regeneration Areas (CSP2)	Mineral Sites	Fireclay Minerals Safeguarding Area (MIN2)	Metal Recycling Sites (W2)	Key Route Network (TRAN1)
Employment Development Sites (EMP1)	Neighbourhood Growth Areas (CSP3)	Pre-operational Quarry	Sand and Gravel Minerals Safeguarding Area (MIN2)	Waste Disposal Installations (W2)	Rail Network (TRAN4)
Strategic Employment Areas (EMP2)	Green Belt (GB1)	Active Quarry	Preferred Area for Sand and Gravel (MIN3)	Municipal Waste Recovery Installations (W2)	Existing West Midlands Metro (TRAN4)
Local Employment Areas (EMP3)		Dormant Quarry	Preferred Area for New Waste Facilities (W3)	Municipal Waste Recovery-Supporting Infrastructure (W2)	Wednesbury- Brierley Hill Metro Extension (TRAN4)
Other Employment Areas (EMP4)		Brickworks	Mineral Extraction Sites (MIN2)	Other Significant Waste Management Infrastructure (W2)	Metro Extension (TRAN4)
Local Greenspace (DSA.6)		Pot Clay Factory			Cycle Network (TRAN5)
Strategic Allocations		Fireclay Stockpile			
		Mineral Infrastructure Sites			
		Rail Linked Aggregates Depot			
		Aggregates Recycling Facilities			
		Concrete Batching Plant			
		Concrete Products			
		Coating Plant			
		Dry Silo Mortar Plant			

Reproduced from the Ordnance Survey mapping with the permission of the Controller of Her Majesty's Stationery Office. © Crown Copyright. Unauthorised reproduction infringes Crown copyright and may lead to prosecution or civil proceedings. © Crown Copyright and database rights 2021 Ordnance Survey 100019525. NO FURTHER COPIES ARE TO BE MADE.