

CHILDREN'S SERVICES

SCRUTINY & PERFORMANCE PANEL



Progress and Attainment 2004

Report of: Elaine Simpson
Managing Director

Date: 19.10.04

Author: Trevor Edinborough
01922 686211

No of Pages:

	<p style="text-align: center;">Children's Services Scrutiny and Performance Panel</p> <p>DATE: 19th October, 2004</p>	<p>Agenda Item No.</p>
<p>PROGRESS AND ATTAINMENT 2004</p>		
<p>Ward(s)</p>	<p>All</p>	
<p>Portfolios: Councillor E. Hughes</p> <p>Summary of report:</p> <p>This report summarises attainment and progress in Walsall schools during 2003/04. It brings together examination results in the core subjects at Key Stages 1, 2 and 3 and at GCSE in Key Stage 4. The report also provides information on pupil attendance and on the level of fixed term exclusions in Walsall. Where comparative data is available, progress against national performance is shown and progress year-on-year. It should be noted, however, that at this early stage all results are provisional and it is likely to be some months before the DfES is in a position to issue final and validated results.</p>		
<p>Background papers:</p> <p>None</p>		
<p>Reason for scrutiny:</p> <p>Information on progress and attainment should be scrutinised fully annually to ensure that education service policy and strategy is based on a thorough evaluation of previous year's outcomes.</p>		
<p>Signed: </p> <p style="text-align: center;">Managing Director – Education Walsall</p> <p>Date: 13th October, 2004</p>		

Resource and legal considerations:

None.

Citizen impact:

Raising standards in schools will impact positively on the life chances of Walsall citizens.

Environment impact:

None.

Performance management:

As set out in the attached report.

Equality Implications:

Progress and attainment is analysed in depth so as to ensure that schools and the LEA are able to identify those areas where further development is needed.

Consultation:

None.

Contact Officer:

Trevor Edinborough
Tel. 01922 686211
trevor.edinborough@we.serco.com

PROGRESS AND ATTAINMENT IN 2004

1 CONTEXT

- 1.1 At this early stage all results should be regarded as provisional. Validated results will not be available nationally until later this term, and in some cases not until the early part of 2005.
- 1.2 In a number of schools and at various Key Stages some examination papers have been returned to national centres, for re-marking. This is particularly the case in English at Key Stage 3 where there has been a significant issue nationally. Such is the difficulty that the DfES has not yet issued any national figures for Key Stage 3 English.
- 1.3 To support schools in their analysis and planning Education Walsall provides an early and detailed summary of performance at each Key Stage. Results for all schools are made available for all schools in the Progress and Attainment Booklets. Whilst the booklets are based on provisional and unvalidated data, schools have welcomed the early and timely analysis as an aid to evaluation and further development. The booklets are also made available to Chairs of Governors to assist Governing Bodies in their work.
- 1.4 Attached are slides updating key outcomes and progress.

2 PERFORMANCE AT KEY STAGE 1

- 2.1 The summary of results at Key Stage 1 is shown in Table 1.

Table 1 Key Stage 1 Level 2+	2003	2004	Change 03 - 04	Change 01-04
Reading (Walsall)	81	83	+2	+1
Reading (National)	84	85	+1	+1
Writing (Walsall)	78	79	+1	-3
Writing (National)	81	82	+1	-4
Maths (Walsall)	87	89	+2	0
Maths (National)	90	90	0	-1

- 2.2 At Key Stage 1 (Age 7) in Reading, some 83% of children reached the expected grade for their age group. This is considerably improved when compared with the results in 2003 and represents a closing of the gap when compared with national performance levels.
- 2.3 In Writing, performance has kept pace with the national improvement and shows a slight narrowing of the gap, over time.
- 2.4 In Maths almost 90% of children have reached the expected grade for their age group. The performance in Maths in 2004 is now only 1% below the national figure.
- 2.5 The improved performance at Key Stage 1 reverses the 2003 trend and reflects a clear focus of strategy and resource on improvement in this Key Stage.

3 PERFORMANCE AT KEY STAGE 2

- 3.1 The summary of results at Level 4+ is shown in Table 2.

Table 2 Key Stage 2 Level 4+	2003	2004	Change 03-04	Change 01-04
English (Walsall)	71	73	+2	+5
English (National)	75	77	+2	+2
Maths (Walsall)	65	68	+3	+6
Maths (National)	72	73	+1	+2
Science (Walsall)	82	81	-1	0
Science (National)	86	85	-1	-2

- 3.2 At Key Stage 2 (Age 11), in both English and Maths, the results show further evidence of sustained improvement in the percentage of children achieving expected levels. In Maths there has been a considerable further gain in closing the gap between the performance in Walsall and the national performance. In Science the national position has been mirrored in Walsall. In addition and taking the period 2001-2004 there has been a sustained position of closing the gaps with the national performance levels in all 3 core subjects. In each case the gaps are now reduced significantly.
- 3.3 In respect of gender there remains a gap of significance between boys and girls and at all three subjects.

- 3.4 The performance summary for children achieving Level 5+ is shown in Table 3. Level 5+ represents achievement in excess of the nationally expected levels.

Table 3 Key Stage 2 Level 5+	2003	2004	Change 03-04	Change 01-04
English (Walsall)	21	24	+3	+1
English (National)	27	27	0	-1
Maths (Walsall)	23	26	+3	+7
Maths (National)	29	31	+2	+6
Science (Walsall)	32	34	+2	+10
Science (National)	41	43	+2	+9

- 3.5 At Level 5+ children in Walsall schools have performed very well and have made significant inroads into the gap between the local and national performance levels. In English and Maths the gaps have narrowed between 2003 and 2004 and in all three subjects across the period 2001-2004.

4 PERFORMANCE AT KEY STAGE 3

- 4.1 The summary of performance at Key Stage 3 is shown in Table 4.

Table 4 Key Stage 3 Level 5+	2003	2004	Change 03-04	Change 01-04
English (Walsall)	62	?	?	?
English (National)	68	?	?	?
Maths (Walsall)	65	65	0	+6
Maths (National)	72	73	+1	+6
Science (Walsall)	60	58	-2	0
Science (National)	68	66	-2	0

- 4.2 At Key Stage 3 (Age 14) it is not yet possible to provide either local or national results for KS3 English, at any level. Whilst results in all other

subjects at KS 1, 2 and 3 have been published, the results in English at Key Stage 3 have been withheld. This reflects the concern in schools about the quality and validity of marking provided nationally.

- 4.3 Whilst the results in Maths in 2004 are disappointing and show a widening of the gap with the national figure, the results over time continue to demonstrate an upward trend. The results in Science have maintained a parallel path with the national figure, both in 2003 and over time.

5 PERFORMANCE AT KEY STAGE 4

- 5.1 The summary of performance at Key Stage 4 is shown in Table 5.

Table 5 Key Stage 4	2003	2004	Change 03-04	Change 01-04
5+ GCSE A*-C (Walsall)	43	45	+2	+4
5+ GCSE A*-C (National)	53	?	?	?

- 5.2 At Key Stage 4 (Age 16) results are the last of the Key Stage results to be published and no national nor local figures have yet been published by the DfES. However, the provisional analysis of schools results on the percentage of students achieving 5+ A*-C GCSE grades indicates an improvement of some 2% overall. These figures are however, highly provisional, though they appear to reflect some further improvement both on 2003 and over time.

6 ATTENDANCE

- 6.1 Overall attendance levels by school phase are shown in Table 6.

Table 6 Attendance	2003	2004	Change 03-04	Change 01-04
Primary (Walsall)	93.3	93.8	+0.5	+1.0
Primary (National)	94.2	94.5	+0.3	+0.6
Secondary (Walsall)	91.0	91.6	+0.6	+1.4
Secondary (National)	91.7	91.9	+0.2	+1.0
Special (Walsall)	85.3	88.8	+3.5	+4.3

Special (National)	89.3	89.7	+0.4	+1.0
---------------------------	------	------	------	------

- 6.2 Pupil attendance in Walsall primary and secondary schools has improved for the third year running.
- 6.3 Secondary attendance has improved from 2003 by 0.6% - some three times the national rate of improvement. There has been a closing of the gap between Walsall and the national figures both from 2003-2004 and over time.
- 6.4 Attendance in primary schools has improved by 0.5% when compared with the figure for 2003. This rate of improvement is almost double the national rate of improvement and reflects a narrowing of gaps from 2003-2004 and over time.
- 6.5 There were no Walsall primary schools with an attendance rate under 90% compared with 5 schools under 90% in 2002-2003.
- 6.6 Pupil attendance in Special Schools has exceeded the target set and one year ahead of schedule. In Special Schools, attendance has improved from 2003, by 3.5% compared with 0.4% improvement national. This represents a further and considerable closing of gaps.

7 EXCLUSIONS

- 7.1 Overall exclusion levels by school phase are shown in Table 7.

Table 7 Exclusions	2003	2004	Change 03-04	Change 01-04
Primary	7	8	+1	-2
Secondary	33	32	-1	-14
Special	2	0	-2	0
Total	42	40	-2	-16

- 7.2 There were 40 permanent exclusions in 2004 representing an overall decrease of 2 on the previous year. In addition and over time permanent exclusions has significantly reduced by 16.
- 7.3 Secondary exclusions fell for the second year running and show a very considerable reduction over time.

- 7.4 Overall the rate of exclusion in Walsall expressed as a percentage of the school population is below the national average and below the average for West Midlands Authorities.

8 RISK MANAGEMENT ISSUES

- 8.1 These results maintain a sustained level of improvement in the vast majority of cases.

9 SUMMARY

- 9.1 Cabinet will be pleased to recognise the further improvement in progress and attainment evident across the borough. The sustained progress at KS2 has been recognised, in writing, by David Miliband the Minister for School Standards. Achievement at all Key Stages, and the levels of attendance and exclusion reflect the very focused efforts of staff across the borough.

Achievement, Attendance & Exclusions

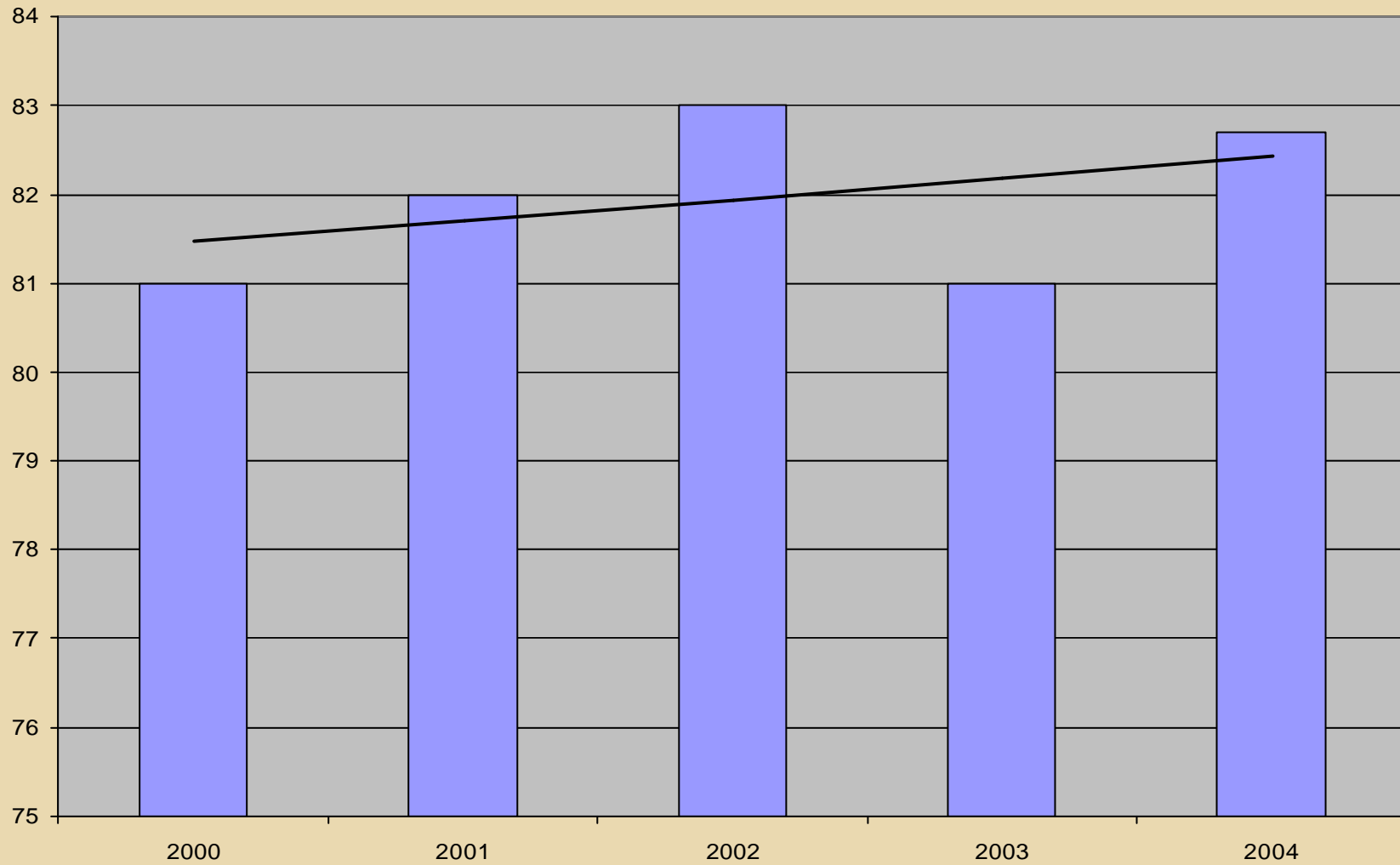
Progress 2001-04



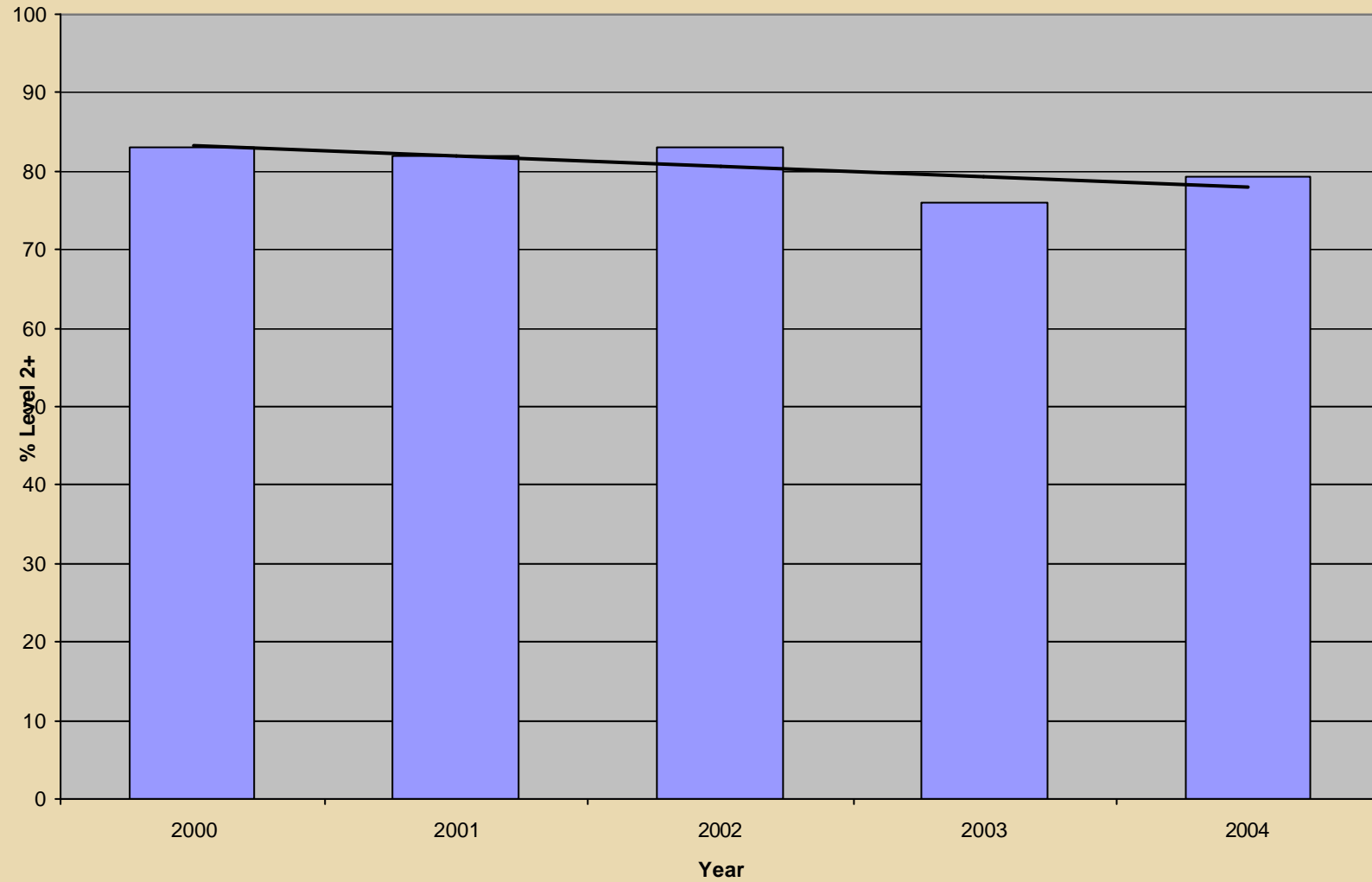
Key Stage 1 Reading - LEA

Education Walsall

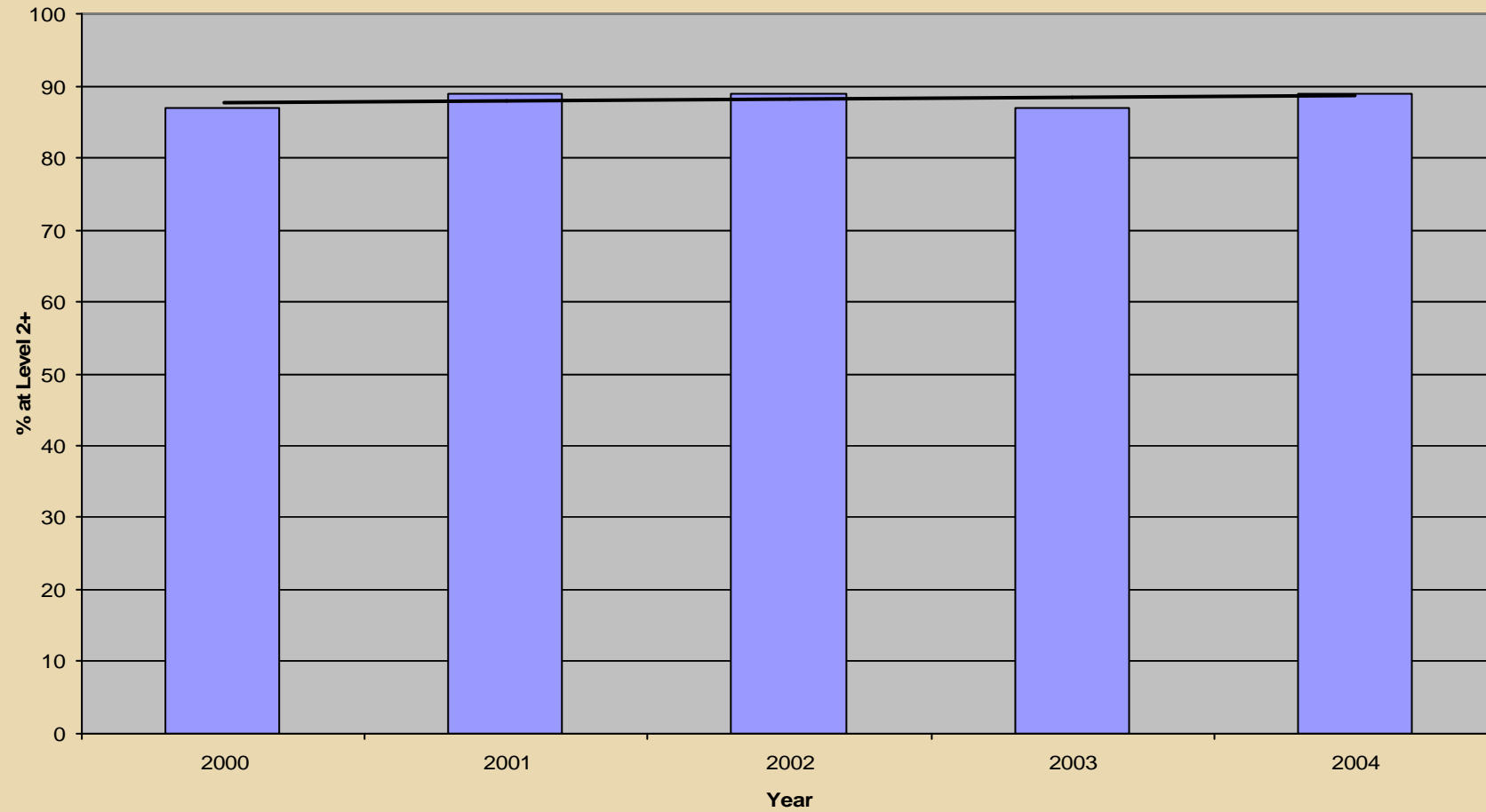
Key stage one: Reading



Key stage one: Writing



Key stage one: Maths



Key Stage 1 Reading – LEA/National

Education Walsall

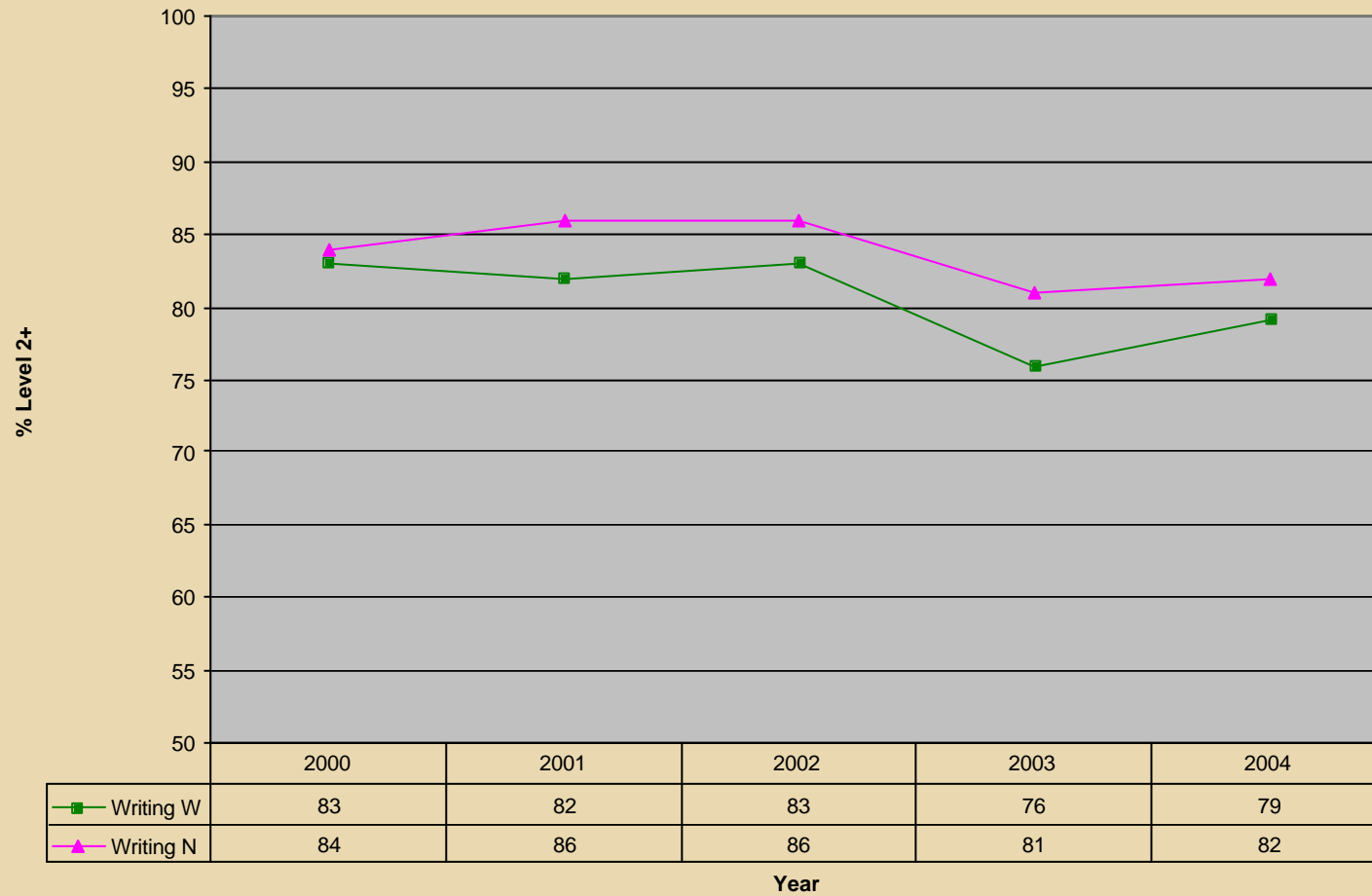
Key stage one: Reading level 2+



Key Stage 1 Writing – LEA/National

Education Walsall

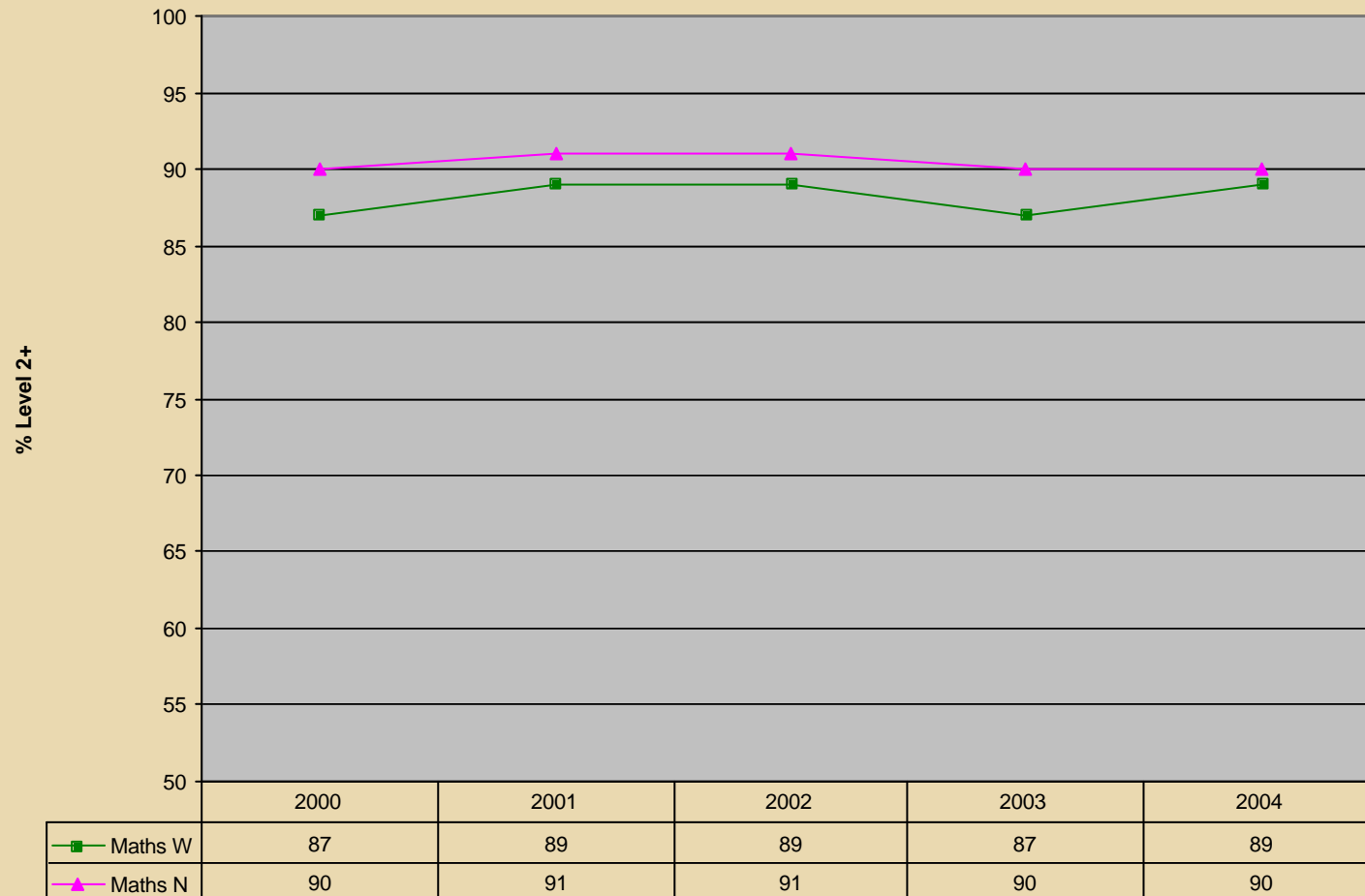
Key stage one : Writing Level 2+



Key Stage 1 Maths – LEA/National

Education Walsall

Key Stage one: Maths Level 2+

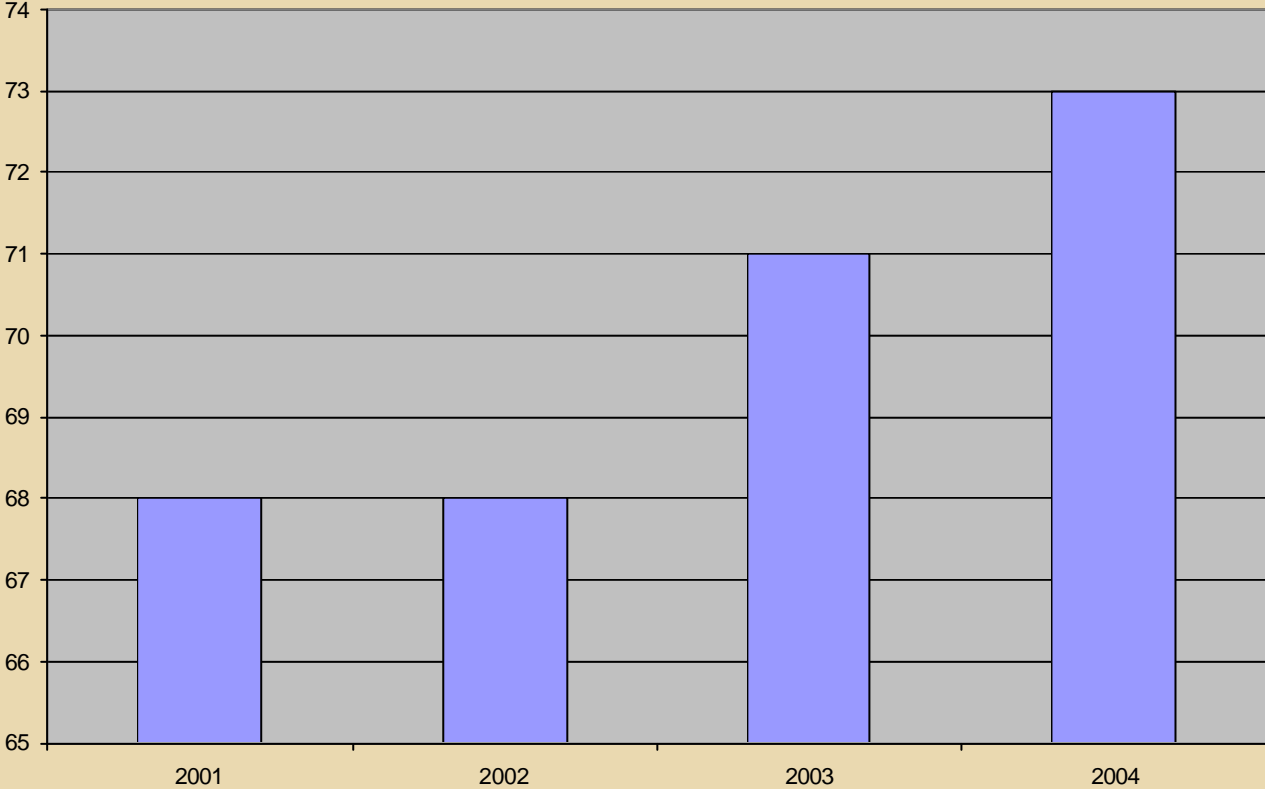


Key Stage 2 – Level 4+

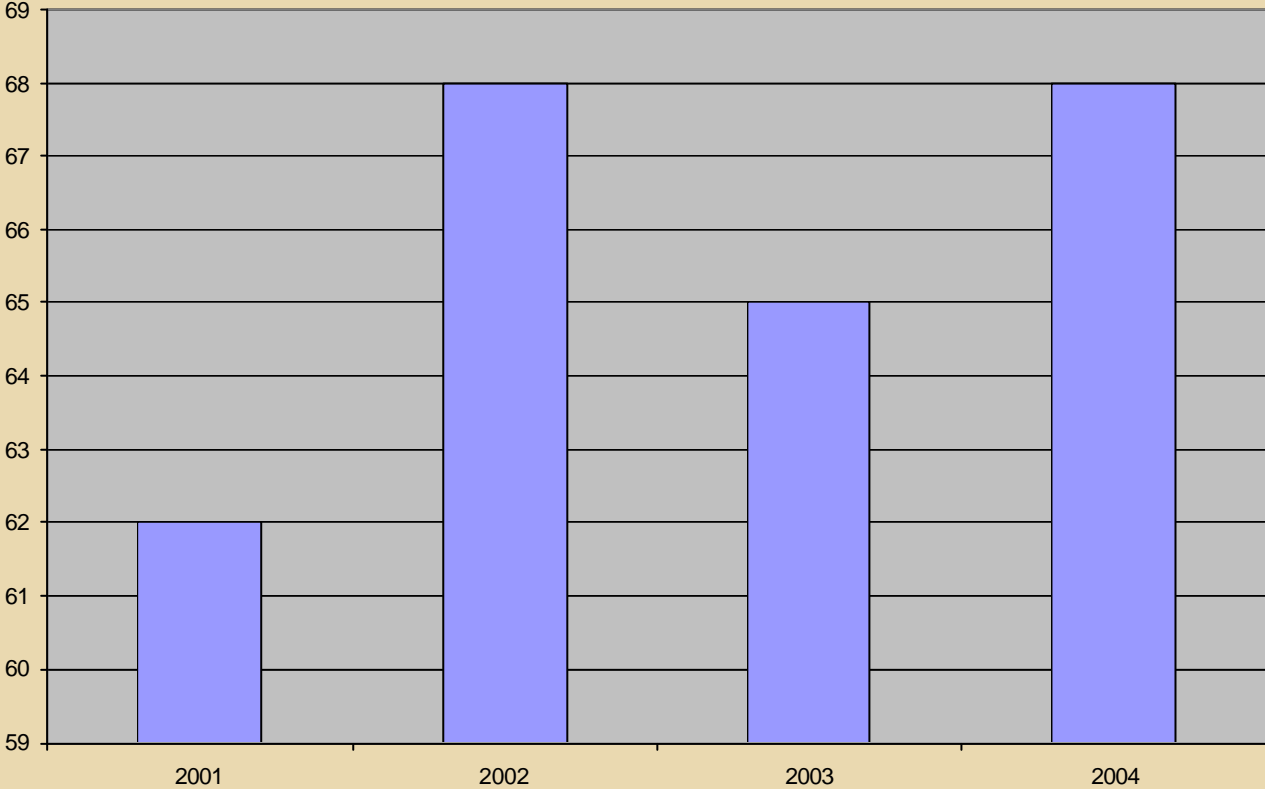
Education Walsall

Test	2001	2002	2003	2004	03-04	01-04
English (W)	68	68	71	73	+2	+5
English (N)	75	75	75	77	+2	+2
Maths (W)	62	68	65	68	+3	+6
Maths (N)	71	73	73	74	+1	+3
Science (W)	82	81	82	81	-1	-1
Science N)	87	86	87	86	-1	-1

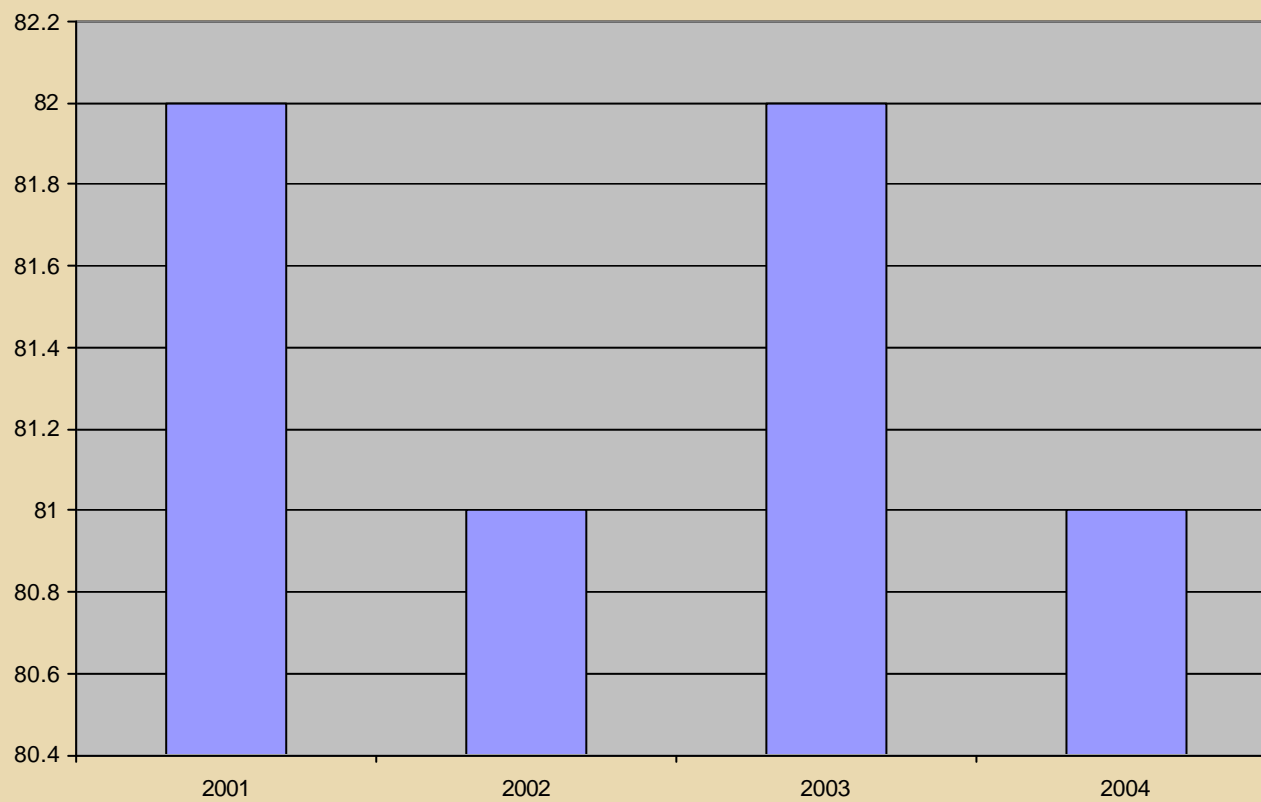
KS2 English L4+ (LEA)



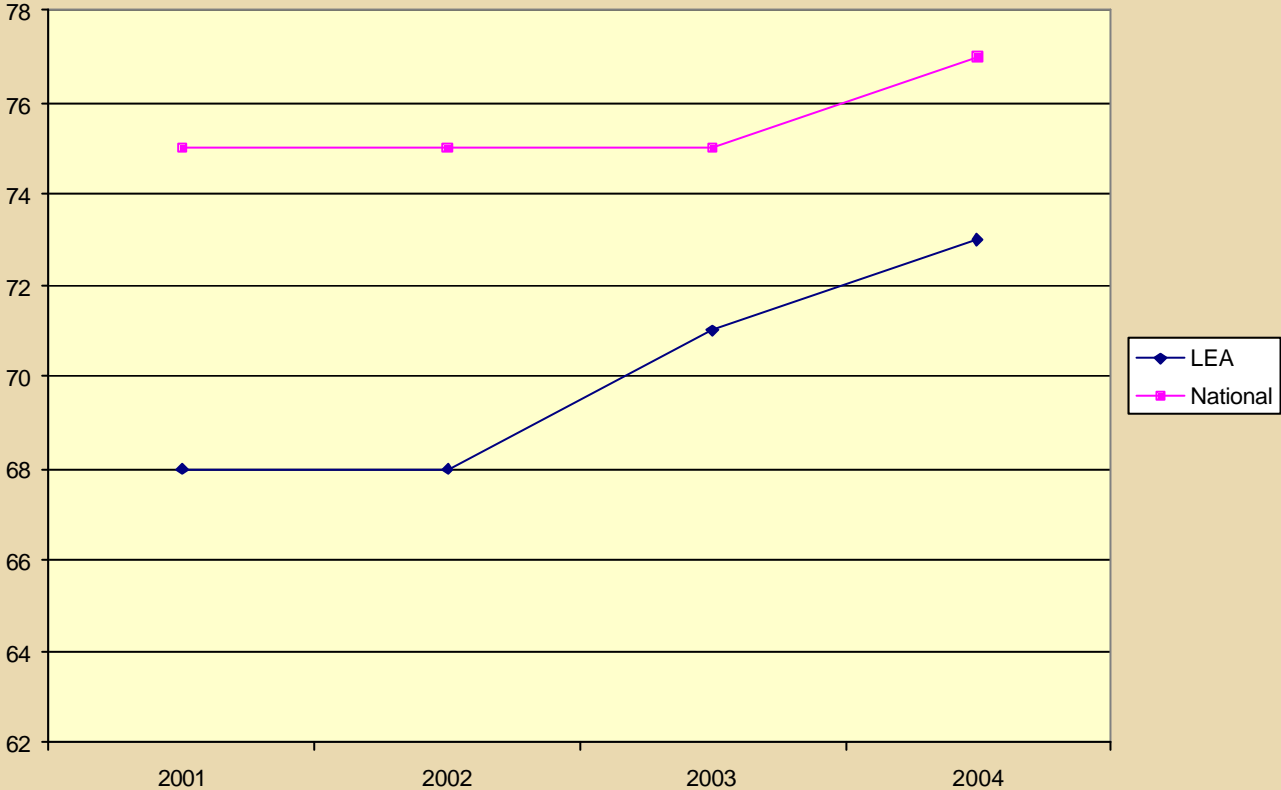
KS2 Maths L4+ (LEA)



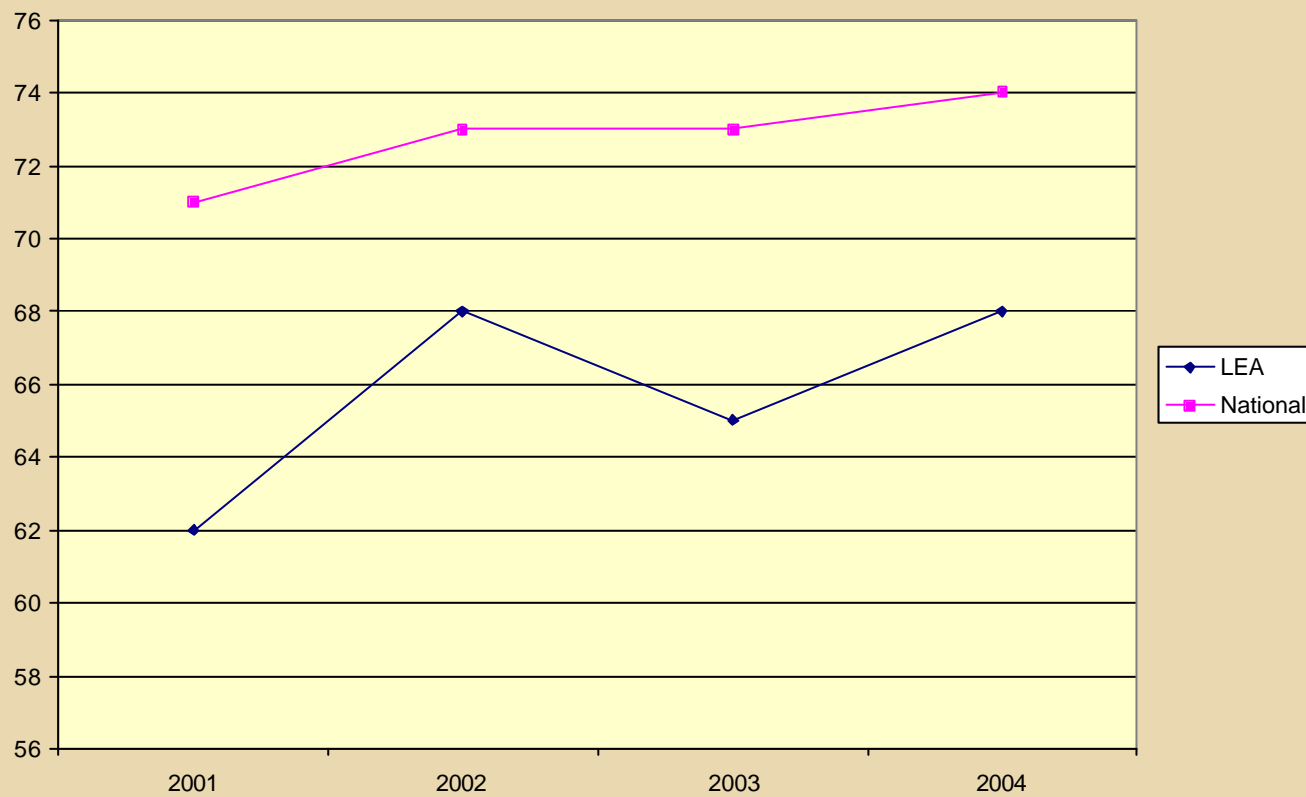
KS2 Science - L4+ (LEA)



Key Stage 2 English - L4+



Key Stage 2 Maths - L4+



Key Stage 2 Science - L4+

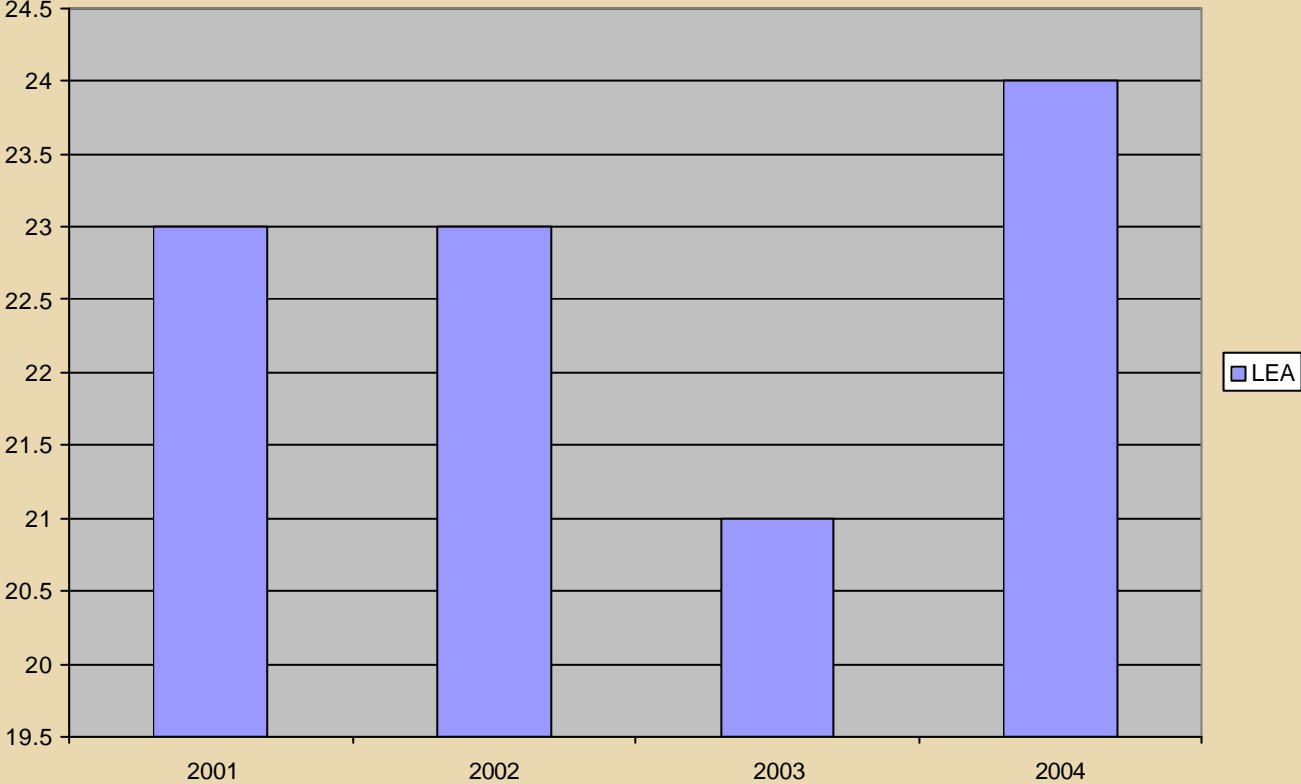


Key Stage 2 – Level 5+

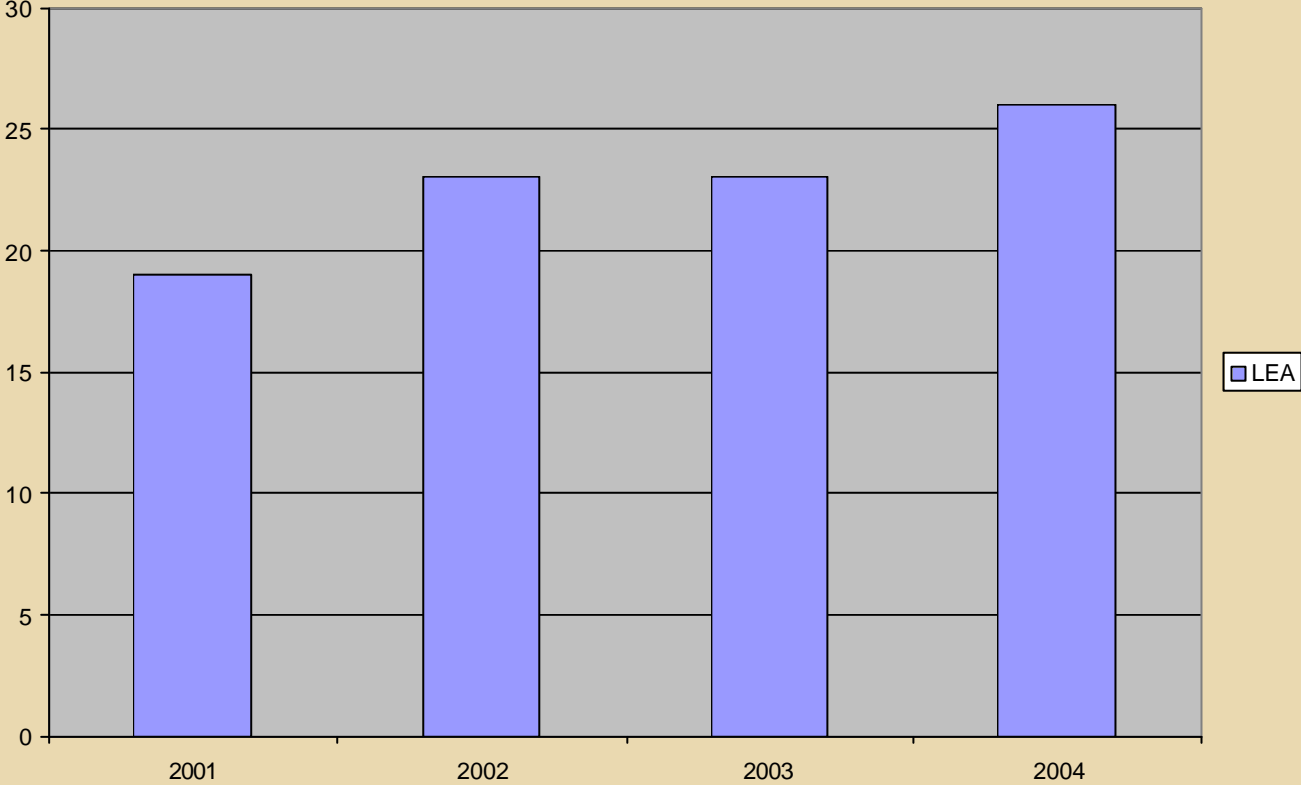
Education Walsall

Test	2001	2002	2003	2004	03-04	01-04
English (W)	23	23	21	24	+3	+1
English (N)	28	29	27	27	0	-1
Maths (W)	19	23	23	26	+3	+7
Maths (N)	25	28	29	31	+2	+6
Science (W)	24	29	32	34	+2	+10
Science N)	34	38	41	43	+2	+9

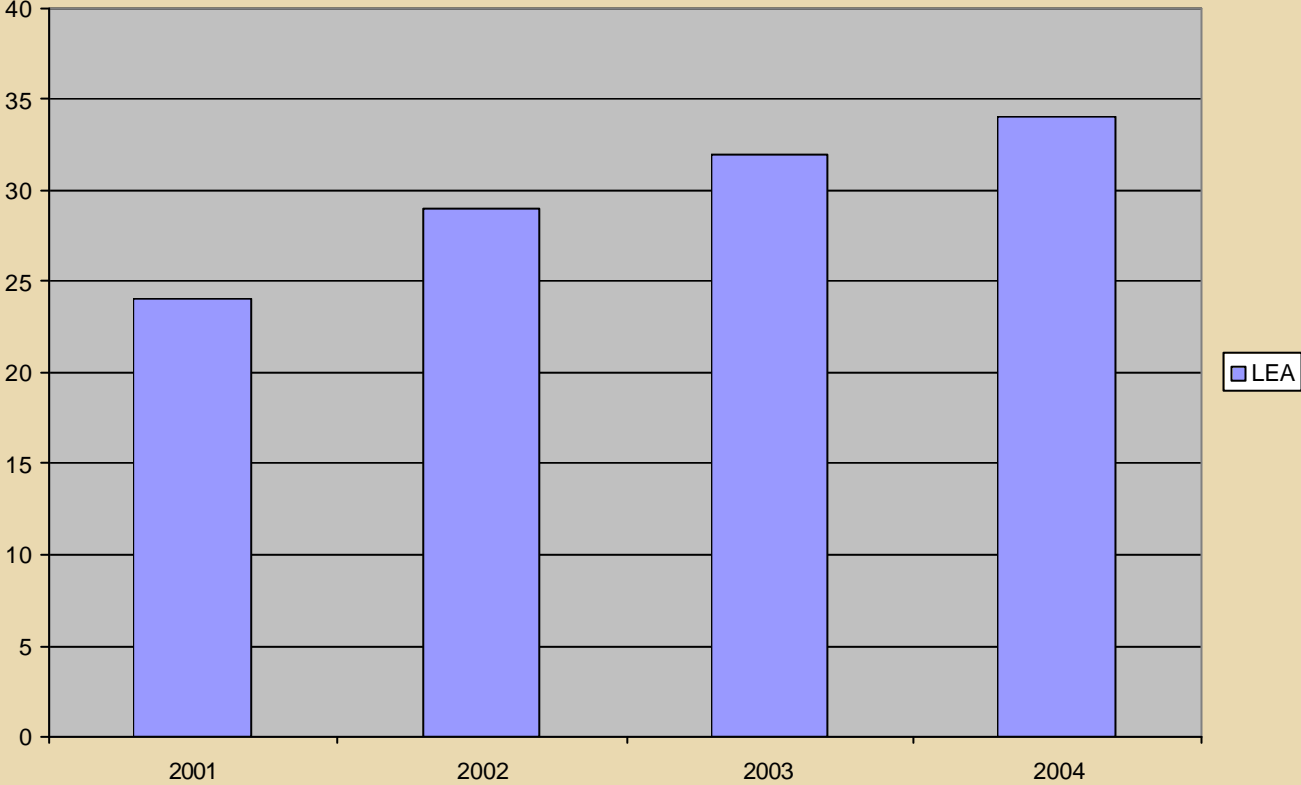
KS2 English L5+ (LEA)



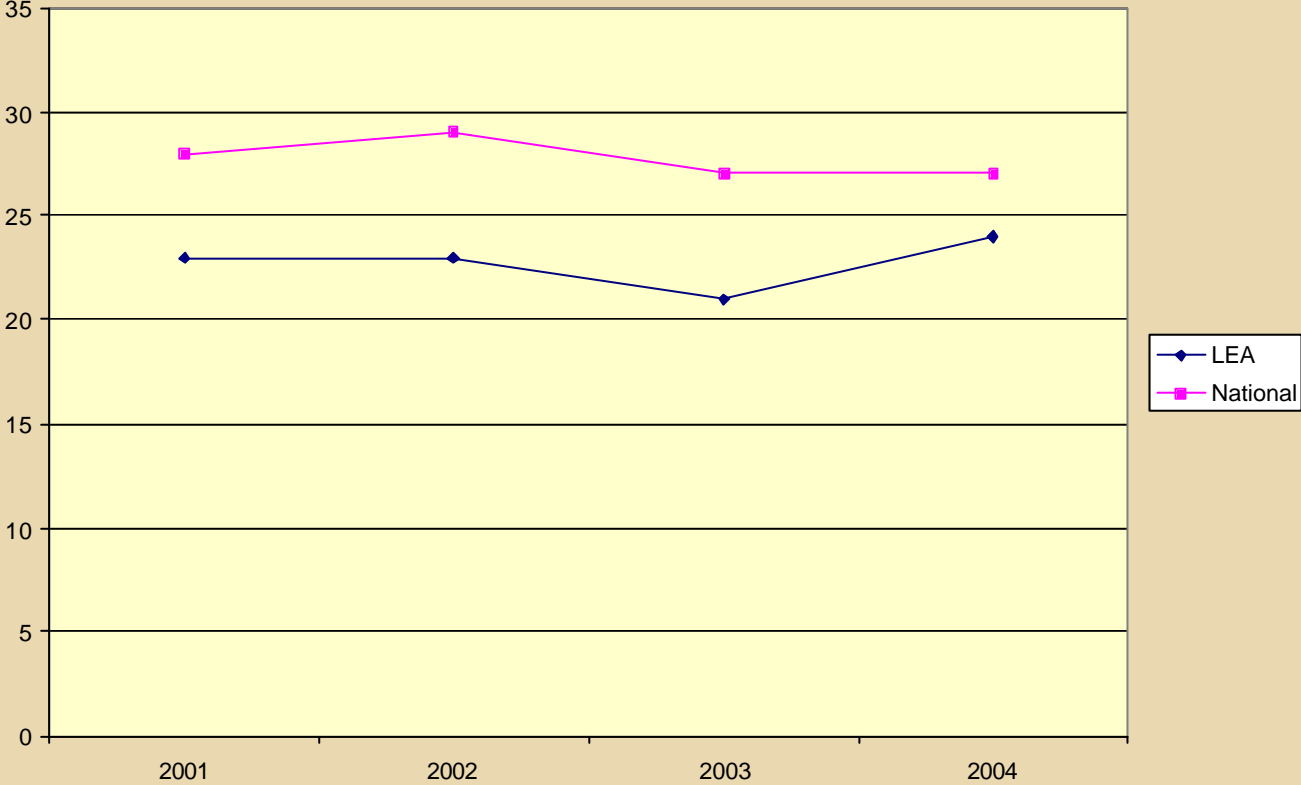
KS2 Maths L5+ (LEA)



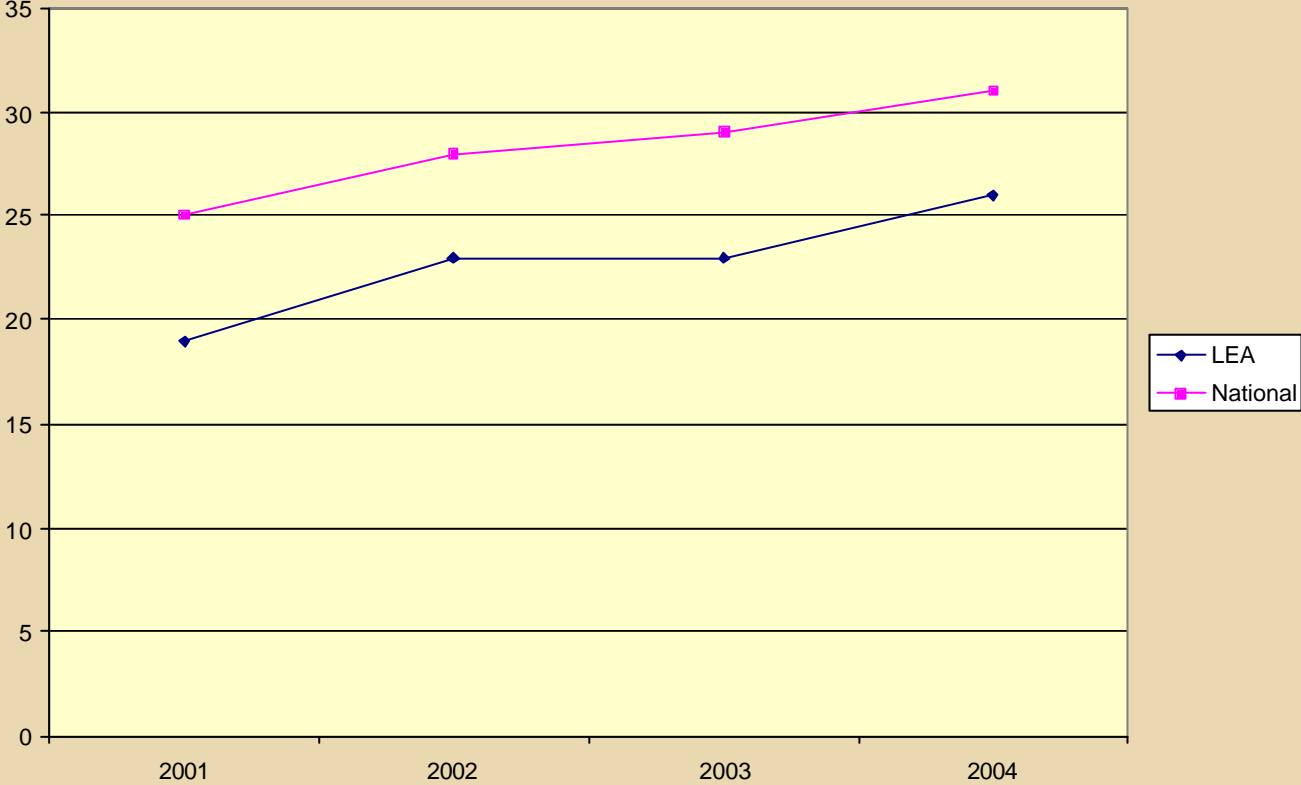
KS2 Science L5+ (LEA)



KS2 English - L5+



KS2 Maths - L5+

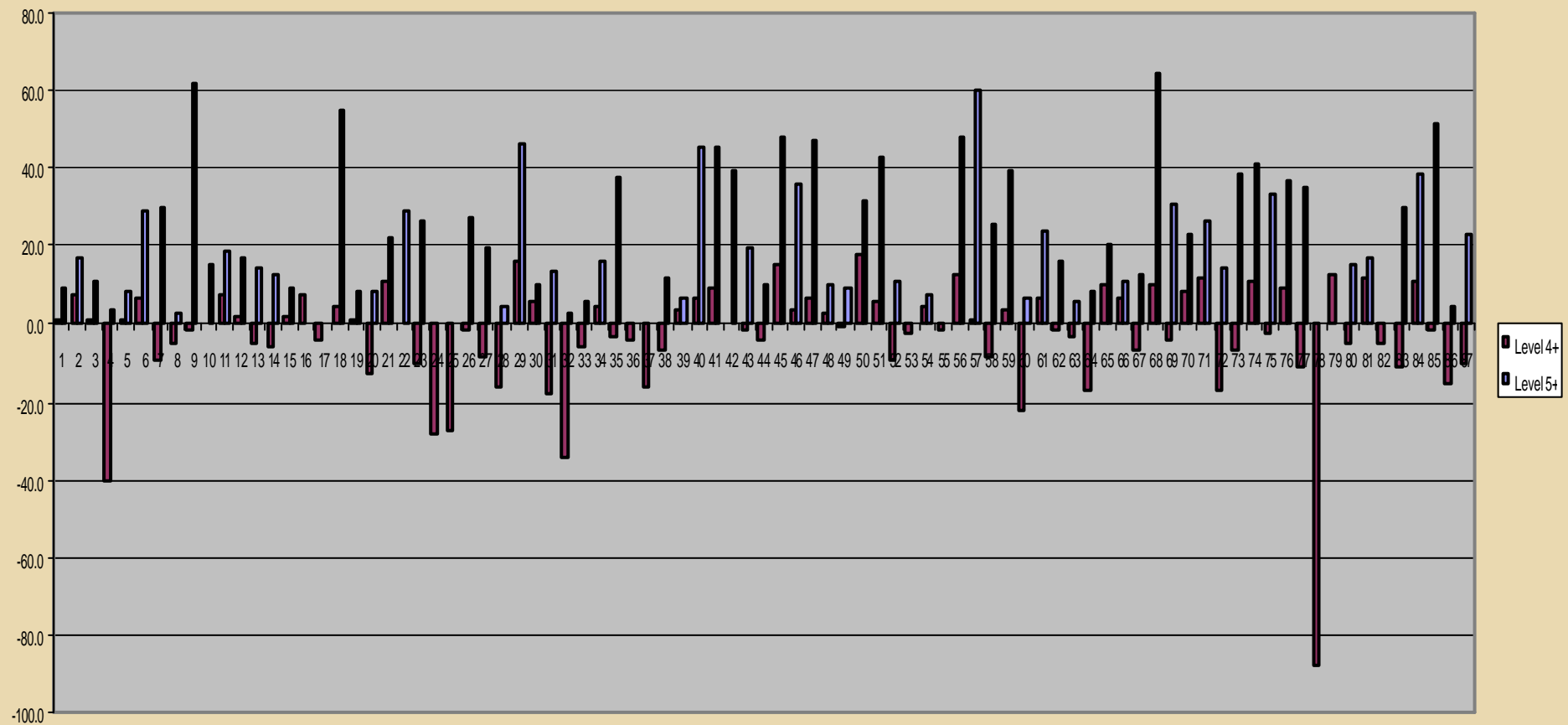


	2004	Similar		
English L4+	73	75	-2	
English L5+	24	28	-4	
Maths L4+	68	72	-4	
Maths L5+	26	29	-3	
Science L4+	81	87	-6	
Science L5+	34	38	-4	

Key Stage 2 English – Value Added

Education Walsall

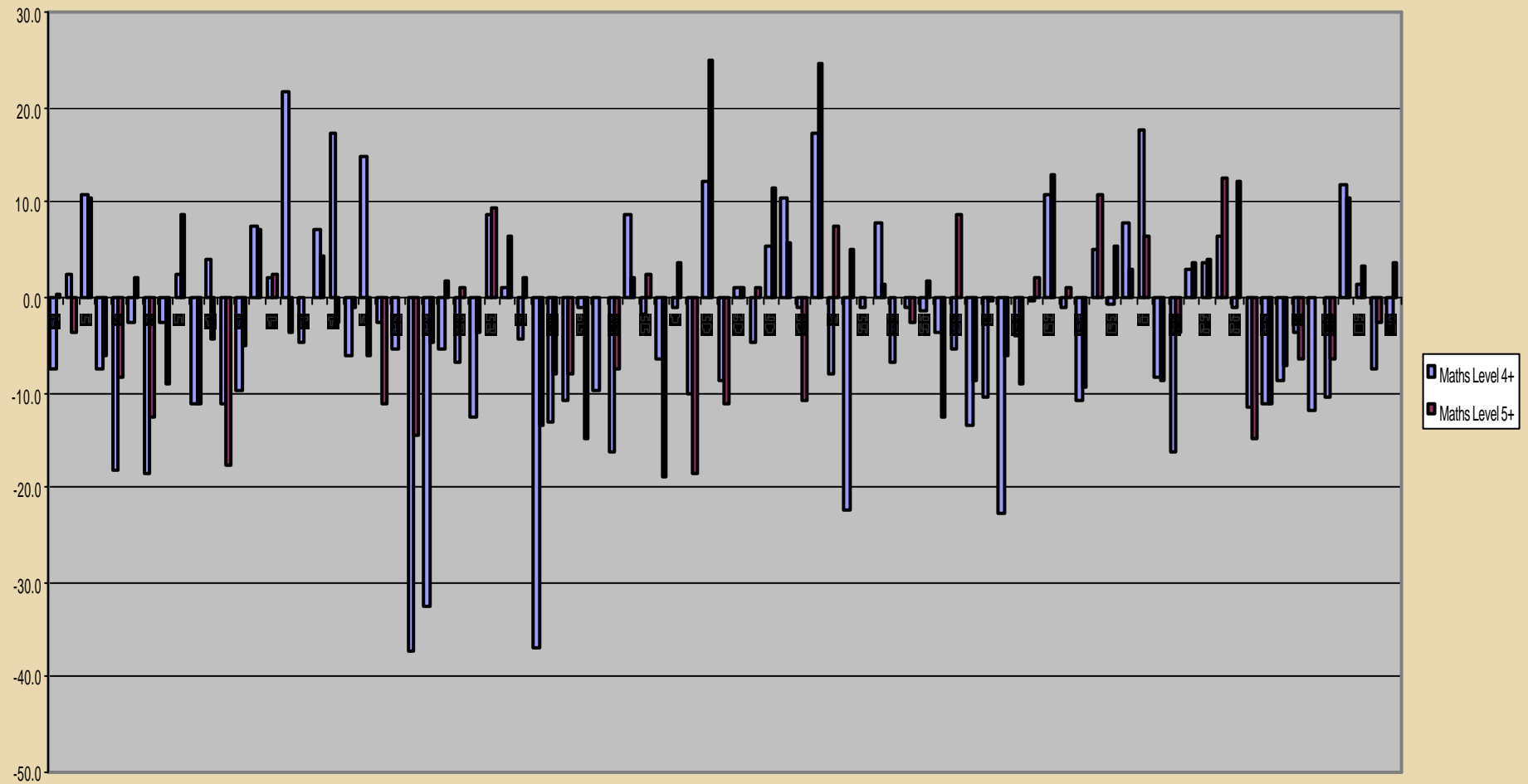
English KS2 difference between similar school estimates and actual results



Key Stage 2 Maths – Value Added

Education Walsall

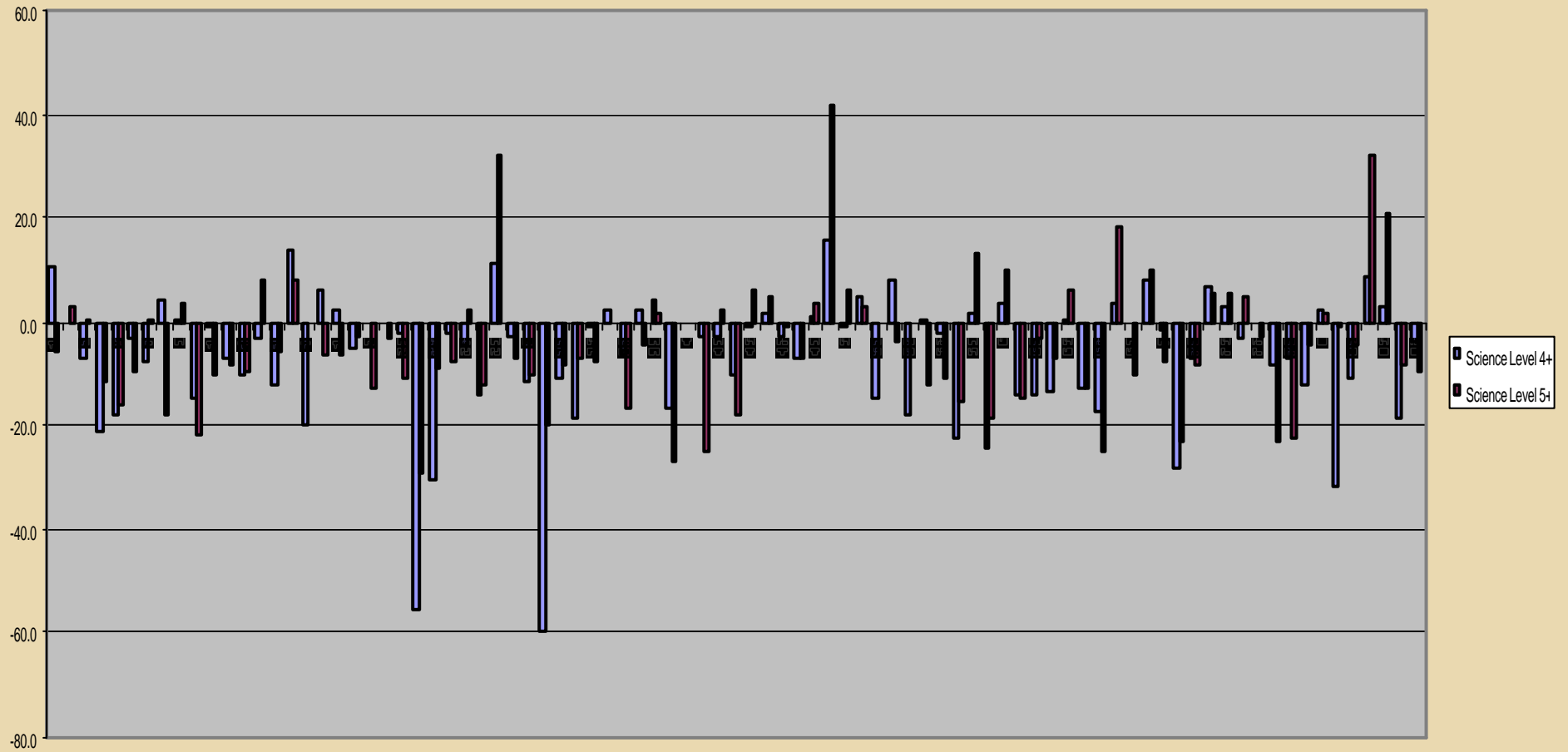
Maths KS2 difference between similar school estimates and actual results



Key Stage 2 Science – Value Added

Education Walsall

Science KS2 difference between similar school estimates and actual results

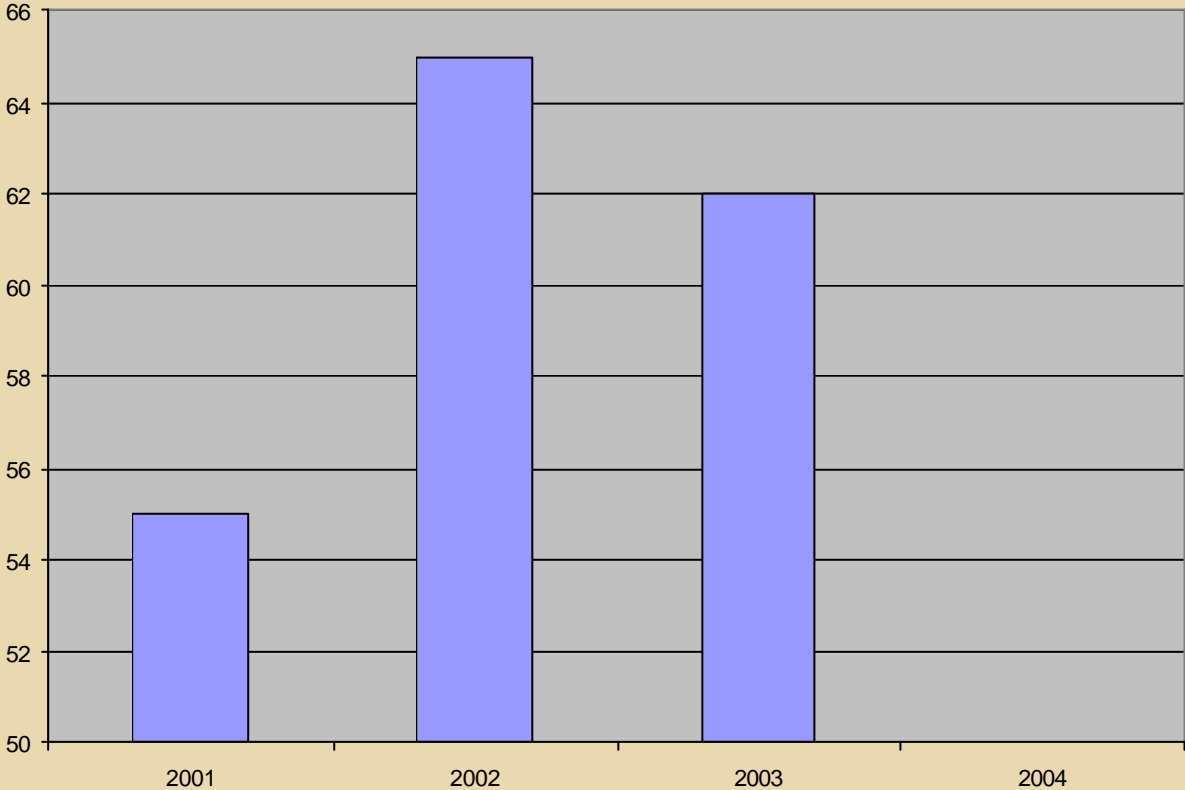


Key Stage 3 – Level 5+

Education Walsall

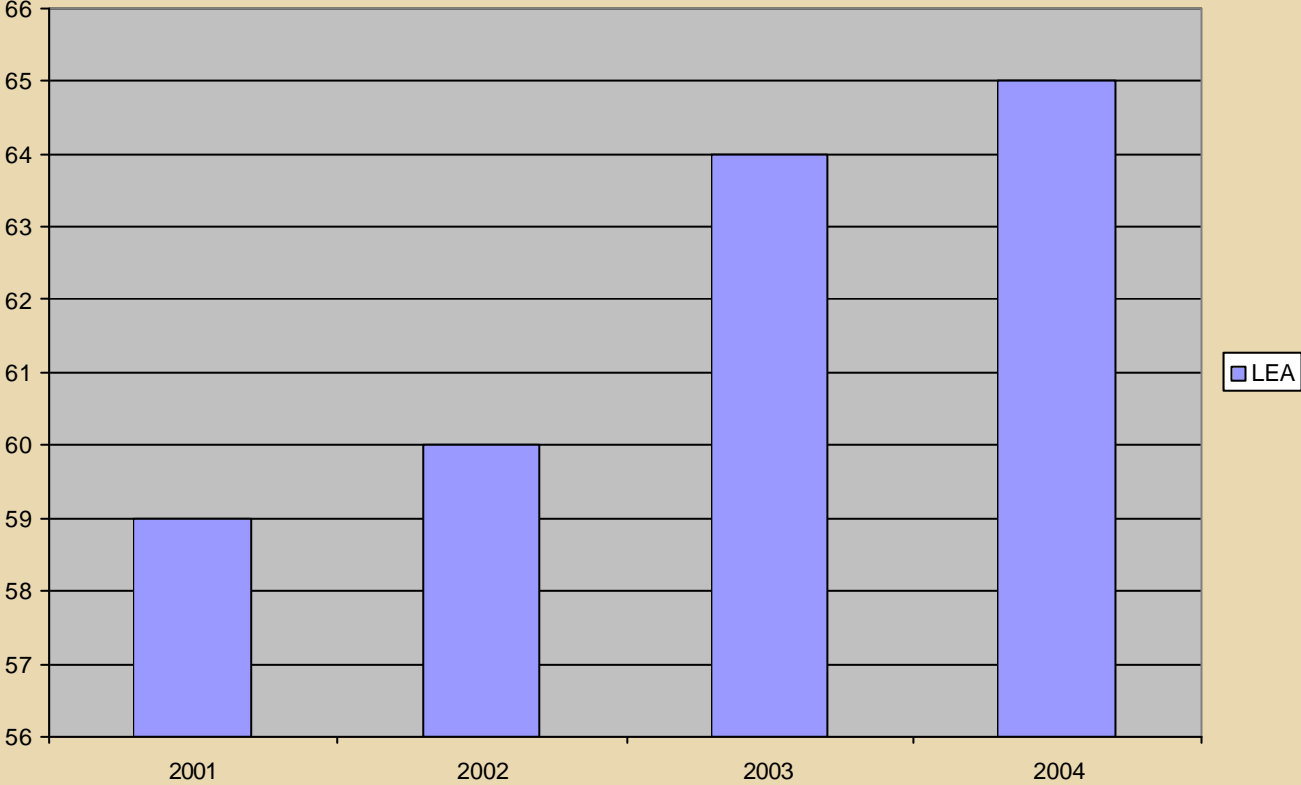
Test	2001	2002	2003	2004	03-04	01-04
English (W)	55	65	62			
English (N)	65	67	68			
Maths (W)	59	60	65	65	+1	+6
Maths (N)	67	67	72	73	+1	+6
Science (W)	58	59	60	58	-2	0
Science (N)	66	66	68	66	-2	0

KS3 English L5+ (LEA)

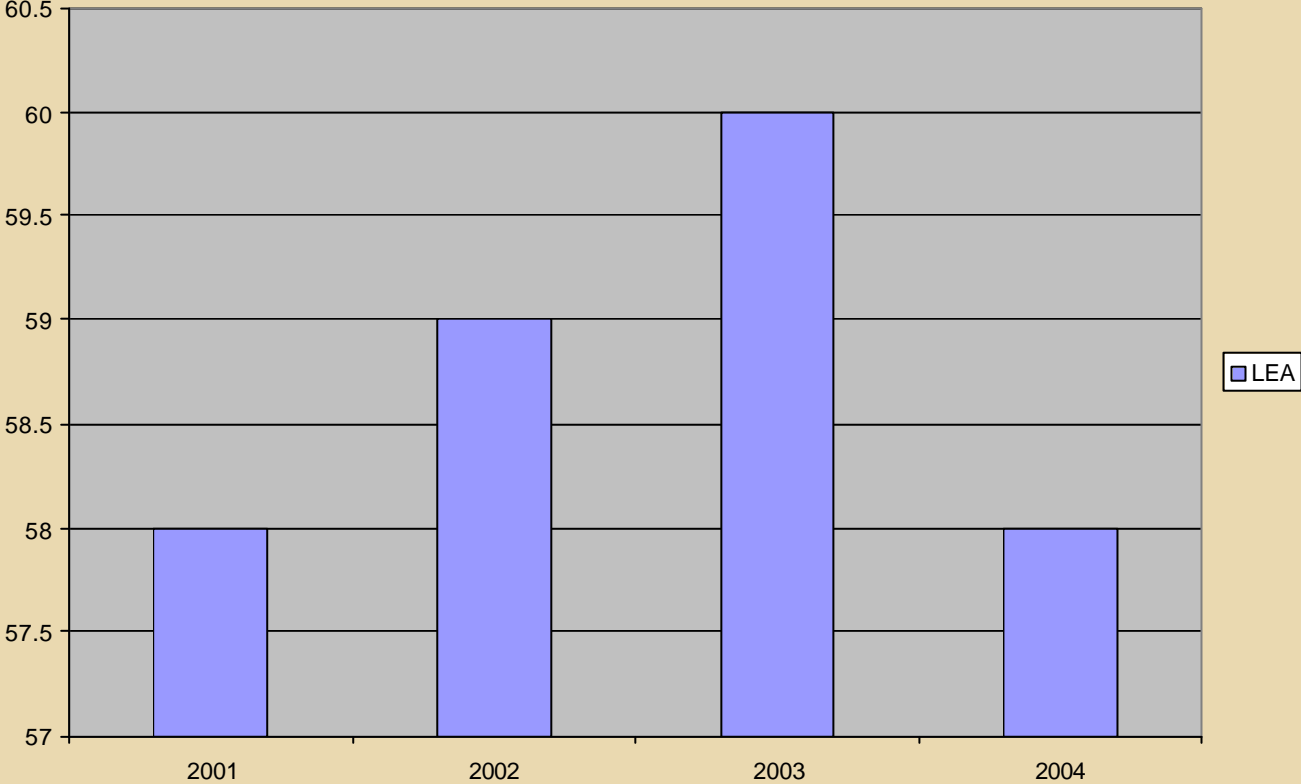


LEA

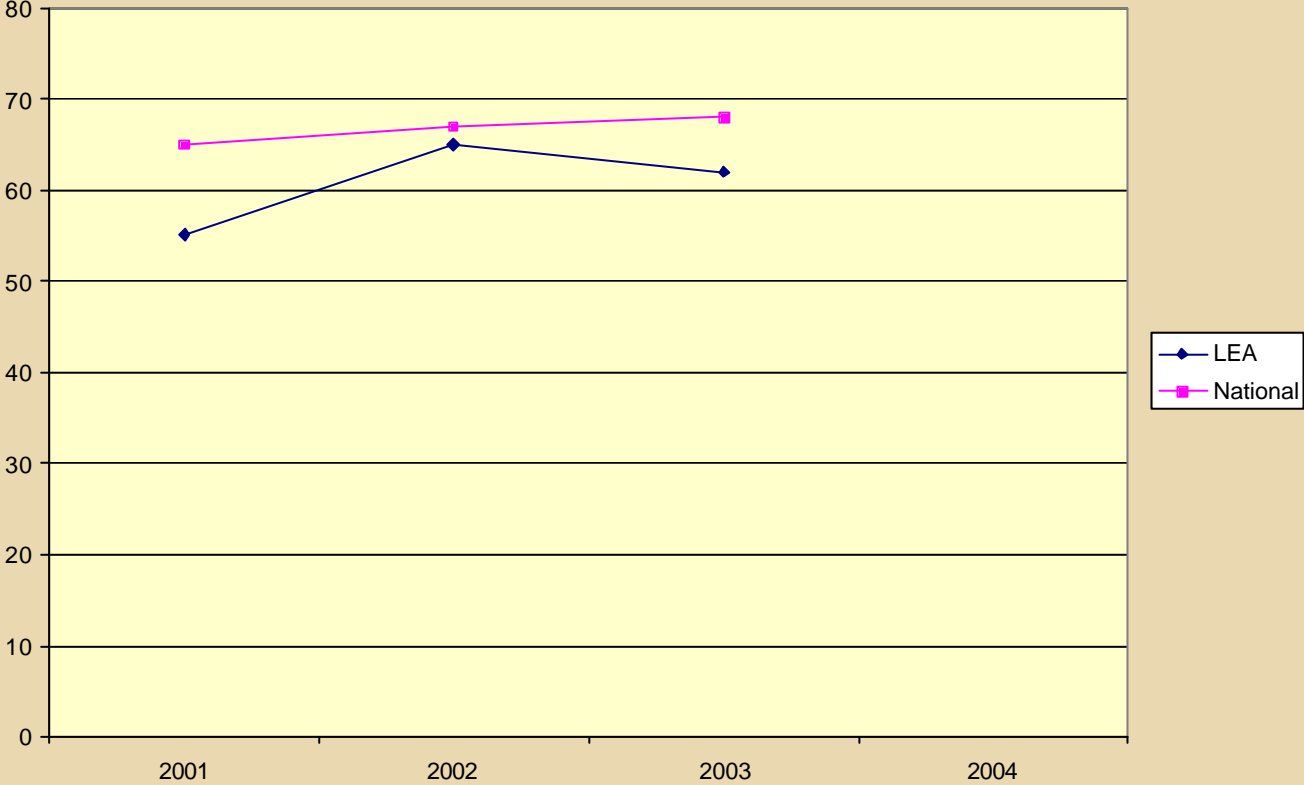
KS3 Maths L5+ (LEA)



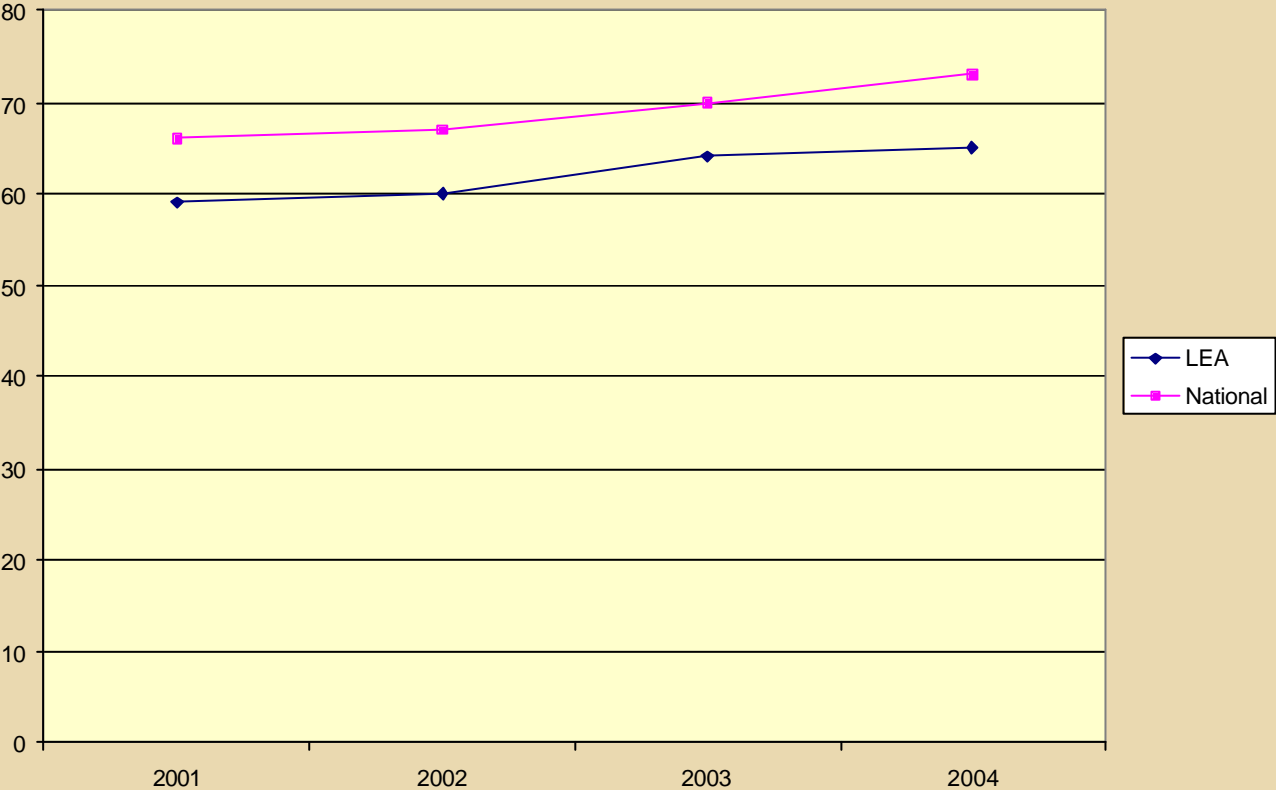
KS3 Science L5+ (LEA)



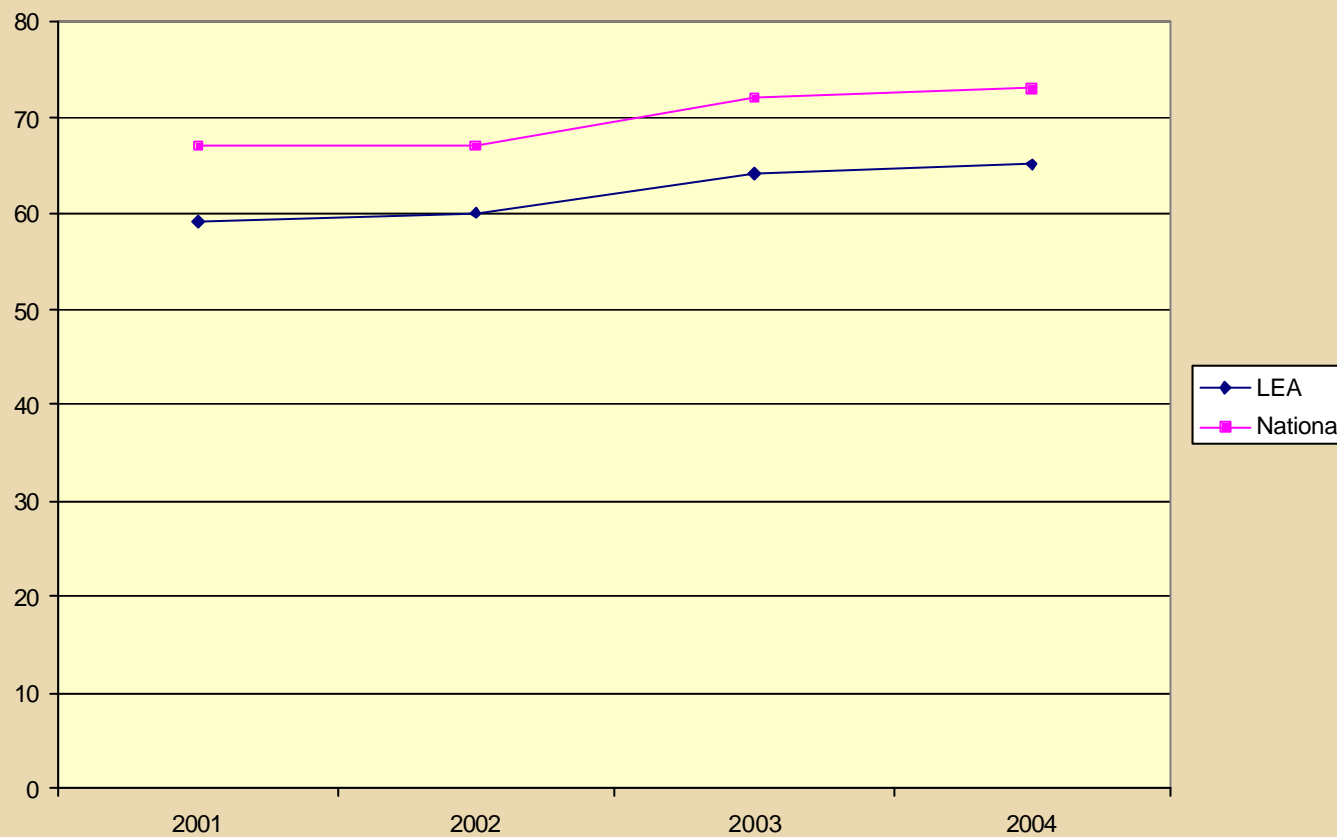
KS3 English L5+



KS3 Maths - L5+



KS3 Maths - L5+

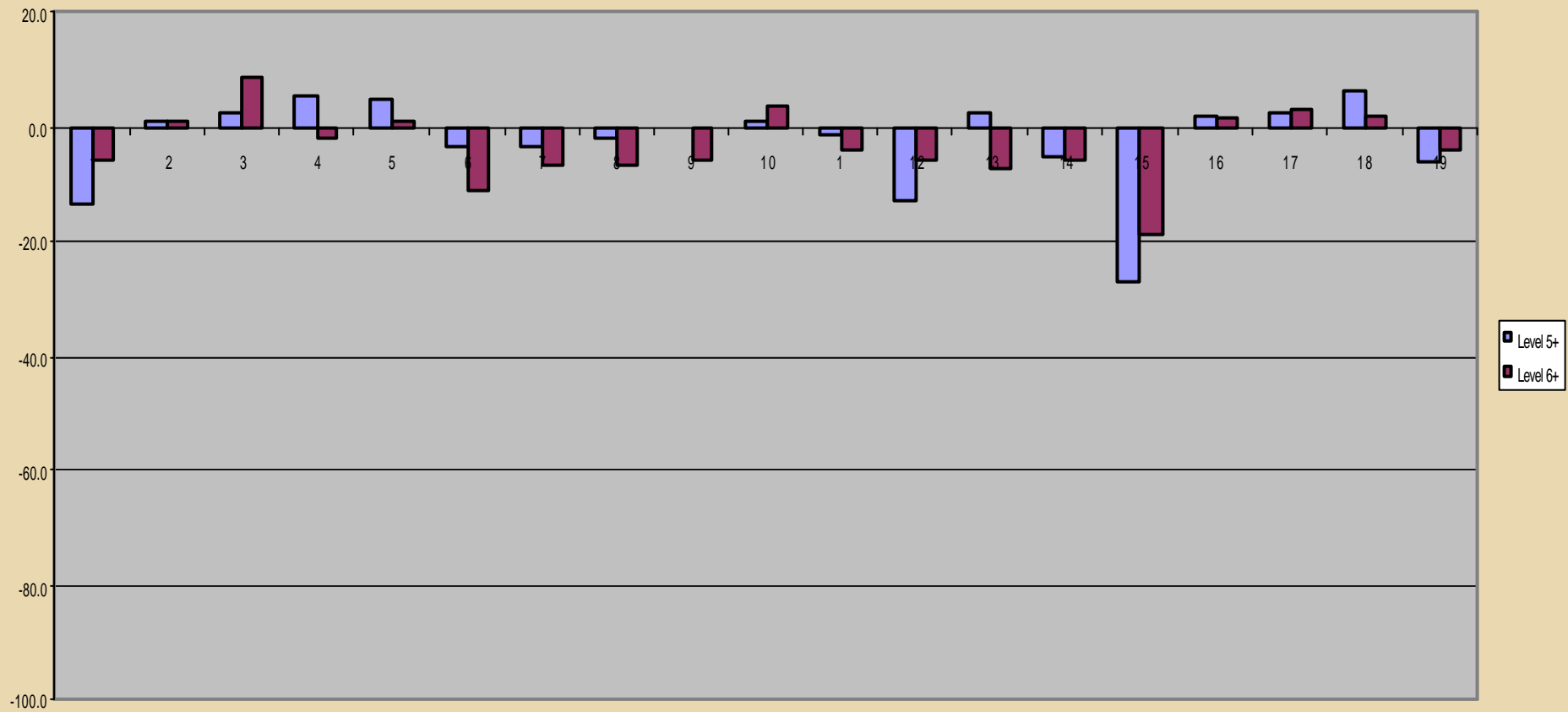


		Actual	Expected	Difference
		2004	Similar	
English L5+			67	
Maths L5+		65	67	-2
Science L5+		58	65	-7

Key Stage 3 English – Value Added

Education Walsall

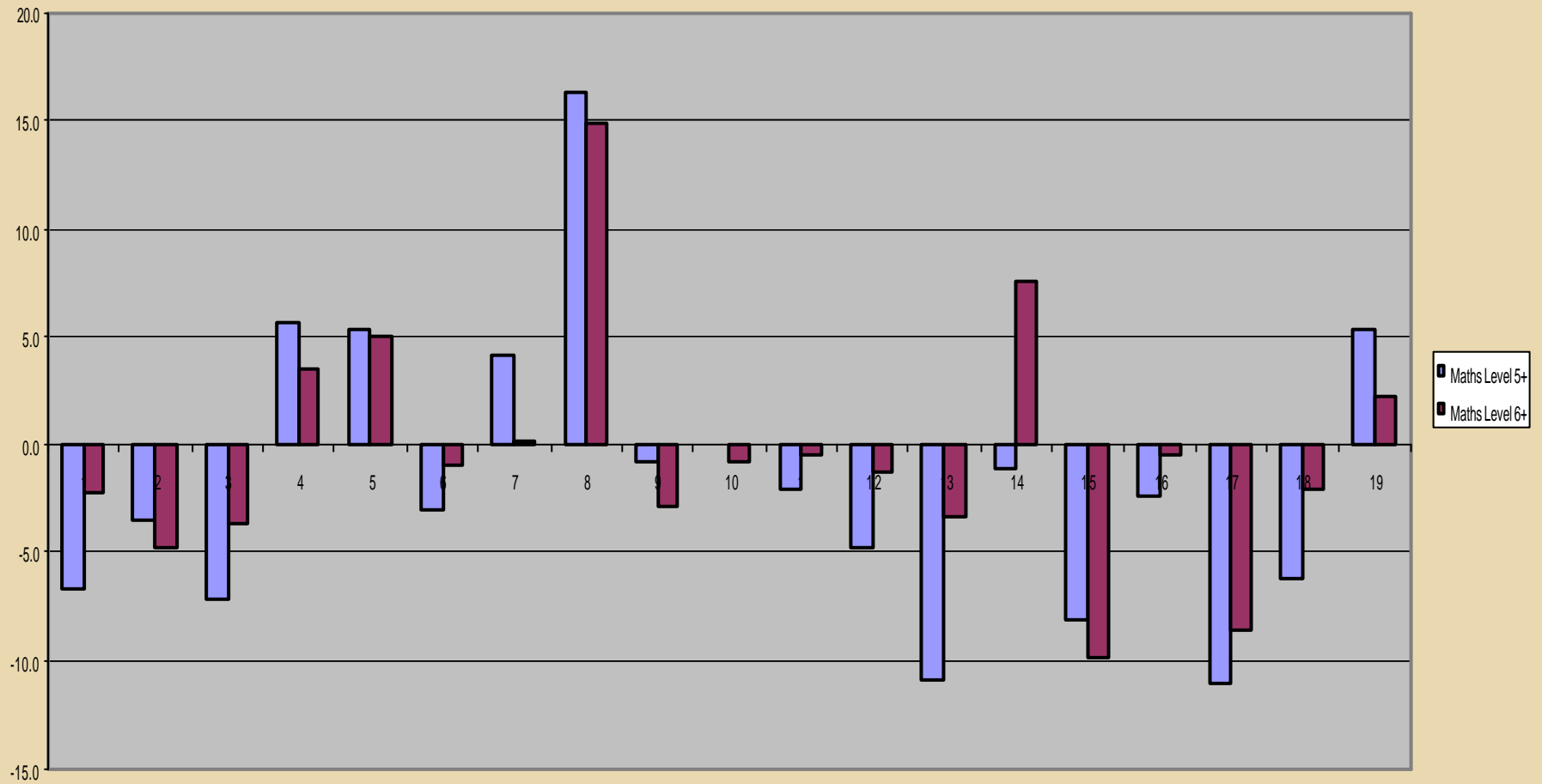
English KS3 difference between similar school estimates and actual results



Key Stage 3 Maths – Value Added

Education Walsall

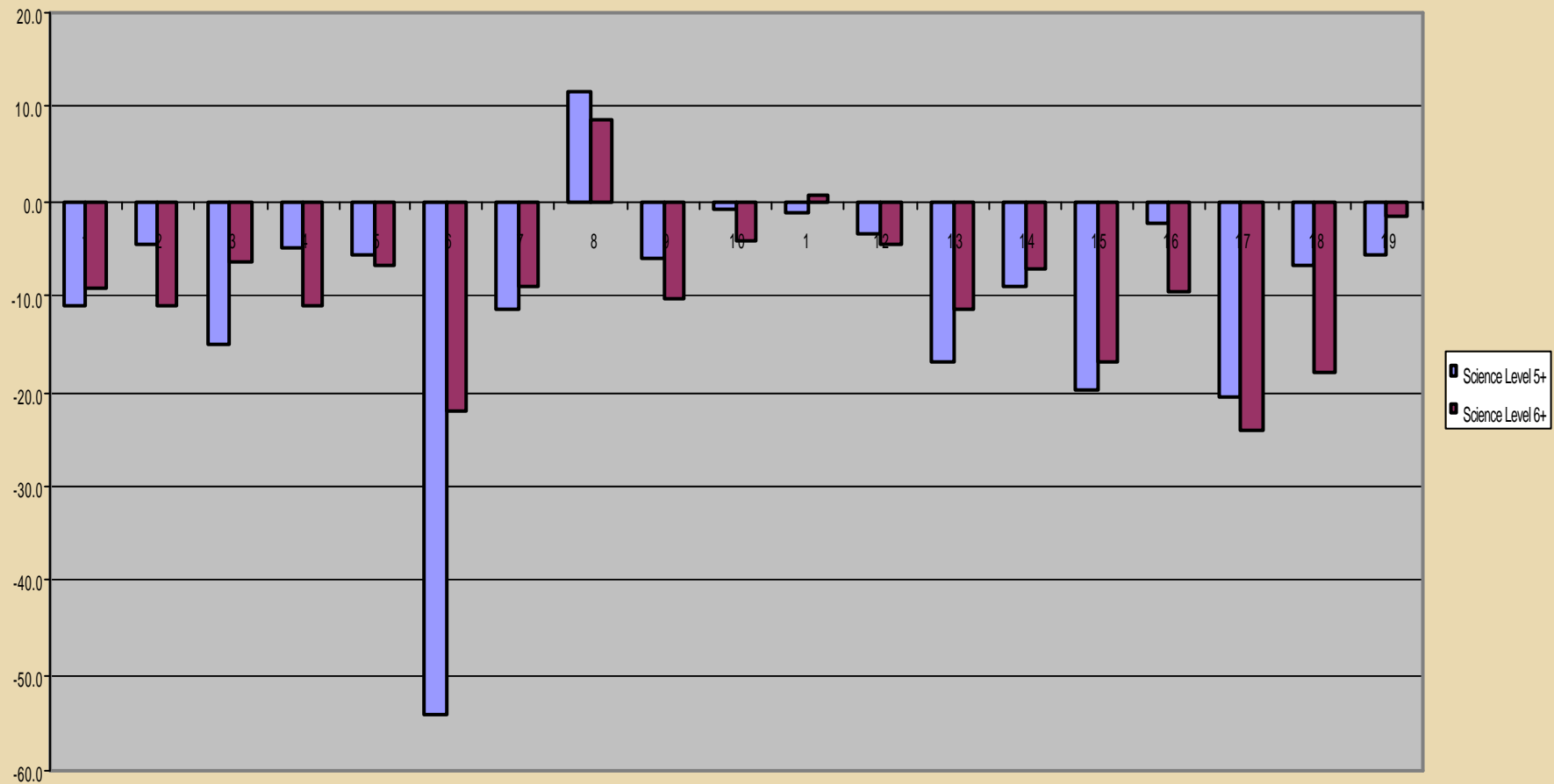
Maths KS3 difference between similar school estimates and actual results



Key Stage 3 Science – Value Added

Education Walsall

Science KS3 difference between similar school estimates and actual results



GCSE 5+ A*-C

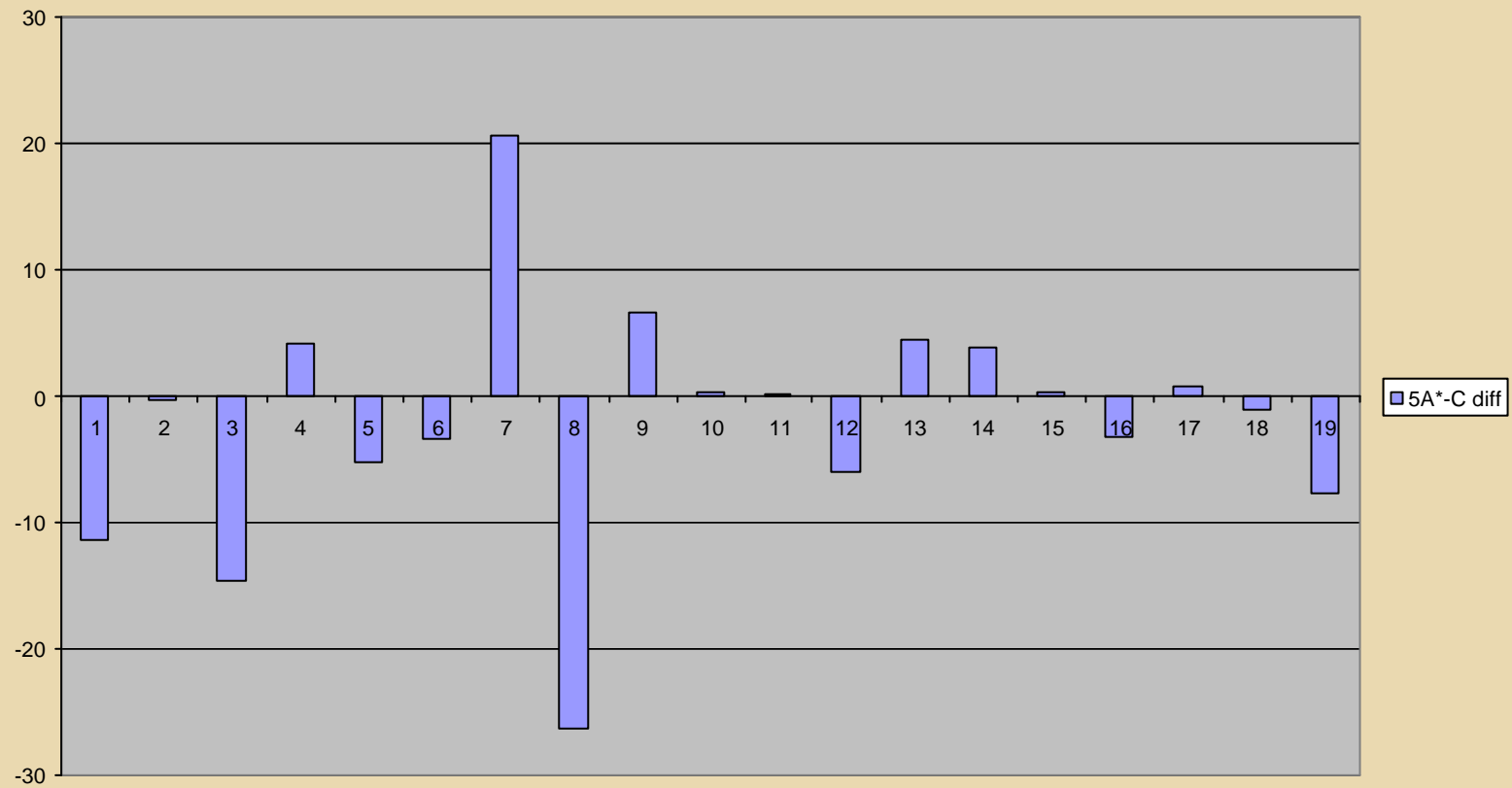
	2001	2002	2003	2004	03-04	01-04
Walsall	41	42	43	45	+2	+4
National	50	52	53			

		2004	Similar	
5+ A* - C		45	46	

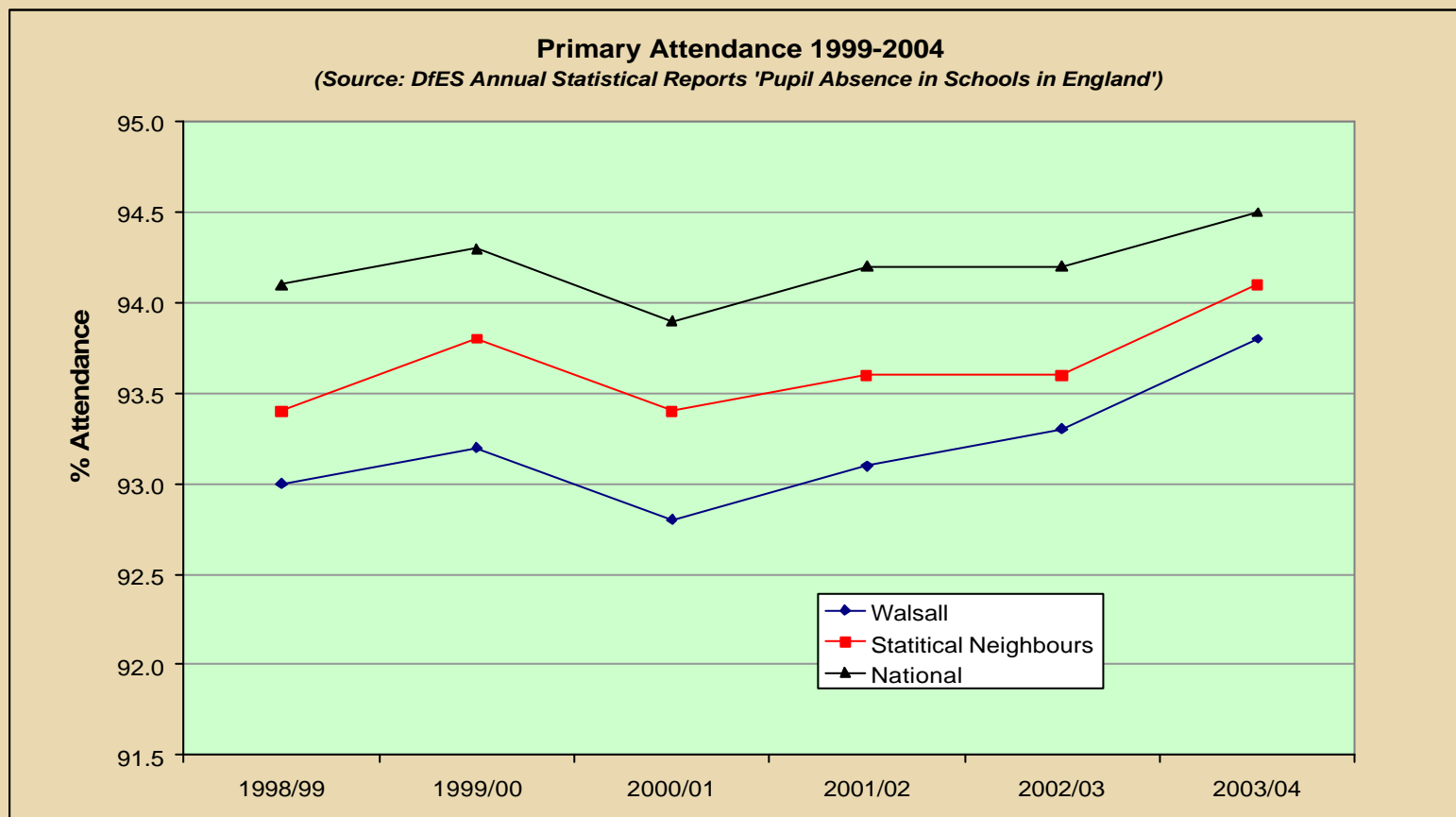
Key Stage 4 – Value Added

Education Walsall

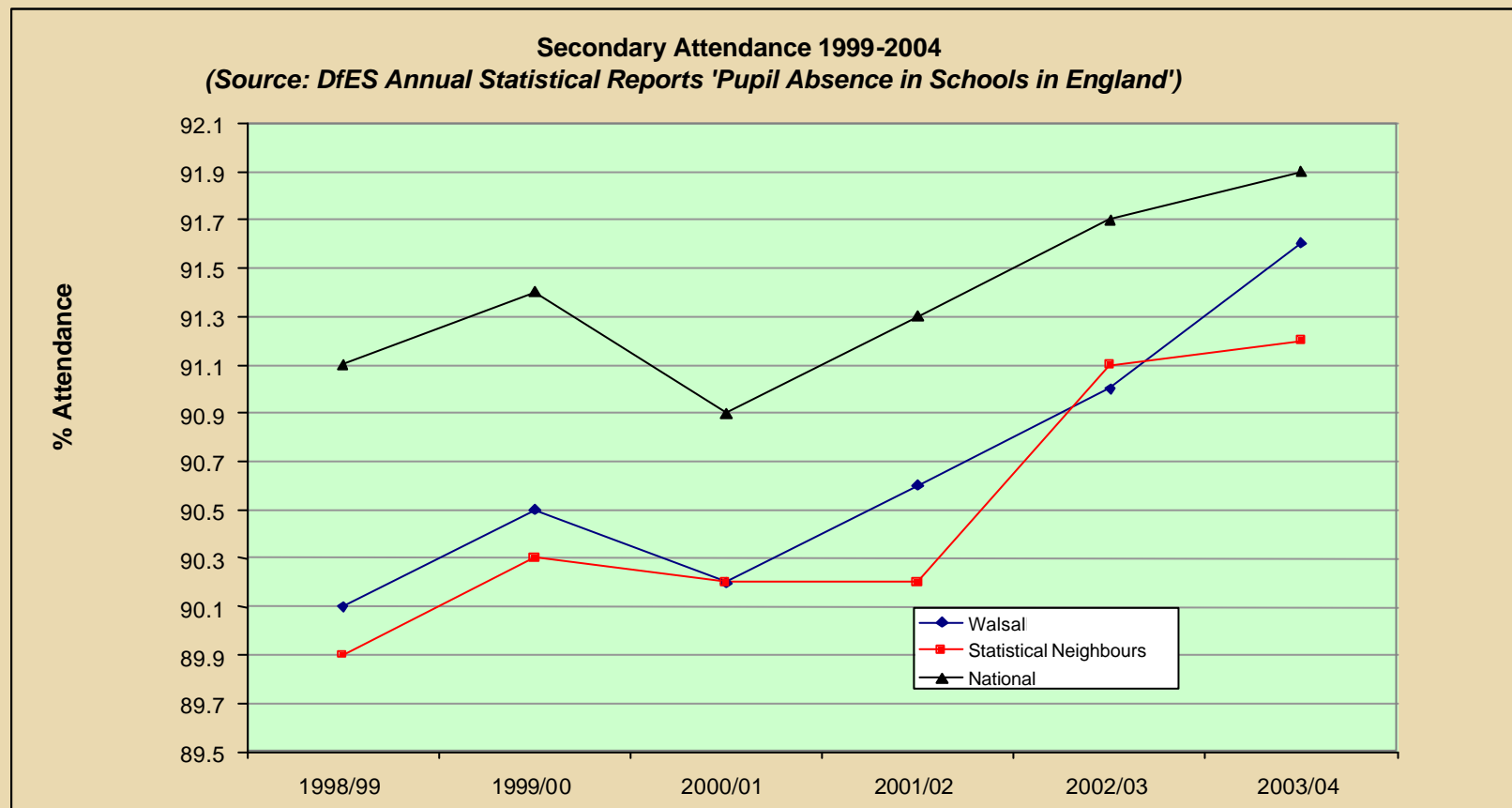
5A*-C difference



Primary - Attendance



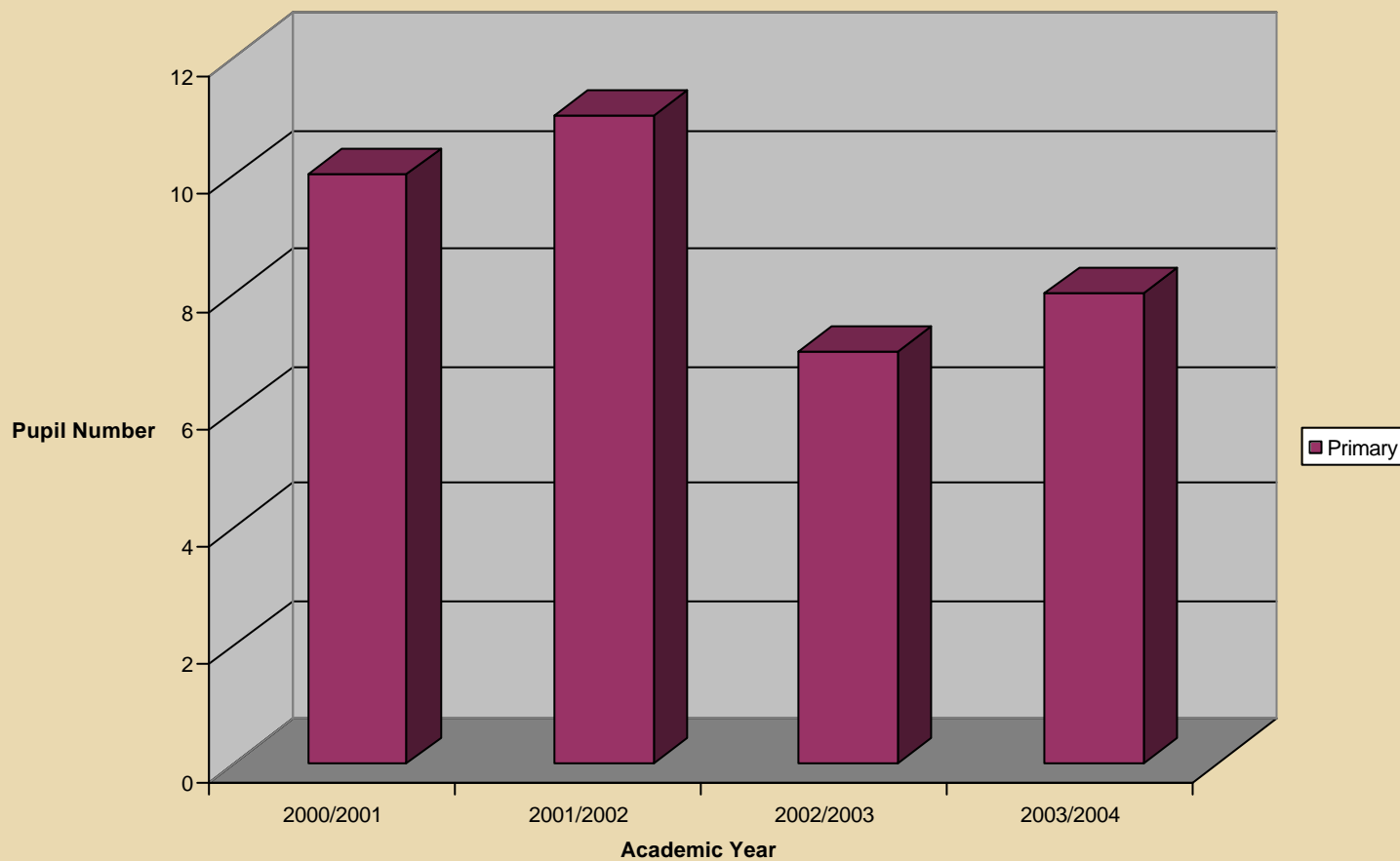
Secondary - Attendance



Primary - Permanent Exclusions

Education Walsall

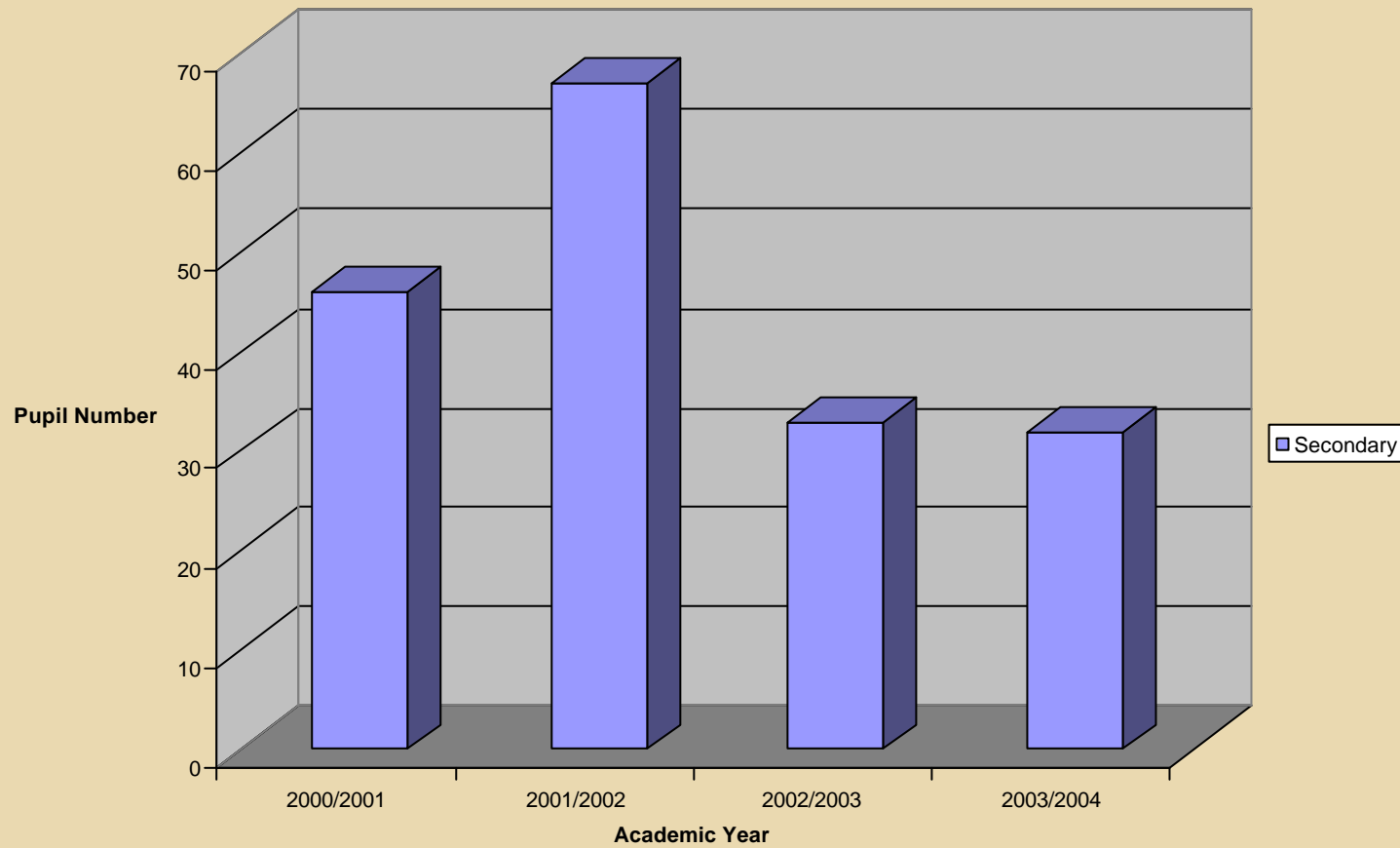
Primary Permanent Exclusions 2000-2004



Secondary – Permanent Exclusions

Education Walsall

Secondary Permanent Exclusions 2000-2004



Exclusions Summary

Education Walsall

All Walsall Schools 2000-2004

