



Walsall Council

serco

School Improvement Supporting Strategy

Methodology

Shannon Moore

Head of Improvement Services



Changes to inspection framework

the bar has been raised again!

- A new Framework for Inspection from September 01, 2012.
- Grades: outstanding (1), good (2), *requires improvement* (3) and inadequate (4).
- Grade descriptors have been changed (e.g. OE 1 if T/L 1).
- Schools that 'require improvement' will be inspected earlier than good schools and within a maximum of two years.
- Such schools will require 'special measures' if after two further inspections they are not good within a 4 years.



Changes to inspection framework

the bar has been raised again!

- Contacted 12.00 noon onwards the day before inspection.
- Impact of governors, LA and Academy sponsor judged.
- The robustness of appraisal examined.
- School websites will be used and Raise on Line reports on performance *over the last three years* (Floor Targets).
- Value-added (VA) measures have replaced contextual VA.
- Performance of vulnerable groups.
- HMI monitoring.



Methodology

- Initial data analysis.
- Develop a risk assessment (DSIN*) - shared with schools.
- Most vulnerable schools receive a detailed analysis (PIB)*
- PRG meets monthly, involving HT, CoG, to monitor progress
- In most cases a SSR* used to check progress/gather evidence
- Support deployed proportionate to need
- Discussions with CoG and HT where academy sponsorship may bring additional capacity.



Strategic approach

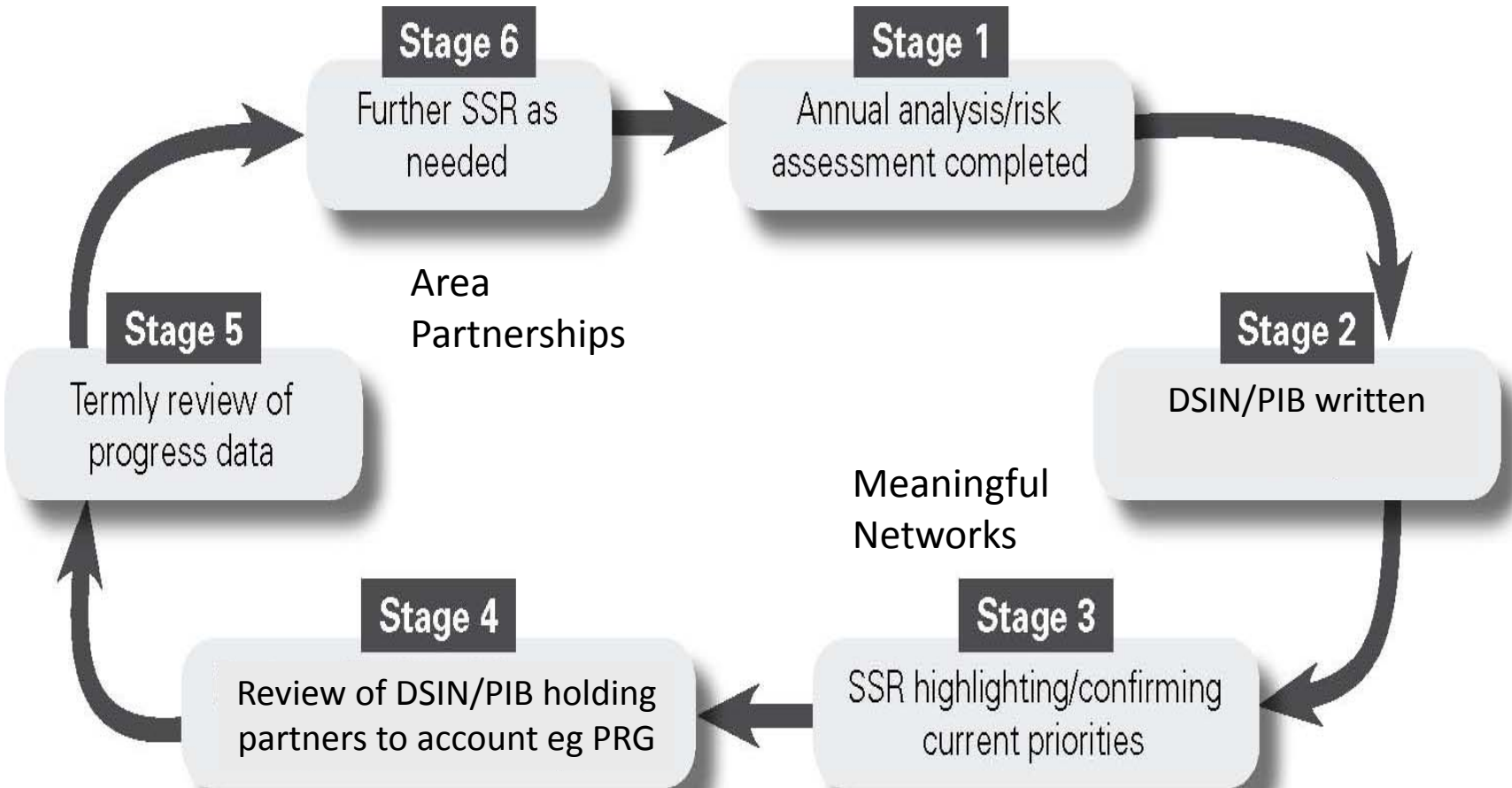
- Spreadsheet to predict possible inspection date and grade.
- Senior advisers monitor the impact on outcomes on fortnightly basis and report to the heads of service.
- The heads of service report to Walsall Children's Services - Serco Leadership team.
- Historic data of attainment, progress and Ofsted results are monitored and analysed to identify schools causing concern.
- The DCS meets the DfE on a termly basis to consider 'schools causing concern'.



Strategic approach continued

- Statutory powers of intervention are used as necessary.
- If a school has an overall inadequate judgement following an Ofsted inspection a recovery plan is developed with the school which is monitored by HMI.

Our Methodology





Current (Sept 2012) predicted overall effectiveness outcomes:

- 8/41 to improve from satisfactory
- 26/41 predicted to remain the same
- 7/41 predicted to dip



Of the 15 predicted to remain satisfactory:

- 6 have a PRG in place;
- 1 has a SSR in place which could result in a PRG;
- 1 is a Federation and has a very bespoke approach;
- 3 are academies and are no longer in direct LA control;
- 1 has a newly appointed and effective Headteacher with a very bespoke approach;
- 1 is in transition to academy status for January 2013;
- 1 had a PRG and is now more secure;
- 1 confident that they can sustain improvement.



Of the 7 predicted to dip:

- 1 has already been inspected and has now been placed in serious weaknesses. The PRG remains in place and helped to secure the judgement that the school had capacity to improve (not SM).
 - 1 is a sponsored academy which could go into a category.
 - 1 has a PRG in place; it has had an SSR and is currently awaiting inspection.
 - the 1 school predicted to dip from good to 'requires improvement', the school has received a SSR and a PRG is in place and is part of a federation with the one predicted to go from outstanding to good.
 - The other 2 are predicted to drop from good to 'requires improvement', may be able to avoid this depending on the time of the inspection.
- ❖ *DSIN: Diagnosis, Support, Impact, Next Steps; PIB: Pre-Inspection Briefing; PRG: Partnership Review Group; SSR: Supported Self Review; IEB: Interim Executive Board*



Schools currently in an Ofsted category

- One is already an academy and the other two are in the process of becoming a sponsored academy.