



Strengthening Families, Protecting Children Family Safeguarding Model



Family Safeguarding, Children's Overview and Scrutiny Committee January 2021



Walsall Council

PROUD OF OUR PAST OUR PRESENT AND FOR OUR FUTURE

Purpose and overview

- Update the committee on progress
- Give oversight of the approach
- Develop sustainability of model

Family Safeguarding- Background

- Funded by the Department of Education (DFE), a partnership approach developed in Hertfordshire.
- Walsall went live on the 1st September 2020, paused since April 2020.
- Externally evaluated by “What Works” centre.
- The crucial principle being the best ways to keep children safe are by supporting families/parents wherever possible.
- Offered to families/parents with substance abuse, mental health and or domestic abuse, where children are under 13.
- Eligible families identified following a Child and Family assessment.

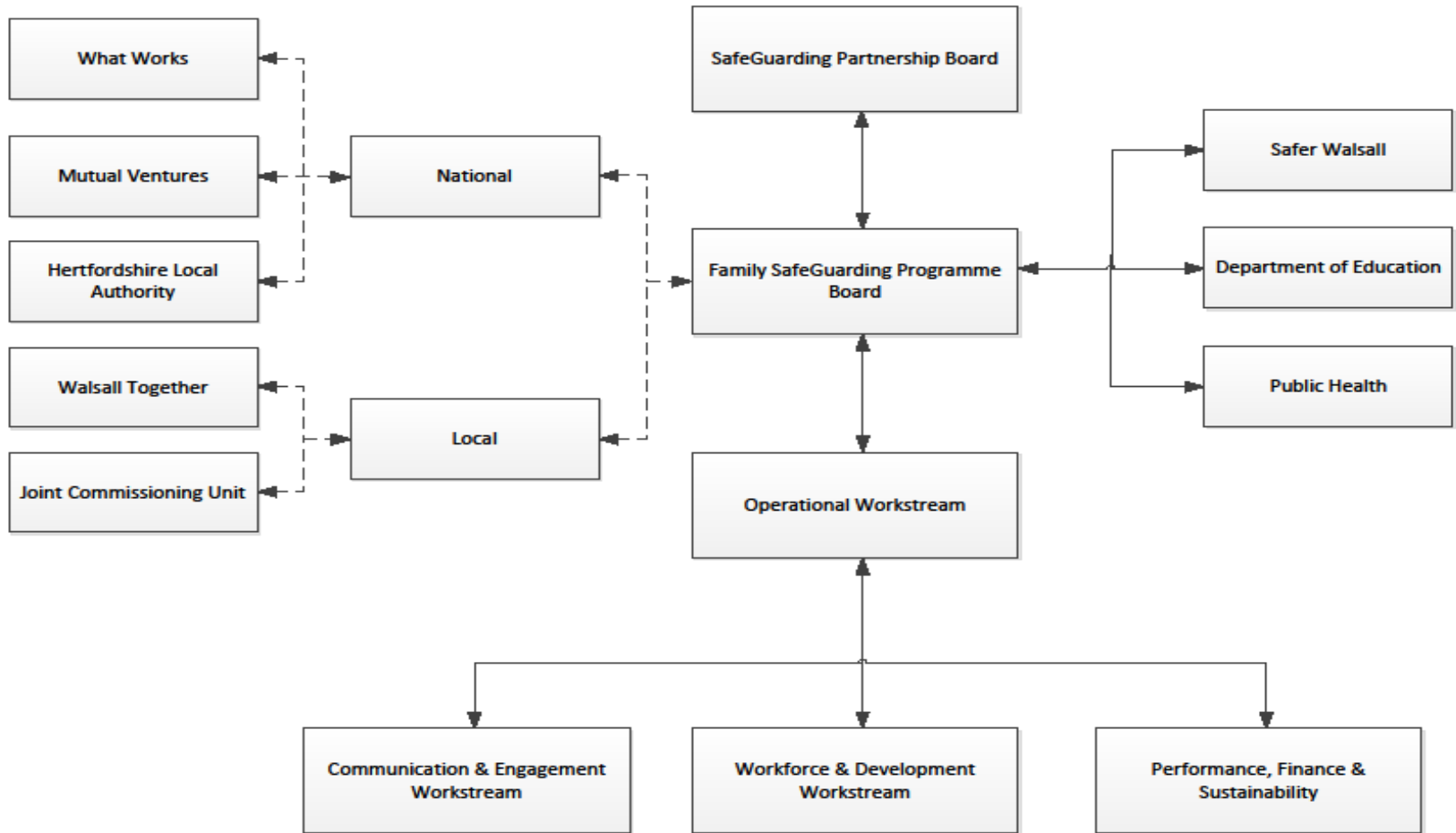
Components Family Safeguarding

- A co-located partnership approach to working
- Safeguarding teams work on a locality basis
- Adult workers from partner organisations are an active part of the team and are co-located with social workers
- There is a shared recording system for practitioners which includes entries from the adult specialist workers
- Every month there is a group supervision with all co-located workers involved in the case, led by the team manager.
- There is a family assessment/programme , carried out by the social worker with input from the range of adult specialists this includes 8 modules, and direct work with the children.
- Motivational interviewing is a core skill and is strengths based and restorative approach and uses the cycle of change model

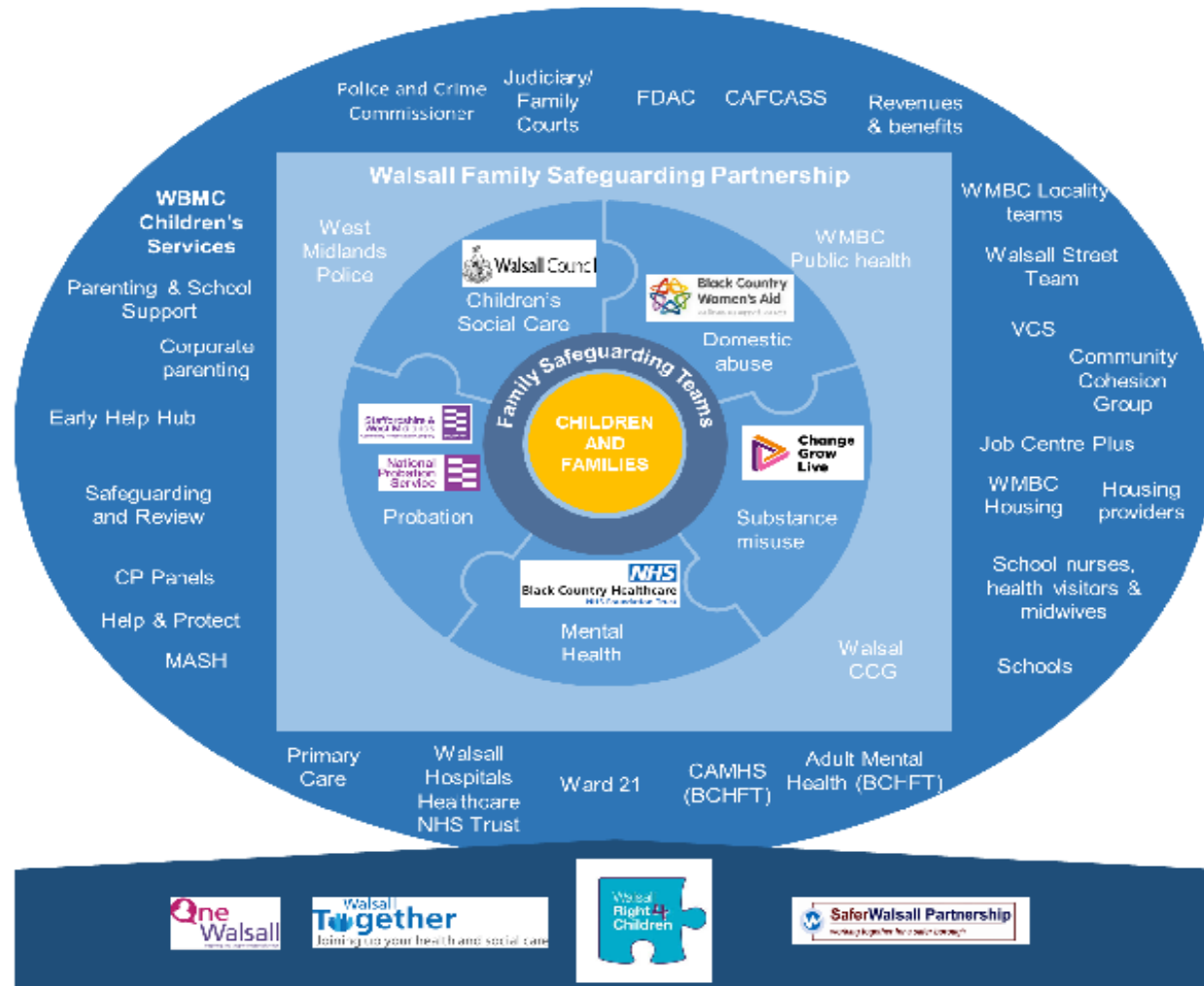
Governance Overview

- **National accountability** :There is accountability to the DFE via quarterly returns, which include an overview of progress, risks and issues, objectives for the next quarter, programme finances and performance data see previous documents here
- **Local accountability** : Since the family safeguarding model is about partnerships at its heart, the accountability and lines of escalation are through the Walsall Safeguarding Partnership. As part of this accountability there are informal updates, reports by exception and quarterly dashboards to the Leadership Group as required and relevant sub-committees. Since the programme is hosted in Walsall Metropolitan Borough Council, the organisation's rules on financial conduct and employment practice and risk register are also followed or used.

Governance structure



Strategic context



Main progress

- Went live 1st September
- Launch 20th October (250 attended)
- Engaged with wide range of partners (including 120 head teachers, 90 GPs , regional Judiciary)
- High quality training for all staff
- Employed 14 of 16 adult specialist workers
- Developed a clear outcome framework with key performance indicators , also includes equality
- Moving to a critical thinking evidence based approach to evaluation, to establish the magic ingredients for walsall
- An approach to working well with health visitors school nurses and education

DfE evaluation of children's Social Care innovation-Overall headlines

<https://www.gov.uk/government/publications/childrens-social-care-innovation-programme-round-2-evaluation>

- The centrality of building consistent, trusting relationships, and providing time for this.
- The focus on bolstering and leveraging strengths and resources to identify solutions and working together to support progress towards positive outcomes.
- The provision of multi-faceted support to address multiple needs and issues in a holistic, coherent, and joined-up way .

Systemic Conditions

- improving practitioner time capacity and service capacity to enable sufficient time for work (including direct work) on each case
- using shared, evidence-informed practice methodologies and tools, and providing training and skilled supervision to support this
- providing integrated multi-disciplinary specialist support enabled by group case discussion (including, most notably, input from specialists in mental health)
- improving multi-agency collaboration
- engaging in thoroughgoing consultation on and/or co-production of services.

National findings from second wave evaluation of family safeguarding

https://assets.publishing.service.gov.uk/government/uploads/system/uploads/attachment_data/file/932367/Hertfordshire_Family_Safeguarding.pdf

- Reduces rate of looked after children and numbers on child in need plan
- Reduces police call out and mental health crisis help requests
- Break even occurs relatively rapidly, though smaller authorities reach this point later
- Adult workers are important, not just because of their direct work but also input to group supervision and RAG rating
- Interventions with perpetrator, emerging evidence that this is especially important/different to other models

Sustainability

- Setting up dashboards and data collection internally and with partners
- Using and circulating national research evidence
- Collecting and sharing positive stories about staff experience
- Collecting and sharing stories about impact on families
- Improving local and strategic relationships with key partners