



# Health and Overview Scrutiny Committee

A high level description of how the Health & Social Care System is working

14<sup>th</sup> July, 2022



# Kings Fund short video

<https://www.kingsfund.org.uk/audio-video/how-does-nhs-in-england-work>

# Adult Social Care & Hub

## Assessment & Care Management

- Safeguarding Adults and Mental Capacity Act/Deprivation of Liberty
- Special Educational Needs and Disabilities in Transition to Adulthood (in development)
- Assessment and Reviews of Eligibility, Needs, Care and Support for Social Care in:
  - Mental Health (including dementia and AMHP rota)
  - Learning Disabilities and/or Autism
  - Physical and/or Sensory Disabilities
  - Older peoples services
  - Occupational Therapy
  - Hospital Discharge
  - Access - Advice, Information, Signposting
  - Enablement and Recovery
- Walsall Together Integrated Service
- Services for Learning Disabilities (Day and Respite)
- Workforce Development for Adult Social Care
- Principal Social Work
- Principle Occupational Therapy Strength based Practice

## Commissioning

- Adult Social Care Commissioning
- Contract Management
- Procurement
- Performance
- Brokerage
- Third Party Spend
- Market Shaping & Development

# WMBC – Adult Social Care Commissioning

The Care Act 2014 is an Act of the Parliament of the United Kingdom that received royal assent on 14 May 2014, after being introduced on 9 May 2013. The main purpose of the act was to overhaul the existing 60-year-old legislation regarding social care in general responsibilities include;

1. Promoting individual well-being
2. Preventing needs for care and support
3. Promoting integration of care and support with health services etc
4. Providing information and advice
5. Promoting diversity and quality of provision of services

As part of the Act the LA has responsibility for market management for all CQC registered services in the borough, therefore all services we commission, review, retender or extend are required to support ASC in discharging its duty under the act with strength based practice and outcomes delivery embedded

Services include step up/down, reablement pathways and long term services and our customers can choose to spend their individual budget through a direct payment or on a commissioned service

# WMBC – Adult Social Care Commissioning

## Domiciliary Care Framework;

- 36 providers delivering care across the borough (17 Local, 17 Regional & 2 National Providers)
- Supporting 1281 service users per week, delivering 22,810 hours per week, costing £355,191 per week

## Residential and Nursing placements – add spend for 2021/22

- 45 Residential homes (24 x OP, 2 x MH and 19 x LD)
- 13 Nursing Homes
- Total beds registered with CQC 1773 with 23% vacancies



# Future Commissioning Opportunities

Walsall Council is currently scoping and developing a place based care commissioning framework to support all age groups, and need categories.

The aim is to bring local needs together with a broad range of provider organisation, including the voluntary sector, to reimagine care and deliver interventions that avoid or delay the need for hospital admission, and further enhance discharge performance.

# WMBC – Adult Social Care Commissioning

Intermediate Care Service (pathways 0- 5) provided to patients, usually older people, after leaving hospital or when they are at risk of being sent to hospital;

- Pathway 0 – 50% patients straight home
- Pathway 1 - 45% some support and home
- Pathway 2 – 4% short stay in bed (reablement)
- Pathway 3 – 1% nursing home/long term care
- Pathway 4 – manage into hospice/end of life at home

# WMBC – Adult Social Care Commissioning

- Supported Living
- Extra Care
- DPSS
- Carers Centre
- Healthwatch
- Range of other contracts including advocacy, ....



# Changes to impact on Adult Social Care; Reform, Fair Cost of Care & Future Inspection Arrangements

- **Adult Social Care Reform**
- In September 2021, the Government set out plans to reform adult social care in England (PDF). The reforms are to be funded through a new tax, the Health and Social Care Levy. £5.4 billion of revenue from the levy will be spent on adult social care over the next three years (2022 to 2025)
  - Cap on Care
  - Means Testing Parameters
- **Fair Cost of Care Fund & Conditions** - “A process of engagement between local authorities, commissioners and providers, data collection and analysis by means of which local authorities and care providers can arrive at a shared understanding of the local cost of providing care. The cost of care exercise will help local authorities identify the lower quartile, median and upper quartile costs in the local area for a series of care categories”
  - LAs are required to “move towards” paying providers a fair cost of care over the 3 years 2022-25
  - Required to submit a cost of care exercise report, outline Market Sustainability Plan (MSP) and spend report by 14th October 2022
- **Inspection Arrangements**
  - The Care Quality Commission have been given a new duty to independently review and assess how Local Authorities are delivering their Care Act functions
  - The assurance framework will go live in 2023/2
  - Early Ministerial interest in a rating system similar to the existing CQC framework: outstanding, good, requires improvement, inadequate.
  - The overall rating and scores for the quality statements will be published alongside a narrative report.



# Health Services in Walsall

## **NHS Providers High Level Summary**

### **Walsall Healthcare Trust:**

Manor Hospital (Emergency Department/Intensive Care/Outpatient Clinics/Electives), Community Health Services (Care Navigation Centre/Rapid Response/Virtual Ward/Community Nurse Teams/Specialist Nurse Teams/Intermediate Care Discharge Pathways), Children's and Maternity Services

### **Primary Care Services:**

52 GP Practices, Urgent Treatment Centre, Out of Hours, Extended Access, Children's Respiratory Hub

### **Black Country Partnership NHS Foundation Trust:**

Dorothy Pattison Hospital, Bloxwich Hospital, Community Mental Health Services, Children and Adolescent Mental Health Services, Learning Disability Services, Autism, Eating Disorders

### **West Midlands Ambulance Service**

### **Community Pharmacists/Dentists/Opticians**

# Integrated Care Systems

## Integrated care systems (ICSs)

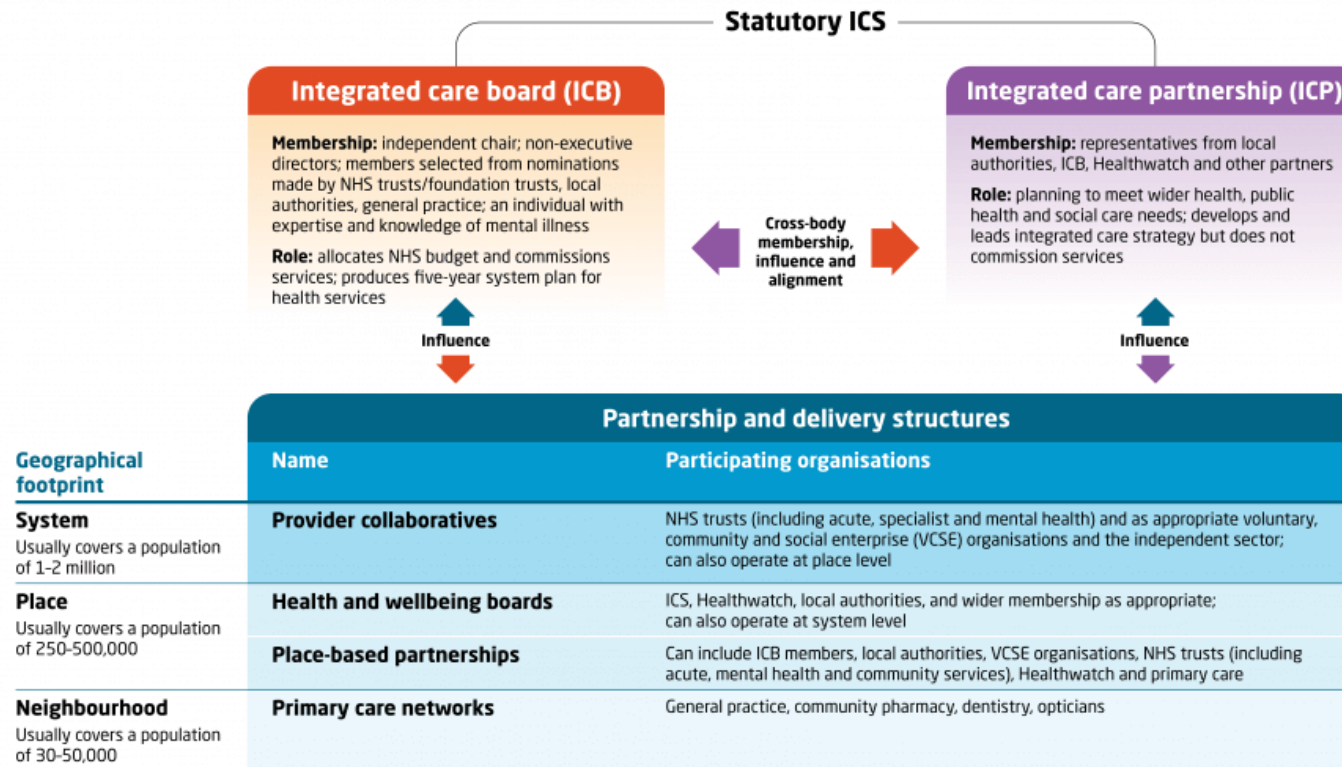
Key planning and partnership bodies from July 2022

### NHS England

Performance manages and supports the NHS bodies working with and through the ICS

### Care Quality Commission

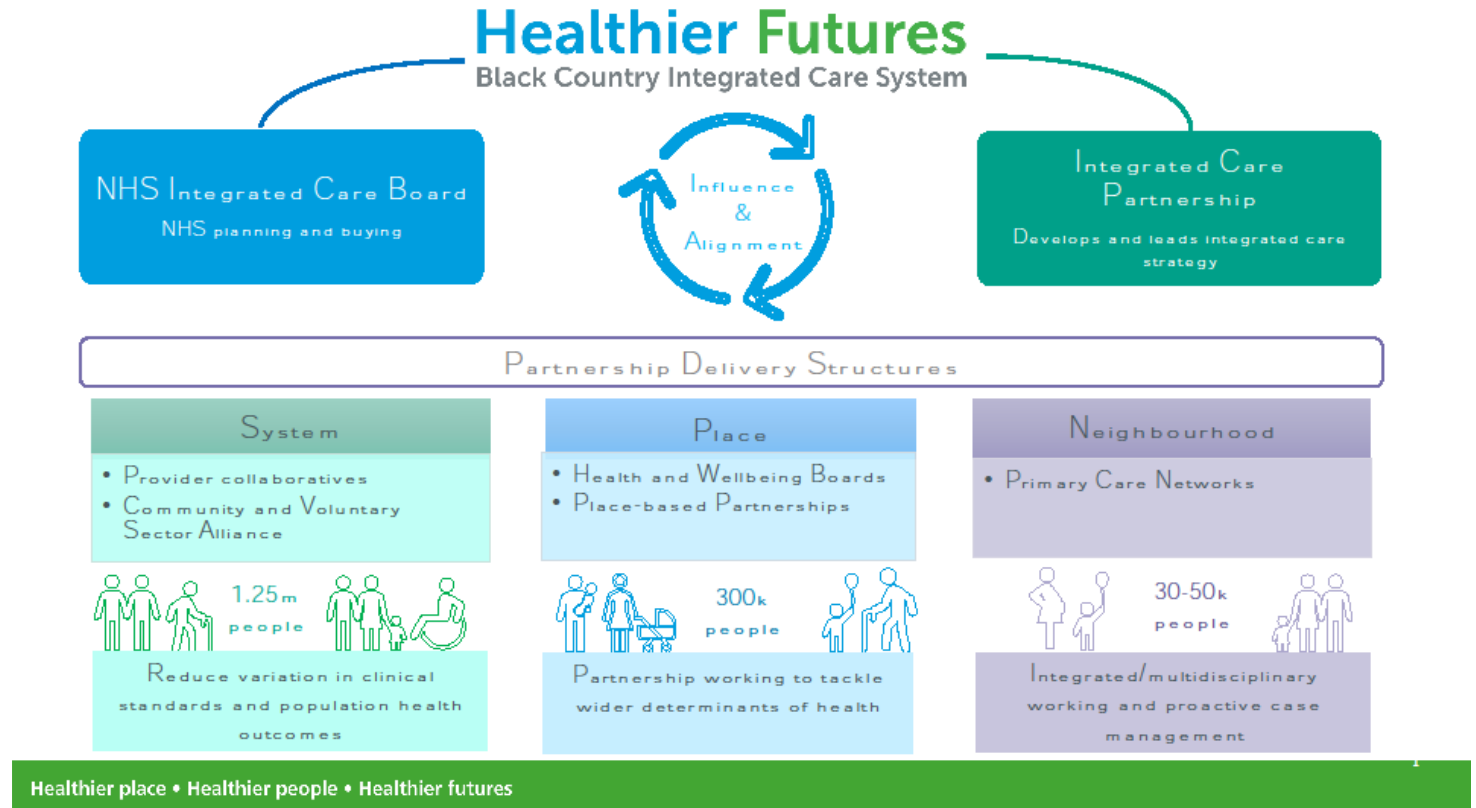
Independently reviews and rates the ICS



TheKingsFund

# Integrated Care System – Black Country

Our **Integrated Care System (ICS)**, known as **Healthier Futures**, brings providers and commissioners of NHS services together with local authorities and other local partners to **plan and deliver joined up services** and to **improve the lives of people** who live and work in the Black Country.



# Integrated Care System – Black Country

## **NHS Provider collaborative**

- The Provider collaboratives bring NHS providers together to achieve the benefits of working at scale across multiple places, to improve quality, efficiency and outcomes and address unwarranted variation and inequalities in access and experience. In the Black Country we have emerging collaboratives across our providers of acute and community care (including mental health) and increasing collaboration across our primary care services.

## **Primary care collaborative**

- The Black Country Primary Care Collaborative has been established to promote the interests, wellbeing and sustainability of Primary Care services and more importantly, to ensure that a single voice for primary care is properly heard in decision making at all levels.

## **Voluntary, community and social enterprise sector**

- Black Country Partnership VCSE Alliance - a forum for the voluntary, community and social enterprise (VCSE) sector to work with NHS partners and Black Country Together CIC - formed by the four Councils for Voluntary Service in the Black Country.

## **Healthwatch**

- Healthwatch partners in the Black Country are working together to be the public champion for both health and social care services.

# Integrated Care Board

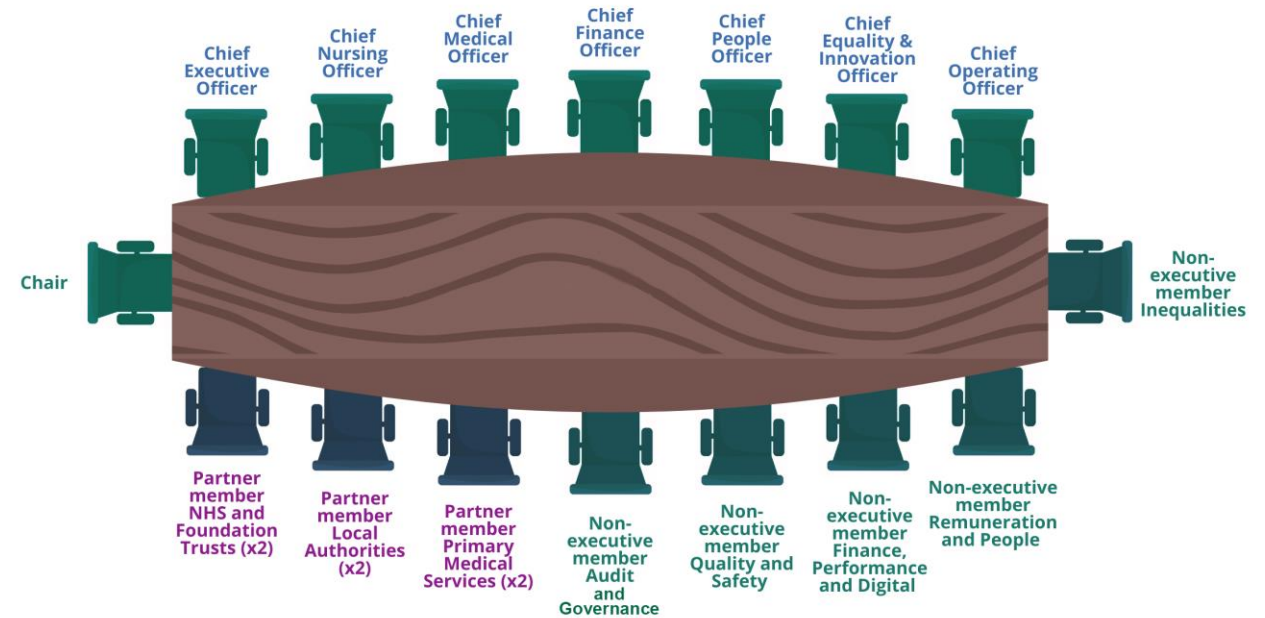
From Friday 1 July the Black Country Integrated Care Board (ICB) has been formally established and replaces the NHS Black Country and West Birmingham Clinical Commissioning Group (BCWB CCG).

Dissolving the CCG and establishing the ICB follows Parliamentary approval and Royal Assent of the new Health and Care Act 2022, which outlines how effective collaboration and better partnership working will become commonplace for local health and care providers.

In addition to taking on the existing responsibilities of the BCWB CCG, the Black Country ICB will be responsible for planning and coordinating services on behalf of 1.26 million local people as well as managing the local NHS budget.

The ICB, which covers Dudley, Sandwell, Walsall and Wolverhampton, is a wider network of local health and care organisations that will, along with councils, community providers and voluntary sector groups, plan and organise how health and care services can be delivered across the Black Country.

## Board of the Black Country Integrated Care Board



Participating attendees – Directors and employees of the Integrated Care Board, Directors of Public Health, representatives of partner NHS Trusts, Healthwatch and the Voluntary Sector Alliance.

# ICB Priorities

## System-wide priorities

**Our ICB will support the delivery of three system-wide priorities across the Black Country Integrated Care System (ICS). These are:**

- building healthier, happier communities
- making the Black Country the best place to work
- creating a system that is fit for the future.

## National NHS priorities

**We will also support delivery of these national priorities:**

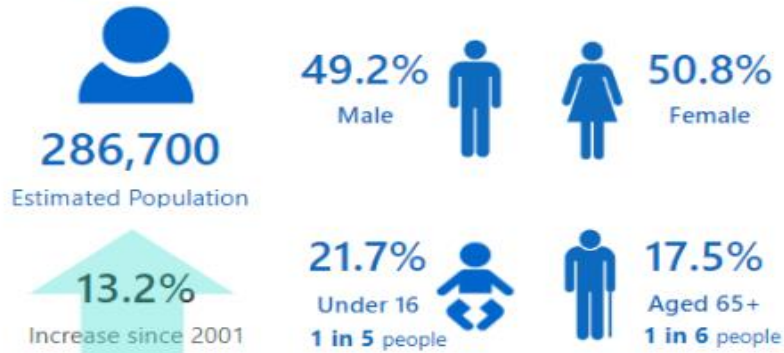
- investing in our workforce
- responding to COVID-19 effectively
- tackling the elective backlog, reducing waiting times and improving performance against cancer waiting times standards
- improving responsiveness of urgent and emergency care and building community capacity
- improve timely access to primary care
- improving mental health services and services for people with a learning disability and/or autistic people
- continue to develop our approach to population health management, prevent ill health and address health inequalities
- exploit use of digital technologies
- make the most effective use of resources.

One of our key tasks will be the development of a **five-year strategic plan** which will take into account the above priorities and ensures alignment with local priorities and strategies produced by the integrated care partnership, the joint strategic needs assessments and joint health and wellbeing strategies produced by the relevant health and wellbeing board(s).

# The public health context for Walsall - overview

## Demographic Overview of Walsall

### Population



### Ethnicity

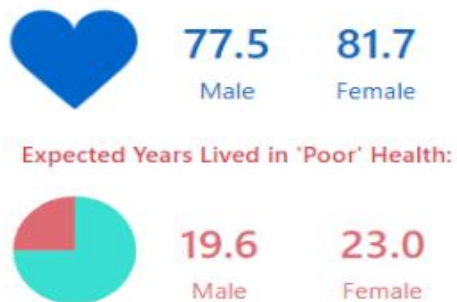


### Walsall

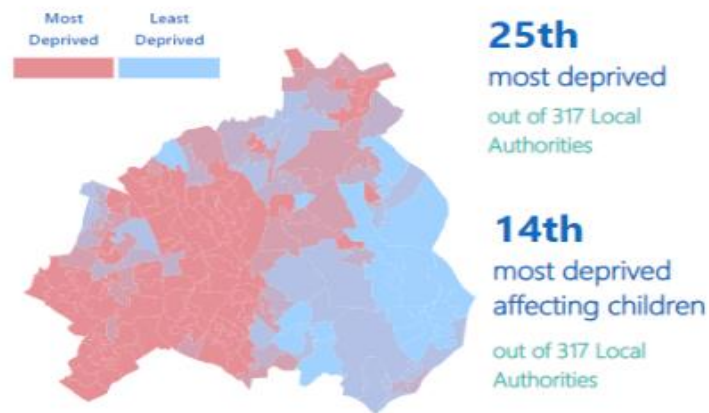
Walsall is situated within the West Midlands and is one of four Local Authorities comprising The Black Country. It contains six urban district centres: Walsall Town Centre lies at the heart of the borough, surrounded by Aldridge, Bloxwich, Brownhills, Darlaston and Willenhall. The borough covers 40sq miles and is bisected by the M6 motorway. Socio-economically, there is a stark geographic divide between the more deprived west and less deprived east.



### Life Expectancy



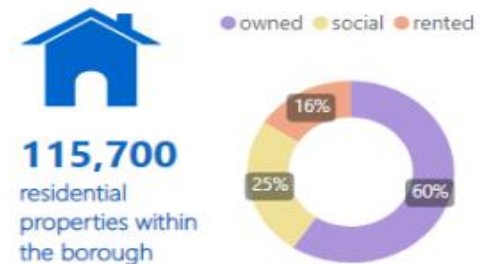
### Deprivation



### Education



### Housing



### Employment



**Job Density**  
0.66 jobs to every 3 working aged people (0.66)





# Meet the team - WMBC Public Health

Uma Viswanathan  
Consultant in Public Health  
Health Protection / Healthcare

- Sexual health
- NHS advice and support
- Health Protection
- Immunisations
- Screening (s7a)
- Oral health
- Air quality
- Quality improvement leadership for the directorate
- Coordination & development of quality improvement training and support for team/continuous improvement
- Quality and Safety representative
- Joint Commissioning Committee
- Health protection Forum
- Integrated Care Partnership forums
- PH educational / clinical supervision

Cynthia Folarin  
Consultant in Public Health  
Mental Wellbeing/ Inequalities

- Mental Wellbeing
- Suicide prevention
- Inequalities leadership, strategy and making improvements to the fundamentals of wellbeing
- NHS advice and support
- Inequalities leadership within NHS
- Community safety interface
- Drugs and alcohol
- Leadership on inclusion health and vulnerable groups i.e. Homelessness, learning disability, traveller communities
- Oversight of PH professional training and development
- Adults safeguarding lead
- Commissioning committee representative
- Community Safety Partnership
- PH educational / clinical supervision

Stephen Gunther  
Director – Public Health, Business Insight  
and Policy & Strategy

Paul Nelson/ Paulette Myers  
Consultant in Public Health  
Young people/Inequalities

- Wellbeing service contract
- Child Death Overview - Panel and driving improvements
- Behaviour Change (e.g. Brief Intervention, Health Chats, MECC, smoking/tobacco, healthy eating, physical Activity)
- Healthy start vitamins
- 0-19 services
- NHS Health checks
- Social Prescribing
- Healthy schools
- Healthy workplaces / Health and work
- Children's safeguarding lead
- Performance and Finance representative
- Children's partnership
- PH educational / clinical supervision

# WMBC – Public Health - Priorities for 2022/23

- Implementation of the Mental health and wellbeing strategy
- Implementation of the Health Protection strategy
- Embedding inequalities in the Council's business
- Redesign of sexual health services, 0-19 services and drug and alcohol services and creation of a wellbeing service (physical, mental, social, financial)

## Useful links

- our Walsall Insight website – <https://www.walsallintelligence.org.uk/>
- Overview - <https://www.walsallintelligence.org.uk/overview/>
- Population - <https://www.walsallintelligence.org.uk/home/demographics/population/>
- Deprivation - <https://www.walsallintelligence.org.uk/home/demographics/deprivation/>
- Walsall's JSNA - <https://www.walsallintelligence.org.uk/jsna/>
- Topic specific needs assessments - [https://www.walsallintelligence.org.uk/home/publications/?cat=needs-assessment&per\\_page=1000](https://www.walsallintelligence.org.uk/home/publications/?cat=needs-assessment&per_page=1000)

## Useful links continued...

- DPH annual reports - [https://www.walsallintelligence.org.uk/home/publications/?cat=director-of-public-health&per\\_page=1000](https://www.walsallintelligence.org.uk/home/publications/?cat=director-of-public-health&per_page=1000)
- Ward profiles - <https://www.walsallintelligence.org.uk/home/profiles/ward-profiles/>
- Our Council Plan [Our Council Plan 2022-2025 \(walsall.gov.uk\)](https://www.walsall.gov.uk/our-council-plan)
- [Integrated Care System \(ICS\)](#)
- [NHS Integrated Care Board \(ICB\)](#)
- [Integrated Care Partnership \(ICP\)](#)