

Palfrey and Pleck Local Neighbourhood Partnership
29th June 2005

Partnership plan and Task Groups

1. Brief Summary of Report

The purpose of this report is to inform the LNP of the additions made to the draft Partnership Plan and the general progress of the various task groups.

2. Matters arising from the last LNP meeting

At the last meeting, an issue was raised with regards to the naming of smaller neighbourhoods within the chart on page 8 of the partnership plan (Summary of Key area Statistics). The Shared Intelligence Partnership Resource Team has confirmed that names within this chart can be changed.

3. Work to date

The LNP has undertaken various task group meetings since the last main LNP meeting:

• **Health Task group:**

All LNP members were invited to 2 events hosted by the PCT on 17th May and 25th May.

Information that was provided included some useful information in regards to current health problems within the area. (see enclosed)

• **All Task Group meeting:**

An all Task group meeting was held on 13th June. The primary focus of this session was for each task group to objectively evaluate the content of the plan, and clarify the issues raised within the section of the plan. The task groups also began to look at prioritising the plan.

• **Funding Workshop**

In addition to normal task groups a further meeting took place on 15th June to allocate the £22,000 resource. (see agenda item 10)

4. Recommendations

- LNP to endorse changes and additions to partnership plan
 - Alter the 'Neighbourhoods' within the Key Area Statistic's chart (page 8 of partnership plan)
 - For LNP members to continue in attendance at the workshop meetings
 - For individual LNP members to encourage wider participation from community members within the task groups
-

Contact officer:

Narinder Singh Chumber

Neighbourhood Partnership Officer

Tel: 01922 653508 Mob: 07921 872234

chumbern@walsall.gov.uk

Local Neighbourhood Partnership **Health Workshop**

Demographic and Health profile of Palfrey & Pleck LNP

Public Health Department
Walsall tPCT

Demographic and Health Profile of Palfrey & Pleck LNP

Health Headlines

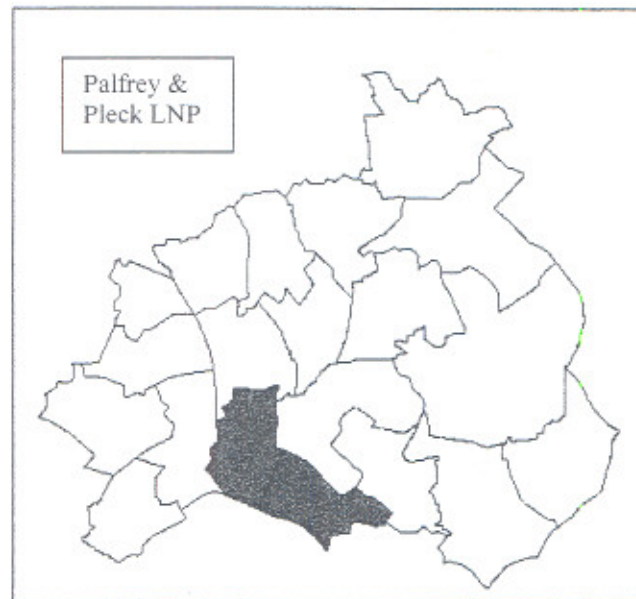
Palfrey and Pleck have a relatively young population. The key health issues in the LNP include:

- Perinatal mortality in Pleck was 11.9 in 2001-2003 compared to a Walsall rate of 8.8
- Breast screening uptake in Pleck and Palfrey is amongst the lowest in the borough
- Cervical screening uptake ranges from 65% to 89% across the LNP
- Obesity amongst adults in Palfrey & Pleck is slightly more prevalent than in the rest of Walsall (16.1% against 15%).

Background:

- The total population of Palfrey & Pleck is 28,493 .
- Over 8,400 of these residents are under 18 years of age (29.6%) and roughly 3,800 are over 64 years of age (13.4%). Walsall has fewer young people (24.4%) and more older people (16.2%) than the LNP.
- There are more than 10,300 households in the LNP area, 13.1% of which are lone parent households. This compares with 10.7% across Walsall.
- The proportion of residents in Palfrey & Pleck from BME groups is 44.1% being significantly higher than the Walsall average of 13.6%. There are currently over 50 asylum seekers in the LNP (all in Pleck) living in LA accommodation making up 14.4% of the Walsall total.
- 47.6% of the LNP adults (aged 15-74) have left school with no qualifications, compared to 42.7% across Walsall. Nationally there are 29.1% of adults with no qualifications.
- Unemployment is higher than the borough average (5.6% against 4.4%) and 29% of the LNP's Smaller Areas are in the country's top 10% most deprived.

Walsall Borough Ward Map



Source: Walsall teaching PCT

Public Health Issues:

- The life expectancy (1996-2000) at birth for those living in Palfrey & Pleck was 73 years for men and 79 years for women. This is marginally lower than the Walsall average of 74.4 and 79.5 respectively. Life Expectancy in Walsall men is 1 ½ years less than for the whole of England and Wales.
- Infant Mortality Rates of 2.2 per 1,000 live births over the 3 years 2001-2003 is well below the Walsall figure (5.7) and England and Wales figure (5.4). Perinatal mortality (deaths under 7 days and stillbirths) was 9.5 for the same period compared to 8.8 over Walsall as a whole.
- The rate of deaths (all ages, all causes) per 1,000 population in Palfrey & Pleck LNP is 9.3, being slightly lower than Walsall overall whose rate is 10.0.
- There are approximately 21% of the LNP residents suffering from a long-term condition. This is marginally higher than the Walsall average of 20% and England and Wales average of 18%.

Lifestyle and Choosing Health

Earlier this year the Department of Health released the White Paper "*Choosing Health*" aimed at addressing health issues across the country. Six main issues were identified as requiring special attention which have a major contribution to poor health. These are:

Obesity:

- Obesity amongst adults in Palfrey & Pleck is slightly more prevalent than in the rest of Walsall (16.1% against 15%).
- Across the LNP, men and women are similarly obese (15.2 and 16.9 respectively) however in Palfrey, women are over twice as likely to be obese, and in Pleck it is men who are nearly twice as likely to be obese.

Smoking:

- Over 5,000 adults (18.2%) in the LNP are smokers. This is markedly lower than the borough prevalence of 26%.
- There were 12.7% of women smoking at time of birth of their child in Palfrey & Pleck. This compares favourably to the Walsall figure of 20.2%.

Exercise & Nutrition:

- At least 7% of adults in Palfrey & Pleck do none or very little exercise, being less 'active' than the rest of Walsall (5%).
- Approximately 25% of the adults in the LNP eat 5 portions of fruit and vegetable a day. The national proportion for this measure of dietary intake is approximately 14% however doubts have been cast over the accuracy of local data.

Drinking:

- 71.6% of adults drink alcohol in Palfrey & Pleck, being significantly lower than the rest of Walsall (84%). Levels of excess drinking are also lower than borough averages in both men and women.

Sexual Health:

- Teenage Conceptions rates in the LNP are slightly below Walsall averages (58.3 compared to 63.4 per 1,000 female population aged 15-17). The rate in England and Wales was 42.8.

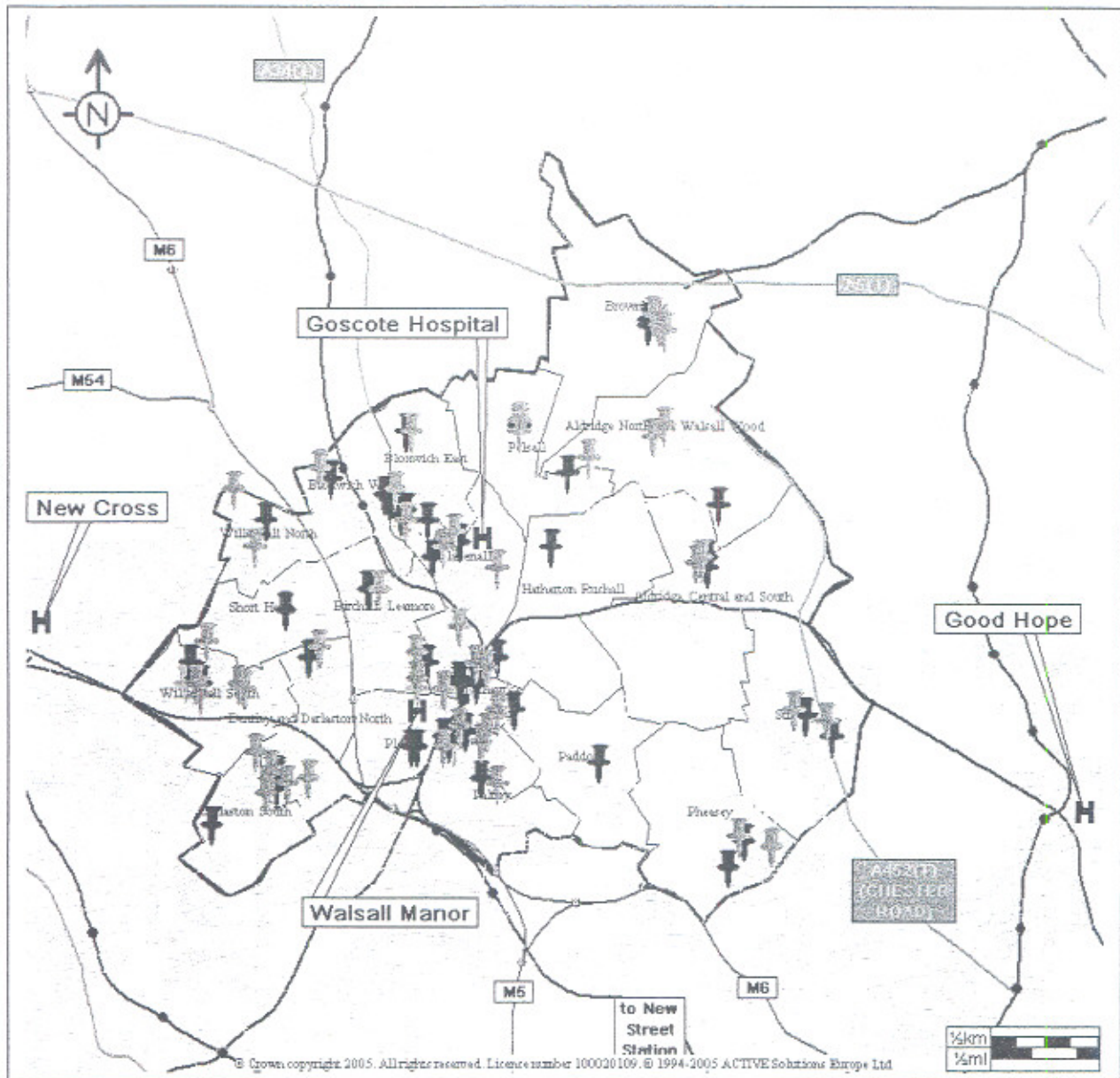
Mental Health:

- No detailed information is available at this time however, recent estimates are that 1 in 4 people across the borough suffer from some sort of mental health condition.

Other Key Public Health Issues:

- Breastfeeding levels (at transfer to Health Visitor) were 47.4%. This is markedly higher than the current Walsall average of 39.4%.
- Crude mortality rates (per 100,000 population) from Cancer in the LNP (2000-2002) were 210.6. This is considerably lower than the overall Walsall rate of 260.6.
- Mortality rates from Coronary Heart Disease in the LNP were 2.5 per 1,000 population. This is lower than the Walsall average of 2.6.
- Breast screening uptake from the mobile unit in Palfrey was 62% at the last screening round, and 64% at the Manor Hospital. These are amongst the lowest in the borough. The target is to achieve a 70%+ uptake rate.
- Cervical screening in the LNP area (from GP's based in the LNP) ranges from 65% to 89% and the target is 80%. The Walsall average is 81.8%.
- Childhood immunisation rates vary little across Walsall and average uptake (by 2 years of age) for MMR is 82% with Diphtheria, Pertussis, Tetanus, Polio, Hib and Meningitis C all having uptake ranging from 94% to 99% across the borough.
- Flu Vaccination in Walsall in over 65s has met the 70% target however in Palfrey and Pleck this ranges from 46% to 79%

Map of Walsall Services and major road and rail networks.



Key	Description
H	Hospital Site
+	Practice Location
+	Pharmacy Location
+	Breast Screening Unit

Health Services in the Area:

- At present there are 5 General Practices in Palfrey & Pleck accommodating 11 GPs.
- There is 1 General Dental Practice in the LNP and also 1 Community Dental Service.
- The Manor Hospital is located in Pleck and serves the whole Borough population as well as the immediate surrounding area.
- There are 8 pharmacies currently in the LNP.
- There are also 2 Breast Screening Units in the locality in addition to 5 Link Workers.

Population and Public Health Snapshot Indicators: Summary Table

	Palfrey and Pleck	Walsall	England & Wales
Demography:			
Total Population	28493	253499	52 mill
Male	13818 (48.5%)	123189 (48.6%)	49%
Female	14675 (51.5%)	130310 (51.4%)	51%
Under 16s Population	7516 (26.4%)	55009 (21.7%)	20.2%
Over 64s Population	3819 (13.4%)	41067 (16.2%)	16%
Population change (1991-2001) +/-		-3.10%	
Number Households	10351	101333	
Proportion of Lone Parent Households	13.1%	10.7%	
Population density (residents per sq km)	3941	116	
Ethnicity:			
Proportion of BME population	44.1%	13.6%	8.7%
Travellers/Asylum Seekers (in LA Accommodation as at 22.11.04)	56	388	
Education:			
No qualifications	47.6%	42.7%	29.1%
Degree or higher	10.6%	11.1%	19.8%
Deprivation and Unemployment:			
Super Output Areas (SOAs) in top 10 most deprived in UK, 2004	5	29	
Proportion of SOA within Borough/Ward in top 10% most deprived	29%	17%	10%
Unemployment (2001)	5.6%	4.4%	3.4%
Lifestyle and Choosing Health:			
Proportion of adults drinking alcohol (2001)	71.6%	84%	
Proportion of adults eating 5-a-day (2001)	25.6%	24%	
Proportion of adults drinking to excess (2001)			
Men	13.6%	20%	
Women	6.3%	12%	
Proportion of adults taking little or no exercise (2001)	7.0%	5.5%	
Proportion of adults who are obese (2001)	16.1%	15%	
Proportion of adults who smoke (2001)	18.2%	19%	
Teenage Conceptions (1998-2000) as rate per 1,000	58.3	63.4	
Other Key Public Health Issues:			
Life Expectancy (1996-2000)			
Men	73	74.4 years	76
Women	79	79.5 years	80.5
Infant Mortality	2.2	5.7	5.3
Perinatal Mortality	9.5	8.8	8
Long term conditions (2001)	20.8%	20%	18
Smoking in Pregnancy (2002)	12.7%	20.2%	
Breastfeeding (2003)	47.4%	39.4%	
Mortality from cancer rate/100,000 pop (2000-2002)	210.6	260.6	263.6 (1995-97)
Mortality from CHD rate/ 1000 pop (2000-2002)	2.5	2.6	
Breast Screening uptake	63%	70%	70%
Cervical Screening uptake	65-89%	81.80%	80%
Flu Vaccination uptake	46-79%	70%	70%
	94-99% (MMR at 82%)		

PALFREY AND PLECK LOCAL NEIGHBOURHOOD PARTNERSHIP

COVER PAGE

Size - A4 Booklet

- 1) To be based on 'Vision Document' Style Cover including photographs from individual local areas
- 2) Photographs to be inserted within matrix with blanked off areas in-between.
- 3) Text above matrix to clearly show: (LNP area) Local Neighbourhood Partnership
- 4) Text below matrix to clearly show: Local Neighbourhood Plan 2004 - 05
- 5) Full logo's for Walsall MBC & Walsall Borough Strategic Partnership to go underneath at bottom of page.

LOCAL NEIGHBOURHOOD PLAN 2005 -06

Contents

Walsall Council - A Vision for Walsall in 2008

About Walsall Borough Strategic Partnership

Section one - Introduction

Section Two – Area Profile

Section Three – Areas for Action

Section Four – Making it Happen

Appendix

Walsall Council – A Vision for Walsall in 2008

Walsall Council has agreed its vision and priorities from now until 2008. This has been achieved through local consultation about what sort of place Walsall could be in the future and what part the council should play in leading the changes ahead.

To support this vision the council has identified 10 priorities against which specific actions will be delivered. From now until 2008 the council will tackle important issues linked to these 10 priorities to ensure that the vision for Walsall is achieved.

Vision 2008: In 2008, Walsall will have an established reputation as an ambitious “can-do” place where a civic, economic and cultural renaissance has been made possible.

In 2008, Walsall people are proud of their heritage, proud of what their borough has become and excited about future opportunities.

In 2008 Walsall will be a learning borough that promotes the value of learning and achievement, in our schools and colleges in the home, in the community and at work.

In 2008 Walsall will have a reputation as a clean, green and safe borough.

By 2008, real improvement will be evident in the health of our citizens, and the needs of people who care for others will be acknowledged and their work valued.

In 2008 local people will see themselves as residents of the borough as a whole. Local districts and their centres will still have their strong sense of identity. Walsall Town Centre will be an exciting and vibrant place for culture and business – acting as the economic powerhouse of the borough.

In 2008 Walsall Council will be recognised as a listening organisation, which effectively represents, but also tackles, the concerns of local people. The council will provide strong and responsive civic leadership, supporting local communities with the resources and tools to provide local solutions to local problems. Walsall will enjoy high levels of civic involvement in neighbourhood partnerships and in a capable, vibrant voluntary sector.

By 2008 Walsall will have played a full role in transforming the Black Country into a highly successful sub-regional economy.

Priority Areas:

- Ensure a Clean and Green borough
- Make it easier to get around
- Ensure all people are safe and secure
- Make our schools great
- Make Walsall a healthy and caring place
- Encourage everyone to feel proud of Walsall MBC
- Make it easier to access local services
- Strengthen the local economy
- Listen to what people want
- Transform Walsall into an excellent local authority.

About Walsall Borough Strategic Partnership

“Walsall will be a prosperous, inclusive and competitive Borough in which its diverse communities feel involved, safer, healthier, and can take pride in its future.”

Walsall Borough Strategic Partnership (WBSP) is Borough-wide and brings together the major service delivery agencies (Police, Health, Local Authority), and the business, community and voluntary sectors, to tackle issues of deprivation within the Borough's most deprived areas.

The WBSP comprises six Theme Groups:

- Improving Community Safety and Crime Reduction
- Improving Health, Well-Being and Social Care
- Regenerating the Economy
- Sustaining a Better Place to Live and Work
- Raising Educational Standards through Lifelong Learning
- Community Engagement (and Equalities)

The Partnership is now commissioning against four strategic objectives:

- Supporting a thriving Economic Community, through supporting existing businesses, encouraging new business and raising the skills base of people in Walsall
- Environment and Improving the Image of Walsall, through raising aspirations, improving liveability, and regenerating the fabric of neighbourhoods
- Opportunities for Children, through a variety of formal and informal activities
- Community Safety and Reclaiming Neighbourhoods and addressing the impact of substance misuse, through education and awareness raising, particularly on young people through diversionary and health promotion activities

With four integral Themes:

- Skills Escalation
- Raising Aspirations
- Community Cohesion
- Improving the Image of Walsall

The WBSP works closely with Walsall Community Empowerment Network to ensure that communities of interest and geography are fully involved with the Partnership and the decisions it makes. This also includes the Local Neighbourhood Partnerships.

Together these strategic priorities set the backdrop against which Local Neighbourhood Partnerships operate and set the scene for improvements identified within this neighbourhood plan.

SECTION ONE: INTRODUCTION

Foreword by Partnership Chair – Cllr Yasin

What is a Local Neighbourhood Partnership?

A Local Neighbourhood Partnership or LNP is a meeting at a more local level, between the council, partner agencies and representatives of the business, voluntary and community sectors where local issues are discussed, problems identified and solutions proposed to resolve them. A further key role of the LNP is to engage and consult with all local people to help identify these key neighbourhood issues and to seek views on how best to tackle them, and in doing so, produce a local neighbourhood plan.

The make-up of a local neighbourhood partnership includes all ward councillors for the area, four council appointed partners including the police, Primary Care Trust and primary and secondary school representatives, and up to ten locally appointed partners from the business, voluntary and community sectors. This however, does not stop members of the public becoming involved, as meetings, which are held every three months, are open, with everyone free to attend. Each meeting of the LNP does have an agenda, with key topics for discussion, but also allows time for members of the public to raise questions and to have their say on local issues.

What can the Local Neighbourhood Partnership do?

The partnerships are there to:

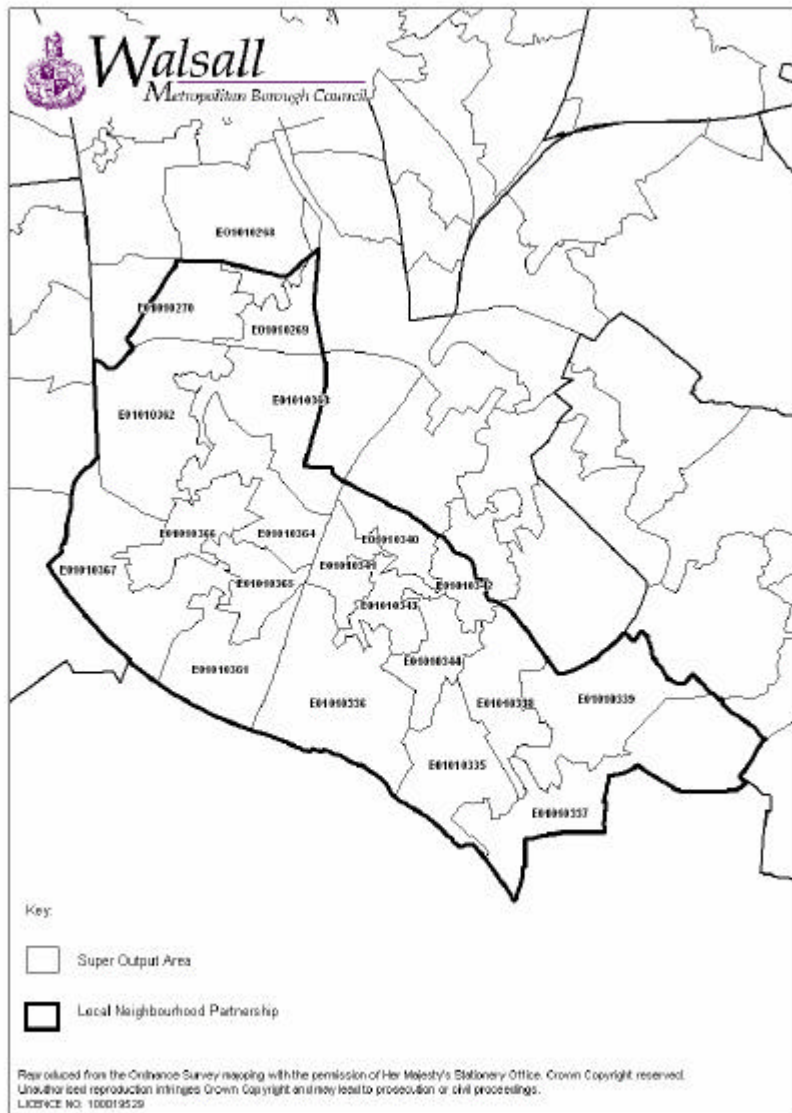
- Consult and involve local residents, businesses and other service providers in agreeing a plan for their area.
- Produce a partnership plan which will help to deliver the 2008 Vision of the Council and inform the Community Strategy for the borough.
- Manage and monitor the implementation of their plan and publish their achievements each year.
- Increase the involvement of local citizens in improving the environment in which they live, work or study.

The LNPs will play a significant role in involving local individuals and groups in deciding how, when and where services are delivered in their area. They will do this by:

- Helping local people to get involved in deciding what needs to change in their area through the development of the partnership plan.
- Looking at ways of improving partnership working with other public service providers.
- Giving a view on local services provided by the Council or other public bodies.
- Using their partnership plan to inform and influence the service and business planning process of the Council and other service providers.
- Considering petitions and other collective representations relating to their area and linking these to their partnership plan.

SECTION TWO: AREA PROFILE – Strategic Intelligence Unit

Map of the Area



Facts About the Area

This Section presents a range of statistics on the LNP; it places this LNP in context of the Walsall borough wherever possible.

Population structure: This LNP area has above the borough average for people aged up to 29 years old and well above average numbers of young people aged between 16 and 29 years of age. Some 56% of residents are of white origin, with 38% of the area's population being of Indian, Pakistani or Bangladeshi origin. It has below the borough average of owner occupiers but above the borough average of lone parents and households with a limiting long term illness. It has a high rate turnover rate of households moving (second only to the LNP which includes the town centre area) which would suggest it does not have a settled community around which to build.

- Environment:** In a study completed in 2001, residents in this LNP area were asked “Are you satisfied with this area as a place to live?” while 70% answered “Yes” – there was only one other LNP area which were less satisfied with their living environment. In fact 45% of people when asked thought it had got worse as a place to live.
- Economy:** The area has below the borough average for economically active people and, as a result, a high level of unemployed people. It is the second highest of all LNP areas regarding numbers of people claiming Jobseekers Allowance benefit. In terms of people claiming a range of benefits (such as Disability Living Allowance, Income Support and Council Tax benefit) it is above the borough average in all categories.
- Crime:** The area has seen a fall in the numbers of reported crime over the last 4 years. Total crime per 1,000 population has fallen from 141 in 2000/01 to 104 in 03/04. This declining trend now makes this LNP area the third “worst” in terms of reported crime with both St Matthews & Birchills Leamore (the town centre LNP) and Blakenall & Bloxwich having higher levels of reported crime. The very slight increase in reported disorder incidences from 111 in 2002/03 to 112 in 03/04 and the fall in youth offenders from 3.1% to 2.4% (% of young people offending based on numbers of 10-17 year olds in the locality) all indicate that, whilst crime remains a concern the area shows signs of improvement.

Statistics relating to specific neighbourhoods within the LNP area

Government departments have developed a way of mapping “poverty or deprivation indicators” across the UK. They use a variety of statistical sources to arrive at what is known as the “Index of Multiple Deprivation”. This is essentially a way to “rank” all the areas of England to identify those areas in most of need of assistance to raise income levels, improve health and education in the area etc.

A recent improvement is that the Government has now developed a way to consider smaller local neighbourhoods within wider geographic wards; they are useful to highlight distinct “pockets” of deprivation or poverty.

The Government has called these small neighbourhoods “super output areas” or SOAs for short. There are some 32,482 of these “SOAs” across the country; each has been given a numerical code. The Council has applied these codes to the appropriate LNP area.

The map above details these codes; the chart below applies the codes to local neighbourhoods. The LNP has allocated identifying names to these neighbourhoods, based on local knowledge, to more easily identify distinct areas within the LNP which may be in need of “special” help.

Understanding the chart below

The chart details the ward names within the LNP; it applies the SOAs (small neighbourhoods) within the Ward and gives a more local neighbourhood name to the numerical code given by the Council.

The final two columns give the “Rank of Index of Multiple Deprivation”, essentially the lower the rank – the more deprived the area. Thus “North West of Pleck” with a score of 1,017, is considered to be the most deprived neighbourhood, overall, in this LNP area and therefore in need of most help.

The final column states the “IMD Most Deprived Percentage”. There are 32,482 SOAs (small neighbourhoods) nationally; the Council has ranked neighbourhoods largely by those in the top 25%, 50% and 75% for ease of reading. So:

Rank: 1 – 8,120 those falling within the top 25% (e.g. “most deprived”)
 Rank: 8,121 – 16,241 those between 25% to 50% (mid range)
 Rank: 16,242 – 24,362 those between 50% to 75% (above mid range)
 Rank: 24,363 – 32,482 those between 75% to 100% (those “least deprived”)

To further explain the above ranking, neighbourhoods “scoring below 3248” – would be in the top 10% most deprived nationally, those “scoring below 6,496” would be in the top 20% most deprived nationally and so on; we use these smaller percentages later in this section.

Summary of Key Area Statistic's

Ward	Super Output Area (SOA) Numerical Code	“Neighbourhood within the LNP”	Rank of Index of Multiple Deprivation	IMD Most Deprived Percentage
Pleck	E01010364	N/W of Pleck	1017	5
Palfrey	E01010340	Caldmore	1254	5
Pleck	E01010365	New Mills	1831	10
Pleck	E01010366	Paget's Bridge	2036	10
Pleck	E01010269	Birchills	2193	10
Palfrey	E01010335	East Bescot	3376	15
Palfrey	E01010343	Palfrey	3562	15
Pleck	E01010367	Pleck Park and James Bridge	3924	15
Palfrey	E01010342	East Palfrey	4178	15
Pleck	E01010268	Reedwood	4352	15
Pleck	E01010363	Manor Hospital Area	4433	15
Palfrey	E01010341	Caldmore/Pleck	4454	15
Pleck	E01010362	Junction 10	5339	20
Palfrey	E01010344	Palfrey Park	5972	20
Palfrey	E01010338	Fullbrook	6442	20
Pleck	E01010270	Northern Tip of LNP	8217	50
Pleck	E01010361	South East of Palfrey	9795	50
Palfrey	E01010336	West Bescot	9869	50
Palfrey	E01010337	The Delves	14997	50
Palfrey	E01010339	N/E of the Delves	17535	75

There are therefore 20 small neighbourhoods in this LNP area. Breaking statistics into smaller neighbourhoods provides the LNP with a far better grasp of specific areas within the locality which may be in need of help.

This LNP area has 15 small neighbourhoods in the top 20% of deprived areas nationally. There are three further neighbourhoods (noted above as “the Northern tip of the LNP, South East Palfrey and West Bescot) which “score” considerably less than the areas of Delves at the foot of the Table. Hence this would suggest that, across the wider LNP area, deprivation is comparatively widespread.

Considering specific elements of the overall “neighbourhood ranking”

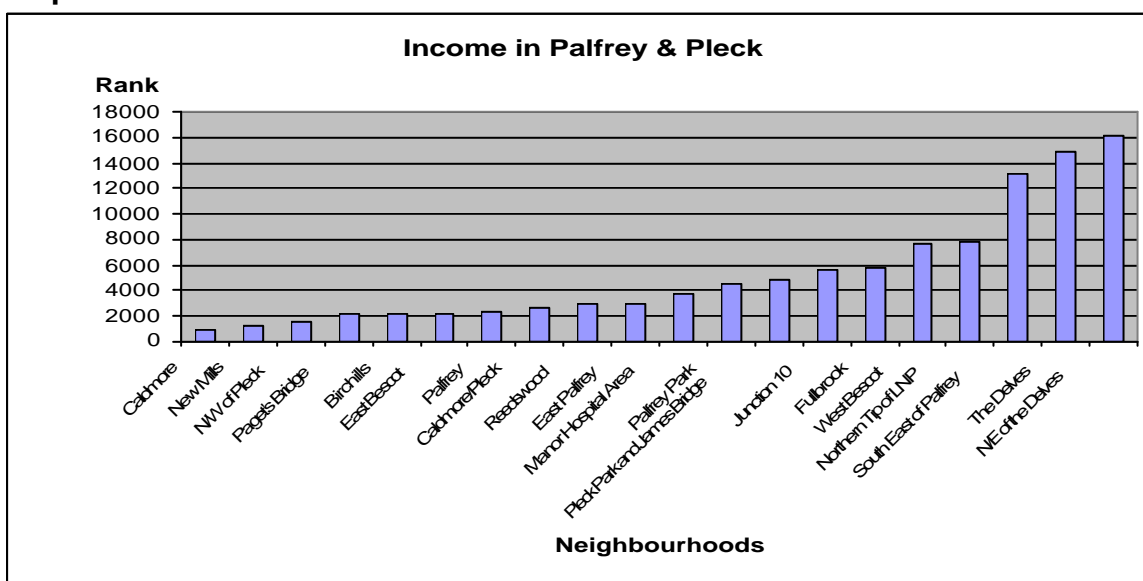
The above chart brings together a series of “scores” from various aspects of living in an area to arrive at the overall rank. These aspects include:

- Crime (the incidence of recorded crime for four major crime themes: burglary, theft, criminal damage and violence)
- Education & Skills (the numbers of skills and qualifications held by local people, both young people and adults)
- Employment (numbers of unemployed people in the area)
- Health (those people whose quality of life is impaired by poor health),
- Housing & Services (lack of services based on geographical barriers or access to suitable housing)
- Income (average wage levels, various economic indicators)
- Living Environment (considers the indoors living environment (measures the quality of available housing) and the outdoors environment)

The following charts present a variety of the above “aspects” which may be of interest to the LNP.

Income

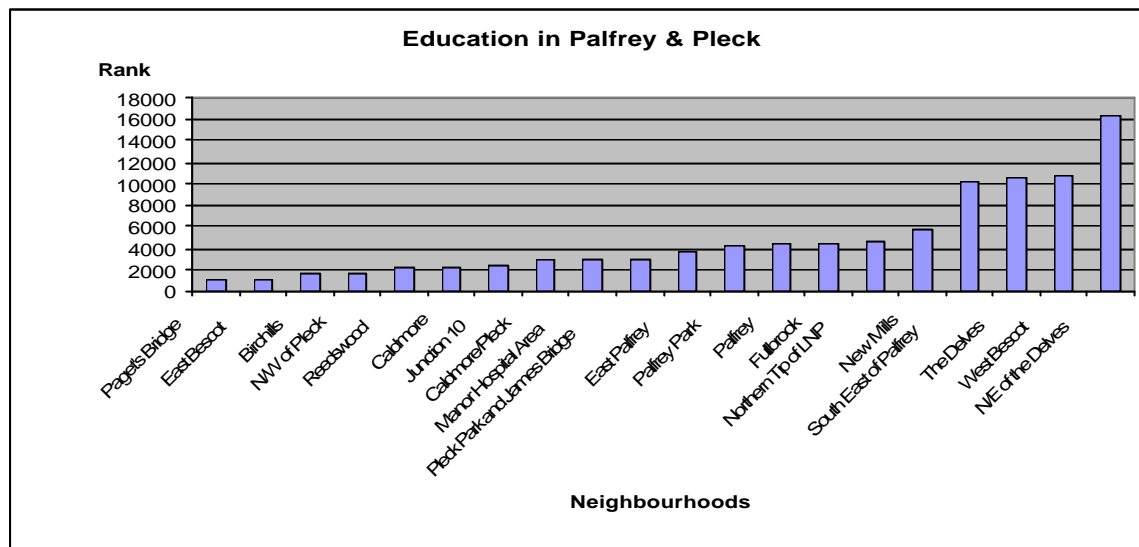
Graph 1



The above graph confirms the extent of the deprivation across the LNP area, Caldmore is the most deprived small neighbourhood with a “score” of 907 which places it in the top 3% of most deprived neighbourhoods in England. Indeed the 3 neighbourhoods to the left of the graph all score below 1,624 hence they are in the top most 5% deprived neighbourhoods in England. In fact reading the graph from left to right confirms that all neighbourhoods in this LNP (other than South East of Palfrey, Delves and North East of Delves at the extreme right of the graph) score below 8,120, hence they are within the top 25%, most deprived, of all English neighbourhoods.

Education

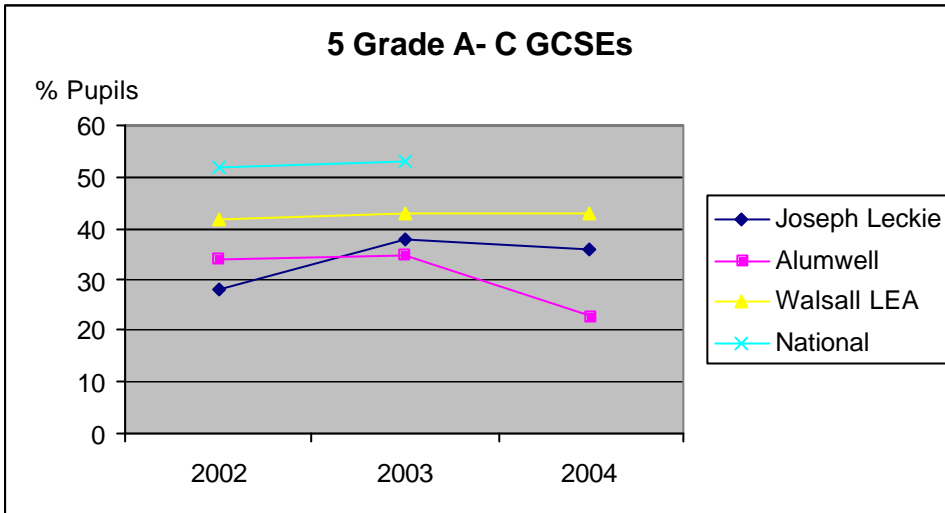
Graph 2



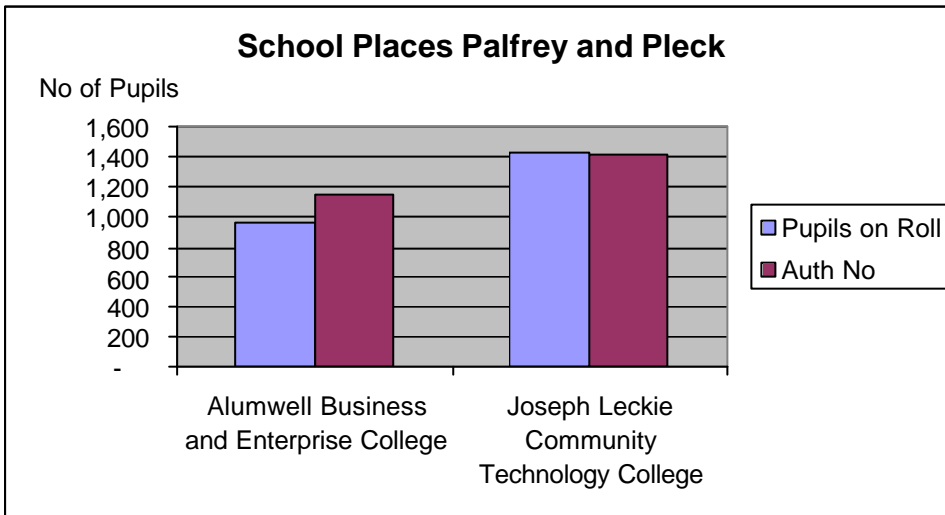
The scale of the left axis indicates that all neighbourhoods (other than North East of Delves) score below 11,370 (therefore top 35% of deprived neighbourhoods in England). In terms of this aspect, both Paget’s Bridge and East Bescot have a very low score, both being in the top 5% of all English neighbourhoods, with a further 8 neighbourhoods (reading across from Birchills to Pleck Park and James Bridge) being in the top 10%.

Considering the achievement of pupils in the secondary schools in the area, Graph 3 highlights that both schools are below the Borough average and more recently have been falling in terms of the percentage of pupils achieving 5 Grades A to C.

Graph 3



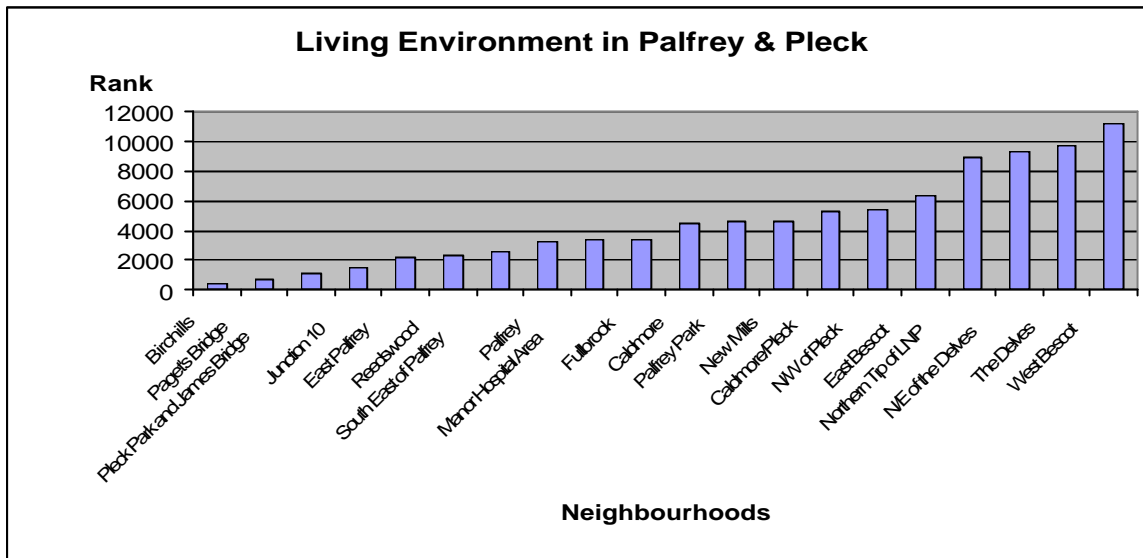
Graph 4



Graph 4 above indicates the take up of places in the two schools, as can be seen Joseph Leckie is slightly oversubscribed and Alumwell considerably undersubscribed.

Housing and Environment

Graph 5

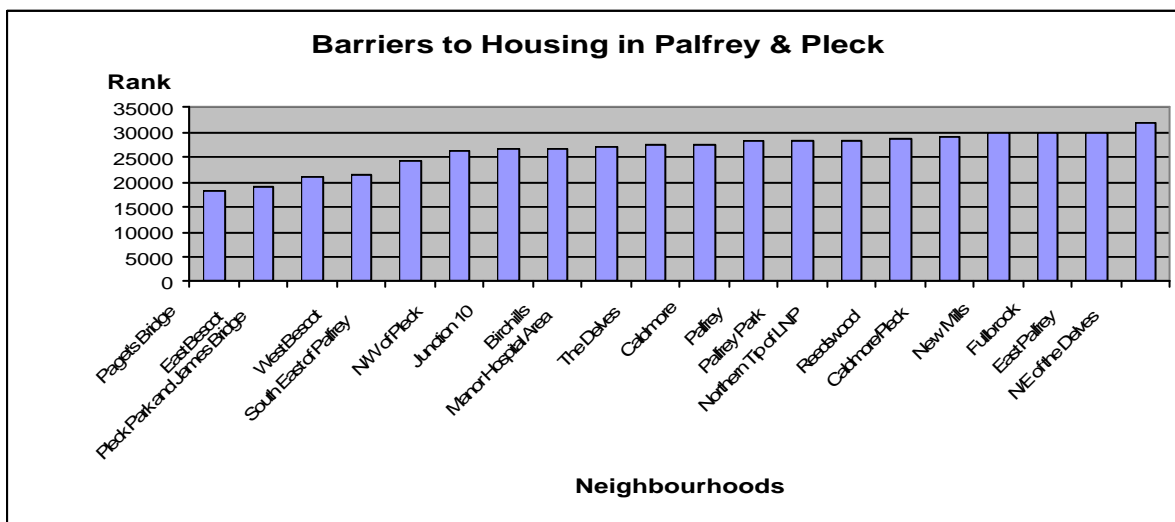


This aspect considers the indoors living environment in terms of measuring the quality of available housing and the outdoors environment. The above chart graphically illustrates the extent of the deprivation in specific neighbourhoods within the LNP area. Both Birchills and Pagets Bridge (to the extreme left) score 435 and 758 respectively, hence they are in the top 3% of all English neighbourhoods. There are 13 neighbourhoods in total (reading from Birchills to New Mills) which are within the top 15% of all English neighbourhoods regarding this aspect.

However it is useful to consider a further element of the “living environment”. The following chart titled “Barriers to Housing” is an indication of the amount of housing stock available in the area. It is to be noted that Pagets Bridge (most deprived) scores 18,191, well above the 50% level of deprived neighbourhoods at 16,241. Thus all neighbourhoods score highly.

This would suggest that there is sufficient housing in the area, but the quality of the housing stock may need attention.

Graph 6



SECTION THREE: AREAS FOR ACTION

THEME: Ensure a clean and green area

Objective: To improve the environment of the local area

Action	Target & Timescale	Champion	Outcome	Progress so far	Themed Strategic Link
Involving local residents groups may give a degree of control over who takes up tenancies in the LNP area					
Improving communication could be achieved by establishing a 'Palfrey and Pleck' One Stop Shop, where services/facilities could be coordinated centrally.		WMBC		Putting the citizen First Project	
Developing an agreement between tenant and landlord could be beneficial. The Wolverhampton Safer Estates Agreement was mentioned as perhaps a model to be investigated					
Note: The Ward Walk in October notes concerns over the condition of derelict flats in Bescott Street		Council officials to discuss with WHG			

<p><u>Transport issues:</u> Wallows Lane HGV parking: LNP members to discuss with residents paying to have a gate erected on the road Applying parking restrictions to HGVs</p>		<p>LNP members</p> <p>Planning & Transportation</p>			
<p><u>Fly tipping</u> Rutter Street Car Park Land opposite Palfrey Junior School</p>		<p>Street Pride Street Pride</p>			
<p><u>Environmental Grot Spots</u> The Ward Walk details both commercial and residential properties where action may be required.</p>		<p>Street Pride or commence enforcement action</p> <p>Public Protection</p>		<p><u>Note:</u> Leaflet drop to be undertaken to residents in Caldmore cautioning against feeding pigeons Place Check to be rolled out.</p>	
<p>Raise awareness of cultural/religious events to encourage greater integration and engender respect.`</p>					
<p>Trees</p> <ul style="list-style-type: none"> - causing problems with pathways. Difficult for elderly, disabled and people with buggies/prams - Poor lighting due to trees 					

Woodwards Close Open Space - cleaning and landscaping and develop into a community space					
Woodwards Close/ Woodwards Road - Youth Anti Social Behaviour - Improve physical environment, improve image and create pride - Fencing					
Reservoir Street Shops - Gates needed opposite Alumwell junior school - Access by cars					
Hooker Road Allotments - Raised Bed facilities					
M6 Pollution - Buffers/Barriers i.e. trees					
Street Scene: Clean up; Provision of bigger and better bins; fly- tipping & Illegal dumping- to the rear of Shops Bescot Street/Sun Street in Palfrey					

Sub Action Plan relating to Transforming your Space (TYS) projects

A report was presented to the LNP, by officers of the Council, at its meeting of 4th October. The following “Transforming your Space” schemes were recommended to be noted in the Local Plan for the LNP area. TYS schemes will play a part in improving the local environment as indicated below.

Action	Target & Timescale	Champion	Outcome	Progress so far	Themed Strategic Link
<p><u>Primley Avenue Open Space</u> The project will provide a new play area in a more visible location, the site of the existing play area will be transformed into a multi-use games area, a new skate park behind the existing play area and a resurfaced pathway.</p>	<p>Work to be completed by July 2005.</p>	<p>TYS</p>			
<p><u>Palfrey Park</u> The scheme will improve the existing sports and youth facilities in the Park. Proposals include replacement of 2 existing tennis courts to provide a multiuse court and a marked out pitch for basketball and 5 a-side football, fencing work, re-alignment of the footpath (paid for by the Heritage Lottery Fund) and a youth shelter.</p>	<p>Work to be completed in December 2004.</p>	<p>TYS</p>			

<p><u>Pleck Park</u> One of the existing tennis courts will be converted into a multi use games area, the existing grassed football pitch will be refurbished and a youth shelter will be installed.</p>	Work to be completed in December 2004.	TYS		Completed Vandalism has taken place	
<p><u>Silverdale Park</u> The existing play area will be refurbished to include new equipment, fencing and safety surfacing.</p>	Work to be completed in December 2004.	TYS		Completed	

THEME: Ensure all people are safe and secure

Objective: To reduce levels of crime and fear of crime in the local area

This LNP held a workshop which focussed on crime in the local area. The issues of concern have been grouped into the following areas:

- Anti social behaviour. The group identified specific locations in the LNP area which are the focus of anti social behaviour and patterns of behaviour which need to be addressed. Anti social behaviour includes skateboarding in inappropriate areas, cycling in the shopping area, playing football at night, general vandalism. There are also incidences of racial harassment around the Wolverhampton/Bentley Drive area and Joseph Leckie Community Technology College.
- Drugs and Prostitution: These have both been serious issues in the area for several years having been noted on previous Community Plans. Both are particularly prevalent in specific areas such as Hillary Street, the Library in Old Pleck Road, and Scarborough Close where kerb crawling is a regular occurrence. There is a view that prostitution has been displaced from other areas which has made it worse in this LNP area. Drug dealing and prostitution has led to a climate of fear on local streets.

Action	Target & Timescale	Champion	Outcome	Progress so far	Themed Strategic Link
Locations which “attract” anti social behaviour: Reservoir Street Silverdale Park Junction Street Play area Woodward Road/ Alumwell Comprehensive School. M6 Motorway/Walsall Canal/Darlaston Rd Junc. There is a need for more community policing and the Alumwell Crime Wardens to have a greater presence. Alumwell School need		Ward Councillors/ residents/ Police			

assistance to implement both exclusion orders and a rehabilitation programme to assist children back into mainstream education					
Greater enforcement needs to take place with residents having confidence that reporting of criminal activity will lead to action and possible conviction					
Racial Harassment – Wolverhampton/Bentley Drive area Near Joseph Leckie Community Technology College				Report by a Neighbourhood Renewal Advisor, outlining key recommendations	Refer to LNP Crime and Community Safety Action Plan
Drugs - Dealing/ Taking in King Street Flats -					
Prostitution - Narrow Lane - Wellington Street - Darlaston Road				Report by a Neighbourhood Renewal Advisor, outlining key recommendations . Research being	Refer to LNP Crime and Community Safety Action Plan

				undertaken by Rosie Campbell on behalf of the Joseph Rowntree Foundation	
Lighting <ul style="list-style-type: none"> - Look at locations of some lighting being replaced too close to trees - Scarborough Road 		Ameys Elizabeth Thomas			
Car Crime <ul style="list-style-type: none"> - break ins - youth from Birchills have been involved in the past 					
Dispersal Orders; Community Policing <ul style="list-style-type: none"> - Curfews 				Order has been lifted in Alumwell	
Wardens (Crime/Street) – presence and location				Presentation by Safer Walsall Borough Partnership at the LNP meeting on 29 th June 2005	

Exclusion of children from Park adjacent to Alumwell school and after school activities				Councillor Anson has negotiated with the head teacher for access to park near school	
Fear of Crime - Alley gating in both Palfrey and Pleck				Report by a Neighbourhood Renewal Advisor, outlining key recommendations	Refer to LNP Crime and Community Action Plan
Road Taxing - Some vehicles without tax discs; possible role for wardens, police and DVLA				DVLA letters appear to be having an impact	
Policing / Community Support Officers/ Wardens - Local contact rather than ringing Lloyd House - Stop and Search Tactics - look at legislation				Identified Awareness through the Training and Development Plan	

Themes: Listen to what local people want;
Encourage everyone to feel proud of the area

Objective:

Action	Target & Timescale	Champion	Outcome	Progress so far	Themed Strategic Link
Delves Experience					
Safer Estates Agreement (Wolverhampton Model)		WHG/ Walsall MBC			
Partnership between tenants and Housing Providers Vetting of Tenants to prevent transfer of 'challenging' tenants within the borough		WHG/ Walsall MBC			
Void Properties: identify scale of problem - up to 5 in Flaxham Street boarded up		WHG/ Walsall MBC			
PR and Public Awareness/ communication; increasing profile as local importance <ul style="list-style-type: none"> - Manor Hospital – linked to local jobs - Bescot Stadium: image and usage - University 		WMBC Press Office/ LNP Communications Officer			

Healthy Living Centre					
Good Infrastructure – shops, whereby people want to shop					
Traffic and Transport <ul style="list-style-type: none"> - Traffic Congestion – Ida Road (hospital) - Illegal Parking - Speed Enforcement - Public Involvement and Consultation in Ring Road Development 					
Economy <ul style="list-style-type: none"> - Attainment of Young People - Focus on ‘disruptive’ children; provide NVQs in carpentry and brickwork - Local Learning Provision - Tailored Training - Training Aspirations between gender/religion etc - Training to become carers - Insight into Jobs - Skills Base - Jobs Available to all 		Birmingham Foundation Groundwork Black Country Connexions			

<ul style="list-style-type: none"> sections of community - Being aware of what schemes run & where - Children's Centre's 	Phase 1: March 2006 Phase 2: 2006- 2008	Michael Hiscox			Children Centre Programme
Prostitution <ul style="list-style-type: none"> - Climate of Fear - Displacement of prostitutes - Environmental Issues - Reporting vs Action - Kerb Crawling - ASB: Alleyways/houses 		Joseph Rowntree Foundation study by Rosie Campbell		Link to Ensure a safer Ensure all people are safe and secure	
Identity, Cohesion and Respect <ul style="list-style-type: none"> - Integration of children into School 				Link to Ensure a safer Ensure all people are safe and secure	
<ul style="list-style-type: none"> - Awareness of Cultural/ Religious issues/events - Celebration of Cohesion/ Diversity - Refrain from Isolation 					
Drugs and Crime (See Crime Section)					
LNP linking in with Young People and Schools					

Theme: Health, Education and Services

Objective:

Action	Target & Timescale	Champion	Outcome	Progress so far	Themed Strategic Link
GP appointment system <ul style="list-style-type: none"> - Length of waiting time for appointments – some patients see their GP the same day, others wait a week - Use of other medical staff (nurses) to see patients 		HAZ/ tPCT			South HAZ Steering group
Prescribing Prescriptions without seeing patients					
Provision of 'out-of-hours' GP service outside the WALDOC service due to accessibility issues		tPCT			
Housing <ul style="list-style-type: none"> - Dampness - Void Properties: identify scale of problem 					
Pollution <ul style="list-style-type: none"> - Junction 10 Junction 9 		See Environment Section			
Facilities for Young People <ul style="list-style-type: none"> - to improve health - Lack of provision 					

for 10-17 and 0-10 year olds					
Health Centre for the Delves area with several GPs and other medical care available					

Theme: Young People

Objective:

Action	Target & Timescale	Champion	Outcome	Progress so far	Themed Strategic Link
Develop play area on field next to Joseph Leckie School - Under 10s					mailto:rainsfordandrew@walsall.gov.uk
Hire of Sports facilities (field and swimming) at Joesph Leckie School					
Internet Café in Delves					
Awareness of Youth Congress, Youth Parliament and Youth Opinions Unite Multi-cultural involvement					
Develop Allotment facilities for young people in Lord Street and Alexandra Road for young people interested in gardening					
Facilities for Young People					

<ul style="list-style-type: none"> - to improve health - Teenage Pregnancies 					
Community Centre <ul style="list-style-type: none"> - Alumwell - Pleck 					
Affordable facilities <ul style="list-style-type: none"> - Families with multiple children, cannot afford to pay for unit costs per day for all children to use - Affordable sports facilities in Alumwell 					
School Buildings <ul style="list-style-type: none"> - update and modernise buildings/ facilities 					
Attainment <ul style="list-style-type: none"> - general skills - reading and writing levels 					
Broadway Playing Fields <ul style="list-style-type: none"> - Sports activities 					

SECTION FOUR: MAKING IT HAPPEN

Summary of Planned Consultation Events

How local people will be involved

Local people and groups can be involved in many different ways in their LNP:

- Attending the quarterly LNP meetings.
- Becoming a member of one or all of the LNP task groups.
- Becoming a member of the community forum.
- Attending consultation events organised by the LNP.
- Publicising the work of the LNP in your community.
- Encouraging people and groups you know to attend LNP meetings and events.

LNPs are particularly keen to involve and make contact with young people and groups in your area who don't traditionally take part in partnerships such as this.

If you would like to find out more about how you can get involved, then please contact Narinder Singh Chumber, Neighbourhood Partnerships Officer on 01922 653508 or email on chumbern@walsall.gov.uk

Review of the Plan

Each plan upon completion will be presented to Walsall council, it's partners and local communities to outline what actions have been agreed, and what the plan contains. In this first instance, the neighbourhood plan will be in effect until the end of March 2006, but thereafter will be reviewed on an annual basis. In this way, the partnership will ensure that any actions that have been suggested or identified as part of the neighbourhood plan will indeed be acted upon, making it accountable to the whole of the local community. Action on developing and reviewing the plan will not stop once the initial plan is completed, but will in effect be an on-going process as issues are resolved and new ones are identified.

Partnership Meeting Dates – Constitutional Services

APPENDIX

List of Partners - Constitutional Services

Useful Contacts – (To be added)

Appendix

Appendix 1

Palfrey and Pleck Crime Workshop

Issue	Location
Racial Harassment	<ul style="list-style-type: none"> ➤ Wolverhampton Road/Bentley Drive ➤ Joseph Leckie Comprehensive School
Drugs and Prostitution	<ul style="list-style-type: none"> ➤ Hillary Street
Football playing at night	<ul style="list-style-type: none"> ➤ Kingsley Street
Prostitution and Vandalism	<ul style="list-style-type: none"> ➤ By Library, nr Old Pleck Road
Skateboarding	<ul style="list-style-type: none"> ➤ By Elderly Residents Houses in Woodward's Road
Cycling in shopping area	<ul style="list-style-type: none"> ➤ Reservoir Street
Stolen cars abandoned on ex football pitch	<ul style="list-style-type: none"> ➤ Nr Alumwell Comprehensive School
Prostitutes operating in area around garages. Police informed – no action has been taken	<ul style="list-style-type: none"> ➤ Scarborough Close
Lack of lighting and anti-social behaviour (drug use, drinking etc.) in alleyway. Alleyway leads to a burnt out play area with broken glass and no lighting.	<ul style="list-style-type: none"> ➤ M6 Motorway/Walsall Canal/Darlaston Road Junction
Main car crime and anti-social behaviour hotspot. No long-term action available to combat this.	<ul style="list-style-type: none"> ➤ Woodward's Road/Alumwell Comprehensive School
Two houses have been burnt out	<ul style="list-style-type: none"> ➤ Flaxhall Street
Dispersal Order and no Community Policing	<ul style="list-style-type: none"> ➤ Moat Road/Pleck Road
Young people want to know what they can do to lift the curfew	<ul style="list-style-type: none"> ➤ Wolverhampton Road/York Avenue
Alumwell Crime Wardens are ineffective. Little visible presence.	<ul style="list-style-type: none"> ➤ Alumwell Road
The Alumwell School is ready to exclude children, but have no active part to rehabilitate into mainstream school.	<ul style="list-style-type: none"> ➤ Nr Alumwell Primary/Nursery School

Appendix 2

Palfrey and Pleck Listening and Image Themed Workshop
16th Novemer, 2004

Palfrey and Pleck Mapping

Exercise 1 What do we want to achieve and how do we want our area to look

- Involvement of Young People
- A Clean, Green, Safe and Healthy local environment – linking this comment to open spaces in the area
- Drug Free Zone
- Reduction of Crime and Violence
- Reducing Traffic congestion, increasing access and parking availability

Issues specific to image of the area

- Litter
- Prostitution
- Signage – identify places etc
- Becoming and staying a vibrant and inviting area
- Safe and sound (night and day)
 - CCTV
 - Lighting
 - Traffic calming
 - Visible police presence
 - Neighbourhood wardens

Issues around listening

- Children being seen and heard (involvement and engagement of young people)
- Community groups
- Local businesses
- Knowing service providers are *Listening and Responding*

Specific Issues

- Housing – Partnerships between tenants and landlords/ housing agencies
 - specifically around issues around undesirable tenants. The Wolverhampton Safer Estates Agreement was mentioned
 - Tenants should have more accountability to the area that they live in
 - Local people having some control of who takes up tenancies in their area, involving local residents groups
- Formation of a 'Palfrey and Pleck' One stop shop, whereby all could be coordinated centrally, thus improving communication

Group discussions concluded that Palfrey & Pleck LNP area should be a:

Working Together to improve the area for local people, understanding our communities may have different needs; encouraging people to communicate their different needs; not afraid to challenge and willing to be held accountable. Also including:-

- Cool
- Relaxed
- Communities *supporting* each other
 - Feel good factor
 - Caring

- Do young people feel the same?

The group were asked to identify various issues, highlighting positive issues, areas in the need of improvement and outside information affecting the LNP area

Outside factors influencing the area	
Factor	
Junction 10	
Town Wharf Jobs	
Town Centre Redevelopment – Jobs	
Council's response to Home Office consultation regarding Prostitution	
Health	
Pleck Bridge	

Positive Aspects within the Palfrey and Pleck LNP area	
Factor	
Delves Green Common	
Schools in the area	
Bescot Railway Station	
Improvements to Palfrey Park	
Bescot Stadium	
Retail Park	
Palfrey Park	
Palfrey CA	
Manor Hospital	

Areas of Concern	
Issues	Location
M5 / M6 Pollution	J9 M6 junction
Heavy flow of traffic especially around J9	Junction 9
Fly tipping	Bescot Road/ Darlaston Road
Parking on Yellow lines	Bescot Road/ Darlaston Road
Better communication between Delves & Palfrey	
Enforcement of new speed limit	Broadway
Traffic Speed	Broadway
Parking Congestion/ Problems	West Bromwich/ Broadway West Windmill

	Street/ Bath Road
Traffic Congestion	Near Manor Hospital/ Pleck Road
Litter	Near Manor Hospital/ Pleck Road
Drug Dealing	Near Manor Hospital/ Pleck Road
Drug related Crime & Violence	Near Manor Hospital/ Pleck Road
Prostitution	Caldmore Road Windmill Street/ Bath Road
Housing	Windmill Street/ Bath Road
Education	Windmill Street/ Bath Road
Poor Employment Prospects	Windmill Street/ Bath Road
Health Care	Windmill Street/ Bath Road
Youth Issues	Windmill Street/ Bath Road
Traffic	Near Palfrey Park
Litter	Near Palfrey Park
Youth intimidation- especially at night	Wallow Lane/ Broadway
Caldmore Housing	Milton Street Area
Parking on Road	Milton Street Area
Litter & Traffic	Milton Street Area
Housing	Milton Street Area
Milton Street Shopping Area	Milton Street Area
Parking on Double yellow lines- difficult for other vehicles to get through	Milton Street Area

During the evening 9 themes were identified under the Image heading. The table below states the themes identified and the rank of order. Each individual was given 3 dots and asked to place their dots next to the issues which they thought were their priorities for the area. They were allowed to place all 3 dots on a single issue or on a different number of issues.

Theme	No. of votes	Rank
Drugs & Crime	4	2
Identity/ Cohesion/ Respect	-	
Prostitution	3	3
Economy	1	5
Traffic & Transport	9	1
Friendly, Inviting & Cool	1	5
Landmarks & Gateways into Borough	-	
Housing	-	
Environment	3	3

Attendees were asked whether they wished to form a Listening and Image Task group. The following people have expressed an interest:-

Name	Organisation
Mark Pulford	Local Appointed Partner
MH Manik Miah	Bangladeshi Cultural Society
Shirley Spencer	Retail Draper
MD Lulu Miah	Walsall Bangladeshi Network
Allah Ditta	Local Appointed Partner
Kirpal Kaliroy	Local Appointed Partner