

Blakenall and Bloxwich Local Neighbourhood Partnership - 17th July 2006

Reselection Locally Appointed Partners

Portfolio: Local Partnerships

Service Area: Neighbourhood Services

Wards: Blakenall, Bloxwich East and Bloxwich West

1. Purpose of the Report

This report seeks to inform the Local Neighbourhood Partnership on the recent changes to the Locally Appointed Partner (LAP) selection process.

2. Recommendations

The LNP is asked to:

- (a) Note the changes in the selection process
- (b) Identify a mechanism to decide which Locally Appointed Partners are to be reselected in 2007-2008
- (c) Identify which Locally Appointed Partners are to be reselected in 2007-2008, based on the mechanism agreed by the LNP
- (d) Note the findings of the Equalities Impact Assessment on LNP Membership

3. Background

Walsall Borough Strategic Partnership (WBSP) agreed the following recommendations from the LNP Chairs Forum:

- That the existing Locally Appointed Partners continue as representatives of the Local Neighbourhood Partnerships until October 2006 in order for a revised selection process to be introduced.
- That one third of the existing Locally Appointed Partners be reselected at the October/November Local Neighbourhood Partnership meetings. The second third should remain in office until April 2007 and the final third until April 2008. This is reflected in the revised LNP terms of Reference. Any Locally Appointed Partners who will be asked to stand down can re-apply to continue to be a representative on the Local Neighbourhood Partnership.

- That the nomination process runs from August to September 2006
- That the 2006 LNP selection panels will consist of:
 - 2 Ward Members
 - A representative from the Walsall Borough Strategic Partnership Nominated Partners
 - A representative from the remaining Local Partners
 - An independent adviser from the Community Empowerment Partnership Board

A letter has been sent out to all Locally Appointed Partners informing them of the above and asking them if they wish to continue as Locally Appointed Partner for a further one or two years.

The Selection Process will start in August, when a targeted recruitment campaign will run looking to engage these communities where gaps have been identified.

4. Reselection

The decision to reselect one third of the Locally Appointed Partners each year means the Local Neighbourhood Partnership needs to consider a mechanism to decide who will be reselected in each of the first three years. (2006-2007-2008)

Blakenall and Bloxwich Neighbourhood Partnership currently has 4 vacancies. This means that all current Locally Appointed Partners will be able to continue in their duties as Local Neighbourhood Partner until 2007/2008. The LNP is asked to agree a mechanism to determine who will be asked to stand down in 2007 and in 2008.

Suggested mechanisms to determine which Locally Appointed Partners will be asked to stand down for reselection in 2007, include:

- Request volunteers to step down from their duties as Locally Appointed Partners.
- Attendance rate at LNP meetings of Locally Appointed Partners over the previous year.
- The amount of groups Locally Appointed Partners are accountable to.
- Draw a name from the hat.

Once a mechanism is agreed by the LNP, the LNP is asked to use this mechanism to help decide which Locally Appointed Partners will be asked to step down in 2007 and 2008.

6. Equality Impact Assessment

An Equality Impact Assessment has been carried out on the Membership of all Local Neighbourhood Partnerships, considering how strongly the LNP membership represents the community. Attached are the findings of the Equalities Impact Assessment for the Blakenall and Bloxwich Neighbourhood Partnership Area. The selection panel will be asked to take the Equalities Impact Assessment in consideration when they are selecting the new Locally Appointed Partners.

Local Neighbourhood Partnership members are asked to promote the benefits of being a member of the Local Neighbourhood Partnership to representatives of the communities currently not reflected in the membership of the LNP.

Contact Officer

Imke Goalby

Neighbourhood Partnerships Manager

Tel: 01922 653312 Mob: 07921872233

Email: goalbyi@walsall.gov.uk



Blakenall and Bloxwich LNP

EQUALITIES MONITORING

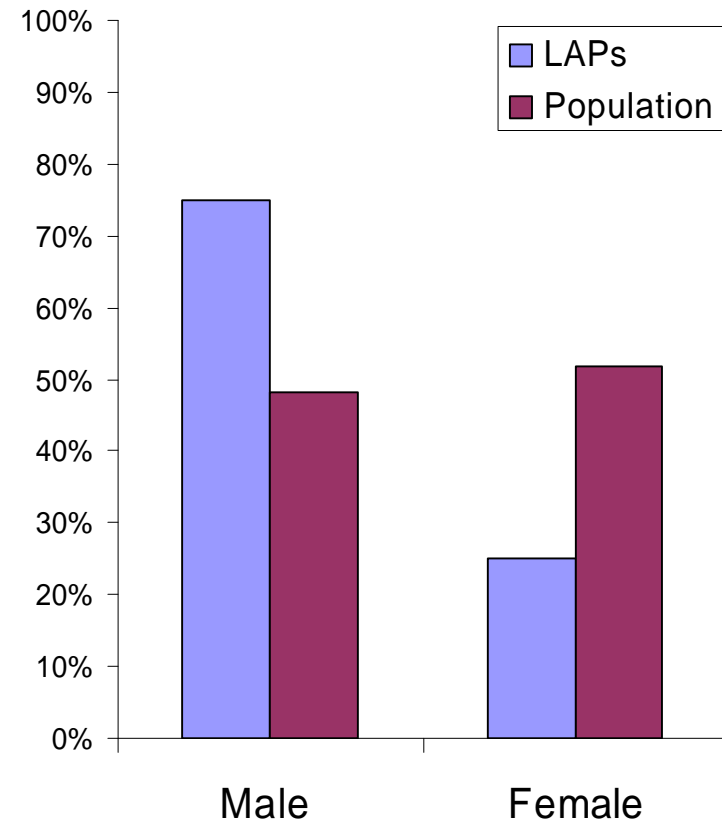
Locally Appointed Partners and the Local Population



Walsall Council

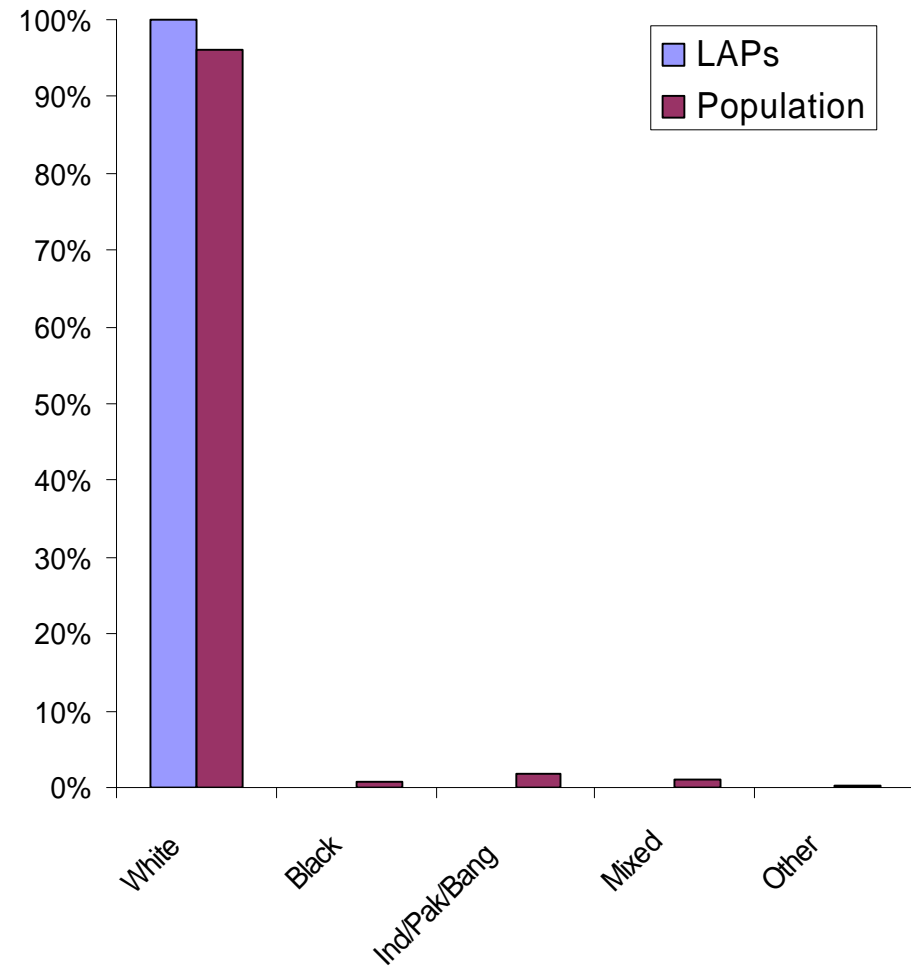
Gender

- There are significantly fewer female LAPs on the partnership.
- The LAP gender balance is a poor reflection of the population



Ethnicity

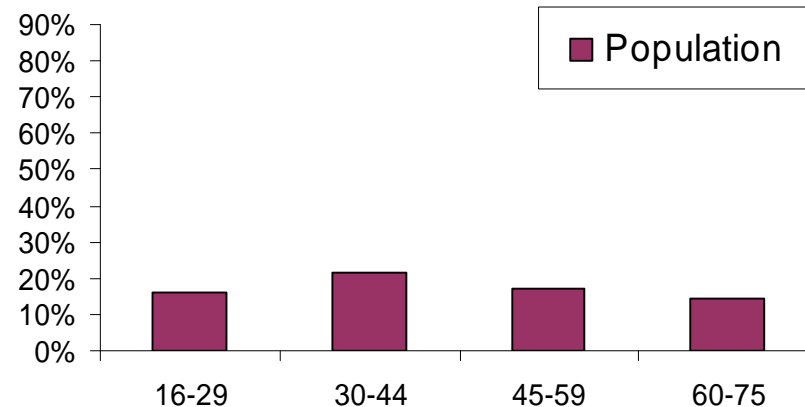
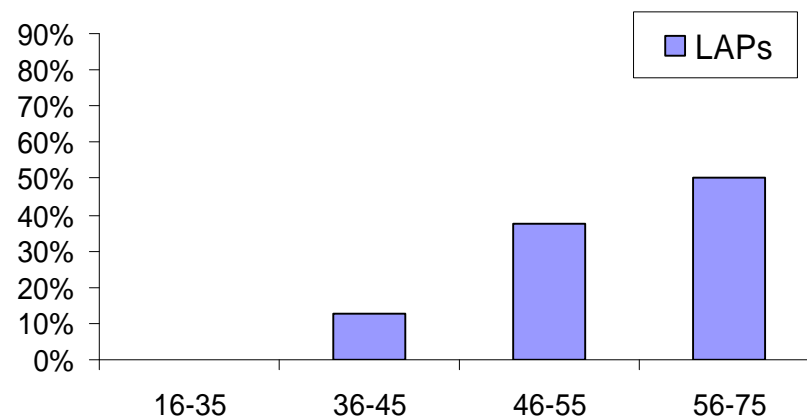
- The locally appointed partners are reflective of the community ethnicity.
- There remains a need to involve other existing ethnic groups in community consultation.



Walsall Council

Age

- The LAP age profile is an imbalanced reflection of the community age groups.
- The LAPs significantly over-represent people over the age of 45
- There is no representation of people under the age of 36



Geographical

