

# BRIEFING NOTE

TO: Craig Goodall  
DATE: 13.01.2009

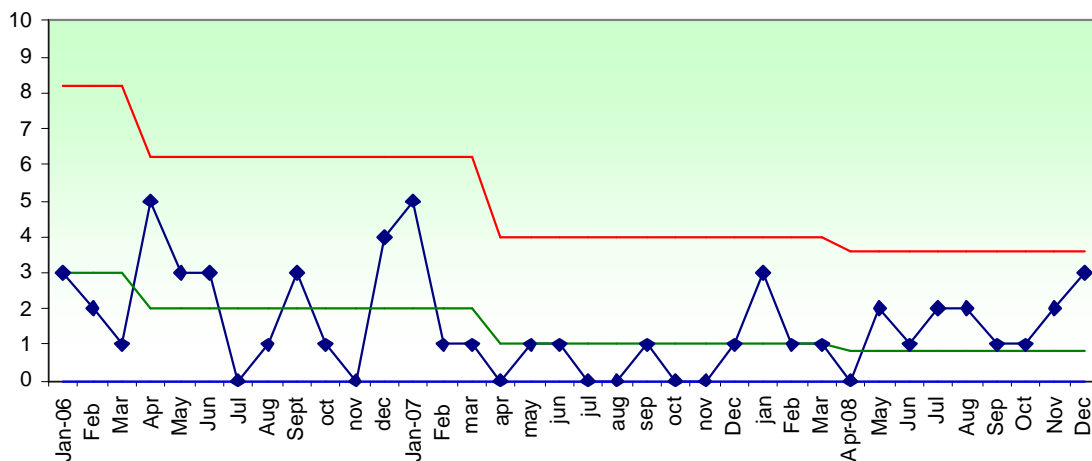
RE: MRSA bacteraemia and Clostridium difficile figures, Walsall Hospitals NHS Trust

## Purpose

This report has been written in response to a request from the Health Scrutiny Panel to provide an overview of MRSA bacteraemia and Clostridium difficile figures for Walsall Hospitals NHS Trust.

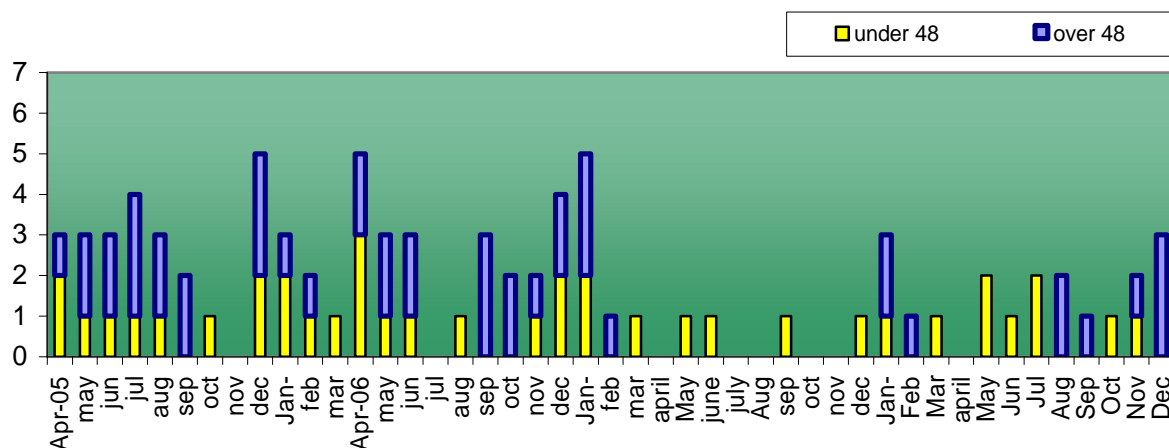
## MRSA BACTERAEMIA

*Total Number of Mandatory MRSA Bacteraemia Report from Jan 2006 – December 2008*



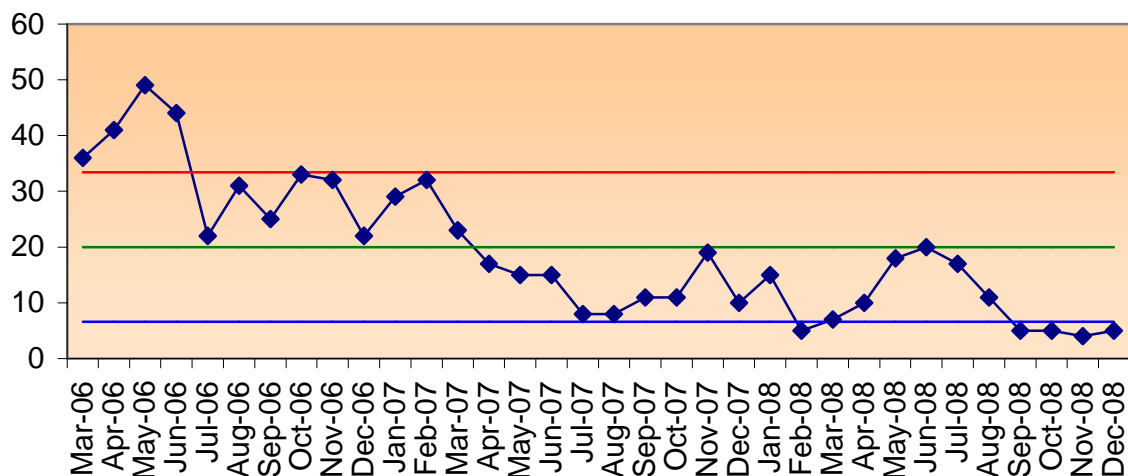
There has currently been a total of 14 MRSA bacteraemia reported for the first three quarters of 2008/9. Root Cause Analysis has been undertaken and action initiated where appropriate. The chart below illustrates that 50% of these specimens have been obtained within 48hrs of admission, indication that those bacteraemias have not been acquired within Walsall Hospitals NHS Trust.

**Comparison of Bacteraemia specimens taken pre and post 48hours of admission**



## CLOSTRIDIUM DIFFICILE ASSOCIATED DIARRHOEA

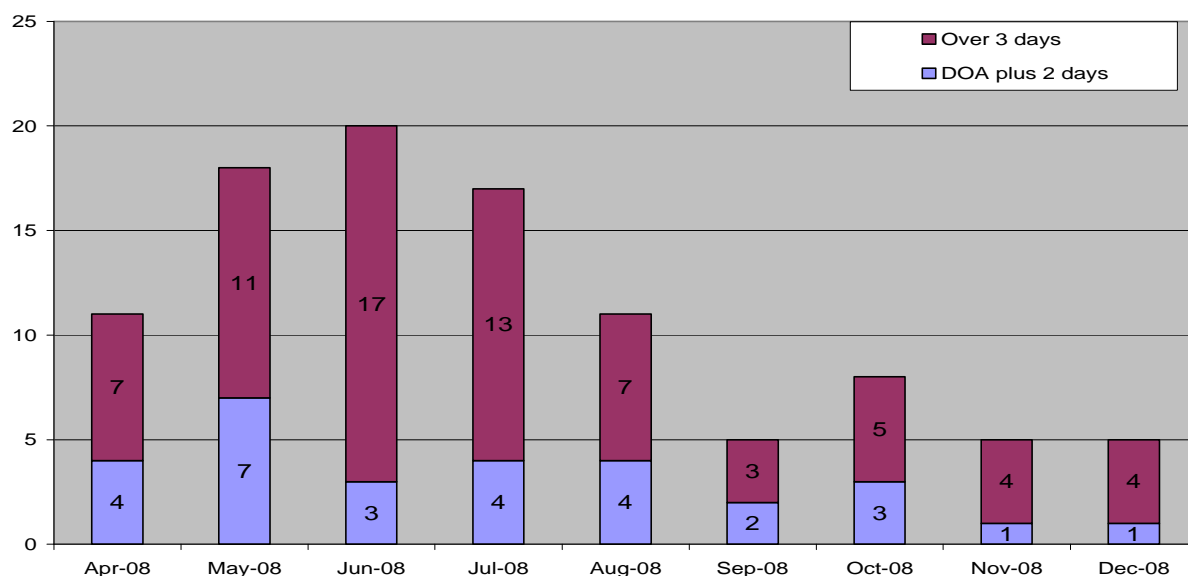
CDT cases by month (figures exclude community specimens)



Following the rise in numbers during the first and second quarters of the year, the numbers have been significantly lower in the last quarter.

We continue to undertake Root Cause Analysis on all patients but no significant issues have been identified.

### **C. difficile cases in relation to date of admission from April – December 2008**



Following clarification from the Department of Health, the criteria for identifying Health Care acquired Clostridium difficile is those patients who have a positive sample taken post day of admission plus 2 days. Our figures have been amended from the previous quarters report to reflect this.

### **Author**

Patsy Tandy

Lead Infection Control Nurse

Walsall Hospitals NHS Trust

☎ 01922 721172 ext 7323

[patsy.tandy@walsallhospitals.nhs.uk](mailto:patsy.tandy@walsallhospitals.nhs.uk)