



Council – 23 May 2005

Review of Scrutiny Activity 2004/05

Portfolio: Resources and Performance Management – Cllr O'Hare

Service Area: Corporate Performance Management

Wards: All

Summary of report

This report summarises the work of the five scrutiny and performance panels during the municipal year 2004/05.

Recommendations

- (1) To note the summary of scrutiny activity for the 2004/05 municipal year and that this will inform the further development of the Council's scrutiny function.

Signed:

Executive Director: Carole Evans

Date:

Contact officer

Helen Dudson
Service Planning Manager
☎ 3618
✉ dudsonh@walsall.gov.uk

1. Introduction

- 1.1 The following paragraphs summarise scrutiny activity and developments during 2004/05.

2. Development in Scrutiny 2004/05

- 2.1 Responsibility for the delivery and development of the scrutiny function transferred to the Corporate Performance Management service in early 2005. A small scrutiny team provides support to members in their scrutiny role.
- 2.2 In addition to the 5 scrutiny panels, scrutiny board workshops have regularly taken place. These involve the chair and vice chair from each panel meeting to share information about the work undertaken by each panel, identify possible joint working opportunities and to consider generic and development issues. This has led to the establishment of 2 cross-panel working groups, consultation with members about constitutional changes concerning scrutiny, briefings regarding the proposed revised CPA methodology and using the Beacon Index.
- 2.3 Working groups as a vehicle for conducting detailed scrutiny have again proved effective and have developed new working practices that include research, mystery shopping, site visits and questioning techniques. **Appendix 1** illustrates the structure of scrutiny for 2004/05 and how activities were organised.

3. Activity

- 3.1 **Table 1** summarises the meetings of the panels and sub-groups. **Appendix 2** shows more detail. The table includes all meetings up to and including 26 April 2005. Where a joint working group meeting has taken place, it is recorded under the lead panel.

PANEL	SCHEDULED	SPECIAL	CALL INS	SUB GROUPS	TOTAL
Community Organisation, Leisure & Culture	7	0	2	7	16
Children's Services & Lifelong Learning	6	3	0	1	10
Health & Social Care	7	0	0	14	21
Regeneration Environment, Housing & Community Safety	7	1	1	8	16
Resources & Performance	7	0	0	3	10
TOTAL	34	4	3	33	74

- 3.2 **Appendices 3-7** show the detailed activities of each panel organised into themes. The key areas of work for each panel are summarised below.

4. Scrutiny Panel Feedback

4.1 Community Organisation, Leisure and Culture

During the year the panel has considered a variety of issues from the work programme agreed at the start of the year; key issues are set out below:

- Community Association Funding.

A work group was established to discuss the transforming youth services agenda and the proposed delegation of funding and the impact on Community Associations. The group identified a funding gap and made recommendations through the budget consultation process to help fill the gap. The work of the group has, on the whole, achieved its objectives and a report will be considered at the first meeting of the panel in the 2005/6 municipal year.

- Disability Strategy Review

Members of the working group were tasked with two objectives:

1. Physical Access to Services – to identify that the Council and its borough providers are effectively responding to the law in terms of meeting DDA Legislation on Physical Access, and that the level of progress made (in terms of effective action planning) is appropriate and meaningful.
2. Disability in Employment – to ascertain why the council's performance in recruiting employees with a disability, recorded at less than 1%, and to identify what barriers or challenges potential and existing employees are faced with.

Members of the group have been involved in mystery shopper exercises, meeting with the Disabled Employee Network and have conducted site visits to a sample of public facilities. The culmination of the group's work will be a review session where all of the evidence will be collated and will result in the final report to the first meeting of the panel in 2005/6.

- Procurement Gateways.

Members were very keen to follow the procurement process from start to finish, to fully consider the procurement cycle, and review the procedure at each gateway. Members were advised that the forward plan identified that the procurement of leisure management operations is due to commence in Spring 2005. Members felt that the best way to follow the procurement cycle would be to establish a task and finish working group and to scope the review at the first meeting of the group. This work is due to start and will be in the work programme for 2005/06

- Putting the Citizen First

The panel has continued to monitor and receive information about this project. A call-in of the decision of Cabinet relating to the preferred partner resulted in a special meeting to which all scrutiny members were invited to attend. The consideration resulted in the following resolution:

Following lengthy discussion the Panel resolved that they were greatly reassured by what they had heard and as long as all assurances were honoured and the Council is covered both financially and legally they can only see a benefit for citizens at Walsall. Members also requested that consideration be given for the anti-poverty unit to be taken out of scope.

The panel's report was circulated to all panels for comment. Recommendations were forwarded to Cabinet. Monitoring of the process continues.

In addition to the agreed work programme the panel have also received information on:

- a) Parks and green spaces strategy.
- b) Emergency Planning – Operation Forest - The panel made recommendations to the portfolio holder about funding when considering the budget for 2005/6 and suggested that emergency planning be included in the member development programme event for 2005/6.
- c) Performance information – received on a quarterly basis.
- d) Libraries Review was monitored and received a very encouraging report the principles of which will underpin the creation of a service improvement plan. This will be developed in consultation with our preferred strategic partner Fujitsu and will be presented to the scrutiny panel on completion.
- e) A special meeting of the Panel was held to consider the budget and comments and recommendations were made to cabinet.

4.2 Children's services and Life Long Learning

The panel has considered a variety of issues from the work programme agreed at the start of the year. Key areas of work were:

- State of School Buildings

The panel discussed the state of school buildings and a special meeting was held 25 November 2004. The panel recommended that Cabinet consider carefully the information in the report on the condition and suitability of school buildings in Walsall. Cabinet agreed to the use of the prudential code to increase funds available to carry out high priority repairs in primary schools to remedy the backlog and for a work group to be established to continue to scrutinise the matter of school buildings.

The work group has set its remit and are currently looking at Cabinet Reports, Priority 1 schemes and solutions regarding delays in tendering process. The work group will continue into next municipal year.

- Social Inclusion agenda

Presentations and information relating to looked after children, development of *Every Child Matters* and the outcomes framework have culminated in the setting up of a work group in spring 2005. The group will start its work and continue into the next municipal year.

- Richard Report

The Richard report relates to the appointment process in schools and the panel has received information about governor training and discussed a progress report about arrangements at Walsall since the report. The panel have invited a police representative to discuss police arrangements at a future meeting.

- Tackling obesity in schools

The panel identified this as a key area in the work programme and are involved in a joint work group with the Health Panel detailed in section 4.3 of this report.

- Free school meal take uptake

A recommendation was made to Cabinet relating to the importance of registration of eligibility when it considers recommendations from the Resource and Performance Scrutiny Panel Benefits Services working group. This was taken into account by Cabinet.

- Teenage pregnancy

Councillor Martin, as lead member of the Children and Young Person Strategic Partnership Group, has played a key role in co-ordinating the work in this area and communicating between the panel and the strategic group. Members have received regular reports and detailed information about the issues in Walsall and attended a multi-agency workshop to meet service providers and users to find further evidence of the key issues and to request more information. The work will continue into next municipal year.

- Progress and attainment in schools

A presentation of the progress and attainment figures was received and it was recognised that Walsall Education Board (WEB) have an established task and finish group to consider the Progress and Attainment Report 2004. It has been identified that more work to look in depth at education issues should be programmed into the work programme for 2005/6.

- In addition, the panel has:
 - a) Received regularly monitored performance issues.
 - b) Received information about the Ofsted inspection at a special meeting.
 - c) Held a special meeting to consider the budget and made comments and recommendations to Cabinet.
 - d) Held a special meeting to consider and pass comment on the report of the Community Organisation Leisure and Culture Scrutiny and Performance panels relating to a call-in of the Putting the citizen first project - preferred bidder decision.

4.3 Health and Social Care

At its first meeting on 21 July 2004, the panel established a Sub-Committee with full delegated powers and two working groups as follows:

- a) Health Scrutiny Panel (with full delegated powers to scrutinise the health service).
 - b) Modernising Services working group.
 - c) CPA Housing Improvement Plan – joint working group with Regeneration /Environment/Housing/Community Scrutiny Panel.
- The Panel also agreed the following:
 - a) An annual work programme.
 - b) A criteria for identifying issues of scrutiny for the Panel.

- c) A criteria for identifying issues of scrutiny for its sub-committee (health scrutiny panel).
 - d) Establishment of an annual Standing Conference for Health Scrutiny held during September/October to develop a shortlist of items for scrutiny for submission to the Panel's sub-committee (health scrutiny) and also the Panel for information.
 - e) A model agenda for future meetings of the Panel.
 - f) To receive the forward plan as a standing item on all future agendas of the Panel.
- The Panel also highlighted some key issues for consideration as follows:
 - a) Improving performance
 - b) Managing the money
 - c) Modernising services - i.e. learning disability; older people; physical disability; supported housing; assessment/managing care
 - d) Working in partnership – getting the best out of our process
 - e) Getting the support structures right
 - f) Getting and keeping staff.
 - Meetings of the sub-committee and work groups
 - a. The Health Scrutiny Panel held four meetings during the year and agreed its work programme at its first meeting in November 2004. The following areas of work are being scrutinised and near completion:
 - Access to mental health services is currently being researched. Emphasis is being placed on the recommendations from a report on the review of accessibility of mental health services in Walsall from the Sainsbury Centre for mental health. The panel is currently discussing an action plan to address these recommendations.
 - Obesity – joint work group set up with Children's Scrutiny Panel. The obesity joint working group held its first meeting on 1 March 2005 and scoped its initial focus towards children's obesity. Group members are in the process of gathering information. A workshop is currently being organised to involve all the key stakeholders such as health workers, councillors, parents and teachers in order to collect all the necessary information to evaluate best practice and to prepare an action plan.
 - b. The Panel's Modernising Services Working Group held four meetings and will be undertaking a site visit to an independent living centre. At its first meeting the group agreed terms of reference and confirmed a work programme. The first area of scrutiny was confirmed as the Modernisation of Day Care provisions. The group arranged successful meetings with care providers and users with a view to establishing their needs for the future and is now in the process of completing its report on the findings for submission to the first panel meeting in 2005/6.
 - c. The Panel's CPA Housing Improvement Plan Working Group has held four meetings to date and is continuing its scrutiny of the Improvement plan.

4.4 Regeneration, Environment, Housing and Community Safety Scrutiny and Performance Panel

During the year the panel has considered a variety of issues from the work programme agreed at the start of the municipal year. Key areas of work were:

- Walsall Window Mill – Supported Workshop - Following a of this decision by the Scrutiny Panel on 20th April 2004, the panel has continued to monitor the implementation of the decision to transfer the employees from the supported workshop known as Walsall Windows to the management of Links to Work.
- Telecommunication masts - Members of the Telecommunications Working Group have been gathering information in a review of telecommunication masts and base stations, focussing on public concerns about perceived health issues, installation on or near school premises and planning policy guidance (PPG8). The review is not yet finished; however whilst carrying out research, members and officers have viewed many websites including the Local Government Association (LGA) site and reviews from other authorities to gather examples of good practice.

The working group were in agreement with the principles of the LGA's lobbying of Government, and made recommendations to the Regeneration Environment Housing and Community Safety Scrutiny & Performance Panel, supporting the LGA. When forwarded to Cabinet the recommendation was supported and requested that the final report of working group is presented to Council. The panel also researched additional guidance notes for telecommunications applications and are currently considering the way forward.

- Regeneration working group. The group has considered all issues not covered elsewhere and has agreed to concentrate on transportation issues. It is envisaged the work of this group will continue for a number of years to monitor the Local Transportation Plan and regeneration of the Borough. In addition, following discussions with the Walsall Regeneration Company it was agreed that the Chair of Walsall Regeneration Company join this group.
- West Midlands Bus strategy. The panel were invited to comment on the revised West Midlands Bus Strategy 2003-11 prior to submission to Cabinet. The Panel resolved to endorse the strategy in conjunction with the supplementary report, which highlighted the views and comments of the panel.
- Countryside and Rights of way Act 2000. Members received information relating to enquiry about progress following the Cabinet report of 11 May 2004, which gave the Council permission to pursue closure of six definitive footpaths to reduce anti social behaviour. The Panel agreed to consider progress on the six applications for closure and to invite the portfolio holder and a representative of the Ramblers Association to join the panel to raise public awareness of the CROW Act 2000. This work will be included in the work programme for 2005/6.

In addition to work programme issues the scrutiny and performance panel has:

- Regularly monitored performance issues and received performance exception presentations and information on Housing, Environment & Regeneration basket of indicators (HERbi).
- Received information and updates on Inspections and improvement plans

- Held a special meeting to consider the budget and made comments and recommendations to Cabinet
- Held a special meeting to consider and pass comment on the report of the Community Organisation Leisure and Culture Scrutiny & Performance panels relating to a call-in of the Putting the Citizen First project - preferred bidder decision.
- Recognised important role of LNPs and referred work where appropriate.
- Held a special call-in meeting relating to Neighbourhood Resource Centres, to consider:
 1. Whether the decision was taken on a report containing material inaccuracies.
 2. Lack of consultation with LNPs community or centres involved.

Panel members, officers, members who called in the decision, members of the public and Resource Centre representatives were in attendance and participated in the discussion. The Panel made recommendations to Cabinet.

4.5 Resources and Performance

This panel has undertaken a number of key strands of work and has been responsible for receiving and reviewing the CPA Improvement Plan. Other work:

- Independent Review of the Council's Welfare Benefits.

Members examined the background of the benefits and anti-poverty services, and the recommendations of an independent consultant's report commissioned by Cabinet, following a request of Social Care & Supported Housing Scrutiny Panel (year 2003/4). The Panel resolved that it supported the need for an anti-poverty strategy as this links into the Council's vision for 2008 and that it supported the continuation of the placement of the anti-poverty unit within the Council's welfare benefits structure beyond 31 March 2005. Further, they requested that the Cabinet approve on-going mainstream funding for 7 permanent staff within the anti-poverty unit, to which the Cabinet indicated that the panel's request would be an integral part of the medium term revenue budget. Funding was allocated in the 2005/6 base budget.

- Budget Decision Conference: Medium Term Financial Strategy and Draft Outlook 2005/6-2009/10.

The panel was advised on the purpose of the medium term financial strategy and use of this as a framework for delivering the council's budget. Members were given information on the national and local environmental background to the medium term financial strategy/outlook 2005/6-2009/10. From a lively discussion, the panel recommended a council tax increase of no more than 4.94% for 2005/6 and that investment bids, categorised as priority **A**, were recommended for approval by Cabinet subject to certain changes.

- Benefits Service Working Group - This group was established to:
 - a) Consider the benefit claim form with a view to recommending an improved form;

- b) Optimise customer access to the benefits service so that the public receive advice in as prompt and appropriate manner as possible;
- c) Make recommendations to ensure that customer waiting times are within acceptable limits;
- d) Consider the referral from the Children's Service and Lifelong Learning Scrutiny and Performance Panel so as to increase the number of people registered for free school meals and the possible introduction of a single claim form for housing benefit and free school meals.

The working group has to date, resolved:

- a) That, as part of the targeted campaign already underway on the take-up of free school meals, the planned reminder letter to potential claimants includes an explanation in other languages of the purpose of the letter and the importance of registering and claiming for free school meals.
- b) The reminder letter to include a question to people who do not want to claim, why they do not take-up a free school meal.
- c) That officers be requested to explore the possibility of involving local neighbourhood partnerships in the campaign to increase the take-up of free school meals.
- d) That Cabinet be requested to note that the panel supports the remaining findings of the working group in respect of the take-up of free school meals, these will be considered as part of the Council's review of the catering service.

The working group also noted and supported the introduction of the Department of Work and Pensions model claim form for housing and council tax benefit and requested that questions and information about free school meals be incorporated into this form.

- Best Value Working Group

The Working Group considered:

- a) The overall framework within which best value reviews are undertaken, completed and taken forward.
- b) The annual programme of planned best value reviews, how they are selected and prioritised within the plan.
- c) The summary of outcomes of best value reviews, recommendations, conclusions and whether these are subsequently implemented.
- d) The effectiveness of the best value review process.
- e) Improvements in the whole approach to best value reviews.
- f) Any learning points from specific best value reviews which could be used to improve the process so that the Council's services improve continuously and questioned officers and other stakeholders on the rational and allied aspects of the report and the underlying process and that this activity be undertaken with a view to ensuring the Council's approach to best value reviews is efficient and robust in making any recommendations for changes as required.

The working group has, to date, recommended that the executive:

- a) Reassesses the current best value review programme and confirm those of the areas that remain critical to the improvement plan of the council.
- b) Revise the corporate criteria for deciding on best value reviews before the publication of the next best value performance plan.
- c) Evaluate the crime & disorder best value cross cutting review to extract any learning for Walsall MBC.

The recommendations were endorsed by Cabinet and a further report requested.

5. Support of Council's vision

A short appraisal of the work of the scrutiny panels' in the delivery of the council's vision is set out below.

5.1 Ensure a clean and green borough

Regeneration Panel has considered reports and presentations about recycling, fly tipping, disposal of bulky items and waste management and asked for further information about performance.

5.2 Make it easier for people to get around

The regeneration work group is scoping a model to link jobs to people, taking in information about the Bus Strategy, the Local Transportation Plan and discussion around gateways, people movement in the town centre and park and ride.

5.3 Ensure all people are safe and secure

Regeneration has received a best value review of Crime and Disorder and has received a presentation of the Crime and Drugs strategy. The Panel recommended that LNPs receive this strategy for information and comment.

5.4 Make our schools great

A recommendation to Cabinet resulted in prudential borrowing of £5m to carry out "priority 1" repairs in schools. A school building working group was set up.

5.5 Make Walsall a healthy and caring place

Children's services looking at teenage pregnancy and obesity with a multi agency approach. Other work with partners includes the Health Scrutiny Panel, Access to Mental Health Services and Modernising Day Care services.

5.6 Encourage everyone to feel proud of Walsall

Scrutiny recognises good and improved performance and feeds back to services, for example improvements in education, recycling and libraries.

5.7 Make it easier to access local services

The Review of Disability Strategy has identified several access issues through access audits and the availability of alternative formats for people with disability.

5.8 Strengthen the local economy

The Regeneration working group is working with Walsall Regeneration Company to look at accessibility planning software to map transportation issues currently affecting or potentially affecting the success of economic regeneration projects within the borough

5.9 Listen to what local people want

Scrutiny Board workshops have identified the need for better publicity and promoting scrutiny to encourage the citizens to participate. More people have been included in the evidence gathering of the Working groups, which has widened the interest factor.

5.10 Transform Walsall into an excellent local authority

Scrutiny is monitoring performance, challenging cabinet decisions, receiving strategies and improvement plans and exercising a “critical friend” role.

6. End of year reviews

6.1 During the March and April cycle of panel meetings each panel undertook an informal review of their activities. In addition all scrutiny panel members were invited to an event on 13 April to consider:

- What had gone well and what had gone less well during the year.
- Review the overall scrutiny activities in 2004/05.
- Consider scrutiny in the context of CPA.

6.2 Both at individual panels and the event on 13 April, members were positive about achievements during the year and expressed the view that scrutiny had improved but there were still areas for improvement. Several members expressed the view that the working groups had made a positive contribution and recognised good progress had been made in cross-party working and working with Cabinet. Members recognise that scrutiny is evolving and feel stronger links with the public and LNPs would be beneficial and that in many cases the impact scrutiny has and its effectiveness will not be immediately apparent.

6.3 At the end of year event, members considered scrutiny in the context of CPA, based on the methodology used during the March 2005 corporate assessment. This gave members the opportunity to assess performance against a recognised framework and they made the following observations:

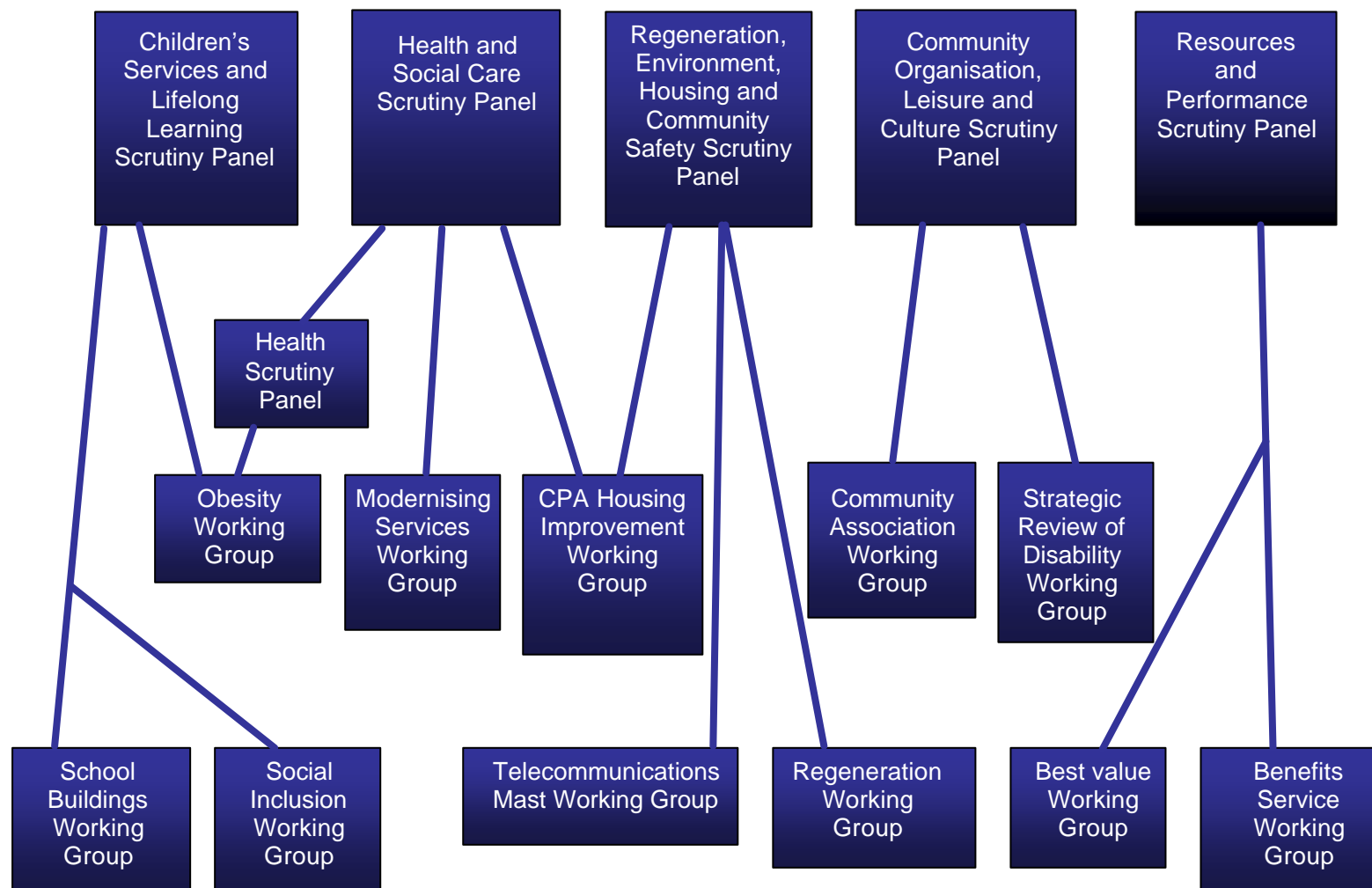
- Important to stay focused on issues and keep meetings focussed.
- The role of Scrutiny has the potential to be utilised more and its profile should be raised.
- A closer working relationship with portfolio holders would be beneficial.
- Important to link common themes and conduct more joint panel working.

It was also recognised that as the CPA methodology is to change, it is important that scrutiny remains focussed and committed so it can meet the challenges of the new methodology in a proactive rather than reactive way.

7. Looking to the Future

Some 2004/5 scrutiny will continue into 2005/6. Whilst recognising that there are still areas for improvement we should not lose sight of the progress made. The scrutiny team will facilitate the further development of scrutiny and clear targets are contained within their team plan and will be in the revised CPA Improvement Plan, which will provide the framework for scrutiny to continue to develop.

Scrutiny Panel Organisation Chart



Appendix 2

SUMMARY OVERVIEW OF SCRUTINY ACTIVITY 2004/5 MUNICIPAL YEAR					Last updated:	25/04/2005
DETAILS	NOTE NUMBER	COMMUNITY ORGANISATION, LEISURE AND CULTURE	RESOURCES AND PERFORMANCE	REGENERATION, ENVIRONMENT, HOUSING AND COMMUNITY SAFETY	CHILDREN'S SERVICES AND LIFE LONG LEARNING	HEALTH & SOCIAL CARE
MEMBERSHIP & MEETINGS						
Chair		Towe	Sanders	I.Shires	M. Bird	Oliver
Vice Chair		Philips	Sahori	Yasin	E.Pitt	Woodruff
Number of Members	1	9	9	9	15	9
Number of Meetings	2	9	7	9	9	7
Meetings x Members		81	63	81	135	63
Apologies/Substitutions	3	9	10	5	22	9
Absences	4	10	10	22	24	6
Attendance rate	5	76.54%	68.25%	66.67%	65.93%	76.19%
Number of meetings of sub groups.		7	3	12	2	14
AGENDAS						
Number of agenda items	6	37	34	37	43	41
Average agenda items per meeting		4.1	4.9	4.1	4.8	5.9
Number of call in meetings		2	0	1	0	0
Subjects of call ins:						
1		Putting the Citizen First		Neighbourhood Resource Centres		
2		Implementing Local Neighbourhood Partnerships				
Outcome of call ins:						
1		Upheld Cabinet Decision		Please refer to note 10.		
2		Upheld Cabinet Decision				
Number of sub groups		2	2	3	3	4
Titles of sub groups						
1		Community Associations Working Group	Best Value Working Group	Telecommunications Masts Working Group	School Buildings Working Group	Health Scrutiny Panel
2		Strategic Review of Disability Working Group	Benefits Services Working Group	Regeneration Working Group	Social Inclusion Working Group	Obesity Joint Working Group
3				CPA Housing Improvement Joint Working Group	Obesity Joint Working Group	Modernising Services Working Group
4						CPA Housing Improvement Joint Working Group
RECOMMENDATIONS						
Recommendations to cabinet		2	5	4	2	1
Nature of recommendations		Putting the Citizen First	Free school meals	West Midlands Bus Strategy	School Buildings	Budget consultation
		Budget consultation	Independent review of welfare benefits	Telecommunications Masts	Budget consultation	
			Decision Conferencing	Budget consultation		
			Best Value Review	Neighbourhood resource centres		
			Budget Consultation			
Outcome from cabinet		declined	endorsed	noted	noted to be incorporated	noted
		noted	incorporated	endorsed	noted	
			noted	noted		
			endorsed	incorporated		
			noted			
Number of site visits	7	3	0	0	0	0
Number of meetings at which partners and other stakeholders actively participated	8	3	0	5	2	8
No of meetings at which members of the public participated.	9	1	0	1	0	3

NOTES

- Substantive members including chairs and vice chairs.
- Number of meetings including specials and calls ins but not meetings of sub groups.
- Total number of apologies and/or substitutions of substantive members (nb an apology and substitution in relation to the same member at the same meeting counts as 1).
- Total number of members not attending and not offering apologies or substitution.
- Attendance rate for substantive members of the panel.
- Agenda items excluding apologies, substitutions, party whips, minutes and the work programme update.
- Visits away from the council house.
- Including sub groups - Active participation (ie: speaking of partners, stakeholders, public).
- Active participation (ie: speaking of residents, service users, members of the WMBC public).
- That Cabinet notes and endorses the findings and recommendations of the scrutiny panel, and requests a report to a future meeting of Cabinet that specifically addresses the following:
 - A reassessment of the current best value review programme, setting out those areas that remain critical to the council's overall improvement plan, making suggested additions and substitutions where considered appropriate;
 - Critically appraises and revises, where appropriate, the corporate criteria for determining best value reviews before the publication of the next best value performance plan;
 - Sets out the outcomes of an objective evaluation of the crime and disorder best value cross cutting review to extract and share any learning for Walsall MBC.

DATE OF COMMITTEE	Community Organisation leisure and Culture	Themes						
		Budget	Performance Management	Strategy & Policy Review	Work Plan & Monitoring	Call-in	Working Group Feedback	Key Discussions
28.07.04	The Good Scrutiny Guide							
	Review of Scrutiny Activity 2003/4							
	Consideration for Effective Scrutiny							
	Annual Work Programme							
	Scrutiny Training Programme							
16.09.04	Work Programme							
	Disability Strategy Review							
	Putting the Citizen First							
27.10.04	Changes in Youth Service and Community Funding							
	Feedback from Working Group meetings							
	Community Association Working Group							
	Strategic Review of Disability Issues							
	Disability and Employment – An Overview							
	Illumination Update							
	Quarterly Performance Report							
03.12.04	Putting the Citizen First							
09.12.04	Putting the Citizen First							
	Community Association Working Group							
	Procurement - Gateways							
	Emergency Planning - Exercise Forest							
	Strategic Review of Disability Issues							
	Ofsted Youth Services Update							
	Library Service Review							
27.01.05	Community Association Working Group							
	Strategic Review of Disability Issues							
	a. Working Group feedback							
	b. One Stop Shop							
	c. Physical Access to Services							
	Library Service Review							
	Budget Consultation							
	a. Draft Corporate Revenue budget 2005/6 to 2007/8							
	b. Draft Capital Programme 2005/6 - 2007/8							
02.02.05	c. Detailed Service Estimate reports							
	Call-in of Implementing Local Neighbourhood Partnerships							
	Matters arising - Budget Process							
23.02.05	Strategic review of Disability Issues							
	Local Neighbourhood Partnerships							
	Performance Monitoring - Nine Month Update							
	Strategic Review of Disability Issues							
05.04.05	Community Association Working Group							
	Dangerfield LNC							
	Freedom of Information							
	Citizens Panel – Presentation							
	Putting the Citizen First - Update							
	Review of Community Organisation Leisure and Culture							

Appendix 4

DATE OF COMMITTEE	Childrens Service and Lifelong learning	Themes							
		Budget	Performance Management	Strategy & Policy Review	Work Plan & Monitoring	Call-in	Working Group Feedback	Key Discussions	Reference from Cabinet
21.07.04	The Good Scrutiny Guide								
	Review of Scrutiny Activity 2003/4								
	Consideration for Effective Scrutiny								
	Annual Work Programme								
	Ofsted Self-Assessment								
20.09.04	Pre-Ofsted briefing								
19.10.04	Ofsted								
	Progress and Attainment 2004								
	Audit Commission Questionnaire								
25.11.04	School Buildings								
30.11.04	Social Inclusion								
	a. Vision for inclusion								
	b. Sexual Health Policy for Looked After Children								
	Progress and attainment update								
	Bichard report and Governor Training								
	Annual Work Programme								
13.12.04	Cabinet resolution - Take up of free school meals (for information)								
	Putting the Citizen First								
11.01.05	Report of Cabinet - School Balances								
	Children and Young People Strategic Partnership								
	a. Teenage Pregnancy								
	b. Obesity								
	Children's Bill Update								
02.02.05	Draft Corporate Revenue budget 2005/6 to 2007/8								
	Draft Capital Programme 2005/6 - 2007/8								
	Detailed Service Estimate reports								
22.02.05	Preventing Teenage Pregnancy Workshop								
	Obesity								
	Framework for Inspection on Children's Services								
	Bichard Report Update								
	Performance Monitoring - Nine Month Update								
12.04.05	Work Group Updates								
	Obesity Work Group								
	School Buildings Work Group								
	Social Inclusion Work Group								
	Teenage Pregnancy								
	Bichard Report - Update report								
	Review of Children's Services and Lifelong Learning Scrutiny and Performance Panel 2004-2005.								

Appendix 5

DATE OF COMMITTEE	Health and Social Care	Themes							
		Budget	Performance Management	Strategy & Policy Review	Work Plan & Monitoring	Call-in	Working Group Feedback	Key Discussions	Reference from Cabinet
21.07.04	The Good Scrutiny Guide								
	Review of Scrutiny Activity 2003/4								
	Consideration for Effective Scrutiny								
	Social Care and supported housing								
	Annual Work Programme								
15.09.04	Health Scrutiny Panel and Working Groups								
	Budget Preparation								
	Performance Information								
	Consultation Issues								
	a. A Wider View								
	b. Proposal for Ward closer								
	c. Health equity audit								
	d. Foundation Trust Status								
25.10.04	Update from Sub Groups								
	Pooled Budget Executive Group								
	Anti-Poverty Unit								
06.12.04	Feedback of Working Groups								
	a. Health Scrutiny								
	b. Modernising Services								
	c. CPA Housing Improvement								
	Budget Consultation preparations								
	Policy development issues								
24.01.05	Feedback of Working Groups								
	a. Health Scrutiny								
	b. Modernising Services								
	c. CPA Housing Improvement								
	Performance Monitoring Q3								
	Financial Monitoring Q3								
	Draft Corporate Revenue Budget 2005/6-2009/10								
	Draft Capital Revenue Budget 2005/6-2009/10								
	Social Care and supported housing Estimated Outturn								
10.03.05	Consultations								
	Feedback of Working Groups								
	a. Health Scrutiny								
	b. Modernising Services								
	c. CPA Housing Improvement								
	Meals on Wheels report								
	Reprovisioning of Older People Homes								
	Response of Cabinet Budget Recommendations								
	Service Specific Performance Plan - 9 month figures								
21.04.05	Consultations								
	Policy development issues								
	Feedback of Working Groups								
	CPA Housing Improvement								
	Independent Well Being and Choice								

DATE OF COMMITTEE	Regeneration, Environment, Housing and Community	Themes							
		Budget	Performance Management	Strategy & Policy Review	Work Plan & Monitoring	Call-in	Working Group Feedback	Key Discussions	Reference From Cabinet
28.07.04	Review of Scrutiny Activity 2003/4 & Consideration for Effective Scrutiny								
	Annual Work Programme								
	Environment self assessment								
	The Window Mill - update								
04.08.04	Environment Inspection								
	West Midlands Bus Strategy								
22.09.04	Telecommunications Masts								
	Best Value Review of Community Safety								
	The Impact of Regeneration on the Vision of 2008								
	Work Programme								
	Reference from Cabinet - A Litter Plan for Walsall								
02.11.04	Feedback from Working Groups								
	a. Telecommunications Masts								
	b. Regeneration								
	Planning Best Value Review								
	Environment Inspection Report								
	Quarterly Performance Report								
15.12.04	Petition Reports								
	Feedback from Working Groups								
	a. Telecommunications Masts								
	b. Regeneration								
	Housing Inspection Report								
	Environment Inspection Report								
	Recycling Performance Indicators								
	Report on Bulky Waste Collection & Fly Tipping								
21.01.05	Walsall Windows - Supported Workshop								
	Draft Corporate Revenue Budget 2005/6 - 2009/10								
	Draft Capital Revenue Budget 2005/6 - 2009/10								
	Detailed Service Estimate Report								
26.01.05	Feedback from Working Groups								
	a. Telecommunications Masts								
	b. Regeneration								
	c. CPA Improvement Plan								
	Performance Reports								
	a. Crime and Disorder								
	b. Quarterly Performance Exception Report								
	c. Performance review update								
	Responses to Members request for further information								
	a. Fly tipping Costs								
	b. Countryside and Rights of Way Act 2000								
	Key Strategic Discussion -Regeneration Master Planning Framework								
16.03.05	Working group Feedback								
	a. Telecommunications Masts								
	b. Regeneration								
	c. CPA Improvement Plan								
	Performance Reports								
	a. Business Sector and Markets verbal								
	b.Planning improvement Plan - Update								
	c.Environment Inspection Update								
18.03.05	Review of Scrutiny Activity 2004/5								
	Neighbourhood Resources Centres								

DATE OF COMMITTEE	Resources and Performance	Themes							
		Budget	Performance Management	Strategy & Policy Review	Work Plan & Monitoring	Call-in	Working Group Feedback	Key Discussions	Reference from Cabinet
02.08.04	Annual Work Programme								
	a. Corporate Assessment CPA Improvement Plan								
	b. Potential Scrutiny Activity 2004/5								
23.09.04	Annual Work Programme								
	Budget Consultation Progress								
	Best Value Performance Indicators								
	Best Value Working Group								
	Benefits Services Working Group								
07.10.04	Independent review of welfare benefits								
04.11.04	Beacon Index								
	a. 2003/4 Outturn performance report								
	b. First quarter performance 2004/5								
	Performance management: target setting arrangements								
	revised annual programme or performance reviews								
	Medium term Financial Strategy: Outlook								
	Take up of free school meals - Feedback from Cabinet								
	Independent review of welfare benefits								
	Informal meeting: Decision conference event								
16.12.04	Performance Board - Benefits Service								
	Independent review of welfare benefits								
	Decision Conferencing								
	Putting the Citizen First								
03.02.05	Feedback from the Best Value Working Group								
	Performance Board - Education								
	Budget Consultation								
	a. Draft Corporate Revenue budget								
	b. Draft Capital Programme								
	c. Detailed Service Estimate								
	Briefing note - Framework for Inspection of Childrens' Services								
24.03.05	Service Specific Performance Plan update 9 monthly figures								
	Review of Scrutiny activities 2004/5								
	CPA improvement plan Quarter 3.								