

Cabinet – 28 October 2015

Winter Service Operational Plan 2015/16 – 2017/18

Portfolio: Councillor A Andrew, Deputy Leader, Portfolio Holder Economy, Infrastructure and Development

Related portfolios: None

Service: Engineering and Transportation

Wards: All

Key decision: No

Forward plan: Yes

1. Summary

- 1.1 The Council has a statutory duty to develop and implement a winter service operational plan to ensure so far as reasonably practicable, that traffic keeps moving even in unforeseen weather conditions and that safe passage is not endangered by snow and ice.
- 1.2 The plan covers approximately 40% of the highway network as given the scale of financial and other resources involved in delivering the winter service it is not reasonable or practicable to:
 - Provide the service on all parts of the network.
 - Ensure running surfaces are kept free of ice or snow at all times, even on the treated parts of the network.
- 1.3 This report details the arrangements to be put into place to discharge the duty whilst giving an overview of the potential changes that may be necessary as a result of the region's Combined Authority aspirations, anticipated changes to the national Winter Service code of practice and the success of the snow champion pilot programme.

2. Recommendations

- 2.1 That Cabinet approves the Winter Service Operational Plan 2015/16 – 2017/18
- 2.2 That the Executive Director, Economy & Environment in consultation with the Portfolio Holder for Economy, Infrastructure and Development be authorised to make minor amendments to the Winter Service Operational Plan, as necessary, to ensure the ongoing efficient and effective delivery of the winter service.

- 2.3 That Cabinet note the potential impact of Combined Authority transport aspirations and future changes to the Winter Service code of practice that may impact on this plan.

3. Report detail

- 3.1 The Winter Service Operational Plan 2015/17 details arrangements for the precautionary treatment of roads and pavements prior to ice formation and the clearance of snow. The plan builds on the improvements to the delivery of winter service as outlined in the 2014/15 winter service plan and consolidates a number of minor amendments implemented during the 2014/15 winter season.
- 3.2 The plan sets out the Council policy, route planning strategy, the use of weather forecasting, personnel, plant and vehicles, communications, salt supply and distribution, performance monitoring, comprehensive details of salting routes, position of salt bins, record keeping and the decision making process which determines the need for precautionary salting to take place.
- 3.3 The core winter service is delivered during the period 1 November – 31 March. However, the Council has contingency arrangements in place for the delivery of a winter service response during the period 1 October – 30 April should unusual weather conditions dictate a response.
- 3.4 During extreme weather conditions there may be a necessity to concentrate winter service treatment onto the resilience network routes (RNR) only. The RNR will be given priority during extreme weather conditions and situations where man power, salt stocks, plant and fuel for driving the plant is in short supply. Because of the significance of activating the RNR, this is undertaken in consultation with the Council's emergency planning team and will be prioritised over and above the delivery of any other route treatment.
- 3.5 During the 2014 /15 winter service season a snow champion pilot scheme was introduced. Approximately 100 volunteers were trained and equipped to clear snow and ice from footpaths within their local community. Given the relatively mild winter that was experienced, the benefit of continuing this scheme on a permanent basis still requires further evaluation. For the 2015/16 winter season, the existing volunteers will be provided with a replenishment stock of salt and further volunteers will be sought on a first come first served basis until the point is reached that the original stock of equipment purchased for the snow champion programme is exhausted.
- 3.6 During the 2014 /15 winter service season a number of roads were added to the precautionary treatment network, the most notable of these being Netherhall Avenue and Horseshoe Crescent located on the Nether Hall Park estate. Throughout the period of this plan there will be an ongoing requirement to further review and add to the treatment network as new housing development takes place.

- 3.7 Given the importance of the winter service in maintaining accessibility to schools, the provision of salt bins has again been offered. However, this remains on a chargeable basis to the individual school given the existing winter service budget is insufficient to meet this cost.
- 3.8 Of similar importance is the maintenance of the waste collection service during periods of snow and ice. The improved collaboration with the clean and green service will ensure that where additional resources are available upon completion of the defined winter service route treatments, they will be directed to waste collection route treatments not covered under the defined highway treatment routes.
- 3.9 The need for any further change to the Winter Service Operational Plan is limited at this stage, with the exception of two significant factors that are being kept under review:
- Combined Authority regional transport aspirations may impact on the existing routes treated. Officers will continue to work through the regional and local governance arrangements to ensure appropriate ongoing strategic and local route treatments.
 - Draft proposals for further change to the Well Maintained Highways infrastructure code of practice may result in a more local risk based approach to winter service delivery as opposed to the existing more prescriptive approach required through the existing code of practice.

Should there be a requirement to significantly change the winter service operational plan; a further report will be presented to Cabinet.

- 3.10 Winter season preparations are ongoing and as required by the Department for Transport, suitable salt stock levels are available for the winter season. Regional salt sharing arrangements are also in place should there be a need due to unusually adverse weather conditions.
- 3.11 General advice on preparedness for winter has been cascaded to the general public during October, with Walsall specific information and general Highways Agency campaign literature used.
- 3.12 Operation Snow Fall has taken place Saturday 17 October, where all plant and machinery associated with the delivery of the winter service was fully calibrated and tested ready for the start of the core winter season period beginning 1 November.

4. Council priorities

4.1 Creating Safe, Sustainable and Inclusive Communities

- 4.1.1 The development and application of a suitable winter service plan will assist with maintaining the safety of road users.

4.2 Supporting business to thrive and supporting local people into work

- 4.2.1 By maintaining the safe and efficient operation of the public highway during inclement weather, the efficient delivery of goods and services will be supported, helping to reduce operational costs for businesses and ultimately prices to customers. By treating the road network so that it remains suitable for use by public transport and private means of transport during inclement weather conditions, local residents will maintain daily access to their location of employment.

5. **Risk management**

- 5.1 The Council's must produce a plan for the delivery of its winter service and deliver against that plan as a first priority. Additional requests for winter service treatment can only be considered once the requirements of the Council approved plan have been delivered.
- 5.2 The most significant risk is that of a particularly harsh winter with periods of heavy snow. Under such circumstances the service will continue, but measures will be put in place to address any potential overspends, and every effort would be made to contain any such overspend within the Economy and Environment cash limit.
- 5.3 Draft proposals for the Well Managed Highways Infrastructure code of practice may result in the need to develop a more local risk based approach to the delivery of winter service. If the draft proposals are ultimately confirmed by the Department for Transport, this approach may be required to be delivered during the 2017/18 winter season. In such circumstances a revised Plan may need to be brought back to Cabinet for approval.

6. **Financial implications**

- 6.1 The winter service revenue budget allocation for the 2015/16 season is £310k. Additional resources in excess of the existing budget may be required should a particularly harsh winter with periods of heavy snow prevail. Under such circumstances the service will continue and every effort will be made to contain any such overspend within the Economy and Environment cash limit.

7. Legal implications

7.1 Section 41(1) and (1A) of the Highways Act 1980

The Council is under a statutory duty, pursuant to section 41(1) and (1A) of the Highways Act to maintain highways which are maintainable at public expense. The sections state:

- (1) The authority who are for the time being the highway authority for a highway maintainable at the public expense are under a duty to maintain the highway.
- (1A) In particular, a highway authority is under a duty to ensure, so far as is reasonably practicable, that safe passage along a highway is not endangered by snow or ice.

- 7.2** The case of *Goodes v East Sussex CC* [\[2000\] All ER \(D\) 808](#) confirmed that a highway authority's duty under [section 41\(1\)](#) of the Highways Act 1980 to "maintain the highway" was an absolute duty to keep the fabric of the highway in such good repair as to render its physical condition safe for ordinary traffic to pass at all seasons of the year, but that it did not include a duty to prevent the formation of ice or remove the accumulation of snow on the road.

7.3 Section 16 of the Traffic Management Act 2004

The Council is under a statutory duty, pursuant to section 16 of the Traffic Management Act, to manage the local road network to keep traffic moving. The section states:

- (1) It is the duty of a local traffic authority to manage their road network with a view to achieving, so far as may be reasonably practicable having regard to their other obligations, policies and objectives, the following objectives:
 - (a) Securing the expeditious movement of traffic on the authority's road network; and
 - (b) Facilitating the expeditious movement of traffic on road networks for which another authority is the traffic authority.

- (2) The action which the authority may take in performing that duty includes, in particular, any action which they consider will contribute to securing:
- (a) The more efficient use of their road network; or
 - (b) The avoidance, elimination or reduction of road congestion or other disruption to the movement of traffic on their road network or a road network for which another authority is the traffic authority;

and may involve the exercise of any power to regulate or co-ordinate the uses made of any road (or part of a road) in the road network (whether or not the power was conferred on them in their capacity as a traffic authority).

7.4 Given the extent of the statutory obligations, consideration of case law and the scale of financial and other resources involved in delivering the winter service it is not reasonable either to:

- Provide the service on all parts of the network
- Ensure running surfaces are kept free of ice or snow at all times, even on the treated parts of the network

8. Property implications

8.1 No implications as a result of this report.

9. Health and wellbeing implications

The delivery of a suitable winter service will assist with maintaining accessibility to health facilities for residents of Walsall. Given the constraints associated with the treatment of the public highway within a reasonable timeframe, it is not possible to offer a routine ice and snow clearance service to a range of other parties. However, the winter service treatment routes are designed to ensure reasonable access is maintained to the Manor Hospital and other key facilities during periods of ice and snow. Where resources permit, requests for assistance with one off treatments that assist vulnerable people and those with special needs are always considered.

10. Staffing implications

No implications as a result of this report.

11. Equality implications

- 11.1 The service will give all citizens using Walsall's highway network during winter conditions, standards of service which will maintain the safe passage of vehicular and pedestrian traffic so far as is reasonably practicable.

12. Consultation

- 12.1 The winter service plan has been developed in consultation with neighbouring authorities to ensure wherever possible a consistent winter service is delivered across the region.
- 12.2 The plan has been considered by the Corporate and Public Services Overview and Scrutiny Committee at its meeting 22 October 2015.
- 12.3 The Council has provided a report to the Department for Transport on its preparedness for the winter season. The requirement to do so arose as a direct result of the Departments review of national resilience of the transport network to extreme weather events.

Background papers

Well Maintained Highways Code of Practice for Highway Maintenance Management
(Appendix H Winter Service Practical Guidance)
2014/15 Winter Service Operational Plan

Author

Paul Leighton
Group Manager
☎ 654695
✉ paul.leighton@walsall.gov.uk



Simon Neilson
Executive Director

20 October 2015



Councillor A Andrew
Deputy Leader & portfolio holder
Infrastructure and Development

20 October 2015



Winter Service Operational Plan 2015/16 – 2017/18

October 2015



Walsall Council

Contents

Policy statement	Page 2
Legislative context	Page 3
Winter service resilience standards	Page 4
Route treatment information	Page 5
Weather forecasts	Page 9
Resilience network	Page 10
General precautionary salting & snow routes	Page 12
Town and district centres footway treatment routes	Page 71
Salt bin locations	Page 81
Salt bin criteria	Page 86
Snow Champions	Page 87
Communications	Page 88
Decision making procedure	Page 89
Decision makers	Page 93
Development plan	Page 94

Winter service policy statement

The Council has a statutory duty to develop and implement a winter service operational plan to ensure so far as reasonably practicable, that on the public highway traffic keeps moving even in unforeseen weather conditions and safe passage is not endangered by snow and ice. The plan details arrangements in place to discharge that Duty whilst also minimising the impact on vulnerable people and those with special needs.

The plan sets out the Council policy for: treatment routes, the use of weather forecasting, personnel, plant and vehicles, communications, salt supply and distribution, performance monitoring, comprehensive details of salting routes, position of salt bins, record keeping and the decision making process which determines when the winter service response is delivered.

The Council will deliver the general winter service response as and when weather conditions dictate to six pre-salting/snow clearance routes and seven retail based locations used by significant numbers of pedestrians.

A limited winter service network known as the resilience network will be treated when extremes of weather or resource shortages require the available resources to be concentrated on maintaining the operation of a minimum transport network. This will be undertaken to support the delivery of key essential services whilst maintaining economic activity where possible.

Requests for a winter service response that fall outside of this plan will only be considered once the requirements of this plan have been delivered and then within the constraints of any available resources.

Legislative Context

Section 41 (1A) Highways Act 1980

Imposes a duty to ensure, so far as reasonably practicable, that safe passage is not endangered by snow and ice.

Traffic Management Act 2004

Imposes a duty to ensure, so far as reasonably practicable, traffic keeps moving even in unforeseen weather conditions.

This is not an absolute duty, given the qualification of “reasonably practicable”

Given the scale of financial and other resources involved in delivering the winter Service, it is therefore not reasonable either to:

- Provide the service on all parts of the network
- Ensure running surfaces are kept free of ice or snow at all times, even on the treated parts of the network

In discharging the duties imposed, the Council has considered the recommendations contained within the:

The Well Maintained Highways Code of Practice for Highway Maintenance Management (Appendix H Winter Service Practical Guidance)

Winter Service Resilience Standards

Overall winter period	1 st October to 30 th April
Core Winter Period	1 st November to 31 st March
Days Resilience (Overall Winter Period)	3 Days
Days Resilience (Core Winter Period)	6 Days
Minimum Salt Stocks (assume 20g/m2 spread rate)	

	Normal treatment network (tonnes run)	Minimum Stock			
		Full Pre Season Stock (12days/48 runs)	Core Period (6 days 24 runs)	Winter Period (3 days 12 runs)	Overall Period (3 days 12 runs)
Carriageway	60	2880	1440	720	
Total		2880 tonnes	1400 tonnes	720 tonnes	

Council decision Makers	4
Contractor duty officers	5

Route treatment information

Resilience Network Route (RNR)

This route will be given priority during extreme weather conditions and situations where man power, salt stocks, plant and fuel for driving the plant is in short supply.

The primary purpose of this route treatment is to ensure a minimum transport network remains available to support the delivery of key essential services whilst maintaining economic activity where possible.

Because of the significance of activating the RNR, this will be undertaken in consultation with the Council's Emergency Planning team ensuring a joined up approach with Public Health to minimise the impact on vulnerable people.

The route will encompass the vast majority of the boroughs A road network and incorporates access to strategic medical facilities, Gas, Electricity, Water and Communications infrastructure. However, minor variations will exist as a direct consequence of practical issues associated with providing suitable turning facilities for the gritter fleet when road conditions are so extreme that the resilience network treatment has been triggered.

To further improve the initial delivery of this route treatment, the gritter fleet will be located at secure strategic locations such as fire and ambulance stations in order to aid the speedy treatment of this route.

General precautionary salting & snow routes

351Km (218miles) of Walsall's highways will be subject to general precautionary salting and snow clearance out of a total length of highway within the Borough of approximately 856Km (532miles).

There are six general precautionary salting / snow clearance routes:

All routes comprise roads on the primary network and other roads carrying substantial volumes of traffic together with some roads with high risk of early ice formation. The routes include a number of established bus routes in residential areas, important industrial estate roads and road used by heavy commuter traffic at peak periods.

Footways are not routinely treated. However, during periods of snow fall and lying snow, resource is deployed to move snow from footways in seven retail based locations used by significant numbers of pedestrians.

General residential estate roads, public rights of way and car parks are not routinely treated.

Coordination with the Council's Emergency Planning team is an integral part of the delivery of the winter service response, with a strategic overview undertaken throughout the season.

Schools

Given the importance of the winter service in maintaining accessibility to schools, the provision of salt bins is offered to all schools within the borough on a cost recovery basis.

However, during snow fall a small 1.5m³ demountable body on a small pick up vehicle is used to grit frontages to all schools that are not situated on a scheduled gritting route.

Waste collection routes

During snow fall and following the gritting of all scheduled routes, should resources be available they will be deployed to treat waste collection routes that are due for collection the following day.

Response times

All winter service personnel and plant are available on stand-by throughout the core winter period 1 November to 31 March.

- Completion of mobilisation following notification by the Decision Maker : 1 Hour
- Completion of route treatment following mobilisation :4 Hours

Salt

Salt is stored in a purpose built salt barn at Apex Road Depot and used on a last in first out basis. To ensure appropriate spread rates continue to be applied to the road network, testing for particle size is undertaken by a UKAS accredited laboratory and localised testing of moisture content is undertaken throughout the winter season. Loading is by mechanical shovel which includes a weighing mechanism.

Salt stock will be managed in accordance with the resilience standards identified in this plan.

The Council will routinely notify the Department for Transport of its salt stock levels. At times of national salt shortage, the Department will direct the distribution of salt stocks to regions of the Country in most need.

Spread Rates

When undertaking precautionary salting for ice or treatment for snow, salt will be applied to all roads detailed in the operational plan at the spread rates determined by the decision maker.

During prolonged periods of snow it will be necessary to plough continuously from the onset to prevent build-up and compaction by traffic. Such ploughing should be combined with simultaneous salting as directed by the decision maker. However, once snow depths of 100mm have been reached, or when tackling snowdrifts, or when vehicles are operating on gradients, ploughing without salting may be permitted to allow the weight of the salt load to aid vehicle traction.

Personnel

Staff Rotas

The council maintains rotas of staff on call outside normal office hours. Robust arrangements are in place to supply manpower when necessary. Contact will be by telephone (landline or mobile) plus email.

Single/Double Manning Routes

All salt spreading vehicles are single manned except when heavy snowfall occurs.

Safe Working Practices

All operations will comply with relevant codes of practice and HSE regulations including the working time directives.

Training Arrangements

The Council's highways maintenance contractor will ensure that all employees who drive winter maintenance vehicles hold the City and Guilds Winter Maintenance Operator's Certificate.

Further training is made available from time to time usually arising from service, legislative or operational procedure changes.

Operation Snowfall

A training exercise for all winter service personnel is held on one Saturday in October. This exercise is used to demonstrate the treatment routes are still suitable for the gritter fleet to travel along and all plant, machinery and personnel are in a state of readiness for the winter season.

PLANT AND VEHICLES

Fleet Inventory (Summary)

7	No	Quick change bodied gritter lorries
1	No	1.5 Tonne gritting body hopper
6	No	Hand spreaders
2	No	Small hand spreaders

(All stored at Apex Road Depot; maintained at same location).

Also available are 3. JCB 2CX tractor loaders and 1 JCB 3CXs for clearing snowdrifts.

Fuel is stored at the Apex Road Depot but may also be obtained from commercial suppliers if necessary.

Weather Forecasts

Detailed weather forecast information is provided by the Councils service provider MeteoGroup UK RoadCast service. Detailed forecast information is made available to the decision maker to assist with determining the appropriate winter service response.

The decision maker will be available 24 hours per day to receive forecasts and to consult with the meteorological consultant.

In normal circumstances, the following forecasts will be received, monitored and acted upon, as appropriate, by the decision maker:

<u>No</u>	<u>TARGET TIMES</u>	<u>INFORMATION</u>
1	07:30 hours	Morning summary
2	12:30 hours	24 hour and 2 - 5 day text forecast for the West Midlands
3	16:30 hours	Site specific temperature and dew point forecast graphs & text forecasts with probability

- Any dramatic changes, for example, snow or wash-off, is reported to the decision maker immediately, at whatever time this occurs.
- Significant weather changes will be notified to the decision maker via a pager communications system.

Significant weather changes are defined as:

- i. When the road surface minimum temperature is between plus 5 degrees Celsius and minus 5 degrees Celsius, a temperature difference of more than 2 degrees Celsius is sustained for more than one hour between the forecast temperature curve and the actual temperature curve;
- ii. When there is a change of road frost status (from non-forecast to forecast or vice versa);
- iii. When there is a change of snow status (from non-forecast to forecast or vice versa).

This information is also available on the Road Cast web site.

A network of "ICELERT" automatic sensors located within the borough and wider West Midlands region provide real time information to the decision maker to aid their decision making.

Resilience Network Route

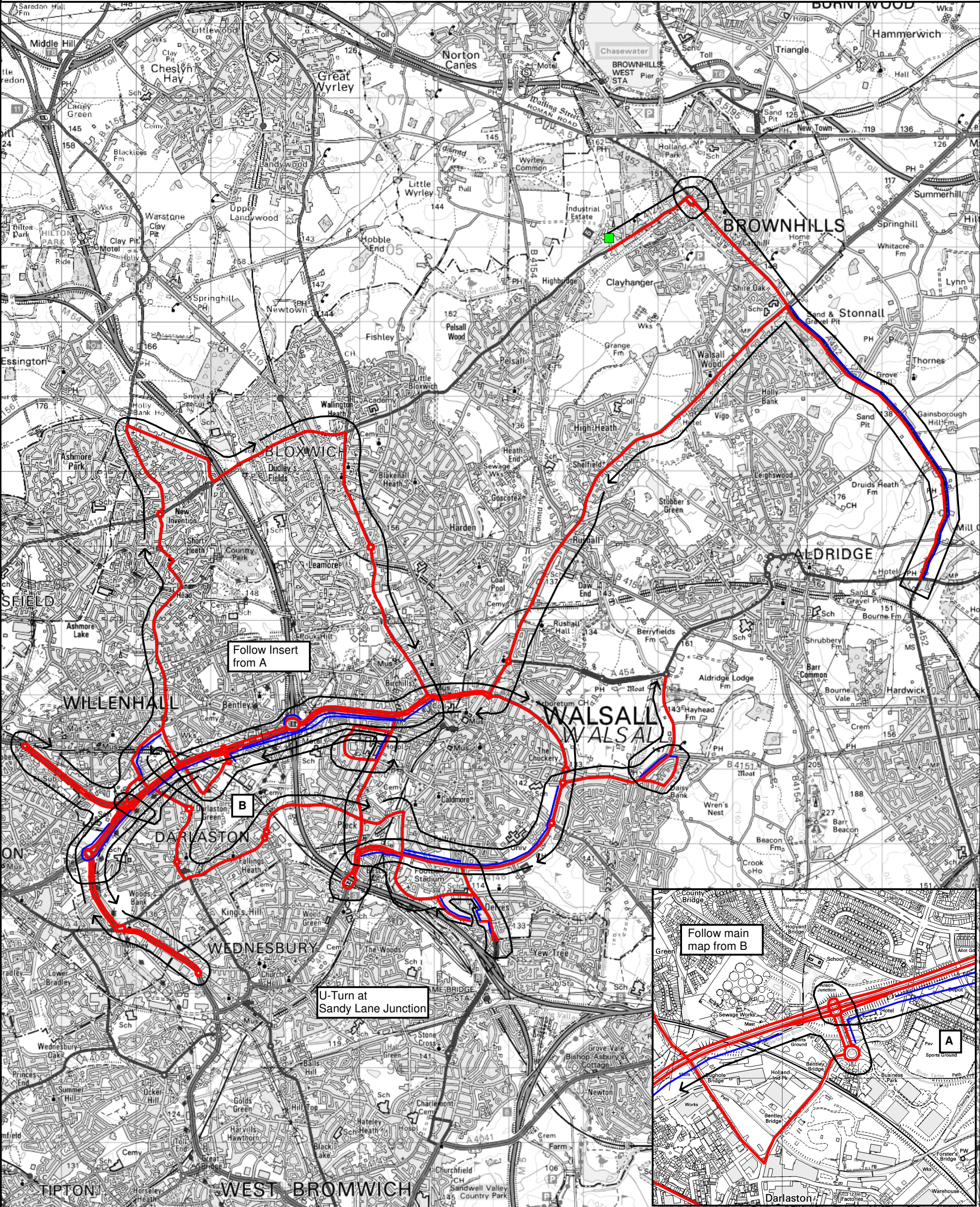
DRAFT

RESILIENCE NETWORK ROUTE



Precautionary Salting & Snow Routes

Routes 1 – 6



SALT (KM):	76.9	DEAD (KM):	19.3	TOTAL (KM):	96.2	TIME (HRS):	2:50	Underlying map base reproduced from Ordnance Survey digital map data. Ordnance Survey © Crown Copyright. All rights reserved. Licence number 100019529. Route design and artwork © Vaisala Ltd 2013.	Date: 02/09/13	Vaisala Limited Vaisala House 349 Bristol Road Birmingham B5 7SW UK www.vaisala.com trafficweatherconsulting@vaisala.com
EFF (%):	80	VEHICLE SIZE	9Cu	CLIMATIC DOMAIN	N/A	THERMAL CATEGORY	N/A		Scale: 1:45000	
									Drawn By: J. Wilson	

**DEPOT : APEX ROAD
ROUTE NUMBER : 01**

Out of depot, TURN LEFT and begin treatment

GRIT	A4124 Pelsall Road to A4124/A452 r/b (circulate r/b)	TURN RIGHT
GRIT	A452 High Street, Chester Road to A461	STRAIGHT
TRAVEL	A452 Chester Road to A454 Aldridge Road	U-TURN
GRIT	A452 Chester Road to A461 Lichfield Road	TURN LEFT
GRIT	A461 Lichfield Road, Walsall Road, Lichfield Road to A454 r/b (circulate r/b)	TURN RIGHT
GRIT	A461 Lichfield Street to A4148	TURN RIGHT
GRIT	A4148 Littleton Street West, Blue Lane West, Wolverhampton Street, Wolverhampton Road to M6/A454 r/b	STRAIGHT
GRIT	A454 Black Country Route to A454/A4444/A463 r/b	TURN LEFT
GRIT	A4444 Black Country New Road to A4444/A4038/A41 r/b	STRAIGHT
GRIT	A41 Black Country New Road to A41/Patent Shaft r/b	U- TURN
GRIT	A41 Black Country New Road to A4444/A4038/A41 r/b	STRAIGHT
GRIT	A4444 Black Country New Road to A463/A4444 r/b	TURN RIGHT
GRIT	A454 Black Country Route to M6/M454 r/b	STRAIGHT
GRIT	A454 Wolverhampton Road, Wolverhampton Street, A4148 Blue Lane West, Court Way, Littleton Street West, Broadway North, Broadway, Broadway West, Wallows Lane to A461 Bescot Road	TURN LEFT
GRIT	A461 Bescot Road to M6/A461 r/b	U-TURN
GRIT	A461 Bescot Road to A4148 Wallows Lane	TURN RIGHT
GRIT	A4148 Wallows Lane, Broadway West to Bescot Crescent	STRAIGHT

(Continued...)

**DEPOT : APEX ROAD
ROUTE NUMBER : 01 (continued)**

TRAVEL	A4148 Broadway West to A4031 West Bromwich Road	TURN RIGHT
GRIT	A4031 West Bromwich Road, Walsall Road to Sandy Lane	U-TURN
GRIT	A4031 Walsall Road, West Bromwich Road to end of dual c-way section	STRAIGHT
TRAVEL	A4031 West Bromwich Road to Brockhurst Crescent	TURN LEFT
GRIT	Brockhurst Crescent to Talke Road	TURN RIGHT
TRAVEL	Talke Road to Fullbrook Road	TURN RIGHT
TRAVEL	Fullbrook Road to A4031 West Bromwich Road	TURN LEFT
TRAVEL	A4031 West Bromwich Road to Walstead Road West	TURN LEFT
GRIT	Walstead Road West to Brockhurst Crescent	TURN LEFT
GRIT	Brockhurst Crescent to narrow bollards	U-TURN
TRAVEL	Brockhurst Crescent to Walstead Road West	TURN LEFT
GRIT	Walstead Road West, Bescot Crescent to A4148 Broadway West	TURN LEFT
TRAVEL	A4148 Broadway West, Wallows Lane to A4148 Bescot Road	TURN RIGHT
GRIT	A4148 Bescot Road, Old Pleck Road, Pleck Road to Moat Road	TURN LEFT
GRIT	Moat Road to Alumwell Road	TURN LEFT
GRIT	Alumwell Road, Ida Road to A4148 Pleck Road	TURN LEFT
TRAVEL	A4148 Pleck Road to Moat Road (on left)	STRAIGHT
GRIT	A4148 Pleck Road to A454	FILTER /TURN LEFT
TRAVEL	A454 Wolverhampton Road to M6/A454 r/b	STRAIGHT
TRAVEL	A454 Black Country Route to off slip for Marshland Way	TURN LEFT
GRIT	Off slip to Marshland Way r/b (circulate r/b)	TURN LEFT

(Continued...)

**DEPOT : APEX ROAD
ROUTE NUMBER : 01 (continued)**

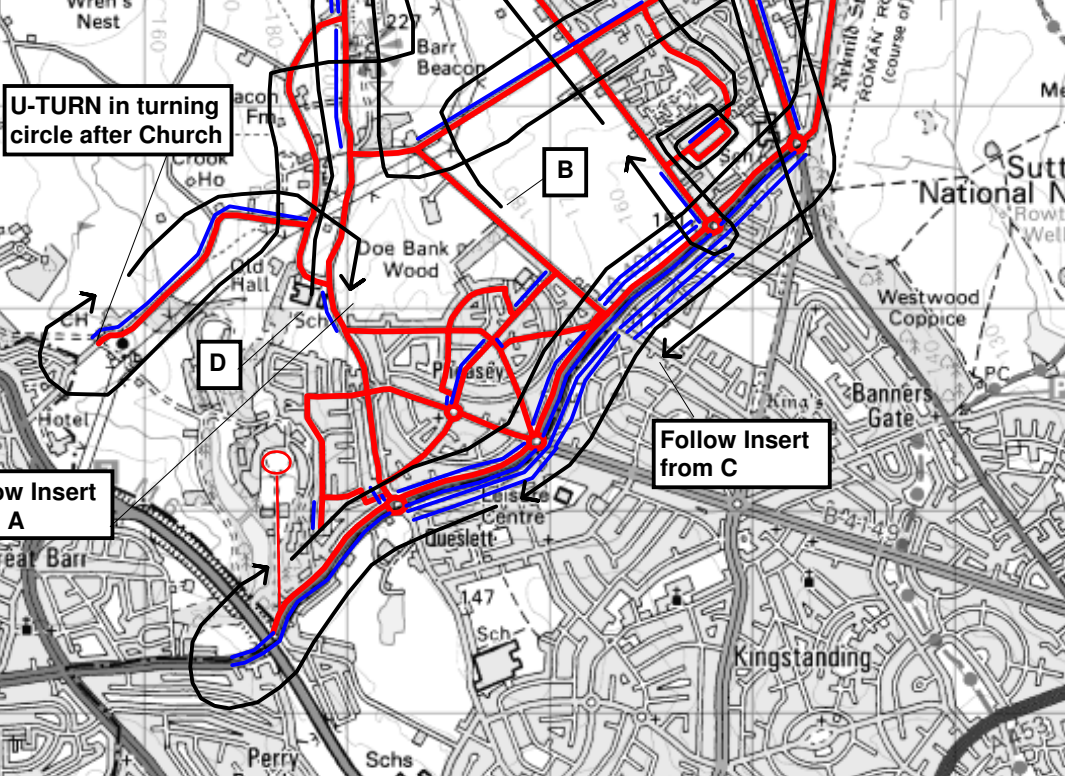
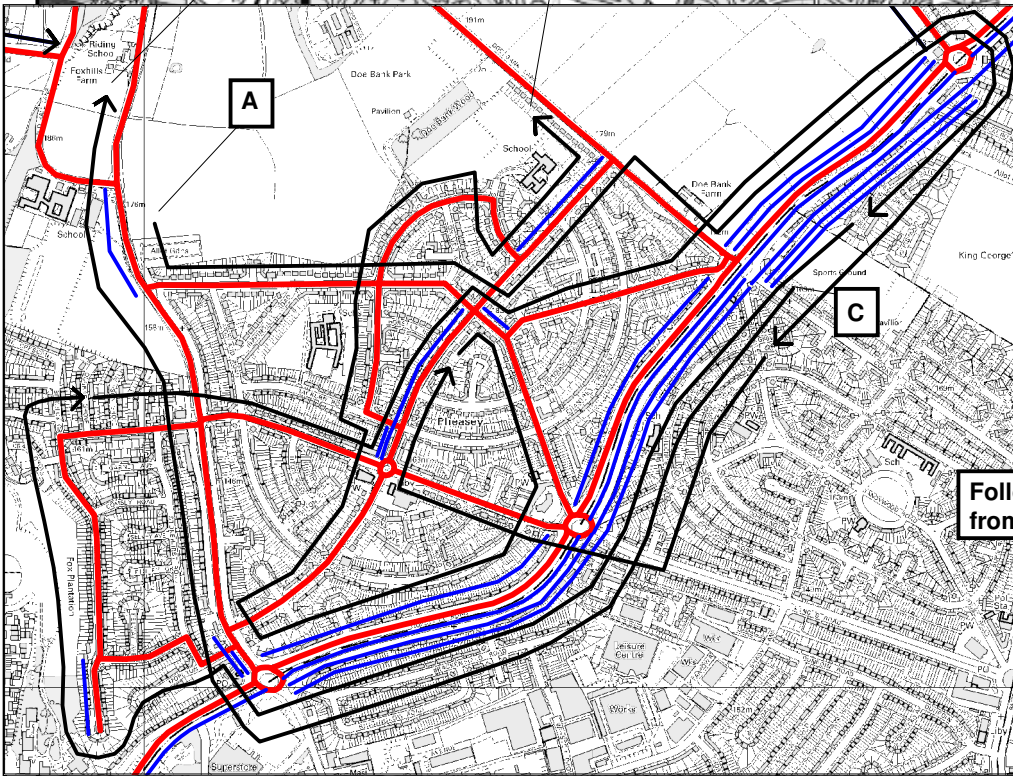
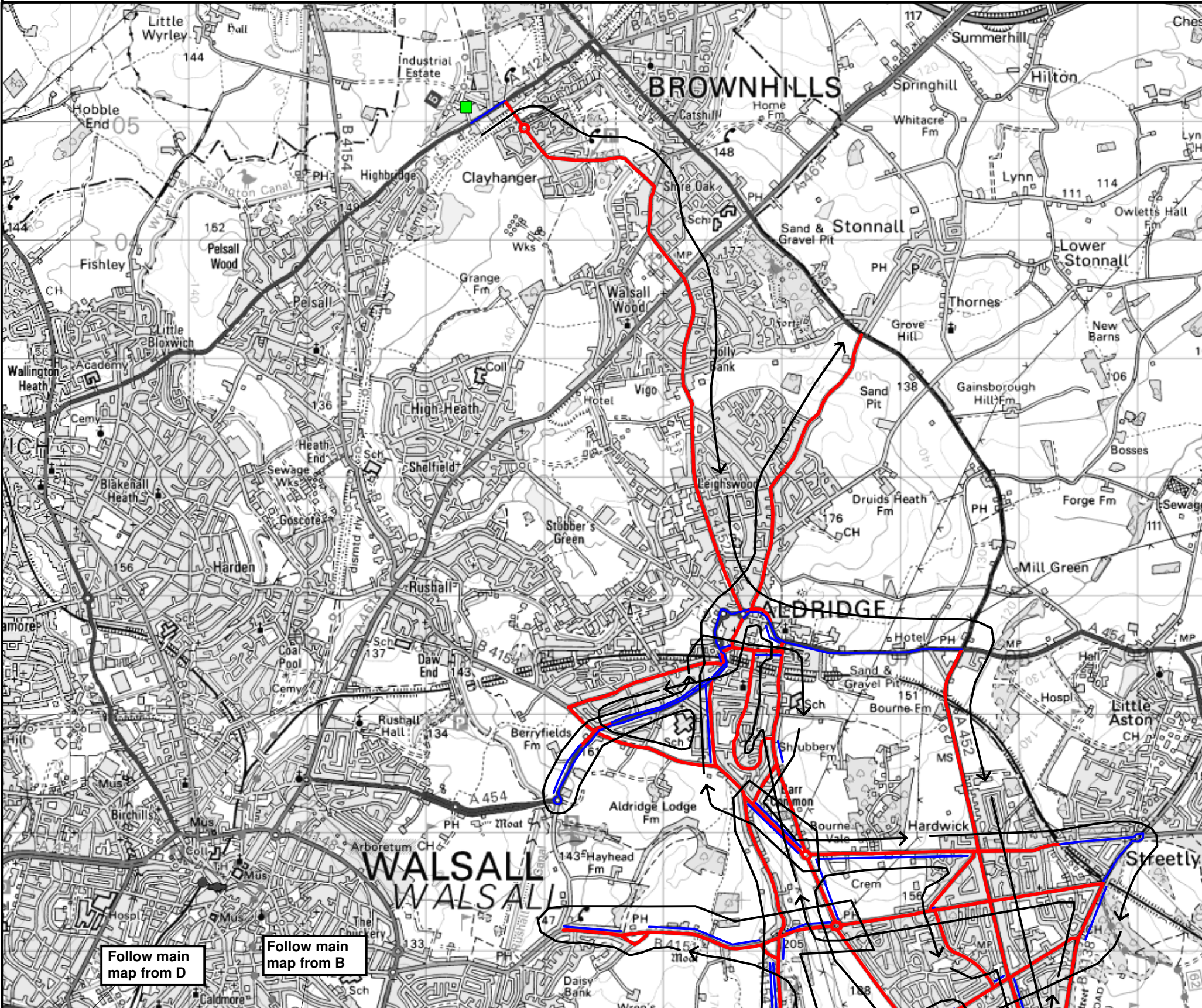
GRIT	Marshland Way to Bentley Road South r/b	U-TURN
GRIT	Marshland Way to Marshland Way r/b	TURN LEFT
GRIT	A454 on slip to A454 Black Country Route	STRAIGHT
TRAVEL	A454 Black Country Route to A454 Keyway Junction r/b off slip	TURN LEFT
GRIT	Off slip to Keyway Junction r/b (circulate r/b)	STRAIGHT
GRIT	A454 on slip to A454 Black Country Route	STRAIGHT
TRAVEL	A454 Black Country Route to A4444/A463 r/b	U-TURN
TRAVEL	A454 Black Country Route to A454 The Keyway off slip	TURN LEFT
GRIT	Off slip to Keyway Junction r/b	TURN LEFT
GRIT	A454 The Keyway to A454/B4464 r/b	U-TURN
GRIT	A454 The Keyway to Keyway Junction r/b	TURN LEFT
GRIT	A463 Armstrong Way to Owen Road r/b	TURN LEFT
GRIT	A462 Owen Road to A462 Bilston Lane	TURN RIGHT
GRIT	A462 Bilston Lane, Shepwell Green to B4464	TURN LEFT
GRIT	A462 Crescent Road, Clarkes Lane, Sandbeds Road, High Road, Straight Road, Coltham Road, Wesley Road to Coppice Lane r/b	TURN RIGHT
GRIT	A462 Cannock Road to Lichfield Road r/b	STRAIGHT
GRIT	A462 Essington Road to Sneyd Lane	TURN RIGHT
GRIT	Sneyd Lane, Crab Lane to A4124	TURN LEFT
GRIT	A4124 Lichfield Road, Sneyd Lane, Bell Lane to A34	TURN RIGHT
GRIT	A34 High Street, Somerfield Road, Green Lane, Upper Green Lane, Green Lane to A4148 Blue Lane West	TURN RIGHT

(Continued...)

**DEPOT : APEX ROAD
ROUTE NUMBER : 01 (continued)**

TRAVEL	A4148 Blue Lane West, A454 Wolverhampton Street, Wolverhampton Road to M6/A454 r/b	STRAIGHT
TRAVEL	A454 Black Country Route to Marshland Way off slip	TURN LEFT
TRAVEL	Off slip to Marshland Way r/b	TURN LEFT
TRAVEL	Marshland Way to Bentley Road South r/b	TURN RIGHT
GRIT	Bentley Road South to Willenhall Road	TURN RIGHT
GRIT	Willenhall Road, The Crescent to A462 Shepwell Green	TURN LEFT
TRAVEL	A462 Shepwell Green, Bilston Lane to Owen Road	TURN LEFT
TRAVEL	A462 Owen Road to Owen Road r/b	STRAIGHT
GRIT	A462 Midland Road to The Green r/b	TURN RIGHT
GRIT	A462 The Green, Blockall Close, St Lawrence Way to A4038	TURN LEFT
GRIT	A4038 Walsall Road, Darlaston Road, Wednesbury Road to Bescot Crescent	TURN RIGHT
GRIT	Bescot Crescent to A4148 Broadway West	TURN LEFT
TRAVEL	A4148 Broadway West, Broadway, Broadway North to B4151 Sutton Road r/b	TURN RIGHT
GRIT	B4151 Sutton Road to Longwood Lane	STRAIGHT
TRAVEL	B4151 Sutton Road to Fallowfield Road	TURN RIGHT
GRIT	Fallowfield Road to Daffodil Road	TURN RIGHT
GRIT	Daffodil Road to B4151 Sutton Road	TURN RIGHT
TRAVEL	B4151 Sutton Road to Longwood Lane	TURN LEFT
GRIT	Longwood Lane to A454 Walsall Road r/b	

End of Route. Return to Depot



SALT (KM):	58.9	DEAD (KM):	33.0	TOTAL (KM):	91.9	TIME (HRS):	2:51	<div>Underlying map base reproduced from Ordnance Survey digital map data. Ordnance Survey © Crown Copyright. All rights reserved. Licence number 100019529. Route design and artwork © Vaisala Ltd 2013.</div> <div>Date: 02/09/13</div> <div>Scale: 1:35000</div> <div>Drawn By: J. Wilson</div> <div>Vaisala Limited Vaisala House 349 Bristol Road Birmingham B5 7SW UK www.vaisala.com trafficweatherconsulting@vaisala.com</div>
EFF (%):	64	VEHICLE SIZE	6Cu	CLIMATIC DOMAIN	N/A	THERMAL CATEGORY	N/A	

**DEPOT : APEX ROAD
ROUTE NUMBER : 02**

Out of depot, TURN LEFT and proceed to junction of A4124 Pelsall Road and Clayhanger Lane

GRIT	Clayhanger Lane, Bridge Street, Clayhanger Road to B4152 Lindon Road	TURN RIGHT
GRIT	B4152 Lindon Road, Brownhills Road, Salters Road, Northgate to A454 r/b	TURN LEFT
GRIT	A454 Little Aston Road to end of Dual-C-Way section	STRAIGHT
TRAVEL	A454 Little Aston Road to A452 Chester Road r/b	TURN RIGHT
GRIT	A452 Chester Road to A4041 Queslett Road East r/b	TURN RIGHT
TRAVEL	A4041 Queslett Road East, Queslett Road to Walsall Boundary	STRAIGHT
TRAVEL	A4041 Queslett Road to safe turning point	U-TURN
TRAVEL	A4041 Queslett Road to Walsall Boundary	STRAIGHT
GRIT	A4041 Queslett Road to Netherhall Avenue	TURN LEFT
GRIT	Netherhall Avenue to Horseshoe Crescent	TURN LEFT
GRIT	Horseshoe Crescent to Netherhall Avenue	TURN LEFT
GRIT	Netherhall Avenue to A4041 Queslett Road	TURN LEFT
GRIT	A4041 Queslett Road to A452 Chester Road /B4138 Thornhill Road r/b	STRAIGHT
GRIT	B4138 Thornhill Road to B4151 Foley Road East	TURN LEFT
GRIT	B4151 Foley Road East, Foley Road West to Erdington Road r/b	TURN RIGHT
GRIT	Erdington Road to Whetstone Lane	TURN LEFT
GRIT	Whetstone Lane to Portland Road	TURN RIGHT
GRIT	Portland Road to Erdington Road	TURN LEFT
GRIT	Erdington Road to A454 Little Ashton Road	TURN LEFT
TRAVEL	A454 Little Ashton Road to B4152 Northgate/Anchor Road/High Street r/b	TURN 2nd LEFT
GRIT	Anchor Road to Portland Road	TURN RIGHT

(Route Cards for Version 1 Route Maps, September 2013) Page 1

(Continued...)

**DEPOT : APEX ROAD
ROUTE NUMBER : 02 (continued)**

GRIT	Portland Road to A454 Walsall Road	TURN LEFT
GRIT	A454 Walsall Road to Station Road	TURN RIGHT
GRIT	Station Road, Red House Lane to B4154 Bosty Lane	TURN LEFT
GRIT	B4154 Bosty Lane to Birmingham Road	TURN LEFT
GRIT	Birmingham Road to A454 Walsall Road	TURN LEFT
TRAVEL	A454 Walsall Road to A454 Aldridge Road/Longwood Lane r/b	U-TURN
TRAVEL	A454 Walsall Road to start of multi lane section	STRAIGHT
GRIT	A454 Walsall Road to end of multi lane section	STRAIGHT
TRAVEL	A454 Walsall Road to Portland Road	TURN RIGHT
GRIT	Portland Road to Whetstone Lane	STRAIGHT
TRAVEL	Portland Road to Erdington Road	TURN RIGHT
GRIT	Erdington Road to Whetstone Lane	STRAIGHT
TRAVEL	Erdington Road to Knights Hill	TURN RIGHT
GRIT	Knights Hill to Barr Common Road	TURN LEFT
GRIT	Barr Common Road to Little Harwick Road r/b (2 nd exit)	STRAIGHT
GRIT	Little Hardwick Road to Birmingham City Council Boundary	STRAIGHT
TRAVEL	Hardwick Road to B4138/B4152 r/b	TURN RIGHT
TRAVEL	B4138 Thornhill Road to Manor Road	TURN RIGHT
GRIT	Manor Road, Bridle Lane to B4154 Beacon Road	TURN RIGHT
GRIT	B4154 Beacon Road to Little Johnson's Lane	TURN LEFT
GRIT	Little Johnson's Lane to B4151 Sutton Road	TURN LEFT

(Continued...)

**DEPOT : APEX ROAD
ROUTE NUMBER : 02 (continued)**

GRIT	B4151 Sutton Road to Sutton Road (1st)	TURN LEFT
GRIT	Sutton Road to Sutton Road	TURN RIGHT
GRIT	Sutton Road to B4151 Sutton Road	TURN LEFT
GRIT	B4151 Sutton Road to Walsall Boundary	U-TURN
TRAVEL	B4151 Sutton Road to Sutton Road (1st)	STRAIGHT
GRIT	B4151 Sutton Road to Sutton Road (2nd)	STRAIGHT
TRAVEL	B4151 Sutton Road to Little Johnson's Lane	STRAIGHT
GRIT	B4151 Sutton Road, Beacon Hill to B4154/B4151 r/b	U-TURN
TRAVEL	B4151 Beacon Hill to B4154 Beacon Road	TURN LEFT
GRIT	B4154 Beacon Road to Little Johnson's Lane	STRAIGHT
TRAVEL	B4154 Beacon Road to Pinfold Lane	TURN RIGHT
GRIT	Pinfold Lane, Chapel Lane to turning circle immediately after St Margaret Church (on left)	U-TURN
TRAVEL	Chapel Lane, Pinfold Lane to Old Hall Lane	TURN RIGHT
GRIT	Old Hall Lane to B4154 Beacon Road	TURN RIGHT
GRIT	B4154 Beacon Road to Wimperis Way	TURN LEFT
GRIT	Wimperis Way, Bonnington Way to Frampton Way	TURN LEFT
GRIT	Frampton Way to Doe Bank Lane	TURN RIGHT
GRIT	Doe Bank Lane to A4041 Queslett Road	TURN LEFT
TRAVEL	A4041 Queslett Road to Bakers Lane/Aldridge Road r/b	U-TURN
TRAVEL	A4041 Queslett Road to B4154 r/b	TURN RIGHT
GRIT	B4154 Beacon Road to Moreton Avenue	TURN LEFT

(Continued...)

**DEPOT : APEX ROAD
ROUTE NUMBER : 02 (continued)**

GRIT	Moreton Avenue to Stonehurst Road	TURN RIGHT
GRIT	Stonehurst Road to Ivanhoe Road	TURN LEFT
GRIT	Ivanhoe Road to Foxwood Avenue	TURN LEFT
GRIT	Foxwood Avenue to end	U-TURN
TRAVEL	Foxwood Avenue to Park Farm Road	TURN LEFT
GRIT	Park Farm Road to Waverley Avenue	TURN RIGHT
GRIT	Waverley Avenue, Collingwood Drive to Hillingford Avenue r/b	TURN LEFT
GRIT	Hillingford Avenue to Romney Way	TURN RIGHT
GRIT	Romney Way to Stanhope Way	TURN LEFT
GRIT	Stanhope Way, Queslett Road to Doe Bank Lane	TURN RIGHT
TRAVEL	Doe Bank Lane to A4041 Queslett Road	TURN LEFT
TRAVEL	A4041 Queslett Road to Bakers Lane/Aldridge Road r/b	U-TURN
TRAVEL	A4041 Queslett Road to A4041/B4149 r/b (4 th exit)	TURN RIGHT
GRIT	Collingwood Drive to Hillingford Avenue r/b	TURN RIGHT
TRAVEL	Hillingford Avenue to Romney Way	TURN RIGHT
TRAVEL	Romney Way to Stanhope Way (on left)	STRAIGHT
GRIT	Romney Way to A4041/B4149 r/b (4 th exit)	TURN RIGHT
TRAVEL	A4041 Queslett Road to A4041/B4154 r/b	TURN RIGHT
TRAVEL	B4154 Beacon Road to Moreton Avenue (on left)	STRAIGHT
GRIT	B4154 Beacon Road to Hillingford Avenue	TURN RIGHT
GRIT	Hillingford Avenue to Collingwood Drive r/b	STRAIGHT
TRAVEL	Hillingford Avenue to Raeburn Road	TURN LEFT

(Continued...)

**DEPOT : APEX ROAD
ROUTE NUMBER : 02 (continued)**

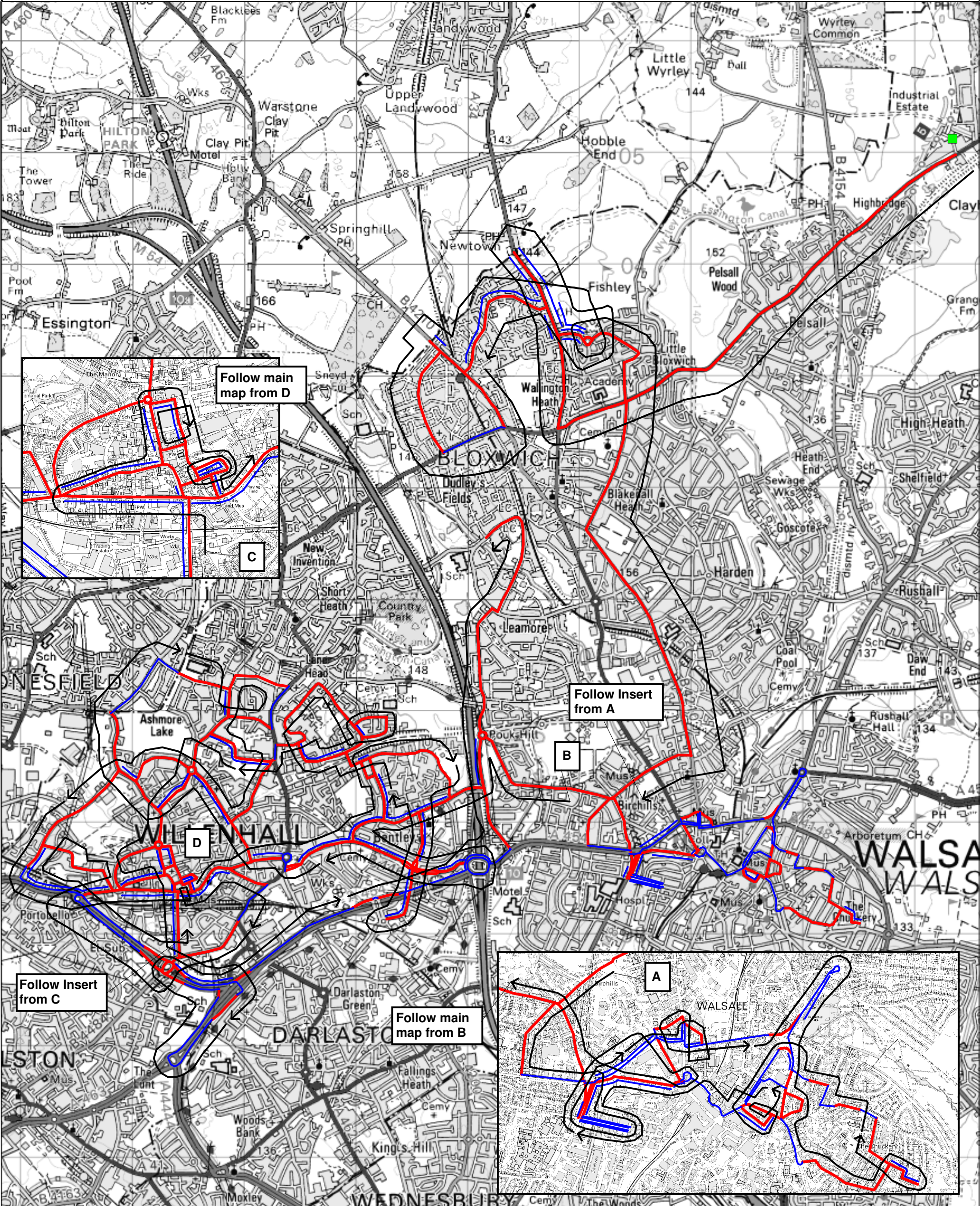
GRIT	Raeburn Road to Pomeroy Road	TURN RIGHT
GRIT	Pomeroy Road, (STRAIGHT over Wimperis Way) to Stanfield Road	TURN RIGHT
GRIT	Stanfield Road to Frampton Way	TURN LEFT
TRAVEL	Frampton Way to Doe Bank Lane	TURN LEFT
GRIT	Doe Bank Lane to Bridle Lane	TURN RIGHT
TRAVEL	Bridle Lane to Hundred Acre Road	TURN RIGHT
GRIT	Hundred Acre Road to Brabham Crescent (2 nd)	TURN LEFT
GRIT	Brabham Crescent to Hundred Acre Road	TURN LEFT
TRAVEL	Hundred Acre Road to Brabham Crescent	STRAIGHT
GRIT	Hundred Acre Road to Aldridge Road	TURN LEFT
GRIT	Aldridge Road to A4041 r/b	U-TURN
TRAVEL	Aldridge Road to Hundred Acre Road	STRAIGHT
GRIT	Aldridge Road to B4151 r/b	STRAIGHT
TRAVEL	Erdington Road to Little Hardwick Road r/b	TURN RIGHT
TRAVEL	Little Hardwick Road to Wood Lane	TURN RIGHT
GRIT	Wood Lane to B4151 Foley Road West	TURN LEFT
TRAVEL	B4151 Foley Road West to Blackwood Road	TURN RIGHT
GRIT	Blackwood Road, Ferndale Road to Bridle Lane	TURN LEFT
TRAVEL	Bridle Lane to A452 Chester Road	TURN RIGHT
TRAVEL	A452 Chester Road to A4041/A452/B4138 r/b	TURN RIGHT
TRAVEL	A4041 Queslett Road East, Queslett Road to B4151 Beacon	TURN RIGHT

(Continued...)

**DEPOT : APEX ROAD
ROUTE NUMBER : 02 (continued)**

TRAVEL	B4154 Beacon Road to Hillingford Avenue (on right)	STRAIGHT
GRIT	B4154 Beacon Road to Wimperis Way (on right)	STRAIGHT
TRAVEL	B4154 Beacon Road to Old Hall Lane (on left)	STRAIGHT
GRIT	B4154 Beacon Road to Bridle Lane (on right)	STRAIGHT
TRAVEL	B4154 Beacon Road to B4151 Sutton Road	STRAIGHT
GRIT	B4154 Longwood Road to Barr Common Road	TURN RIGHT
GRIT	Barr Common Road to Knights Hill (on left)	STRAIGHT
TRAVEL	Barr Common Road to B4154 Erdington Road r/b	U-TURN
TRAVEL	Barr Common Road to B4154 Longwood Road (on left)	STRAIGHT
GRIT	B4154 Barr Common Road to Birmingham Road	TURN RIGHT
TRAVEL	Birmingham Road to A454 Walsall Road	TURN RIGHT
TRAVEL	A454 Walsall Road, Anchor Road Bypass, Little Aston Road to Walsall Wood Road	TURN LEFT
GRIT	Walsall Wood Road to Lazy Hill Road	TURN RIGHT
GRIT	Lazy Hill Road to A452 Chester Road	

End of Route. Return to Depot



SALT (KM):	54.1	DEAD (KM):	33.0	TOTAL (KM):	87.1	TIME (HRS):	2:42	Underlying map base reproduced from Ordnance Survey digital map data. Ordnance Survey © Crown Copyright. All rights reserved. Licence number 100019529. Route design and artwork © Vaisala Ltd 2013.	Date:	02/09/13	Vaisala Limited Vaisala House 349 Bristol Road Birmingham B5 7SW UK www.vaisala.com trafficweatherconsulting@vaisala.com
EFF (%):	62	VEHICLE SIZE	6Cu	CLIMATIC DOMAIN	N/A	THERMAL CATEGORY	N/A		Scale:	1:35000	
									Drawn By:	J. Wilson	

**DEPOT : APEX ROAD
ROUTE NUMBER : 03**

Out of depot, TURN RIGHT and begin treatment

GRIT	A4124 Pelsall Road, Lichfield Road, Wolverhampton Road, Lichfield Road to A34	TURN RIGHT
GRIT	A34 Stafford Road to Staffordshire County Boundary	U-TURN (at drivers discretion)
TRAVEL	A34 Stafford Road to start of Turnberry Road junction splitter	STRAIGHT
GRIT	A34 Stafford Road to end of Turnberry Road junction splitter	STRAIGHT
TRAVEL	A34 Stafford Road to Sanstone Road	TURN LEFT
TRAVEL	Sanstone Road to Buxton Road r/b	U-TURN
TRAVEL	Sanstone Road to A34 Stafford Road	TURN RIGHT
TRAVEL	A34 Stafford Road to Turnberry Road	TURN LEFT
GRIT	Turnberry Road to B4120	TURN LEFT
GRIT	B4120 Broad Lane to A4124 Sneyd Lane	TURN RIGHT
TRAVEL	B4124 Sneyd Lane to Cresswell Crescent	TURN RIGHT
GRIT	Cresswell Crescent to B4120	TURN LEFT
GRIT	B4210 Broad Lane to Staffordshire County Boundary	U-TURN (at drivers discretion)
TRAVEL	B4210 Broad Lane to Turnberry Road	TURN LEFT
TRAVEL	Turnberry Road to A34 Stafford Road	TURN RIGHT
TRAVEL	A34 Stafford Road to Sanstone Road	TURN LEFT
GRIT	Sanstone Road circulate Buxton Road r/b	TURN LEFT

(Continued...)

**DEPOT : APEX ROAD
ROUTE NUMBER : 03 (continued)**

GRIT	Buxton Road to Stoney Lane	TURN RIGHT
GRIT	Stoney Lane to Selmans Hill	TURN LEFT
GRIT	Selmans Hill, Field Road, Pinfold to B4210	TURN LEFT
GRIT	B4210 High Street, Bloxwich Road to Hospital Street	TURN RIGHT
GRIT	Hospital Street, Old Birchills to Bentley Lane	TURN RIGHT
GRIT	Bentley Lane to Pargeter Street	TURN LEFT
GRIT	Pargeter Street to A454 Wolverhampton Road	TURN LEFT
TRAVEL	A454 Wolverhampton Road to A4148 Pleck Road	TURN RIGHT
GRIT	A4148 Pleck Road to Bridgeman Street	TURN LEFT
TRAVEL	Bridgeman Street to Augustus Street (on left)	U-TURN
TRAVEL	Bridgeman Street to A4148 Pleck Road	TURN RIGHT
GRIT	A4148 Pleck Road to A454	TURN RIGHT
TRAVEL	A454 Wolverhampton Street, A4148 Blue Lane West, Court Way to B4210	TURN LEFT
TRAVEL	B4210 Stafford Street to Day Street	TURN RIGHT
GRIT	Day Street, Wisemore to A4148 Court Way	TURN RIGHT
TRAVEL	A4148 Court Way to B4210	TURN RIGHT
TRAVEL	B4210 Stafford Street to Day Street	STRAIGHT
GRIT	B4210 Stafford Street to Blue Lane East	TURN LEFT
GRIT	Blue Lane East to A34 Green Lane	TURN LEFT
TRAVEL	A34 Green Lane to A4148	TURN LEFT
TRAVEL	A4148 Court Way, Littleton Street West to A461 Filter Lane	TURN LEFT
(Continued...)		

**DEPOT : APEX ROAD
ROUTE NUMBER : 03 (continued)**

GRIT	Start of Filter Lane to A461 Lichfield Street	STRAIGHT
TRAVEL	A461 Lichfield Street to A454 Mellish Road r/b	U-TURN
TRAVEL	A461 Lichfield Street to A4148	STRAIGHT
TRAVEL	Lower Rushall Street to Walhouse Road (on left)	STRAIGHT
GRIT	Lower Rushall Street to Holtshill Lane	TURN LEFT
GRIT	Holtshill Lane to Union Street	TURN RIGHT
GRIT	Union Street to Wedge Street	TURN RIGHT
GRIT	Wedge Street, Warewell Street to Ablewell Street	TURN LEFT
TRAVEL	Ablewell Street to Pool Street r/b	TURN LEFT
GRIT	Pool Street, Box Street, Burleigh Street, Kinnerley Street to Lumley Road	TURN LEFT
GRIT	Lumley Road to Chuckery Road	TURN RIGHT
GRIT	Chuckery Road to Willows Road	TURN RIGHT
GRIT	Willows Road to Prince's Avenue	U-TURN
TRAVEL	Willows Road to Chuckery Road	TURN LEFT
TRAVEL	Chuckery Road to Lumley Road	STRAIGHT
GRIT	Chuckery Road to Tong Street	TURN RIGHT
GRIT	Tong Street to Lincoln Road	TURN LEFT
TRAVEL	Lincoln Road to Calder Avenue (on right)	STRAIGHT
GRIT	Lincoln Road to Paddock Lane (on left)	STRAIGHT
TRAVEL	Holtshill Lane to Rowley Street	TURN RIGHT
TRAVEL	Rowley Street to Walhouse Road	TURN LEFT
(Continued...)		

**DEPOT : APEX ROAD
ROUTE NUMBER : 03 (continued)**

GRIT	Walhouse Road to Persehouse Street	STRAIGHT
TRAVEL	Walhouse Road to Lower Rushall Street	TURN RIGHT
TRAVEL	Lower Rushall Street to Lichfield Street left hand Filter Lane	TURN LEFT
GRIT	Left hand Filter Lane to Lichfield Street	STRAIGHT
TRAVEL	Lichfield Street to Bridge Street	STRAIGHT
GRIT	Bridge Street, Freer Street to Goodall Street	TURN LEFT
GRIT	Goodall Street to Bridge Street	TURN LEFT
GRIT	Bridge Street to Freer Street	TURN LEFT
TRAVEL	Freer Street to Goodall Street	TURN LEFT
TRAVEL	Goodall Street to Bridge Street	TURN RIGHT
GRIT	Bridge Street to Lower Rushall Street	TURN LEFT
GRIT	Lower Russell Street to Whittimere Street	TURN LEFT
TRAVEL	Whittimere Street to Intown Row	TURN RIGHT
TRAVEL	Intown Row to Lichfield Street	TURN LEFT
TRAVEL	Lichfield Street to Bridge Street	TURN RIGHT
TRAVEL	Bridge Street to St Pauls Street	TURN RIGHT
TRAVEL	St Pauls Street to Hatherton Road	TURN LEFT
TRAVEL	St Pauls Street to Townend Street r/b	TURN LEFT
GRIT	Townend Street, Wolverhampton Street to A4148 Wolverhampton Road	TURN LEFT
GRIT	A4148 Wolverhampton Road to A4148 Pleck Road	TURN LEFT
GRIT	A4148 Pleck Road to Pleck Road traffic lights filter junction	STRAIGHT

(Continued...)

**DEPOT : APEX ROAD
ROUTE NUMBER : 03 (continued)**

TRAVEL	A4148 Pleck Road to Bridgeman Street	TURN LEFT
TRAVEL	Bridgeman Street to Augustus Street (on left)	U-TURN
TRAVEL	Bridgeman Street to A4148 Pleck Road	TURN RIGHT
TRAVEL	A4148 Pleck Road to A454 Filter Road (on left)	STRAIGHT
GRIT	A4148 Pleck Road to A4148 Wolverhampton Street	TURN RIGHT
TRAVEL	A4148 Wolverhampton Street, Blue Lane West to A34 Green Lane	TURN RIGHT
GRIT	Green Lane to Townend Street	TURN LEFT
GRIT	Townend Street to St Pauls Street r/b	U-TURN
TRAVEL	Townend Street, Wolverhampton Street to A4148	TURN LEFT
TRAVEL	A4148 Wolverhampton Street to Hollyhedge Lane	TURN RIGHT
GRIT	Hollyhedge Lane, Bentley Lane to Bloxwich Lane r/b	TURN LEFT
GRIT	Bloxwich Lane to Churchill Road	TURN RIGHT
GRIT	Churchill Road to B4464 Wolverhampton Road West	TURN LEFT
GRIT	B4464 Wolverhampton Road West to M6/A454 r/b	U-TURN
TRAVEL	B4464 Wolverhampton Road West to start of dual c-way section	STRAIGHT
GRIT	B4464 Wolverhampton Road West to end of dual c-way section	STRAIGHT
TRAVEL	B4464 Wolverhampton Road West to Churchill Road (on right)	STRAIGHT
GRIT	B4464 Wolverhampton Road West to A462 Crescent Road	TURN RIGHT
TRAVEL	A462 Crescent Road to B4464 Walsall Road	TURN LEFT
GRIT	B4464 Walsall Road to Albion Street	TURN RIGHT
GRIT	Albion Street, St Anne's Road to Bloxwich Road South r/b	TURN LEFT

(Continued...)

**DEPOT : APEX ROAD
ROUTE NUMBER : 03 (continued)**

GRIT	Bloxwich Road South to B4484 r/b	TURN RIGHT
GRIT	B4484 Wednesfield Road, Wellington Place, Fibbersley to Broad Lane South (on right)	TURN RIGHT
TRAVEL	Broad Lane South to Pool Haynes Lane	TURN RIGHT
TRAVEL	Pool Haynes Lane to boundary	STRAIGHT
GRIT	Pool Haynes Lane to Lucknow Road	TURN RIGHT
GRIT	Lucknow Road to Spring Lane	TURN LEFT
GRIT	Spring Lane to A462 High Road	TURN LEFT
TRAVEL	A462 High Road to Mill Lane	TURN LEFT
GRIT	Mill Lane to Lucknow Road	TURN LEFT
GRIT	Lucknow Road to Pool Haynes Lane (on right)	STRAIGHT
TRAVEL	Lucknow Road to Spring Lane	STRAIGHT
GRIT	Ashmore Lake Road to Ashmore Lake Way	TURN LEFT
GRIT	Ashmore Lake Way to Charles Street	TURN RIGHT
GRIT	Charles Street, Stringles Lane to St Anne's Road	TURN RIGHT
TRAVEL	St Anne's Road to Thorne Road r/b	STRAIGHT
GRIT	Thorne Road to B4484 Wellington Place	TURN RIGHT
TRAVEL	B4484 Wellington Place to Noose Lane r/b	TURN LEFT
GRIT	Noose Lane to boundary	STRAIGHT
TRAVEL	Noose Lane to A454	TURN LEFT
TRAVEL	A454 Willenhall Road to B4464 Somerford Place r/b	TURN LEFT
GRIT	B4464 Somerford Place, New Road to B4464/B4157 r/b	STRAIGHT

(Continued...)

**DEPOT : APEX ROAD
ROUTE NUMBER : 03 (continued)**

GRIT	B4464 Walsall Road to Hall Street	TURN LEFT
GRIT	Hall Street to John Street	TURN LEFT
GRIT	John Street to Cheapside	STRAIGHT
GRIT	Cross Street to Market Place	TURN LEFT
GRIT	Market Place to B4464 New Road	TURN LEFT
TRAVEL	B4464 New Road, Walsall Road to Hall Street	STRAIGHT
GRIT	B4464 Walsall Street to Birmingham Street	TURN RIGHT
GRIT	Birmingham Street to A462 Bilston Lane	TURN RIGHT
TRAVEL	Bilston Lane to A462 Owen Road	STRAIGHT
GRIT	B4590 Bilston Lane to B4590/A454 r/b	TURN RIGHT
GRIT	A454 on slip to A454	STRAIGHT
TRAVEL	A454 The Keyway to B4464 Somerford Place r/b	TURN RIGHT
TRAVEL	B4464 Somerford Place to Summer Street	TURN LEFT
GRIT	Summer Street to Aston Road	TURN LEFT
GRIT	Aston Road to Noose Lane	TURN LEFT
TRAVEL	Noose Lane to A454	TURN LEFT
TRAVEL	A454 Willenhall Road, The Keyway to B4590 off slip	TURN LEFT
GRIT	Off slip to B4590/A454 r/b	TURN LEFT
GRIT	B4590 Bilston Lane to B4157 Rose Hill	TURN LEFT
GRIT	B4157 Rose Hill, Bilston Street to B4464 r/b	TURN LEFT
TRAVEL	B4464 New Road to Wolverhampton Street r/b (3 rd exit)	TURN RIGHT
GRIT	Wolverhampton Street to Stafford Street	TURN LEFT

(Continued...)

**DEPOT : APEX ROAD
ROUTE NUMBER : 03 (continued)**

GRIT	Stafford Street, Moat Street to B4484 r/b	U-TURN
GRIT	Moat Street to Gower Street	TURN RIGHT
GRIT	Gower Street, Upper Lichfield Street to Union Street	TURN RIGHT
GRIT	Union Street to Stafford Street	TURN RIGHT
TRAVEL	Stafford Street to Moat Street	TURN RIGHT
TRAVEL	Moat Street to Gower Street	TURN RIGHT
TRAVEL	Gower Street, Upper Lichfield Street to Union Street	STRAIGHT
GRIT	Upper Lichfield Street to Lower Lichfield Street	TURN LEFT
GRIT	Lower Lichfield Street, Leve Lane to John Street	TURN RIGHT
GRIT	John Street to Hall Street	STRAIGHT
TRAVEL	John Street to Cheapside	TURN RIGHT
GRIT	Cheapside to Lower Lichfield Street	TURN RIGHT
TRAVEL	Lower Lichfield Street, Leve Lane to John Street	TURN RIGHT
TRAVEL	John Street to Hall Street	TURN LEFT
TRAVEL	Hall Street to B4464	TURN LEFT
TRAVEL	B4464 Walsall Street to Birmingham Street (on right)	STRAIGHT
GRIT	B4464 Walsall Road to Albion Street (on left)	STRAIGHT
TRAVEL	B4464 Walsall Road to A462	TURN RIGHT
TRAVEL	A462 Crescent Road to B4464	TURN LEFT
GRIT	B4464 Wolverhampton Road West to end of dual c-way section	STRAIGHT
TRAVEL	B4464 Wolverhampton Road West to Churchill Road	TURN LEFT
TRAVEL	Churchill Road to Attlee Road	TURN LEFT

(Continued...)

**DEPOT : APEX ROAD
ROUTE NUMBER : 03 (continued)**

GRIT	Attlee Road to Bevin Road	TURN LEFT
GRIT	Bevin Road to Monmouth Road	TURN RIGHT
GRIT	Monmouth Road to Poplar Avenue	TURN RIGHT
GRIT	Poplar Avenue to Churchill Road	TURN RIGHT
TRAVEL	Churchill Road to Queen Elizabeth Avenue	TURN LEFT
GRIT	Queen Elizabeth Avenue to B4464	STRAIGHT
GRIT	Bentley Road North to Bentley Road South r/b	U-TURN
TRAVEL	Bentley Road North to B4464 Wolverhampton Road West	STRAIGHT
GRIT	Queen Elizabeth Avenue to Morris Avenue (on left)	STRAIGHT
TRAVEL	Queen Elizabeth Avenue to Churchill Road	TURN LEFT
TRAVEL	Churchill Road to Attlee Road	TURN RIGHT
TRAVEL	Attlee Road to Bevin Road (on left)	STRAIGHT
GRIT	Atlee Road to Poplar Avenue	TURN LEFT
TRAVEL	Poplar Avenue to Monmouth Road	STRAIGHT
GRIT	Poplar Avenue to Granbourne Road	TURN RIGHT
GRIT	Granbourne Road to Stroud Avenue	TURN LEFT
GRIT	Stroud Avenue to Stroud Avenue	TURN RIGHT
GRIT	Stroud Avenue (loop clockwise) to Furzebank Way (2 nd of 2)	TURN LEFT
GRIT	Furzebank Way (loop anti clockwise) to Stroud Avenue	TURN LEFT
TRAVEL	Stroud Avenue to Furzebank Way	STRAIGHT
GRIT	Stroud Avenue to Granbourne Road	STRAIGHT
TRAVEL	Stroud Avenue to Stroud Avenue	TURN LEFT

(Continued...)

**DEPOT : APEX ROAD
ROUTE NUMBER : 03 (continued)**

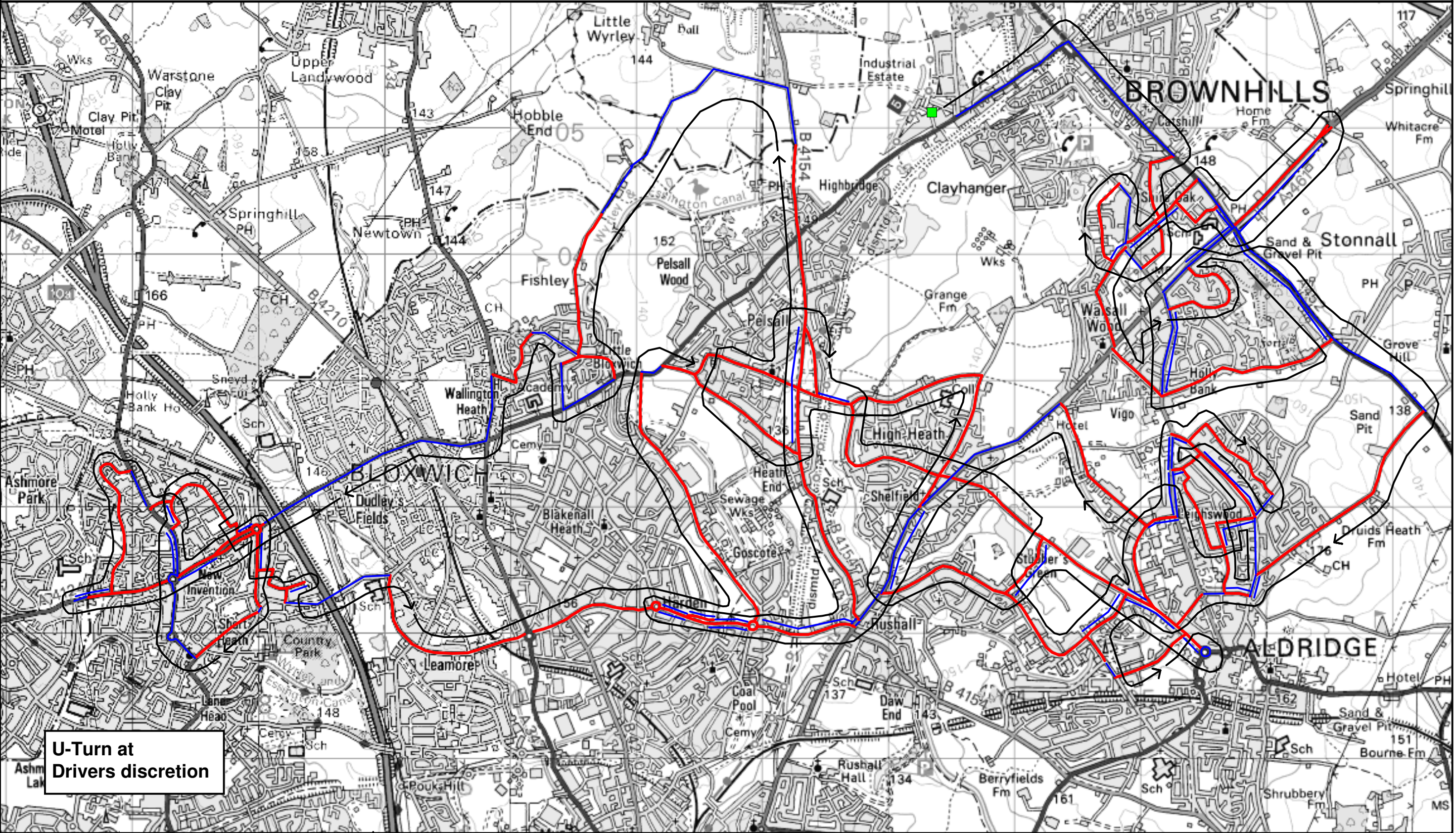
GRIT	Stroud Avenue to A462 Sandbeds Road	TURN LEFT
TRAVEL	Sandbeds Road to Charles Street r/b	TURN RIGHT
GRIT	Charles Street to Ashmore Lake Way	TURN RIGHT
TRAVEL	Ashmore Lake Way to Ashmore Lake Road	TURN LEFT
GRIT	Ashmore Lake Road, Mortimer Lane to Bloxwich Road South r/b	STRAIGHT
TRAVEL	Bloxwich Road South to B4484 r/b	TURN LEFT
GRIT	B4484 Temple Bar to B4484 Field Street r/b	TURN RIGHT
GRIT	B4484 Field Street, Pinson Road to Wolverhampton Street r/b	TURN LEFT
TRAVEL	Wolverhampton Street to Stafford Street	STRAIGHT
GRIT	Market Place to Cross Street (on left)	STRAIGHT
TRAVEL	Market Place to B4464 New Road	TURN LEFT
GRIT	B4464 New Road to B4157/B4464 r/b	TURN RIGHT
GRIT	B4157 Bilston Street, Rose Hill to B4590	TURN RIGHT
TRAVEL	B4590 Bilston Lane to A454/B4590 r/b	TURN LEFT
GRIT	A454 on slip to A454 The Keyway	STRAIGHT
TRAVEL	A454 the Keyway to Keyway Junction r/b	TURN RIGHT
GRIT	A463 on slip to A463 Black Country Route	STRAIGHT
TRAVEL	A463 Black Country Route to A463/A4444 r/b	U-TURN
TRAVEL	A463 Black Country Route to A454 off slip	TURN LEFT
TRAVEL	Off slip to A454 The Keyway Filter Lane	TURN LEFT
GRIT	Filter Lane to A454 The Keyway	STRAIGHT

(Continued...)

**DEPOT : APEX ROAD
ROUTE NUMBER : 03 (continued)**

TRAVEL	A454 The Keyway to B4590 off slip	TURN LEFT
GRIT	B4590 off slip to B4590/A454 r/b	U-TURN
TRAVEL	A454 on slip, A454 The Keyway to A453/A463 r/b	STRAIGHT
GRIT	A454 on slip to A454 Black County Route	STRAIGHT
TRAVEL	A454 Black County Route to Marshland Way off slip	TURN LEFT
GRIT	Off slip road to Marshland Way r/b	STRAIGHT
TRAVEL	Marshland Way r/b to A454 E/B on slip	STRAIGHT
GRIT	A454 on slip to A454 Black County Route	STRAIGHT
TRAVEL	A454 Black County Route to M6/A454 r/b	STRAIGHT
TRAVEL	A454 Wolverhampton Road to Bloxwich Lane	TURN LEFT
GRIT	Bloxwich Lane to Churchill Road	STRAIGHT
TRAVEL	Bloxwich Lane to Bloxwich Lane r/b	STRAIGHT
GRIT	Bloxwich Lane (circulate r/b) to Leamore Lane	TURN RIGHT
GRIT	Leamore Lane to Fryer's Road	TURN LEFT
GRIT	Fryer's Road to Willenhall Lane	TURN LEFT
GRIT	Willenhall Lane to Moorlands Road (on right)	

End of Route. Return to Depot



SALT (KM):	49.8	DEAD (KM):	33.7	TOTAL (KM):	83.5	TIME (H:M):	2:35	Underlying map base reproduced from Ordnance Survey digital map data. Ordnance Survey © Crown Copyright. All rights reserved. Licence number 100019529. Route design and artwork © Vaisala Ltd 2013.	Date:	02/09/2013	Vaisala Limited Vaisala House 351 Bristol Road Birmingham UK B5 7SW www.vaisala.com trafficweatherconsulting@vaisala.com
EFF. (%):	60	VEHICLE SIZE:	6Cu	CLIMATIC DOMAIN:	N/A	THERMAL CATEGORY:	N/A		Scale:	1:30000	
										Drawn By:	J.Wilson

**DEPOT : APEX ROAD
ROUTE NUMBER : 04**

Out of depot, proceed to junction of A452 High Street and B4152 Lindon Road

GRIT	B4152 Lindon Road to Commonsideside	TURN LEFT
GRIT	Commonsideside to Pauls Coppice	TURN LEFT
GRIT	Pauls Coppice and across Friezland Lane onto Commonsideside	STRAIGHT
GRIT	Commonsideside, Occupation Road to B4152 Brownhills Road	TURN RIGHT
TRAVEL	B4152 Brownhills Road to B4153 Coppice Road	TURN LEFT
GRIT	B4153 Coppice Road to Maybrook Road	TURN RIGHT
GRIT	Maybrook Road to Clayhanger Road	TURN RIGHT
TRAVEL	Clayhanger Road to B4152 Lindon Road	TURN RIGHT
TRAVEL	B4152 Lindon Road to Friezland Lane	TURN LEFT
GRIT	Friezland Lane to A452 Chester Road	TURN RIGHT
TRAVEL	A452 Chester Road to A461 Lichfield Road	TURN LEFT
GRIT	A461 Lichfield Road to Walsall Boundary (through c-way)	U-TURN
GRIT	A461 Lichfield Road to end of Dual Carriageway	STRAIGHT
TRAVEL	A461 Lichfield Road to A452 Chester Road	TURN RIGHT
TRAVEL	A452 Chester Road to Adams Road	TURN LEFT
GRIT	Adams Road to St Marks Road	TURN RIGHT
GRIT	St Marks Road to Friezland Lane	TURN LEFT
TRAVEL	Friezland Lane to B4152 Lindon Road	TURN LEFT
TRAVEL	B4152 Lindon Road to B4153 Coppice Road	TURN RIGHT

(Continued...)

**DEPOT : APEX ROAD
ROUTE NUMBER : 04 (continued)**

TRAVEL	B4153 Coppice Road to Maybrook Road (on right)	STRAIGHT
GRIT	B1453 Coppice Road to A461 (right then left)	STRAIGHT
GRIT	Brookland Road to B4152 Salters Road	TURN LEFT
TRAVEL	B4152 Salters Road to Wolverson Road	TURN RIGHT
GRIT	Wolverson Road, Holly Lane, Shire Ridge to A461 Lichfield Road	TURN RIGHT
TRAVEL	A461 Lichfield Road to A452 Chester Road	TURN RIGHT
TRAVEL	A452 Chester Road to Castlehill Road	TURN RIGHT
GRIT	Castlehill Road, Castle Road to B4152 Salters Road	TURN RIGHT
TRAVEL	B4152 Salters Road to A461 Lichfield Road	TURN RIGHT
TRAVEL	A461 Lichfield Road to A452 Chester Road	TURN RIGHT
TRAVEL	A452 Chester Road to Birch Lane Stonnall	TURN RIGHT
GRIT	Birch Lane Stonnall, Stonnall Road to Walsall Wood Road	TURN LEFT
TRAVEL	Walsall Wood Road to Leighswood Avenue	TURN RIGHT
GRIT	Leighswood Avenue to Broad Meadow (on right)	STRAIGHT
TRAVEL	Leighswood Avenue to B4152 Northgate r/b	STRAIGHT
GRIT	Leighswood Avenue to Leighswood Road	TURN RIGHT
GRIT	Leighswood Road, Stubbers Green Road to Wharf Approach	TURN LEFT
GRIT	Wharf Approach to Dumblederry Lane	TURN LEFT
GRIT	Dumblederry Lane to Middlemore Lane West (on right)	STRAIGHT
TRAVEL	Dumblederry Lane to Middlemore Lane	TURN LEFT
GRIT	Middlemore Lane to Leighswood Road	TURN RIGHT

(Continued...)

**DEPOT : APEX ROAD
ROUTE NUMBER : 04 (continued)**

GRIT	Leighswood Road to A454 r/b	U-TURN
TRAVEL	Leighswood Road to Middlemore Lane (on left),	STRAIGHT
GRIT	Leighswood Road to Leighswood Avenue (on right)	STRAIGHT
TRAVEL	Leighswood Road, Stubbers Green Road to Wharf Approach (on left)	STRAIGHT
GRIT	Stubbers Green Road to Barns Lane	TURN LEFT
GRIT	Barns Lane to Barns Lane	TURN RIGHT
GRIT	Barns Lane to A461 Lichfield Road	TURN RIGHT
TRAVEL	A461 Lichfield Road to Four Crosses Road	TURN LEFT
GRIT	Four Crosses Road to Mill Road (right then left)	STRAIGHT
GRIT	Green Lane to Mob Lane	TURN LEFT
GRIT	Mob Lane, Coronation Road to Ford Brook Lane	TURN RIGHT
GRIT	Ford Brook Lane, Vicarage Road to Walsall Road	TURN LEFT
GRIT	Walsall Road to Allens Lane	TURN RIGHT
GRIT	Allens Lane to Mouse Hill	TURN RIGHT
GRIT	Mouse Hill, Hall Lane to Norton Road	TURN LEFT
GRIT	Norton Road to Station Road (2 nd)	TURN RIGHT
GRIT	Station Road, Victoria Road to Ford Brook Lane	TURN LEFT
TRAVEL	Ford Brook Lane to Coronation Road (on left)	STRAIGHT
GRIT	Ford Brook Lane, Mill Road to A461 Lichfield Road	STRAIGHT
GRIT	Spring Road to Stubbers Green Road r/b	STRAIGHT
GRIT	Stubbers Green Road to Barns Lane	TURN RIGHT
		(Continued...)

**DEPOT : APEX ROAD
ROUTE NUMBER : 04 (continued)**

TRAVEL	Barns Lane to Westgate	TURN LEFT
GRIT	Westgate to Dumblederry Lane (on right)	STRAIGHT
TRAVEL	Wharf Approach to Stubbers Green Road	TURN RIGHT
TRAVEL	Stubbers Green Road to Brickyard Road	TURN LEFT
GRIT	Brickyard Road, Northgate Way to B4152 Northgate	TURN LEFT
TRAVEL	B4152 Northgate to Walsall Wood Road	TURN RIGHT
GRIT	Walsall Wood Road to Greenwood Road	TURN LEFT
GRIT	Greenwood Road to Kingshayes Road	TURN RIGHT
GRIT	Kingshayes Road to Lazy Hill Road	TURN RIGHT
TRAVEL	Lazy Hill Road to Walsall Wood Road	TURN RIGHT
GRIT	Walsall Wood Road to Greenwood Road (on right)	STRAIGHT
TRAVEL	Walsall Wood Road to B4152 Northgate	TURN LEFT
TRAVEL	B4152 Northgate to Walton Road	TURN LEFT
GRIT	Walton Road to Walsall Wood Road	TURN RIGHT
TRAVEL	Walsall Wood Road to Lancaster Avenue	TURN RIGHT
GRIT	Lancaster Avenue to Broad Meadow	TURN LEFT
GRIT	Broad Meadow to Leighswood Avenue	TURN LEFT
TRAVEL	Leighswood Avenue to Walsall Wood Road	TURN LEFT
TRAVEL	Walsall Wood Road to Lancaster Avenue	TURN LEFT
TRAVEL	Lancaster Avenue to Broad Meadow	TURN LEFT
TRAVEL	Broad Meadow to Wellfield Road	TURN RIGHT
GRIT	Wellfield Road, Brookfield Road to Herbert Road	TURN LEFT

(Continued...)

**DEPOT : APEX ROAD
ROUTE NUMBER : 04 (continued)**

GRIT	Herbert Road to Walton Road	TURN LEFT
TRAVEL	Walton Road to B4152 Northgate	TURN LEFT
TRAVEL	B4152 Northgate to Northgate Way	TURN RIGHT
TRAVEL	Northgate Way to Brickyard Road	TURN RIGHT
GRIT	Brickyard Road, Boatmans Lane to A461 Walsall Road	TURN LEFT
TRAVEL	A461 Walsall Road, Lichfield Road to Station Road	TURN RIGHT
GRIT	Station Road, Harden Road to Ross Road/Goscote Lane r/b	STRAIGHT
GRIT	Harden Road to Chestnut Road r/b	U-TURN
TRAVEL	Harden Road to start of dual carriageway	STRAIGHT
GRIT	Harden Road to end of dual carriageway section	STRAIGHT
TRAVEL	Harden Road to Ross Road/Goscote Lane r/b	STRAIGHT
TRAVEL	Harden Road, Station Road to A461 Lichfield Road	TURN LEFT
TRAVEL	A461 Lichfield Road to B4154 Pelsall Lane	TURN LEFT
GRIT	B4154 Pelsall Lane, Walsall Road to Allens Lane (on left)	STRAIGHT
TRAVEL	B4154 Walsall Road, Norton Road to Station Road (2 nd on right)	STRAIGHT
GRIT	B4154 Norton Road to A4124 Wolverhampton Road	STRAIGHT
GRIT	over A4124 onto B4154 Norton Road to Walsall Boundary	STRAIGHT
TRAVEL	B4154 Norton Road, Lime Lane to Wyrley Lane	TURN LEFT
TRAVEL	Wyrley Lane to Fishley Lane	TURN LEFT
TRAVEL	Fishley Lane to Walsall Boundary	STRAIGHT
GRIT	Fishley Lane to Buxton Road	TURN LEFT
(Continued...)		

**DEPOT : APEX ROAD
ROUTE NUMBER : 04 (continued)**

GRIT	Buxton Road, Stoney Lane, Pelsall Lane to A4124 Lichfield Road	TURN RIGHT
TRAVEL	A4124 Lichfield Road to Selmans Hill	TURN RIGHT
TRAVEL	Selmans Hill to Stoney Lane	TURN RIGHT
GRIT	Stoney Lane to Buxton Road	TURN LEFT
TRAVEL	Buxton Road to start of Buxton Road r/b splitter	STRAIGHT
GRIT	Buxton Road to r/b	TURN LEFT
GRIT	Sanstone Road, Stoney Lane to A34 Stafford Road	TURN LEFT
TRAVEL	A34 Stafford Road to A4124 Bell Lane	TURN RIGHT
TRAVEL	A4124 Bell Lane, Sneyd Lane, Lichfield Road to Crab Lane Mini r/b	STRAIGHT
GRIT	A4124 Lichfield Road to Pooles Lane r/b	TURN RIGHT
GRIT	A4124 Lichfield Road to A462 r/b	STRAIGHT
GRIT	A4124 to Walsall Boundary and at Driver's discretion	U-TURN
TRAVEL	A4124 Lichfield Road to Coppice Farm Way	TURN LEFT
GRIT	Coppice Farm Way to A462 Essington Road	TURN RIGHT
TRAVEL	A462 Essington Road to Dorchester Road	TURN LEFT
GRIT	Dorchester Road to Hilton Road	TURN RIGHT
GRIT	Hilton Road to Beacon Road	TURN RIGHT
GRIT	Beacon Road to A462 Essington Road	TURN LEFT
TRAVEL	A462 Essington Road to A4124/A462 r/b	TURN LEFT
TRAVEL	A4124 Lichfield Road to start of Dual Carriageway	STRAIGHT
GRIT	A4124 Lichfield Road to Pooles Lane r/b	TURN RIGHT

(Continued...)

**DEPOT : APEX ROAD
ROUTE NUMBER : 04 (continued)**

GRIT	Pooles Lane to Bloxwich Road North	TURN RIGHT
TRAVEL	Bloxwich Road North to Coltham Road	TURN RIGHT
GRIT	Coltham Road to A462 Wesley Road	TURN RIGHT
TRAVEL	A462 Wesley Road to Coppice Lane r/b	TURN RIGHT
TRAVEL	A462 Cannock Road to A4124 r/b	STRAIGHT
TRAVEL	A462 Essington Road to Beacon Road	TURN RIGHT
GRIT	Beacon Road to Hilton Road	TURN LEFT
GRIT	Hilton Road, Jones Road to Moore Road	TURN LEFT
GRIT	Moore Road to Fletcher Road	TURN RIGHT
GRIT	Fletcher Road to A4124 Lichfield Road	TURN LEFT
TRAVEL	A4124 Lichfield Road to Pooles Lane r/b	TURN RIGHT
TRAVEL	Pooles Lane to Byron Road	TURN LEFT
GRIT	Byron Road to Keats Road	TURN RIGHT
GRIT	Keats Road, Wordsworth Road to Coleridge Close	U-TURN
TRAVEL	Wordsworth Road to Shelley Road	TURN LEFT
GRIT	Shelley Road to Wood Lane	TURN LEFT
TRAVEL	Wood Lane, Willenhall Lane to Leamore Lane	TURN RIGHT
GRIT	Leamore Lane to A34 r/b	STRAIGHT
GRIT	Leamore Lane, Harden Road to Chestnut Road r/b	STRAIGHT
TRAVEL	Harden Road to Goscote Lane r/b	TURN LEFT
GRIT	Goscote Lane, Livingstone Road to A4124 Wolverhampton Road	TURN RIGHT

(Continued...)

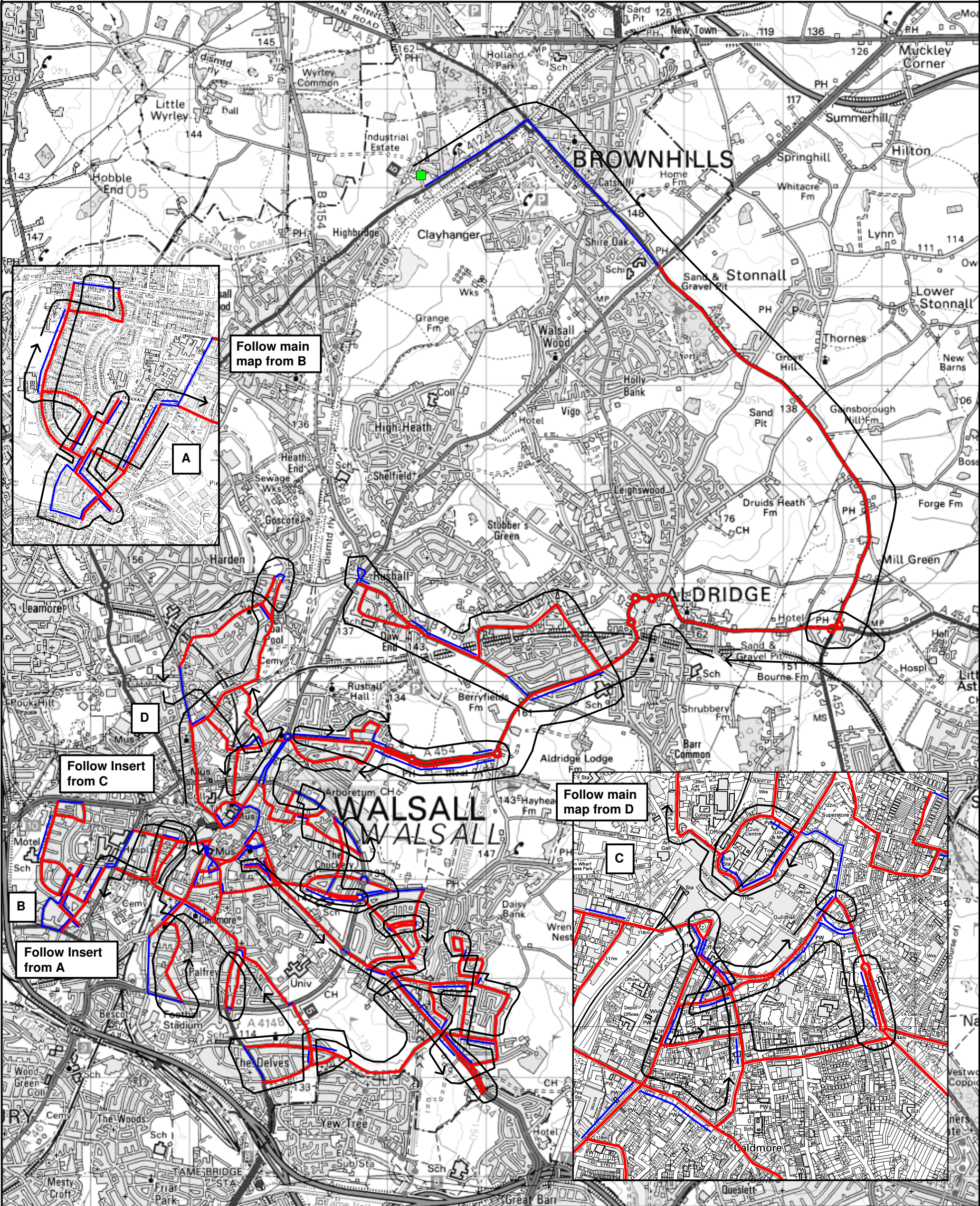
**DEPOT : APEX ROAD
ROUTE NUMBER : 04 (continued)**

TRAVEL A4124 Wolverhampton Road to Foundry Lane

TURN RIGHT

GRIT Foundry Lane to Mouse Hill (on left)

End of Route. Return to Depot.



SALT (KM):	62.5	DEAD (KM):	24.1	TOTAL (KM):	86.6	TIME (HRS):	2:41	Underlying map base reproduced from Ordnance Survey digital map data. Ordnance Survey © Crown Copyright. All rights reserved. Licence number 100019529. Route design and artwork © Vaisala Ltd 2013.	Date:	02/09/13	Vaisala Limited Vaisala House 349 Bristol Road Birmingham B5 7SW UK www.vaisala.com trafficweatherconsulting@vaisala.com
EFF (%):	72	VEHICLE SIZE	6Cu	CLIMATIC DOMAIN	N/A	THERMAL CATEGORY	N/A		Scale:	1:37000	
									Drawn By: J. Wilson		

**DEPOT : APEX ROAD
ROUTE NUMBER : 05**

Out of depot, TURN LEFT, proceed to junction of A452 Chester Road and A461 Lichfield Road

GRIT	A452 Chester Road to A454 Aldridge Road r/b	TURN RIGHT
GRIT	A454 Aldridge Road to A454 Little Aston Road r/b	U-TURN
GRIT	A454 Chester Road to A454 Aldridge Road r/b	U-TURN
TRAVEL	A454 Aldridge Road to A454 Little Aston Road r/b	TURN RIGHT
GRIT	A454 Little Aston Road to B4152 r/b	STRAIGHT
GRIT	A454 Leighwood Road to Leighswood Road r/b,	TURN LEFT
GRIT	A454 Anchor Road Bypass to Westfield Drive r/b	STRAIGHT
GRIT	A454 Anchor Road Bypass, Walsall Road to B4154 Bosty Lane	TURN RIGHT
TRAVEL	B4154 Bosty Lane to Red House Lane	STRAIGHT
GRIT	B4154 Bosty Lane, Daw End Lane to Park Road	TURN LEFT
GRIT	Park Road to Floyds Lane	TURN RIGHT
GRIT	Floyds Lane, King George Crescent to B4154 Daw End Lane	TURN LEFT
GRIT	B4154 Daw End Lane to A461 Lichfield Road	TURN RIGHT
TRAVEL	A461 Lichfield Road to Pelsall Road (slip road)	TURN LEFT
TRAVEL	Pelsall Road to Pelsall Road	TURN RIGHT
TRAVEL	Pelsall Road to A461 Lichfield Road	TURN RIGHT
TRAVEL	A461 Lichfield Road to B4154 Daw End Lane	TURN LEFT
TRAVEL	B4154 Daw End Lane to King George Crescent (on right)	STRAIGHT
GRIT	B4154 Daw End Lane to Park Road (on right)	STRAIGHT

(Continued...)

**DEPOT : APEX ROAD
ROUTE NUMBER : 05 (continued)**

TRAVEL	B4154 Daw End Lane, Bosty Lane to Middlemore Lane West	TURN LEFT
GRIT	Middlemore Lane West to Dumblederry Lane	TURN RIGHT
GRIT	Dumblederry Lane, Paddock Lane to A454 Walsall Road	TURN RIGHT
TRAVEL	A454 Walsall Road to B4154 Bosty Lane	STRAIGHT
GRIT	A454 Walsall Road to Airfield Drive r/b	TURN RIGHT
GRIT	A454 Aldridge Road, Mellish Road to A461 Lichfield Road r/b	U-TURN
TRAVEL	A454 Mellish Road to Rushall Manor Road	TURN LEFT
GRIT	Rushall Manor Road to Stencills Road	TURN RIGHT
GRIT	Stencills Road to Mellish Drive	TURN RIGHT
GRIT	Mellish Drive to Stencills Drive (on right)	STRAIGHT
TRAVEL	Mellish Drive to A454 Mellish Road	TURN LEFT
TRAVEL	A454 Mellish Road, Aldridge Road to start of dual c-way	STRAIGHT
GRIT	A454 Aldridge Road to end of dual c-way	STRAIGHT
TRAVEL	A454 Aldridge Road to A454 Walsall Road r/b	U-TURN
TRAVEL	A454 Aldridge Road to Fernleigh Road	TURN LEFT
GRIT	Fernleigh Road to Cameron Road	TURN RIGHT
GRIT	Cameron Road, Buchanan Avenue to A461 Lichfield Road r/b	TURN LEFT
TRAVEL	A461 Lichfield Street to A4148 Littleton Street West	STRAIGHT
GRIT	Lower Rushall Street to Walhouse Road	TURN LEFT
GRIT	Walhouse Road to Persehouse Street	TURN RIGHT
GRIT	Persehouse Street to Holtshill Lane	TURN LEFT

(Continued...)

**DEPOT : APEX ROAD
ROUTE NUMBER : 05 (continued)**

GRIT	Holtshill Lane to Charlotte Street	TURN LEFT
GRIT	Charlotte Street to Walhouse Road	TURN RIGHT
GRIT	Walhouse Road to A4148 Broadway North	TURN LEFT
TRAVEL	A4148 Broadway North to Rowley Street	TURN LEFT
GRIT	Rowley Street to Walhouse Road	TURN LEFT
GRIT	Walhouse Road to Charlotte Street	STRAIGHT
TRAVEL	Walhouse Road to Calder Avenue	TURN RIGHT
GRIT	Calder Avenue to Lincoln Road	TURN LEFT
GRIT	Lincoln Road to A4148 Broadway North	TURN LEFT
TRAVEL	A4148 Broadway North to Beacon Street	TURN LEFT
GRIT	Beacon Street to Prince's Avenue	TURN LEFT
GRIT	Prince's Avenue to The Crescent	STRAIGHT
TRAVEL	Prince's Avenue to Sutton Road	TURN LEFT
GRIT	Sutton Road to A4148 Broadway North r/b (cover r/b)	U-TURN
GRIT	Sutton Road to The Crescent	TURN RIGHT
GRIT	The Crescent to A4148 Broadway North r/b	STRAIGHT
TRAVEL	Over r/b to The Crescent	STRAIGHT
GRIT	The Crescent to B4151 Sutton Road	TURN RIGHT
TRAVEL	B4151 Sutton Road over A4148 Broadway North r/b	STRAIGHT
TRAVEL	Sutton Road to The Crescent	STRAIGHT
GRIT	Sutton Road to Birmingham Road r/b	STRAIGHT
(Continued...)		

**DEPOT : APEX ROAD
ROUTE NUMBER : 05 (continued)**

GRIT	Birmingham Road, Birmingham Street to New Street (on right)	U-TURN
TRAVEL	Birmingham Street, Birmingham Road to Sutton Road r/b	TURN RIGHT
GRIT	Birmingham Road to A4148 Broadway North double r/b	STRAIGHT
TRAVEL	A4148 Broadway North double r/b	STRAIGHT
GRIT	A34 Birmingham Road to boundary	U-TURN
GRIT	A34 Birmingham Road to Bell Road	TURN RIGHT
GRIT	Bell Road to Park Road	TURN RIGHT
GRIT	Park Road to Skip Lane	TURN LEFT
GRIT	Skip Lane to Park Hall Road	TURN LEFT
GRIT	Park Hall Road to Launceston Road	TURN RIGHT
GRIT	Launceston Road to Falmouth Road	TURN LEFT
GRIT	Falmouth Road to Liskeard Road	TURN RIGHT
GRIT	Liskeard Road to Redruth Road	TURN LEFT
GRIT	Redruth Road to Truro Road	TURN LEFT
GRIT	Truro Road to Liskeard Road	TURN RIGHT
TRAVEL	Liskeard Road to Launceston Road	TURN LEFT
GRIT	Launceston Road to Falmouth Road (on right)	STRAIGHT
TRAVEL	Launceston Road to Park Hall Road	TURN RIGHT
GRIT	Park Hall Road to Lonsdale Road	TURN LEFT
GRIT	Lonsdale Road to Bell Road	TURN RIGHT
TRAVEL	Bell Road to A34 Birmingham Road	TURN LEFT

(Continued...)

**DEPOT : APEX ROAD
ROUTE NUMBER : 05 (continued)**

TRAVEL	A34 Birmingham Road to Skip Lane	TURN LEFT
GRIT	Skip Lane to Skip Lane	TURN LEFT
GRIT	Skip Lane to Park Road	TURN LEFT
TRAVEL	Park Road to Lodge Road	TURN RIGHT
GRIT	Lodge Road to Park Hall Road	TURN LEFT
TRAVEL	Park Hall Road to Lonsdale Road	STRAIGHT
GRIT	Park Hall Road to Springvale Avenue	TURN LEFT
GRIT	Springvale Avenue to A34 Birmingham Road	TURN RIGHT
TRAVEL	A34 Birmingham Road to Lake Avenue	TURN RIGHT
GRIT	Lake Avenue to Gillity Avenue	TURN LEFT
GRIT	Gillity Avenue to Athlone Road	TURN 2ND RIGHT
GRIT	Athlone Road to Greaves Avenue	TURN RIGHT
GRIT	Greaves Avenue to Athlone Road	TURN RIGHT
GRIT	Athlone Road to Gillity Avenue	TURN RIGHT
TRAVEL	Gillity Avenue to Athlone Road	STRAIGHT
GRIT	Gillity Avenue to A4148/B4151 Sutton Road r/b	TURN RIGHT
TRAVEL	B4151 Sutton Road to Greaves Avenue	TURN RIGHT
GRIT	Greaves Avenue to Athlone Road (on right)	STRAIGHT
TRAVEL	Greaves Avenue to Athlone Road	STRAIGHT
GRIT	Greaves Avenue, Lake Avenue to Gillity Avenue (on right)	STRAIGHT
TRAVEL	Lake Avenue to Barry Road	TURN LEFT
(Continued...)		

**DEPOT : APEX ROAD
ROUTE NUMBER : 05 (continued)**

GRIT	Barry Road, Springvale Avenue to Park Hall Road	STRAIGHT
TRAVEL	Springvale Avenue to A34 Birmingham Road	TURN LEFT
TRAVEL	A34 Birmingham Road to Walstead Road	TURN RIGHT
GRIT	Walstead Road to Delves Green Road	TURN LEFT
GRIT	Delves Green Road to Bell Lane	TURN LEFT
GRIT	Bell Lane to Walstead Road	TURN LEFT
TRAVEL	Walstead Road to Delves Green Road	TURN LEFT
TRAVEL	Delves Green Road to Bell Lane	TURN RIGHT
GRIT	Bell Lane to A4031 West Bromwich Road	TURN RIGHT
TRAVEL	A4031 West Bromwich Road to Walstead Road	TURN RIGHT
GRIT	Walstead Road to Delves Green Road	TURN LEFT
GRIT	Delves Green Road to A4148 Broadway	TURN LEFT
TRAVEL	A4148 Broadway to Delves Road	TURN RIGHT
GRIT	Delves Road to Sandwell Street	TURN RIGHT
GRIT	Sandwell Street to West Bromwich Street	TURN LEFT
GRIT	West Bromwich Street to Weston Street	TURN LEFT
GRIT	Weston Street to A4148 Broadway	TURN LEFT
TRAVEL	A4148 Broadway to West Bromwich Road	TURN LEFT
GRIT	West Bromwich Road to Delves Road (on right)	STRAIGHT
TRAVEL	West Bromwich Road, Sandwell Street to West Bromwich Street	TURN LEFT
TRAVEL	West Bromwich Street to Weston Street	TURN RIGHT

(Continued...)

**DEPOT : APEX ROAD
ROUTE NUMBER : 05 (continued)**

GRIT	West Bromwich Street, Caldmore Green, Corporation Street to Wednesbury Road	TURN LEFT
GRIT	Wednesbury Road to Bescot Crescent	TURN LEFT
TRAVEL	Bescot Crescent to A4148 Broadway West	TURN LEFT
TRAVEL	A4148 Broadway West to Lord Street	TURN LEFT
GRIT	Lord Street to Milton Street	TURN RIGHT
GRIT	Milton Street to Wednesbury Road	TURN RIGHT
TRAVEL	Wednesbury Road to Corporation Street West	TURN LEFT
GRIT	Corporation Street West to Long Street	TURN RIGHT
GRIT	Long Street to Bridgeman Street	TURN LEFT
GRIT	Bridgeman Street to A4148 Pleck Road	TURN LEFT
TRAVEL	A4148 Pleck Road to Ida Road	TURN RIGHT
TRAVEL	Ida Road to Scarborough Road	TURN LEFT
GRIT	Scarborough Road to St John's Road	TURN RIGHT
GRIT	St John's Road to Reservoir Street	TURN LEFT
GRIT	Reservoir Street to Woodward's Road	TURN LEFT
GRIT	Woodward's Road to end	U-TURN
TRAVEL	Woodward's Road to Scarborough Road	TURN LEFT
GRIT	Scarborough Road to A4038 Darlaston Road	TURN RIGHT
TRAVEL	A4038 Darlaston Road to Reservoir Place	TURN RIGHT
TRAVEL	Reservoir Place to Woodward's Road	TURN RIGHT
TRAVEL	Woodward's Road to Reservoir Street	TURN LEFT

(Continued...)

**DEPOT : APEX ROAD
ROUTE NUMBER : 05 (continued)**

TRAVEL	Reservoir Street to Primley Avenue	TURN LEFT
GRIT	Primley Avenue to Durham Road	TURN RIGHT
GRIT	Durham Road to Jerome Road	TURN LEFT
GRIT	Jerome Road to Primley Avenue	TURN RIGHT
GRIT	Primley Avenue to Blay Avenue	TURN RIGHT
GRIT	Blay Avenue, Moat Road to Alumwell Road	TURN LEFT
GRIT	Alumwell Road to A454 Wolverhampton Road	TURN LEFT
TRAVEL	A454 Wolverhampton Road to Primley Avenue	TURN LEFT
GRIT	Primley Avenue to Blay Avenue	STRAIGHT
TRAVEL	Primley Avenue to Jerome Road (on left)	STRAIGHT
GRIT	Primley Avenue to Durham Road	TURN LEFT
TRAVEL	Durham Road to Jerome Road	TURN RIGHT
GRIT	Jerome Road to Reservoir Street	TURN LEFT
GRIT	Reservoir Street to Alumwell Road	U-TURN
TRAVEL	Reservoir Street to Jerome Road	STRAIGHT
GRIT	Reservoir Street to St John's Road	STRAIGHT
TRAVEL	Reservoir Street to Woodward's Road	TURN LEFT
TRAVEL	Woodward's Road to Scarborough Road	TURN LEFT
GRIT	Scarborough Road to St John's Road	STRAIGHT
TRAVEL	Scarborough Road to Ida Road	TURN RIGHT
TRAVEL	Ida Road to A4148 Pleck Road	STRAIGHT
		(Continued...)

**DEPOT : APEX ROAD
ROUTE NUMBER : 05 (continued)**

GRIT	Rolling Mill Street to Queen Street	TURN LEFT
GRIT	Queen Street to Bridgeman Street	TURN RIGHT
TRAVEL	Bridgeman Street to Long Street	STRAIGHT
GRIT	Bridgeman Street to Bradford Street	TURN RIGHT
TRAVEL	Bradford Street to Caldmore Road (on left)	STRAIGHT
GRIT	Bradford Street to Wednesbury Road mini r/b	STRAIGHT
GRIT	Wednesbury Road to Corporation Street	TURN LEFT
GRIT	Corporation Street to Caldmore Green	TURN LEFT
GRIT	Caldmore Green, Caldmore Road to Bradford Street	TURN RIGHT
TRAVEL	Bradford Street to Bridgeman Street	TURN LEFT
TRAVEL	Bridgeman Street to Bus Loop	TURN RIGHT
GRIT	Bridgeman Street Bus Loop to mini r/b	STRAIGHT
TRAVEL	Bradford Street to Caldmore Road	TURN LEFT
TRAVEL	Caldmore Road to Vicarage Place	TURN RIGHT
GRIT	Vicarage Place to Wednesbury Road	TURN LEFT
TRAVEL	Wednesbury Road to Glebe Street	TURN LEFT
GRIT	Glebe Street to Caldmore Road	TURN RIGHT
GRIT	Caldmore Road to Little Caldmore	TURN LEFT
GRIT	Little Caldmore, Newhall Street, Lysways Street to Birmingham Road	TURN LEFT
GRIT	Birmingham Road to Springhill Road r/b	STRAIGHT
GRIT	Springhill Road to r/b	U-TURN

(Continued...)

**DEPOT : APEX ROAD
ROUTE NUMBER : 05 (continued)**

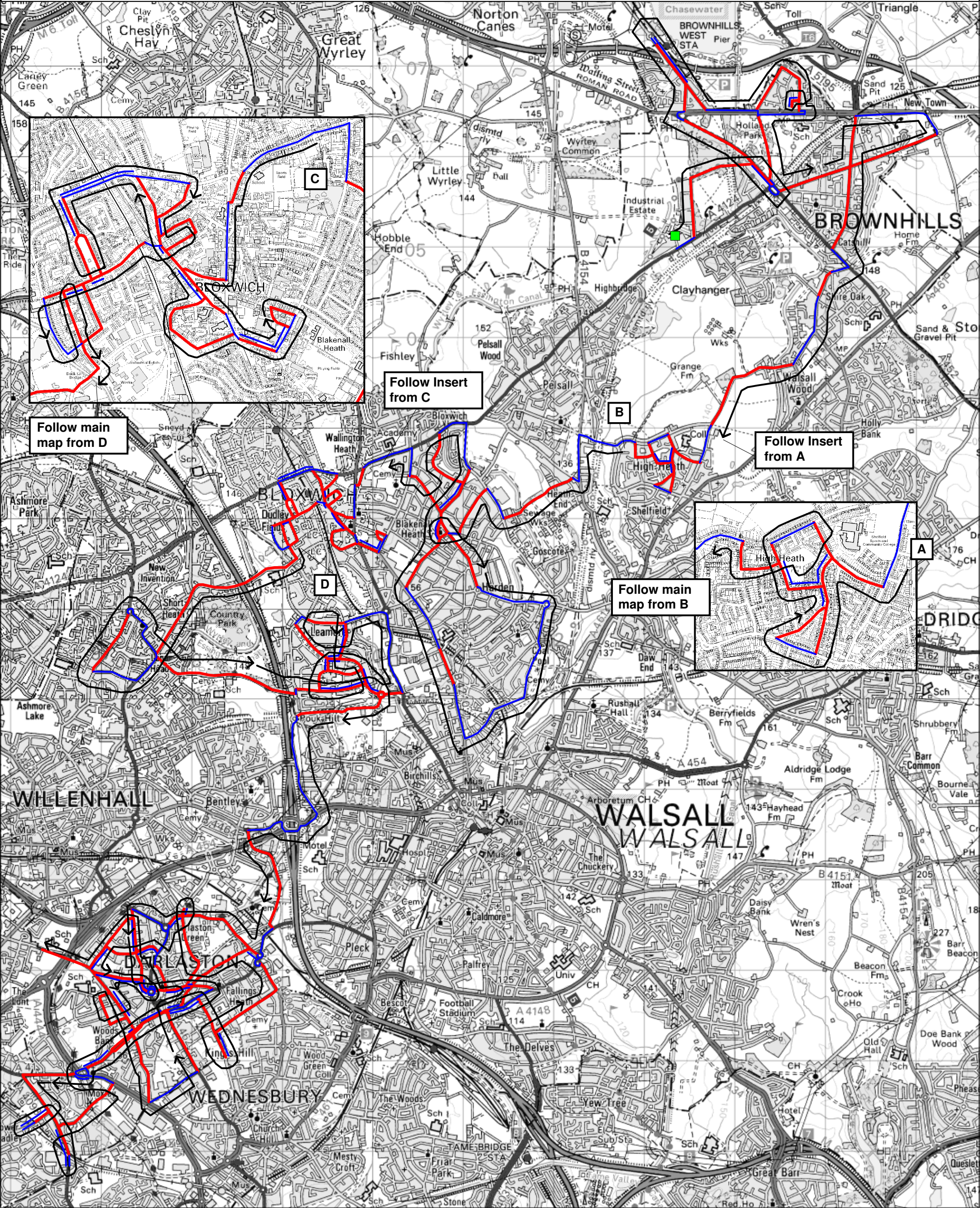
GRIT	Springhill Road to r/b (treat r/b)	U-TURN
TRAVEL	Springhill Road to Ablewell Street r/b	STRAIGHT
GRIT	Ablewell Street to Tantarra Street (on right)	FORK LEFT
TRAVEL	Ablewell Street to Upper Rushall Street	TURN LEFT
GRIT	Upper Rushall Street, Peal Street, Dudley Street to Caldmore Road (on left)	STRAIGHT
TRAVEL	Vicarage Place to Mountrath Street	TURN RIGHT
TRAVEL	Mountrath Street to Upper Hall Lane	TURN RIGHT/ STRAIGHT
GRIT	Upper Hall Lane, Dudley Street to end of Dual Carriageway	STRAIGHT
TRAVEL	Dudley Street, Peal Street, Upper Rushall Street to Ablewell Street (1 st of 2)	STRAIGHT
GRIT	Upper Rushall Street to Ablewell Street	TURN RIGHT
GRIT	Ablewell Street to Ablewell Street	FORK RIGHT
TRAVEL	Ablewell Street to Upper Rushall Street	TURN RIGHT
TRAVEL	Upper Rushall Street to Ablewell Street	STRAIGHT
TRAVEL	Lower Rushall Street to Whittimere Street	TURN LEFT
TRAVEL	Whittimere Street, Intown Row to Lichfield Street	TURN LEFT
GRIT	Lichfield Street to Bridge Street	STRAIGHT
GRIT	Bridge Street to St Paul's Street	TURN RIGHT
GRIT	St Paul's Street to Hatherton Road	STRAIGHT
GRIT	Hatherton Road to Hatherton Street	BEAR RIGHT
GRIT	Hatherton Road to Lichfield Street	TURN RIGHT
(Continued...)		

**DEPOT : APEX ROAD
ROUTE NUMBER : 05 (continued)**

TRAVEL	Lichfield Street to Bridge Street	STRAIGHT
TRAVEL	Bridge Street to St Paul's Street	TURN RIGHT
TRAVEL	St Paul's Street to Hatherton Road	TURN LEFT
GRIT	St Paul's Street to Stafford Street r/b	TURN RIGHT
GRIT	Stafford Street to A4148 Littleton Street West	STRAIGHT
GRIT	B4210 Stafford Street to Proffitt Street	TURN RIGHT
GRIT	Proffitt Street, Coalpool Lane to Coalpool Lane	TURN LEFT
GRIT	Coalpool Lane to Coalpool Lane	TURN RIGHT
GRIT	Coalpool Lane to Harden Road	TURN RIGHT
TRAVEL	Harden Road to Ross Road r/b	TURN RIGHT
GRIT	Ross Road to Coalpool Lane	TURN RIGHT
TRAVEL	Coalpool Lane to Dartmouth Avenue	TURN LEFT
GRIT	Dartmouth Avenue to Forest Lane	TURN LEFT
GRIT	Forest Lane to B4210 Bloxwich Road	TURN LEFT
TRAVEL	B4210 Bloxwich Road to Proffitt Street	TURN LEFT
TRAVEL	Proffitt Street to North Street	TURN RIGHT
GRIT	North Street to North Street	TURN LEFT
GRIT	North Street, Butts Road to Mill Lane	TURN LEFT
GRIT	Mill Lane to William Street	TURN LEFT
TRAVEL	William Street to Butts Road	TURN RIGHT
TRAVEL	Butts Road to Hatherton Street	TURN LEFT
		(Continued...)

**DEPOT : APEX ROAD
ROUTE NUMBER : 05 (continued)**

GRIT	Hatherton Street to A4148	STRAIGHT
GRIT	Hatherton Street to Hatherton Street	KEEP LEFT
TRAVEL	Hatherton Street to Lichfield Street	TURN LEFT
GRIT	Lichfield Street to A461 Lichfield Street r/b	STRAIGHT
TRAVEL	A461 Lichfield Street to Butts Road	TURN LEFT
GRIT	Butts Road to Mill Lane	TURN RIGHT
TRAVEL	Mill Lane to William Street (on left)	STRAIGHT
GRIT	Mill Lane to Coal Pool Lane	
End of Route. Return to Depot.		



SALT (KM):	51.6	DEAD (KM):	33.6	TOTAL (KM):	85.2	TIME (HRS):	2:38	Underlying map base reproduced from Ordnance Survey digital map data. Ordnance Survey © Crown Copyright. All rights reserved. Licence number 100019529. Route design and artwork © Vaisala Ltd 2012.	Date: 02/09/13	Vaisala Limited Vaisala House 349 Bristol Road Birmingham B5 7SW UK www.vaisala.com trafficweatherconsulting@vaisala.com
EFF (%) :	61	VEHICLE SIZE	6Cu	CLIMATIC DOMAIN	N/A	THERMAL CATEGORY	N/A		Scale: 1:45000	
									Drawn By: J. Wilson	

**DEPOT : APEX ROAD
ROUTE NUMBER : 06**

Out of depot, travel to the junction of Coppice Side and A4124 Pelsall Road

GRIT	Coppice Side to Coppice Lane	TURN RIGHT
GRIT	Coppice Lane to A452	TURN RIGHT
GRIT	A452 Chester Road North to A4124/B4155 r/b (do not treat r/b)	U-TURN
TRAVEL	A452 Chester Road North to Coppice Lane (on left)	STRAIGHT
GRIT	A452 Chester Road North to A5 r/b (do not treat r/b)	STRAIGHT
GRIT	Wilkin Road to Hednesford Road	TURN LEFT
GRIT	Hednesford Road, Brownhills Road to r/b	U-TURN
TRAVEL	Brownhills Road, Hednesford Road to Wilkin Road (on right)	STRAIGHT
GRIT	Hednesford Road to A5	TURN LEFT
TRAVEL	A5 to White Horse Road	TURN LEFT
GRIT	White Horse Road to Howdle's Lane	TURN RIGHT
GRIT	Howdle's Lane to Knave's Castle Avenue	TURN RIGHT
GRIT	Knave's Castle Avenue to Knave's Castle Avenue	TURN LEFT
GRIT	Knave's Castle Avenue to End	U-TURN
TRAVEL	Knave's Castle Avenue to Knave's Castle Avenue	TURN RIGHT
TRAVEL	Knave's Castle Avenue to Howdle's Lane	TURN RIGHT
GRIT	Howdle's Lane to A5	TURN LEFT
TRAVEL	A5 to Deakin Avenue	U-TURN
TRAVEL	A5 to the Parade	TURN LEFT
GRIT	The Parade to A452	TURN LEFT

(Continued...)

**DEPOT : APEX ROAD
ROUTE NUMBER : 06 (continued)**

TRAVEL	A452 Chester Road North to A4124/B4155 r/b (do not treat r/b)	TURN LEFT
GRIT	B4155 Lichfield Road to B5011	TURN LEFT
GRIT	B5011 Chase Road to A5 Watling Street	TURN RIGHT
TRAVEL	A5 Watling Street to B4155	TURN RIGHT
TRAVEL	B4155 Hanney Hay Road to B4155 Lichfield Road r/b	TURN RIGHT
GRIT	B4155 Lichfield Road to B5011	TURN LEFT
GRIT	B5011 Ogley Road to A452 High Street	TURN LEFT
TRAVEL	A452 High Street to B4152	TURN RIGHT
TRAVEL	B4152 Lindon Road to Commonsides (on left)	STRAIGHT
GRIT	B4152 Lindon Road to Clayhanger Road (on right)	STRAIGHT
TRAVEL	B4152 Lindon Road to B4153	TURN RIGHT
TRAVEL	B4153 Coppice Road to Camden Street	TURN RIGHT
GRIT	Camden Street, Green Lane to Mob Lane (on right)	STRAIGHT
TRAVEL	Green Lane to Broad Way	TURN RIGHT
GRIT	Broad Way to Broad Lane	TURN LEFT
GRIT	Broad Lane to Mill Road	TURN RIGHT
TRAVEL	Mill Road to Birch Lane	TURN RIGHT
GRIT	Birch Lane to Broad Lane	TURN LEFT
TRAVEL	Broad Lane to Harrison Road	TURN LEFT
GRIT	Harrison Road to Spring Lane	TURN RIGHT
GRIT	Spring Lane to Coronation Road	TURN RIGHT

(Continued...)

DEPOT : APEX ROAD
ROUTE NUMBER : 06 (continued)

TRAVEL	Coronation Road to Broad Way	TURN RIGHT
GRIT	Broad Way to Broad Lane	TURN RIGHT
TRAVEL	Broad Lane to Harrison Road	TURN RIGHT
TRAVEL	Harrison Road to Spring Lane	TURN RIGHT
TRAVEL	Spring Lane to Church Way	TURN LEFT
GRIT	Church Way to Field Lane	TURN RIGHT
GRIT	Field Lane to Coronation Road	TURN LEFT
TRAVEL	Coronation Road to Ford Brook Lane	TURN RIGHT
TRAVEL	Ford Brook Lane, Vicarage Road to Walsall Road	TURN LEFT
TRAVEL	Walsall Road to Allens Lane	TURN RIGHT
TRAVEL	Allens Lane to Goscote Road	TURN LEFT
GRIT	Goscote Road, Slacky Lane to Goscote Lane	TURN RIGHT
TRAVEL	Goscote Lane to Thames Road	TURN LEFT
GRIT	Thames Road to Barracks Lane	TURN RIGHT
TRAVEL	Barracks Lane to Walker Road (Go straight over Walker Road onto Blakenhall Lane - Right then Left)	STRAIGHT
GRIT	Blakenhall Lane to Blakenhall Heath	TURN RIGHT
GRIT	Blakenhall Heath to Ingram Road	TURN RIGHT
GRIT	Ingram Road, Walker Road to Harden Road r/b	TURN LEFT
TRAVEL	Harden Road to Goscote Lane r/b	TURN RIGHT
TRAVEL	Ross Road, Coalpool Lane, Proffitt Street to B4210 Bloxwich Road	TURN RIGHT

(Continued...)

**DEPOT : APEX ROAD
ROUTE NUMBER : 06 (continued)**

TRAVEL	B4210 Bloxwich Road to start of splitter at Forest Lane	STRAIGHT
GRIT	B4210 Bloxwich Road to end of splitter	STRAIGHT
TRAVEL	B4120 Bloxwich Road to Blakenhall Lane	TURN RIGHT
GRIT	Blakenhall Lane to Blakenhall Lane (on right)	STRAIGHT
TRAVEL	Blakenhall Heath to Ingram Road	TURN LEFT
GRIT	Ingram Road to Green Rock Lane	TURN RIGHT
GRIT	Green Rock Lane to Livingstone Road	TURN LEFT
TRAVEL	Livingstone Road to A4124	TURN LEFT
TRAVEL	A4124 Lichfield Road to Abbots Street	TURN LEFT
GRIT	Abbots Street to Green Rock Lane	TURN RIGHT
TRAVEL	Green Rock Lane to Ingram Road	TURN RIGHT
GRIT	Ingram Road to Field Road	TURN RIGHT
TRAVEL	Field Road to A4124	TURN LEFT
TRAVEL	A4124 Lichfield Road to Park Road	TURN LEFT
GRIT	Park Road to Park Road	TURN RIGHT
GRIT	Park Road to A34 High Street	TURN LEFT
TRAVEL	A34 High Street to Elmore Row	TURN RIGHT
GRIT	Elmore Row to B4210	TURN LEFT
GRIT	B4210 Elmore Green Road to A34 High Street	TURN RIGHT
TRAVEL	A34 High Street to B4210 High Street	TURN LEFT
GRIT	B4210 High Street to Pinfold	TURN LEFT
(Continued...)		

**DEPOT : APEX ROAD
ROUTE NUMBER : 06 (continued)**

TRAVEL	Pinfold, Field Road to Woodall Street	TURN LEFT
GRIT	Woodall Street to Church Street	TURN RIGHT
GRIT	Church Street to Field Road	TURN RIGHT
TRAVEL	Field Road, Pinfold to B4210	TURN RIGHT
TRAVEL	B4210 High Street to A34	TURN RIGHT
TRAVEL	A34 High Street to Reeves Street	TURN LEFT
GRIT	Reeves Street to Reeves Street	TURN RIGHT
GRIT	Reeves Street to Station Street	TURN RIGHT
GRIT	Station Street to B4210 Elmore Green Road	TURN LEFT
TRAVEL	B4210 Elmore Green Road to Elmore Row (on right)	STRAIGHT
GRIT	Elmore Green Road, Sand Bank to A4124 Sneyd Lane	TURN LEFT
TRAVEL	A4124 Sneyd Lane to Sneyd Hall Road	TURN LEFT
GRIT	Sneyd Hall Road to Sneyd Hall Road	TURN LEFT
GRIT	Sneyd Hall Road to Central Drive	TURN RIGHT
GRIT	Central Drive to Sneyd Hall Road	TURN RIGHT
GRIT	Sneyd Hall Road to Sneyd Hall Road	TURN LEFT
TRAVEL	Sneyd Hall Road to A4124	TURN RIGHT
TRAVEL	A4124 Sneyd Lane, Bell Lane to Sand Bank	TURN RIGHT
GRIT	Sand Bank to Wolverhampton Road	TURN RIGHT / STRAIGHT
GRIT	Sand Bank to B4210 Elmore Green Road	TURN LEFT
TRAVEL	B4210 Elmore Green Road to Clarendon Street	TURN LEFT
(Continued...)		

**DEPOT : APEX ROAD
ROUTE NUMBER : 06 (continued)**

GRIT	Clarendon Street to New Street	TURN RIGHT
GRIT	New Street to Marlborough Street	TURN RIGHT
GRIT	Marlborough Street to B4210 Elmore Green Road	TURN RIGHT
TRAVEL	B4210 Elmore Green Road to Croxdene Avenue	TURN LEFT
TRAVEL	Croxdene Avenue to Central Drive	TURN LEFT / STRAIGHT
GRIT	Central Drive to Sneyd Hall Road (1 st of 2)	STRAIGHT
TRAVEL	Central Drive to Sneyd Hall Road (2 nd of 2)	STRAIGHT
GRIT	Central Drive to Ashley Road	TURN LEFT
TRAVEL	Ashley Road to Coalway Road	TURN LEFT
TRAVEL	Coalway Road to Heather Road	TURN LEFT
GRIT	Heather Road to Central Drive	TURN RIGHT
TRAVEL	Central Drive to Chase Road	TURN RIGHT
GRIT	Chase Road to Coalway Road	TURN RIGHT
GRIT	Coalway Road to Moorland Road	TURN LEFT
GRIT	Moorland Road to Willenhall Lane	TURN RIGHT
GRIT	Willenhall Lane to Leamore Lane	TURN RIGHT
GRIT	Willenhall Lane, Wood Lane, Bloxwich Road North to A462	TURN LEFT
TRAVEL	A462 High Road to Mill Lane	TURN RIGHT
TRAVEL	Mill Lane to Lucknow Road	TURN RIGHT
GRIT	Lucknow Road, Coppice Lane to A462	TURN RIGHT
		(Continued...)

**DEPOT : APEX ROAD
ROUTE NUMBER : 06 (continued)**

TRAVEL	A462 Wesley Road, Coltham Road, Straight Road, High Road to Bentley Lane	TURN LEFT
GRIT	Bentley Lane to Bloxwich Lane	TURN LEFT
TRAVEL	Bloxwich Lane to Cavendish Road	TURN RIGHT
GRIT	Cavendish Road to Stephenson Avenue	TURN RIGHT
GRIT	Stephenson Avenue to r/b	TURN LEFT
GRIT	Stephenson Avenue to A34 Green Lane	TURN LEFT
TRAVEL	A34 Green Lane to Green Lane r/b	TURN LEFT
TRAVEL	Leamore Lane to Darwin Road	TURN LEFT
GRIT	Darwin Road to Stephenson Avenue	TURN RIGHT
GRIT	Stephenson Avenue to Bloxwich Lane	TURN RIGHT
TRAVEL	Bloxwich Lane to Leamore Lane	TURN RIGHT
TRAVEL	Leamore Lane to Fryer's Road (on left)	STRAIGHT
GRIT	Leamore Lane to Darwin Road	TURN RIGHT
TRAVEL	Darwin Road to Stephenson Avenue	TURN RIGHT
TRAVEL	Stephenson Avenue to Stephenson Square	TURN LEFT
GRIT	Stephenson Square to Edison Road	TURN LEFT
GRIT	Edison Road to Stephenson Avenue	TURN RIGHT
GRIT	Stephenson Avenue to Cavendish Road	TURN RIGHT
TRAVEL	Cavendish Road to Edison Road	TURN RIGHT
GRIT	Edison Road to Stephenson Square	TURN LEFT
TRAVEL	Stephenson Square to Stephenson Avenue	TURN RIGHT

(Continued...)

**DEPOT : APEX ROAD
ROUTE NUMBER : 06 (continued)**

TRAVEL	Stephenson Avenue to Darwin Road (on left)	STRAIGHT
GRIT	Stephenson Avenue to Edison Road (on right)	STRAIGHT
TRAVEL	Stephenson Avenue to r/b	TURN RIGHT
GRIT	Reedwood Way to Six Towers Road	TURN RIGHT
GRIT	Reedwood Way to Bloxwich Lane r/b	STRAIGHT
TRAVEL	Bloxwich Lane to A454	TURN RIGHT
TRAVEL	A454 Wolverhampton Road to M6/A454 r/b	STRAIGHT
TRAVEL	B4464 Wolverhampton Road West to Bentley Mill Way	TURN LEFT
GRIT	Bentley Mill Way, Cemetery Road to A4038 Walsall Road	TURN RIGHT
TRAVEL	A4038 Walsall Road to Heath Road r/b	TURN RIGHT
GRIT	Heath Road, The Green to A462 r/b	TURN RIGHT
TRAVEL	A462 Midland Road to Willenhall Street	TURN LEFT
GRIT	Willenhall Street to A462 St Lawrence Way r/b	STRAIGHT
TRAVEL	A462 St Lawrence Way r/b to New Street	STRAIGHT
GRIT	New Street to Church Street	TURN RIGHT
GRIT	Church Street, Victoria Road to Bull Street	TURN RIGHT
GRIT	Bull Street to A4038 Walsall Road	TURN RIGHT
TRAVEL	A4038 Walsall Road to A462 Darlaston Road (on left)	STRAIGHT
GRIT	A4038 Walsall Road, Pinfold Street, Moxley Road to A41 r/b	STRAIGHT
TRAVEL	A41 r/b 2 nd exit to A41 High Street	STRAIGHT
GRIT	A41 High Street to A4098	TURN LEFT
GRIT	A4098 Great Bridge Road to Bradley Lane	TURN RIGHT

(Continued...)

**DEPOT : APEX ROAD
ROUTE NUMBER : 06 (continued)**

GRIT	Bradley Lane to boundary	STRAIGHT
TRAVEL	Bradley Lane to Wallace Road	U-TURN
TRAVEL	Bradley Lane to A4098 Great Bridge Road	TURN RIGHT
GRIT	A4098 Great Bridge Road to boundary	STRAIGHT
TRAVEL	A4098 Great Bridge Road to Constantine Way	U-TURN
TRAVEL	A4098 Great Bridge Road to Bull Lane	TURN RIGHT
GRIT	Bull Lane to A41	TURN LEFT
TRAVEL	A41 to A41/A4444/A4038 r/b	TURN RIGHT
TRAVEL	A4038 Moxley Road to start of dual c-way section	STRAIGHT
GRIT	A4038 Moxley Road to end of dual c-way section	STRAIGHT
TRAVEL	A4038 Pinfold Street to St Lawrence Way (on left)	STRAIGHT
GRIT	A4038 Walsall Road to A462 Darlestone Road	STRAIGHT
TRAVEL	A4038 Walsall Road to Old Park Road	TURN RIGHT
GRIT	Old Park Road to boundary	U-TURN
TRAVEL	Old Park Road to Franchise Street	TURN RIGHT
GRIT	Franchise Street to B4200	TURN LEFT
GRIT	B4200 Park Lane to A4038 r/b	TURN RIGHT
TRAVEL	A4038 Walsall Road to Heath Road/Walsall Road r/b	TURN LEFT
TRAVEL	Heath Road to Station Street	TURN LEFT
GRIT	Station Street to Bull Street	TURN RIGHT
TRAVEL	Bull Street to Victoria Road	TURN RIGHT
		(Continued...)

**DEPOT : APEX ROAD
ROUTE NUMBER : 06 (continued)**

GRIT	Victoria Road to Richards Street/The Flatts r/b	TURN LEFT
GRIT	Richards Street, Bentley Road South to Willenhall Road (on left)	U-TURN
TRAVEL	Bentley Road South to The Green	TURN RIGHT
TRAVEL	The Green to The Green r/b	TURN LEFT
TRAVEL	A462 The Green to Addenbrooke Street	TURN RIGHT
GRIT	Addenbrooke Street, Rough Hay Road to Hall Street	TURN LEFT
GRIT	Hall Street to Wolverhampton Street	TURN LEFT
GRIT	Wolverhampton Street to Stafford Road	TURN LEFT
GRIT	Stafford Road to Willenhall Street	TURN RIGHT
TRAVEL	Willenhall Street to A462 St Laurence Way r/b	U-TURN
TRAVEL	Willenhall Street to Stafford Road	TURN LEFT
TRAVEL	Stafford Road to Wolverhampton Street	TURN LEFT
GRIT	Wolverhampton Street to Park Street	TURN RIGHT
GRIT	Park Street to Willey Avenue	TURN RIGHT
GRIT	Willey Avenue to Heathfield Lane	STRAIGHT
GRIT	Park Road to Forge Road	TURN RIGHT
GRIT	Forge Road to Wolverhampton Street	TURN RIGHT
TRAVEL	Wolverhampton Street to Park Street (on right)	STRAIGHT
GRIT	Wolverhampton Street to A4038	TURN RIGHT
GRIT	A4038 Moxley Road to Dangerfield Lane	TURN LEFT
GRIT	Dangerfield Lane to Woden Road West	TURN LEFT

(Continued...)

**DEPOT : APEX ROAD
ROUTE NUMBER : 06 (continued)**

TRAVEL	Woden Road West to A462 Darlaston Road	TURN LEFT
GRIT	A462 Darlaston Road to A4038 Walsall Road	TURN RIGHT
TRAVEL	A4038 Walsall Road to Ave Road	TURN LEFT
GRIT	Ave Road to Bull Street	TURN LEFT
TRAVEL	Bull Street to Victoria Road	TURN LEFT
TRAVEL	Victoria Road to New Street (on left)	STRAIGHT
GRIT	Church Street to A462	TURN RIGHT
TRAVEL	A462 Blockall Close to Addenbrooke Street	TURN LEFT
TRAVEL	Addenbrooke Street, Rough Hay Way to Willenhall Street	TURN RIGHT
TRAVEL	Willenhall Street to Hall Street East	TURN LEFT
GRIT	Hall Street East to Rough Hay Road	STRAIGHT
TRAVEL	Hall Street to Wolverhampton Street	TURN RIGHT
GRIT	Wolverhampton Street to Wrenbury Drive (on left)	
End of Route. Return to Depot.		



Town and District centres **Footway Treatment Routes**

Walsall Town Centre – Hand Gritting

Footway gritting route No. 1

Road	Instruction / Direction
<u>START GRITTING</u> STAFFORD ST JUNCTION OF LITTLETON ST TOWNEND SQUARE ST PAULS STREET TO HATHERTON ROAD HATHERTON ROAD TO LICHFIELD ST	PROCEED TO TURN INTO TURN LEFT RETURN TO
<u>STOP GRITTING</u> HATHERTON STREET <u>START GRITTING</u> HATHERTON STREET TO LITTLETON ST LITTLETON STREET TO LOWER FORSTER ST LOWER FORSTER ST TO HATHERTON ROAD HATHERTON ROAD TO LICHFIELD ST LICHFIELD ST TO JUNCTION OF BROADWAY	 TURN RIGHT TURN RIGHT TURN LEFT TURN LEFT
<u>STOP GRITTING</u> LICHFIELD ST JUNCTION HATHERTON ROAD <u>START GRITTING</u> LICHFIELD ST TO LEICESTER ST LICHFIELD STREET DARWALL ST TO BRIDGE ST DARWALL ST TO HATHERTON ST DARWALL TO TOWER STREET TOWER ST TO LICHFIELD ST	 RETURN TO PROCEED TO TURN RIGHT TURN LEFT TURN AROUND TURN AROUND TURN LEFT
<u>STOP GRITTING</u> LICHFIELD ST JUNCTION BRIDGE ST <u>START GRITTING</u> BRIDGE ST TO ST PAULS ST ST PAULS ST TO BUTLERS PASSAGE BUTLERS PASSAGE PARK ST WISEMORE MARSH ST TO STATION ST STATION ST TO PARK ST STATION ST TO BRIDGEMAN ST BRIDGEMAN ST TO BRADFORD PLACE BRADFORD PLACE TO BRADFORD ST BRADFORD ST TO VICARAGE PLACE	 PROCEED TO INTO TURN LEFT TURN RIGHT PROCEED TO TURN LEFT TURN LEFT TURN AROUND TURN LEFT TURN RIGHT TURN RIGHT TURN AROUND
<u>STOP GRITTING</u> BRADFORD ST JUNCTION BRADFORD PLACE <u>START GRITTING</u> BRADFORD PLACE BRADFORD ST THE BRIDGE BRIDGE ST <u>STOP GRITTING</u>	 PROCEED TO PROCEED TO PROCEED TO

Walsall Town Centre – Hand Gritting

Footway gritting route No. 2

Road	Instruction / Direction
<u>START GRITTING</u>	
LOWER RUSHALL ST AT JUNCTION OF BROADWAY	PROCEED ALONG
LOWER RUSHALL ST TO WHITTIMERE ST	TURN RIGHT
WHITTIMERE ST TO INTOWN ROW	
GRIT ALL INTOWN ROW	RETURN TO
LOWER RUSHALL ST	TURN RIGHT
LOWER RUSHALL ST TO WAREWELL ST	TURN LEFT
WAREWELL ST TO UNION ST	TURN RIGHT
UNION ST TO PADDOCK LANE	TURN RIGHT
PADDOCK LANE TO BALL ST	TURN RIGHT
BALL ST TO WAREWELL ST	TURN AROUND, RETURN TO
PADDOCK LANE	TURN RIGHT
PADDOCK LANE TO ABLEWELL ST	TURN RIGHT
ABLEWELL ST TO TANTARRA ST	TURN LEFT
TANTARRA ST ABLEWELL ST	TURN LEFT
ABLEWELL ST TO BOTT LANE	TURN LEFT
BOTT LANE TO UNION ST	TURN LEFT
UNION ST TO PADDOCK LANE	TURN LEFT
<u>STOP GRITTING</u>	PROCEED ALONG
PADDOCK LANE TO ABLEWELL ST	TURN LEFT
<u>START GRITTING</u>	
UPPER RUSHALL ST	PROCEED TO
PEAL ST	PROCEED TO
DUDLEY ST TO JUNCTION OF UPPER HALL LANE	FOLLOW
UPPER HALL LANE TO CALDMORE ROAD	TURN LEFT
CALDMORE ROAD TO DUDLEY ST	
<u>STOP GRITTING</u>	RETURN TO
CALDMORE ROAD JUNCTION UPPER HALL ST	
<u>START GRITTING</u>	
CALDMORE RD JUNCTION UPPER HALL LANE TO JUNCTION LOWER HALL LANE	PROCEED TO
LOWER HALL LANE TO END	TURN RIGHT
<u>STOP GRITTING</u>	TURN AROUND AND PROCEED TO
JUNCTION NEWPORT ST	TURN RIGHT
<u>START GRITTING</u>	
NEWPORT ST TO LITTLE NEWPORT ST	TURN LEFT
LITTLE NEWPORT ST TO END	
<u>STOP GRITTING</u>	TURN AROUND AND RETURN TO
NEWPORT STREET	TURN LEFT
<u>START GRITTING</u>	
NEWPORT ST TO BRADFORD ST	
<u>STOP GRITTING</u>	TURN LEFT AND PROCEED TO
BRADFORD ST JUNCTION WITH CALDMORE ROAD	

<u>START GRITTING</u> CALDMORE ROAD TO BRADFORD LANE BRADFORD LANE TO VICARAGE PLACE VICARAGE PLACE TO MOUNTRATH ST MOUNTRATH ST TO CALDMORE ROAD CALDMORE TO VICARAGE PLACE VICARAGE PLACE TO JUNCTION BRADFORD ST <u>STOP GRITTING</u> DUDLEY ST JUNCTION GEORGE ST <u>START GRITTING</u> GEORGE ST TO HIGH ST HIGH ST TO GOODALL ST GOODALL ST TO BRIDGE ST <u>STOP GRITTING</u> GOODALL ST JUNCTION FREER ST <u>START GRITTING</u> FREER ST TO UPPER BRIDGE ST UPPER BRIDGE ST TO LOWER RUSHALL ST <u>STOP GRITTING</u>	TURN RIGHT TURN LEFT TURN LEFT TURN RIGHT TURN RIGHT TURN AROUND AND PROCEED TO TURN LEFT TURN RIGHT TURN LEFT TURN AROUND AND RETURN TO TURN RIGHT TURN RIGHT
---	--

Darlaston Town Centre – Hand Gritting

Footway gritting route No. 3

Road	Instruction / Direction
<u>START GRITTING</u>	
NEW STREET JUNCTION OF CHURCH STREET	PROCEED TO
JUNCTION OF ST LAWRENCE WAY	TURN LEFT
ST LAWRENCE WAY TO JUNCTION PINFOLD STREET	TURN RIGHT
PINFOLD STREET TO END OF SHOPS	TURN AROUND
PINFOLD STREET TO KING STREET PRECINCT	TURN LEFT
KING STREET PRECINCT TO THE FOLD	TURN LEFT
THE FOLD	TURN LEFT
KING STREET PRECINCT TO NEW STREET	TURN RIGHT
VICTORIA ROAD TO SLATER STREET	TURN AROUND
RETURN TO JUNCTION OF CRESCENT ROAD AND VICTORIA ROAD	TURN LEFT
CRESCENT ROAD TO PICTUREDROME WAY	TURN RIGHT
PICTUREDROME WAY TO INCLUDE ALLEY WAY	
FROM PICTUREDROME WAY TO KING STREET PRECINCT	TURN RIGHT
CRESCENT ROAD TO WALSALL ROAD	TURN LEFT
WALSALL ROAD TO END OF SHOPS	
<u>STOP GRITTING</u>	

Willenhall Town Centre – Hand Gritting

Footway gritting route No. 4

Road	Instruction / Direction
<u>START GRITTING</u> WAKES GROUND CAR PARK WALSALL ST TO JUNCTION OF BATH ST WALSALL STREET TO BILSTON ST BILSTON STREET TO END OF SHOPS NEW ROAD TO END OF SHOPS BUS STOP AT END OF MARKET PLACE MARKET PLACE TO JUNCTION WOLVERHAMPTON STREET WOLVERHAMPTON STREET TO JUNCTION OF GOMER STREET GOMER ST TO HEALTH CENTRE	PROCEED TO TO END AND RETURN TURN LEFT RETURN RETURN TURN LEFT TURN LEFT TURN RIGHT RETURN TO
<u>STOP GRITTING</u> JUNCTION WOLVERHAMPTON STREET AND MARKET PLACE	TURN LEFT
<u>START GRITTING</u> STAFFORD STREET (TO INCLUDE ALL ALLEYWAYS) TO TEMPLE BAR ISLAND	
<u>STOP GRITTING</u> STAFFORD STREET TO JUNCTION OF UNION STREET	RETURN TO TURN LEFT
<u>START GRITTING</u> UNION ST TO JUNCTION OF LICHFIELD ST LICHFIELD ST TO JUNCTION OF CLEMSON STREET CLEMSON ST TO END LOWER LICHFIELD ST LOWER LICHFIELD ST TO JUNCTION LICHFIELD ST LICHFIELD ST TO ANGEL PASSAGE ANGEL PASSAGE TO MARKET PLACE MARKET PLACE TO PASSAGEWAY PASSAGEWAY TO LICHFIELD ST LICHFIELD ST TO CROSS ST CROSS ST TO MARKET PLACE LICHFIELD ST LICHFIELD ST TO JUNCTION OF WALSALL ST	TURN RIGHT TURN LEFT TURN LEFT, PROCEED TO TURN RIGHT TURN RIGHT TURN LEFT TURN LEFT TURN LEFT TURN LEFT TURN LEFT RETURN TO TURN RIGHT
<u>STOP GRITTING</u>	

Bloxwich Town Centre – Hand Gritting

Footway gritting route No. 5

Road	Instruction / Direction
<u>START GRITTING</u>	
THE PINFOLD BY HEALTH CENTRE	PROCEED TO
HIGH STREET	TURN RIGHT AND PROCEED TO
ALONG HIGH STREET TO JUNCTION	
PARK ROAD	PROCEED ALONG
PARK ROAD TO JUNCTION TO	
JUNCTION CEMETERY WAY	TURN RIGHT
CEMETERY WAY TO END	RETURN TO
JUNCTION PARK ROAD	TURN RIGHT
PARK ROAD TO JUNCTION OF	TURN LEFT
LICHFIELD ROAD	
LICHFIELD ROAD TO JUNCTION OF	TURN LEFT
HIGH STREET	
HIGH STREET TO JUNCTION OF	TURN RIGHT
WOLVERHAMPTON ROAD	
WOLVERHAMPTON ROAD TO SAMUEL	TURN LEFT
ST	
SAMUEL ST TO JUNCTION HIGH	TURN RIGHT
STREET	
HIGH STREET TO JUNCTION MARKET	TURN INTO
PLACE	
MARKET SQUARE, GRIT MARKET	
SQUARE (INCLUDING WALK WAY TO	TURN RIGHT INTO
ELMORE ROW CAR PARK)	PROCEED TO
ELMORE ROW	TURN LEFT
JUNCTION TO ELMORE GREEN	TURN AROUND PROCEED TO
ELMORE GREEN TO JUNCTION HIGH	
STREET	
CHURCH MOAT WAY JUNCTION	
ELMORE GREEN	TURN RIGHT
CHURCH MOAT WAY TO JUNCTION	
ELMORE ROAD	TURN RIGHT
ELMORE ROW TO HIGH STREET	
<u>STOP GRITTING</u>	

Brownhills Town Centre – Hand Gritting

Footway gritting route No. 6

Road	Instruction / Direction
<u>START GRITTING</u>	
SILVER STREET JUNCTION HIGH ST	PROCEED ALONG
SILVER STREET TO HIGH STREET	TURN LEFT
HIGH ST TO MARKET PLACE	TURN LEFT
MARKET PLACE	TURN LEFT
HIGH STREET TO RAVENSCROFT (TO INCLUDE ALL PASSAGEWAYS)	TURN INTO
RAVENSCROFT AND GRIT	
RAVENSCROFT INCLUDING STEPS TO CAR PARK	RETUN TO
HIGH STREET	TURN LEFT
HIGH STREET TO ISLAND	TURN AROUND
HIGH STREET TO CHURCH ROAD	TURN LEFT
CHURCH ROAD TO SHORT STREET	TURN LEFT
SHORT STREET TO GREAT CHARLES STREET	TURN AROUND
SHORT STREET TO BRICKLIN STREET	TURN RIGHT
BRICKLIN STREET TO HIGH STREET	
<u>STOP GRITTING</u>	

Aldridge Town Centre – Hand Gritting

Footway gritting route No. 7

Road	Instruction / Direction
<u>START GRITTING</u> ROOKERY LANE JUNCTION PORTLAND ROAD PORTLAND ROAD TO LIBRARY LIBRARY TO MAGISTRATES COURT ROOKERY LANE ROOKERY LANE TO LITTLE ASTON ROAD LITTLE ASTON ROAD TO ANCHOR ROAD HIGH STREET TO END INCLUDING BAKERS LANE <u>STOP GRITTING</u> LEIGHSWOOD ROAD <u>START GRITTING</u> LEIGHSWOOD ROAD INFRONT OF SHOPS JUNCTION OF ANCHOR ROAD BYPASS AND ANCHOR ROAD ANCHOR ROAD TO PORTLAND ROAD PORTLAND ROAD TO ROOKERY LANE <u>STOP GRITTING</u>	PROCEED ALONG TURN RIGHT TURN AROUND AND RETURN TO TURN LEFT TURN LEFT TURN LEFT TURN AROUND AND PROCEED TO TURN AROUND AND PROCEED TO TURN RIGHT TURN LEFT

Pelsall High Street – Hand Gritting

Footway gritting route No. 8

Road	Instruction / Direction
<u>START GRITTING</u> HIGH STREET JUNC CHAPEL STREET TO JUNCTION HIGHFIELD ROAD TO JUNCTION OLD TOWN LANE <u>STOP GRITTING</u>	PROCEED ALONG TURN LEFT

Salt Bins

Salt bins are provided for use on the public highway in locations not treated as part of the precautionary salting route treatment.

Salt bins are located in areas where residents can gain access to salt stocks for the treatment of their road and pavement. Salt bin stocks are not for use on private property.

Requests for salt bins will be assessed against the criteria detailed within this plan. Only those locations meeting the criteria will be considered for the placement of a salt bin.

Salt bins will be regularly monitored for stock levels and will be replenished as soon as practicable. However, priority will always be given to the precautionary treatment of the defined winter treatment network should there be a need to conserve resources. During any national salt shortage a mixture of salt/grit will be used for replenishment of salt bins due to the need to conserve salt for the strategic route network

For environmental reasons, salt stocks will only be deposited at the roadside in approved salt bins.

LOCATION OF SALT BINS

Subject to in year variations

1	Barr Common Road - Junc Longwood Rd, Aldridge - opp no 42
2	Barr Common Close - on grass verge, Aldridge
3	Erdington Road, Streetly - side no 119 in Hayfield Grove
4	Lawson Close, Aldridge - o/s no 21
5	Charlesdale Drive, Aldridge - o/s no 1
6	Ridgeway, Aldridge - o/s no 22
7	Vale View, Aldridge
8	Beaufort Way, Aldridge
9	Whetsone Lane, Aldridge - o/s no 233
10	Churnhill Road, Aldridge o/s shops
11	Walsall Road Junc Station Road, Aldridge
12	Berryfields Junc Linley Wood Road, Aldridge
13	Greenwood Road/Hillside, Aldridge - Junc of Hill View
14	Willenhall Lane, Bloxwich
15	Beatrice Street, Bloxwich - Junc Green Lane
16	Broad Lane, Bloxwich (on embankment opp 112 Tintern crescent)
17	Ambergate Close, Bloxwich - outside no 6
18	Selmans Hill, Bloxwich - opp no 54
19	Stoney Lane, Bloxwich - opp no 73
20	Stoney Lane, Bloxwich - opp no 143
21	Stoney Lane, Bloxwich - Junc Millfield Avenue
22	Byeways, Bloxwich - (side of 93 Stoney Lane)
23	Livingston Road, Bloxwich - Junc Green Rock Lane
24	Harden Road, Goscote (on Coalpool bridge opp 258 Harden Road)

Draft Version 1 October 2015

25	Mill Place, Harden (o/s 1 Mill Place, Junc Coalpool Lane)
26	Raymond Close, North Walsall - opp no 8
27	Sneyd Lane - Junc Crab Lane, Willenhall
28	Latimer Street, Willenhall - side of no 13
29	The Crescent, Willenhall (end of Fletchers Lane)
30	The Crescent, Willenhall - Right side of Robin Hood Garage
31	Straight Road, Willenhall (s/o 48 Straight Road)
32	Bilston Street, Willenhall - on bridge before Rosehill Gardens s/o LP14)
33	Monmore Lane, Willenhall - on bridge before the garage
34	Albion Road, Willenhall - side of no 48
35	Sandbeds Road , Willenhall - o/s Cenataph junc High Road
36	Somerford Place, Willenhall - before the bridge on right
37	Pinson Road, Willenhall - R.H. side of Middleton paper entrance)
38	Coppice Lane, Willenhall - opp Amery Club
39	Coltham Road, Willenhall - Junc Wood Lane (Opp Bains Off Licence)
40	Gough Street, Willenhall - Junc o/s 74 Stringes Lane
41	Bridgnorth Grove, Willenhall - opp no 2
42	Stirling Crescent, Willenhall - opp no 23 junc of The Hayes
43	Stirling Crescent, Willenhall - Junc side of 25 The Hayes
44	Banks Street, Willenhall - Junc Ames Street (End Of Belinda Close)
45	Leamore Lane, Bloxwich - Junc Reaymear Close
46	Cedar Avenue, Brownhills
47	Chase Road, Brownhills
48	Short Street, Brownhills - o/s St James House
49	Castle Street, Brownhills - Junc Castle Close
50	Tamworth Close, Brownhills - o/s The Flats
51	Marklew Close, Brownhills
52	St Johns Road, Brownhills - o/s no 18
53	Knaves Castle Avenue, Brownhills
54	Lichfield Road, Sandhills, Brownhills - opp no 2
55	Lichfield Road, Sandhills, Brownhills - opp no 52
56	Lichfield Road, Sandhills, Brownhills - opp no 84
57	Lichfield Road- s/o 162, Brownhills - Junc Shire Ridge
58	Valley View, Brownhills - Junc Catshill Road - opp Millfield Primary
59	Simmonds Place, Brownhills - Junc Hillside
60	Hillside, Brownhills junc Friezland Lane - LP 19
61	New Road, Brownhills - Junc Church road opp 38
62	Bridge Street, Clayhanger Junc High Street
63	Maybrook Road, Walsall Wood - o/s Unit 21 (opp Heath Yards)
64	Maybrook Road, Walsall Wood Junc Coppice Road
65	Maybrook Road, Walsall Wood -o/s Frieght Terminal (Frans Mass yard)
66	Boatmans Lane, Walsall Wood - Lathams Bridge near Binary House
67	High Street, Walsall Wood - o/s St Johns Medical Centre
68	Licfield Road, Walsall Wood - Junc Coppice Road by bus shelter
69	Camden Street Nxt to 38, Walsall Wood - junc black cock bridge
70	Blakemore Road, Walsall Wood - Junc Druids Walk
71	Castlefort Road, Walsall Wood - Junc Fort Crescent
72	Hollands Way, Walsall Wood
73	Leyland Croft on RBT
74	New Street, Shelfield
75	Fordbrook Lane, High Heath - opp no 73
76	Hawthorne Road, Shelfield - Junc Lichfield Road

77	Clockmill Road, Pelsall - Junc Clcokmill Avenue
78	Walsall Road , Rushall - Pelsall Lane - opp no 2
79	New Street, Rushall - Junc Rowley Place (Rushall Mews)
80	Aldridge Road, Walsall - opp Airport Entrance
81	West Bromwich Road, Walsall - next to lamp column 16 (opp 250)
82	Caldmore Road, Walsall - Nest to lamp column 8 - opp no 54
83	Glebe Street, Walsall - o/s Social Security Building
84	Bridgeman Street, Walsall - opp Station Street
85	Vicarage Walk, Caldmore, Walsall - near to no 13
86	Charlemont Road, Walsall - Junc Camberra Road
87	Skip Lane, Walsall - Junc Brackenwood Road
88	Reaburn Road, Pheasey - o/s Pheasy Park Primary school
89	Wimpress Way, Pheasey - Junc Beacon Road
90	Beechy Close,Pheasey - o/s no 1
91	Linton Road, Pheasey - o/s no 12
92	Kinross Crescent, Pheasey - Junc Berwick Close
93	Aviemore Crescent, Pheasey o/s no33
94	Garnet Avenue, Pheasey - o/s no 1
95	Stonehurst Road -o/s no 86, Pheasey - opp Selvey Road
96	Pinley Grove, Pheasey - o/s no 2
97	Comsey Road, Pheasey - o/s no 34
98	Crail Grove, Pheasey
99	Dunbar Grove, Pheasey - o/s no 1
100	Nevison Road, Pheasey - Junc of Waverley Road
101	Beacon Rd, Pheasey - on verge in service Rd Junc Hillingford Rd
102	Queslett Road, Pheasey - opp no 226
103	Queslett Road, Pheasey - opp Allingham Grove - on verge
104	Farrier Road, Pheasey - o/s no 28 Junc Crome Road
105	Horsley Road, Pheasey - o/s no 1
106	Tyndale Crescent, Pheasey - opp no 74
107	Beacon Road, Pheasey - opp Bridle Lane - in bus layby
108	Pomeroy Road, Pheasey - o/s no 59
109	Ivanhoe Road, Pheasey - o/s no 49
110	Hillingford Avenue, Pheasey -Junc Horsley Road o/s no 32
111	Carlton Avenue, Pheasey - Junc Carlton Croft
112	Leighton Close, Pheasey - o/s no 16
113	Inglewood Grove- Junc Wood Lane, Streetly
114	Foley Road West, Streetly - o/s Foley Arms Pub
115	Foley Road West, Streetly - opp Hazelwood Road
116	Bankside Crescent, streetly Junc Hundred Acre Road
117	Nighwood Drive - Junc Laneside Avenue, Streetly
118	Hazelwood Road, Streetly - Junc Limetree Road
119	Hazelwood Road, Streetly - Junc Cedar Road
120	Planetree Road, Streetly - Junc Yewtree Road opp 22
121	Lime Tree Road, Streetly - Junc Beechcroft Crescent o/s no 3
122	Lime Tree Road, Streetly - Junc Beechcroft Crescent o/s no 68
123	Pinetree Drive, Streetly Junc Whitethorn Crescent o/s no 28
124	Elmtree Road, Streetly - Junc Cherrywood Road o/s no 3 Elmtree
125	Boundary Road, Streetly s/o no 2 - Junc Goodwood Drive
126	Pargeter Street / Wolverhampton Road
127	Adridge Road, Streetly
128	Longwood Road / Beacon Hill Junc Traffic Lights

129	Beacon Hill, Streetly - opp Chevrons on verge
130	Sutton Road, Streetly - at the Beacon Traffic Lights
131	Pinfold Lane, Streetly - opp Crook Lane on verge
132	Yewtree Road, Streetly - Junc Elmtree Road opp 74
133	Elmstead Close - opp no 1 - Junc Downham close, Walsall
134	Sutton Road, Walsall - o/s no 497
135	Broadway North, Walsall - opp no 36
136	Newquay Road, Park Hall, Walsall - opp Newquay Close
137	St Ives Road, Park Hall, Walsall - Junc Newquay Road s/o no 9
138	Burnside Gardens, Park Hall, Walsall Junc Lodge Rd o/s no 30
139	Woodside Road / Calthorpe RBT, Park Hall, Walsall
140	Redruth Road, Park Hall, Walsall - opp no 43
141	Wolverhampton Street, Darlaston - op Staffordshire Knott Pub
142	Victoria Road, Darlaston - op Victoria House
143	Phoenix Rise, Darlaston - side of no 3
144	Rollingmill Street, Walsall -right side of Cemetary entrance
145	Bescot Crescent - opp no 1, Walsall - Junc Wednesbury Road
146	Intown Row - opp 5TH Battalion - club (on carpark f/w), Walsall
147	High Street, Walsall - Junc Goodall Street
148	Warewell Street, Walsall - Junc Balls Hill
149	Lysway Street, Walsall - Junc Hanch Place
150	Upper Rushall Street, Walsall - o/s car park - Lyndon House
151	New Street, nxt to LP 1, Walsall
152	Union Street, Walsall - opp Millsum House Flats
153	The Pines, Walsall - Junc Emery Close
154	Birmingham Rd , Walsall - opp Merrions Close (on f/w)
155	Birmingham Road, Walsall - opp Skip Lane (on f/w)
156	Bentley Place - s/o 10 Bentley Drive
157	Bentley Drive o/s 68 - Junc Edward street - Bentley New Lane
158	Sherlock Close - Junc Lowbridge Close o/s Neighbourhood office, Willenhall
159	Leighton Road - s/o 44 Great Bridge Road, Moxley
160	Belvedere Road, Walsall - opp no 2
161	Heath Acre
162	Darlington Street - opp no 6, Junc New Cross Street
163	Highgate Road - Junc Sandwell Ave
164	Roberts Road, Coalpool o/s no 9
165	Whitmere Street, Junc New Mills Street
166	Hollyoak Road, Sutton Coldfield - opp no 7
167	Foxwood Avenue, Birmingham - o/s 4
168	Lawson Close, Aldridge, Walsall - opp no 5
169	Westville Road, Walsall - o/s no 4
170	Chepstow Road, Bloxwich
171	Cotswold Grove, Willenhall
172	Quantock Close, Brownhills
173	Lowlands Avenue, Streetly - Junc with Lilac Ave -s/o 72 Lowlands, Blackwood Ave - o/s 5 Lowlands Ave, Aldridge Road
174	Selvey Avenue, Streetly

175	Old Lindons Close Streetly
176	Pinfold Court Darlaston
177	Helston Rd junction Cambourne Road
178	Lincoln Rd junction Princess Avenue
179	Hatherton Road Multi Storey Car Park x 2
180	Hatherton St Car Park near WHG Building
181	Marwood Croft junction Carlton Avenue Streetly
182	Hilton Road Allens Centre
183	Wayside Gdns junction Furzebank Way
184	191a Broadway Safer working partnership
185	Hillcrest Gdns junction Longwood Rise Willenhall
186	Countess Street
187	Daw End Lane junction Lime Grove
188	Laurel Drive junction Mullberry Walk
189	Laurel Drive junction Maxholm Road
190	Lichfield Street side of Library
191	Featherstone Road junction Hardwick Road
192	St Austell Road junction penryn Road
193	Wallows Lane opp 148
194	Beechcroft Crescenty opp no3
195	Beechcroft Crescent adj to no 49
196	Streetly Crem
197	Bloxwich Cemetery
198	Willenhall Lawn Cemetery
199	Ryecroft Cemetery
200	Field Road junction Victoria Ave
201	Longwood Rise junction Hillcrest Gdns
202	Highgate Road junction Avion Road
203	Dolphin Close
204	Foley Road East
205	Netherall Park Estate
206	Co-op New Invention
207	Co-op Pelsall
208	Barcroft
209	Paddock Lane
210	Little London
211	Blithfield Road
212	Wood Lane junction Forge Lane
213	Blue Cedar Drive
214	Field Maple Drive
215	Earl St
216	Penryn Rd
217	Thistledown Close
218	Pommel Close
219	Norfolk New road
220	Well Lane Junction Walker Road
	LIBRARIES
221	Willenhall
222	Pleck
223	Bloxwich
224	Beechdale
225	Darlaston
226	Walsall wood
227	Streetly
228	South Walsall
229	Rushall
230	Pheasey
231	New Invention

	Schools
232	St Giles
233	Woodlands
234	Pelsall Village

DRAFT

SALT BIN REQUEST ASSESSMENT FORM

(For use with new requests only existing salt bin locations to remain)

Road Name _____

Name of Assessor _____

Location _____

Requested By _____

Ward _____

Date of Assessment _____

1. Gradient of Carriageway

Greater than 1 in 10	100	
1 in 10 to 1 in 15	50	
1 in 16 to 1 in 30	30	
Less than 1 in 30	Nil	

2. Carriageway Horizontal Alignment

Bend < 100m Radius	60	
Bend < 250m Radius	20	
Bend > 250m Radius	Nil	

3. Close Proximity (25m) and Falling Towards

A road	90	
B road	75	
Classified unnumbered road	50	
Unclassified road	30	

4. Number of Premises for Which Only Access (cul-de-sac)

Over 50	30	
20 to 50	20	
0 to 20	Nil	

TOTAL SCORE _____ (min 200 required)

SALT BIN APPROVED - YES / NO

Snow Champions

Volunteer snow champions will be recruited from fit and active people with an interest in helping their local community. They will be provided with good practice advice and equipped to undertake snow and ice clearance from footpaths and walkways in their local community.

The Council will provide a high visibility vest, gloves, 30kg of salt and snow shovel to help them and their neighbours to maintain access to property and local community facilities when weather conditions are poor.

General advice provided to Snow champions:

- There's no law to prevent you from clearing snow and ice on the footpaths outside your property or public spaces but anyone clearing footways should be careful, use common sense and not do anything which would make the footway more dangerous to use.
-
- Your safety is of paramount importance so always wear your high visibility vest, warm clothing and sturdy footwear when undertaking snow clearance.
- Only clear snow from pavements and footways; do not clear snow from any roads.
- Always face oncoming traffic when working near a carriageway.
- If you are working alone, always tell a friend or relative where you are and when you are likely to return.
- If you can, start to clear the snow before it's compacted by people walking on it.
- Always bend your knees and not your back when shoveling snow.
- Spread salt as you progress to stop ice forming on the area you have cleared.
- Think carefully about where you pile snow; do not block driveways, drainage channels and never place it in the road.
- Do not use water to melt snow and ice, this will just re freeze and make the pathway more slippery.
- Always take regular breaks as snow clearance is hard work.
- Always wear your gloves to prevent salt contamination on your hands and pay particular attention to avoid salt contact with your eyes.
- Should you run out of salt, your tubs can be refilled from any of the roadside salt bins but always wear your snow champion reflective vest when doing so.

Communications

The provision of timely and accurate information about current and predicted road network conditions is vital in assisting the travelling public with their journey planning decisions.

The Council will provide regular updates through a range of social media, its corporate Web site and through variable message signs located at strategic points on the road network.

Motorists are advised to be prepared for the worst, and always consider if the journey is essential prior to departure. When the journey is essential, motorists are advised to check the weather conditions first and if possible plan their journey around parts of the road network subject to treatment.

Information on current adverse weather conditions and the council winter service response to those conditions can be found on the following link:

http://cms.walsall.gov.uk/index/transport_and_streets/highway_maintenance/winter_service.htm

Public Self Help

Guidance has been published by the Department for Transport on how the public can assist their communities in clearing snow and ice without fear of litigation. This useful information can be found on the following link:

http://webarchive.nationalarchives.gov.uk/20121015000000/http://www.direct.gov.uk/en/NI1/Newsroom/DG_191868

Decision Making Procedure

Decision makers will determine and coordinate the Council response to winter weather conditions. The decision maker will review the weather forecast information, data available from weather stations located within the borough and the recommended treatment response contained within the code of practice.

All decision making is accurately recorded to aid learning and development for decision makers whilst providing an audit trail of the council's winter service response.

SAMPLE DECISION MAKING PROCEDURE

(FOR GUIDANCE ONLY)

PREDICTED ROAD CONDITIONS	ROAD SURFACE TEMPERATURE	May fall Below freezing	Expected to fall below freezing – See Note (E)				
	PRECIPITATION ETC.	<u>No</u> rain <u>No</u> hoar frost <u>No</u> fog	<u>No</u> rain <u>No</u> hoar frost <u>No</u> fog	<u>expected</u> hoar frost <u>expected</u> fog	<u>expected</u> rain <u>before</u> freezing	<u>expected</u> rain <u>during</u> freezing	<u>Possible</u> rain <u>Possible</u> hoar frost <u>Possible</u> Fog
Dry		1	1	1	3 See Note (C)	1 See Note (D)	1
Wet		2 See Note (A)	2 See Note (A)	2 See Note (B)	3 See Note (C)	1 See Note (D)	1
Wet Patches		6 See Note (A)	6 See Note (A)	1 See Note (B)	3 See Note (C)	1 or 5 See Note (D)	6
Pre-salted within last 24 Hours with no rain since		6 See Note (A)	6 See Note (A)	4 See Note (A)	3 See Note (C)	1 or 5 See Note (D)	5
ACTION <ol style="list-style-type: none"> 1. Salt before frost 2. Salt wet patches before frost 3. Salt after rain stops 4. Supervisor inspect 5. Supervisor inspect with crews standing by in depot for instructions 6. No Action <p>For Notes see paragraph H2.1 All decisions require Continuous monitoring Recording and review</p>							

*Constant vigilance may be required in certain conditions

Note A

Particular attention should be given to the possibility of water running across carriageways and other running surfaces e.g., off adjacent fields after heavy rains, washing off salt previously deposited. Such locations should be closed monitored and may require treating in the evening and morning, and possible other occasions.

Note B

When a weather warning contains reference to expected hoar frost considerable deposits of frost are likely to occur. Hoar frost usually occurs in the early morning and is difficult to cater for because of the probability that any salt deposited on a dry road too soon before its onset may be dispersed before it can become effective. Close monitoring is required under this forecast condition which should ideally be treated just as the frost is forming. Such action is usually not practicable and salt may have to be deposited on a dry road prior to and as close as possible to the expected time of the condition. Hoar frost may be forecast at other times in which case the timing of salt operation should be adjusted accordingly.

Note C

If, under these conditions, rain has not ceased by early morning, crews should be called out and action initiated as rain ceases.

Note D

Under these circumstances rain will freeze on contact with running surfaces and full pre-treatment should be monitored closely and continuously throughout the danger period.

Note E

Weather warnings are often qualified by altitudes, in which case differing action may be required from each depot. Not applicable to Walsall.

Sample Duty Officer Daily Record Sheet

Name:

Date:

Duty Officer:

Forecast and Decision Record

Morning Summary

Time of Issue:

Forecaster's Name:

Forecast Summary	RAG	MIN RST	MIN AIR	TIME RST <0°
Action:				

24 Hour Detailed

Time of Issue:

Forecasters Name:

Forecast Summary	RAG	MIN RST	MIN AIR	TIME RST <0°
Action:				

5 day Summary:

Action:

Sample Duty Officer Daily Record Sheet continued

Evening Summary

Time of Issue:

Forecaster's Name:

Forecast Summary	RAG	MIN RST	MIN AIR	TIME RST <0°
Action:				

Site Specific Forecast

Site	Time	Temp <0°C%	Rainfall>2mm				Comments
			18:00 21:00	21:00 00:00	00:00 03:00	03:00 06:00	

Decision		Notification Time	Spread Rate g/m ²	Start Time
Mount Bodies	Yes/No			
PreSalt All				
Pre Salt P1				
Pre Salt P2				
Fit Ploughs				
Continuous Gritting				

Decision Makers

Walsall Council Decision Makers	Division	Telephone Number
Dave Edwards	Traffic Management and Coordination	01922 654647
Paul Baker	Highways Maintenance	01922 654666
Steve Hawley	Traffic Management and Coordination	01922 654648
Sheridan Buckley	Traffic Safety and Operation	01922 654649

Development Plan

The long term implications of the revised code of practice are significant. However, due to this significance the code recognises that it may take up to 10 years to fully implement all of the requirements.

Priority actions for review over the life of this plan:

- Upgrading of the gritter fleet to ensure spreader equipment that can finely distribute de icing treatments with the coverage and precise concentration required by the new code. (Implementation Winter season 2016/17)
- Review of shared service provision options.(Ongoing)