

Cabinet

Wednesday 18 March 2015 at 6.00 p.m.

in Conference Room 2 at the Council House, Walsall

Portfolios

Councillor S. Coughlan,
Leader of the Council



Councillor Jeavons
Portfolio: Environment
and transport



Councillor Nazir
Deputy Leader and
Regeneration



Councillor Robertson
Portfolio: Health



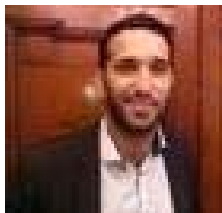
Councillor Cassidy
Portfolio: Children's
services and education



Councillor Chambers
Portfolio: Personnel and
business support



Councillor Hussain
Portfolio: Community,
leisure and culture



Councillor D. Coughlan
Portfolio: Social care



Democratic Services, The Council House, Walsall, WS1 1TW
Contact name: **Helen Owen** ☎ (01922) 654522 ✉ owenh@walsall.gov.uk
www.walsall.gov.uk

**If you are disabled and require help to and from the meeting room,
please contact the person above**

Agenda

Page

Part I – Public session

1. Apologies
2. Minutes – 4 February 2015 6 - 18
3. Declarations of interest
4. **Local Government (Access to Information) Act, 1985 (as amended):**
To agree that the public be excluded from the private session during consideration of the agenda items indicated for the reasons shown on the agenda.
5. Petitions
6. Questions:
(Note: 30 minutes will be allowed for pre-submitted questions from non-executive members and the public. All questions will have been submitted at least 7 clear days before the meeting.

Answers will be provided at the meeting - no supplementary questions will be allowed.)
7. Forward plan of key decisions 19 - 22
(Note: The Council's Constitution states:
 - (1) In these regulations a “key decision” means an executive decision, which is likely:
 - (a) to result in the relevant local authority incurring expenditure which is, or the making of savings which are, significant having regard to the local authority's budget for the service or function to which the decision relates; or
 - (b) to be significant in terms of its effects on communities living or working in an area comprising two or more wards or electoral divisions in the area of the relevant local authority.
 - (2) In determining the meaning of “significant” for the purpose of paragraph (1) this will be if it results in incurring expenditure which either exceeds that included in any approved revenue or capital budget, or results in the Council incurring expenditure, or the making of savings which are equivalent to or more than 5% of any approved revenue budget or 10% of a capital budget, subject to a de minimus level of £100,000.)

Deputy Leader and Regeneration: Councillor Nazir

Key decisions

- | | | |
|----|-----------------------------------|----------|
| 8. | Darlaston Local Development Order | 23 – 127 |
|----|-----------------------------------|----------|

Non key decisions

- | | | |
|-----|--|-----------------|
| 9. | Adoption of Shop Front Supplementary Planning Document | 127 - 134 |
| 10. | Disposal of the Allen's Centre, Hilton Road, Willenhall | To follow |
| 11. | Darlaston market - external operator outdoor market proposal | 135 - 139 |
| 12. | Walsall Market relocation | Separate report |
| 13. | Walsall Works | 140 - 159 |

Children's services and education: Councillor Cassidy

Key decisions

- | | | |
|-----|--|-----------|
| 14. | Youth Support Services | 160 - 183 |
| 15. | Determination of admission scheme and admission arrangements | 184 - 199 |

Non key decisions

- | | | |
|-----|--|-----------|
| 16. | Walsall Education Business Partnership | 200 - 209 |
|-----|--|-----------|

Community, leisure and culture: Councillor Hussain

Key decisions

- | | | |
|-----|-------------------------|-----------|
| 17. | Gala Baths improvements | 210 - 223 |
|-----|-------------------------|-----------|

Non key decisions

- | | | |
|-----|--|-----------|
| 18. | Walsall Adult and Community College | 224 - 263 |
| 19. | Community hubs final evaluation report | 264 - 281 |

Environment and transport: Councillor Jeavons

Key decisions

- | | | |
|-----|--|-----------|
| 20. | Highways maintenance strategy and Highways Asset Management Plan | 282 - 310 |
| 21. | West Midlands Local Transport Plan and Capital Programme 2015/16 | 311 -333 |

Health: Councillor Robertson

Key decisions

- | | | |
|-----|--|-----------|
| 22. | Award contracts for three Public Health services | 334 - 361 |
|-----|--|-----------|

Social Care: Councillor D. Coughlan

Key decisions

- | | | |
|-----|--|-----------|
| 23. | Better Care Fund | 362 - 377 |
| 24. | Charging policy for community based services | 378 - 449 |
| 25. | Residential and nursing transitional contracts | 450 - 474 |
| 26. | Walsall Crisis Support Scheme | 475 - 498 |

Non key decisions

- | | | |
|-----|---|-----------|
| 27. | Extension of transitional relief for business rates | 499 - 503 |
|-----|---|-----------|

Part II – Private session

Leader of the Council: Councillor S. Coughlan

Key decisions

28. Liability insurance arrangements 504 - 508

[Exempt information under paragraph 3 of Part I of Schedule 12A of the Local Government Act, 1972 (as amended)]

Health: Councillor Robertson

Key decisions

29. Award contracts for three Public Health services 509 - 518

[Exempt information under paragraph 3 of Part I of Schedule 12A of the Local Government Act, 1972 (as amended)]

Social Care: Councillor D. Coughlan

Key decisions

30. Residential and nursing transitional contracts 519 - 524

[Exempt information under paragraph 5 of Part I of Schedule 12A of the Local Government Act, 1972 (as amended)]

Non key decisions

31. Response to Monitoring Officer report on Appointees 525 - 533

[Exempt information under paragraph 5 of Part I of Schedule 12A of the Local Government Act, 1972 (as amended)]