

Palfrey and Pleck Local Neighbourhood Partnership Plan – 5th January 2005

PRODUCING THE FIRST PARTNERSHIP PLAN

1. Brief Summary of Report

The purpose of this report is to inform the LNP of the first partnership plan to open a debate on potential constructive proposals and prioritised actions for inclusion in the Palfrey and Pleck Partnership plan

2. The Initial Priorities

The initial priorities identified within the first Partnership Plan are as follows:-

- Young People
- Listening and Image
- Housing
- Environment
- Crime
- Health
- Education
- Access to Services

Suggestions for grouping of themes:-

- Young People
- Listening and Image
- Environment, Housing and Crime
- Health, Education and Services

3. Work to date

- Wider consultation with local communities identifying 10 key priorities against which specific actions will be delivered. From now until 2008 the council will tackle important issues linked to these 10 priorities to ensure that the vision for Walsall is achieved.
 - Ward Walks
 - RHCS Consultancy have facilitated a workshop immediately following the formal meeting. This entailed a summary of the key facts about the partnership area and identified themes for further discussions to take place. These included environment, crime, education, health, access to services, listening, housing and image.
 - Crime, listening and image themed workshops held to help populate the partnership plan.
-

- Identify Training and Development Opportunities available to the partnership, alongside strengths of the partnership.

4. Recommendations

- The partnership plan be approved and that acceptance of the plan be recommended to Council following submission to Cabinet.
- That the details of the workshops held to date are used as part of the first neighbourhood plan.
- That there be the formation of task groups to progress the detail of the first neighbourhood plan.

CONTACT OFFICER

Narinder Singh Chumber
Neighbourhood Partnerships Officer
Tel: 01922 653508
chumbern@walsall.gov.uk

PALFREY AND PLECK LOCAL NEIGHBOURHOOD PARTNERSHIP

COVER PAGE

Size - A4 Booklet

- 1) To be based on 'Vision Document' Style Cover including photographs from individual local areas
- 2) Photographs to be inserted within matrix with blanked off areas in-between.
- 3) Text above matrix to clearly show: (LNP area) Local Neighbourhood Partnership
- 4) Text below matrix to clearly show: Local Neighbourhood Plan 2004 - 05
- 5) Full logo's for Walsall MBC & Walsall Borough Strategic Partnership to go underneath at bottom of page.

LOCAL NEIGHBOURHOOD PLAN 2005 -06

Contents

Walsall Council - A Vision for Walsall in 2008

About Walsall Borough Strategic Partnership

Section one - Introduction

Section Two – Area Profile

Section Three – Areas for Action

Section Four – Making it Happen

Appendix

Walsall Council – A Vision for Walsall in 2008

Walsall Council has agreed its vision and priorities from now until 2008. This has been achieved through local consultation about what sort of place Walsall could be in the future and what part the council should play in leading the changes ahead.

To support this vision the council has identified 10 priorities against which specific actions will be delivered. From now until 2008 the council will tackle important issues linked to these 10 priorities to ensure that the vision for Walsall is achieved.

Vision 2008: In 2008, Walsall will have an established reputation as an ambitious “can-do” place where a civic, economic and cultural renaissance has been made possible.

In 2008, Walsall people are proud of their heritage, proud of what their borough has become and excited about future opportunities.

In 2008 Walsall will be a learning borough that promotes the value of learning and achievement, in our schools and colleges in the home, in the community and at work.

In 2008 Walsall will have a reputation as a clean, green and safe borough.

By 2008, real improvement will be evident in the health of our citizens, and the needs of people who care for others will be acknowledged and their work valued.

In 2008 local people will see themselves as residents of the borough as a whole. Local districts and their centres will still have their strong sense of identity. Walsall Town Centre will be an exciting and vibrant place for culture and business – acting as the economic powerhouse of the borough.

In 2008 Walsall Council will be recognised as a listening organisation, which effectively represents, but also tackles, the concerns of local people. The council will provide strong and responsive civic leadership, supporting local communities with the resources and tools to provide local solutions to local problems. Walsall will enjoy high levels of civic involvement in neighbourhood partnerships and in a capable, vibrant voluntary sector.

By 2008 Walsall will have played a full role in transforming the Black Country into a highly successful sub-regional economy.

Priority Areas:

- Ensure a Clean and Green borough
- Make it easier to get around
- Ensure all people are safe and secure
- Make our schools great
- Make Walsall a healthy and caring place
- Encourage everyone to feel proud of Walsall MBC
- Make it easier to access local services
- Strengthen the local economy
- Listen to what people want
- Transform Walsall into an excellent local authority.

About Walsall Borough Strategic Partnership

“Walsall will be a prosperous, inclusive and competitive Borough in which its diverse communities feel involved, safer, healthier, and can take pride in its future.”

Walsall Borough Strategic Partnership (WBSP) is Borough-wide and brings together the major service delivery agencies (Police, Health, Local Authority), and the business, community and voluntary sectors, to tackle issues of deprivation within the Borough's most deprived areas.

The WBSP comprises six Theme Groups:

- Improving Community Safety and Crime Reduction
- Improving Health, Well-Being and Social Care
- Regenerating the Economy
- Sustaining a Better Place to Live and Work
- Raising Educational Standards through Lifelong Learning
- Community Engagement (and Equalities)

The Partnership is now commissioning against four strategic objectives:

- Supporting a thriving Economic Community, through supporting existing businesses, encouraging new business and raising the skills base of people in Walsall
- Environment and Improving the Image of Walsall, through raising aspirations, improving liveability, and regenerating the fabric of neighbourhoods
- Opportunities for Children, through a variety of formal and informal activities
- Community Safety and Reclaiming Neighbourhoods and addressing the impact of substance misuse, through education and awareness raising, particularly on young people through diversionary and health promotion activities

With four integral Themes:

- Skills Escalation
- Raising Aspirations
- Community Cohesion
- Improving the Image of Walsall

The WBSP works closely with Walsall Community Empowerment Network to ensure that communities of interest and geography are fully involved with the Partnership and the decisions it makes. This also includes the Local Neighbourhood Partnerships.

Together these strategic priorities set the backdrop against which Local Neighbourhood Partnerships operate and set the scene for improvements identified within this neighbourhood plan.

SECTION ONE: INTRODUCTION

Foreword by Partnership Chair – Cllr Yasin

What is a Local Neighbourhood Partnership?

A Local Neighbourhood Partnership or LNP is a meeting at a more local level, between the council, partner agencies and representatives of the business, voluntary and community sectors where local issues are discussed, problems identified and solutions proposed to resolve them. A further key role of the LNP is to engage and consult with all local people to help identify these key neighbourhood issues and to seek views on how best to tackle them, and in doing so, produce a local neighbourhood plan.

The make-up of a local neighbourhood partnership includes all ward councillors for the area, four council appointed partners including the police, Primary Care Trust and primary and secondary school representatives, and up to ten locally appointed partners from the business, voluntary and community sectors. This however, does not stop members of the public becoming involved, as meetings, which are held every three months, are open, with everyone free to attend. Each meeting of the LNP does have an agenda, with key topics for discussion, but also allows time for members of the public to raise questions and to have their say on local issues.

What can the Local Neighbourhood Partnership do? –

What will the Local Neighbourhood Plan be used for? –

SECTION TWO: AREA PROFILE – Strategic Intelligence Unit

Map of the Area (To be included)

MAP

Facts About the Area

This Section presents a range of statistics on the LNP; it places this LNP in context of the Walsall borough wherever possible.

- Population structure:** This LNP area has above the borough average for people aged up to 29 years old and well above average numbers of young people aged between 16 and 29 years of age. Some 56% of residents are of white origin, with 38% of the area's population being of Indian, Pakistani or Bangladeshi origin. It has below the borough average of owner occupiers but above the borough average of lone parents and households with a limiting long term illness. It has a high rate turnover rate of households moving (second only to the LNP which includes the town centre area) which would suggest it does not have a settled community around which to build.
- Environment:** In a study completed in 2001, residents in this LNP area were asked "Are you satisfied with this area as a place to live?" while 70% answered "Yes" – there was only one other LNP area which were less satisfied with their living environment. In fact 45% of people when asked thought it had got worse as a place to live.
- Economy:** The area has below the borough average for economically active people and, as a result, a high level of unemployed people. It is the second highest of all LNP areas regarding numbers of people claiming Jobseekers Allowance benefit. In terms of people claiming a range of benefits (such as Disability Living Allowance, Income Support and Council Tax benefit) it is above the borough average in all categories.
- Crime:** The area has seen a fall in the numbers of reported crime over the last 4 years. Total crime per 1,000 population has fallen from 141 in 2000/01 to 104 in 03/04. This declining trend now makes this LNP area the third "worst" in terms of reported crime with both St Matthews & Birchills Leamore (the town centre LNP) and Blakenall & Bloxwich having higher levels of reported crime. The very slight increase in reported disorder incidences from 111 in 2002/03 to 112 in 03/04 and the fall in youth offenders from 3.1% to 2.4% (% of young people offending based on numbers of 10-17 year olds in the locality) all indicate that, whilst crime remains a concern the area shows signs of improvement.

Statistics relating to specific neighbourhoods within the LNP area

Government departments have developed a way of mapping “poverty or deprivation indicators” across the UK. They use a variety of statistical sources to arrive at what is known as the “Index of Multiple Deprivation”. This is essentially a way to “rank” all the areas of England to identify those areas in most of need of assistance to raise income levels, improve health and education in the area etc.

A recent improvement is that the Government has now developed a way to consider smaller local neighbourhoods within wider geographic wards; they are useful to highlight distinct “pockets” of deprivation or poverty.

The Government has called these small neighbourhoods “super output areas” or SOAs for short. There are some 32,482 of these “SOAs” across the country; each has been given a numerical code. The Council has applied these codes to the appropriate LNP area.

The map above details these codes; the chart below applies the codes to local neighbourhoods. The LNP has allocated identifying names to these neighbourhoods, based on local knowledge, to more easily identify distinct areas within the LNP which may be in need of “special” help.

Understanding the chart below

The chart details the ward names within the LNP; it applies the SOAs (small neighbourhoods) within the Ward and gives a more local neighbourhood name to the numerical code given by the Council.

The final two columns give the “Rank of Index of Multiple Deprivation”, essentially the lower the rank – the more deprived the area. Thus “North West of Pleck” with a score of 1,017, is considered to be the most deprived neighbourhood, overall, in this LNP area and therefore in need of most help.

The final column states the “IMD Most Deprived Percentage”. There are 32,482 SOAs (small neighbourhoods) nationally; the Council has ranked neighbourhoods largely by those in the top 25%, 50% and 75% for ease of reading. So:

Rank:	1 – 8,120	those falling within the top 25% (e.g. “most deprived”)
Rank:	8,121 – 16,241	those between 25% to 50% (mid range)
Rank:	16,242 – 24,362	those between 50% to 75% (above mid range)
Rank:	24,363 – 32,482	those between 75% to 100% (those “least deprived”)

To further explain the above ranking, neighbourhoods “scoring below 3248” – would be in the top 10% most deprived nationally, those “scoring below 6,496” would be in the top 20% most deprived nationally and so on; we use these smaller percentages later in this section.

Summary of Key Area Statistic's

Ward	Super Output Area (SOA) Numerical Code	"Neighbourhood within the LNP"	Rank of Index of Multiple Deprivation	IMD Most Deprived Percentage
Pleck	E01010364	N/W of Pleck	1017	5
Palfrey	E01010340	Caldmore	1254	5
Pleck	E01010365	New Mills	1831	10
Pleck	E01010366	Paget's Bridge	2036	10
Pleck	E01010269	Birchills	2193	10
Palfrey	E01010335	East Bescot	3376	15
Palfrey	E01010343	Palfrey	3562	15
Pleck	E01010367	Pleck Park and James Bridge	3924	15
Palfrey	E01010342	East Palfrey	4178	15
Pleck	E01010268	Reedwood	4352	15
Pleck	E01010363	Manor Hospital Area	4433	15
Palfrey	E01010341	Caldmore/Pleck	4454	15
Pleck	E01010362	Junction 10	5339	20
Palfrey	E01010344	Palfrey Park	5972	20
Palfrey	E01010338	Fullbrook	6442	20
Pleck	E01010270	Northern Tip of LNP	8217	50
Pleck	E01010361	South East of Palfrey	9795	50
Palfrey	E01010336	West Bescot	9869	50
Palfrey	E01010337	The Delves	14997	50
Palfrey	E01010339	N/E of the Delves	17535	75

There are therefore 20 small neighbourhoods in this LNP area. Breaking statistics into smaller neighbourhoods provides the LNP with a far better grasp of specific areas within the locality which may be in need of help.

This LNP area has 15 small neighbourhoods in the top 20% of deprived areas nationally. There are three further neighbourhoods (noted above as "the Northern tip of the LNP, South East Palfrey and West Bescot) which "score" considerably less than the areas of Delves at the foot of the Table. Hence this would suggest that, across the wider LNP area, deprivation is comparatively widespread.

Considering specific elements of the overall "neighbourhood ranking"

The above chart brings together a series of "scores" from various aspects of living in an area to arrive at the overall rank. These aspects include:

Crime (the incidence of recorded crime for four major crime themes: burglary, theft, criminal damage and violence)

Education & Skills (the numbers of skills and qualifications held by local people, both young people and adults)

Employment (numbers of unemployed people in the area)

Health (those people whose quality of life is impaired by poor health),

Housing & Services (lack of services based on geographical barriers or access to suitable housing)

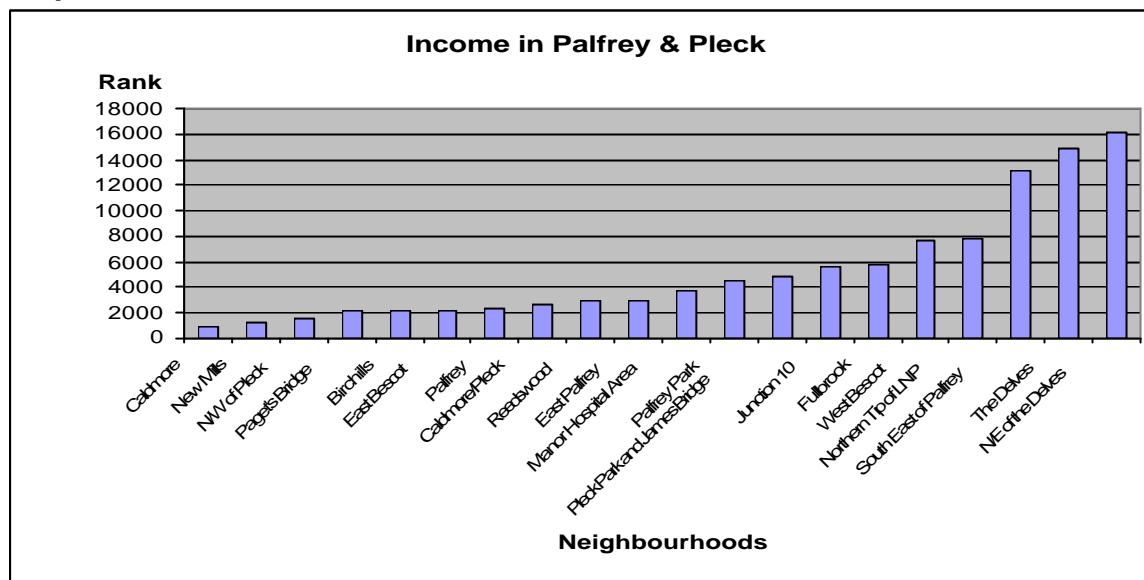
Income (average wage levels, various economic indicators)

Living Environment (considers the indoors living environment (measures the quality of available housing) and the outdoors environment)

The following charts present a variety of the above “aspects” which may be of interest to the LNP.

Income

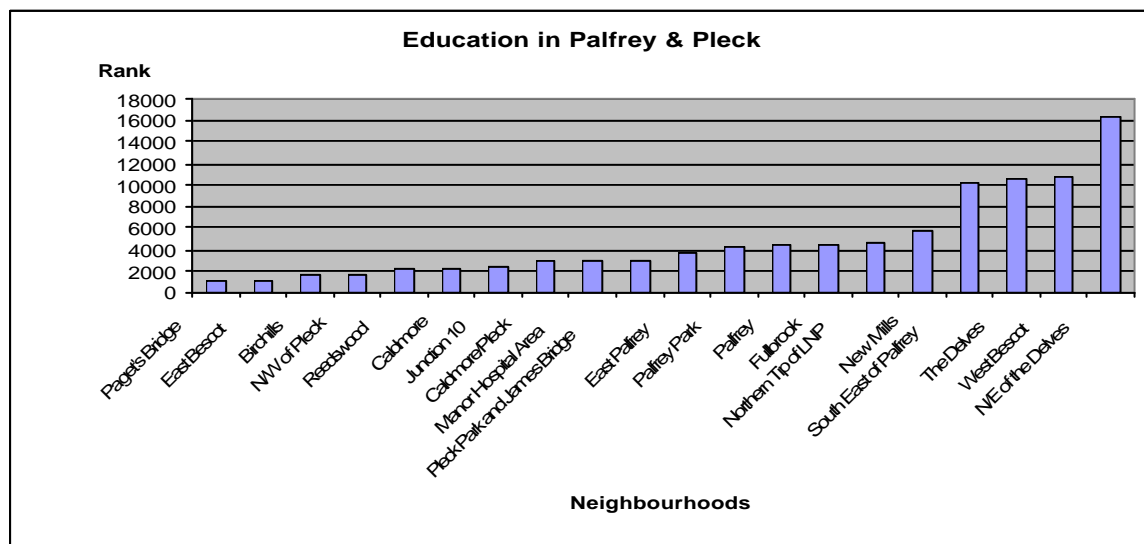
Graph 1



The above graph confirms the extent of the deprivation across the LNP area, Caldmore is the most deprived small neighbourhood with a “score” of 907 which places it in the top 3% of most deprived neighbourhoods in England. Indeed the 3 neighbourhoods to the left of the graph all score below 1,624 hence they are in the top most 5% deprived neighbourhoods in England. In fact reading the graph from left to right confirms that all neighbourhoods in this LNP (other than South East of Palfrey, Delves and North East of Delves at the extreme right of the graph) score below 8,120, hence they are within the top 25%, most deprived, of all English neighbourhoods.

Education

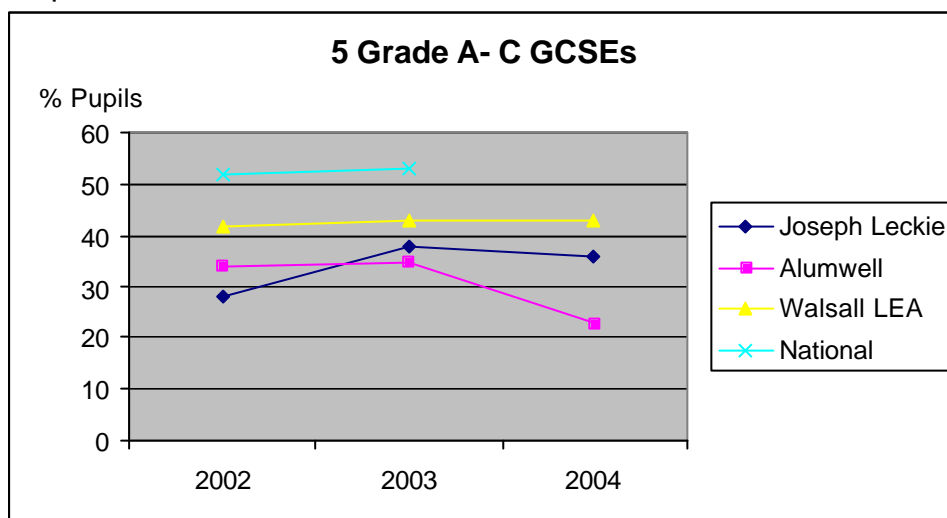
Graph 2



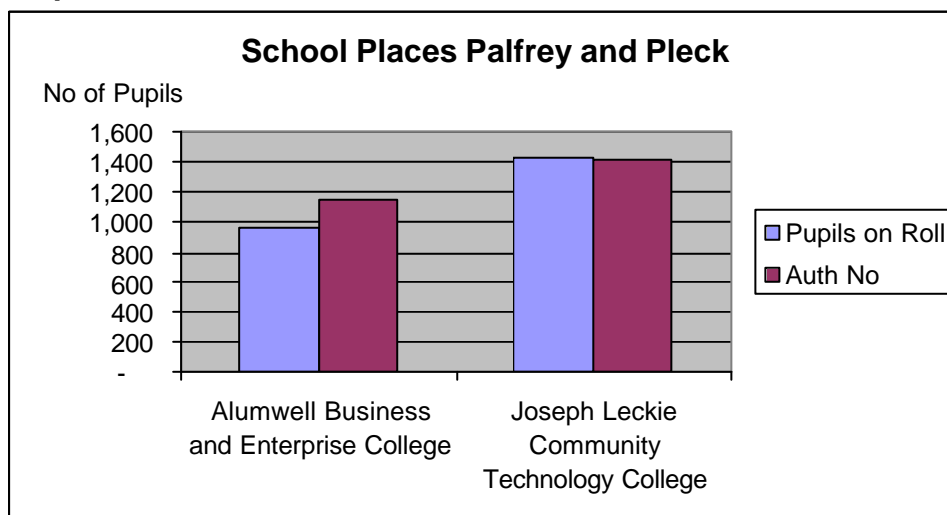
The scale of the left axis indicates that all neighbourhoods (other than North East of Delves) score below 11,370 (therefore top 35% of deprived neighbourhoods in England). In terms of this aspect, both Paget's Bridge and East Bescot have a very low score, both being in the top 5% of all English neighbourhoods, with a further 8 neighbourhoods (reading across from Birchills to Pleck Park and James Bridge) being in the top 10%.

Considering the achievement of pupils in the secondary schools in the area, Graph 3 highlights that both schools are below the Borough average and more recently have been falling in terms of the percentage of pupils achieving 5 Grades A to C.

Graph 3



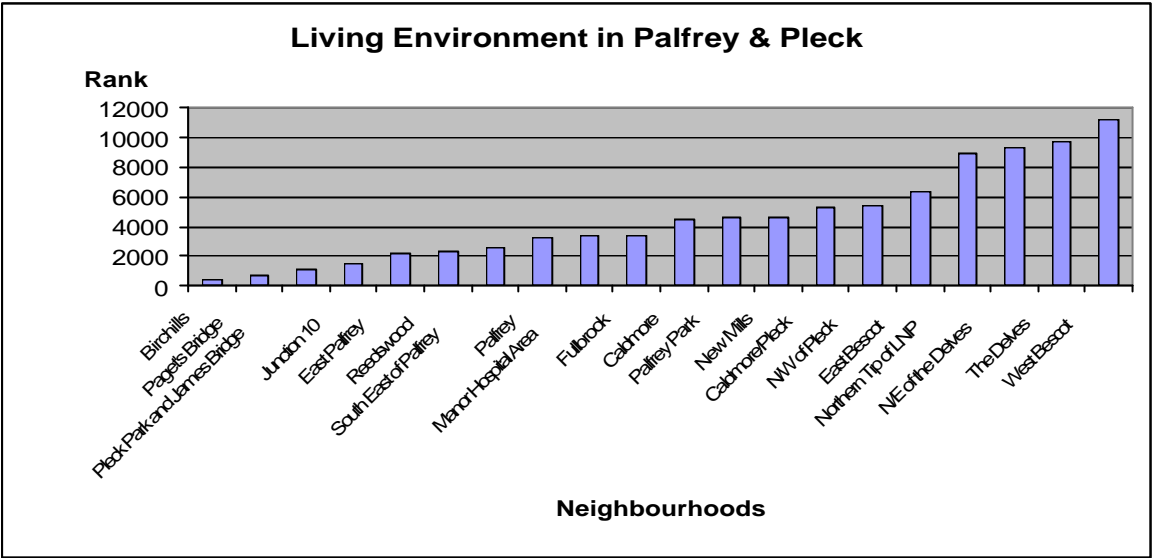
Graph 4



Graph 4 above indicates the take up of places in the two schools, as can be seen Joseph Leckie is slightly oversubscribed and Alumwell considerably undersubscribed.

Housing and Environment

Graph 5

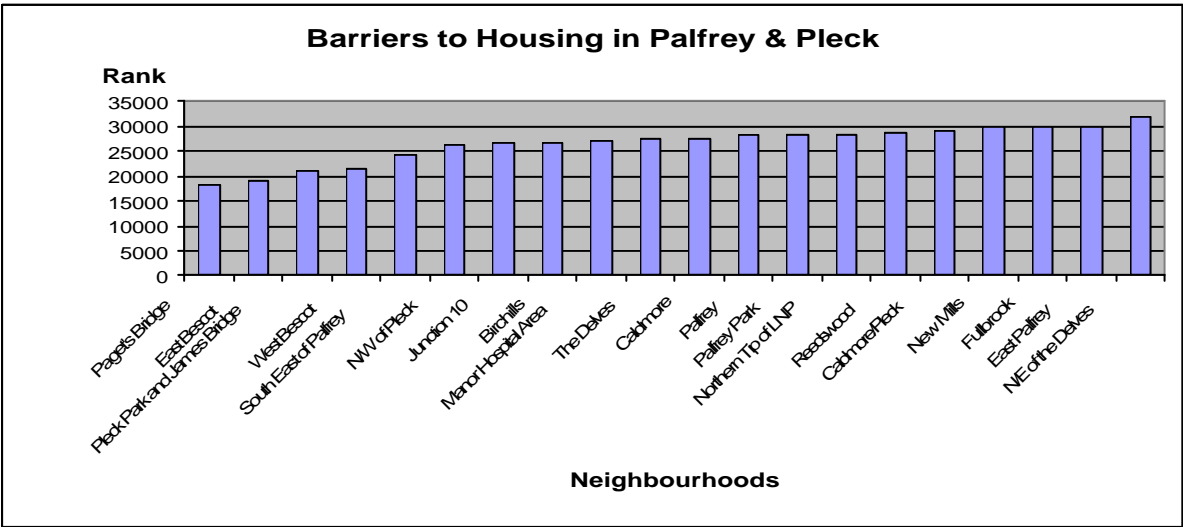


This aspect considers the indoors living environment in terms of measuring the quality of available housing and the outdoors environment. The above chart graphically illustrates the extent of the deprivation in specific neighbourhoods within the LNP area. Both Birchills and Pagets Bridge (to the extreme left) score 435 and 758 respectively, hence they are in the top 3% of all English neighbourhoods. There are 13 neighbourhoods in total (reading from Birchills to New Mills) which are within the top 15% of all English neighbourhoods regarding this aspect.

However it is useful to consider a further element of the “living environment”. The following chart titled “Barriers to Housing” is an indication of the amount of housing stock available in the area. It is to be noted that Pagets Bridge (most deprived) scores 18,191, well above the 50% level of deprived neighbourhoods at 16,241. Thus all neighbourhoods score highly.

This would suggest that there is sufficient housing in the area, but the quality of the housing stock may need attention.

Graph 6



SECTION THREE: AREAS FOR ACTION

THEME: Ensure a clean and green area

Objective: To improve the environment of the local area

Action	Target & Timescale	Champion	Outcome	Progress so far	Themed Strategic Link
Involving local residents groups may give a degree of control over who takes up tenancies in the LNP area					
Improving communication could be achieved by establishing a 'Palfrey and Pleck' One Stop Shop, where services/facilities could be coordinated centrally.					
Developing an agreement between tenant and landlord could be beneficial. The Wolverhampton Safer Estates Agreement was mentioned as perhaps a model to be investigated					
Note: The Ward Walk in October notes concerns over the condition of derelict flats in Bescott Street		Council officials to discuss with WHG			
<u>Transport issues:</u> Wallows Lane HGV parking: LNP members to discuss		LNP members			

with residents paying to have a gate erected on the road Applying parking restrictions to HGVs		Planning & Transportation			
<u>Fly tipping</u> Rutter Street Car Park Land opposite Palfrey Junior School		Street Pride Street Pride			
<u>Environmental Grot Spots</u> The Ward Walk details both commercial and residential properties where action may be required.		Street Pride or commence enforcement action Public Protection		<u>Note</u> : Leaflet drop to be undertaken to residents in Caldmore cautioning against feeding pigeons	
Raise awareness of cultural/religious events to encourage greater integration and engender respect.					

Sub Action Plan relating to Transforming your Space (TYS) projects

A report was presented to the LNP, by officers of the Council, at its meeting of 4th October. The following "Transforming your Space" schemes were recommended to be noted in the Local Plan for the LNP area. TYS schemes will play a part in improving the local environment as indicated below.

Action	Target & Timescale	Champion	Outcome	Progress so far	Themed Strategic Link
<u>Primley Avenue Open Space</u> The project will provide a new play area in a more visible location, the site of the existing play area will be transformed into a multi-use games area, a new skate park behind the existing play area and a resurfaced pathway.	Work to be completed by July 2005.	TYS			
<u>Palfrey Park</u> The scheme will improve the existing sports and youth facilities in the Park. Proposals include replacement of 2 existing tennis courts to provide a multiuse court and a marked out pitch for basketball and 5 a-side football, fencing work, re-alignment of the footpath (paid for by the Heritage Lottery Fund) and a youth shelter.	Work to be completed in December 2004.	TYS			

<u>Pleck Park</u> One of the existing tennis courts will be converted into a multi use games area, the existing grassed football pitch will be refurbished and a youth shelter will be installed.	Work to be completed in December 2004.	TYS			
<u>Silverdale Park</u> The existing play area will be refurbished to include new equipment, fencing and safety surfacing.	Work to be completed in December 2004.	TYS			

THEME: Ensure all people are safe and secure

Objective: To reduce levels of crime and fear of crime in the local area

This LNP held a workshop which focussed on crime in the local area. The issues of concern have been grouped into the following areas:

- Anti social behaviour. The group identified specific locations in the LNP area which are the focus of anti social behaviour and patterns of behaviour which need to be addressed. Anti social behaviour includes skateboarding in inappropriate areas, cycling in the shopping area, playing football at night, general vandalism. There are also incidences of racial harassment around the Wolverhampton/Bentley Drive area and Joseph Leckie Comprehensive School.
- Drugs and Prostitution: These have both been serious issues in the area for several years having been noted on previous Community Plans. Both are particularly prevalent in specific areas such as Hillary Street, the Library in Old Pleck Road, and Scarborough Close where kerb crawling is a regular occurrence. There is a view that prostitution has been displaced from other areas which has made it worse in this LNP area. Drug dealing and prostitution has led to a climate of fear on local streets.

Action	Target & Timescale	Champion	Outcome	Progress so far	Themed Strategic Link
Locations which “attract” anti social behaviour: Reservoir Street Silverdale Park Junction Street Play area Woodwards Road/ Alumwell Comprehensive School. M6 Motorway/Walsall Canal/Darlaston Rd Junc. There is a need for more community policing and the Alumwell Crime Wardens to have a greater presence.		Ward Councillors/ residents/ Police			

Alumwell School need assistance to implement both exclusion orders and a rehabilitation programme to assist children back into mainstream education					
Greater enforcement needs to take place with residents having confidence that reporting of criminal activity will lead to action and possible conviction					
Racial Harassment					
Drugs					
Prostitution					
Lighting					
Car Crime					
Dispersal Orders; Community Policing					

Crime Wardens – presence					
Exclusion of children;					
Fear of Crime					
Road Taxing					
Policing / Community Support Officers/ Wardens					

Themes: Listen to what local people want;
Encourage everyone to feel proud of the area

Objective:

Action	Target & Timescale	Champion	Outcome	Progress so far	Themed Strategic Link
Identify and Involve key Stakeholders					
Environment <ul style="list-style-type: none"> - Transforming Your Space - Allotments - M6 Pollution - Street Scene: Clean up; Bins; fly-tipping & Illegal dumping 					
Housing <ul style="list-style-type: none"> - Delves Experience - Safer Estates Agreement (Wolverhampton Model) - Partnership between tenants and Housing Providers - Vetting of Tenants 					

Landmarks & Gateways into the Borough <ul style="list-style-type: none"> - Manor Hospital – linked to local jobs - Bescot Stadium: image and usage - University 					
Friendly, Inviting and Cool <ul style="list-style-type: none"> - Healthy Living Centre - Sports - Good Infrastructure – shops, whereby people want to shop - Palfrey CA 					
Traffic and Transport <ul style="list-style-type: none"> - Traffic Congestion - Illegal Parking - Speed Enforcement - Pleck Bridge 					
Economy <ul style="list-style-type: none"> - Attainment of Young People - Local Learning Provision - Tailored Training - Training Aspirations between gender/religion etc - Training to become 					

<ul style="list-style-type: none"> carers - Insight into Jobs - Skills Base - Jobs Available to all sections of community - Being aware of what schemes run & where 					
Prostitution <ul style="list-style-type: none"> - Climate of Fear - Displacement of prostitutes - Environmental Issues - Reporting vs Action - Kerb Crawling - ASB: Alleyways/houses 					
Identity, Cohesion and Respect <ul style="list-style-type: none"> - Integration of children into School - Awareness of Cultural/ Religious issues/events - Celebration of Cohesion/ Diversity - Refrain from Isolation 					
Drugs and Crime (See Crime Section)					

SECTION FOUR: MAKING IT HAPPEN

Summary of Planned Consultation Events

How local people will be involved

Review of the Plan

Each plan upon completion will be presented to Walsall council, it's partners and local communities to outline what actions have been agreed, and what the plan contains. In this first instance, the neighbourhood plan will be in effect until the end of March 2006, but thereafter will be reviewed on an annual basis. In this way, the partnership will ensure that any actions that have been suggested or identified as part of the neighbourhood plan will indeed be acted upon, making it accountable to the whole of the local community. Action on developing and reviewing the plan will not stop once the initial plan is completed, but will in effect be an on-going process as issues are resolved and new ones are identified.

Partnership Meeting Dates – Constitutional Services

APPENDIX

List of Partners - Constitutional Services

Useful Contacts – (To be added)

Appendix

Appendix 1

Palfrey and Pleck Crime Workshop

Issue	Location
Racial Harassment	<ul style="list-style-type: none"> ➤ Wolverhampton Road/Bentley Drive ➤ Joseph Leckie Comprehensive School
Drugs and Prostitution	➤ Hillary Street
Football playing at night	➤ Kingsley Street
Prostitution and Vandalism	➤ By Library, nr Old Pleck Road
Skateboarding	➤ By Elderly Residents Houses in Woodward's Road
Cycling in shopping area	➤ Reservoir Street
Stolen cars abandoned on ex football pitch	➤ Nr Alumwell Comprehensive School
Prostitutes operating in area around garages. Police informed – no action has been taken	➤ Scarborough Close
Lack of lighting and anti-social behaviour (drug use, drinking etc.) in alleyway. Alleyway leads to a burnt out play area with broken glass and no lighting.	➤ M6 Motorway/Walsall Canal/Darlaston Road Junction
Main car crime and anti-social behaviour hotspot. No long-term action available to combat this.	➤ Woodward's Road/Alumwell Comprehensive School
Two houses have been burnt out	➤ Flaxhall Street
Dispersal Order and no Community Policing	➤ Moat Road/Pleck Road
Young people want to know what they can do to lift the curfew	➤ Wolverhampton Road/York Avenue
Alumwell Crime Wardens are ineffective. Little visible presence.	➤ Alumwell Road
The Alumwell School is ready to exclude children, but have no active part to rehabilitate into mainstream school.	➤ Nr Alumwell Primary/Nursery School

Appendix 2

Palfrey and Pleck Listening and Image Themed Workshop
16th Novemer, 2004

Attendees

Kirplal Kaliroy	Local Appointed Partner
Lulu Miah	Walsall Bangladeshi Network
Mark Pulford	Local Appointed Partner
Shirley Spencer	Retail Draper
Mahik Miah	Bangladeshi Cultural Society
Allah Ditta	Local Appointed Partner
Narinder Singh Chumber	Neighbourhood Partnership
Julie Ball	Neighbourhood Partnership

Palfrey and Pleck Mapping

Exercise 1 What do we want to achieve and how do we want our area to look

- Involvement of Young People
- A Clean, Green, Safe and Healthy local environment – linking this comment to open spaces in the area
- Drug Free Zone
- Reduction of Crime and Violence
- Reducing Traffic congestion, increasing access and parking availability

Issues specific to image of the area

- Litter
- Prostitution
- Signage – identify places etc
- Becoming and staying a vibrant and inviting area
- Safe and sound (night and day)
 - CCTV
 - Lighting
 - Traffic calming
 - Visible police presence
 - Neighbourhood wardens

Issues around listening

- Children being seen and heard (involvement and engagement of young people)
- Community groups
- Local businesses
- Knowing service providers are *Listening and Responding*

Specific Issues

- Housing – Partnerships between tenants and landlords/ housing agencies
 - specifically around issues around undesirable tenants. The Wolverhampton Safer Estates Agreement was mentioned
 - Tenants should have more accountability to the area that they live in
 - Local people having some control of who takes up tenancies in their area, involving local residents groups
- Formation of a ‘Palfrey and Pleck’ One stop shop, whereby all could be coordinated centrally, thus improving communication

Group discussions concluded that Palfrey & Pleck LNP area should be a:

Working Together to improve the area for local people, understanding our communities may have different needs; encouraging people to communicate their different needs; not afraid to challenge and willing to be held accountable. Also including:-

- Cool
- Relaxed
- Communities *supporting* each other
 - Feel good factor
 - Caring
- Do young people feel the same?

The group were asked to identify various issues, highlighting positive issues, areas in the need of improvement and outside information affecting the LNP area

Outside factors influencing the area
Factor
Junction 10
Town Wharf Jobs
Town Centre Redevelopment – Jobs
Council's response to Home Office consultation regarding Prostitution
Health
Pleck Bridge

Positive Aspects within the Palfrey and Pleck LNP area
Factor
Delves Green Common
Schools in the area
Bescot Railway Station
Improvements to Palfrey Park
Bescot Stadium
Retail Park
Palfrey Park
Palfrey CA
Manor Hospital

Areas of Concern	
Issues	Location
M5 / M6 Pollution	J9 M6 junction
Heavy flow of traffic especially around J9	Junction 9
Fly tipping	Bescot Road/ Darlaston Road
Parking on Yellow lines	Bescot Road/ Darlaston Road
Better communication between Delves & Palfrey	
Enforcement of new speed limit	Broadway
Traffic Speed	Broadway
Parking Congestion/ Problems	West Bromwich/ Broadway West Windmill Street/ Bath Road
Traffic Congestion	Near Manor Hospital/ Pleck Road
Litter	Near Manor Hospital/ Pleck Road
Drug Dealing	Near Manor Hospital/ Pleck Road
Drug related Crime & Violence	Near Manor Hospital/ Pleck Road
Prostitution	Caldmore Road Windmill Street/ Bath Road
Housing	Windmill Street/ Bath Road
Education	Windmill Street/ Bath Road
Poor Employment Prospects	Windmill Street/ Bath Road
Health Care	Windmill Street/ Bath Road
Youth Issues	Windmill Street/ Bath Road
Traffic	Near Palfrey Park
Litter	Near Palfrey Park
Youth intimidation- especially at night	Wallow Lane/ Broadway
Caldmore Housing	Milton Street Area
Parking on Road	Milton Street Area
Litter & Traffic	Milton Street Area
Housing	Milton Street Area
Milton Street Shopping Area	Milton Street Area
Parking on Double yellow lines- difficult for other vehicles to get through	Milton Street Area

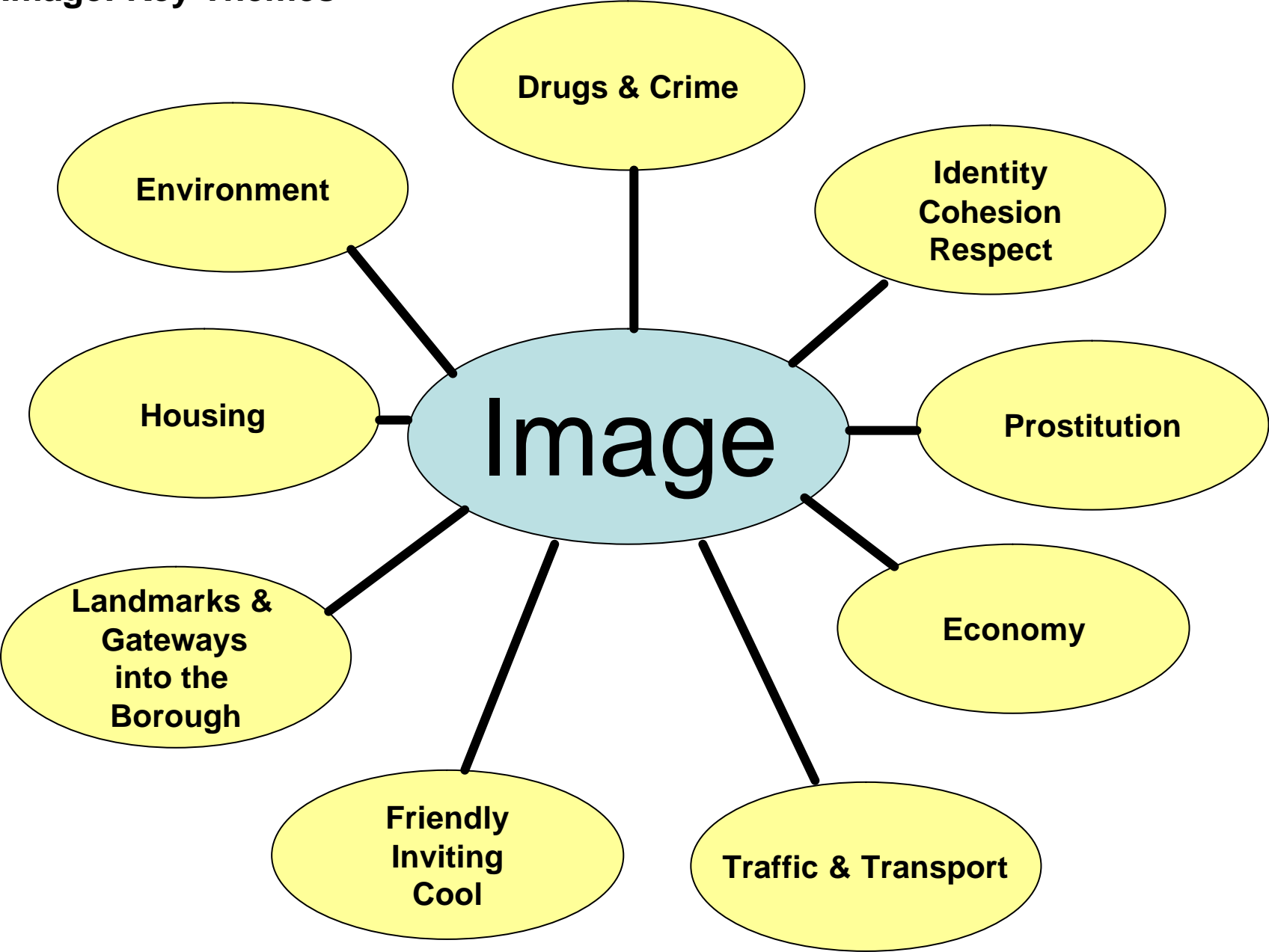
During the evening 9 themes were identified under the Image heading. The table below states the themes identified and the rank of order. Each individual was given 3 dots and asked to place their dots next to the issues which they thought were their priorities for the area. They were allowed to place all 3 dots on a single issue or on a different number of issues.

Theme	No. of votes	Rank
Drugs & Crime	4	2
Identity/ Cohesion/ Respect	-	
Prostitution	3	3
Economy	1	5
Traffic & Transport	9	1
Friendly, Inviting & Cool	1	5
Landmarks & Gateways into Borough	-	
Housing	-	
Environment	3	3

Attendees were asked whether they wished to form a Listening and Image Task group. The following people have expressed an interest:-

Name	Organisation
Mark Pulford	Local Appointed Partner
MH Manik Miah	Bangladeshi Cultural Society
Shirley Spencer	Retail Draper
MD Lulu Miah	Walsall Bangladeshi Network
Allah Ditta	Local Appointed Partner
Kirpal Kaliroy	Local Appointed Partner

Image: Key Themes



**Y
O
U
N
G

P
E
O
P
L
E**

Listening: Key Themes

