

Performance Issues for Waste Management

RHBE Scrutiny Committee
15th December 2004

Major Issues

- Performance Indicators and Comparisons with Neighbours
- Waste Targets
- Dry recycling progress
- Education
- Bulky Items full report next on the agenda

Performance Indicators

- BV82a % of the total tonnage of household waste arisings which have been recycled (CPA Indicator)
- BV 82b % of the total tonnage of household waste arisings which have been sent for composting (CPA Indicator)
- BV 82c % of the total tonnage of household waste arisings which have been used to recover heat, power or other energy sources
- BV 82d % of the total tonnage of household waste arisings which has been landfilled (CPA Indicator)
- BV 84 Number of kilograms of household waste collected per head (CPA Indicator)
- BV 86 Cost of waste collection per household
- BV 87 Cost of waste disposal per tonne for municipal waste
- BV 91 % of population resident in the Authorities area served by a kerbside collection of recycled (CPA Indicator)

Performance Indicators – 2003/04

• Authority	82a	82b	82c	82d	84	86	87
• Birmingham	10.4%	2.6%	68.3%	25.7%	453	£37.31	£53.73
• Coventry	10.5%	3.9%	77.3%	8.4%	455	£28.18	£30.26
• Dudley	7.8%	6.4%	69.4%	16.5%	410	£38.16	£43.24
• Sandwell	6.6%	2.7%	15.1%	75.6%	470	£31.52	£32.63
• Solihull	11.2%	2.0%	59.4%	27.4%	502	£25.63	£40.00
• Walsall	5.1%	9.6%	5.4%	79.9%	494	£28.99	£28.50
• Wolverhampton	4.2%	5.1%	67.8%	23.0%	528	£32.79	£42.55
• Average	8%	4.6%	51.8%	36.6%	473	£31.80	£38.70
• Upper quartile	10.4%	5.7%	68.9%	51.5%	498	£35.05	£42.90
• Median quartile	7.8%	3.9%	67.8%	25.7%	470	£31.52	£40.00
• Lowerquartile	5.8%	2.6%	37.3%	19.7%	454	£28.59	£31.45
•							
• Bir/ham quartile	2	4	2	2	1	4	4
• Covtry quartile	1	3	1	1	2	1	1
• Dudley quartile	3	1	1	1	1	4	4
• Sanw/ll quartile	3	3	4	4	2	2	2
• Solihull quartile	1	4	3	3	4	1	2
• Walsall quartile	4	1	4	4	3	2	1
• Wolver quartile	4	2	3	2	4	3	3

Waste Targets

The Government's waste strategy aims to minimise the production of waste and either recycle, compost or recover value from as much of what remains as is practicable. This approach is reflected through BVPI's, DEFRA's PSA targets and statutory performance standards for 2003/04 and 2005/06. Walsall's recycling target for 2005/06 is to recycle 24% of waste.

The UK is under a legal obligation through the European Landfill Directive to make a significant reduction in the amount of biodegradable municipal waste (BMW) sent to landfill.

- By 2010 BMW must be reduced to 75% of the total BMW (by weight) produced in 1995;
- By 2013 BMW must be reduced to 50% of the total BMW (by weight) produced in 1995; and
- By 2020 BMW must be reduced to 35% of the total BMW (by weight) produced in 1995.

Walsall Council recycled or composted 11.4% of domestic waste during the 2002/03 financial year which increased to 14.7% for 2003/04. Further action is required to achieve the statutory target of 24% for 2005/06.

Dry Recycling Progress

- Aldridge South/Hatherton/Rushall/Paddock Nov 2004
- Streetly/Pheasey Nov 2004
- Pelsall/Bloxwich West Jan 2005
- Bloxwich East/Brownhills Jan 2005
- Willenhall North/St Matthews Feb 2005
- Aldridge North/Walsall Wood Feb 2005
- Birchills/Leamore/Blakenall/Pleck Feb 2005
- Darlaston South/Short heath/Will South Mar 2005
- Bentley & Darlaston North/Palfrey Mar 2005
- The service should be fully operational from around 101,000 properties across the borough by April next year.
- The council cannot collect green boxes from people living in flats and maisonettes, but around 6,000 such households will get a mini-recycling centre outside their building to recycle glass bottles, jars and drinks cans – paper cannot be collected because of the fire risk.

PARTICIPATION RATES PER WARD FROM JANUARY TO MAY 2004

(Based on ward boundaries as at May 2004)

AREA	COLLECTION DAY	ROUND	TONNAGES 19.1.03-31.5.04	AVERAGE % PARTICIPATION RATE	AVERAGE KG. COLLECTED PER PARTICIPATING HOUSEHOLD
Aldridge Central & South	Tue	2b	46.50	62%	54 Kg
Hatherton Rushall	Tue	1b	45.10	54%	60 Kg
Paddock	Fri	1a	44.64	73%	44 Kg
Streetly	Wed	1b	43.76	69%	45 Kg
Pheasey	Mon	1a	39.56	71%	40 Kg
Pelsall	Fri	1b	38.56	53%	52 Kg
Bloxwich West	Mon	1b	37.13	49%	54 Kg
Bloxwich East	Fri	2a	37.08	56%	47 Kg
Brownhills	Wed	1a	34.64	55%	45 Kg
Willenhall North	Mon	2a	30.92	58%	38 Kg
St Matthews	Tue	2a	30.80	43%	51 Kg
Aldridge North and Walsall Wood	Tue	1a	29.04	80%	26 Kg
Birchills Leamore	Thu	1b	28.54	48%	43 Kg
Blakenhall	Thu	1a	26.58	50%	38 Kg
Pleck	Wed	2b	24.78	49%	36 Kg
Darlaston South	Fri	2b	23.60	50%	34 Kg
Short Heath	Thu	2a	20.88	48%	31 Kg
Willenhall South	Wed	2a	20.14	34%	42 Kg
Bentley and Darlaston North	Thu	2b	19.52	47%	31 Kg
Palfrey	Mon	2b	17.41	47%	27Kg
Total			639.18	55%	

12/05/2005

Steve Chapman Policy &
Performance Manager Streetpride

Education Presentations

- There are 94 primary schools and 20 secondary schools in the Walsall borough.
- The aim is to make contact with all of the schools either by personal visit or letter offering a tailored power point presentation and then maintain ongoing contact with promotional events and reminder leaflets.
- Schools visited this year;

Date	School	Date	School
21st January 2004	Palfrey Girls School	6th and 7th July 2004	St Francis of Assisi
29th January 2004	29th January 2004	13th September 2004	Barr Beacon
11th February 2004	Willenhall	13th October 2004	Darlaston
9th March 2004	Alumwell Primary	2nd November 2004	St Giles Primary
20th April 2004	Alumwell Primary	3rd November 2004	Darlaston
24th May 2004	Darlaston	9th November 2004	Whitehall Primary
25th May 2004	Pheasey Park Farm Primary	19th November 2004	Bentley West Primary
26th May 2004	St Giles Primary	19th November 2004	Hillary Street Primary
9th June 2004	Ryders Hayes Primary	8th December 2004	Alumwell
10th June 2004	St Giles Primary		

12/05/2005

Steve Chapman Policy &
Performance Manager Streetpride

Education Presentations

Groundwork in Walsall Eco-Schools

Eco – Schools is an environmental management system for schools, the award scheme is managed by Encams. Groundwork in Walsall delivers the Eco Schools programme on behalf of Walsall MBC, Groundwork deliver educational activities that promote a responsible attitude towards litter, waste and recycling within the school, home and environment. The programme will involve 15 schools over twelve months, the schools involved are:

October – January	April – July
Bentley West Primary School Whitehall Junior Community School Hillary Primary School St Giles CE Primary School Caldmore Community Primary School	Watling Street JMI School St Bernadette's Catholic Primary School St John's CE Primary School St James' Primary School Castlefort JMI School
January – March	
St Joseph's Catholic Primary School King Charles Primary School Salisbury Primary School Rough Hay Primary School Bentley Drive JMI School	

Major Issues

- Performance Indicators and Comparisons with Neighbours
- Waste Targets
- Dry recycling progress
- Education
- Bulky Items full report next on the agenda

Waste Services

BVPI 86 & 87 Analysis when Compared to the Recycling Rates in that Year

2001/02 Out-turn Figures

	BVPI 82a	BVPI 82b	Total Recycling	Increase from 2000/01 to 2001/02		BVPI 86	BVPI 87	Total BVPI 86 & 87	Increase from 2000/01 to 2001/02	
	%	%	%	%	%	£	£	£	£	%
Wakefield MDC	4.74 %	2.68 %	7.42 %			£ 30.96	£ 29.27	£ 60.23		
Bradford MBC	5.58 %	3.96 %	9.54 %			£ 26.80	£ 32.85	£ 59.65		
Kirklees MBC	7.99 %	2.69 %	10.68 %			£ 44.08	£ 33.26	£ 77.34		
Calderdale MBC	5.73 %	4.32 %	10.05 %			£ 24.11	£ 38.06	£ 62.17		
Leeds City Council	10.30 %	1.56 %	11.86 %			£ 37.48	£ 30.14	£ 67.62		
East Riding of Yorkshire Councils	5.91 %	6.09 %	12.00 %			£ 31.19	£ 42.46	£ 73.65		
Hull City Council	5.85 %	1.18 %	7.03 %			£ 36.76	£ 39.76	£ 76.52		
Rotherham MBC	4.60 %	-	4.60 %			£ 30.06	£ 28.77	£ 58.83		
Wigan MBC	4.60 %	1.90 %	6.50 %			£ 30.50	£ 29.69	£ 60.19		
Barnsley MBC	2.27 %	0.94 %	3.21 %			£ 26.89	£ 28.28	£ 55.17		
Doncaster MBC	3.90 %	-	3.90 %			£ 24.25	£ 28.16	£ 52.41		
Sheffield City Council	4.29 %	0.65 %	4.94 %			£ 29.93	£ 42.36	£ 72.29		
Gateshead Council	3.25 %	-	3.25 %			£ 31.12	£ 33.60	£ 64.72		
Middlesbrough Council	9.70 %	-	9.70 %			£ 28.97	£ 29.52	£ 58.49		
City of Sunderland Council	1.42 %	-	1.42 %			£ 27.66	£ 24.07	£ 51.73		
Newcastle City Council	3.45 %	0.44 %	3.89 %			£ 29.24	£ 34.29	£ 63.53		
Areas Where Not all Data Supplied										
Oldham MBC	4.80 %	-	4.80 %			£ 25.44	-	£ 25.44		
Tameside MBC	7.46 %	-	7.46 %			£ 23.29	-	£ 23.29		
Bolton MBC	5.77 %	-	5.77 %			£ 22.10	-	£ 22.10		

2002/03 Out-turn Figures

	BVPI 82a	BVPI 82b	Total Recycling	Increase from 2001/02 to 2002/03		BVPI 86	BVPI 87	Total BVPI 86 & 87	Increase from 2001/02 to 2002/03	
	%	%	%	%	%	£	£	£	£	%
Wakefield MDC	7.46 %	4.99 %	12.45 %	5.03 %	67.79 %	£ 31.41	£ 29.51	£ 60.92	£ 0.69	1.15 %
Bradford MBC	6.42 %	4.35 %	10.77 %	1.23 %	12.89 %	£ 26.50	£ 33.65	£ 60.15	£ 0.50	0.84 %
Kirklees MBC	9.11 %	3.21 %	12.32 %	1.64 %	15.36 %	£ 45.88	£ 37.20	£ 83.08	£ 5.74	7.42 %
Calderdale MBC	7.57 %	4.59 %	12.16 %	2.11 %	21.00 %	£ 26.63	£ 41.39	£ 68.02	£ 5.85	9.41 %
Leeds City Council	10.30 %	2.40 %	12.70 %	0.84 %	7.08 %	£ 39.55	£ 34.47	£ 74.02	£ 6.40	9.46 %
East Riding of Yorkshire Councils	7.28 %	6.01 %	13.29 %	1.29 %	10.75 %	£ 38.26	£ 41.12	£ 79.38	£ 5.73	7.78 %
Hull City Council	8.31 %	1.24 %	9.55 %	2.52 %	35.85 %	£ 39.89	£ 37.97	£ 77.86	£ 1.34	1.75 %
Rotherham MBC	6.20 %	1.80 %	8.00 %	3.40 %	73.91 %	£ 39.99	£ 27.94	£ 67.93	£ 9.10	15.47 %
Wigan MBC	6.30 %	2.78 %	9.08 %	2.58 %	39.69 %	£ 31.23	£ 37.77	£ 69.00	£ 8.81	14.64 %
Barnsley MBC	4.35 %	1.80 %	6.15 %	2.94 %	91.59 %	£ 26.12	£ 30.35	£ 56.47	£ 1.30	2.36 %
Doncaster MBC	6.14 %	2.19 %	8.33 %	4.43 %	113.59 %	£ 23.78	£ 29.90	£ 53.68	£ 1.27	2.42 %
Sheffield City Council	4.33 %	0.78 %	5.11 %	0.17 %	3.44 %	£ 35.62	£ 41.42	£ 77.04	£ 4.75	6.57 %
Gateshead Council	4.53 %	0.22 %	4.75 %	1.50 %	46.15 %	£ 31.90	£ 32.92	£ 64.82	£ 0.10	0.15 %
Middlesbrough Council	4.30 %	-	4.30 %	(5.40) %	(55.67) %	£ 30.43	£ 30.88	£ 61.31	£ 2.82	4.82 %
City of Sunderland Council	2.36 %	0.09 %	2.45 %	1.03 %	72.54 %	£ 29.52	£ 26.34	£ 55.86	£ 4.13	7.98 %
Newcastle City Council	3.88 %	0.61 %	4.49 %	0.60 %	15.42 %	£ 22.02	£ 33.95	£ 55.97	£ (7.56)	(11.90) %
Areas Where Not all Data Supplied										
Oldham MBC	4.89 %	-	4.89 %			£ 29.78	-	£ 29.78		
Tameside MBC	7.50 %	-	7.50 %			£ 24.15	-	£ 24.15		
Bolton MBC	6.60 %	-	6.60 %			£ 22.67	-	£ 22.67		

Waste Services

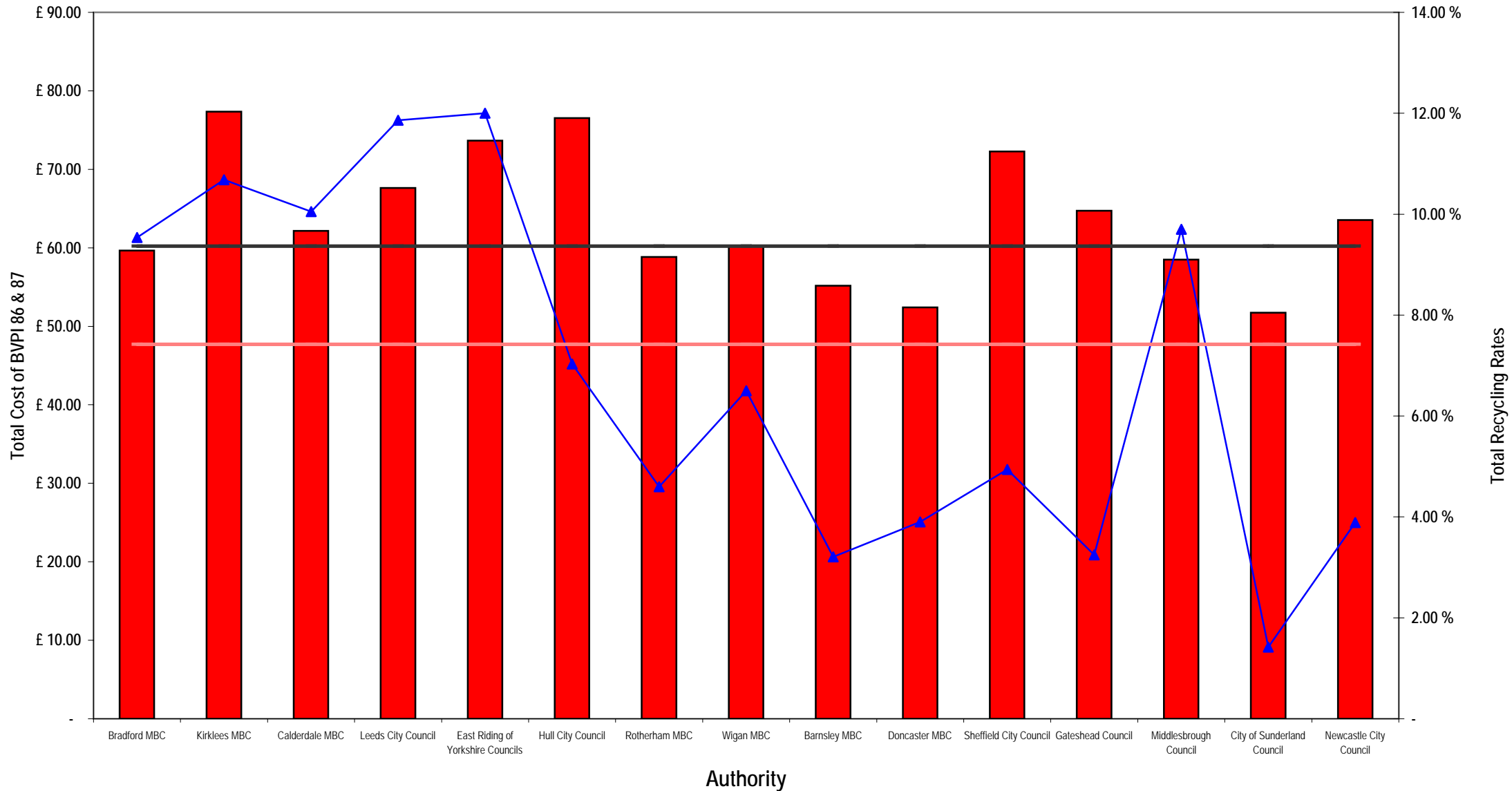
BVPI 86 & 87 Analysis when Compared to the Recycling Rates in that Year

2003/04 Out-turn Figures

	BVPI 82a	BVPI 82b	Total Recycling	Increase from 2002/03 to 2003/04		BVPI 86	BVPI 87	Total BVPI 86 & 87	Increase from 2002/03 to 2003/04	
	%	%	%	%	%	£	£	£	£	%
City of London	20.00 %	-	20.00 %			£ 149.07	£ 60.07	£ 209.14		
Greenwich	9.70 %	2.30 %	12.00 %			£ 29.67	£ 51.87	£ 81.54		
Lewisham	8.20 %	20.00 %	28.20 %			£ 43.00	£ 36.11	£ 79.11		
Southwark	6.65 %	43.00 %	49.65 %			£ 34.91	£ 31.53	£ 66.44		
Westminster	13.60 %	10.00 %	23.60 %			£ 67.62	£ 19.82	£ 87.44		
Bexley	15.60 %	4.64 %	20.24 %			£ 52.82	£ 46.42	£ 99.24		
Bromley	18.15 %	1.92 %	20.07 %			£ 35.84	£ 44.22	£ 80.06		
Croydon	11.85 %	2.20 %	14.05 %			£ 33.77	£ 68.69	£ 102.46		
Merton	13.02 %	1.79 %	14.81 %			£ 18.19	£ 52.13	£ 70.32		
Sutton	18.85 %	6.57 %	25.42 %			£ 53.52	£ 46.70	£ 100.22		
Wigan	8.80 %	3.10 %	11.90 %	2.82 %	31.06 %	£ 34.18	£ 38.59	£ 72.77	£ 3.77	5.46 %
Barnsley	9.60 %	3.40 %	13.00 %	6.85 %	111.38 %	£ 35.84	£ 32.62	£ 68.46	£ 11.99	21.23 %
Doncaster	9.21 %	4.25 %	13.46 %	5.13 %	61.58 %	£ 25.68	£ 33.15	£ 58.83	£ 5.15	9.59 %
Rotherham	10.70 %	4.20 %	14.90 %	6.90 %	86.25 %	£ 41.01	£ 29.50	£ 70.51	£ 2.58	3.80 %
Sheffield	10.83 %	1.37 %	12.20 %	7.09 %	138.75 %	£ 42.11	£ 40.09	£ 82.20	£ 5.16	6.70 %
Gateshead	9.76 %	2.49 %	12.25 %	7.50 %	157.89 %	£ 34.81	£ 37.55	£ 72.36	£ 7.54	11.63 %
North Tyneside	9.60 %	8.90 %	18.50 %			£ 21.61	£ 29.43	£ 51.04		
South Tyneside	10.56 %	3.44 %	14.00 %			£ 31.70	£ 32.30	£ 64.00		
Birmingham	10.36 %	-	10.36 %			£ 34.36	£ 51.85	£ 86.21		
Coventry	10.47 %	3.93 %	14.40 %			£ 31.16	£ 27.97	£ 59.13		
Dudley	7.77 %	6.41 %	14.18 %			£ 35.96	£ 43.91	£ 79.87		
Solihull	11.21 %	1.98 %	13.19 %			£ 25.63	£ 44.06	£ 69.69		
Walsall	5.10 %	9.60 %	14.70 %			£ 28.99	£ 28.50	£ 57.49		
Wolverhampton	4.17 %	5.08 %	9.25 %			£ 32.79	£ 42.55	£ 75.34		
Calderdale	8.58 %	5.04 %	13.62 %	1.46 %	12.01 %	£ 33.56	£ 46.88	£ 80.44	£ 12.42	18.26 %
Kirklees	10.25 %	3.95 %	14.20 %	1.88 %	15.26 %	£ 48.99	£ 37.61	£ 86.60	£ 3.52	4.24 %
Leeds	12.20 %	2.40 %	14.60 %	1.90 %	14.96 %	£ 52.50	£ 31.34	£ 83.84	£ 9.82	13.27 %
Wakefield	9.40 %	7.60 %	17.00 %	4.55 %	36.55 %	£ 36.39	£ 32.17	£ 68.56	£ 7.64	12.54 %
Areas Where Not all Data Supplied										
Newcastle upon Tyne	9.07 %	67.00 %	76.07 %			£ 35.83	-	£ 35.83		
Sandwell	6.56 %	2.67 %	9.23 %			-	-	-		

Waste Services

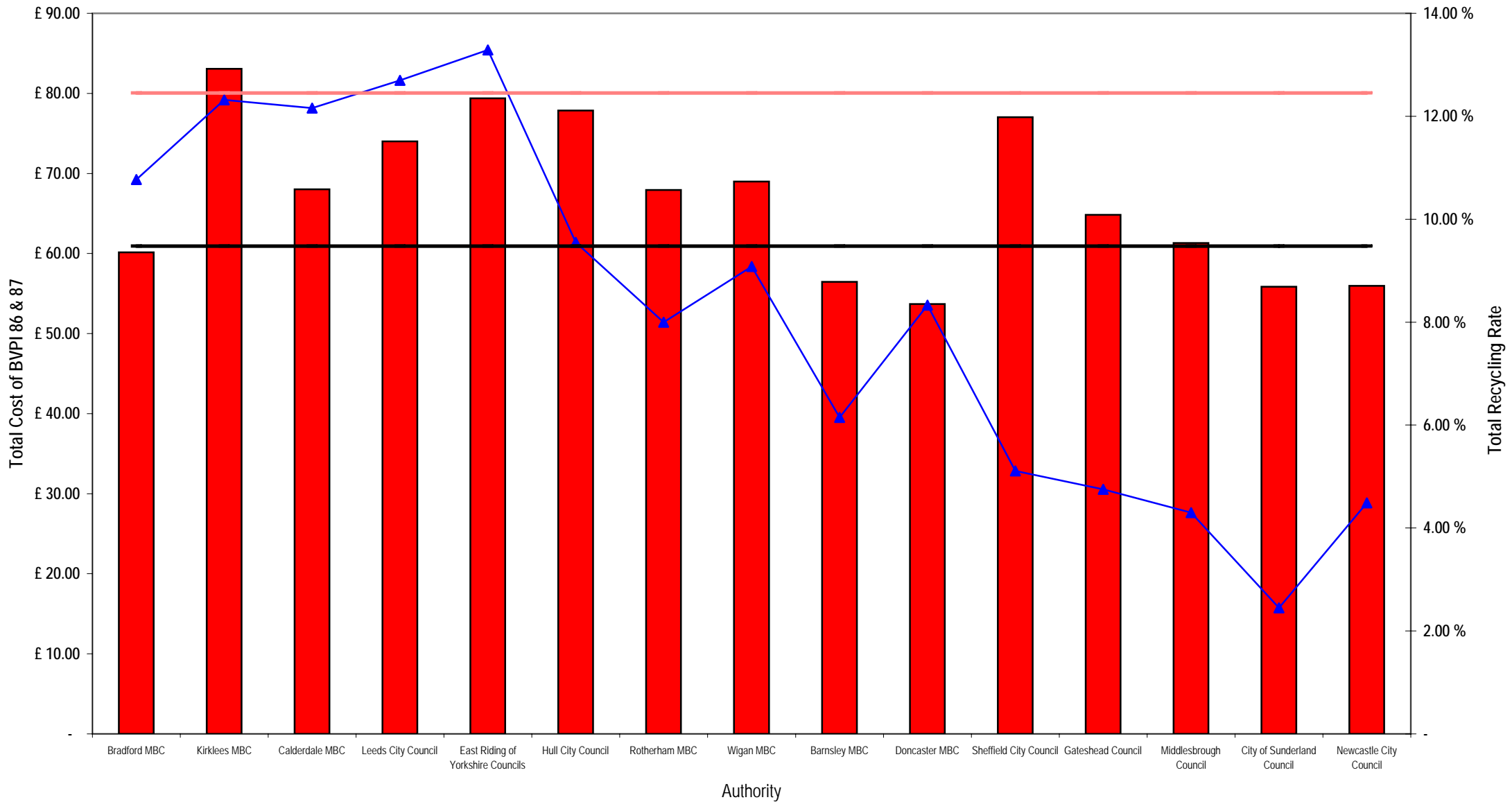
Comparison of the Net Cost of BVPI 86 & 87 When Compared to the Recycling Rates for 2001/02 Out-turn Figures



Waste Services

Comparison of the Net Cost of BVPI 86 & 87 When Compared to the Recycling Rates for 2002/03 Out-turn Figures

■ Total BVPI 86 & 87
 ▲ Total Recycling
 — Wakefield Recycling 12.45 %
 — Wakefield BVPI 86 & 87 £ 60.92



Waste Services

Comparison of the Net Cost of BVPI 86 & 87 When Compared to the Recycling Rates for 2003/04 Out-turn Figures

