



Walsall Council

WALSALL COUNCIL PUBLIC HEALTH COVID-19 SUMMARY

At present we are experiencing a global Covid-19 pandemic and a national emergency with many deaths recorded and continuing to occur. With the advent of the new variant of the COVID-19 the cases of infection in the UK are increasing at an unprecedented and alarming rate. Illegal and irresponsible actions/activities such as those encountered when, during a national emergency, King George V breached The Health Protection (Coronavirus Restrictions) (All Tiers) (England) Regulations 2020 Regulation 8 and Part 2 of Schedule 3. Paragraph 9(1) of these Regulations where on the 24th December when it opened its premises, or part of its premises, for the sale or consumption of food and drink could have caused the spread of COVID-19.

It is important to note that Walsall was moved into Tier 4 on 31st December 2020 as the number of positive cases had continued to rise. There was a 35% increase in Coronavirus cases between 21st to 27th December 2020, meaning more than 900 people tested positive for the virus and the rate per 100K of the population was 312.

Walsall's cases are increasing. From 3rd to 9th January 2021 there were 2119 cases of COVID-19.

On 11th January 2021 Walsall's rate of COVID-19 per 100k of the population per week was 826 (almost doubled from previous week).

Between Thursday 5th November 2020 and 2nd December 2020, prior to the service of the Prohibition Notice, Walsall, along with England was subject to a second lockdown. National restrictions were imposed where everyone was required to stay at home, and only for a limited set of reasons could you leave the home including:

- For education;
- For work, if you cannot work from home;

- For exercise and recreation outdoors, with your household, support bubble or on your own with one person from another household;
- For all medical reasons, appointments and to escape injury or harm;
- To shop for food and essentials;
- And to provide care for vulnerable people, or as a volunteer.

The second lockdown was introduced as there was a significant increase in the number of positive COVID cases. Although the increases were initially among younger age groups, there was increasing numbers of older people with coronavirus in almost all areas of the country, including Walsall.

The number of hospitalisations started to increase, ultimately leading to a higher mortality rate. Without the lockdown and breaking the chain of transmission between person-to-person the numbers of people dying from Coronavirus would be as high as they were at the peak of the first wave of coronavirus back in April 2020.

Walsall Council Public Health COVID-19 Summary

Transition from National restrictions to alert levels (Tiering system)

The national restrictions (Lockdown 2) ended on the 2 December and Walsall was moved into Tier 3, the highest COVID-19 category at the time. This meant that the strict restrictions would still be in place including restrictions on meeting people outside, hospitality businesses such as pubs, cafes and restaurants only being allowed to offer takeaway or click and collect service and a rule of six outdoors being imposed.

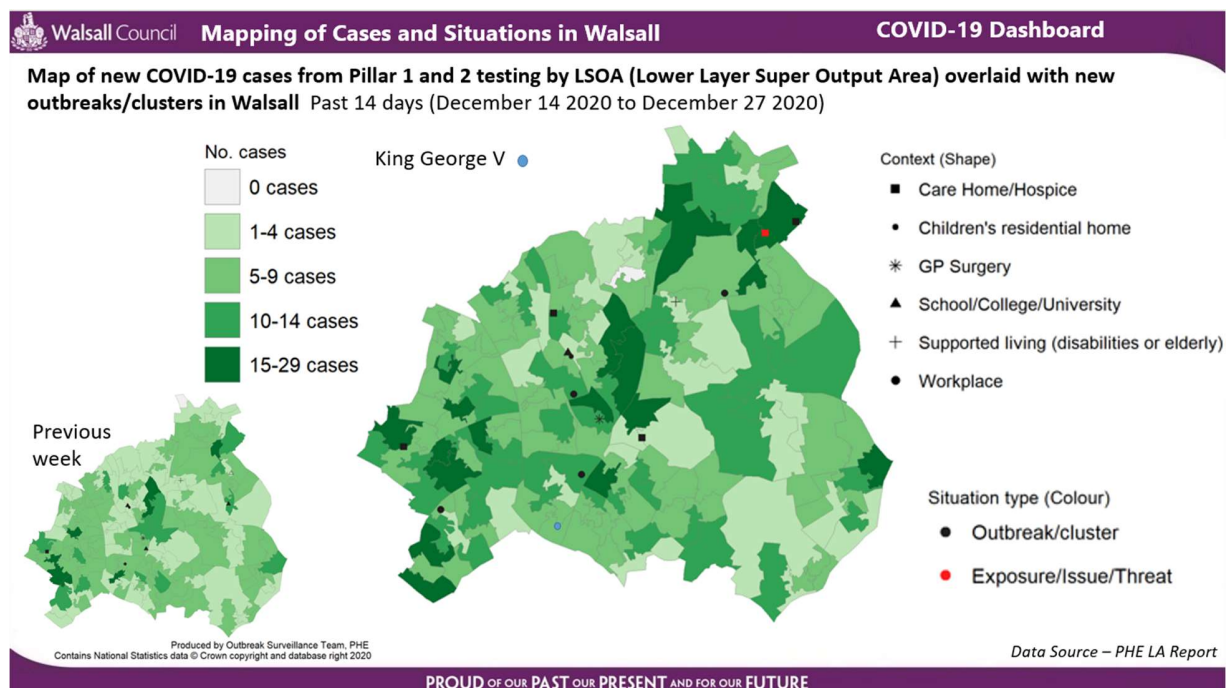
During the national restrictions there was a reduction in however the virus continued to spread in the community. The move to Tier 3 demonstrated that the rate of infection in Walsall was still too high and the restrictive measures were required locally to make sure we reduce the spread further.

Walsall was moved into Tier 4 on 31 December as the number of positive cases had continued to rise. There was a 35% increase in coronavirus cases between 21 to 27 December, meaning more than 900 people tested positive for the virus and the rate per 100K of the population was 312.

[Read the statement from the Director of public health on the Transition from national restrictions to Local COVID Alert Level Very High \(Tier 3\)](#)

COVID-19 Data

- The rate per 100K was 308, significantly higher than the national and also regional average during this period
- In total 831 people tested positive for COVID-19 (20th to 26th December) a 25% increase compared to the previous week.
- At the time, positive case rates were on the increase as was positivity, with testing levels below the national and WM region.
- Those aged 30 to 44 years were the most prominent age groups testing positive at 29%
- The mortality rate in Walsall and the Black Country continued to increase
- The NHS was under significant pressure and Walsall Manor hospital remained extremely busy with pressure on ICU.
- The main transmission route in Walsall was household to household meaning people spending time indoors with people outside of their household or recognised support bubble. This was against Tier 3 restrictions
- The rate for Pleck ward was 308 per 100K of the population – ranked 10th highest ward for that week.



It is important to note that Walsall was moved into Tier 4 on 31 December as the number of positive cases had continued to rise. There was a 35% increase in coronavirus cases between 21 to 27 December, meaning more than 900 people tested positive for the virus and the rate per 100K of the population was 312.

