

**10 October 2013**

**Petition regarding the provision of a new car park at the Lucknow Road shops submitted to Council 8 July 2013**

**Ward(s)**      Short Heath

**Portfolios:**   Cllr A Andrew – Regeneration and Transport

**Executive Summary:**

A petition containing approximately 1200 signatures was submitted to Council 8 July 2013. The petition requested the Council to provide a car park in front of the Lucknow Road shops in Willenhall. This report details the response of the Executive Director for Neighbourhood Services to this petition.

**Reason for scrutiny:**

The Council's petitions scheme requires that where a petition containing at least 500 signatures is received by the Council, the relevant senior officer will give evidence at a public meeting of one of the Council's scrutiny and performance panels. The authority has determined that the response to such petitions must be given by either, the Chief Executive, Executive Directors, Assistant Directors or Heads of Service.

**Recommendations:**

**That:**

1. The Panel note the contents of this report.
2. The Panel consider the merits of submitting a funding bid for the delivery of this scheme in 2014/15.

**Background papers:**

None

**Resource and legal considerations:**

The provision of a new car park would require planning approval for the required change of use from an existing grassed area.

**Citizen impact:**

The provision of a new car park would address the local demand for improved parking facilities to facilitate access to local shops at Lucknow Road.

**Environmental impact:**

The provision of a new car park would require the relocation of an existing bus stop, and loss of green space fronting the shops. However, the improvement in parking capacity would have a positive benefit by reducing the amount of ad hoc parking that currently takes place near to the junction of Lucknow Road and Pool Hayes Lane.

**Performance management:**

No impact

**Equality Implications:**


Disabled bays will be included as part of the design and an Equality Impact Assessment will be carried out as part of the project.

**Consultation:**

Consultation with the Council's Traffic Management and Road Safety teams has been undertaken in the preparation of this report.

**Contact Officer:**

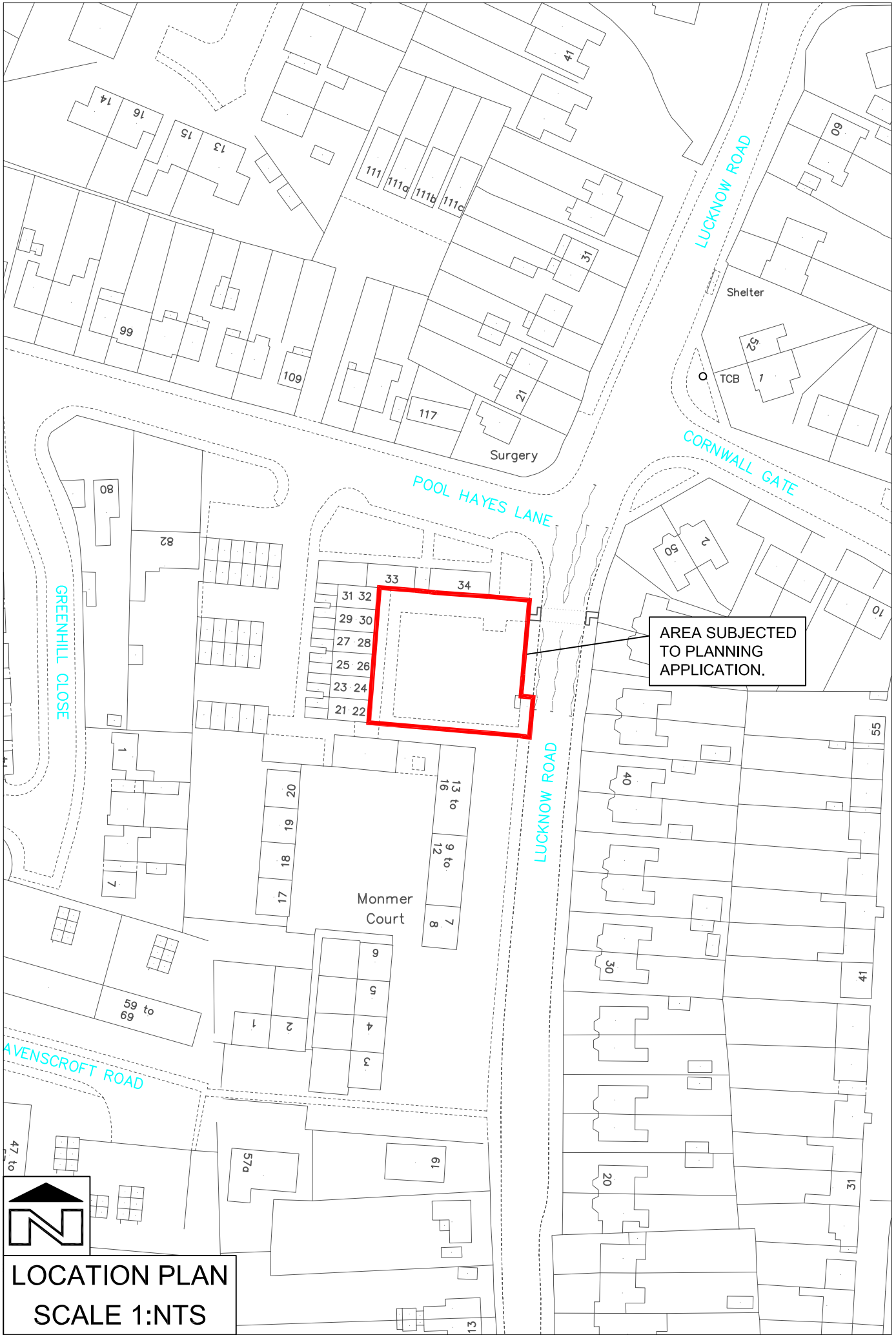
Steve Pretty - Head of Service


 . 01922 654696

[prettys@walsall.gov.uk](mailto:prettys@walsall.gov.uk)

## Report

1. Following receipt of the petition, an initial assessment of the feasibility of a car park scheme at this location was undertaken by officers from Engineering and Transportation. A preliminary design has been produced that demonstrates a car park providing 18 spaces could be constructed and safely operated from this location. The location of this proposal is shown on the attached plan.
2. To provide a safe entry / exit point to and from the car park would require the relocation of an existing bus stop shelter. The bus stop shelter would have to be relocated approximately 60m south of its current location on Lucknow Road. It is not envisaged that this relocation would have any material impact on the operation of the bus service or its passengers.
3. Existing parking provision to serve the shops is limited to a small parking bay of 4 spaces located on Pool Hayes Lane and nearby sections of Lucknow Road where the carriageway is unrestricted. Parking on Lucknow Road is not specifically intended to serve the shops and is frequently used for residential parking purposes.
4. The provision of a new dedicated car park would have a positive impact for the local businesses trading from the shopping centre as their customers would have improved parking facilities available for their use. However, the provision of a formal car park could encourage the congregation of motor vehicles during the hours when the shops are not trading and this could lead to increased instances of antisocial behaviour taking place in close proximity to residential premises.
5. The budget estimate for this scheme is a one off capital investment of £168k and an ongoing revenue requirement of £7k to cover general car park rates and maintenance. For this scheme to be delivered an investment bid would need to be approved as part of the Council's budget setting process.



  
**LOCATION PLAN**  
**SCALE 1:NTS**