

Cabinet

Wednesday 17 December 2014 at 6.00 p.m.

in Conference Room 2 at the Council House, Walsall

Portfolios

Councillor S. Coughlan,
Leader of the Council



Councillor Jeavons
Portfolio: Environment
and transport



Councillor Nazir
Deputy Leader and
Regeneration



Councillor Robertson
Portfolio: Health



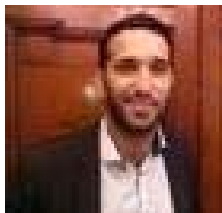
Councillor Cassidy
Portfolio: Children's
services and education



Councillor Chambers
Portfolio: Personnel and
business support



Councillor Hussain
Portfolio: Community,
leisure and culture



Councillor D. Coughlan
Portfolio: Social care



Democratic Services, The Council House, Walsall, WS1 1TW
Contact name: **Helen Owen** ☎ (01922) 654522 ✉ owenh@walsall.gov.uk
www.walsall.gov.uk

**If you are disabled and require help to and from the meeting room,
please contact the person above**

Agenda

Page

Part I – Public session

1. Apologies
2. Minutes – 29 October and 2 December 2014 6 - 20
3. Declarations of interest
4. **Local Government (Access to Information) Act, 1985 (as amended):**
To agree that the public be excluded from the private session during consideration of the agenda items indicated for the reasons shown on the agenda.
5. Petitions
6. Questions:
(Note: 30 minutes will be allowed for pre-submitted questions from non-executive members and the public. All questions will have been submitted at least 7 clear days before the meeting.

Answers will be provided at the meeting - no supplementary questions will be allowed.)
7. Forward plan of key decisions 21 - 25
(Note: The Council's Constitution states:
 - (1) In these regulations a “key decision” means an executive decision, which is likely:
 - (a) to result in the relevant local authority incurring expenditure which is, or the making of savings which are, significant having regard to the local authority's budget for the service or function to which the decision relates; or
 - (b) to be significant in terms of its effects on communities living or working in an area comprising two or more wards or electoral divisions in the area of the relevant local authority.
 - (2) In determining the meaning of “significant” for the purpose of paragraph (1) this will be if it results in incurring expenditure which either exceeds that included in any approved revenue or capital budget, or results in the Council incurring expenditure, or the making of savings which are equivalent to or more than 5% of any approved revenue budget or 10% of a capital budget, subject to a de minimus level of £100,000.)

Leader of the Council: Councillor S. Coughlan

Non key decisions

- | | | |
|-----|--|----------|
| 8. | Emerging Corporate Plan 2015-19 “Shaping a fairer future” | 26 - 47 |
| 9. | Council tax reduction scheme | 48 - 98 |
| 10. | Financial Plan 2015/16 to 2018/19: Update on Draft revenue budget and capital programme - Consultation | 99 – 118 |

Deputy Leader and Regeneration: Councillor Nazir

Key decisions

- | | | |
|-----|----------------------------|-----------|
| 11. | Economic Growth Programme | 119 - 135 |
| 12. | Former Broadway North Home | To follow |

Children’s services and education: Councillor Cassidy

Non key decisions

- | | | |
|-----|---|-----------|
| 13. | Statement of purpose – Children’s homes | 136 - 141 |
|-----|---|-----------|

Community, leisure and culture: Councillor Hussain

Key decisions

- | | | |
|-----|---|-----------|
| 14. | Delivering differently – Walsall Adult and Community College– | 142 - 157 |
|-----|---|-----------|

Environment and transport: Councillor Jeavons

Key decisions

- | | | |
|-----|--|-----------|
| 15. | Compliance with Waste Framework Directive and Waste Regulations 2011 | 158 - 170 |
|-----|--|-----------|

Non key decisions

- | | | |
|-----|---------------------------------------|-----------|
| 16. | Waste disposal and recycling contract | 171 - 175 |
|-----|---------------------------------------|-----------|

Social care: Councillor D. Coughlan

Non key decisions

- | | | |
|-----|-------------------------------|-----------|
| 17. | Future of Fallings Heath Home | 176 - 202 |
|-----|-------------------------------|-----------|

Scrutiny and Performance Panel reports and responses

- | | | |
|-----|---|-----------|
| 18. | Care leaver working group – Report of Children’s Services Scrutiny and Performance Panel | 203 - 234 |
| 19. | Ravenscourt Shopping Centre – Report of Business, Employment Local Economy Scrutiny and Performance Panel | 235 - 242 |

Part II – Private session

Deputy Leader and Regeneration: Councillor Nazir

Key decisions

20. Former Broadway North Home To follow

[Exempt information under paragraph 3 of Part I of Schedule 12A of the Local Government Act, 1972 (as amended)]

Community, leisure and culture: Councillor Hussain

Key decisions

21. Delivering differently – Walsall Adult and Community College 243 - 355

[Exempt information under paragraph 3 of Part I of Schedule 12A of the Local Government Act, 1972 (as amended)]

- o o o -