

The Next Steps

Foundation Trust Consultation Document
In Brief



Walsall Healthcare
For One & All

Foundation Trust Status for Walsall

The Next Steps

Ben Reid OBE, Chair

Welcome to Walsall Healthcare NHS Trust's consultation document for Foundation Trust status.

Our Trust is firmly founded in the communities we serve and we can only improve with the help and involvement of the people who make us what we are.

That's why we are asking for your thoughts on these proposals, and we hope many of you will get further involved by becoming members and Governors.

Together we can take the next steps to becoming
Walsall Healthcare NHS Foundation Trust.



Help us to help you

Richard Kirby, Chief Executive

Thanks for taking the time to find out more about Walsall Healthcare NHS Trust's plans to become a Foundation Trust. We've seen so many changes in recent years and this is the next, important step of our journey.

Our vision for the Trust is to **provide first class, integrated healthcare for the people we serve, in the right place, at the right time.**

Becoming a Foundation Trust will help us to achieve our vision for the future. We believe the move will make us a more integrated, flexible

organisation able to tailor our services to the needs of local people.

We already know we can learn much from our patients and staff. By working together with our members and Governors we will have a dialogue with the people who know us best.

We also propose to have closer links to our partner organisations so they can better help us deliver seamless, integrated care across the area we serve. Our plans are here in this booklet; please help us by filling out the enclosed questionnaire. If you would like to read the full version of this document, please go to our website www.walsallhealthcare.nhs.uk

Together we can shape the future of healthcare in Walsall, for one and all.

What is a Foundation Trust?

- **Independent;**
- **Accountable to local people, patients, service users and staff;**
- **Free to develop services;**
- **Still part of the NHS Family;**
- **Subject to strict NHS standards.**

Our vision

We've set out our vision for the future of the Trust, it is a statement that shows all our staff, partners and patients where we want to be as an organisation.

Our vision
To provide first class, integrated health services for the people we serve in the right place at the right time.

Our promises

To achieve our vision we must ensure that we have the right guiding principles. We firmly believe that each and every member of staff should deliver this set of promises – many, of course, already do – and then we'll be well on our way to being the organisation we want to be.

At Walsall Healthcare we promise to do our best to ensure you feel...

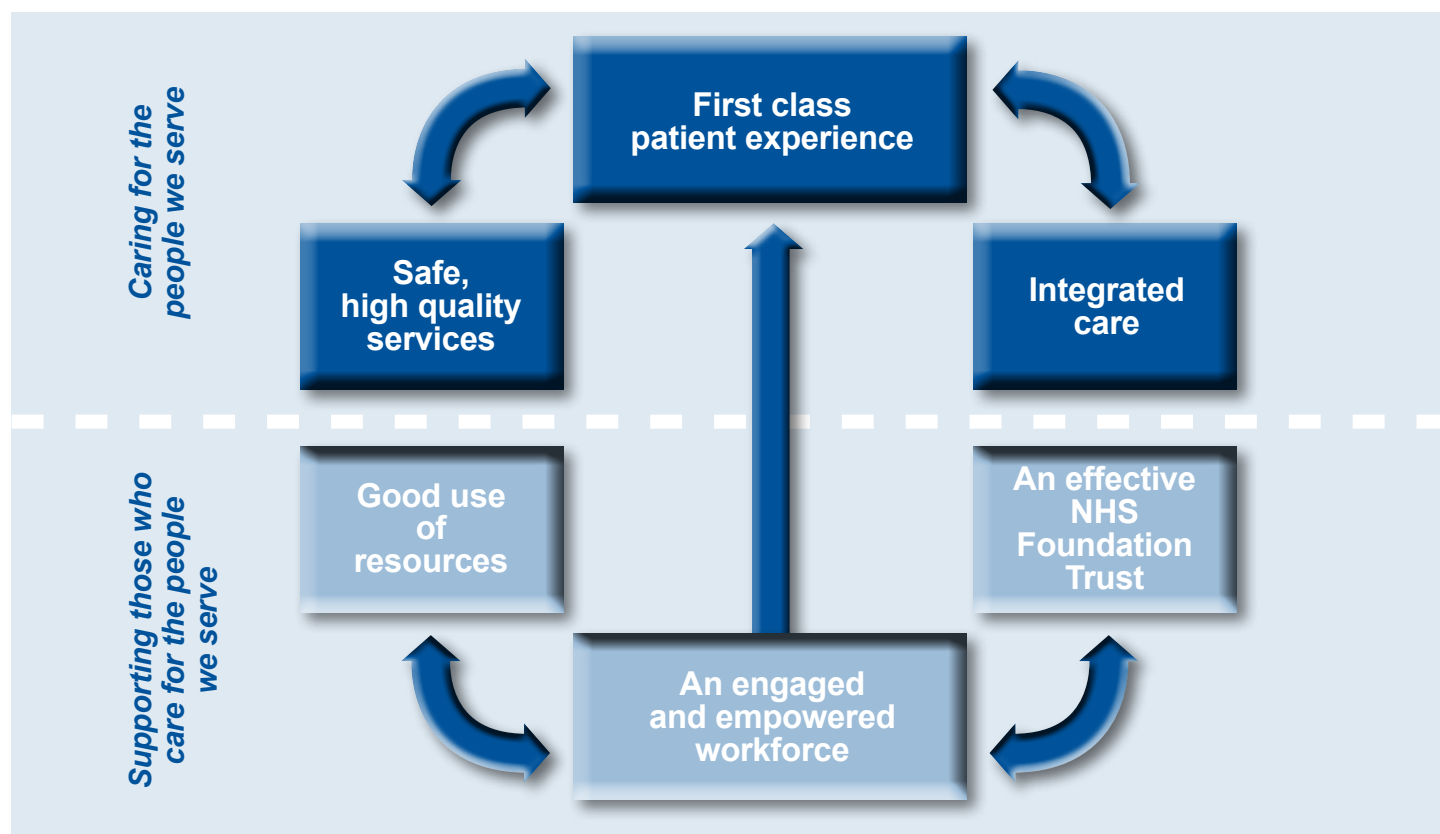


At Walsall Healthcare we promise to do our best to ensure the people we work with feel...



Our priorities

We have our vision, we know the promises we need to deliver to get there, and here are the areas we must focus on to achieve our goals. We believe that becoming a Foundation Trust will give us new, flexible ways of working that will help us achieve that.



Playing your part – members and Governors

When we become a Foundation Trust our members and Governors will play a pivotal role in our organisation. By joining us as a member, you can have your say on the future of Walsall Healthcare NHS Trust. A strong membership means that the people who care the most about what we do, will have a say in what we do. Each of our members will have the opportunity to stand for election to represent their communities on the Council of Governors. Elections will be organised by an independent body and only members will be able to vote. The Council of Governors will work with our Board of Directors – who are responsible for the day-to-day running of the Trust – to make sure we deliver high quality and consistent care in line with NHS standards.

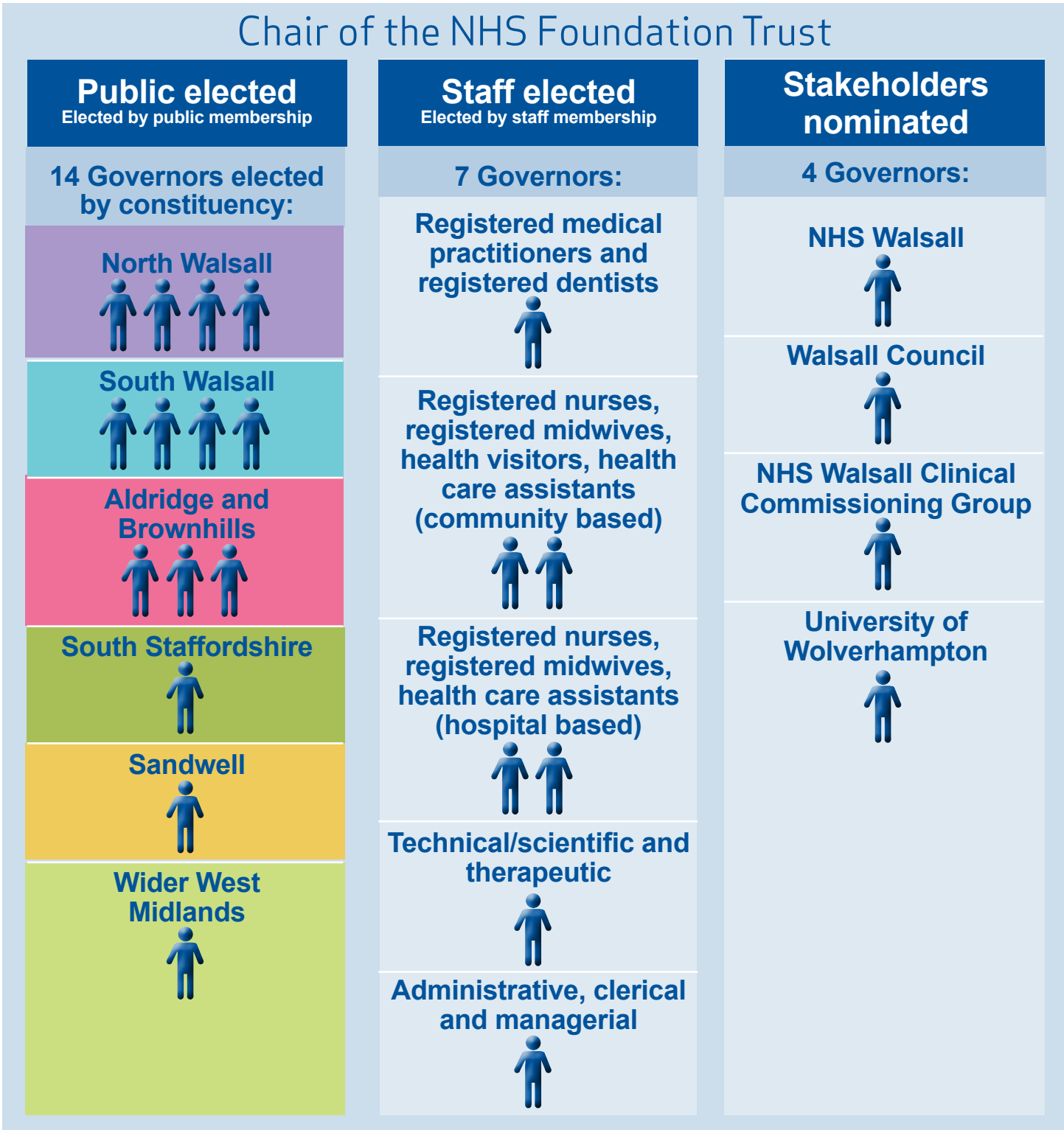
Members will:

- Shape the future of the Trust;
- Be invited to take part in focus, discussion, advisory or user groups;
- Be invited to open days, the AGM and other events;
- Will receive the Trust's twice-yearly membership newsletter;
- Be able to stand for election as a Governor or vote for another member as a Governor of their constituency;
- Be eligible to apply to be a Non-Executive Director on the Board of Directors;
- Be over 16 years of age;
- Come from any of our constituencies;
- Membership is free and does not give preferential access to our services. Foundation Trusts remain part of the NHS family providing free care, based on need;
- Our staff will automatically become members but any one who doesn't wish to do so can easily opt out.

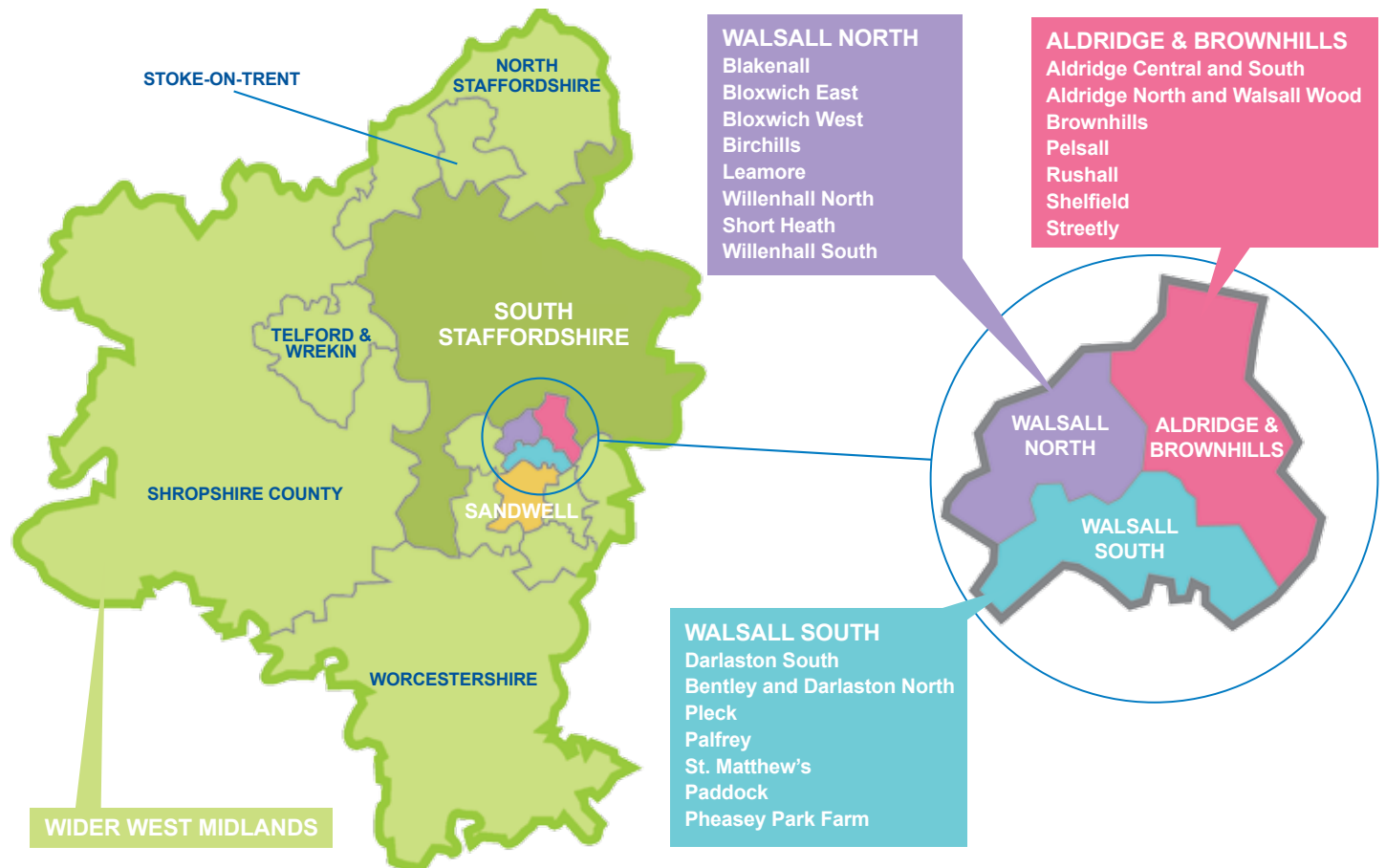
Governors will be able to:

- Represent the views of, and provide a link to public, staff and partner organisations;
- Appoint (or if appropriate remove) the Chairman and the other Non-Executive Directors;
- Approve the appointment of the Chief Executive Officer;
- Decide the remuneration and allowances, and the other terms and conditions of office, of the Non-Executive Directors;
- Appoint (or, if appropriate remove) the Trust's external auditor;
- Be presented with the annual accounts, any report of the auditor on them and the annual report;
- Provide their views to the Board of Directors when it is preparing the Foundation Trust's forward planning publications;
- Further develop and approve the Membership Development Strategy;
- Hold quarterly public meetings where they consider the quality, performance and financial status of the organisation as well as the strategic direction of the Trust;
- Contribute to Governor working groups such as Patient & Public Involvement, Membership Engagement and Communications, Annual Plan development and Quality Accounts;
- Ensure that the Trust operates in accordance with its license as an NHS Foundation Trust.

We propose the Council of Governors will look like this:



The Public Governors will come from these areas



The Board of Directors

The role of the Trust's Board of Directors is to take responsibility for setting and delivery of the strategy of the Trust. We propose that the Board will look like this:



Chair of the NHS Foundation Trust



Our consultation period will run for three months, until May 14th 2012 and during this time we'll be asking the public, our staff and partners for their views on our proposals.

You can make your views heard by attending a public meeting, completing a questionnaire or contacting us

direct, all the details can be found on pages 7 and 8. Following this consultation process our bid, complete with your feedback, will be fully and stringently assessed by Monitor, the independent regulator of NHS Foundation Trusts. We expect to hear if we have been successful in becoming a Foundation Trust in mid 2013.

What do you think? Answer yes or no to the following by ticking the box.
If you answer no please explain your reasons in the box below each question.

Do you agree with our vision, promises and priorities as a Foundation Trust? YES ☐ NO ☐

Do you agree with our approach to membership? YES ☐ NO ☐

Do you agree with the make-up of the Council of Governors? YES ☐ NO ☐

Do you agree with our constituency boundaries for Public Elected Governors? YES ☐ NO ☐

Do you agree with the different staffing groups for the Staff Elected Governors? YES ☐ NO ☐

Do you agree with our proposal for the partner organisations that will be represented on the Council of Governors? YES ☐ NO ☐

Do you agree with the proposed composition of our Board of Directors? YES ☐ NO ☐

When we are granted Foundation Trust status we propose that Walsall Healthcare NHS Trust would become Walsall Healthcare NHS Foundation Trust. Do you agree with our choice of name when we become an NHS Foundation Trust? YES ☐ NO ☐

If you wish to be kept informed of our progress in bidding for Foundation Trust status, let us have your email address. (Your contact details will not be used for any other purpose or passed on to a third party).

Please return the questionnaire to the Freepost address provided by Monday May 14th 2012

Want to find out more?

Full details are available on our website www.walsallhealthcare.nhs.uk
or call the FT communications team on 01922 656 513 (9am-5pm weekdays)
or send an email to foundation.trust@walsallhealthcare.nhs.uk

FOLD HERE



Freepost RSUH-UJZA-TLGR
Membership Office
Route 109 Trust HQ
Walsall Healthcare NHS Trust
Manor Hospital
Moat Road
WALSALL
WS2 9PS



Walsall Healthcare NHS Trust

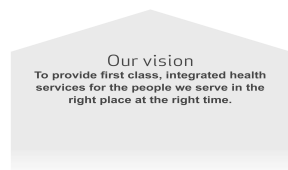
Foundation Trust Status The Next Steps

Welcome

Dawn Cliff
Director of Corporate
Affairs and Trust
Secretary

Who we are

- c.3,500 colleagues
- Serving 260,000 people in Walsall, South Staffs & the Black Country
- Operating from the Manor Hospital and 60 other sites
- Annual income of c.£200m
- Aiming to be a Foundation Trust during 2013



Our promises to patients

Our promises to our patients

Because we know that delivering a good patient experience is an essential part of providing first class, integrated health services.

At Walsall Healthcare we promise to do our best to ensure you feel...

Welcomed
by a friendly, helpful and professional team who value your view

Cared for
by kind and considerate people who involve you and your family in your care

In safe hands
with highly professional, well-trained staff, ensuring you are safe and secure

Our promises to our colleagues

Our promises to our colleagues

Because we know that valued, involved and supported colleagues are essential to delivering good patient experience and first class, integrated health services.

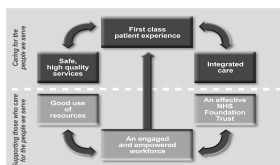
At Walsall Healthcare we promise to do our best to ensure the people we work with feel...

Part of one team
As colleagues who share a common purpose and vision, working together to deliver the best patient experience and first class, integrated health services

Appreciated
As individuals who bring their own skills, experience and knowledge to the team, and whose contributions are valued and supported

Helped to meet our high standards
As individuals who are encouraged to develop their skills and knowledge, and who are supported to achieve the highest standards of care

Our priorities



What is a Foundation Trust?

- ? Independent
- ? Accountable
- ? Part of the NHS Family
- ? Free to develop services
- ? Subject to strict standards

We need your help

Foundation Trust Consultation Period

Wednesday February 15 2012 –
Monday May 14 2012

When we become a Foundation Trust we propose we will become known as :

Walsall Healthcare **NHS**
NHS Foundation Trust

Playing your part

Members and Governors will play a pivotal role.

A strong membership means that the people who care the most about what we do will have a say in what we do.

Members

Members will:

- Shape the future of the Trust;
- Be invited to take part in focus, discussion, advisory or user groups;
- Be invited to open days, the AGM and other events
- Receive the Trust's quarterly membership newsletter.
- Be able to stand for election as a Governor or vote for another member as a Governor of their constituency;
- Be eligible to apply to be a Non-Executive Director on the Board of Directors;
- Be over 16 years of age;
- Come from any of our constituencies.

Members continued...

- Membership is free and does not give preferential access to our services. Foundation Trusts remain part of the NHS family providing free care, based on need;
- Our staff will automatically become members but anyone who doesn't wish to do so can easily opt out.

Governors

Governors will be able to:

- Represent the views of, and provide a link to public, staff and partner organisations;
- Appoint (or if appropriate remove) the Chair and the other Non-Executive Directors;
- Approve the appointment of the Chief Executive Officer;
- Decide the remuneration and allowances, and the other terms and conditions of office, of the Non-Executive Directors;

Governors continued ...

- Appoint (or, if appropriate remove) the Trust's external auditor;
- Be presented with the annual accounts, any report of the auditor on them and the annual report;
- Provide their views to the Board of Directors when it is preparing the Foundation Trust's forward planning publications;
- Further develop and approve the Membership Development Strategy;
- Hold quarterly public meetings where they consider the quality, performance and financial status of the organisation as well as the strategic direction of the Trust;

Governors continued ...

- Contribute to Governor working groups such as Patient & Public Involvement, Membership Engagement and Communications, Annual Plan development and Quality Accounts;
- Hold their position on the council for up to three years, and can be elected for a maximum of three terms or nine years in total;
- Ensure that the Trust operates in accordance with its license as an NHS Foundation Trust.

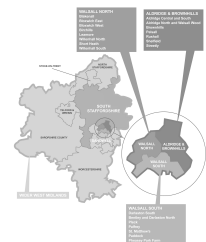
Governors continued ...

• Stakeholders nominated Governors (x4):

- NHS Walsall
- Walsall Council
- NHS Walsall Clinical Commissioning Group
- University of Wolverhampton

Public Constituencies

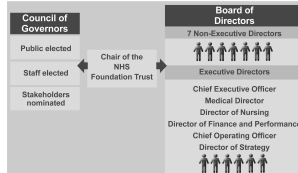
Walsall North (4)
Walsall South (4)
Aldridge and Brownhills (3)
Sandwell (1)
South Staffordshire (1)
Wider West Midlands (1)



Staff Constituencies

- Registered medical practitioners and dentists (1)
- Registered nurses, registered midwives, health visitors, health care assistants (2 hospital based, 2 community based)
- Technical/scientific/therapeutic (1)
- Admin, clerical and managerial. (1)

The Relationship between the Council of Governors and the Board of Directors



What happens next?

Gather feedback
↓
Formally apply to Sec of State for Health
↓
Assessed by Monitor
↓
Decision expected during 2013

Help us to help you

Pick up a questionnaire
or
complete one online at
www.walsallhealthcare.nhs.uk

Email:
foundation.trust@walsallhealthcare.nhs.uk
Or call:
01922 656513 (9am-5pm week days)

Thank you for listening, any
questions?